



Lat40°, Inc. 1635 Foxtrail Drive, Suite 325 Loveland, CO 970-776-3321

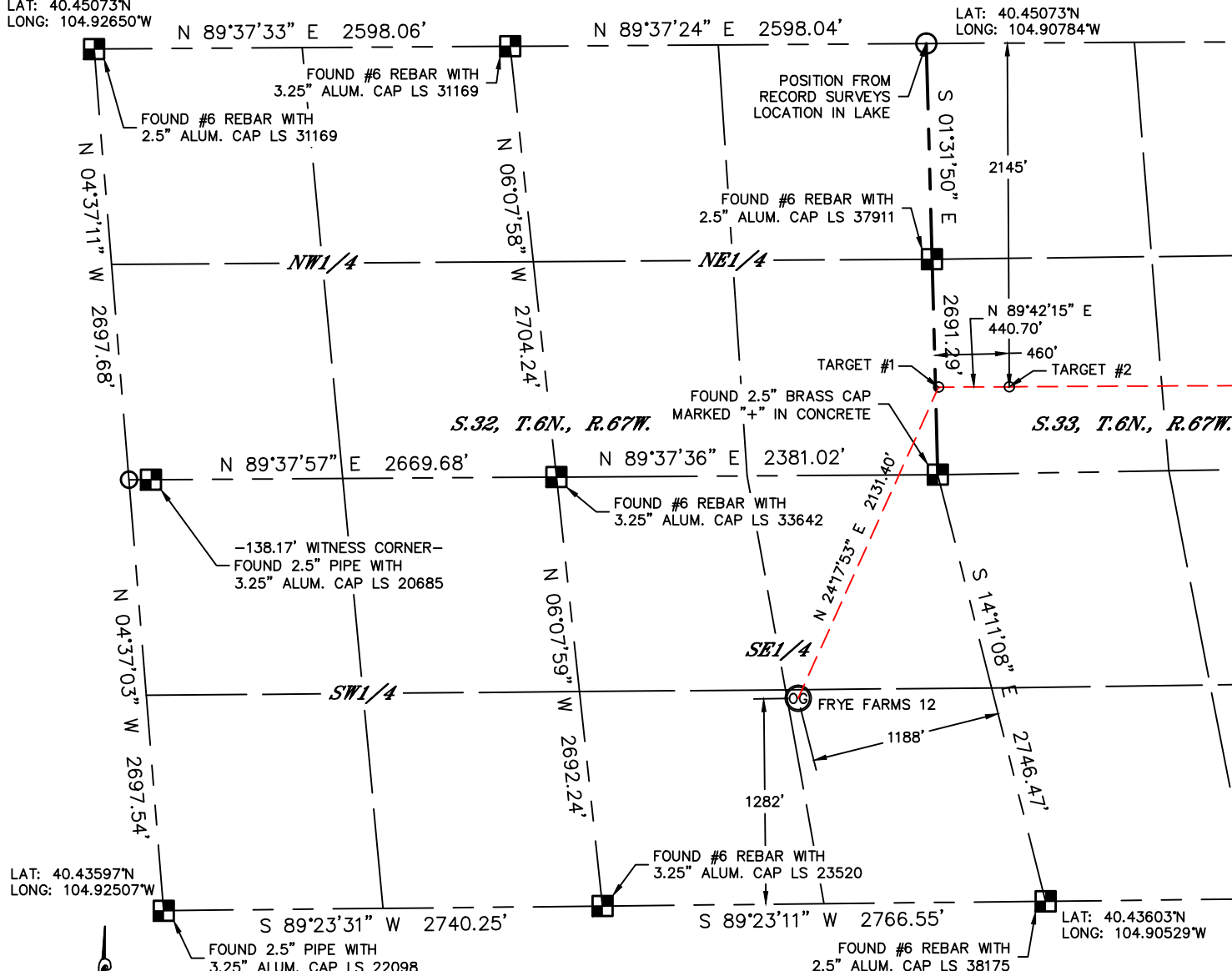
WELL LOCATION CERTIFICATE

SECTION: 32
TOWNSHIP: 6N
RANGE: 67W

THIS MAP DOES NOT REPRESENT A BOUNDARY SURVEY

LAT: 40.45073°N
LONG: 104.92650°W

LAT: 40.45073°N
LONG: 104.90784°W



In accordance with a request from Michael Cuba with Tekton Energy, LLC, Lat40°, Inc. has determined the surface location of the FRYE FARMS 12 #1-3-33-090-4-NH to be 1282' from the SOUTH line and 1188' from the EAST line as measured at right angles from the section lines of Section 32, Township 6 North, Range 67 West and the bottom hole to be 2145' from the NORTH line and 460' from the EAST line as measured at right angles from the section lines of Section 33, Township 6 North, Range 67 West of the Sixth Principal Meridian, County of Weld, State of Colorado.

I hereby state that this Well Location Certificate was prepared by me, or under my direct supervision, that the fieldwork was completed on 11/14/2012, for and on behalf of Tekton Energy, LLC. That this is not a Land Survey Plat or an Improvement Survey Plat, and that it is not to be relied upon for establishment of fence, building, or other future improvement lines.

NOTE:

- 1) Bearings shown are Grid Bearings of the Colorado State Plane Coordinate System, North Zone, North American Datum 1983/2007. The lineal dimensions as contained herein are based upon the "U.S. Survey Foot."
- 2) Ground elevations are based on an observed GPS elevation (NAVD 1988 DATUM).
- 3) IMPROVEMENTS: See LOCATION DRAWING for all visible improvements within 400' of disturbed area.
- 4) SURFACE USE: EX. WELL PAD / CROPLAND
- 5) INSTRUMENT OPERATOR: BRIAN ROTTINGHAUS

SURFACE LOCATION

LAT: 40.43953°N
LONG: 104.91081°W
PDOP: 1.8
ELEV: 4880'
1/4, 1/4: SE1/4SE1/4
NEAREST PROPERTY LINE: 282' N

BOTTOM HOLE

LAT: 40.44482°N
LONG: 104.89084°W

TARGET #1

LAT: 40.44484°N
LONG: 104.90761°W

TARGET #2

LAT: 40.44484°N
LONG: 104.90603°W

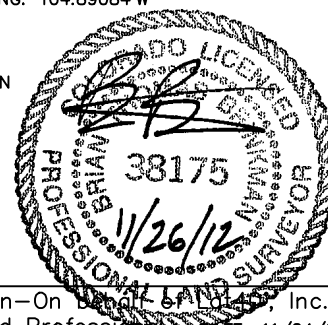
NOTE

According to Colorado law, you must commence any legal action based upon any defect in this W.L.C. within three years after you discover such defect. In no event, may any action based upon any defect in this survey be commenced more than ten years after the date of the certificate shown hereon. (13-80-105 C.R.S.)

LEGEND

- = ALIQUOT MONUMENT AS DESCRIBED
- = CALCULATED POSITION

Brian T. Brinkman—On behalf of Lat40°, Inc.
Colorado Licensed Professional Land Surveyor No. 38175
DATE: 11/24/2012
PROJECT#: 2011316



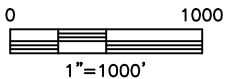
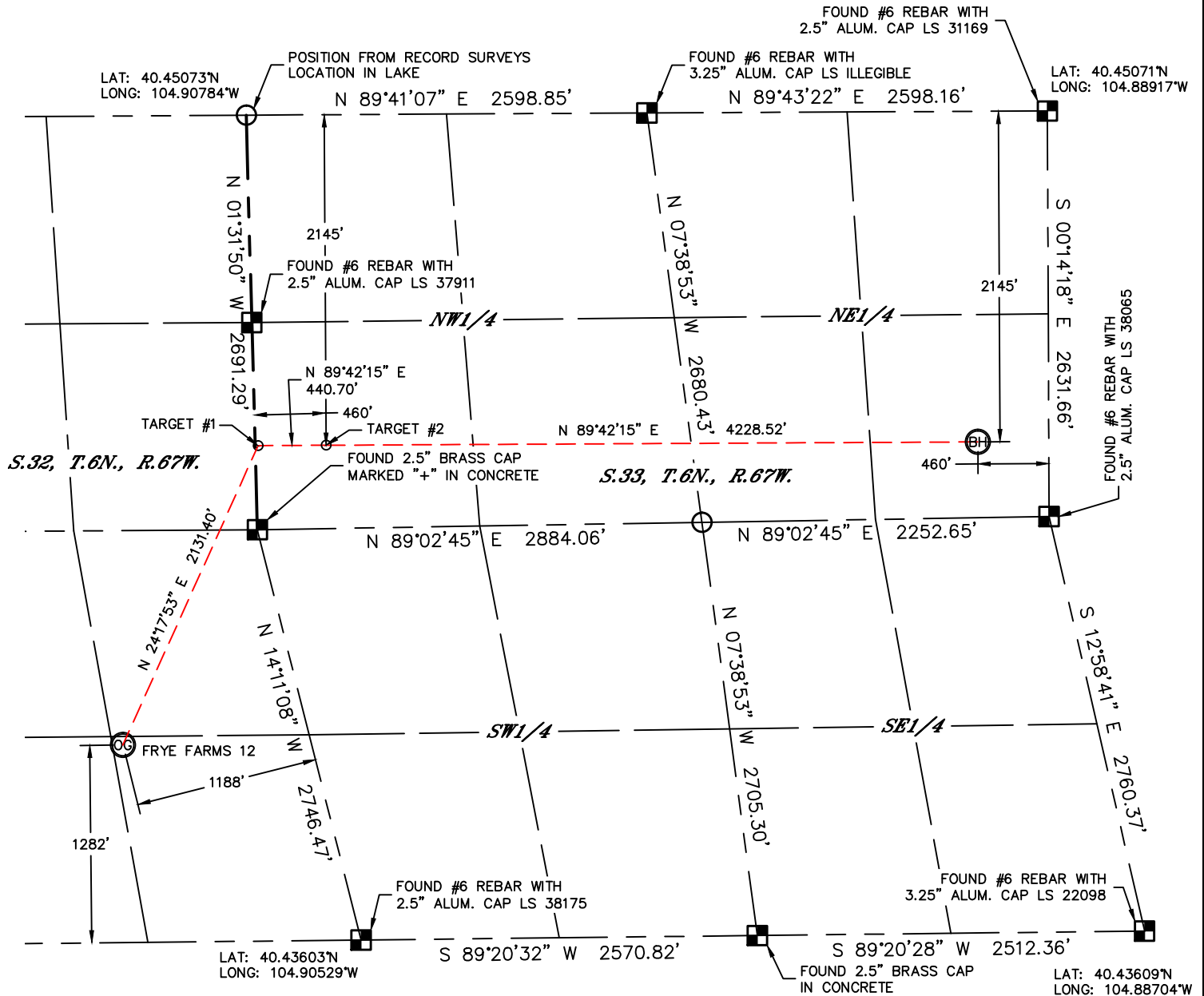


Lat40°, Inc. 1635 Foxtrail Drive, Suite 325 Loveland, CO 970-776-3321

WELL LOCATION CERTIFICATE

THIS MAP DOES NOT REPRESENT A BOUNDARY SURVEY

SECTION: 32
TOWNSHIP: 6N
RANGE: 67W



NOTE

According to Colorado law, you must commence any legal action based upon any defect in this W.L.C. within three years after you discover such defect. In no event, may any action based upon any defect in this survey be commenced more than ten years after the date of the certificate shown hereon. (13-80-105 C.R.S.)

LEGEND

- = ALIQUOT MONUMENT AS DESCRIBED
- = CALCULATED POSITION

SHEET 2 OF 2

Brian T. Brinkman—On behalf of Lat40°, Inc.
Colorado Licensed Professional Land Surveyor No. 38175
DATE: 11/24/2012
PROJECT#: 2011316

