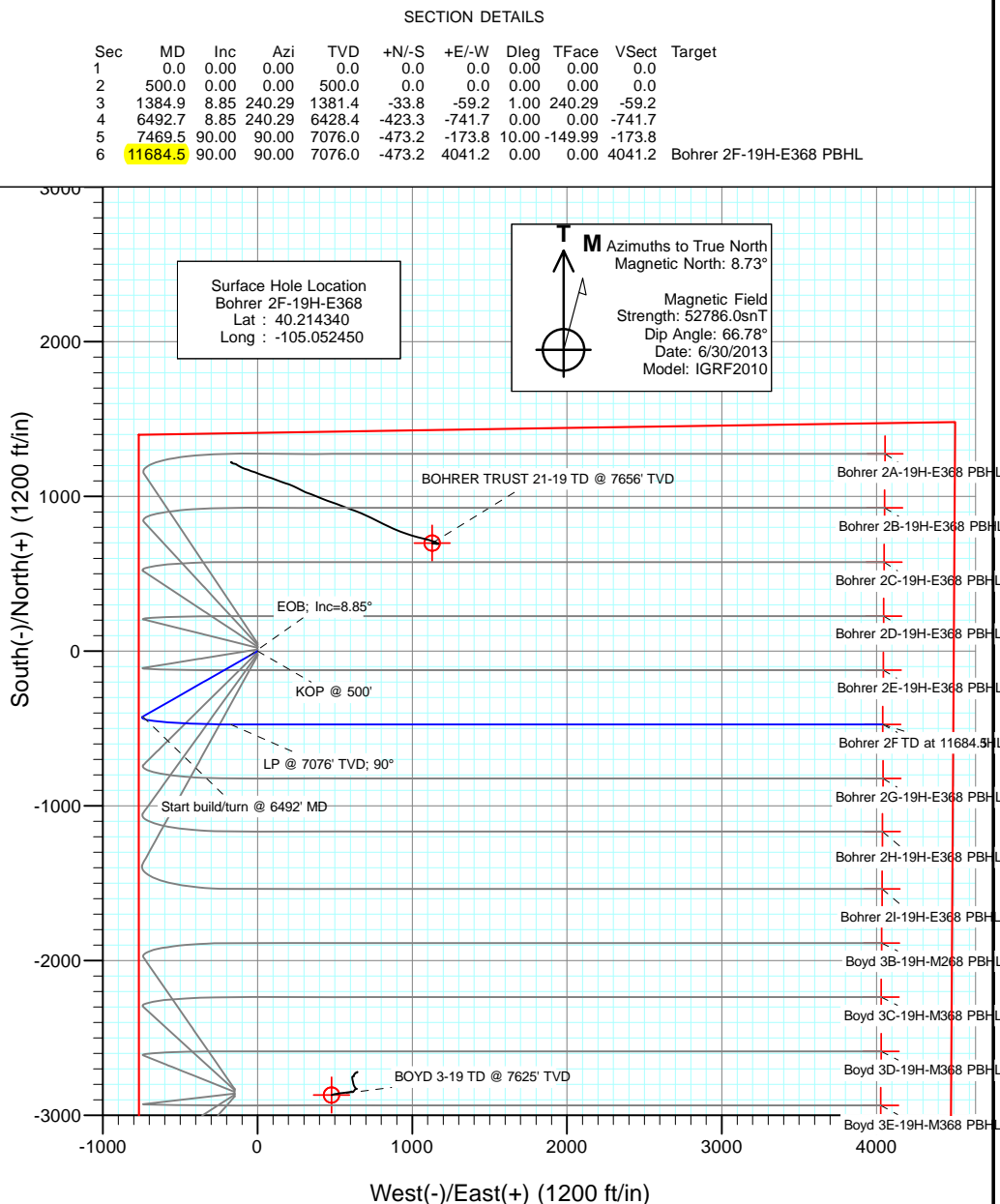
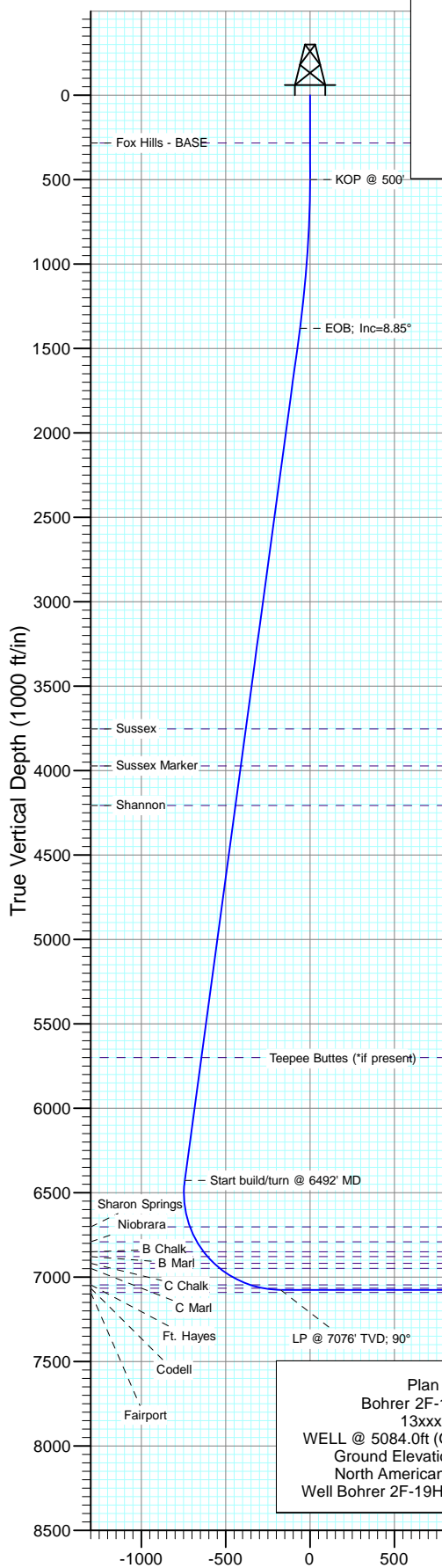




Project: DJ Wattenberg  
Site: S19-T3N-R68W (Bohrer)  
Well: Bohrer 2F-19H-E368  
Wellbore: Hz  
Design: Plan #1



DESIGN TARGET DETAILS					
Name	+N/-S	+E/-W	Northing	Easting	Latitude
Bohrer 2F-19H-E368 PBHL	-473.2	4041.2	1320791.51	3129037.89	40.213040

FORMATION TOP DETAILS		
TVDPath	MDPath	Formation
284.0	284.0	Fox Hills - BASE
3754.0	3786.1	Sussex
3973.0	4007.7	Sussex Marker
4207.0	4244.6	Shannon
5700.0	5755.5	Teepee Buttes (*if present)
6703.0	6772.6	Sharon Springs
6791.0	6870.2	Niobrara
6850.0	6941.4	B Chalk
6879.0	6978.8	B Marl
6919.0	7034.3	C Chalk
6949.0	7080.0	C Marl
7046.0	7283.0	Ft. Hayes
7066.0	7362.1	Codell

Plan #1  
Bohrer 2F-19H-E368  
13xxx; LR  
WELL @ 5084.0ft (Original Well Elev)  
Ground Elevation @ 5059.0  
North American Datum 1983  
Well Bohrer 2F-19H-E368, True North

# Cathedral Energy Services

## Planning Report

<b>Database:</b>	USA EDM 5000 Multi Users DB	<b>Local Co-ordinate Reference:</b>	Well Bohrer 2F-19H-E368
<b>Company:</b>	EnCana Oil & Gas (USA) Inc	<b>TVD Reference:</b>	WELL @ 5084.0ft (Original Well Elev)
<b>Project:</b>	DJ Wattenberg	<b>MD Reference:</b>	WELL @ 5084.0ft (Original Well Elev)
<b>Site:</b>	S19-T3N-R68W (Bohrer)	<b>North Reference:</b>	True
<b>Well:</b>	Bohrer 2F-19H-E368	<b>Survey Calculation Method:</b>	Minimum Curvature
<b>Wellbore:</b>	Hz		
<b>Design:</b>	Plan #1		

<b>Project</b>	DJ Wattenberg		
<b>Map System:</b>	US State Plane 1983	<b>System Datum:</b>	Mean Sea Level
<b>Geo Datum:</b>	North American Datum 1983		
<b>Map Zone:</b>	Colorado Northern Zone		

Site		S19-T3N-R68W (Bohrer)			
Site Position:		Northing:	1,318,413.14 ft	Latitude:	40.206570
From:	Lat/Long	Easting:	3,124,860.64 ft	Longitude:	-105.052980
Position Uncertainty:	0.0 ft	Slot Radius:	13.200 in	Grid Convergence:	0.29 °

Well	Bohrer 2F-19H-E368					
Well Position	+N/-S	0.0 ft	Northing:	1,321,244.33 ft	Latitude:	40.214340
	+E/-W	0.0 ft	Easting:	3,124,994.39 ft	Longitude:	-105.052450
Position Uncertainty		0.0 ft	Wellhead Elevation:	ft	Ground Level:	5,059.0 ft

<b>Wellbore</b>	Hz				
<b>Magnetics</b>	<b>Model Name</b>	<b>Sample Date</b>	<b>Declination (°)</b>	<b>Dip Angle (°)</b>	<b>Field Strength (nT)</b>
	IGRF2010	6/30/2013	8.73	66.78	52,786

<b>Design</b>	Plan #1			
<b>Audit Notes:</b>				
<b>Version:</b>	<b>Phase:</b>	PLAN	<b>Tie On Depth:</b>	0.0
<b>Vertical Section:</b>	<b>Depth From (TVD) (ft)</b>	<b>+N/-S (ft)</b>	<b>+E/-W (ft)</b>	<b>Direction (°)</b>
	0.0	0.0	0.0	90.00

<b>Plan Sections</b>										
Measured Depth (ft)	Inclination (°)	Azimuth (°)	Vertical Depth (ft)	+N/-S (ft)	+E/-W (ft)	Dogleg Rate (°/100ft)	Build Rate (°/100ft)	Turn Rate (°/100ft)	TFO (°)	Target
0.0	0.00	0.00	0.0	0.0	0.0	0.00	0.00	0.00	0.00	
500.0	0.00	0.00	500.0	0.0	0.0	0.00	0.00	0.00	0.00	
1,384.9	8.85	240.29	1,381.4	-33.8	-59.2	1.00	1.00	0.00	240.29	
6,492.7	8.85	240.29	6,428.4	-423.3	-741.7	0.00	0.00	0.00	0.00	
7,469.5	90.00	90.00	7,076.0	-473.2	-173.8	10.00	8.31	-15.39	-149.99	
11,684.5	90.00	90.00	7,076.0	-473.2	4,041.2	0.00	0.00	0.00	0.00	Bohrer 2F-19H-E368

# Cathedral Energy Services

## Planning Report

**Database:** USA EDM 5000 Multi Users DB  
**Company:** EnCana Oil & Gas (USA) Inc  
**Project:** DJ Wattenberg  
**Site:** S19-T3N-R68W (Bohrer)  
**Well:** Bohrer 2F-19H-E368  
**Wellbore:** Hz  
**Design:** Plan #1

**Local Co-ordinate Reference:** Well Bohrer 2F-19H-E368  
**TVD Reference:** WELL @ 5084.0ft (Original Well Elev)  
**MD Reference:** WELL @ 5084.0ft (Original Well Elev)  
**North Reference:** True  
**Survey Calculation Method:** Minimum Curvature

### Planned Survey

Measured Depth (ft)	Inclination (°)	Azimuth (°)	Vertical Depth (ft)	+N/-S (ft)	+E/-W (ft)	Vertical Section (ft)	Dogleg Rate (°/100ft)	Build Rate (°/100ft)	Comments / Formations
0.0	0.00	0.00	0.0	0.0	0.0	0.0	0.00	0.00	
100.0	0.00	0.00	100.0	0.0	0.0	0.0	0.00	0.00	
200.0	0.00	0.00	200.0	0.0	0.0	0.0	0.00	0.00	
284.0	0.00	0.00	284.0	0.0	0.0	0.0	0.00	0.00	Fox Hills - BASE
300.0	0.00	0.00	300.0	0.0	0.0	0.0	0.00	0.00	
400.0	0.00	0.00	400.0	0.0	0.0	0.0	0.00	0.00	
500.0	0.00	0.00	500.0	0.0	0.0	0.0	0.00	0.00	KOP @ 500'
600.0	1.00	240.29	600.0	-0.4	-0.8	-0.8	1.00	1.00	
700.0	2.00	240.29	700.0	-1.7	-3.0	-3.0	1.00	1.00	
800.0	3.00	240.29	799.9	-3.9	-6.8	-6.8	1.00	1.00	
900.0	4.00	240.29	899.7	-6.9	-12.1	-12.1	1.00	1.00	
1,000.0	5.00	240.29	999.4	-10.8	-18.9	-18.9	1.00	1.00	
1,100.0	6.00	240.29	1,098.9	-15.6	-27.3	-27.3	1.00	1.00	
1,200.0	7.00	240.29	1,198.3	-21.2	-37.1	-37.1	1.00	1.00	
1,300.0	8.00	240.29	1,297.4	-27.6	-48.4	-48.4	1.00	1.00	
1,384.9	8.85	240.29	1,381.4	-33.8	-59.2	-59.2	1.00	1.00	EOB; Inc=8.85°
1,400.0	8.85	240.29	1,396.3	-35.0	-61.2	-61.2	0.00	0.00	
1,500.0	8.85	240.29	1,495.1	-42.6	-74.6	-74.6	0.00	0.00	
1,600.0	8.85	240.29	1,593.9	-50.2	-88.0	-88.0	0.00	0.00	
1,700.0	8.85	240.29	1,692.7	-57.8	-101.3	-101.3	0.00	0.00	
1,800.0	8.85	240.29	1,791.5	-65.5	-114.7	-114.7	0.00	0.00	
1,900.0	8.85	240.29	1,890.4	-73.1	-128.1	-128.1	0.00	0.00	
2,000.0	8.85	240.29	1,989.2	-80.7	-141.4	-141.4	0.00	0.00	
2,100.0	8.85	240.29	2,088.0	-88.3	-154.8	-154.8	0.00	0.00	
2,200.0	8.85	240.29	2,186.8	-96.0	-168.1	-168.1	0.00	0.00	
2,300.0	8.85	240.29	2,285.6	-103.6	-181.5	-181.5	0.00	0.00	
2,400.0	8.85	240.29	2,384.4	-111.2	-194.9	-194.9	0.00	0.00	
2,500.0	8.85	240.29	2,483.2	-118.8	-208.2	-208.2	0.00	0.00	
2,600.0	8.85	240.29	2,582.0	-126.5	-221.6	-221.6	0.00	0.00	
2,700.0	8.85	240.29	2,680.8	-134.1	-234.9	-234.9	0.00	0.00	
2,800.0	8.85	240.29	2,779.6	-141.7	-248.3	-248.3	0.00	0.00	
2,900.0	8.85	240.29	2,878.5	-149.3	-261.7	-261.7	0.00	0.00	
3,000.0	8.85	240.29	2,977.3	-156.9	-275.0	-275.0	0.00	0.00	
3,100.0	8.85	240.29	3,076.1	-164.6	-288.4	-288.4	0.00	0.00	
3,200.0	8.85	240.29	3,174.9	-172.2	-301.7	-301.7	0.00	0.00	
3,300.0	8.85	240.29	3,273.7	-179.8	-315.1	-315.1	0.00	0.00	
3,400.0	8.85	240.29	3,372.5	-187.4	-328.5	-328.5	0.00	0.00	
3,500.0	8.85	240.29	3,471.3	-195.1	-341.8	-341.8	0.00	0.00	
3,600.0	8.85	240.29	3,570.1	-202.7	-355.2	-355.2	0.00	0.00	
3,700.0	8.85	240.29	3,668.9	-210.3	-368.5	-368.5	0.00	0.00	
3,786.1	8.85	240.29	3,754.0	-216.9	-380.0	-380.0	0.00	0.00	Sussex
3,800.0	8.85	240.29	3,767.7	-217.9	-381.9	-381.9	0.00	0.00	
3,900.0	8.85	240.29	3,866.6	-225.6	-395.3	-395.3	0.00	0.00	
4,000.0	8.85	240.29	3,965.4	-233.2	-408.6	-408.6	0.00	0.00	
4,007.7	8.85	240.29	3,973.0	-233.8	-409.7	-409.7	0.00	0.00	Sussex Marker
4,100.0	8.85	240.29	4,064.2	-240.8	-422.0	-422.0	0.00	0.00	
4,200.0	8.85	240.29	4,163.0	-248.4	-435.3	-435.3	0.00	0.00	
4,244.6	8.85	240.29	4,207.0	-251.8	-441.3	-441.3	0.00	0.00	Shannon
4,300.0	8.85	240.29	4,261.8	-256.1	-448.7	-448.7	0.00	0.00	
4,400.0	8.85	240.29	4,360.6	-263.7	-462.1	-462.1	0.00	0.00	
4,500.0	8.85	240.29	4,459.4	-271.3	-475.4	-475.4	0.00	0.00	
4,600.0	8.85	240.29	4,558.2	-278.9	-488.8	-488.8	0.00	0.00	

# Cathedral Energy Services

## Planning Report

**Database:** USA EDM 5000 Multi Users DB  
**Company:** EnCana Oil & Gas (USA) Inc  
**Project:** DJ Wattenberg  
**Site:** S19-T3N-R68W (Bohrer)  
**Well:** Bohrer 2F-19H-E368  
**Wellbore:** Hz  
**Design:** Plan #1

**Local Co-ordinate Reference:**  
**TVD Reference:**  
**MD Reference:**  
**North Reference:**  
**Survey Calculation Method:**

Well Bohrer 2F-19H-E368  
 WELL @ 5084.0ft (Original Well Elev)  
 WELL @ 5084.0ft (Original Well Elev)  
 True  
 Minimum Curvature

### Planned Survey

Measured Depth (ft)	Inclination (°)	Azimuth (°)	Vertical Depth (ft)	+N/-S (ft)	+E/-W (ft)	Vertical Section (ft)	Dogleg Rate (°/100ft)	Build Rate (°/100ft)	Comments / Formations
4,700.0	8.85	240.29	4,657.0	-286.6	-502.1	-502.1	0.00	0.00	
4,800.0	8.85	240.29	4,755.8	-294.2	-515.5	-515.5	0.00	0.00	
4,900.0	8.85	240.29	4,854.6	-301.8	-528.9	-528.9	0.00	0.00	
5,000.0	8.85	240.29	4,953.5	-309.4	-542.2	-542.2	0.00	0.00	
5,100.0	8.85	240.29	5,052.3	-317.1	-555.6	-555.6	0.00	0.00	
5,200.0	8.85	240.29	5,151.1	-324.7	-568.9	-568.9	0.00	0.00	
5,300.0	8.85	240.29	5,249.9	-332.3	-582.3	-582.3	0.00	0.00	
5,400.0	8.85	240.29	5,348.7	-339.9	-595.7	-595.7	0.00	0.00	
5,500.0	8.85	240.29	5,447.5	-347.6	-609.0	-609.0	0.00	0.00	
5,600.0	8.85	240.29	5,546.3	-355.2	-622.4	-622.4	0.00	0.00	
5,700.0	8.85	240.29	5,645.1	-362.8	-635.7	-635.7	0.00	0.00	
5,755.5	8.85	240.29	5,700.0	-367.0	-643.2	-643.2	0.00	0.00	Teepee Buttes (*if present)
5,800.0	8.85	240.29	5,743.9	-370.4	-649.1	-649.1	0.00	0.00	
5,900.0	8.85	240.29	5,842.7	-378.1	-662.5	-662.5	0.00	0.00	
6,000.0	8.85	240.29	5,941.6	-385.7	-675.8	-675.8	0.00	0.00	
6,100.0	8.85	240.29	6,040.4	-393.3	-689.2	-689.2	0.00	0.00	
6,200.0	8.85	240.29	6,139.2	-400.9	-702.5	-702.5	0.00	0.00	
6,300.0	8.85	240.29	6,238.0	-408.6	-715.9	-715.9	0.00	0.00	
6,400.0	8.85	240.29	6,336.8	-416.2	-729.3	-729.3	0.00	0.00	
6,492.7	8.85	240.29	6,428.4	-423.3	-741.7	-741.7	0.00	0.00	Start build/turn @ 6492' MD
6,500.0	8.23	237.74	6,435.6	-423.8	-742.6	-742.6	10.00	-8.55	
6,600.0	5.36	145.30	6,535.1	-431.5	-746.0	-746.0	10.00	-2.87	
6,700.0	13.76	108.36	6,633.7	-439.1	-732.0	-732.0	10.00	8.40	
6,772.6	20.76	101.74	6,703.0	-444.4	-711.2	-711.2	10.00	9.64	Sharon Springs
6,800.0	23.45	100.25	6,728.4	-446.4	-701.1	-701.1	10.00	9.79	
6,870.2	30.36	97.57	6,791.0	-451.2	-669.7	-669.7	10.00	9.85	Niobrara
6,900.0	33.31	96.74	6,816.3	-453.2	-654.1	-654.1	10.00	9.89	
6,941.4	37.41	95.79	6,850.0	-455.8	-630.3	-630.3	10.00	9.91	B Chalk
6,978.8	41.13	95.07	6,879.0	-458.0	-606.7	-606.7	10.00	9.93	B Marl
7,000.0	43.23	94.71	6,894.7	-459.2	-592.5	-592.5	10.00	9.93	
7,034.3	46.64	94.18	6,919.0	-461.1	-568.4	-568.4	10.00	9.94	C Chalk
7,080.0	51.19	93.56	6,949.0	-463.4	-534.0	-534.0	10.00	9.95	C Marl
7,100.0	53.18	93.31	6,961.3	-464.4	-518.3	-518.3	10.00	9.95	
7,200.0	63.14	92.24	7,014.0	-468.4	-433.5	-433.5	10.00	9.96	
7,283.0	71.41	91.49	7,046.0	-470.9	-357.1	-357.1	10.00	9.97	Ft. Hayes
7,300.0	73.10	91.34	7,051.2	-471.3	-340.9	-340.9	10.00	9.97	
7,362.1	79.30	90.84	7,066.0	-472.5	-280.6	-280.6	10.00	9.97	Codell
7,400.0	83.07	90.54	7,071.8	-472.9	-243.2	-243.2	10.00	9.97	
7,469.5	90.00	90.00	7,076.0	-473.2	-173.8	-173.8	10.00	9.97	LP @ 7076' TVD; 90°
7,500.0	90.00	90.00	7,076.0	-473.2	-143.3	-143.3	0.00	0.00	
7,600.0	90.00	90.00	7,076.0	-473.2	-43.3	-43.3	0.00	0.00	
7,700.0	90.00	90.00	7,076.0	-473.2	56.7	56.7	0.00	0.00	
7,800.0	90.00	90.00	7,076.0	-473.2	156.7	156.7	0.00	0.00	
7,900.0	90.00	90.00	7,076.0	-473.2	256.7	256.7	0.00	0.00	
8,000.0	90.00	90.00	7,076.0	-473.2	356.7	356.7	0.00	0.00	
8,100.0	90.00	90.00	7,076.0	-473.2	456.7	456.7	0.00	0.00	
8,200.0	90.00	90.00	7,076.0	-473.2	556.7	556.7	0.00	0.00	
8,300.0	90.00	90.00	7,076.0	-473.2	656.7	656.7	0.00	0.00	
8,400.0	90.00	90.00	7,076.0	-473.2	756.7	756.7	0.00	0.00	
8,500.0	90.00	90.00	7,076.0	-473.2	856.7	856.7	0.00	0.00	
8,600.0	90.00	90.00	7,076.0	-473.2	956.7	956.7	0.00	0.00	
8,700.0	90.00	90.00	7,076.0	-473.2	1,056.7	1,056.7	0.00	0.00	

# Cathedral Energy Services

## Planning Report

<b>Database:</b>	USA EDM 5000 Multi Users DB	<b>Local Co-ordinate Reference:</b>	Well Bohrer 2F-19H-E368
<b>Company:</b>	EnCana Oil & Gas (USA) Inc	<b>TVD Reference:</b>	WELL @ 5084.0ft (Original Well Elev)
<b>Project:</b>	DJ Wattenberg	<b>MD Reference:</b>	WELL @ 5084.0ft (Original Well Elev)
<b>Site:</b>	S19-T3N-R68W (Bohrer)	<b>North Reference:</b>	True
<b>Well:</b>	Bohrer 2F-19H-E368	<b>Survey Calculation Method:</b>	Minimum Curvature
<b>Wellbore:</b>	Hz		
<b>Design:</b>	Plan #1		

Planned Survey									
Measured Depth (ft)	Inclination (°)	Azimuth (°)	Vertical Depth (ft)	+N/-S (ft)	+E/-W (ft)	Vertical Section (ft)	Dogleg Rate (°/100ft)	Build Rate (°/100ft)	Comments / Formations
8,800.0	90.00	90.00	7,076.0	-473.2	1,156.7	1,156.7	0.00	0.00	
8,900.0	90.00	90.00	7,076.0	-473.2	1,256.7	1,256.7	0.00	0.00	
9,000.0	90.00	90.00	7,076.0	-473.2	1,356.7	1,356.7	0.00	0.00	
9,100.0	90.00	90.00	7,076.0	-473.2	1,456.7	1,456.7	0.00	0.00	
9,200.0	90.00	90.00	7,076.0	-473.2	1,556.7	1,556.7	0.00	0.00	
9,300.0	90.00	90.00	7,076.0	-473.2	1,656.7	1,656.7	0.00	0.00	
9,400.0	90.00	90.00	7,076.0	-473.2	1,756.7	1,756.7	0.00	0.00	
9,500.0	90.00	90.00	7,076.0	-473.2	1,856.7	1,856.7	0.00	0.00	
9,600.0	90.00	90.00	7,076.0	-473.2	1,956.7	1,956.7	0.00	0.00	
9,700.0	90.00	90.00	7,076.0	-473.2	2,056.7	2,056.7	0.00	0.00	
9,800.0	90.00	90.00	7,076.0	-473.2	2,156.7	2,156.7	0.00	0.00	
9,900.0	90.00	90.00	7,076.0	-473.2	2,256.7	2,256.7	0.00	0.00	
10,000.0	90.00	90.00	7,076.0	-473.2	2,356.7	2,356.7	0.00	0.00	
10,100.0	90.00	90.00	7,076.0	-473.2	2,456.7	2,456.7	0.00	0.00	
10,200.0	90.00	90.00	7,076.0	-473.2	2,556.7	2,556.7	0.00	0.00	
10,300.0	90.00	90.00	7,076.0	-473.2	2,656.7	2,656.7	0.00	0.00	
10,400.0	90.00	90.00	7,076.0	-473.2	2,756.7	2,756.7	0.00	0.00	
10,500.0	90.00	90.00	7,076.0	-473.2	2,856.7	2,856.7	0.00	0.00	
10,600.0	90.00	90.00	7,076.0	-473.2	2,956.7	2,956.7	0.00	0.00	
10,700.0	90.00	90.00	7,076.0	-473.2	3,056.7	3,056.7	0.00	0.00	
10,800.0	90.00	90.00	7,076.0	-473.2	3,156.7	3,156.7	0.00	0.00	
10,900.0	90.00	90.00	7,076.0	-473.2	3,256.7	3,256.7	0.00	0.00	
11,000.0	90.00	90.00	7,076.0	-473.2	3,356.7	3,356.7	0.00	0.00	
11,100.0	90.00	90.00	7,076.0	-473.2	3,456.7	3,456.7	0.00	0.00	
11,200.0	90.00	90.00	7,076.0	-473.2	3,556.7	3,556.7	0.00	0.00	
11,300.0	90.00	90.00	7,076.0	-473.2	3,656.7	3,656.7	0.00	0.00	
11,400.0	90.00	90.00	7,076.0	-473.2	3,756.7	3,756.7	0.00	0.00	
11,500.0	90.00	90.00	7,076.0	-473.2	3,856.7	3,856.7	0.00	0.00	
11,600.0	90.00	90.00	7,076.0	-473.2	3,956.7	3,956.7	0.00	0.00	
11,684.5	90.00	90.00	7,076.0	-473.2	4,041.2	4,041.2	0.00	0.00	TD at 11684.5

Targets									
Target Name	Dip Angle (°)	Dip Dir. (°)	TVD (ft)	+N/-S (ft)	+E/-W (ft)	Northing (ft)	Easting (ft)	Latitude	Longitude
- hit/miss target									
- Shape									
Bohrer 2F-19H-E368 PB	0.00	0.00	7,076.0	-473.2	4,041.2	1,320,791.51	3,129,037.89	40.213040	-105.037980
- plan hits target center									
- Point									

# Cathedral Energy Services

## Planning Report

<b>Database:</b>	USA EDM 5000 Multi Users DB	<b>Local Co-ordinate Reference:</b>	Well Bohrer 2F-19H-E368
<b>Company:</b>	EnCana Oil & Gas (USA) Inc	<b>TVD Reference:</b>	WELL @ 5084.0ft (Original Well Elev)
<b>Project:</b>	DJ Wattenberg	<b>MD Reference:</b>	WELL @ 5084.0ft (Original Well Elev)
<b>Site:</b>	S19-T3N-R68W (Bohrer)	<b>North Reference:</b>	True
<b>Well:</b>	Bohrer 2F-19H-E368	<b>Survey Calculation Method:</b>	Minimum Curvature
<b>Wellbore:</b>	Hz		
<b>Design:</b>	Plan #1		

Formations						
Measured Depth (ft)	Vertical Depth (ft)	Name	Lithology	Dip (°)	Dip Direction (°)	
284.0	284.0	Fox Hills - BASE				
3,786.1	3,754.0	Sussex				
4,007.7	3,973.0	Sussex Marker				
4,244.6	4,207.0	Shannon				
5,755.5	5,700.0	Teepee Buttes (*if present)				
6,772.6	6,703.0	Sharon Springs				
6,870.2	6,791.0	Niobrara				
6,941.4	6,850.0	B Chalk				
6,978.8	6,879.0	B Marl				
7,034.3	6,919.0	C Chalk				
7,080.0	6,949.0	C Marl				
7,283.0	7,046.0	Ft. Hayes				
7,362.1	7,066.0	Codell				

Plan Annotations					
Measured Depth (ft)	Vertical Depth (ft)	Local Coordinates			
		+N/-S (ft)	+E/-W (ft)	Comment	
500.0	500.0	0.0	0.0	KOP @ 500'	
1,384.9	1,381.4	-33.8	-59.2	EOB; Inc=8.85°	
6,492.7	6,428.4	-423.3	-741.7	Start build/turn @ 6492' MD	
7,469.5	7,076.0	-473.2	-173.8	LP @ 7076' TVD; 90°	
11,684.5	7,076.0	-473.2	4,041.2	TD at 11684.5	

# **EnCana Oil & Gas (USA) Inc**

**DJ Wattenberg**

**S19-T3N-R68W (Bohrer)**

**Bohrer 2F-19H-E368**

**Hz**

**Plan #1**

## **Anticollision Report**

**30 June, 2013**

# Cathedral Energy Services

## Anticollision Report

<b>Company:</b>	EnCana Oil & Gas (USA) Inc	<b>Local Co-ordinate Reference:</b>	Well Bohrer 2F-19H-E368
<b>Project:</b>	DJ Wattenberg	<b>TVD Reference:</b>	WELL @ 5084.0ft (Original Well Elev)
<b>Reference Site:</b>	S19-T3N-R68W (Bohrer)	<b>MD Reference:</b>	WELL @ 5084.0ft (Original Well Elev)
<b>Site Error:</b>	0.0ft	<b>North Reference:</b>	True
<b>Reference Well:</b>	Bohrer 2F-19H-E368	<b>Survey Calculation Method:</b>	Minimum Curvature
<b>Well Error:</b>	0.0ft	<b>Output errors are at</b>	2.00 sigma
<b>Reference Wellbore</b>	Hz	<b>Database:</b>	USA EDM 5000 Multi Users DB
<b>Reference Design:</b>	Plan #1	<b>Offset TVD Reference:</b>	Offset Datum

Reference	Plan #1		
Filter type:	NO GLOBAL FILTER: Using user defined selection & filtering criteria		
Interpolation Method:	MD Interval 100.0ft	Error Model:	Systematic Ellipse
Depth Range:	Unlimited	Scan Method:	Closest Approach 3D
Results Limited by:	Maximum center-center distance of 500.0ft	Error Surface:	Elliptical Conic
Warning Levels Evaluated at:	2.00 Sigma		

Survey Tool Program		Date	6/30/2013		
From (ft)	To (ft)	Survey (Wellbore)	Tool Name	Description	
0.0	11,684.5	Plan #1 (Hz)	Geolink MWD	Geolink MWD	

Summary						
Site Name	Reference Measured Depth (ft)	Offset Measured Depth (ft)	Distance Between Centres (ft)	Distance Between Ellipses (ft)	Separation Factor	Warning
Offset Well - Wellbore - Design						
S19-T3N-R68W (Bohrer)						
Bohrer 2A-19H-E368 - Hz - Plan #1	166.3	167.3	51.0	50.5	103.013	CC
Bohrer 2A-19H-E368 - Hz - Plan #1	200.0	201.0	51.0	50.4	83.251	ES
Bohrer 2A-19H-E368 - Hz - Plan #1	800.0	794.4	81.5	78.8	29.812	SF
Bohrer 2B-19H-E368 - Hz - Plan #1	266.3	267.3	40.1	39.2	47.465	CC
Bohrer 2B-19H-E368 - Hz - Plan #1	300.0	301.0	40.1	39.1	41.664	ES
Bohrer 2B-19H-E368 - Hz - Plan #1	800.0	797.2	60.5	57.7	22.103	SF
Bohrer 2C-19H-E368 - Hz - Plan #1	400.0	400.0	29.1	27.8	22.263	CC, ES
Bohrer 2C-19H-E368 - Hz - Plan #1	700.0	698.9	35.4	33.0	14.948	SF
Bohrer 2D-19H-E368 - Hz - Plan #1	500.0	500.0	21.9	20.2	13.182	CC, ES
Bohrer 2D-19H-E368 - Hz - Plan #1	800.0	799.6	27.7	24.9	10.147	SF
Bohrer 2E-19H-E368 - Hz - Plan #1	500.0	500.0	10.9	9.3	6.591	CC, ES
Bohrer 2E-19H-E368 - Hz - Plan #1	11,684.5	11,451.9	411.0	224.9	2.209	SF
Bohrer 2G-19H-E368 - Hz - Plan #1	400.0	400.0	7.3	6.0	5.566	CC, ES
Bohrer 2G-19H-E368 - Hz - Plan #1	11,684.5	11,500.7	411.0	224.7	2.206	SF
Bohrer 2H-19H-E368 - Hz - Plan #1	300.0	299.0	18.2	17.3	19.009	CC, ES
Bohrer 2H-19H-E368 - Hz - Plan #1	800.0	796.9	32.4	29.7	11.916	SF
Bohrer 2I-19H-E368 - Hz - Plan #1	200.0	199.0	29.1	28.5	47.844	CC, ES
Bohrer 2I-19H-E368 - Hz - Plan #1	1,000.0	992.3	67.2	63.7	19.326	SF
BOHRER TRUST 21-19 (EXISTING) - ENCANA WELL - S						Out of range
BOYD 3-19 (EXISTING) - ENCANA WELL - SURVEYS						Out of range
Boyd 3B-19H-M368 - Hz - Plan #1						Out of range
Boyd 3C-19H-M368 - Hz - Plan #1						Out of range
Boyd 3D-19H-M368 - Hz - Plan #1						Out of range
Boyd 3E-19H-M368 - Hz - Plan #1						Out of range
Boyd 3F-19H-M368 - Hz - Plan #1						Out of range
Boyd 3G-19H-M368 - Hz - Plan #1						Out of range

# Cathedral Energy Services

## Anticollision Report

<b>Company:</b>	EnCana Oil & Gas (USA) Inc	<b>Local Co-ordinate Reference:</b>	Well Bohrer 2F-19H-E368
<b>Project:</b>	DJ Wattenberg	<b>TVD Reference:</b>	WELL @ 5084.0ft (Original Well Elev)
<b>Reference Site:</b>	S19-T3N-R68W (Bohrer)	<b>MD Reference:</b>	WELL @ 5084.0ft (Original Well Elev)
<b>Site Error:</b>	0.0ft	<b>North Reference:</b>	True
<b>Reference Well:</b>	Bohrer 2F-19H-E368	<b>Survey Calculation Method:</b>	Minimum Curvature
<b>Well Error:</b>	0.0ft	<b>Output errors are at</b>	2.00 sigma
<b>Reference Wellbore</b>	Hz	<b>Database:</b>	USA EDM 5000 Multi Users DB
<b>Reference Design:</b>	Plan #1	<b>Offset TVD Reference:</b>	Offset Datum

Offset Design S19-T3N-R68W (Bohrer) - Bohrer 2A-19H-E368 - Hz - Plan #1													Offset Site Error:	0.0 ft
Survey Program: 0-Geolink MWD													Offset Well Error:	0.0 ft
Reference		Offset		Semi Major Axis			Distance					Warning		
Measured Depth (ft)	Vertical Depth (ft)	Measured Depth (ft)	Vertical Depth (ft)	Reference (ft)	Offset (ft)	Highside Toolface (°)	Offset Wellbore Centre +N/-S (ft)	+E/-W (ft)	Between Centres (ft)	Between Ellipses (ft)	Total Uncertainty Axis	Separation Factor		
0.0	0.0	1.0	1.0	0.0	0.0	0.00	51.0	0.0	51.0					
100.0	100.0	101.0	101.0	0.1	0.1	0.00	51.0	0.0	51.0	50.7	0.26	193.515		
166.3	166.3	167.3	167.3	0.2	0.2	0.00	51.0	0.0	51.0	50.5	0.50	103.013 CC		
200.0	200.0	201.0	201.0	0.3	0.3	0.00	51.0	0.0	51.0	50.4	0.61	83.251 ES		
300.0	300.0	300.0	300.0	0.5	0.5	-0.54	51.7	-0.5	51.7	50.8	0.96	53.885		
400.0	400.0	399.4	399.4	0.7	0.7	-2.05	53.9	-1.9	53.9	52.6	1.31	41.193		
500.0	500.0	498.5	498.4	0.8	0.8	-4.31	57.5	-4.3	57.7	56.0	1.66	34.733		
600.0	600.0	597.4	597.1	1.0	1.0	113.38	62.4	-7.7	63.4	61.4	2.01	31.491		
700.0	700.0	696.1	695.4	1.2	1.3	112.36	68.8	-11.9	71.3	69.0	2.37	30.110		
800.0	799.9	794.4	793.3	1.4	1.5	112.11	76.6	-17.1	81.5	78.8	2.73	29.812 SF		
900.0	899.7	892.3	890.6	1.6	1.7	112.41	85.7	-23.3	93.8	90.7	3.11	30.170		
1,000.0	999.4	989.7	987.2	1.8	2.0	113.03	96.1	-30.2	108.3	104.8	3.50	30.933		
1,100.0	1,098.9	1,086.5	1,083.0	2.0	2.3	113.82	107.9	-38.1	125.0	121.1	3.91	31.940		
1,200.0	1,198.3	1,182.7	1,177.9	2.2	2.6	114.68	120.8	-46.8	143.9	139.6	4.35	33.087		
1,300.0	1,297.4	1,278.2	1,271.8	2.5	2.9	115.54	135.0	-56.3	165.0	160.2	4.81	34.301		
1,400.0	1,396.3	1,372.9	1,364.7	2.8	3.3	116.38	150.4	-66.6	188.3	183.0	5.30	35.539		
1,500.0	1,495.1	1,466.9	1,456.6	3.1	3.6	117.11	166.9	-77.7	213.2	207.4	5.80	36.744		
1,600.0	1,593.9	1,560.3	1,547.5	3.3	4.0	117.47	184.5	-89.5	239.5	233.1	6.32	37.908		
1,700.0	1,692.7	1,655.5	1,640.0	3.6	4.5	117.63	203.4	-102.2	266.7	259.9	6.84	38.975		
1,800.0	1,791.5	1,751.7	1,733.4	4.0	4.9	117.75	222.6	-115.0	294.1	286.7	7.38	39.853		
1,900.0	1,890.4	1,847.9	1,826.7	4.3	5.3	117.85	241.8	-127.9	321.4	313.5	7.92	40.589		
2,000.0	1,989.2	1,944.0	1,920.1	4.6	5.7	117.93	261.0	-140.7	348.8	340.3	8.46	41.213		
2,100.0	2,088.0	2,040.2	2,013.5	4.9	6.2	118.01	280.1	-153.6	376.1	367.1	9.01	41.747		
2,200.0	2,186.8	2,136.4	2,106.9	5.2	6.6	118.07	299.3	-166.4	403.5	393.9	9.56	42.209		
2,300.0	2,285.6	2,232.6	2,200.2	5.5	7.0	118.12	318.5	-179.3	430.8	420.7	10.11	42.612		
2,400.0	2,384.4	2,328.8	2,293.6	5.8	7.4	118.17	337.7	-192.1	458.2	447.5	10.66	42.966		
2,500.0	2,483.2	2,425.0	2,387.0	6.1	7.9	118.22	356.8	-205.0	485.5	474.3	11.22	43.279		

# Cathedral Energy Services

## Anticollision Report

<b>Company:</b>	EnCana Oil & Gas (USA) Inc	<b>Local Co-ordinate Reference:</b>	Well Bohrer 2F-19H-E368
<b>Project:</b>	DJ Wattenberg	<b>TVD Reference:</b>	WELL @ 5084.0ft (Original Well Elev)
<b>Reference Site:</b>	S19-T3N-R68W (Bohrer)	<b>MD Reference:</b>	WELL @ 5084.0ft (Original Well Elev)
<b>Site Error:</b>	0.0ft	<b>North Reference:</b>	True
<b>Reference Well:</b>	Bohrer 2F-19H-E368	<b>Survey Calculation Method:</b>	Minimum Curvature
<b>Well Error:</b>	0.0ft	<b>Output errors are at</b>	2.00 sigma
<b>Reference Wellbore</b>	Hz	<b>Database:</b>	USA EDM 5000 Multi Users DB
<b>Reference Design:</b>	Plan #1	<b>Offset TVD Reference:</b>	Offset Datum

Offset Design S19-T3N-R68W (Bohrer) - Bohrer 2B-19H-E368 - Hz - Plan #1													Offset Site Error:	0.0 ft
Survey Program: 0-Geolink MWD													Offset Well Error:	0.0 ft
Reference		Offset		Semi Major Axis			Distance				Total		Warning	
Measured Depth (ft)	Vertical Depth (ft)	Measured Depth (ft)	Vertical Depth (ft)	Reference (ft)	Offset (ft)	Highside Toolface (°)	Offset Wellbore Centre +N/-S (ft)	+E/-W (ft)	Between Centres (ft)	Between Ellipses (ft)	Uncertainty Axis	Separation Factor		
0.0	0.0	1.0	1.0	0.0	0.0	0.00	40.1	0.0	40.1					
100.0	100.0	101.0	101.0	0.1	0.1	0.00	40.1	0.0	40.1	39.8	0.26	152.032		
200.0	200.0	201.0	201.0	0.3	0.3	0.00	40.1	0.0	40.1	39.5	0.61	65.404		
266.3	266.3	267.3	267.3	0.4	0.4	0.00	40.1	0.0	40.1	39.2	0.84	47.465 CC		
300.0	300.0	301.0	301.0	0.5	0.5	0.00	40.1	0.0	40.1	39.1	0.96	41.664 ES		
400.0	400.0	400.5	400.5	0.7	0.7	-0.84	40.7	-0.6	40.7	39.4	1.31	31.088		
500.0	500.0	500.0	500.0	0.8	0.8	-3.18	42.6	-2.4	42.7	41.1	1.66	25.749		
600.0	600.0	599.2	599.1	1.0	1.0	114.06	45.8	-5.3	46.5	44.5	2.01	23.110		
700.0	700.0	698.3	698.0	1.2	1.2	112.62	50.2	-9.4	52.4	50.1	2.37	22.132		
800.0	799.9	797.2	796.6	1.4	1.4	112.05	55.9	-14.6	60.5	57.7	2.74	22.103 SF		
900.0	899.7	895.8	894.7	1.6	1.6	112.09	62.8	-21.0	70.5	67.4	3.11	22.648		
1,000.0	999.4	994.0	992.3	1.8	1.9	112.51	70.9	-28.5	82.7	79.1	3.51	23.542		
1,100.0	1,098.9	1,091.7	1,089.2	2.0	2.2	113.14	80.2	-37.1	96.8	92.9	3.93	24.643		
1,200.0	1,198.3	1,189.0	1,185.4	2.2	2.4	113.84	90.6	-46.7	113.1	108.7	4.37	25.854		
1,300.0	1,297.4	1,285.6	1,280.8	2.5	2.7	114.56	102.2	-57.4	131.3	126.5	4.84	27.109		
1,400.0	1,396.3	1,381.7	1,375.3	2.8	3.1	115.27	114.8	-69.1	151.6	146.3	5.34	28.371		
1,500.0	1,495.1	1,479.1	1,470.9	3.1	3.4	115.91	128.4	-81.6	173.0	167.1	5.86	29.511		
1,600.0	1,593.9	1,576.7	1,566.8	3.3	3.8	116.40	142.1	-94.2	194.4	188.0	6.39	30.424		
1,700.0	1,692.7	1,674.4	1,662.6	3.6	4.1	116.80	155.7	-106.8	215.8	208.9	6.92	31.170		
1,800.0	1,791.5	1,772.1	1,758.5	4.0	4.5	117.13	169.3	-119.4	237.3	229.8	7.47	31.786		
1,900.0	1,890.4	1,869.7	1,854.4	4.3	4.8	117.40	183.0	-132.0	258.7	250.7	8.01	32.303		
2,000.0	1,989.2	1,967.4	1,950.3	4.6	5.2	117.63	196.6	-144.6	280.2	271.6	8.56	32.741		
2,100.0	2,088.0	2,065.1	2,046.2	4.9	5.5	117.83	210.2	-157.2	301.6	292.5	9.11	33.117		
2,200.0	2,186.8	2,162.7	2,142.1	5.2	5.9	118.00	223.9	-169.8	323.1	313.4	9.66	33.442		
2,300.0	2,285.6	2,260.4	2,238.0	5.5	6.3	118.15	237.5	-182.4	344.6	334.3	10.22	33.726		
2,400.0	2,384.4	2,358.1	2,333.8	5.8	6.6	118.28	251.2	-195.0	366.0	355.2	10.77	33.975		
2,500.0	2,483.2	2,455.7	2,429.7	6.1	7.0	118.40	264.8	-207.6	387.5	376.1	11.33	34.196		
2,600.0	2,582.0	2,553.4	2,525.6	6.4	7.3	118.50	278.4	-220.2	408.9	397.0	11.89	34.393		
2,700.0	2,680.8	2,651.1	2,621.5	6.8	7.7	118.60	292.1	-232.8	430.4	418.0	12.45	34.569		
2,800.0	2,779.6	2,748.7	2,717.4	7.1	8.1	118.68	305.7	-245.4	451.9	438.9	13.01	34.728		
2,900.0	2,878.5	2,846.4	2,813.3	7.4	8.4	118.76	319.3	-258.0	473.3	459.8	13.57	34.871		
3,000.0	2,977.3	2,944.1	2,909.2	7.7	8.8	118.83	333.0	-270.6	494.8	480.7	14.14	35.002		

# Cathedral Energy Services

## Anticollision Report

<b>Company:</b>	EnCana Oil & Gas (USA) Inc	<b>Local Co-ordinate Reference:</b>	Well Bohrer 2F-19H-E368
<b>Project:</b>	DJ Wattenberg	<b>TVD Reference:</b>	WELL @ 5084.0ft (Original Well Elev)
<b>Reference Site:</b>	S19-T3N-R68W (Bohrer)	<b>MD Reference:</b>	WELL @ 5084.0ft (Original Well Elev)
<b>Site Error:</b>	0.0ft	<b>North Reference:</b>	True
<b>Reference Well:</b>	Bohrer 2F-19H-E368	<b>Survey Calculation Method:</b>	Minimum Curvature
<b>Well Error:</b>	0.0ft	<b>Output errors are at</b>	2.00 sigma
<b>Reference Wellbore</b>	Hz	<b>Database:</b>	USA EDM 5000 Multi Users DB
<b>Reference Design:</b>	Plan #1	<b>Offset TVD Reference:</b>	Offset Datum

Offset Design S19-T3N-R68W (Bohrer) - Bohrer 2C-19H-E368 - Hz - Plan #1													Offset Site Error:	0.0 ft
Survey Program: 0-Geolink MWD													Offset Well Error:	0.0 ft
Reference		Offset		Semi Major Axis			Distance				Total Uncertainty Axis	Separation Factor	Warning	
Measured Depth (ft)	Vertical Depth (ft)	Measured Depth (ft)	Vertical Depth (ft)	Reference (ft)	Offset (ft)	Highside Toolface (°)	Offset Wellbore Centre +N/-S (ft)	+E/-W (ft)	Between Centres (ft)	Between Ellipses (ft)				
0.0	0.0	0.0	0.0	0.0	0.0	0.00	29.1	0.0	29.1					
100.0	100.0	100.0	100.0	0.1	0.1	0.00	29.1	0.0	29.1	28.9	0.26	111.317		
200.0	200.0	200.0	200.0	0.3	0.3	0.00	29.1	0.0	29.1	28.5	0.61	47.707		
300.0	300.0	300.0	300.0	0.5	0.5	0.00	29.1	0.0	29.1	28.2	0.96	30.359		
400.0	400.0	400.0	400.0	0.7	0.7	0.00	29.1	0.0	29.1	27.8	1.31	22.263 CC, ES		
500.0	500.0	499.7	499.7	0.8	0.8	-1.40	29.6	-0.7	29.6	28.0	1.66	17.876		
600.0	600.0	599.4	599.3	1.0	1.0	115.81	31.1	-2.9	31.6	29.6	2.01	15.713		
700.0	700.0	698.9	698.8	1.2	1.2	114.00	33.4	-6.5	35.4	33.0	2.37	14.948 SF		
800.0	799.9	798.3	798.0	1.4	1.4	112.93	36.8	-11.6	41.0	38.2	2.73	15.000		
900.0	899.7	897.6	896.9	1.6	1.6	112.45	41.0	-18.0	48.4	45.3	3.11	15.546		
1,000.0	999.4	996.6	995.5	1.8	1.8	112.37	46.2	-25.9	57.6	54.1	3.51	16.393		
1,100.0	1,098.9	1,095.2	1,093.5	2.0	2.0	112.54	52.4	-35.2	68.6	64.6	3.94	17.413		
1,200.0	1,198.3	1,193.6	1,191.1	2.2	2.3	112.82	59.4	-45.8	81.3	76.9	4.39	18.520		
1,300.0	1,297.4	1,291.6	1,288.0	2.5	2.6	113.16	67.3	-57.8	95.9	91.0	4.88	19.655		
1,400.0	1,396.3	1,389.7	1,384.8	2.8	2.9	113.61	76.0	-71.0	112.0	106.6	5.39	20.774		
1,500.0	1,495.1	1,488.3	1,482.1	3.1	3.2	114.23	84.9	-84.4	128.5	122.6	5.92	21.704		
1,600.0	1,593.9	1,586.9	1,579.4	3.3	3.5	114.70	93.8	-97.9	145.1	138.6	6.46	22.451		
1,700.0	1,692.7	1,685.6	1,676.7	3.6	3.8	115.08	102.7	-111.3	161.6	154.6	7.01	23.061		
1,800.0	1,791.5	1,784.2	1,774.0	4.0	4.1	115.39	111.6	-124.8	178.2	170.6	7.56	23.566		
1,900.0	1,890.4	1,882.8	1,871.3	4.3	4.5	115.65	120.4	-138.2	194.7	186.6	8.12	23.990		
2,000.0	1,989.2	1,981.4	1,968.6	4.6	4.8	115.86	129.3	-151.7	211.3	202.6	8.68	24.350		
2,100.0	2,088.0	2,080.0	2,065.9	4.9	5.1	116.05	138.2	-165.1	227.8	218.6	9.24	24.659		
2,200.0	2,186.8	2,178.6	2,163.2	5.2	5.4	116.20	147.1	-178.6	244.4	234.6	9.80	24.927		
2,300.0	2,285.6	2,277.3	2,260.4	5.5	5.7	116.34	156.0	-192.0	261.0	250.6	10.37	25.160		
2,400.0	2,384.4	2,375.9	2,357.7	5.8	6.1	116.47	164.8	-205.5	277.5	266.6	10.94	25.366		
2,500.0	2,483.2	2,474.5	2,455.0	6.1	6.4	116.57	173.7	-218.9	294.1	282.6	11.51	25.548		
2,600.0	2,582.0	2,573.1	2,552.3	6.4	6.7	116.67	182.6	-232.4	310.7	298.6	12.08	25.711		
2,700.0	2,680.8	2,671.7	2,649.6	6.8	7.0	116.76	191.5	-245.8	327.2	314.6	12.66	25.856		
2,800.0	2,779.6	2,770.3	2,746.9	7.1	7.4	116.84	200.4	-259.3	343.8	330.6	13.23	25.988		
2,900.0	2,878.5	2,869.0	2,844.2	7.4	7.7	116.91	209.3	-272.7	360.4	346.6	13.80	26.107		
3,000.0	2,977.3	2,967.6	2,941.5	7.7	8.0	116.98	218.1	-286.2	377.0	362.6	14.38	26.215		
3,100.0	3,076.1	3,066.2	3,038.8	8.0	8.4	117.04	227.0	-299.6	393.5	378.6	14.96	26.313		
3,200.0	3,174.9	3,164.8	3,136.1	8.3	8.7	117.09	235.9	-313.1	410.1	394.6	15.53	26.404		
3,300.0	3,273.7	3,263.4	3,233.3	8.7	9.0	117.14	244.8	-326.5	426.7	410.6	16.11	26.487		
3,400.0	3,372.5	3,362.0	3,330.6	9.0	9.3	117.19	253.7	-340.0	443.3	426.6	16.69	26.564		
3,500.0	3,471.3	3,460.7	3,427.9	9.3	9.7	117.23	262.6	-353.4	459.8	442.6	17.26	26.635		
3,600.0	3,570.1	3,559.3	3,525.2	9.6	10.0	117.27	271.4	-366.9	476.4	458.6	17.84	26.701		
3,700.0	3,668.9	3,657.9	3,622.5	9.9	10.3	117.31	280.3	-380.3	493.0	474.6	18.42	26.762		

# Cathedral Energy Services

## Anticollision Report

<b>Company:</b>	EnCana Oil & Gas (USA) Inc	<b>Local Co-ordinate Reference:</b>	Well Bohrer 2F-19H-E368
<b>Project:</b>	DJ Wattenberg	<b>TVD Reference:</b>	WELL @ 5084.0ft (Original Well Elev)
<b>Reference Site:</b>	S19-T3N-R68W (Bohrer)	<b>MD Reference:</b>	WELL @ 5084.0ft (Original Well Elev)
<b>Site Error:</b>	0.0ft	<b>North Reference:</b>	True
<b>Reference Well:</b>	Bohrer 2F-19H-E368	<b>Survey Calculation Method:</b>	Minimum Curvature
<b>Well Error:</b>	0.0ft	<b>Output errors are at</b>	2.00 sigma
<b>Reference Wellbore</b>	Hz	<b>Database:</b>	USA EDM 5000 Multi Users DB
<b>Reference Design:</b>	Plan #1	<b>Offset TVD Reference:</b>	Offset Datum

Offset Design S19-T3N-R68W (Bohrer) - Bohrer 2D-19H-E368 - Hz - Plan #1													Offset Site Error:	0.0 ft
Survey Program: O-Geolink MWD													Offset Well Error:	0.0 ft
Reference		Offset		Semi Major Axis			Distance							
Measured Depth (ft)	Vertical Depth (ft)	Measured Depth (ft)	Vertical Depth (ft)	Reference (ft)	Offset (ft)	Highside Toolface (°)	Offset Wellbore Centre +N/-S (ft)	+E/-W (ft)	Between Centres (ft)	Between Ellipses (ft)	Total Uncertainty Axis	Separation Factor	Warning	
0.0	0.0	0.0	0.0	0.0	0.0	0.00	21.9	0.0	21.9					
100.0	100.0	100.0	100.0	0.1	0.1	0.00	21.9	0.0	21.9	21.6	0.26	83.488		
200.0	200.0	200.0	200.0	0.3	0.3	0.00	21.9	0.0	21.9	21.2	0.61	35.781		
300.0	300.0	300.0	300.0	0.5	0.5	0.00	21.9	0.0	21.9	20.9	0.96	22.769		
400.0	400.0	400.0	400.0	0.7	0.7	0.00	21.9	0.0	21.9	20.5	1.31	16.698		
500.0	500.0	500.0	500.0	0.8	0.8	0.00	21.9	0.0	21.9	20.2	1.66	13.182 CC, ES		
600.0	600.0	599.9	599.9	1.0	1.0	119.48	22.1	-0.8	22.5	20.5	2.01	11.207		
700.0	700.0	699.8	699.7	1.2	1.2	118.87	22.7	-3.4	24.4	22.1	2.36	10.345		
800.0	799.9	799.6	799.5	1.4	1.4	118.02	23.7	-7.6	27.7	24.9	2.73	10.147 SF		
900.0	899.7	899.4	899.0	1.6	1.6	117.13	25.2	-13.5	32.2	29.1	3.10	10.363		
1,000.0	999.4	999.0	998.4	1.8	1.8	116.28	27.1	-21.1	38.0	34.5	3.50	10.838		
1,100.0	1,098.9	1,098.5	1,097.5	2.0	2.0	115.53	29.4	-30.3	45.1	41.1	3.93	11.469		
1,200.0	1,198.3	1,197.9	1,196.2	2.2	2.2	114.89	32.1	-41.2	53.5	49.1	4.39	12.183		
1,300.0	1,297.4	1,297.2	1,294.6	2.5	2.5	114.37	35.2	-53.7	63.1	58.2	4.88	12.934		
1,400.0	1,396.3	1,396.6	1,393.1	2.8	2.7	114.77	38.5	-66.8	73.7	68.3	5.40	13.654		
1,500.0	1,495.1	1,496.0	1,491.6	3.1	3.0	115.52	41.7	-79.9	84.5	78.6	5.93	14.263		
1,600.0	1,593.9	1,595.4	1,590.1	3.3	3.3	116.09	45.0	-93.0	95.4	88.9	6.46	14.755		
1,700.0	1,692.7	1,694.8	1,688.6	3.6	3.6	116.55	48.2	-106.1	106.2	99.2	7.01	15.158		
1,800.0	1,791.5	1,794.3	1,787.1	4.0	3.8	116.92	51.5	-119.2	117.1	109.5	7.56	15.492		
1,900.0	1,890.4	1,893.7	1,885.6	4.3	4.1	117.23	54.7	-132.3	128.0	119.8	8.11	15.774		
2,000.0	1,989.2	1,993.1	1,984.1	4.6	4.4	117.50	58.0	-145.4	138.8	130.2	8.67	16.013		
2,100.0	2,088.0	2,092.5	2,082.5	4.9	4.7	117.72	61.2	-158.5	149.7	140.5	9.23	16.220		
2,200.0	2,186.8	2,191.9	2,181.0	5.2	5.0	117.91	64.5	-171.6	160.6	150.8	9.79	16.399		
2,300.0	2,285.6	2,291.3	2,279.5	5.5	5.3	118.08	67.7	-184.7	171.5	161.1	10.36	16.555		
2,400.0	2,384.4	2,390.7	2,378.0	5.8	5.5	118.23	71.0	-197.8	182.3	171.4	10.92	16.694		
2,500.0	2,483.2	2,490.1	2,476.5	6.1	5.8	118.36	74.2	-210.9	193.2	181.7	11.49	16.816		
2,600.0	2,582.0	2,589.5	2,575.0	6.4	6.1	118.48	77.5	-224.0	204.1	192.0	12.06	16.926		
2,700.0	2,680.8	2,688.9	2,673.5	6.8	6.4	118.59	80.8	-237.1	215.0	202.3	12.63	17.024		
2,800.0	2,779.6	2,788.3	2,771.9	7.1	6.7	118.68	84.0	-250.2	225.8	212.6	13.20	17.113		
2,900.0	2,878.5	2,887.7	2,870.4	7.4	7.0	118.77	87.3	-263.3	236.7	223.0	13.77	17.194		
3,000.0	2,977.3	2,987.1	2,968.9	7.7	7.3	118.85	90.5	-276.4	247.6	233.3	14.34	17.267		
3,100.0	3,076.1	3,086.5	3,067.4	8.0	7.6	118.92	93.8	-289.5	258.5	243.6	14.91	17.334		
3,200.0	3,174.9	3,185.9	3,165.9	8.3	7.9	118.99	97.0	-302.5	269.4	253.9	15.49	17.396		
3,300.0	3,273.7	3,285.3	3,264.4	8.7	8.2	119.05	100.3	-315.6	280.3	264.2	16.06	17.452		
3,400.0	3,372.5	3,384.7	3,362.9	9.0	8.4	119.11	103.5	-328.7	291.1	274.5	16.63	17.505		
3,500.0	3,471.3	3,484.1	3,461.3	9.3	8.7	119.16	106.8	-341.8	302.0	284.8	17.21	17.553		
3,600.0	3,570.1	3,583.6	3,559.8	9.6	9.0	119.21	110.0	-354.9	312.9	295.1	17.78	17.598		
3,700.0	3,668.9	3,683.0	3,658.3	9.9	9.3	119.25	113.3	-368.0	323.8	305.4	18.36	17.640		
3,800.0	3,767.7	3,782.4	3,756.8	10.3	9.6	119.30	116.5	-381.1	334.7	315.7	18.93	17.679		
3,900.0	3,866.6	3,881.8	3,855.3	10.6	9.9	119.34	119.8	-394.2	345.6	326.0	19.51	17.716		
4,000.0	3,965.4	3,981.2	3,953.8	10.9	10.2	119.38	123.1	-407.3	356.4	336.4	20.08	17.750		
4,100.0	4,064.2	4,080.6	4,052.2	11.2	10.5	119.41	126.3	-420.4	367.3	346.7	20.66	17.782		
4,200.0	4,163.0	4,180.0	4,150.7	11.5	10.8	119.44	129.6	-433.5	378.2	357.0	21.23	17.812		
4,300.0	4,261.8	4,279.4	4,249.2	11.9	11.1	119.48	132.8	-446.6	389.1	367.3	21.81	17.841		
4,400.0	4,360.6	4,378.8	4,347.7	12.2	11.4	119.51	136.1	-459.7	400.0	377.6	22.39	17.868		
4,500.0	4,459.4	4,478.2	4,446.2	12.5	11.7	119.53	139.3	-472.8	410.9	387.9	22.96	17.893		
4,600.0	4,558.2	4,577.6	4,544.7	12.8	12.0	119.56	142.6	-485.9	421.7	398.2	23.54	17.917		
4,700.0	4,657.0	4,677.0	4,643.2	13.1	12.2	119.59	145.8	-499.0	432.6	408.5	24.11	17.940		
4,800.0	4,755.8	4,776.4	4,741.6	13.5	12.5	119.61	149.1	-512.1	443.5	418.8	24.69	17.962		
4,900.0	4,854.6	4,875.8	4,840.1	13.8	12.8	119.63	152.3	-525.2	454.4	429.1	25.27	17.983		
5,000.0	4,953.5	4,975.2	4,938.6	14.1	13.1	119.66	155.6	-538.3	465.3	439.4	25.85	18.002		
5,100.0	5,052.3	5,074.6	5,037.1	14.4	13.4	119.68	158.8	-551.4	476.2	449.7	26.42	18.021		

CC - Min centre to center distance or convergent point, SF - min separation factor, ES - min ellipse separation

# Cathedral Energy Services

## Anticollision Report

<b>Company:</b>	EnCana Oil & Gas (USA) Inc	<b>Local Co-ordinate Reference:</b>	Well Bohrer 2F-19H-E368
<b>Project:</b>	DJ Wattenberg	<b>TVD Reference:</b>	WELL @ 5084.0ft (Original Well Elev)
<b>Reference Site:</b>	S19-T3N-R68W (Bohrer)	<b>MD Reference:</b>	WELL @ 5084.0ft (Original Well Elev)
<b>Site Error:</b>	0.0ft	<b>North Reference:</b>	True
<b>Reference Well:</b>	Bohrer 2F-19H-E368	<b>Survey Calculation Method:</b>	Minimum Curvature
<b>Well Error:</b>	0.0ft	<b>Output errors are at</b>	2.00 sigma
<b>Reference Wellbore</b>	Hz	<b>Database:</b>	USA EDM 5000 Multi Users DB
<b>Reference Design:</b>	Plan #1	<b>Offset TVD Reference:</b>	Offset Datum

Offset Design												S19-T3N-R68W (Bohrer) - Bohrer 2D-19H-E368 - Hz - Plan #1		Offset Site Error:		0.0 ft	
Survey Program:												0-Geolink MWD		Offset Well Error:		0.0 ft	
Reference		Offset		Semi Major Axis			Distance						Warning				
Measured Depth	Vertical Depth	Measured Depth	Vertical Depth	Reference	Offset	Highside Toolface	Offset Wellbore Centre		Between Centres	Between Ellipses	Total Uncertainty Axis	Separation Factor					
(ft)	(ft)	(ft)	(ft)	(ft)	(ft)	(°)	+N/-S (ft)	+E/-W (ft)	(ft)	(ft)							
5,200.0	5,151.1	5,174.0	5,135.6	14.8	13.7	119.70	162.1	-564.5	487.1	460.1	27.00	18.039					
5,300.0	5,249.9	5,273.4	5,234.1	15.1	14.0	119.72	165.3	-577.6	497.9	470.4	27.58	18.056					

# Cathedral Energy Services

## Anticollision Report

<b>Company:</b>	EnCana Oil & Gas (USA) Inc	<b>Local Co-ordinate Reference:</b>	Well Bohrer 2F-19H-E368
<b>Project:</b>	DJ Wattenberg	<b>TVD Reference:</b>	WELL @ 5084.0ft (Original Well Elev)
<b>Reference Site:</b>	S19-T3N-R68W (Bohrer)	<b>MD Reference:</b>	WELL @ 5084.0ft (Original Well Elev)
<b>Site Error:</b>	0.0ft	<b>North Reference:</b>	True
<b>Reference Well:</b>	Bohrer 2F-19H-E368	<b>Survey Calculation Method:</b>	Minimum Curvature
<b>Well Error:</b>	0.0ft	<b>Output errors are at</b>	2.00 sigma
<b>Reference Wellbore</b>	Hz	<b>Database:</b>	USA EDM 5000 Multi Users DB
<b>Reference Design:</b>	Plan #1	<b>Offset TVD Reference:</b>	Offset Datum

Offset Design S19-T3N-R68W (Bohrer) - Bohrer 2E-19H-E368 - Hz - Plan #1														Offset Site Error:	0.0 ft
Survey Program: O-Geolink MWD														Offset Well Error:	0.0 ft
Reference		Offset		Semi Major Axis			Distance						Warning		
Measured Depth (ft)	Vertical Depth (ft)	Measured Depth (ft)	Vertical Depth (ft)	Reference (ft)	Offset (ft)	Highside Toolface (°)	Offset Wellbore Centre +N/-S (ft)	+E/-W (ft)	Between Centres (ft)	Between Ellipses (ft)	Total Uncertainty Axis	Separation Factor			
0.0	0.0	0.0	0.0	0.0	0.0	0.00	10.9	0.0	10.9						
100.0	100.0	100.0	100.0	0.1	0.1	0.00	10.9	0.0	10.9	10.7	0.26	41.744			
200.0	200.0	200.0	200.0	0.3	0.3	0.00	10.9	0.0	10.9	10.3	0.61	17.890			
300.0	300.0	300.0	300.0	0.5	0.5	0.00	10.9	0.0	10.9	10.0	0.96	11.385			
400.0	400.0	400.0	400.0	0.7	0.7	0.00	10.9	0.0	10.9	9.6	1.31	8.349			
500.0	500.0	500.0	500.0	0.8	0.8	0.00	10.9	0.0	10.9	9.3	1.66	6.591 CC, ES			
600.0	600.0	600.0	600.0	1.0	1.0	123.53	10.9	0.0	11.4	9.4	2.01	5.672			
700.0	700.0	700.0	700.0	1.2	1.2	129.54	10.8	-0.9	12.7	10.3	2.36	5.388			
800.0	799.9	800.1	800.1	1.4	1.4	133.00	10.4	-3.4	14.7	11.9	2.71	5.401			
900.0	899.7	900.2	900.0	1.6	1.5	134.43	9.7	-7.8	17.2	14.1	3.08	5.576			
1,000.0	999.4	1,000.3	999.9	1.8	1.7	134.47	8.7	-13.8	20.2	16.7	3.45	5.841			
1,100.0	1,098.9	1,100.4	1,099.7	2.0	1.9	133.64	7.4	-21.6	23.7	19.9	3.85	6.156			
1,200.0	1,198.3	1,200.4	1,199.3	2.2	2.1	132.32	5.9	-31.0	27.8	23.5	4.28	6.494			
1,300.0	1,297.4	1,300.5	1,298.8	2.5	2.4	130.76	4.1	-42.2	32.4	27.6	4.73	6.836			
1,400.0	1,396.3	1,400.6	1,398.0	2.8	2.6	129.09	2.0	-55.1	37.5	32.3	5.23	7.167			
1,500.0	1,495.1	1,500.5	1,496.9	3.1	2.9	127.03	-0.3	-69.1	42.7	36.9	5.76	7.412			
1,600.0	1,593.9	1,600.3	1,595.7	3.3	3.2	125.38	-2.5	-83.2	47.9	41.6	6.31	7.602			
1,700.0	1,692.7	1,700.2	1,694.5	3.6	3.5	124.06	-4.8	-97.2	53.2	46.4	6.86	7.754			
1,800.0	1,791.5	1,800.0	1,793.4	4.0	3.7	122.98	-7.1	-111.3	58.5	51.1	7.43	7.877			
1,900.0	1,890.4	1,899.9	1,892.2	4.3	4.0	122.08	-9.3	-125.3	63.8	55.8	8.00	7.978			
2,000.0	1,989.2	1,999.8	1,991.0	4.6	4.3	121.31	-11.6	-139.4	69.1	60.6	8.58	8.062			
2,100.0	2,088.0	2,099.6	2,089.9	4.9	4.6	120.66	-13.9	-153.4	74.5	65.3	9.16	8.132			
2,200.0	2,186.8	2,199.5	2,188.7	5.2	4.9	120.09	-16.2	-167.5	79.8	70.1	9.74	8.192			
2,300.0	2,285.6	2,299.3	2,287.6	5.5	5.2	119.59	-18.4	-181.5	85.2	74.8	10.33	8.243			
2,400.0	2,384.4	2,399.2	2,386.4	5.8	5.5	119.16	-20.7	-195.5	90.5	79.6	10.92	8.287			
2,500.0	2,483.2	2,499.0	2,485.2	6.1	5.8	118.77	-23.0	-209.6	95.9	84.4	11.52	8.326			
2,600.0	2,582.0	2,598.9	2,584.1	6.4	6.1	118.42	-25.2	-223.6	101.2	89.1	12.11	8.360			
2,700.0	2,680.8	2,698.7	2,682.9	6.8	6.4	118.11	-27.5	-237.7	106.6	93.9	12.71	8.390			
2,800.0	2,779.6	2,798.6	2,781.7	7.1	6.7	117.83	-29.8	-251.7	112.0	98.7	13.30	8.417			
2,900.0	2,878.5	2,898.4	2,880.6	7.4	7.0	117.57	-32.1	-265.8	117.4	103.5	13.90	8.441			
3,000.0	2,977.3	2,998.3	2,979.4	7.7	7.3	117.33	-34.3	-279.8	122.7	108.2	14.50	8.463			
3,100.0	3,076.1	3,098.2	3,078.2	8.0	7.6	117.12	-36.6	-293.8	128.1	113.0	15.10	8.482			
3,200.0	3,174.9	3,198.0	3,177.1	8.3	7.9	116.92	-38.9	-307.9	133.5	117.8	15.70	8.500			
3,300.0	3,273.7	3,297.9	3,275.9	8.7	8.2	116.74	-41.1	-321.9	138.9	122.6	16.31	8.516			
3,400.0	3,372.5	3,397.7	3,374.7	9.0	8.5	116.57	-43.4	-336.0	144.2	127.3	16.91	8.531			
3,500.0	3,471.3	3,497.6	3,473.6	9.3	8.8	116.42	-45.7	-350.0	149.6	132.1	17.51	8.544			
3,600.0	3,570.1	3,597.4	3,572.4	9.6	9.1	116.27	-48.0	-364.1	155.0	136.9	18.12	8.557			
3,700.0	3,668.9	3,697.3	3,671.3	9.9	9.4	116.14	-50.2	-378.1	160.4	141.7	18.72	8.568			
3,800.0	3,767.7	3,797.1	3,770.1	10.3	9.7	116.01	-52.5	-392.1	165.8	146.5	19.32	8.579			
3,900.0	3,866.6	3,897.0	3,868.9	10.6	10.0	115.89	-54.8	-406.2	171.2	151.2	19.93	8.589			
4,000.0	3,965.4	3,996.8	3,967.8	10.9	10.3	115.78	-57.0	-420.2	176.6	156.0	20.53	8.598			
4,100.0	4,064.2	4,096.7	4,066.6	11.2	10.6	115.67	-59.3	-434.3	181.9	160.8	21.14	8.606			
4,200.0	4,163.0	4,196.5	4,165.4	11.5	10.9	115.57	-61.6	-448.3	187.3	165.6	21.75	8.614			
4,300.0	4,261.8	4,296.4	4,264.3	11.9	11.2	115.48	-63.9	-462.4	192.7	170.4	22.35	8.622			
4,400.0	4,360.6	4,396.3	4,363.1	12.2	11.5	115.39	-66.1	-476.4	198.1	175.1	22.96	8.629			
4,500.0	4,459.4	4,496.1	4,461.9	12.5	11.8	115.31	-68.4	-490.5	203.5	179.9	23.56	8.635			
4,600.0	4,558.2	4,596.0	4,560.8	12.8	12.1	115.23	-70.7	-504.5	208.9	184.7	24.17	8.642			
4,700.0	4,657.0	4,695.8	4,659.6	13.1	12.4	115.15	-72.9	-518.5	214.3	189.5	24.78	8.648			
4,800.0	4,755.8	4,795.7	4,758.4	13.5	12.7	115.08	-75.2	-532.6	219.7	194.3	25.39	8.653			
4,900.0	4,854.6	4,895.5	4,857.3	13.8	13.0	115.01	-77.5	-546.6	225.0	199.1	25.99	8.658			
5,000.0	4,953.5	4,995.4	4,956.1	14.1	13.3	114.95	-79.8	-560.7	230.4	203.8	26.60	8.663			
5,100.0	5,052.3	5,095.2	5,054.9	14.4	13.6	114.89	-82.0	-574.7	235.8	208.6	27.21	8.668			

CC - Min centre to center distance or convergent point, SF - min separation factor, ES - min ellipse separation

# Cathedral Energy Services

## Anticollision Report

<b>Company:</b>	EnCana Oil & Gas (USA) Inc	<b>Local Co-ordinate Reference:</b>	Well Bohrer 2F-19H-E368
<b>Project:</b>	DJ Wattenberg	<b>TVD Reference:</b>	WELL @ 5084.0ft (Original Well Elev)
<b>Reference Site:</b>	S19-T3N-R68W (Bohrer)	<b>MD Reference:</b>	WELL @ 5084.0ft (Original Well Elev)
<b>Site Error:</b>	0.0ft	<b>North Reference:</b>	True
<b>Reference Well:</b>	Bohrer 2F-19H-E368	<b>Survey Calculation Method:</b>	Minimum Curvature
<b>Well Error:</b>	0.0ft	<b>Output errors are at</b>	2.00 sigma
<b>Reference Wellbore</b>	Hz	<b>Database:</b>	USA EDM 5000 Multi Users DB
<b>Reference Design:</b>	Plan #1	<b>Offset TVD Reference:</b>	Offset Datum

Offset Design S19-T3N-R68W (Bohrer) - Bohrer 2E-19H-E368 - Hz - Plan #1													Offset Site Error: 0.0 ft	
Survey Program: 0-Geolink MWD													Offset Well Error: 0.0 ft	
Reference		Offset		Semi Major Axis			Distance							Warning
Measured Depth (ft)	Vertical Depth (ft)	Measured Depth (ft)	Vertical Depth (ft)	Reference (ft)	Offset (ft)	Highside Toolface (°)	Offset Wellbore Centre +N/-S (ft)	+E/-W (ft)	Between Centres (ft)	Between Ellipses (ft)	Total Uncertainty Axis	Separation Factor		
5,200.0	5,151.1	5,195.1	5,153.8	14.8	13.9	114.83	-84.3	-588.8	241.2	213.4	27.81	8.672		
5,300.0	5,249.9	5,294.9	5,252.6	15.1	14.2	114.77	-86.6	-602.8	246.6	218.2	28.42	8.677		
5,400.0	5,348.7	5,394.8	5,351.5	15.4	14.6	114.72	-88.8	-616.8	252.0	223.0	29.03	8.681		
5,500.0	5,447.5	5,494.7	5,450.3	15.7	14.9	114.67	-91.1	-630.9	257.4	227.8	29.64	8.685		
5,600.0	5,546.3	5,594.5	5,549.1	16.0	15.2	114.62	-93.4	-644.9	262.8	232.5	30.25	8.688		
5,700.0	5,645.1	5,694.4	5,648.0	16.4	15.5	114.57	-95.7	-659.0	268.2	237.3	30.85	8.692		
5,800.0	5,743.9	5,794.2	5,746.8	16.7	15.8	114.52	-97.9	-673.0	273.6	242.1	31.46	8.695		
5,900.0	5,842.7	5,894.1	5,845.6	17.0	16.1	114.48	-100.2	-687.1	279.0	246.9	32.07	8.698		
6,000.0	5,941.6	5,993.9	5,944.5	17.3	16.4	114.44	-102.5	-701.1	284.4	251.7	32.68	8.701		
6,100.0	6,040.4	6,093.8	6,043.3	17.6	16.7	114.39	-104.7	-715.2	289.7	256.5	33.29	8.704		
6,200.0	6,139.2	6,193.6	6,142.1	18.0	17.0	114.35	-107.0	-729.2	295.1	261.2	33.90	8.707		
6,300.0	6,238.0	6,295.2	6,242.8	18.3	17.3	114.54	-109.3	-742.3	300.4	266.0	34.45	8.720		
6,400.0	6,336.8	6,397.6	6,345.0	18.6	17.3	117.41	-111.7	-741.1	304.9	270.4	34.49	8.838		
6,500.0	6,435.6	6,491.9	6,437.7	18.9	17.1	125.46	-113.8	-723.9	310.6	276.7	33.88	9.166		
6,600.0	6,535.1	6,579.1	6,519.6	19.1	16.8	-135.78	-115.7	-694.8	320.3	287.7	32.61	9.822		
6,700.0	6,633.7	6,662.2	6,592.9	19.0	16.4	-93.19	-117.4	-655.6	333.2	302.1	31.08	10.719		
6,800.0	6,728.4	6,742.2	6,657.4	18.8	15.8	-80.20	-118.9	-608.3	347.7	318.3	29.50	11.789		
6,900.0	6,816.3	6,819.9	6,713.0	18.3	15.3	-72.68	-120.1	-554.3	362.7	334.7	27.99	12.956		
7,000.0	6,894.7	6,900.0	6,762.3	17.8	14.8	-67.34	-121.3	-491.2	376.9	350.2	26.63	14.151		
7,100.0	6,961.3	6,969.9	6,797.7	17.2	14.4	-63.71	-122.1	-431.0	389.3	363.6	25.65	15.178		
7,200.0	7,014.0	7,043.1	6,826.6	16.6	14.1	-61.06	-122.7	-363.8	399.3	374.3	25.01	15.966		
7,300.0	7,051.2	7,115.6	6,846.6	16.2	14.1	-59.34	-123.2	-294.2	406.4	381.6	24.89	16.332		
7,400.0	7,071.8	7,187.7	6,857.6	15.8	14.2	-58.45	-123.5	-223.0	410.3	385.0	25.32	16.207		
7,500.0	7,076.0	7,267.4	6,860.0	15.6	14.6	-58.30	-123.5	-143.3	411.0	384.7	26.31	15.621		
7,600.0	7,076.0	7,367.4	6,860.0	16.1	15.5	-58.30	-123.5	-43.3	411.0	383.1	27.91	14.730		
7,700.0	7,076.0	7,467.4	6,860.0	17.5	16.8	-58.30	-123.5	56.7	411.0	381.1	29.99	13.705		
7,800.0	7,076.0	7,567.4	6,860.0	19.1	18.3	-58.30	-123.5	156.7	411.0	378.5	32.49	12.650		
7,900.0	7,076.0	7,667.4	6,860.0	20.8	20.0	-58.30	-123.5	256.7	411.0	375.7	35.32	11.637		
8,000.0	7,076.0	7,767.4	6,860.0	22.6	21.8	-58.30	-123.5	356.7	411.0	372.6	38.41	10.702		
8,100.0	7,076.0	7,867.4	6,860.0	24.6	23.8	-58.30	-123.5	456.7	411.0	369.4	41.69	9.859		
8,200.0	7,076.0	7,967.4	6,860.0	26.6	25.8	-58.30	-123.5	556.7	411.0	365.9	45.13	9.108		
8,300.0	7,076.0	8,067.4	6,860.0	28.7	27.9	-58.30	-123.5	656.7	411.0	362.4	48.69	8.442		
8,400.0	7,076.0	8,167.4	6,860.0	30.8	30.1	-58.30	-123.5	756.7	411.0	358.7	52.35	7.852		
8,500.0	7,076.0	8,267.4	6,860.0	33.0	32.3	-58.30	-123.5	856.7	411.0	355.0	56.09	7.329		
8,600.0	7,076.0	8,367.4	6,860.0	35.2	34.5	-58.30	-123.5	956.7	411.0	351.2	59.89	6.863		
8,700.0	7,076.0	8,467.4	6,860.0	37.5	36.8	-58.30	-123.5	1,056.7	411.0	347.3	63.74	6.449		
8,800.0	7,076.0	8,567.4	6,860.0	39.8	39.1	-58.30	-123.5	1,156.7	411.0	343.4	67.64	6.077		
8,900.0	7,076.0	8,667.4	6,860.0	42.1	41.4	-58.30	-123.5	1,256.7	411.0	339.5	71.57	5.743		
9,000.0	7,076.0	8,767.4	6,860.0	44.4	43.8	-58.30	-123.5	1,356.7	411.0	335.5	75.53	5.442		
9,100.0	7,076.0	8,867.4	6,860.0	46.7	46.1	-58.30	-123.5	1,456.7	411.0	331.5	79.52	5.169		
9,200.0	7,076.0	8,967.4	6,860.0	49.0	48.5	-58.30	-123.5	1,556.7	411.0	327.5	83.53	4.921		
9,300.0	7,076.0	9,067.4	6,860.0	51.4	50.8	-58.30	-123.5	1,656.7	411.0	323.5	87.57	4.694		
9,400.0	7,076.0	9,167.4	6,860.0	53.8	53.2	-58.30	-123.5	1,756.7	411.0	319.4	91.61	4.487		
9,500.0	7,076.0	9,267.4	6,860.0	56.1	55.6	-58.30	-123.5	1,856.7	411.0	315.4	95.67	4.296		
9,600.0	7,076.0	9,367.4	6,860.0	58.5	58.0	-58.30	-123.5	1,956.7	411.0	311.3	99.75	4.121		
9,700.0	7,076.0	9,467.4	6,860.0	60.9	60.4	-58.30	-123.5	2,056.7	411.0	307.2	103.83	3.959		
9,800.0	7,076.0	9,567.4	6,860.0	63.3	62.8	-58.30	-123.5	2,156.7	411.0	303.1	107.93	3.808		
9,900.0	7,076.0	9,667.4	6,860.0	65.7	65.2	-58.30	-123.5	2,256.7	411.0	299.0	112.03	3.669		
10,000.0	7,076.0	9,767.4	6,860.0	68.1	67.7	-58.30	-123.5	2,356.7	411.0	294.9	116.15	3.539		
10,100.0	7,076.0	9,867.4	6,860.0	70.5	70.1	-58.30	-123.5	2,456.7	411.0	290.8	120.27	3.418		
10,200.0	7,076.0	9,967.4	6,860.0	73.0	72.5	-58.30	-123.5	2,556.7	411.0	286.6	124.39	3.304		
10,300.0	7,076.0	10,067.4	6,860.0	75.4	74.9	-58.30	-123.5	2,656.7	411.0	282.5	128.53	3.198		

CC - Min centre to center distance or convergent point, SF - min separation factor, ES - min ellipse separation

# Cathedral Energy Services

## Anticollision Report

<b>Company:</b>	EnCana Oil & Gas (USA) Inc	<b>Local Co-ordinate Reference:</b>	Well Bohrer 2F-19H-E368
<b>Project:</b>	DJ Wattenberg	<b>TVD Reference:</b>	WELL @ 5084.0ft (Original Well Elev)
<b>Reference Site:</b>	S19-T3N-R68W (Bohrer)	<b>MD Reference:</b>	WELL @ 5084.0ft (Original Well Elev)
<b>Site Error:</b>	0.0ft	<b>North Reference:</b>	True
<b>Reference Well:</b>	Bohrer 2F-19H-E368	<b>Survey Calculation Method:</b>	Minimum Curvature
<b>Well Error:</b>	0.0ft	<b>Output errors are at</b>	2.00 sigma
<b>Reference Wellbore</b>	Hz	<b>Database:</b>	USA EDM 5000 Multi Users DB
<b>Reference Design:</b>	Plan #1	<b>Offset TVD Reference:</b>	Offset Datum

Offset Design													S19-T3N-R68W (Bohrer) - Bohrer 2E-19H-E368 - Hz - Plan #1		Offset Site Error:		0.0 ft
Survey Program:													0-Geolink MWD		Offset Well Error:		0.0 ft
Reference				Offset		Semi Major Axis			Distance								
Measured Depth	Vertical Depth	Measured Depth	Vertical Depth	Reference	Offset	Highside Toolface	Offset Wellbore Centre	Between Centres	Between Ellipses	Total Uncertainty	Separation	Warning					
(ft)	(ft)	(ft)	(ft)	(ft)	(ft)	(°)	+N/-S (ft)	+E/-W (ft)	(ft)	(ft)	Axis	Factor					
10,400.0	7,076.0	10,167.4	6,860.0	77.8	77.4	-58.30	-123.5	2,756.7	411.0	278.4	132.66	3.098					
10,500.0	7,076.0	10,267.4	6,860.0	80.2	79.8	-58.30	-123.5	2,856.7	411.0	274.2	136.80	3.005					
10,600.0	7,076.0	10,367.4	6,860.0	82.7	82.2	-58.30	-123.5	2,956.7	411.0	270.1	140.95	2.916					
10,700.0	7,076.0	10,467.4	6,860.0	85.1	84.7	-58.30	-123.5	3,056.7	411.0	265.9	145.10	2.833					
10,800.0	7,076.0	10,567.4	6,860.0	87.5	87.1	-58.30	-123.5	3,156.7	411.0	261.8	149.25	2.754					
10,900.0	7,076.0	10,667.4	6,860.0	90.0	89.6	-58.30	-123.5	3,256.7	411.0	257.6	153.41	2.679					
11,000.0	7,076.0	10,767.4	6,860.0	92.4	92.0	-58.30	-123.5	3,356.7	411.0	253.5	157.57	2.609					
11,100.0	7,076.0	10,867.4	6,860.0	94.8	94.4	-58.30	-123.5	3,456.7	411.0	249.3	161.74	2.541					
11,200.0	7,076.0	10,967.4	6,860.0	97.3	96.9	-58.30	-123.5	3,556.7	411.0	245.1	165.90	2.478					
11,300.0	7,076.0	11,067.4	6,860.0	99.7	99.3	-58.30	-123.5	3,656.7	411.0	241.0	170.07	2.417					
11,400.0	7,076.0	11,167.4	6,860.0	102.2	101.8	-58.30	-123.5	3,756.7	411.0	236.8	174.24	2.359					
11,500.0	7,076.0	11,267.4	6,860.0	104.6	104.2	-58.30	-123.5	3,856.7	411.0	232.6	178.41	2.304					
11,600.0	7,076.0	11,367.4	6,860.0	107.1	106.7	-58.30	-123.5	3,956.7	411.0	228.5	182.59	2.251					
11,684.5	7,076.0	11,451.9	6,860.0	109.1	108.8	-58.30	-123.5	4,041.2	411.0	224.9	186.12	2.209 SF					

# Cathedral Energy Services

## Anticollision Report

<b>Company:</b>	EnCana Oil & Gas (USA) Inc	<b>Local Co-ordinate Reference:</b>	Well Bohrer 2F-19H-E368
<b>Project:</b>	DJ Wattenberg	<b>TVD Reference:</b>	WELL @ 5084.0ft (Original Well Elev)
<b>Reference Site:</b>	S19-T3N-R68W (Bohrer)	<b>MD Reference:</b>	WELL @ 5084.0ft (Original Well Elev)
<b>Site Error:</b>	0.0ft	<b>North Reference:</b>	True
<b>Reference Well:</b>	Bohrer 2F-19H-E368	<b>Survey Calculation Method:</b>	Minimum Curvature
<b>Well Error:</b>	0.0ft	<b>Output errors are at</b>	2.00 sigma
<b>Reference Wellbore</b>	Hz	<b>Database:</b>	USA EDM 5000 Multi Users DB
<b>Reference Design:</b>	Plan #1	<b>Offset TVD Reference:</b>	Offset Datum

Offset Design S19-T3N-R68W (Bohrer) - Bohrer 2G-19H-E368 - Hz - Plan #1													Offset Site Error:	0.0 ft
Survey Program: O-Geolink MWD													Offset Well Error:	0.0 ft
Reference		Offset		Semi Major Axis			Distance				Total Uncertainty Axis	Separation Factor	Warning	
Measured Depth (ft)	Vertical Depth (ft)	Measured Depth (ft)	Vertical Depth (ft)	Reference (ft)	Offset (ft)	Highside Toolface (°)	Offset Wellbore Centre +N/-S (ft)	+E/-W (ft)	Between Centres (ft)	Between Ellipses (ft)				
0.0	0.0	0.0	0.0	0.0	0.0	-180.00	-7.3	0.0	7.3					
100.0	100.0	100.0	100.0	0.1	0.1	-180.00	-7.3	0.0	7.3	7.0	0.26	27.829		
200.0	200.0	200.0	200.0	0.3	0.3	-180.00	-7.3	0.0	7.3	6.7	0.61	11.927		
300.0	300.0	300.0	300.0	0.5	0.5	-180.00	-7.3	0.0	7.3	6.3	0.96	7.590		
400.0	400.0	400.0	400.0	0.7	0.7	-180.00	-7.3	0.0	7.3	6.0	1.31	5.566 CC, ES		
500.0	500.0	499.9	499.9	0.8	0.8	-175.51	-7.9	-0.6	7.9	6.3	1.66	4.777		
600.0	600.0	599.8	599.7	1.0	1.0	-49.78	-9.7	-2.5	9.5	7.5	2.01	4.711		
700.0	700.0	699.6	699.5	1.2	1.2	-47.28	-12.8	-5.6	11.4	9.0	2.36	4.809		
800.0	799.9	799.4	799.1	1.4	1.4	-47.01	-17.1	-9.9	13.5	10.8	2.72	4.980		
900.0	899.7	899.1	898.5	1.6	1.6	-48.06	-22.5	-15.5	16.0	12.9	3.09	5.188		
1,000.0	999.4	998.8	997.8	1.8	1.8	-49.85	-29.2	-22.3	18.8	15.3	3.47	5.412		
1,100.0	1,098.9	1,098.5	1,096.8	2.0	2.1	-52.04	-37.2	-30.3	21.9	18.0	3.88	5.640		
1,200.0	1,198.3	1,198.1	1,195.5	2.2	2.3	-54.38	-46.3	-39.5	25.4	21.0	4.33	5.862		
1,300.0	1,297.4	1,297.7	1,294.0	2.5	2.6	-56.74	-56.6	-50.0	29.2	24.4	4.81	6.069		
1,400.0	1,396.3	1,397.2	1,392.2	2.8	2.9	-59.00	-68.1	-61.6	33.4	28.1	5.33	6.261		
1,500.0	1,495.1	1,496.6	1,489.9	3.1	3.3	-59.74	-80.8	-74.5	38.5	32.7	5.87	6.566		
1,600.0	1,593.9	1,596.4	1,587.8	3.3	3.6	-59.27	-94.3	-88.2	44.5	38.1	6.40	6.956		
1,700.0	1,692.7	1,696.2	1,685.7	3.6	4.0	-58.88	-107.8	-101.9	50.5	43.5	6.93	7.282		
1,800.0	1,791.5	1,796.0	1,783.7	4.0	4.3	-58.58	-121.3	-115.6	56.5	49.0	7.47	7.557		
1,900.0	1,890.4	1,895.8	1,881.6	4.3	4.7	-58.34	-134.9	-129.3	62.4	54.4	8.01	7.791		
2,000.0	1,989.2	1,995.6	1,979.6	4.6	5.1	-58.14	-148.4	-143.1	68.4	59.9	8.56	7.992		
2,100.0	2,088.0	2,095.5	2,077.5	4.9	5.4	-57.97	-162.0	-156.8	74.4	65.3	9.11	8.167		
2,200.0	2,186.8	2,195.3	2,175.5	5.2	5.8	-57.83	-175.5	-170.5	80.4	70.7	9.66	8.320		
2,300.0	2,285.6	2,295.1	2,273.4	5.5	6.2	-57.70	-189.0	-184.2	86.4	76.1	10.21	8.455		
2,400.0	2,384.4	2,394.9	2,371.3	5.8	6.5	-57.59	-202.6	-197.9	92.3	81.6	10.77	8.575		
2,500.0	2,483.2	2,494.7	2,469.3	6.1	6.9	-57.50	-216.1	-211.7	98.3	87.0	11.33	8.682		
2,600.0	2,582.0	2,594.6	2,567.2	6.4	7.3	-57.42	-229.6	-225.4	104.3	92.4	11.88	8.779		
2,700.0	2,680.8	2,694.4	2,665.2	6.8	7.7	-57.34	-243.2	-239.1	110.3	97.9	12.44	8.866		
2,800.0	2,779.6	2,794.2	2,763.1	7.1	8.0	-57.27	-256.7	-252.8	116.3	103.3	13.00	8.945		
2,900.0	2,878.5	2,894.0	2,861.1	7.4	8.4	-57.21	-270.2	-266.5	122.3	108.7	13.56	9.017		
3,000.0	2,977.3	2,993.9	2,959.0	7.7	8.8	-57.16	-283.8	-280.3	128.3	114.1	14.12	9.082		
3,100.0	3,076.1	3,093.7	3,056.9	8.0	9.2	-57.11	-297.3	-294.0	134.2	119.6	14.68	9.143		
3,200.0	3,174.9	3,193.5	3,154.9	8.3	9.5	-57.06	-310.9	-307.7	140.2	125.0	15.24	9.198		
3,300.0	3,273.7	3,293.3	3,252.8	8.7	9.9	-57.02	-324.4	-321.4	146.2	130.4	15.81	9.250		
3,400.0	3,372.5	3,393.1	3,350.8	9.0	10.3	-56.98	-337.9	-335.1	152.2	135.8	16.37	9.297		
3,500.0	3,471.3	3,493.0	3,448.7	9.3	10.7	-56.95	-351.5	-348.9	158.2	141.2	16.93	9.342		
3,600.0	3,570.1	3,592.8	3,546.7	9.6	11.1	-56.91	-365.0	-362.6	164.2	146.7	17.50	9.383		
3,700.0	3,668.9	3,692.6	3,644.6	9.9	11.4	-56.88	-378.5	-376.3	170.1	152.1	18.06	9.421		
3,800.0	3,767.7	3,792.4	3,742.5	10.3	11.8	-56.86	-392.1	-390.0	176.1	157.5	18.62	9.457		
3,900.0	3,866.6	3,892.2	3,840.5	10.6	12.2	-56.83	-405.6	-403.7	182.1	162.9	19.19	9.491		
4,000.0	3,965.4	3,992.1	3,938.4	10.9	12.6	-56.80	-419.2	-417.5	188.1	168.4	19.75	9.523		
4,100.0	4,064.2	4,091.9	4,036.4	11.2	12.9	-56.78	-432.7	-431.2	194.1	173.8	20.32	9.553		
4,200.0	4,163.0	4,191.7	4,134.3	11.5	13.3	-56.76	-446.2	-444.9	200.1	179.2	20.88	9.581		
4,300.0	4,261.8	4,291.5	4,232.2	11.9	13.7	-56.74	-459.8	-458.6	206.1	184.6	21.45	9.607		
4,400.0	4,360.6	4,391.3	4,330.2	12.2	14.1	-56.72	-473.3	-472.3	212.0	190.0	22.01	9.633		
4,500.0	4,459.4	4,491.2	4,428.1	12.5	14.5	-56.70	-486.8	-486.1	218.0	195.5	22.58	9.656		
4,600.0	4,558.2	4,591.0	4,526.1	12.8	14.8	-56.68	-500.4	-499.8	224.0	200.9	23.14	9.679		
4,700.0	4,657.0	4,690.8	4,624.0	13.1	15.2	-56.66	-513.9	-513.5	230.0	206.3	23.71	9.701		
4,800.0	4,755.8	4,790.6	4,722.0	13.5	15.6	-56.65	-527.4	-527.2	236.0	211.7	24.28	9.721		
4,900.0	4,854.6	4,890.4	4,819.9	13.8	16.0	-56.63	-541.0	-540.9	242.0	217.1	24.84	9.740		
5,000.0	4,953.5	4,990.3	4,917.8	14.1	16.4	-56.62	-554.5	-554.7	248.0	222.6	25.41	9.759		
5,100.0	5,052.3	5,090.1	5,015.8	14.4	16.7	-56.61	-568.1	-568.4	253.9	228.0	25.97	9.777		

CC - Min centre to center distance or convergent point, SF - min separation factor, ES - min ellipse separation

# Cathedral Energy Services

## Anticollision Report

<b>Company:</b>	EnCana Oil & Gas (USA) Inc	<b>Local Co-ordinate Reference:</b>	Well Bohrer 2F-19H-E368
<b>Project:</b>	DJ Wattenberg	<b>TVD Reference:</b>	WELL @ 5084.0ft (Original Well Elev)
<b>Reference Site:</b>	S19-T3N-R68W (Bohrer)	<b>MD Reference:</b>	WELL @ 5084.0ft (Original Well Elev)
<b>Site Error:</b>	0.0ft	<b>North Reference:</b>	True
<b>Reference Well:</b>	Bohrer 2F-19H-E368	<b>Survey Calculation Method:</b>	Minimum Curvature
<b>Well Error:</b>	0.0ft	<b>Output errors are at</b>	2.00 sigma
<b>Reference Wellbore</b>	Hz	<b>Database:</b>	USA EDM 5000 Multi Users DB
<b>Reference Design:</b>	Plan #1	<b>Offset TVD Reference:</b>	Offset Datum

Offset Design S19-T3N-R68W (Bohrer) - Bohrer 2G-19H-E368 - Hz - Plan #1												Offset Site Error: 0.0 ft	
Survey Program: 0-Geolink MWD												Offset Well Error: 0.0 ft	
Reference		Offset		Semi Major Axis			Distance					Warning	
Measured Depth (ft)	Vertical Depth (ft)	Measured Depth (ft)	Vertical Depth (ft)	Reference (ft)	Offset (ft)	Highside Toolface (°)	Offset Wellbore Centre +N/-S (ft)	+E/-W (ft)	Between Centres (ft)	Between Ellipses (ft)	Total Uncertainty Axis		Separation Factor
5,200.0	5,151.1	5,189.9	5,113.7	14.8	17.1	-56.59	-581.6	-582.1	259.9	233.4	26.54	9.794	
5,300.0	5,249.9	5,289.7	5,211.7	15.1	17.5	-56.58	-595.1	-595.8	265.9	238.8	27.11	9.810	
5,400.0	5,348.7	5,389.5	5,309.6	15.4	17.9	-56.57	-608.7	-609.5	271.9	244.2	27.67	9.825	
5,500.0	5,447.5	5,489.4	5,407.6	15.7	18.3	-56.56	-622.2	-623.3	277.9	249.6	28.24	9.840	
5,600.0	5,546.3	5,589.2	5,505.5	16.0	18.6	-56.55	-635.7	-637.0	283.9	255.1	28.81	9.854	
5,700.0	5,645.1	5,689.0	5,603.4	16.4	19.0	-56.54	-649.3	-650.7	289.9	260.5	29.37	9.868	
5,800.0	5,743.9	5,788.8	5,701.4	16.7	19.4	-56.53	-662.8	-664.4	295.8	265.9	29.94	9.881	
5,900.0	5,842.7	5,888.7	5,799.3	17.0	19.8	-56.52	-676.3	-678.1	301.8	271.3	30.51	9.894	
6,000.0	5,941.6	5,988.5	5,897.3	17.3	20.2	-56.51	-689.9	-691.9	307.8	276.7	31.07	9.906	
6,100.0	6,040.4	6,088.3	5,995.2	17.6	20.6	-56.50	-703.4	-705.6	313.8	282.2	31.64	9.917	
6,200.0	6,139.2	6,188.1	6,093.1	18.0	20.9	-56.49	-717.0	-719.3	319.8	287.6	32.21	9.929	
6,300.0	6,238.0	6,287.9	6,191.1	18.3	21.3	-56.48	-730.5	-733.0	325.8	293.0	32.78	9.939	
6,400.0	6,336.8	6,389.7	6,291.4	18.6	21.6	-57.39	-744.4	-741.7	331.5	298.0	33.50	9.897	
6,500.0	6,435.6	6,487.6	6,387.9	18.9	21.7	-58.55	-757.7	-733.6	337.4	302.6	34.75	9.710	
6,600.0	6,535.1	6,579.7	6,476.2	19.1	21.6	28.44	-769.9	-710.9	345.3	309.4	35.90	9.618	
6,700.0	6,633.7	6,668.2	6,556.7	19.0	21.5	60.34	-781.0	-675.9	355.0	318.6	36.31	9.775	
6,800.0	6,728.4	6,753.8	6,628.5	18.8	21.2	63.94	-790.9	-630.5	365.6	329.7	35.93	10.175	
6,900.0	6,816.3	6,837.0	6,691.1	18.3	20.9	63.49	-799.6	-576.5	376.4	341.6	34.79	10.820	
7,000.0	6,894.7	6,918.4	6,744.3	17.8	20.5	62.15	-807.0	-515.5	386.6	353.6	33.04	11.702	
7,100.0	6,961.3	7,000.0	6,788.5	17.2	20.1	60.72	-813.1	-447.2	395.6	364.6	30.93	12.788	
7,200.0	7,014.0	7,077.1	6,821.0	16.6	19.8	59.57	-817.6	-377.5	402.8	373.9	28.89	13.941	
7,300.0	7,051.2	7,150.0	6,843.0	16.2	19.6	58.78	-820.6	-308.1	407.9	380.6	27.33	14.925	
7,400.0	7,071.8	7,232.9	6,857.1	15.8	19.4	58.34	-822.5	-226.5	410.6	383.9	26.70	15.380	
7,500.0	7,076.0	7,316.2	6,860.0	15.6	19.3	58.30	-822.9	-143.3	411.0	383.7	27.32	15.048	
7,600.0	7,076.0	7,416.2	6,860.0	16.1	19.4	58.30	-822.9	-43.3	411.0	382.2	28.84	14.252	
7,700.0	7,076.0	7,516.2	6,860.0	17.5	20.0	58.30	-822.9	56.7	411.0	380.2	30.87	13.314	
7,800.0	7,076.0	7,616.2	6,860.0	19.1	20.9	58.30	-822.9	156.7	411.0	377.7	33.32	12.338	
7,900.0	7,076.0	7,716.2	6,860.0	20.8	22.3	58.30	-822.9	256.7	411.0	375.0	36.09	11.390	
8,000.0	7,076.0	7,816.2	6,860.0	22.6	23.9	58.30	-822.9	356.7	411.0	371.9	39.12	10.508	
8,100.0	7,076.0	7,916.2	6,860.0	24.6	25.8	58.30	-822.9	456.7	411.0	368.7	42.35	9.705	
8,200.0	7,076.0	8,016.2	6,860.0	26.6	27.7	58.30	-822.9	556.7	411.0	365.3	45.75	8.985	
8,300.0	7,076.0	8,116.2	6,860.0	28.7	29.7	58.30	-822.9	656.7	411.0	361.8	49.27	8.343	
8,400.0	7,076.0	8,216.2	6,860.0	30.8	31.8	58.30	-822.9	756.7	411.0	358.1	52.89	7.771	
8,500.0	7,076.0	8,316.2	6,860.0	33.0	33.9	58.30	-822.9	856.7	411.0	354.4	56.60	7.263	
8,600.0	7,076.0	8,416.2	6,860.0	35.2	36.1	58.30	-822.9	956.7	411.0	350.7	60.37	6.809	
8,700.0	7,076.0	8,516.2	6,860.0	37.5	38.3	58.30	-822.9	1,056.7	411.0	346.8	64.20	6.403	
8,800.0	7,076.0	8,616.2	6,860.0	39.8	40.5	58.30	-822.9	1,156.7	411.0	343.0	68.07	6.038	
8,900.0	7,076.0	8,716.2	6,860.0	42.1	42.8	58.30	-822.9	1,256.7	411.0	339.1	71.98	5.710	
9,000.0	7,076.0	8,816.2	6,860.0	44.4	45.0	58.30	-822.9	1,356.7	411.0	335.1	75.93	5.414	
9,100.0	7,076.0	8,916.2	6,860.0	46.7	47.3	58.30	-822.9	1,456.7	411.0	331.1	79.90	5.144	
9,200.0	7,076.0	9,016.2	6,860.0	49.0	49.7	58.30	-822.9	1,556.7	411.0	327.1	83.90	4.899	
9,300.0	7,076.0	9,116.2	6,860.0	51.4	52.0	58.30	-822.9	1,656.7	411.0	323.1	87.91	4.676	
9,400.0	7,076.0	9,216.2	6,860.0	53.8	54.3	58.30	-822.9	1,756.7	411.0	319.1	91.95	4.470	
9,500.0	7,076.0	9,316.2	6,860.0	56.1	56.7	58.30	-822.9	1,856.7	411.0	315.0	96.00	4.282	
9,600.0	7,076.0	9,416.2	6,860.0	58.5	59.0	58.30	-822.9	1,956.7	411.0	311.0	100.06	4.108	
9,700.0	7,076.0	9,516.2	6,860.0	60.9	61.4	58.30	-822.9	2,056.7	411.0	306.9	104.13	3.947	
9,800.0	7,076.0	9,616.2	6,860.0	63.3	63.8	58.30	-822.9	2,156.7	411.0	302.8	108.22	3.798	
9,900.0	7,076.0	9,716.2	6,860.0	65.7	66.2	58.30	-822.9	2,256.7	411.0	298.7	112.32	3.660	
10,000.0	7,076.0	9,816.2	6,860.0	68.1	68.6	58.30	-822.9	2,356.7	411.0	294.6	116.42	3.531	
10,100.0	7,076.0	9,916.2	6,860.0	70.5	71.0	58.30	-822.9	2,456.7	411.0	290.5	120.53	3.410	
10,200.0	7,076.0	10,016.2	6,860.0	73.0	73.4	58.30	-822.9	2,556.7	411.0	286.4	124.65	3.298	
10,300.0	7,076.0	10,116.2	6,860.0	75.4	75.8	58.30	-822.9	2,656.7	411.0	282.3	128.78	3.192	

CC - Min centre to center distance or convergent point, SF - min separation factor, ES - min ellipse separation

# Cathedral Energy Services

## Anticollision Report

<b>Company:</b>	EnCana Oil & Gas (USA) Inc	<b>Local Co-ordinate Reference:</b>	Well Bohrer 2F-19H-E368
<b>Project:</b>	DJ Wattenberg	<b>TVD Reference:</b>	WELL @ 5084.0ft (Original Well Elev)
<b>Reference Site:</b>	S19-T3N-R68W (Bohrer)	<b>MD Reference:</b>	WELL @ 5084.0ft (Original Well Elev)
<b>Site Error:</b>	0.0ft	<b>North Reference:</b>	True
<b>Reference Well:</b>	Bohrer 2F-19H-E368	<b>Survey Calculation Method:</b>	Minimum Curvature
<b>Well Error:</b>	0.0ft	<b>Output errors are at</b>	2.00 sigma
<b>Reference Wellbore</b>	Hz	<b>Database:</b>	USA EDM 5000 Multi Users DB
<b>Reference Design:</b>	Plan #1	<b>Offset TVD Reference:</b>	Offset Datum

Offset Design S19-T3N-R68W (Bohrer) - Bohrer 2G-19H-E368 - Hz - Plan #1													Offset Site Error:	0.0 ft
Survey Program: 0-Geolink MWD													Offset Well Error:	0.0 ft
Reference		Offset		Semi Major Axis		Distance		Total		Separation		Warning		
Measured Depth (ft)	Vertical Depth (ft)	Measured Depth (ft)	Vertical Depth (ft)	Reference (ft)	Offset (ft)	Highside Toolface (°)	Offset Wellbore Centre +N/-S (ft)	+E/-W (ft)	Between Centres (ft)	Between Ellipses (ft)	Uncertainty Axis			
10,400.0	7,076.0	10,216.2	6,860.0	77.8	78.2	58.30	-822.9	2,756.7	411.0	278.1	132.91	3.093		
10,500.0	7,076.0	10,316.2	6,860.0	80.2	80.6	58.30	-822.9	2,856.7	411.0	274.0	137.04	2.999		
10,600.0	7,076.0	10,416.2	6,860.0	82.7	83.0	58.30	-822.9	2,956.7	411.0	269.9	141.19	2.911		
10,700.0	7,076.0	10,516.2	6,860.0	85.1	85.4	58.30	-822.9	3,056.7	411.0	265.7	145.33	2.828		
10,800.0	7,076.0	10,616.2	6,860.0	87.5	87.8	58.30	-822.9	3,156.7	411.0	261.6	149.48	2.750		
10,900.0	7,076.0	10,716.2	6,860.0	90.0	90.3	58.30	-822.9	3,256.7	411.0	257.4	153.63	2.675		
11,000.0	7,076.0	10,816.2	6,860.0	92.4	92.7	58.30	-822.9	3,356.7	411.0	253.3	157.79	2.605		
11,100.0	7,076.0	10,916.2	6,860.0	94.8	95.1	58.30	-822.9	3,456.7	411.0	249.1	161.95	2.538		
11,200.0	7,076.0	11,016.2	6,860.0	97.3	97.6	58.30	-822.9	3,556.7	411.0	244.9	166.11	2.475		
11,300.0	7,076.0	11,116.2	6,860.0	99.7	100.0	58.30	-822.9	3,656.7	411.0	240.8	170.27	2.414		
11,400.0	7,076.0	11,216.2	6,860.0	102.2	102.4	58.30	-822.9	3,756.7	411.0	236.6	174.44	2.356		
11,500.0	7,076.0	11,316.2	6,860.0	104.6	104.9	58.30	-822.9	3,856.7	411.0	232.4	178.61	2.301		
11,600.0	7,076.0	11,416.2	6,860.0	107.1	107.3	58.30	-822.9	3,956.7	411.0	228.3	182.78	2.249		
11,684.5	7,076.0	11,500.7	6,860.0	109.1	109.4	58.30	-822.9	4,041.2	411.0	224.7	186.31	2.206 SF		

# Cathedral Energy Services

## Anticollision Report

<b>Company:</b>	EnCana Oil & Gas (USA) Inc	<b>Local Co-ordinate Reference:</b>	Well Bohrer 2F-19H-E368
<b>Project:</b>	DJ Wattenberg	<b>TVD Reference:</b>	WELL @ 5084.0ft (Original Well Elev)
<b>Reference Site:</b>	S19-T3N-R68W (Bohrer)	<b>MD Reference:</b>	WELL @ 5084.0ft (Original Well Elev)
<b>Site Error:</b>	0.0ft	<b>North Reference:</b>	True
<b>Reference Well:</b>	Bohrer 2F-19H-E368	<b>Survey Calculation Method:</b>	Minimum Curvature
<b>Well Error:</b>	0.0ft	<b>Output errors are at</b>	2.00 sigma
<b>Reference Wellbore</b>	Hz	<b>Database:</b>	USA EDM 5000 Multi Users DB
<b>Reference Design:</b>	Plan #1	<b>Offset TVD Reference:</b>	Offset Datum

Offset Design S19-T3N-R68W (Bohrer) - Bohrer 2H-19H-E368 - Hz - Plan #1													Offset Site Error: 0.0 ft	
Survey Program: 0-Geolink MWD													Offset Well Error: 0.0 ft	
Reference		Offset		Semi Major Axis			Distance							Warning
Measured Depth	Vertical Depth	Measured Depth	Vertical Depth	Reference	Offset	Highside Toolface	Offset Wellbore Centre		Between Centres	Between Ellipses	Total Uncertainty Axis	Separation Factor		
(ft)	(ft)	(ft)	(ft)	(ft)	(ft)	(°)	+N/-S (ft)	+E/-W (ft)	(ft)	(ft)				
0.0	0.0	0.0	0.0	0.0	0.0	-180.00	-18.2	0.0	18.2					
100.0	100.0	99.0	99.0	0.1	0.1	-180.00	-18.2	0.0	18.2	18.0	0.26	69.923		
200.0	200.0	199.0	199.0	0.3	0.3	-180.00	-18.2	0.0	18.2	17.6	0.61	29.903		
300.0	300.0	299.0	299.0	0.5	0.5	-180.00	-18.2	0.0	18.2	17.3	0.96	19.009	CC, ES	
400.0	400.0	398.7	398.7	0.7	0.7	-178.49	-18.9	-0.5	18.9	17.6	1.31	14.465		
500.0	500.0	498.4	498.4	0.8	0.8	-174.54	-21.0	-2.0	21.1	19.4	1.66	12.714		
600.0	600.0	598.0	597.9	1.0	1.0	-51.36	-24.5	-4.5	24.4	22.4	2.01	12.151		
700.0	700.0	697.5	697.2	1.2	1.2	-49.93	-29.4	-8.1	28.2	25.8	2.36	11.936		
800.0	799.9	796.9	796.3	1.4	1.4	-49.88	-35.7	-12.6	32.4	29.7	2.72	11.916	SF	
900.0	899.7	896.3	895.2	1.6	1.6	-50.74	-43.4	-18.1	37.1	34.0	3.09	12.005		
1,000.0	999.4	995.5	993.8	1.8	1.9	-52.18	-52.4	-24.6	42.3	38.8	3.48	12.153		
1,100.0	1,098.9	1,094.7	1,092.1	2.0	2.2	-53.97	-62.9	-32.1	47.9	44.0	3.89	12.327		
1,200.0	1,198.3	1,193.7	1,190.1	2.2	2.4	-55.93	-74.7	-40.6	54.1	49.8	4.33	12.502		
1,300.0	1,297.4	1,292.6	1,287.7	2.5	2.8	-57.97	-87.8	-50.1	60.9	56.0	4.81	12.664		
1,400.0	1,396.3	1,391.4	1,384.8	2.8	3.1	-60.00	-102.3	-60.5	68.2	62.9	5.33	12.806		
1,500.0	1,495.1	1,490.1	1,481.5	3.1	3.5	-61.31	-118.2	-71.9	76.7	70.8	5.87	13.071		
1,600.0	1,593.9	1,588.5	1,577.6	3.3	3.9	-61.67	-135.3	-84.3	86.6	80.1	6.41	13.498		
1,700.0	1,692.7	1,687.7	1,674.4	3.6	4.3	-61.57	-153.4	-97.3	97.3	90.3	6.96	13.976		
1,800.0	1,791.5	1,787.2	1,771.2	4.0	4.7	-61.50	-171.6	-110.3	108.0	100.4	7.51	14.374		
1,900.0	1,890.4	1,886.6	1,868.1	4.3	5.1	-61.43	-189.7	-123.4	118.7	110.6	8.07	14.709		
2,000.0	1,989.2	1,986.0	1,965.0	4.6	5.5	-61.38	-207.9	-136.5	129.4	120.7	8.63	14.995		
2,100.0	2,088.0	2,085.4	2,061.9	4.9	5.9	-61.34	-226.0	-149.5	140.1	130.9	9.19	15.240		
2,200.0	2,186.8	2,184.9	2,158.8	5.2	6.3	-61.30	-244.2	-162.6	150.8	141.0	9.76	15.453		
2,300.0	2,285.6	2,284.3	2,255.6	5.5	6.7	-61.27	-262.3	-175.6	161.5	151.2	10.32	15.639		
2,400.0	2,384.4	2,383.7	2,352.5	5.8	7.2	-61.24	-280.5	-188.7	172.2	161.3	10.89	15.804		
2,500.0	2,483.2	2,483.1	2,449.4	6.1	7.6	-61.21	-298.6	-201.8	182.9	171.4	11.47	15.950		
2,600.0	2,582.0	2,582.6	2,546.3	6.4	8.0	-61.19	-316.8	-214.8	193.6	181.5	12.04	16.080		
2,700.0	2,680.8	2,682.0	2,643.2	6.8	8.4	-61.17	-334.9	-227.9	204.3	191.7	12.61	16.197		
2,800.0	2,779.6	2,781.4	2,740.0	7.1	8.9	-61.15	-353.1	-240.9	215.0	201.8	13.19	16.303		
2,900.0	2,878.5	2,880.8	2,836.9	7.4	9.3	-61.13	-371.2	-254.0	225.7	211.9	13.76	16.398		
3,000.0	2,977.3	2,980.3	2,933.8	7.7	9.7	-61.12	-389.4	-267.1	236.4	222.1	14.34	16.486		
3,100.0	3,076.1	3,079.7	3,030.7	8.0	10.1	-61.10	-407.5	-280.1	247.1	232.2	14.92	16.565		
3,200.0	3,174.9	3,179.1	3,127.6	8.3	10.6	-61.09	-425.7	-293.2	257.8	242.3	15.49	16.639		
3,300.0	3,273.7	3,278.5	3,224.4	8.7	11.0	-61.08	-443.8	-306.2	268.5	252.4	16.07	16.706		
3,400.0	3,372.5	3,378.0	3,321.3	9.0	11.4	-61.07	-462.0	-319.3	279.2	262.6	16.65	16.768		
3,500.0	3,471.3	3,477.4	3,418.2	9.3	11.8	-61.06	-480.1	-332.3	289.9	272.7	17.23	16.826		
3,600.0	3,570.1	3,576.8	3,515.1	9.6	12.3	-61.05	-498.3	-345.4	300.6	282.8	17.81	16.879		
3,700.0	3,668.9	3,676.3	3,611.9	9.9	12.7	-61.04	-516.4	-358.5	311.3	292.9	18.39	16.929		
3,800.0	3,767.7	3,775.7	3,708.8	10.3	13.1	-61.03	-534.6	-371.5	322.0	303.1	18.97	16.976		
3,900.0	3,866.6	3,875.1	3,805.7	10.6	13.6	-61.03	-552.7	-384.6	332.7	313.2	19.55	17.019		
4,000.0	3,965.4	3,974.5	3,902.6	10.9	14.0	-61.02	-570.9	-397.6	343.4	323.3	20.13	17.060		
4,100.0	4,064.2	4,074.0	3,999.5	11.2	14.4	-61.01	-589.0	-410.7	354.2	333.4	20.71	17.098		
4,200.0	4,163.0	4,173.4	4,096.3	11.5	14.8	-61.01	-607.2	-423.8	364.9	343.6	21.29	17.134		
4,300.0	4,261.8	4,272.8	4,193.2	11.9	15.3	-61.00	-625.3	-436.8	375.6	353.7	21.88	17.168		
4,400.0	4,360.6	4,372.2	4,290.1	12.2	15.7	-60.99	-643.5	-449.9	386.3	363.8	22.46	17.200		
4,500.0	4,459.4	4,471.7	4,387.0	12.5	16.1	-60.99	-661.6	-462.9	397.0	373.9	23.04	17.230		
4,600.0	4,558.2	4,571.1	4,483.9	12.8	16.6	-60.98	-679.8	-476.0	407.7	384.1	23.62	17.259		
4,700.0	4,657.0	4,670.5	4,580.7	13.1	17.0	-60.98	-697.9	-489.0	418.4	394.2	24.20	17.286		
4,800.0	4,755.8	4,769.9	4,677.6	13.5	17.4	-60.97	-716.1	-502.1	429.1	404.3	24.79	17.312		
4,900.0	4,854.6	4,869.4	4,774.5	13.8	17.8	-60.97	-734.2	-515.2	439.8	414.4	25.37	17.337		
5,000.0	4,953.5	4,968.8	4,871.4	14.1	18.3	-60.97	-752.4	-528.2	450.5	424.5	25.95	17.360		
5,100.0	5,052.3	5,068.2	4,968.2	14.4	18.7	-60.96	-770.5	-541.3	461.2	434.7	26.53	17.382		

CC - Min centre to center distance or convergent point, SF - min separation factor, ES - min ellipse separation

# Cathedral Energy Services

## Anticollision Report

<b>Company:</b>	EnCana Oil & Gas (USA) Inc	<b>Local Co-ordinate Reference:</b>	Well Bohrer 2F-19H-E368
<b>Project:</b>	DJ Wattenberg	<b>TVD Reference:</b>	WELL @ 5084.0ft (Original Well Elev)
<b>Reference Site:</b>	S19-T3N-R68W (Bohrer)	<b>MD Reference:</b>	WELL @ 5084.0ft (Original Well Elev)
<b>Site Error:</b>	0.0ft	<b>North Reference:</b>	True
<b>Reference Well:</b>	Bohrer 2F-19H-E368	<b>Survey Calculation Method:</b>	Minimum Curvature
<b>Well Error:</b>	0.0ft	<b>Output errors are at</b>	2.00 sigma
<b>Reference Wellbore</b>	Hz	<b>Database:</b>	USA EDM 5000 Multi Users DB
<b>Reference Design:</b>	Plan #1	<b>Offset TVD Reference:</b>	Offset Datum

Offset Design													S19-T3N-R68W (Bohrer) - Bohrer 2H-19H-E368 - Hz - Plan #1		Offset Site Error:		0.0 ft
Survey Program:													0-Geolink MWD		Offset Well Error:		0.0 ft
Reference		Offset		Semi Major Axis			Distance							Warning			
Measured Depth	Vertical Depth	Measured Depth	Vertical Depth	Reference	Offset	Highside Toolface	Offset Wellbore Centre		Between Centres	Between Ellipses	Total Uncertainty Axis	Separation Factor					
(ft)	(ft)	(ft)	(ft)	(ft)	(ft)	(°)	+N/-S (ft)	+E/-W (ft)	(ft)	(ft)							
5,200.0	5,151.1	5,167.6	5,065.1	14.8	19.1	-60.96	-788.7	-554.3	471.9	444.8	27.12	17.404					
5,300.0	5,249.9	5,267.1	5,162.0	15.1	19.6	-60.96	-806.8	-567.4	482.6	454.9	27.70	17.424					
5,400.0	5,348.7	5,366.5	5,258.9	15.4	20.0	-60.95	-825.0	-580.5	493.3	465.0	28.28	17.443					

# Cathedral Energy Services

## Anticollision Report

<b>Company:</b>	EnCana Oil & Gas (USA) Inc	<b>Local Co-ordinate Reference:</b>	Well Bohrer 2F-19H-E368
<b>Project:</b>	DJ Wattenberg	<b>TVD Reference:</b>	WELL @ 5084.0ft (Original Well Elev)
<b>Reference Site:</b>	S19-T3N-R68W (Bohrer)	<b>MD Reference:</b>	WELL @ 5084.0ft (Original Well Elev)
<b>Site Error:</b>	0.0ft	<b>North Reference:</b>	True
<b>Reference Well:</b>	Bohrer 2F-19H-E368	<b>Survey Calculation Method:</b>	Minimum Curvature
<b>Well Error:</b>	0.0ft	<b>Output errors are at</b>	2.00 sigma
<b>Reference Wellbore</b>	Hz	<b>Database:</b>	USA EDM 5000 Multi Users DB
<b>Reference Design:</b>	Plan #1	<b>Offset TVD Reference:</b>	Offset Datum

Offset Design S19-T3N-R68W (Bohrer) - Bohrer 2I-19H-E368 - Hz - Plan #1													Offset Site Error:	0.0 ft
Survey Program: 0-Geolink MWD													Offset Well Error:	0.0 ft
Reference		Offset		Semi Major Axis			Distance				Total Uncertainty Axis	Separation Factor	Warning	
Measured Depth (ft)	Vertical Depth (ft)	Measured Depth (ft)	Vertical Depth (ft)	Reference (ft)	Offset (ft)	Highside Toolface (°)	Offset Wellbore Centre +N/-S (ft)	+E/-W (ft)	Between Centres (ft)	Between Ellipses (ft)				
0.0	0.0	0.0	0.0	0.0	0.0	-180.00	-29.1	0.0	29.2					
100.0	100.0	99.0	99.0	0.1	0.1	-180.00	-29.1	0.0	29.1	28.9	0.26	111.876		
200.0	200.0	199.0	199.0	0.3	0.3	-180.00	-29.1	0.0	29.1	28.5	0.61	47.844 CC, ES		
300.0	300.0	298.6	298.5	0.5	0.5	-179.22	-29.9	-0.4	29.9	28.9	0.96	31.190		
400.0	400.0	398.0	398.0	0.7	0.7	-177.06	-32.1	-1.7	32.2	30.9	1.31	24.545		
500.0	500.0	497.4	497.3	0.8	0.8	-174.07	-35.9	-3.7	36.1	34.5	1.67	21.601		
600.0	600.0	596.6	596.3	1.0	1.0	-52.04	-41.2	-6.6	41.2	39.2	2.01	20.543		
700.0	700.0	695.8	695.1	1.2	1.3	-51.17	-47.9	-10.4	46.9	44.6	2.36	19.871		
800.0	799.9	794.8	793.7	1.4	1.5	-51.31	-56.1	-14.9	53.1	50.4	2.72	19.528		
900.0	899.7	893.6	891.9	1.6	1.7	-52.14	-65.9	-20.3	59.9	56.8	3.09	19.373		
1,000.0	999.4	992.3	989.8	1.8	2.0	-53.43	-77.0	-26.4	67.2	63.7	3.48	19.326 SF		
1,100.0	1,098.9	1,090.9	1,087.3	2.0	2.3	-55.01	-89.7	-33.4	75.1	71.2	3.89	19.333		
1,200.0	1,198.3	1,189.2	1,184.3	2.2	2.6	-56.75	-103.7	-41.1	83.7	79.3	4.32	19.356		
1,300.0	1,297.4	1,287.4	1,280.9	2.5	3.0	-58.58	-119.2	-49.7	92.9	88.1	4.80	19.370		
1,400.0	1,396.3	1,385.4	1,376.9	2.8	3.3	-60.44	-136.1	-59.0	102.9	97.5	5.31	19.369		
1,500.0	1,495.1	1,483.1	1,472.4	3.1	3.7	-61.87	-154.4	-69.1	114.1	108.2	5.85	19.506		
1,600.0	1,593.9	1,580.5	1,567.2	3.3	4.1	-62.64	-174.1	-79.9	126.8	120.4	6.39	19.824		
1,700.0	1,692.7	1,677.6	1,661.3	3.6	4.6	-62.90	-195.1	-91.5	140.9	134.0	6.94	20.288		
1,800.0	1,791.5	1,774.3	1,754.5	4.0	5.0	-62.79	-217.3	-103.8	156.5	149.0	7.50	20.873		
1,900.0	1,890.4	1,871.1	1,847.5	4.3	5.5	-62.42	-241.0	-116.9	173.4	165.3	8.04	21.559		
2,000.0	1,989.2	1,969.6	1,942.0	4.6	6.0	-62.05	-265.4	-130.3	190.7	182.1	8.59	22.191		
2,100.0	2,088.0	2,068.1	2,036.4	4.9	6.5	-61.73	-289.8	-143.8	208.0	198.9	9.15	22.741		
2,200.0	2,186.8	2,166.6	2,130.9	5.2	7.0	-61.46	-314.2	-157.3	225.3	215.6	9.70	23.225		
2,300.0	2,285.6	2,265.1	2,225.3	5.5	7.5	-61.23	-338.7	-170.7	242.7	232.4	10.26	23.652		
2,400.0	2,384.4	2,363.5	2,319.8	5.8	8.1	-61.03	-363.1	-184.2	260.0	249.2	10.82	24.033		
2,500.0	2,483.2	2,462.0	2,414.3	6.1	8.6	-60.86	-387.5	-197.7	277.3	266.0	11.38	24.374		
2,600.0	2,582.0	2,560.5	2,508.7	6.4	9.1	-60.71	-411.9	-211.2	294.7	282.7	11.94	24.681		
2,700.0	2,680.8	2,659.0	2,603.2	6.8	9.6	-60.57	-436.3	-224.6	312.0	299.5	12.50	24.959		
2,800.0	2,779.6	2,757.5	2,697.6	7.1	10.1	-60.45	-460.8	-238.1	329.3	316.3	13.06	25.211		
2,900.0	2,878.5	2,855.9	2,792.1	7.4	10.6	-60.34	-485.2	-251.6	346.7	333.1	13.63	25.442		
3,000.0	2,977.3	2,954.4	2,886.5	7.7	11.1	-60.24	-509.6	-265.0	364.0	349.8	14.19	25.653		
3,100.0	3,076.1	3,052.9	2,981.0	8.0	11.6	-60.15	-534.0	-278.5	381.4	366.6	14.76	25.847		
3,200.0	3,174.9	3,151.4	3,075.4	8.3	12.2	-60.07	-558.4	-292.0	398.7	383.4	15.32	26.026		
3,300.0	3,273.7	3,249.9	3,169.9	8.7	12.7	-59.99	-582.9	-305.5	416.1	400.2	15.89	26.192		
3,400.0	3,372.5	3,348.4	3,264.3	9.0	13.2	-59.92	-607.3	-318.9	433.4	417.0	16.45	26.345		
3,500.0	3,471.3	3,446.8	3,358.8	9.3	13.7	-59.86	-631.7	-332.4	450.7	433.7	17.02	26.488		
3,600.0	3,570.1	3,545.3	3,453.2	9.6	14.2	-59.80	-656.1	-345.9	468.1	450.5	17.58	26.622		
3,700.0	3,668.9	3,643.8	3,547.7	9.9	14.7	-59.74	-680.5	-359.3	485.4	467.3	18.15	26.747		

# Cathedral Energy Services

## Anticollision Report

<b>Company:</b>	EnCana Oil & Gas (USA) Inc	<b>Local Co-ordinate Reference:</b>	Well Bohrer 2F-19H-E368
<b>Project:</b>	DJ Wattenberg	<b>TVD Reference:</b>	WELL @ 5084.0ft (Original Well Elev)
<b>Reference Site:</b>	S19-T3N-R68W (Bohrer)	<b>MD Reference:</b>	WELL @ 5084.0ft (Original Well Elev)
<b>Site Error:</b>	0.0ft	<b>North Reference:</b>	True
<b>Reference Well:</b>	Bohrer 2F-19H-E368	<b>Survey Calculation Method:</b>	Minimum Curvature
<b>Well Error:</b>	0.0ft	<b>Output errors are at</b>	2.00 sigma
<b>Reference Wellbore</b>	Hz	<b>Database:</b>	USA EDM 5000 Multi Users DB
<b>Reference Design:</b>	Plan #1	<b>Offset TVD Reference:</b>	Offset Datum

Reference Depths are relative to WELL @ 5084.0ft (Original Well Elev)  
Offset Depths are relative to Offset Datum  
Central Meridian is -105.500000 °

Coordinates are relative to: Bohrer 2F-19H-E368  
Coordinate System is US State Plane 1983, Colorado Northern Zone  
Grid Convergence at Surface is: 0.29°

