

LOG created using L PLOT VH Version 3.0, April 12, 2013, Copyright (C) 1999-2009 Pason Systems Corp.

OPERATOR:	NOBLE ENERGY, INC.
WELL:	SHABLE FEDERAL LB33-78HN
LOCATION:	SEC33 T9N R60W
COUNTY:	WELD
STATE:	COLORADO
SPOT:	288' FNL, 400' FWL
ELEVATION:	4940'GL, 4956'KB
FIELD:	WILDCAT
SPUD DATE:	3/28/13
TD DATE:	4/1/13 (PILOT HOLE)
DATES LOGGED:	3/30/13 - 4/1/13 (PILOT HOLE)
DEPTHS LOGGED:	642' - 6716' (PILOT HOLE)
GEOLOGISTS:	GARY MYERS, TED STOCKWELL
DRILLING FLUID:	LSND
DRILLING RIG:	PRECISION 828
API:	05-123-36799
LOG TYPE:	VERTICAL PILOT HOLE
SCALE:	1:240 (5 inches per 100 feet)
REMARKS:	WELLSITE GEOLOGICAL SERVICES PROVIDED BY COLUMBINE LOGGING INC.

LOG CONTINUES ON FILE: Shable Federal LB33-78HN Lateral.lplot

LITHOLOGIES



MODIFIERS

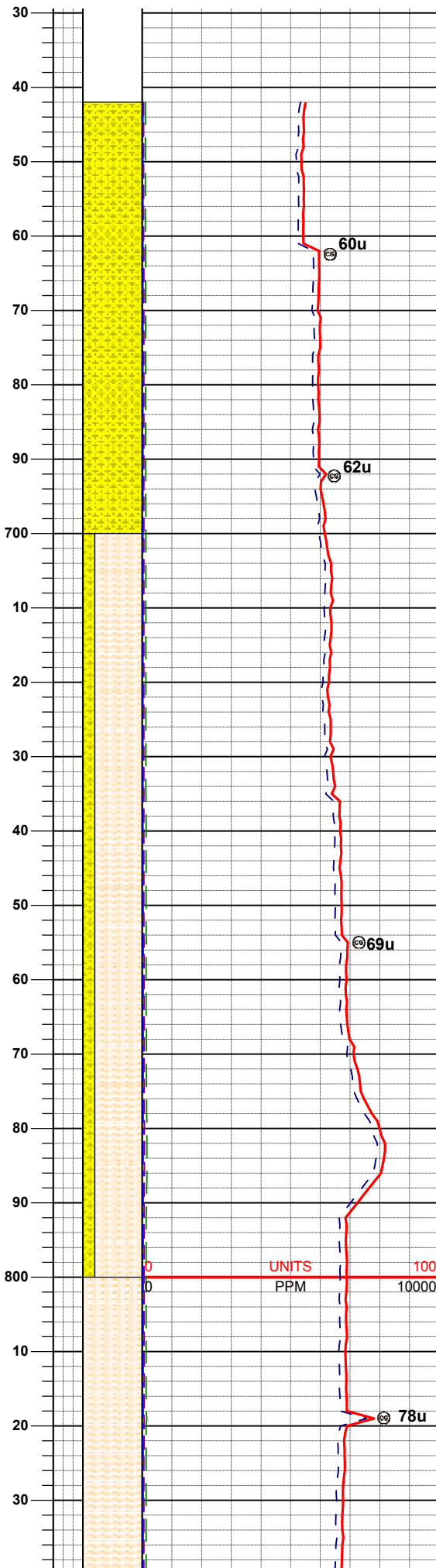
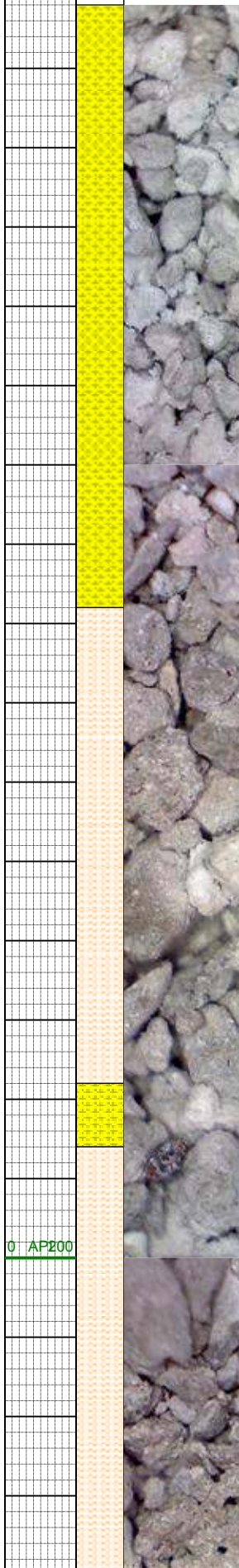
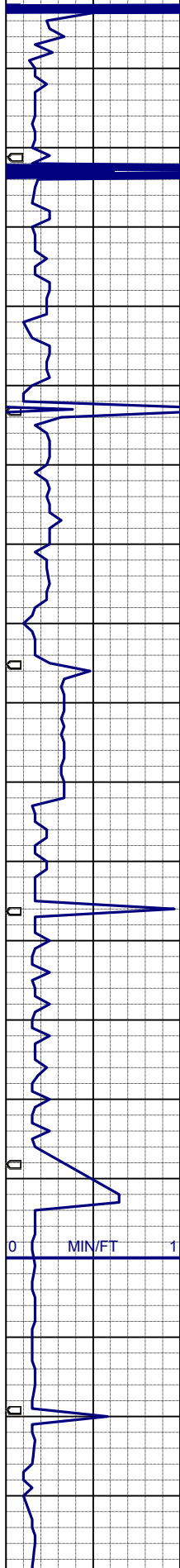
B Bentonite

ENGINEERING SYMBOLS



ROP		ROTATE/SLIDE	GAMMA	INTERPRETIVE LITHOLOGY	PICTURE	DEPTH (FEET)	OIL SHOWS	CUTTINGS LITHOLOGY	GAS		LITHOLOGY DESCRIPTION
0	MIN/FT		1						0	AP200	
BIT #2						620			C1		
SMITH									PPM	10000	
MDi516									C2		
8 75"									PPM	10000	
									C3		
									PPM	10000	
									C4		
									PPM	10000	
COLUMBINE LOGGING, INC. ON LOCATION 03/29/2013											

SER# JG2062
IN @ MD 642'



MANNED 2-PERSON LOGGING
WITH BLOODHOUND GAS
CHROMATOGRAPH UNIT #0331
BEGAN LOGGING ON 03/30/2013

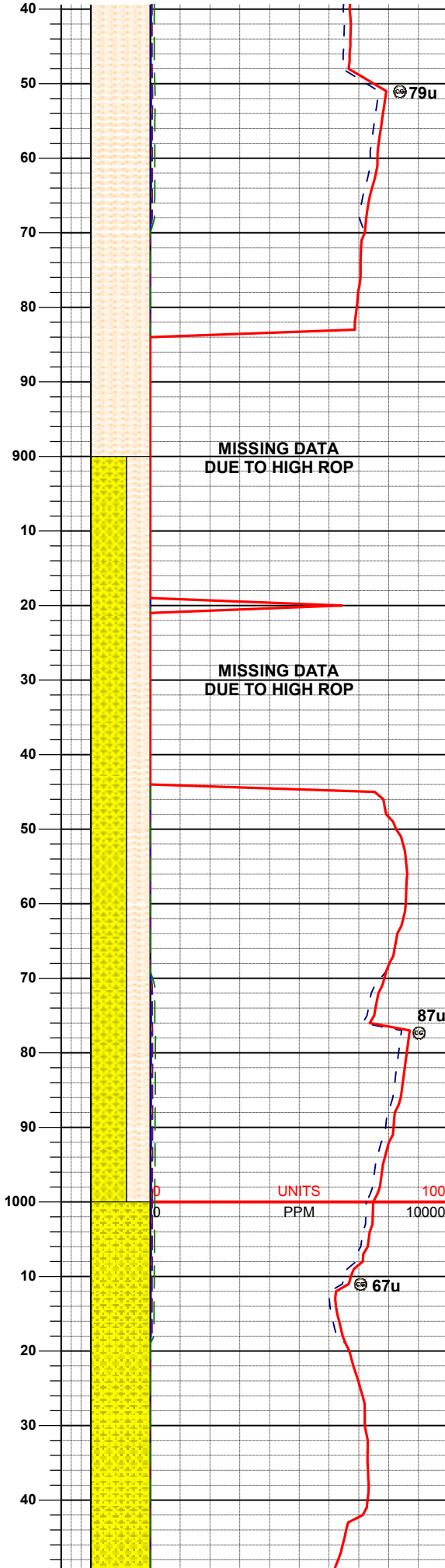
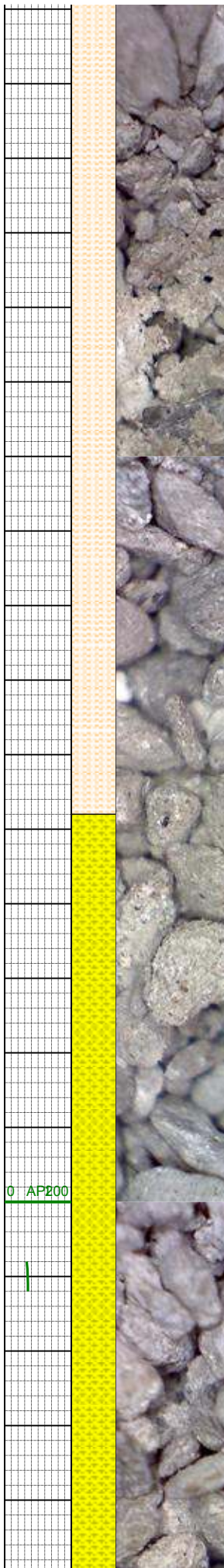
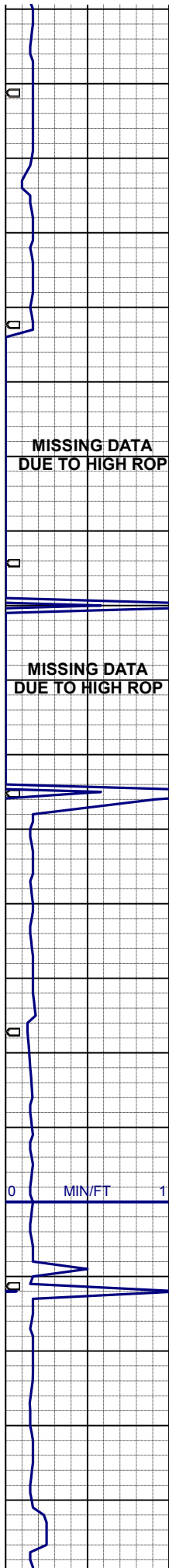
SHYSS: vlt-mgy- gybrn, trnsI- op, vf-
fgr, sbrndd, psrt, vsft- sft, arg mtX, p
cmt, sl calc, slty

MD 674'
INC 0.7°
AZI 337.7°
TVD 674.0'

BEGIN 100' SAMPLES
WITH 100' DESCRIPTIONS

SHSLTST: lt-mgy- gybrn, vf-fgr,
sbrndd, occ sbplty, p srt, sft, argmtX,
sl calc, slty, sdy ip, tr pyr, grdg- shyss

MD 768'
INC 0.5°
AZI 4.6°
TVD 768.0'



SHSLTST: lt-mgy- gybrn, vf-fgr, sbrndd, occ sbply, p srt, sft- sl firm, arg mtx, sl calc, slty, sdy ip, tr pyr, grdg- shyss

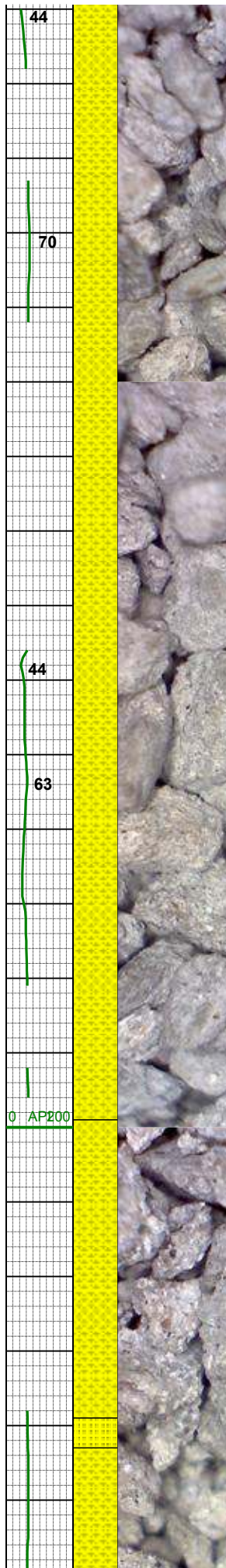
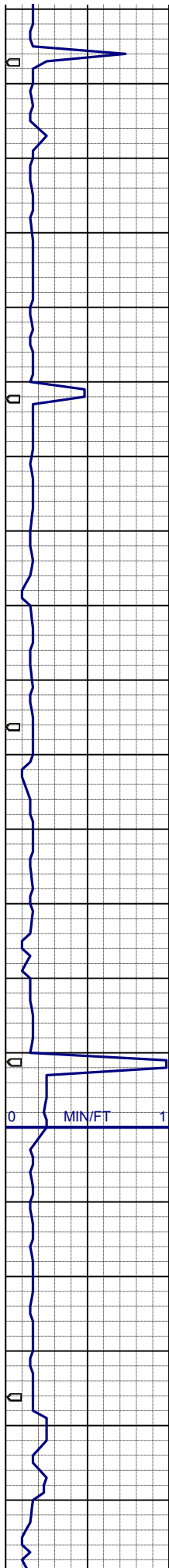
MD 863'
INC 0.4°
AZI 334.2°
TVD 863.0'

SHYSS: vlt-mgy- gybrn, trnsi -op, vf-fgr, sbrndd- sbply, psrt, sft, arg mtx, p cmt, sl calc, slty, tr glau, grdg-shysltst, occ clr- trnsi wh mgr ss w/ glau

MD 960'
INC 0.4°
AZI 327.7°
TVD 960.0'

SHYSS: vlt-mgy- gybrn, trnsi -op, vf-fgr, sbrndd- sbply, psrt, sft, arg mtx, p cmt, sl calc, slty, tr glau, grdg-shysltst, occ clr- trnsi wh mgr ss w/ glau

MD 1050'
INC 0.7°



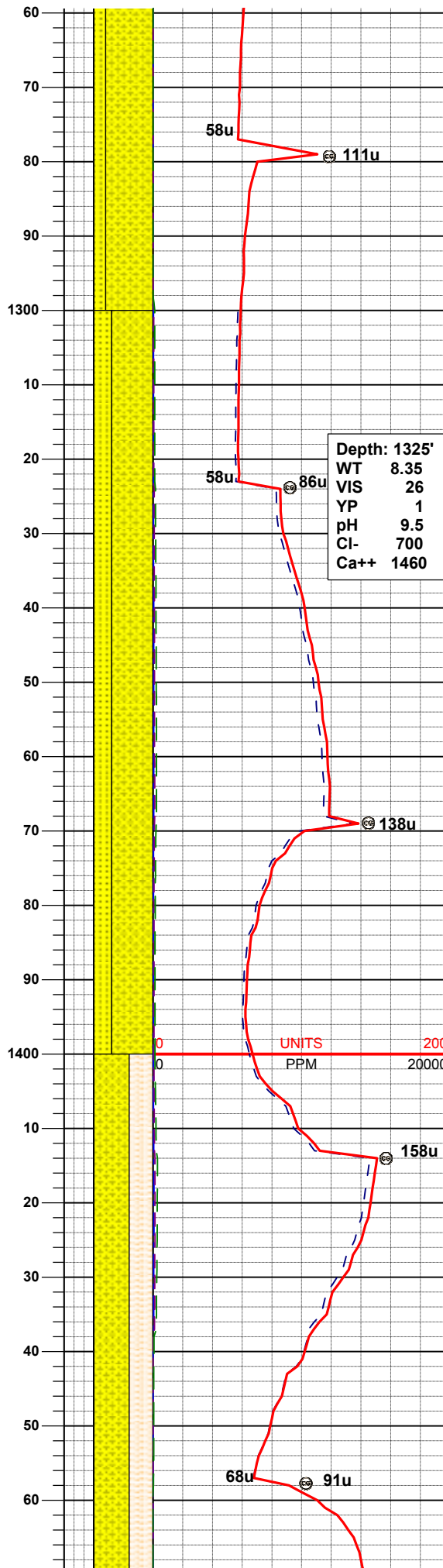
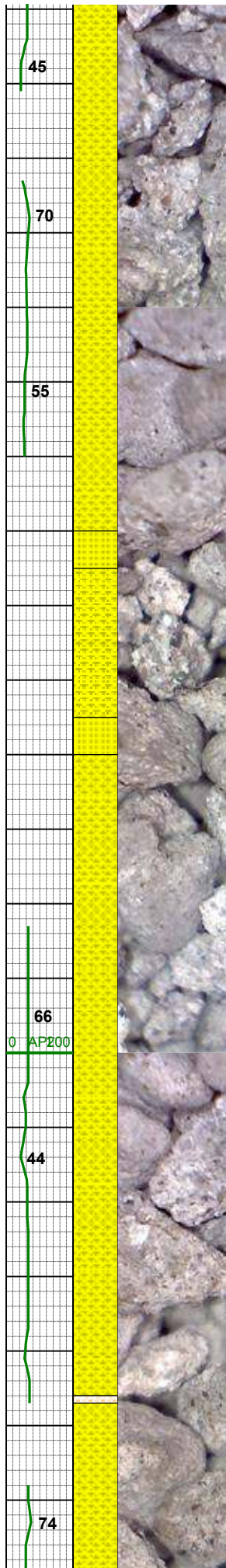
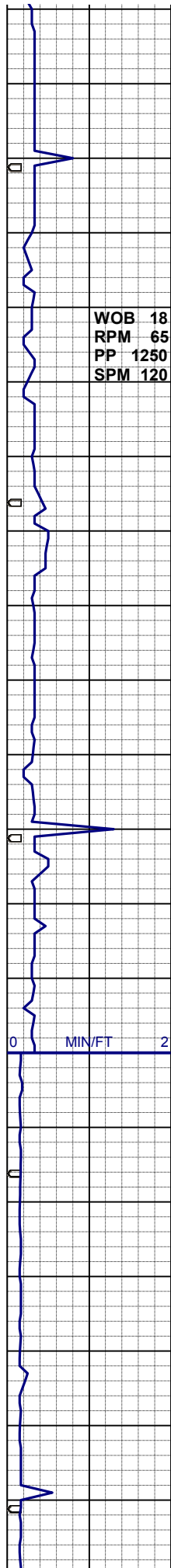
MD 1140.0'
AZI 355.6°
TVD 1050.0'

MD 1140'
INC 0.6°
AZI 328.4°
TVD 1140.0'

SHYSS: vlt-mgy- gybrn, trnsl -op, vf-
fgr, sbrndd- sbblky, psrt, sft, arg mtx,
p cmt, sl calc, slty, tr glau, grdg-
shysltst, occ clr- trnsl wh mgr ss w/
glau

MD 1230'
INC 0.8°
AZI 9.2°
TVD 1230.0'

SHYSS: vlt-mgy- gybrn, trnsl -op, vf-
fgr, sbrndd- sbblky, psrt, sft, arg mtx,
p cmt, sl calc, slty, tr glau, grdg-
shysltst
SS: wh-mgy, clr- trnsl, f-mgr, sbblky,
mod srt, fri, p cmt, arg- sil mtx, sl calc,



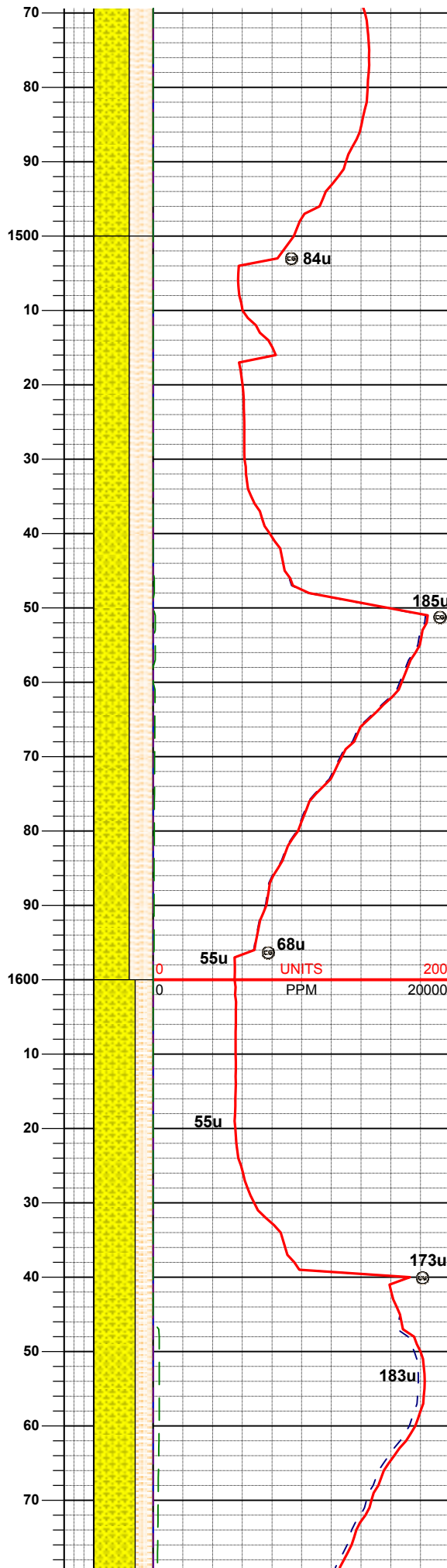
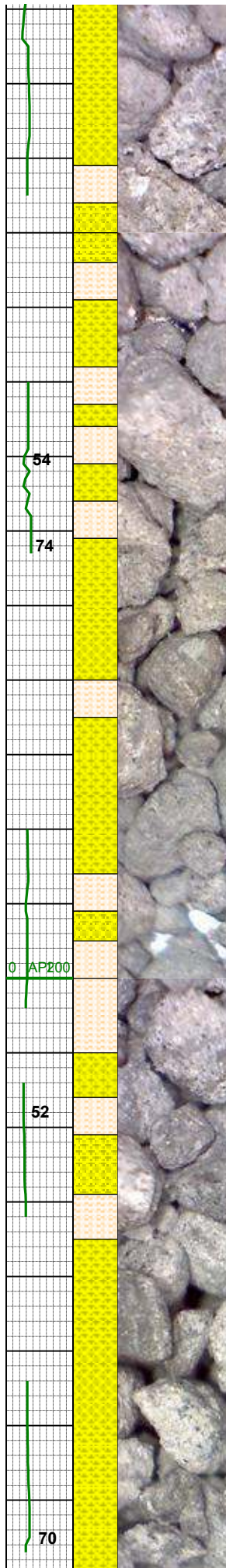
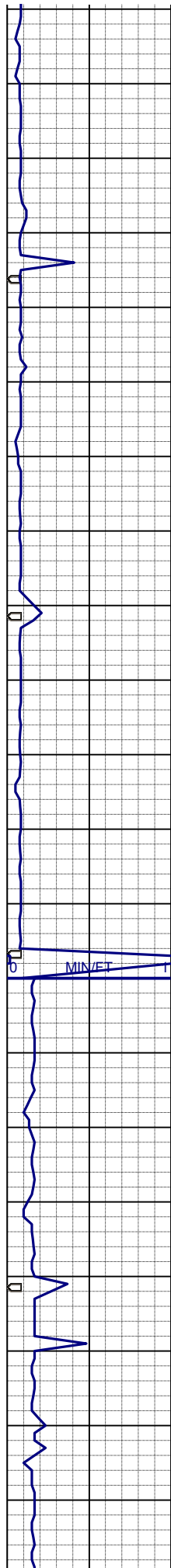
occ glau

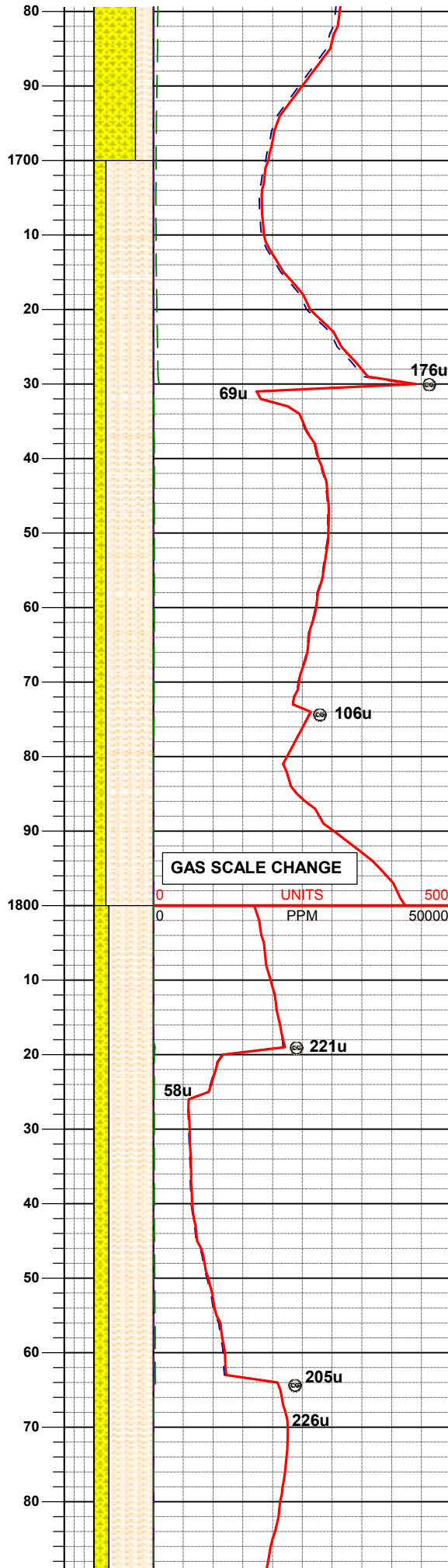
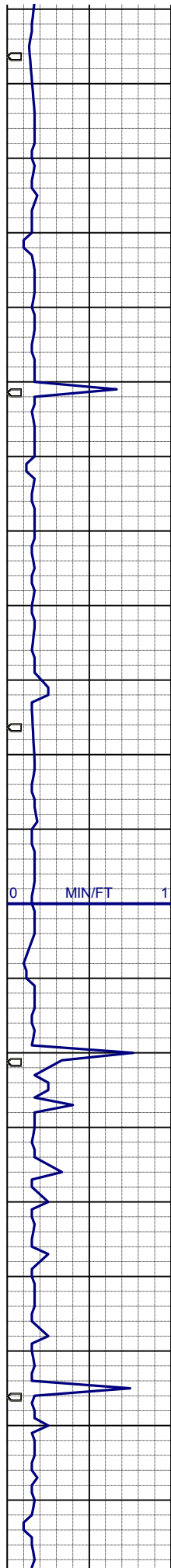
MD 1320'
INC 0.7°
AZI 12.7°
TVD 1320.0'

SHYSS: vlt-mgy- gybrn, trnsl -op, vf-
fgr, sbrnidd- sbblky, psrt, sft, arg mtx,
p cmt, sl calc, slty, tr glau, grdg-
shysltst
SS: wh-mgy, clr- trnsl, f-mgr, sbblky,
mod srt, fri, p cmt, arg- sil mtx, sl calc,
occ glau

MD 1410'
INC 0.6°
AZI 340.9°
TVD 1410.0'

SHYSS: vlt-mgy- gybrn, trnsl -op, vf-
fgr, sbrnidd- sbblky, psrt, sft, arg mtx,
p cmt, sl calc, slty, tr glau, grdg-
shysltst





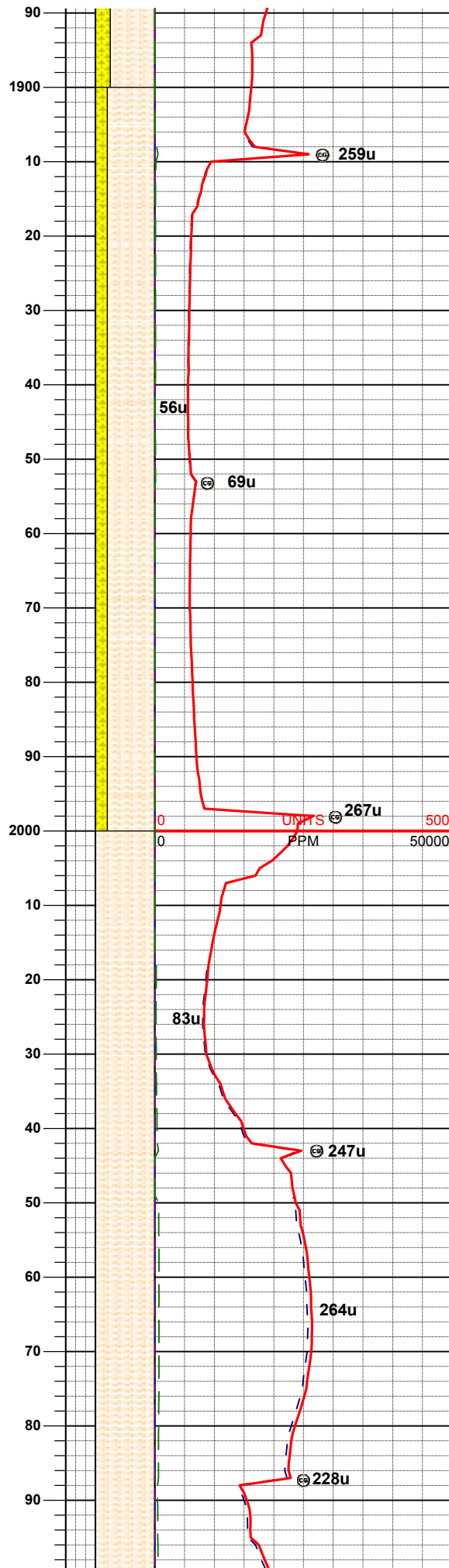
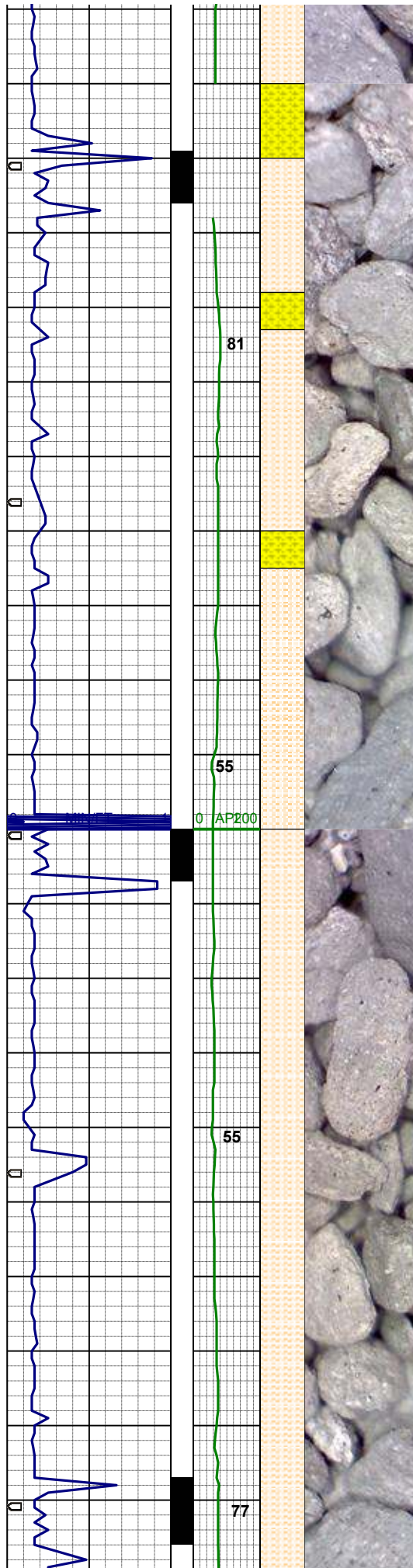
AZI 346.8°
TVD 1679.9'

SHSLTST: lt-mgy-dkgy, vfgr-fgr,
sbbiky-sbply, sft, varg mtx, sl calc,
occ sdy ip, tr pyr
SHYSS: vlt-mgy- gybrn, trnsi -op, vf-
fgr, sbrnnd- sbang, biky-sbbiky, psrt,
sft, arg mtx, p cmt, sl calc, slty, tr
glau, grdg- shysltst

MD 1770'
INC 0.8°
AZI 21.3°
TVD 1769.9'

SHSLTST: lt-mgy-dkgy, vfgr-fgr,
sbbiky-sbply, sft, varg mtx, sl calc,
occ sdy ip, tr pyr, tr dkgy sltysh, grdg-
sltysh
SHYSS: vlt-mgy- gybrn, trnsi -op, vf-
fgr, sbrnnd- sbang, biky-sbbiky, psrt,
sft, arg mtx, p cmt, sl calc, slty, tr
glau, grdg- shysltst

MD 1860'
INC 0.5°
AZI 37.3°
TVD 1859.9'



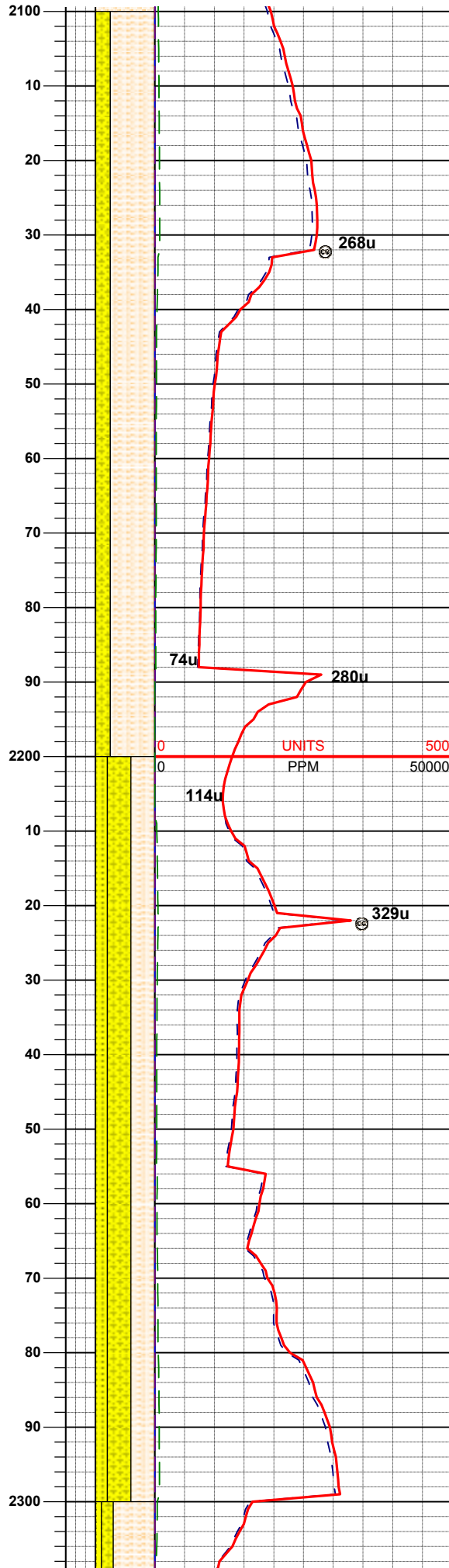
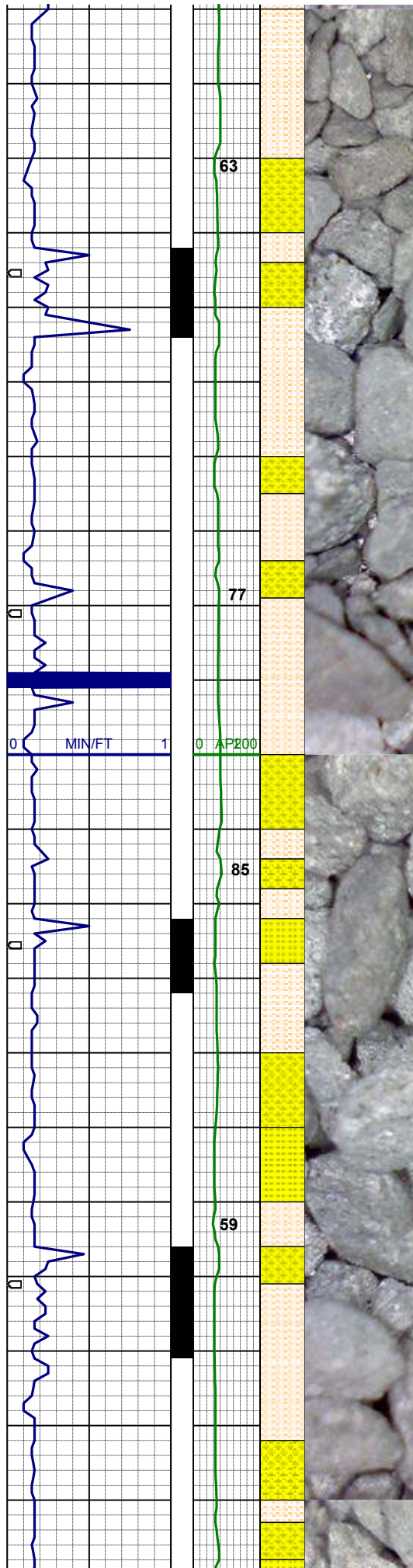
SHSLTST: lt-mgy-dkgy, vfgr-fgr, sbblky-sbplty, sft, varg mtx, sl calc, occ sdy ip, tr pyr, tr dkgy sltysh, grdg-sltys
SHYSS: vlt-mgy- gybrn, trnsi -op, vf-fgr, sbrndd- sbang, blky-sbblky, psrt, sft, arg mtx, p cmt, sl calc, slty, tr glau, grdg- shysltst

MD 1949'
INC 1.1°
AZI 31.5°
TVD 1948.9'

MD 2039'
INC 1.1°
AZI 44.7°
TVD 2038.9'

SHSLTST: lt-mgy, vfgr-fgr, sbblky-sbplty, sft, varg mtx, sl calc, occ sdy ip, tr pyr, tr dkgy sltysh

WT 8.40 / VIS 27



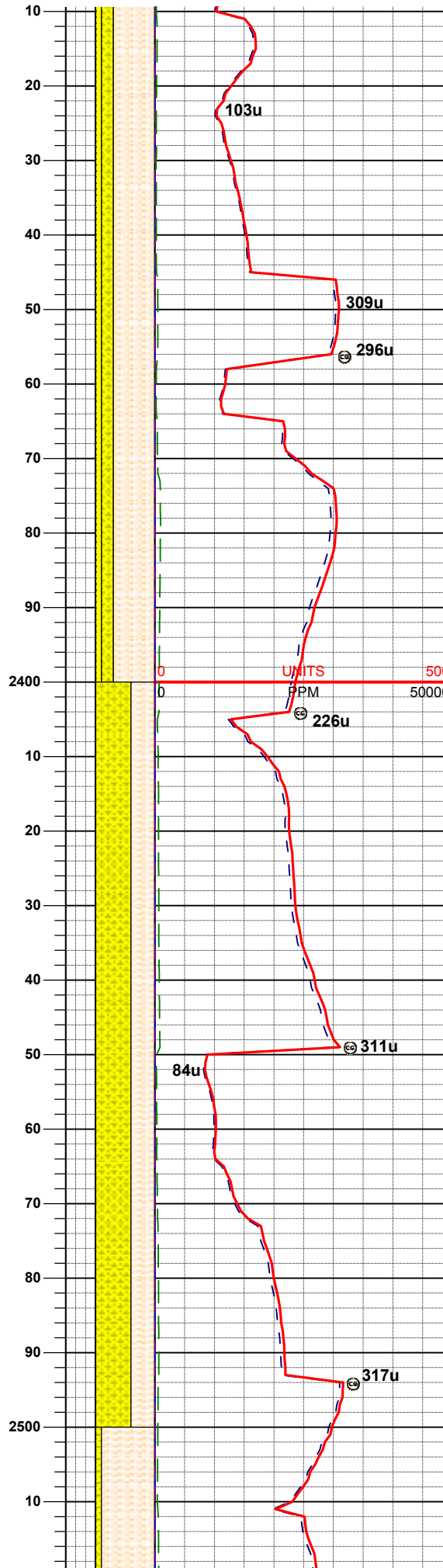
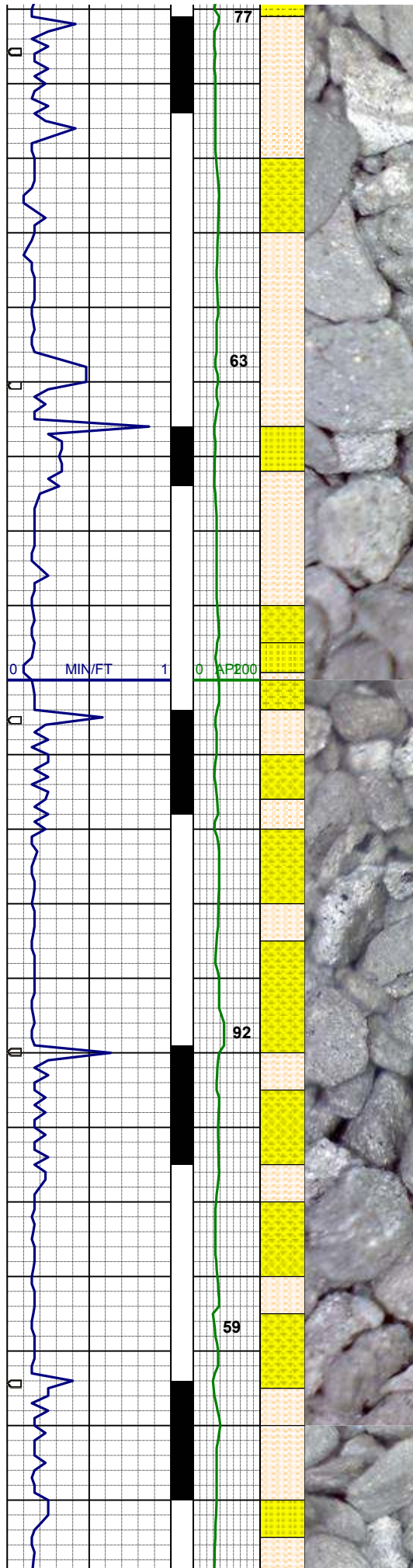
MD 2129'
INC 2.0°
AZI 52.8°
TVD 2128.9'

SHSLTST: lt-mgy-dkgy, vfgr-fgr, sbblky-sbplty, sft, varg mtx, sl calc, occ sdy ip, tr pyr, tr dkgy sltysh, grdg-sltysh
SHYSS: vlt-mgy-gybrn, trnsi-op, vf-fgr, sbrnnd-sbang, blky-sbblky, psrt, sft, arg mtx, p cmt, sl calc, slty, tr glau, grdg-shysltst

MD 2219'
INC 2.5°
AZI 55.0°
TVD 2218.8'

SHSLTST: lt-mgy-dkgy, vfgr-fgr, sbblky-sbplty, sft, varg mtx, sl calc, occ sdy ip, tr pyr, tr dkgy sltysh, grdg-sltysh
SHYSS: vlt-mgy-gybrn, trnsi-op, vf-fgr, sbrnnd-sbang, blky-sbblky, psrt, sft, arg mtx, p cmt, sl calc, slty, tr glau, grdg-shysltst
SS: wh-ltgy, trnsi-op, fgr-mgr, sbrnnd-sbang, blky-sbblky, modsrt, sft-firm, sl arg-sil mtx, grdg-shyss

MD 2309'
INC 3.7°



AZI 57.3°
TVD 2308.7'

SHSLTST: lt-mgy-dkgy, vfgr-fgr, sbblky-sbply, sft, varg mtx, sl calc, occ sdy ip, tr pyr, tr dkgy sltysh, grdg-sltys

SHYSS: vlt-mgy- gybrn, trnsi -op, vf-fgr, sbmdd- sbang, blky-sbblky, psrt, sft, arg mtx, p cmt, sl calc, slty, tr glau, grdg- shysltst

SS: wh-ltgy, trnsi-op, fgr-mgr, sbmdd-sbang, blky-sbblky, modsr, sft-firm, sl arg-sil mtx, grdg-shyss

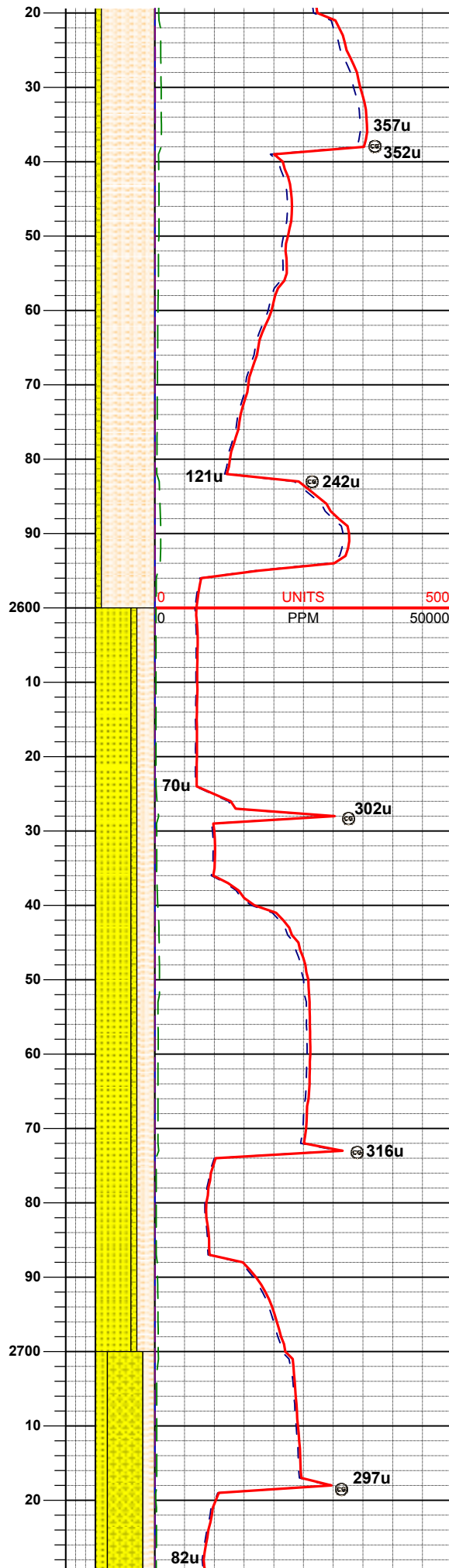
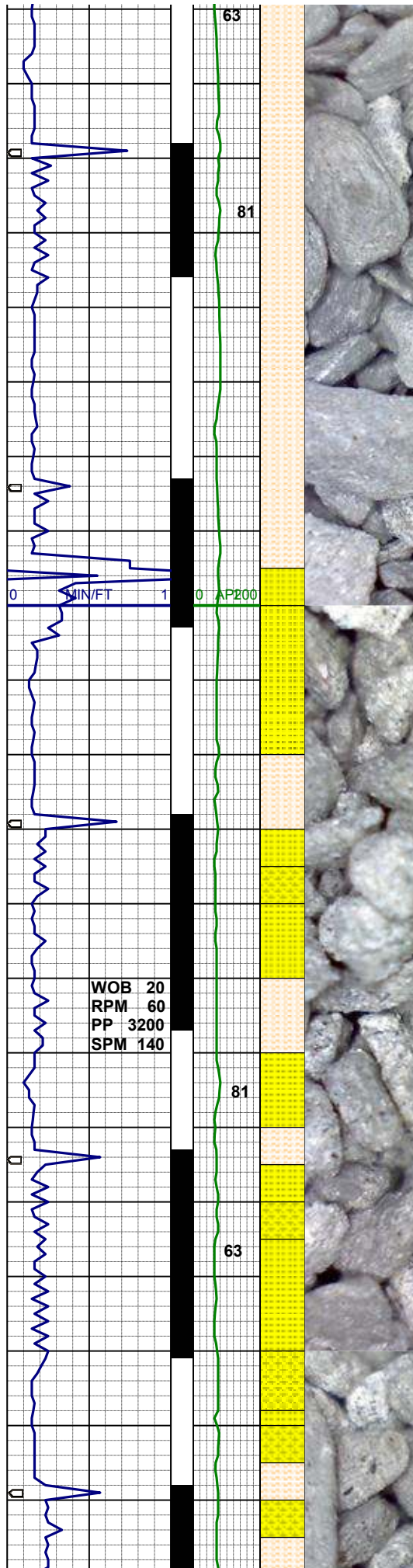
WT 8.50 / VIS 30

MD 2398'
INC 4.4°
AZI 54.2°
TVD 2397.5'

SHYSS: vlt-mgy- gybrn, trnsi -op, vf-fgr, sbmdd- sbang, blky-sbblky, psrt, sft, arg mtx, p cmt, sl calc, slty, tr glau, grdg- shysltst, tr fos

SHSLTST: lt-mgy-dkgy, vfgr-fgr, sbblky-sbply, sft, varg mtx, sl calc, occ sdy ip, tr dkgy sltysh, grdg-sltys

MD 2488'
INC 5.5°
AZI 58.0°
TVD 2487.1'



SHSLTST: lt-mgy-dkgy, vfgr-fgr, sbblky-sbplty, sft, varg mtx, sl calc, occ sdy ip, tr dkgy sltysh, grdg-sltysht
SHYSS: vlt-mgy- gybrn, trnsi -op, vf-fgr, sbrndd- sbang, blky-sbblky, psrt, sft, arg mtx, p cmt, sl calc, slty, grdg-shysltst

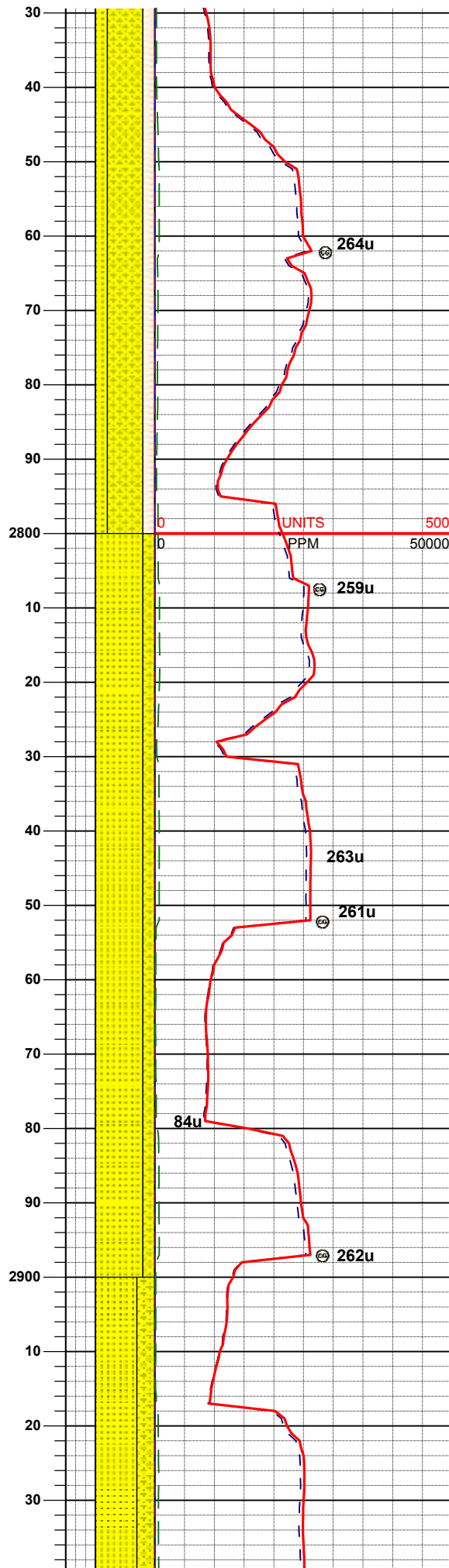
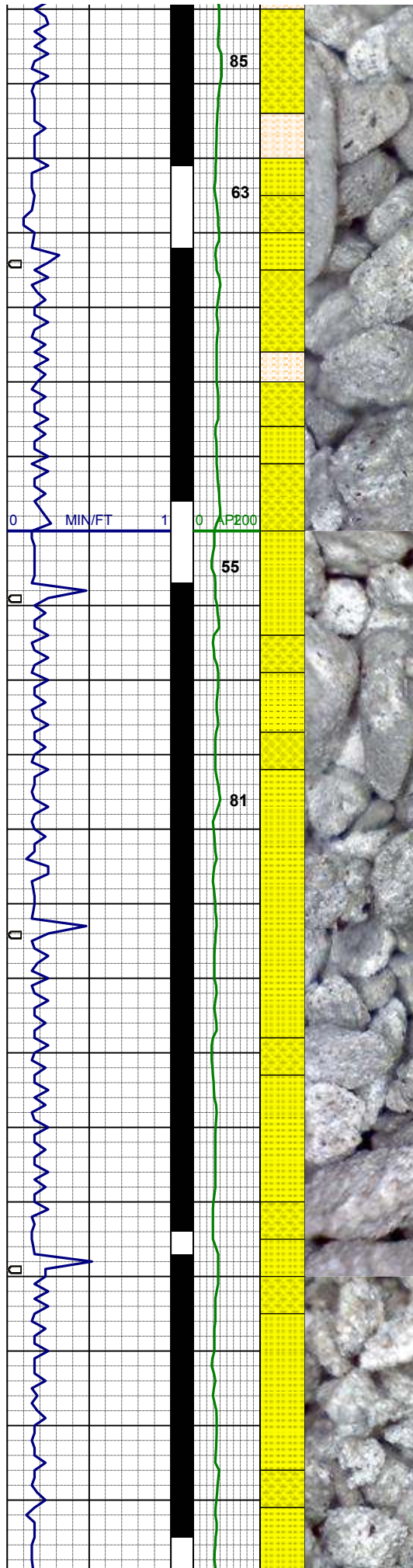
MD 2578'
INC 6.0°
AZI 56.6°
TVD 2576.7'

WT 8.50 / VIS 29

SS: wh-ltgy, trnsi-op, fgr-mgr, sbrndd-sbang, blky-sbblky, modsrt, sft-firm, sl arg-sil mtx,
SHSLTST: lt-mgy-dkgy, vfgr-fgr, sbblky-sbplty, sft, varg mtx, sl calc, occ sdy ip, tr pyr, tr dkgy sltysh, grdg-sltysht
SHYSS: vlt-mgy- gybrn, trnsi -op, vf-fgr, sbrndd- sbang, blky-sbblky, psrt, sft, arg mtx, p cmt, sl calc, slty, tr glau, grdg- shysltst

MD 2668'
INC 7.0°
AZI 53.6°
TVD 2666.1'

SHYSS: vlt-mgy- gybrn, trnsi -op, vf-fgr, sbrndd- sbang, blky-sbblky, psrt, sft, arg mtx, p cmt, sl calc, slty, grdg-shysltst



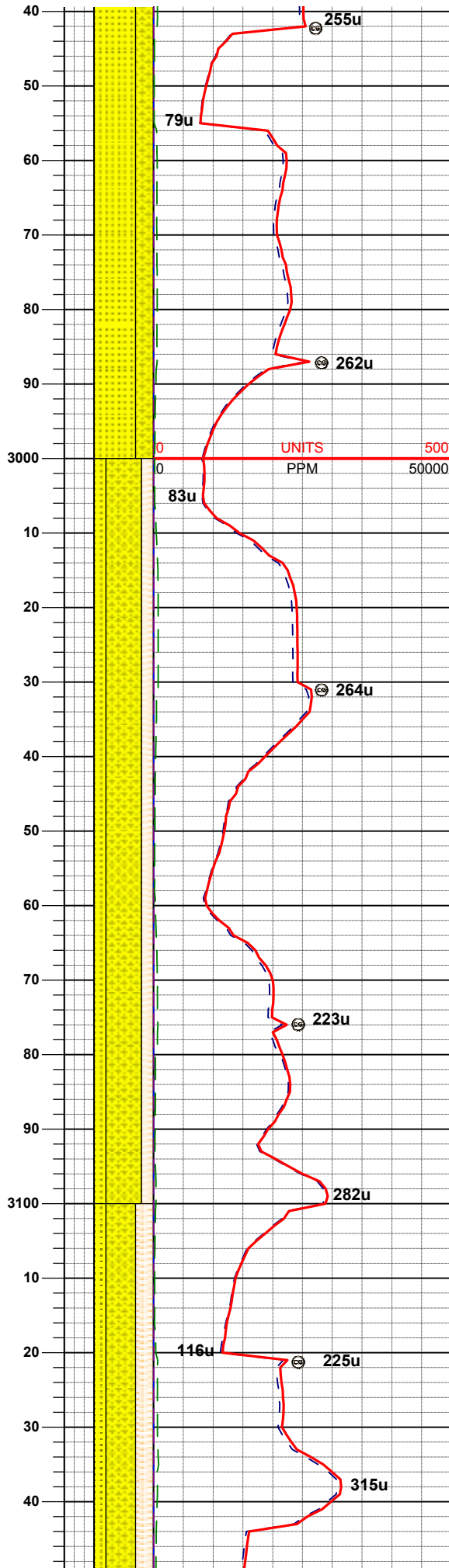
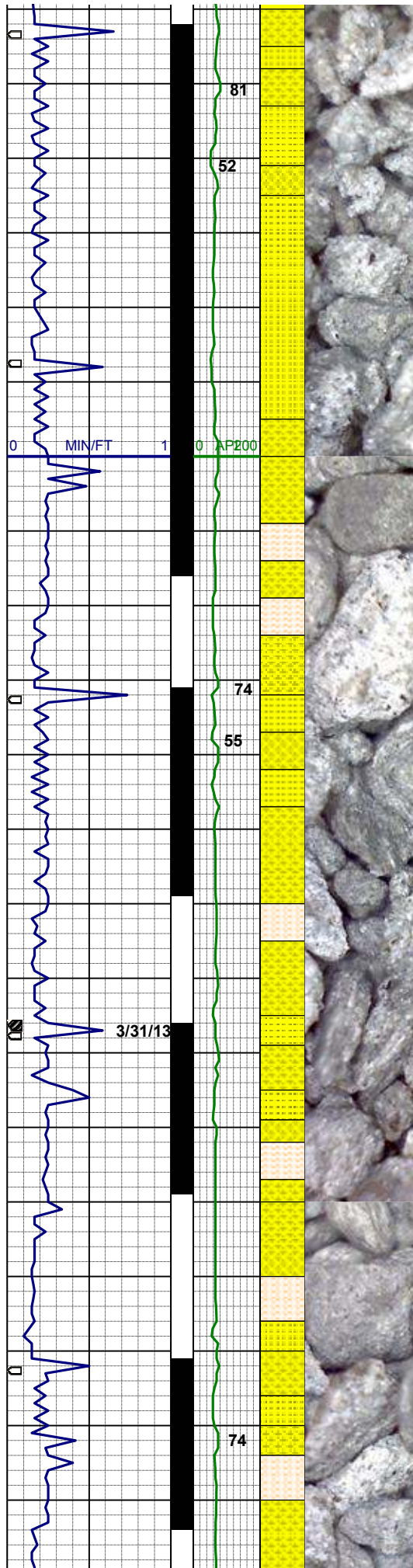
gr, sbrndd-sbang, blk-sbblky, psrt, sft, arg mtx, p cmt, sl calc, slty, tr glau, grdg-shysltst
SS: wh-ltgy, trnsi-op, fgr-mgr, sbrndd-sbang, blk-sbblky, modsrt, sft-firm, sl arg-sil mtx,
SHSLTST: lt-mgy-dkgy, vfgr-fgr, sbblky-sbply, sft, varg mtx, sl calc, occ sdy ip, tr pyr, tr dkgy sltysh, grdg-sltys

MD 2757'
INC 8.0°
AZI 51.3°
TVD 2754.3'

MD 2847'
INC 9.2°
AZI 50.1°
TVD 2843.3'

SS: wh-ltgy, trnsi-op, fgr-mgr, sbrndd-sbang, blk-sbblky, modsrt, sft-firm, sl arg-sil mtx, tr glauc, tr pyr, tr mica
SHYSS: vlt-mgy, trnsi-op, vf- fgr, sbrndd-sbang, blk-sbblky, psrt, sft, arg mtx, p cmt, sl calc, slty, grdg-shysltst

MD 2936'
INC 10.4°
AZI 48.0°
TVD 2931.0'



SS: wh-ltgy, trnsi-op, fgr-mgr, sbrndd-sbang, blkyl-sbblky, modsr, sft-firm, sl arg-sil mt, tr glauc, tr pyr, tr mica
SHYSS: vlt-mgy, trnsi-op, vf-fgr, sbrndd-sbang, blkyl-sbblky, psrt, sft, arg mt, p cmt, sl calc, slty, grdg-shysltst

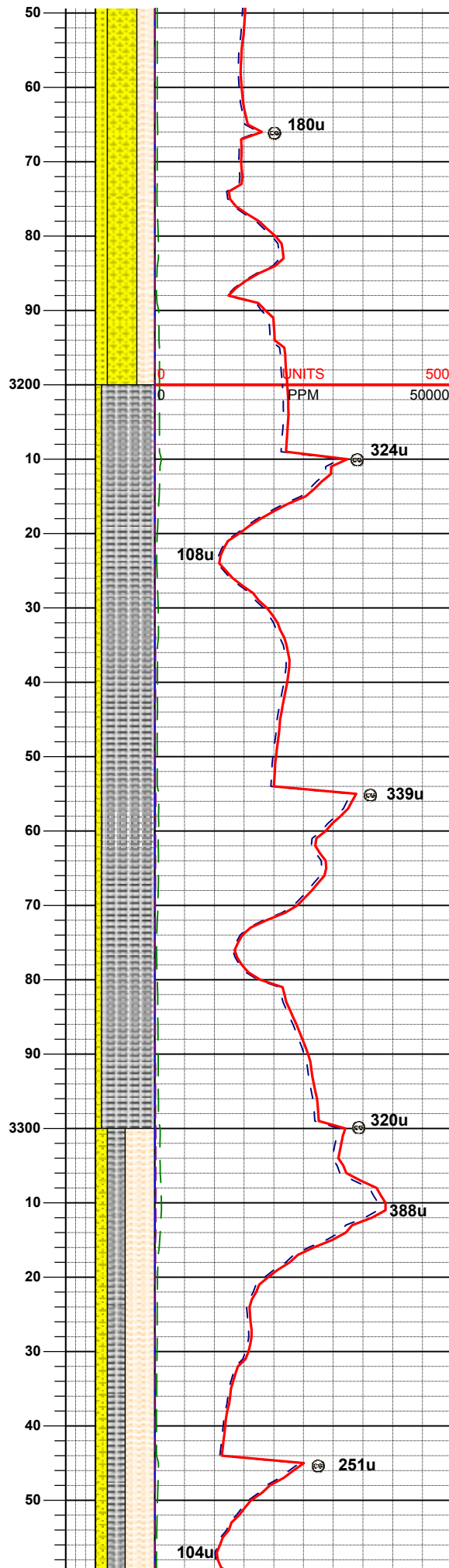
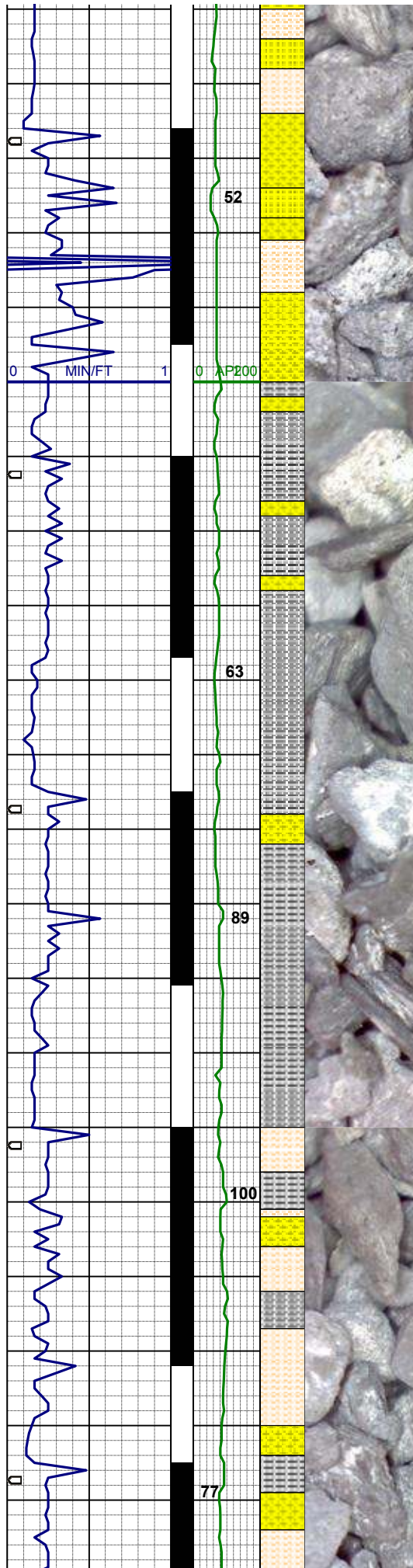
WT 8.55 / VIS 30

MD 3026'
INC 11.3°
AZI 46.4°
TVD 3019.4'

SHYSS: lt-dkgy, trnsi-op, vf-fgr, blkyl-sbblky, psrt, sft, arg mt, p cmt, sl calc, slty, tr glau, grdg-shysltst
SS: wh-ltgy, trnsi-op, fgr-mgr, sbrndd-sbang, blkyl-sbblky, modsr, sft-firm, sl arg-sil mt,
SHSLTST: lt-mgy-dkgy, vfgr-fgr, sbblky-sbply, sft, varg mt, sl calc, occ sdy ip, tr dkgy sltysh, grdg-sltys

MD 3116'
INC 11.4°
AZI 46.4°
TVD 3107.6'

SHYSS: lt-dkgy, trnsi-op, vf-fgr, blkyl-sbblky, psrt, sft, arg mt, p cmt, sl calc, slty, tr glau, grdg-shysltst
SS: wh-ltgy, trnsi-op, fgr-mgr, sbrndd-sbang, blkyl-sbblky, modsr, sft-firm, sl arg-sil mt,
SHSLTST: lt-mgy-dkgy, vfgr-fgr, sbblky-sbply, sft, varg mt, sl calc, occ sdy ip, tr dkgy sltysh, grdg-sltys



SHSLTST: lt-mgy, vgr-gr, sbblky-sbplty, sft, varg mtx, sl calc, occ sdy ip, tr dkgy sltysh, grdg-sltysh

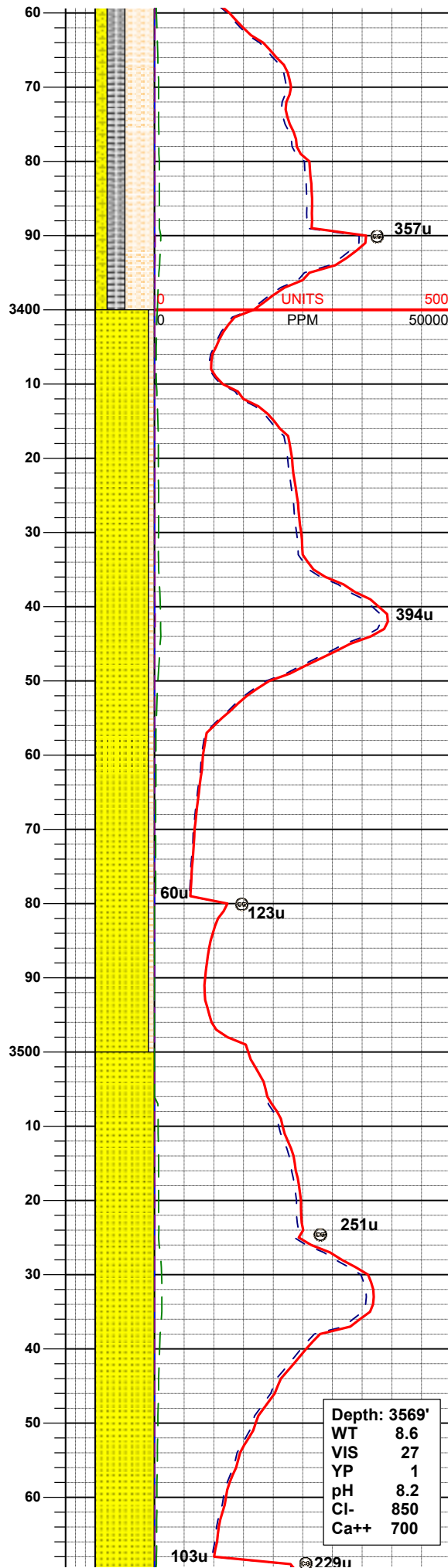
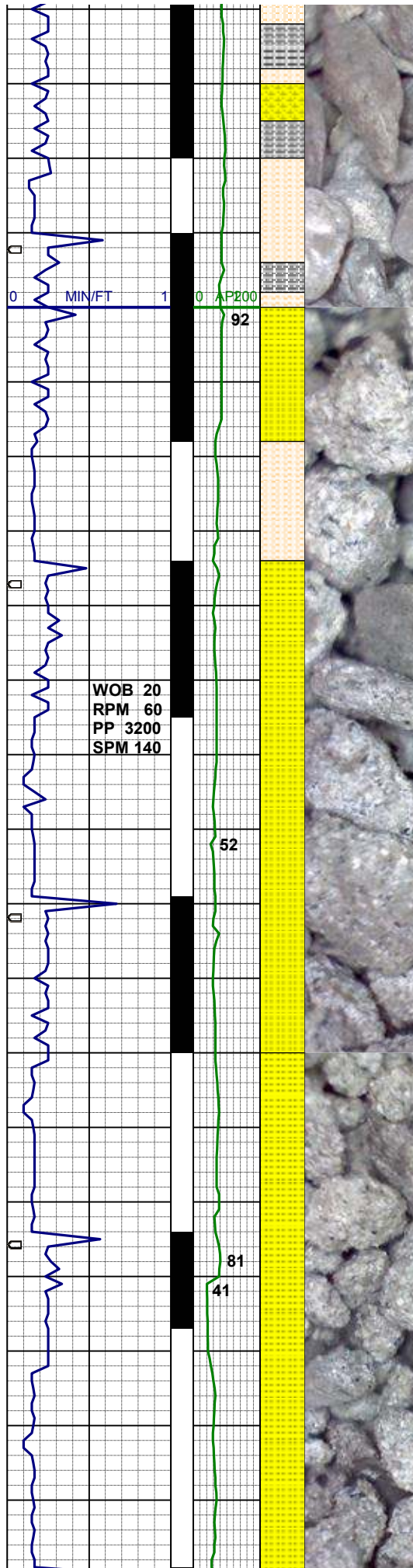
MD 3206'
INC 11.1°
AZI 44.7°
TVD 3195.9'

SLTYSH: lt-dkgy, vfgr-fgr, sbplty-plty, occ sbblky, stf, arg mtx
SHYSS: lt-dkgy, trnsi -op, vf- fgr, blk- sbblky, psrt, sft, arg mtx, sl calc, slty

MD 3296'
INC 10.2°
AZI 47.7°
TVD 3284.4'

WT 8.5 / VIS 28

SHSLTST: lt-mgy, vgr-fgr, sbblky-sbplty, sft, arg mtx, sl calc, occ sdy ip, grdg-sltysh, tr pyr
SLTYSH: lt-dkgy, vfgr-fgr, sbplty-plty, occ sbblky, stf, arg mtx
SHYSS: lt-dkgy, trnsi -op, vf- fgr, blk- sbblky, psrt, sft, arg mtx, sl calc, slty



MD 3385'
INC 12.2°
AZI 62.4°
TVD 3371.7'

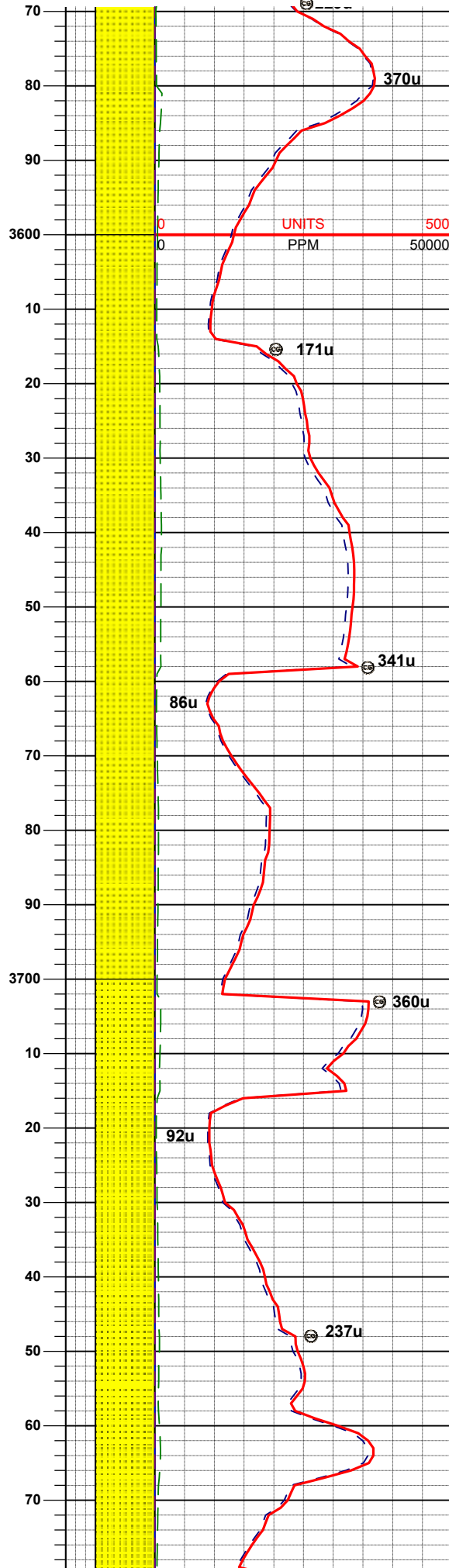
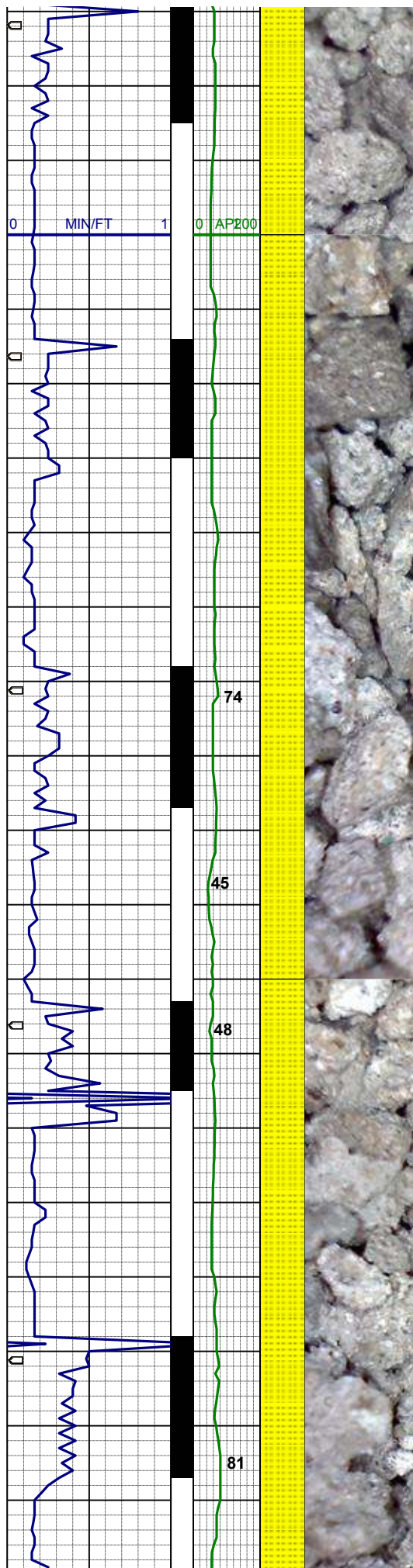
SS: wh-ltgy, trnsl-op, fgr-mgr, sbrndd-sbang, blkyl-sbblky, modsr, sft-firm, sl arg-sil mt, tr glauc
SHSLTST:lt-mgy-dkgy, vfgr-fgr,sbblky-sbplty, sft, arg mt, occ sdy ip, grdg-sltys

MD 3475'
INC 13.7°
AZI 60.0°
TVD 3459.4'

Depth: 3569'
WT 8.6
VIS 27
YP 1
pH 8.2
Cl- 850
Ca++ 700

SS: wh-ltgy, trnsl-op, fgr-mgr, sbrndd-sbang, blkyl-sbblky, modsr, sft-firm, sl arg-sil mt, tr glauc, tr sltysh-shyss

MD 3565'
INC 14.3°
AZI 55.4°
TVD 3546.7'



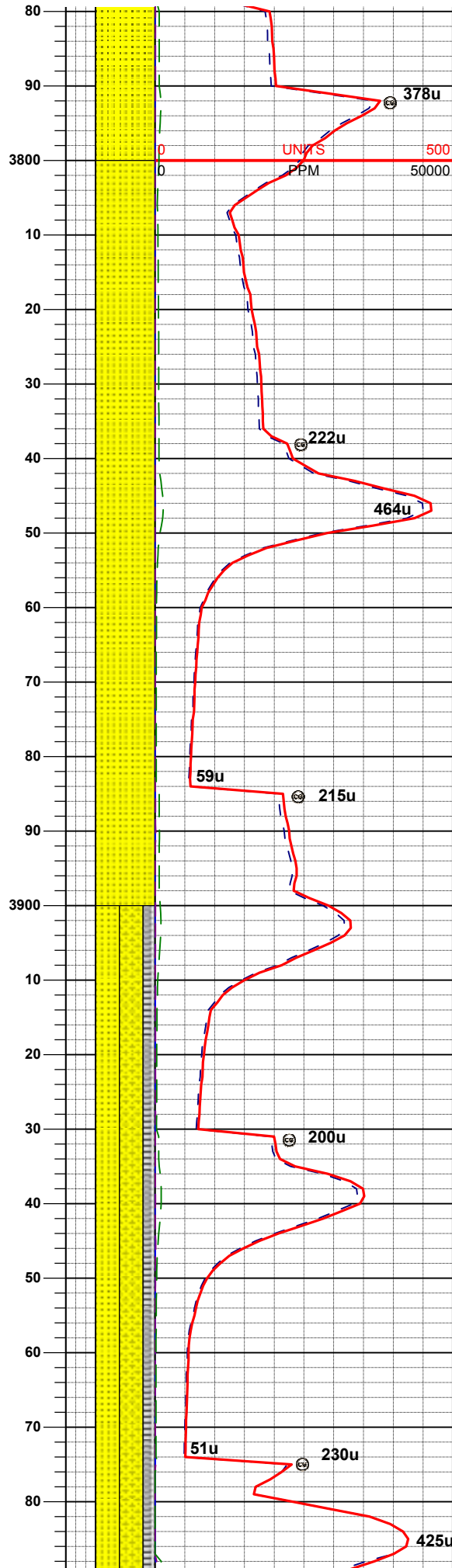
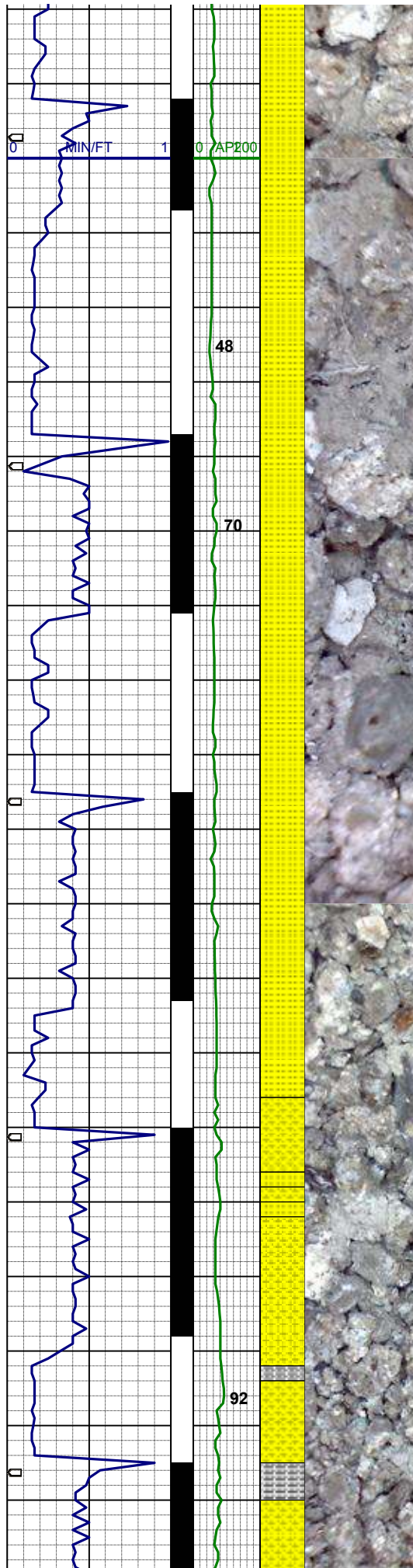
SS: wh- mgy- gybrn, clr- trnsl, f- mgr,
sbrnnd- sbang, mod srt, sft-mfirrn, fri,
p cmt, arg-sil mtz, occ glauc

MD 3655'
INC 15.1°
AZI 51.0°
TVD 3633.8'

WT 8.5 / VIS 31

MD 3745'
INC 14.4°
AZI 48.0°
TVD 3720.8'

SS: wh- mgy- gybrn, clr- trnsl, f- mgr,
sbrnnd- sbang, mod srt, sft-mfirrn, fri,
p cmt, arg-sil mtz

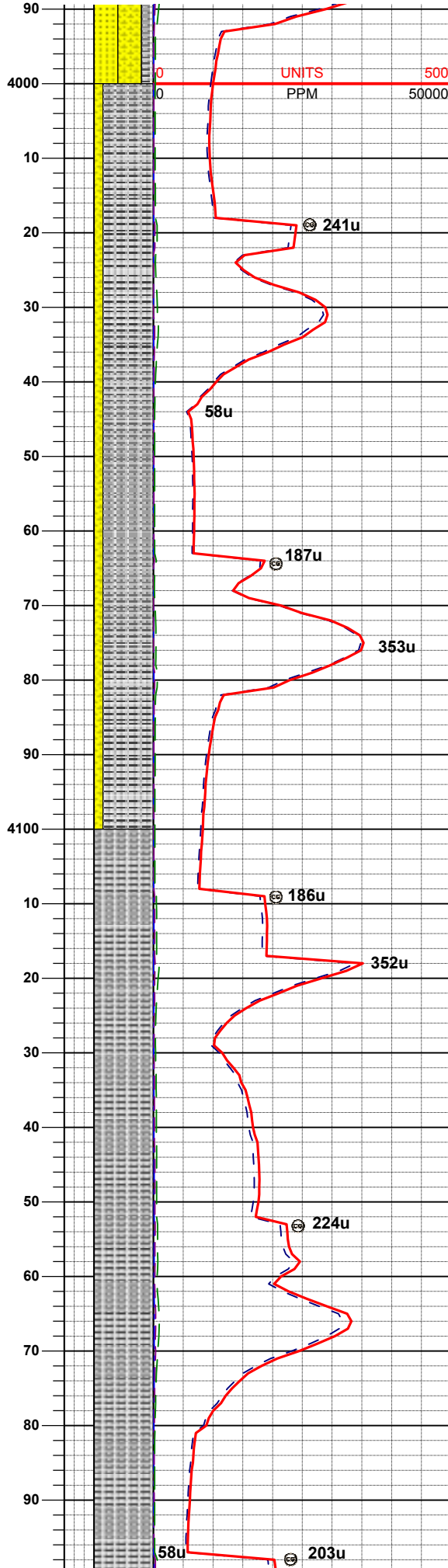
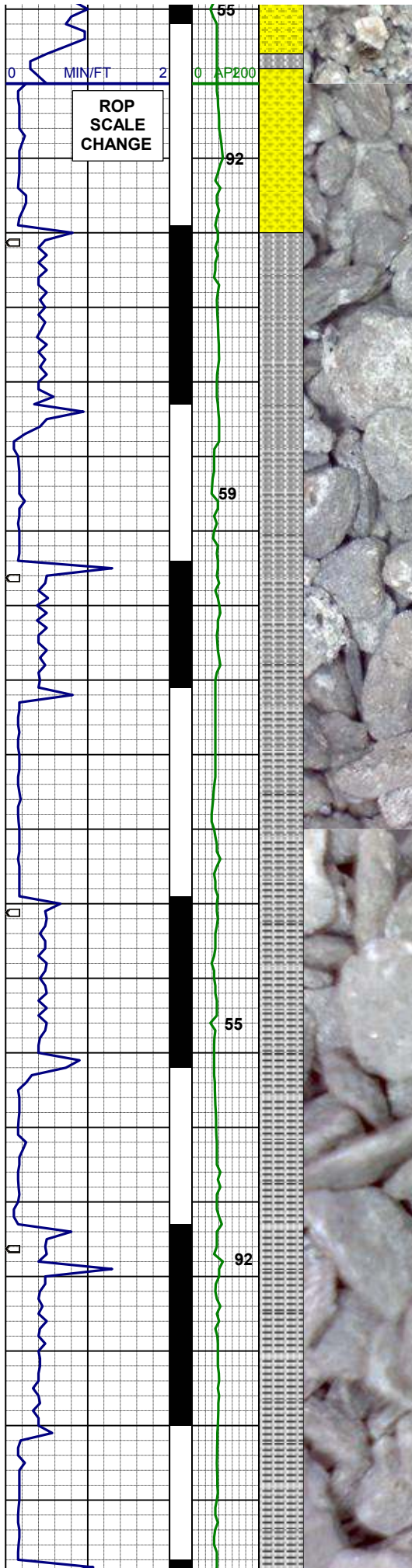


MD 3835'
INC 13.1°
AZI 43.1°
TVD 3808.2'

SS: wh- mgy- gybrn, clr- trnsl, f- mgr, sbrndd- sbang, mod srt, sft-mfirm, fri, p cmt, arg-sil mtx

MD 3925'
INC 11.1°
AZI 42.2°
TVD 3896.2'

SS: wh- mgy- gybrn, clr- trnsl, f- mgr, sbrndd- sbang, mod srt, sft-mfirm, fri, p cmt, arg-sil mtx, occ glau
SHYSS: mgy, trnsl -op, vf- fgr, sbblky- sbplty, psrt, sft- sl firm, arg mtx, sl calc, slty, occ pyr, grdg- sltysh



MD 4015'
INC 8.8°
AZI 39.9°
TVD 3984.9'

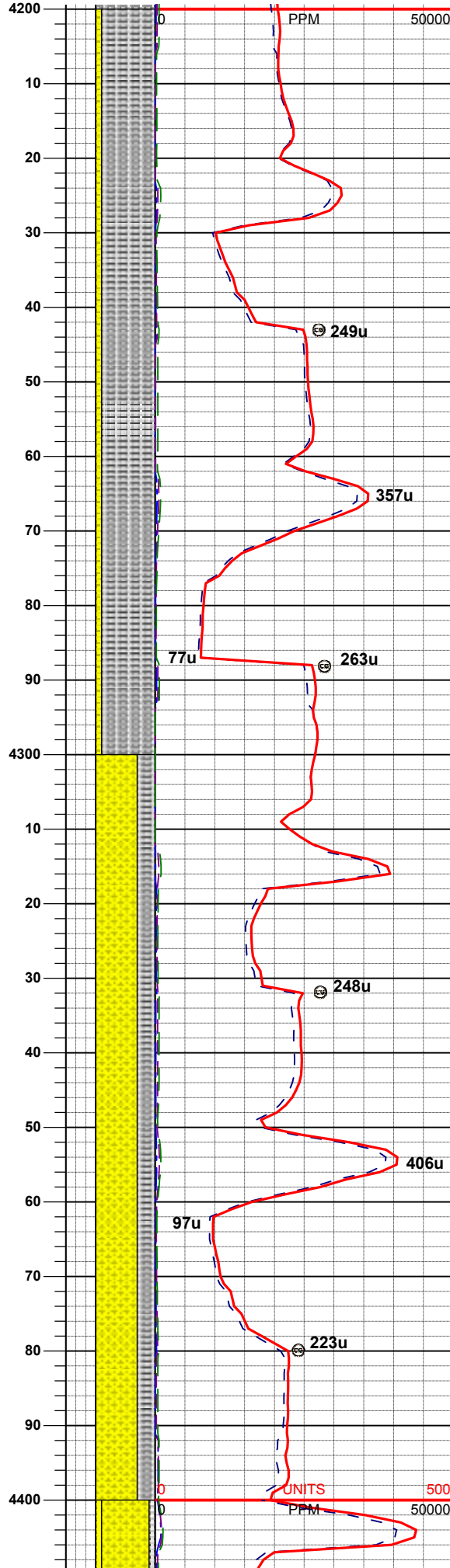
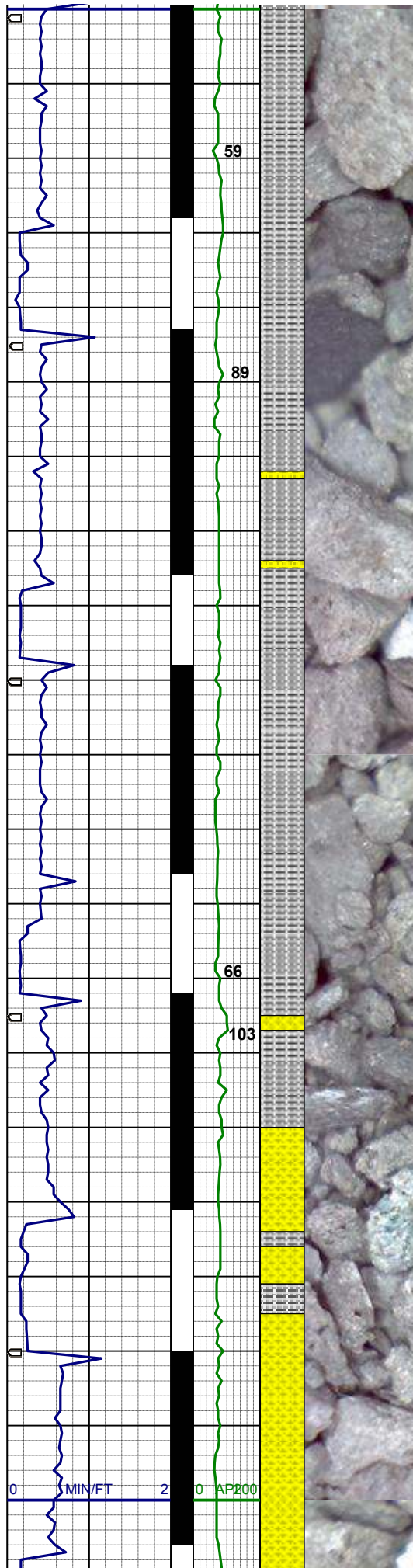
SLTYSH: mgy- gybrn, sft- mod firm,
sbrndd- sbply, occ sbbkly, gt tex, sdy
ip, sl calc, occ pyr, grdg- shyss

MD 4105'
INC 7.0°
AZI 36.2°
TVD 4074.0'

SLTYSH: mgy- gybrn, sft- mod firm,
sbrndd- sbply, occ sbbkly, gt tex, sdy
ip, sl calc, occ pyr, grdg- shyss

WT 8.4 / VIS 29

MD 4194'
INC 6.2°
AZI 22.7°
TVD 4162.4'



PPM 50000

SLTYSH: lt- mgy, sft- mod firm, sbrndd- sbplty, occ sbbkly, gt tex, sdy ip, sl calc, tr pyr, tr fos frag, grdg-shyss

MD 4284'
INC 4.0°
AZI 8.3°
TVD 4252.1'

WT 8.4 / VIS 28

249u

357u

77u 263u

248u

406u

97u

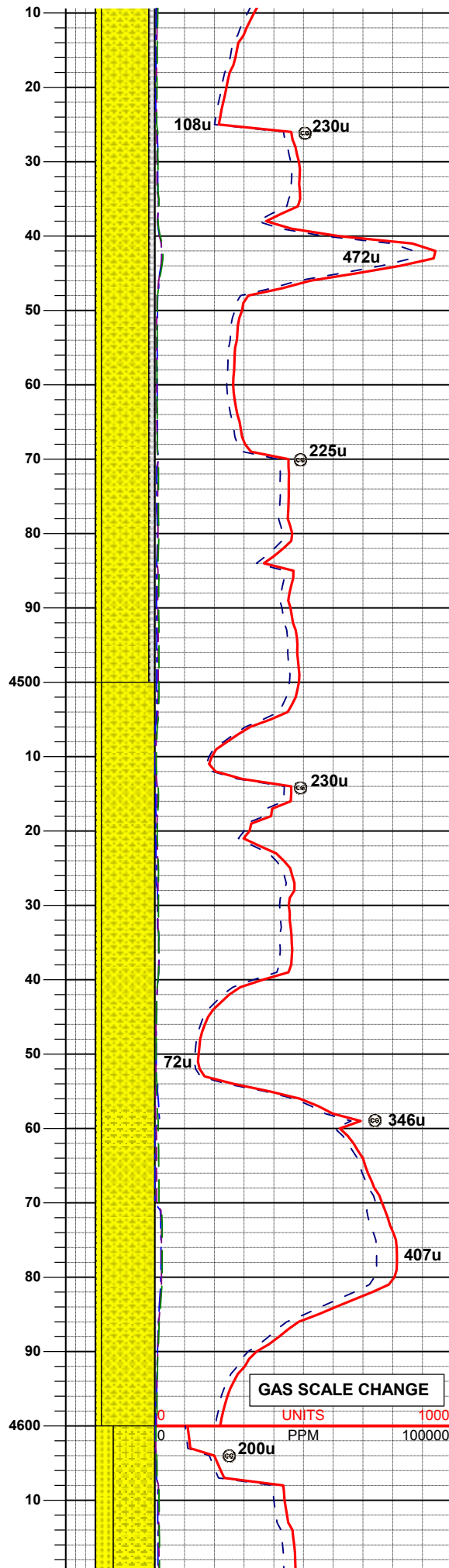
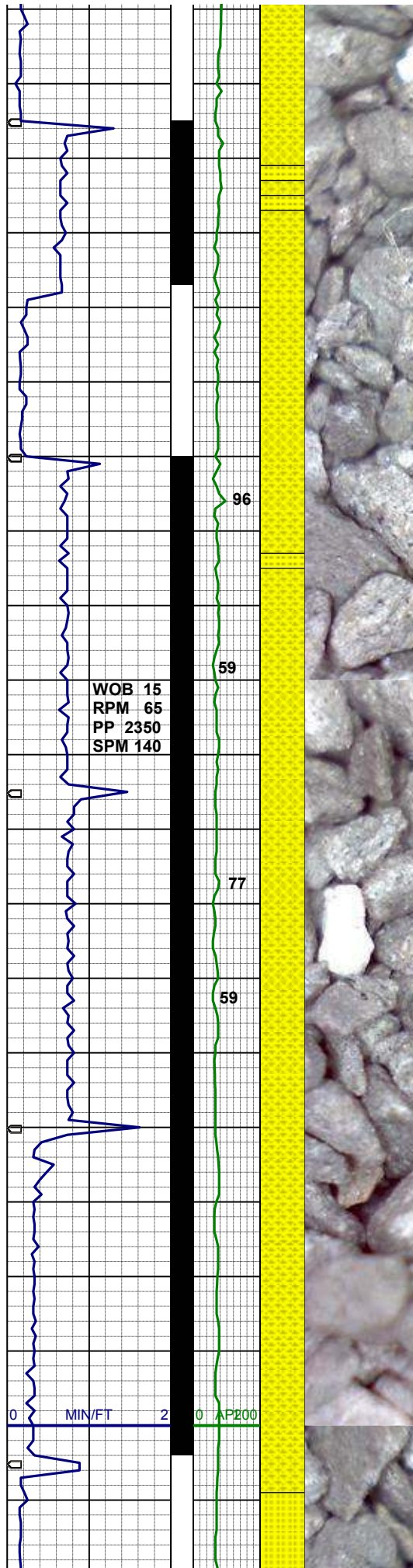
223u

UNITS 500

PPM 50000

SLTYSS: lt- mgy, trns- op, fgr, sbbkly-sbplty, mod srt, sft- sl firm, arg mtz, sl calc, slty, grdg- sltysh, occ wh cl- trns mgr ss w/ glau

MD 4374'
INC 3.0°
AZI 359.8°
TVD 4341.9'



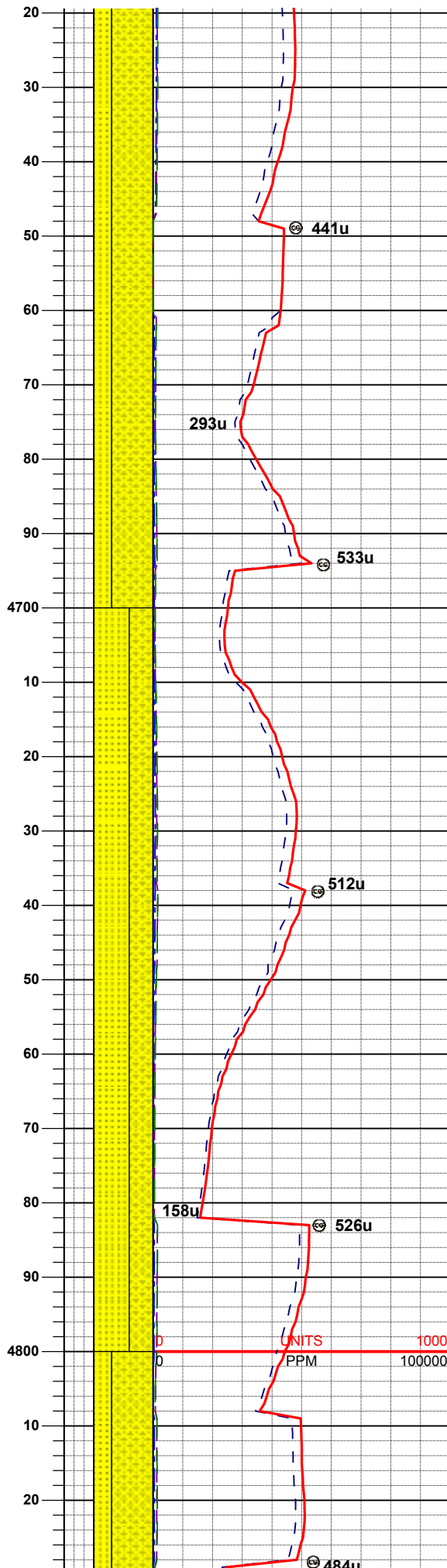
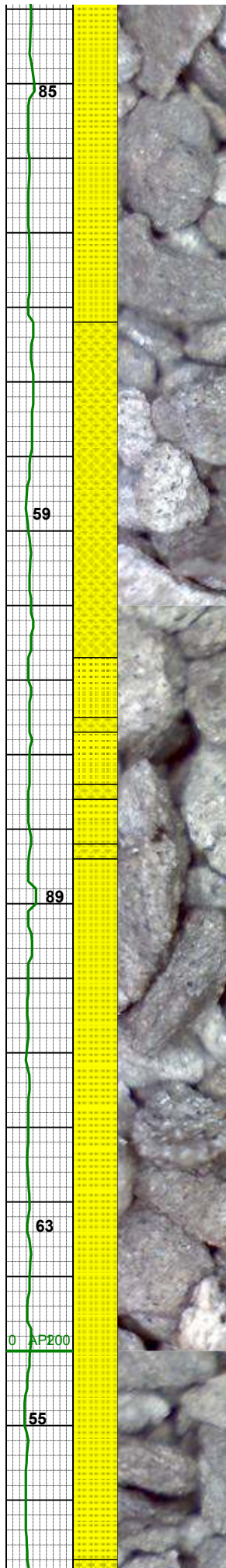
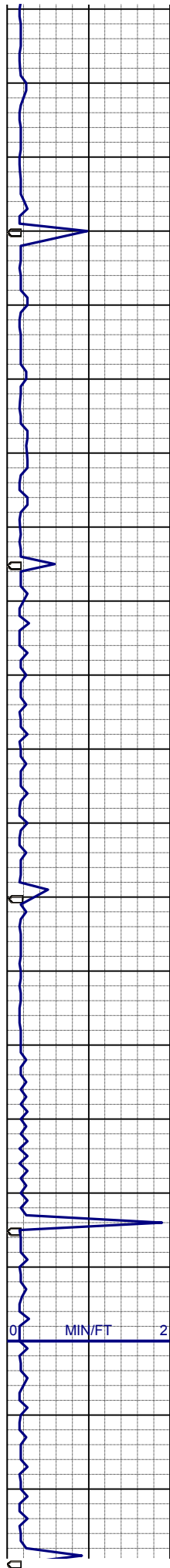
SHYSS: lt- mgy, trnsl -op, fgr, sbblky-
sbplty, mod srt, sft- sl firm, arg mtx, sl
calc, slty, grdg- sltysh
SS: wh- mgy, clr- trnsl, f- mgr, sbblky-
sbang, p- mod srt, sft-mfirrm, fri, p
cmt, arg-sil mtx

WT 8.4 / VIS 29

MD 4464'
INC 2.4°
AZI 348.9°
TVD 4431.8'

SHYSS: lt- mgy, trnsl -op, fgr, sbblky-
sbplty, mod srt, sft- sl firm, arg mtx, sl
calc, slty, grdg- sltysh
SS: wh- mgy, clr- trnsl, f- mgr, sbblky-
sbang, p- mod srt, sft-mfirrm, fri, p
cmt, arg-sil mtx

MD 4554'
INC 1.4°
AZI 341.9°
TVD 4521.7'



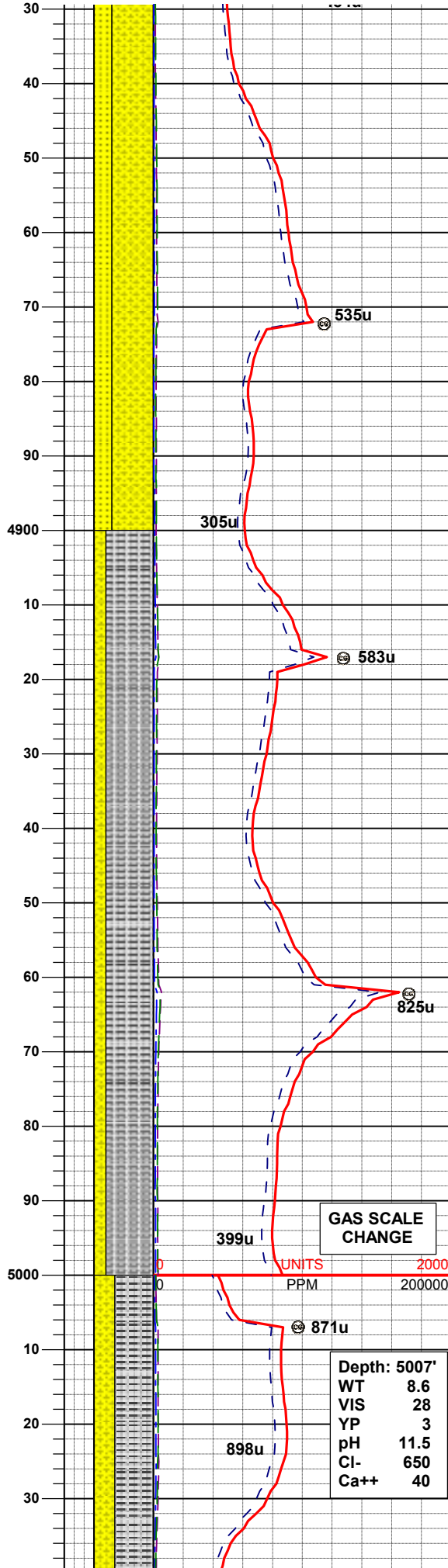
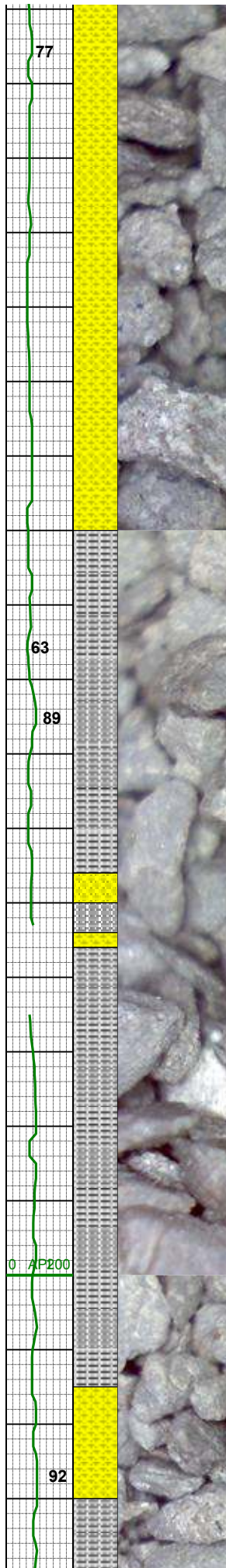
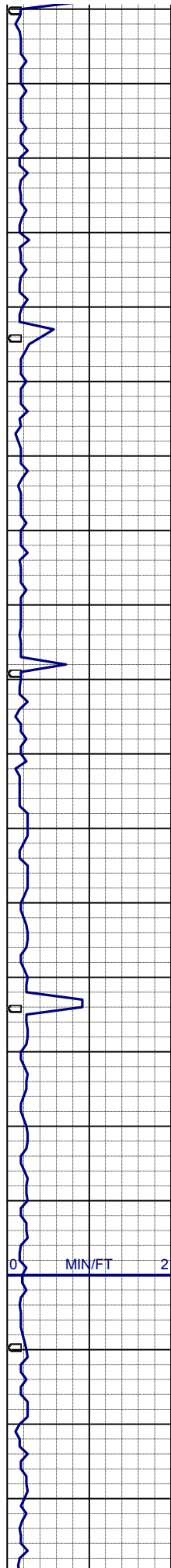
MD 4644'
INC 1.3°
AZI 0.0°
TVD 4611.7'

SHYSS: lt- mgy, trnsl -op, fgr, sbbiky-
sbply, mod srt, sft- sl firm, arg mtx, sl
calc, slty, grdg- sltysh
SS: wh- mgy, clr- trnsl, f- mgr, sbbiky-
sbang, p- mod srt, sft-mfirm, fri, p
cmt, arg-sil mtx, tr glau

MD 4734'
INC 1.2°
AZI 27.6°
TVD 4701.7'

SS: wh- mgy, clr- trnsl, f- mgr, sbbiky-
sbang, p- mod srt, sft-mfirm, fri, p
cmt, arg-sil mtx, tr glau
SHYSS: lt- mgy, trnsl -op, fgr, sbbiky-
sbply, mod srt, sft- sl firm, arg mtx, sl
calc, slty, grdg- sltysh

MD 4823'
INC 1.4°
AZI 32.9°
TVD 4790.7'



SHYSS: lt- mgy, trnsl -op, fgr, sbblky-
sbplty, mod srt, sft- sl firm, arg mtx, sl
calc, slty, grdg- sltysh
SS: wh- mgy, clr- trnsl, f- mgr, sbblky-
sbang, p- mod srt, sft-mfirm, fri, p
cmt, arg-sil mtx, tr glau

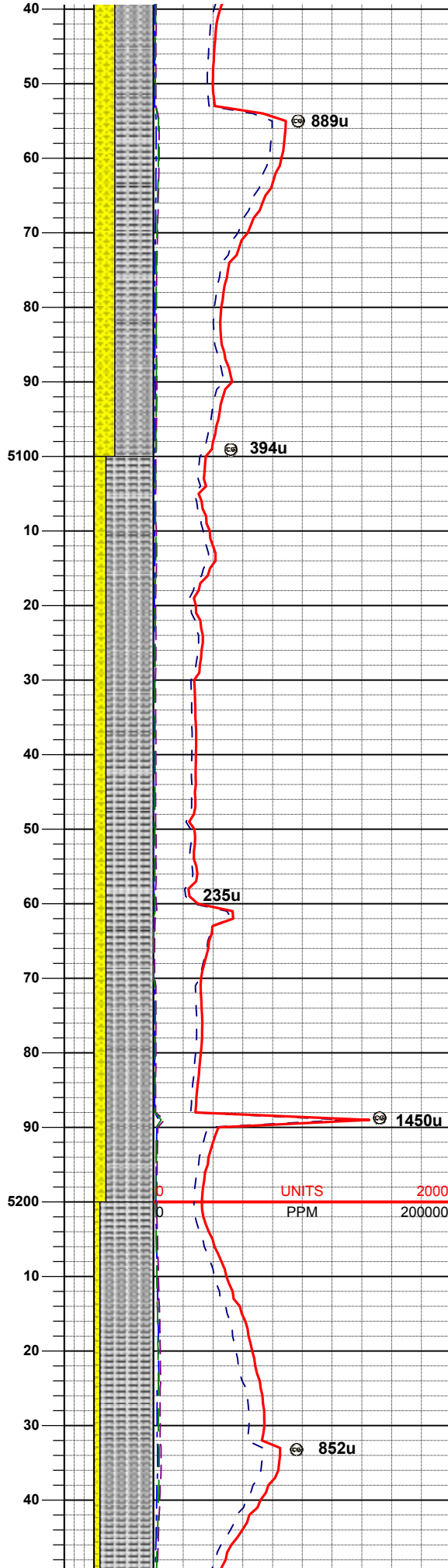
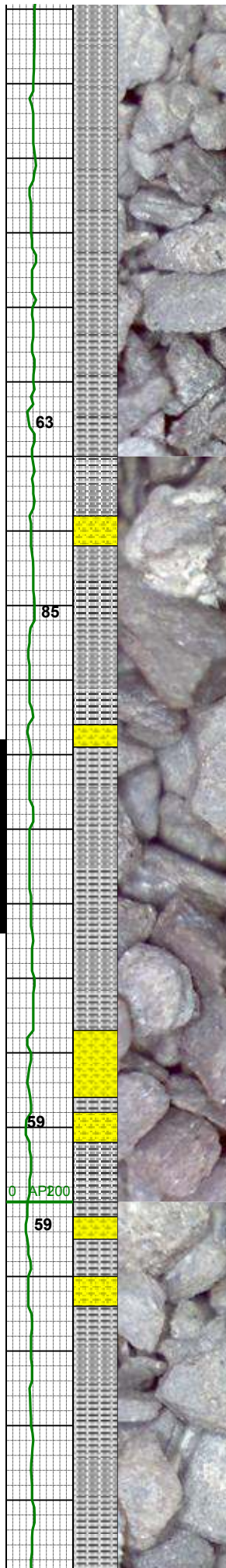
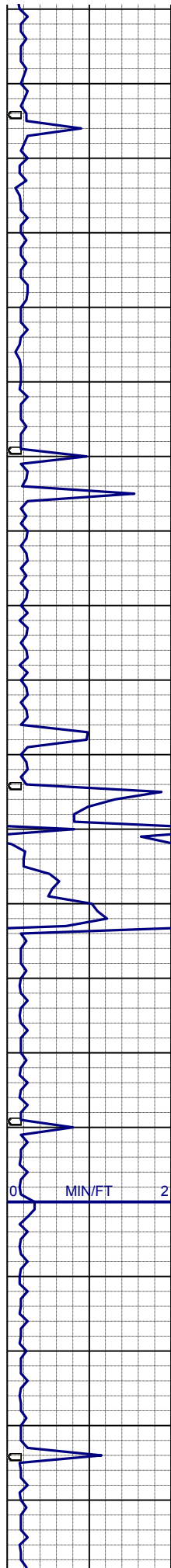
MD 4913'
INC 1.2°
AZI 59.4°
TVD 4880.7'

SLTYSH: lt- mgy- buf, sft- mod firm,
sbang- sbplty, gt tex, sdy ip, sl calc,
occ calc frag, tr fos frag, grdg- shyss

MD 5003'
INC 1.2°
AZI 68.2°
TVD 4970.3'

GAS SCALE
CHANGE

Depth: 5007'
WT 8.6
VIS 28
YP 3
pH 11.5
Cl- 650
Ca++ 40



SLTYSH: lt- mgy- buf, sft- mod firm,
sbang- sbpity, gt tex, sdy ip, sl calc,
occ calc frag, occ pyr, tr fos frag, grdg
- shyss

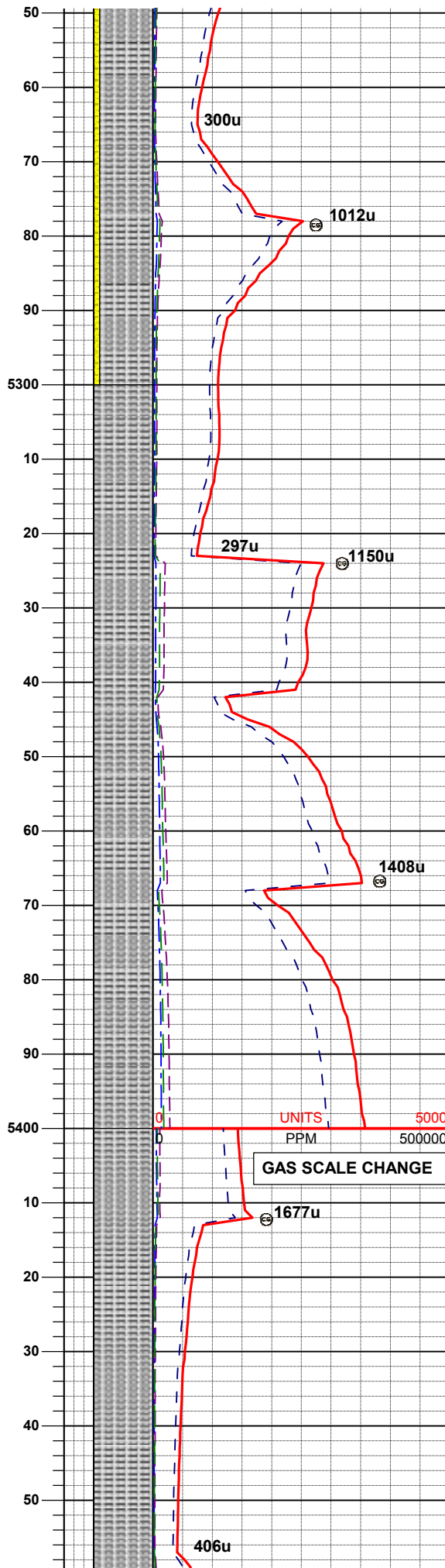
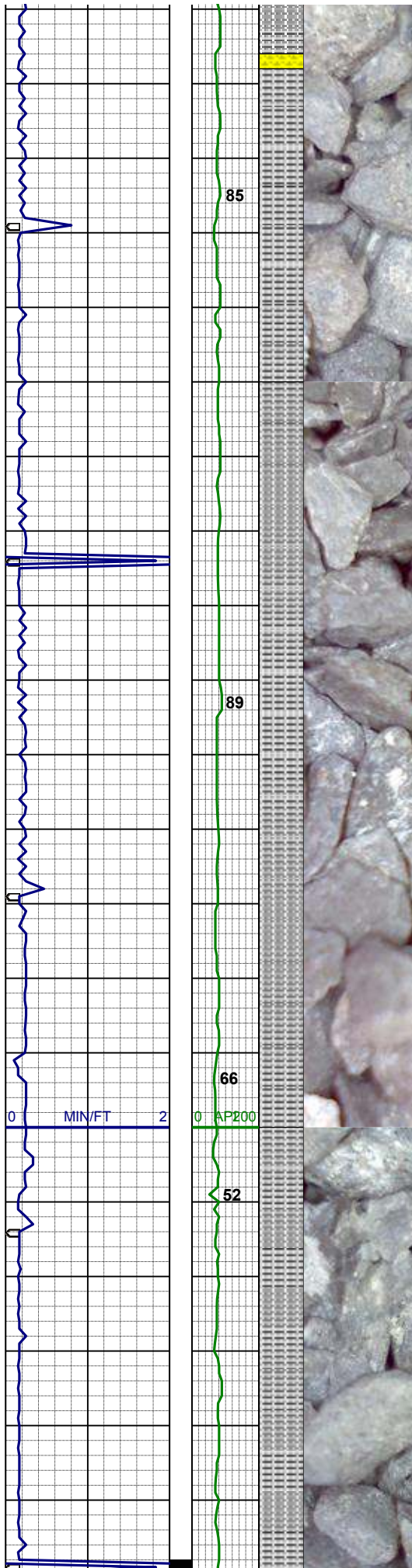
MD 5093'
INC 1.4°
AZI 68.0°
TVD 5060.6'

SLTYSH: lt- mgy- buf, sft- mod firm,
sbang- sbpity, gt tex, sdy ip, sl calc,
occ calc frag, occ pyr, tr fos frag, grdg
- shyss

WT 8.9 / VIS 31

MD 5183'
INC 0.7°
AZI 81.8°
TVD 5150.6'

SLTYSH: lt- mgy- buf, sft- mod firm,
sbang- sbpity, gt tex, sdy ip, sl calc,



occ calc frag, occ pyr, tr ros frag, grag
- shyss

MD 5273'
INC 0.1°
AZI 257.5°
TVD 5240.6'

SLTYSH: lt-dkgy, sft- mod firm, sbplty
-plty, occ sbbkly, gt tex, tr sdy ip, sl
calc, sl mica, tr fos frag, tr gla, occ
shysltst

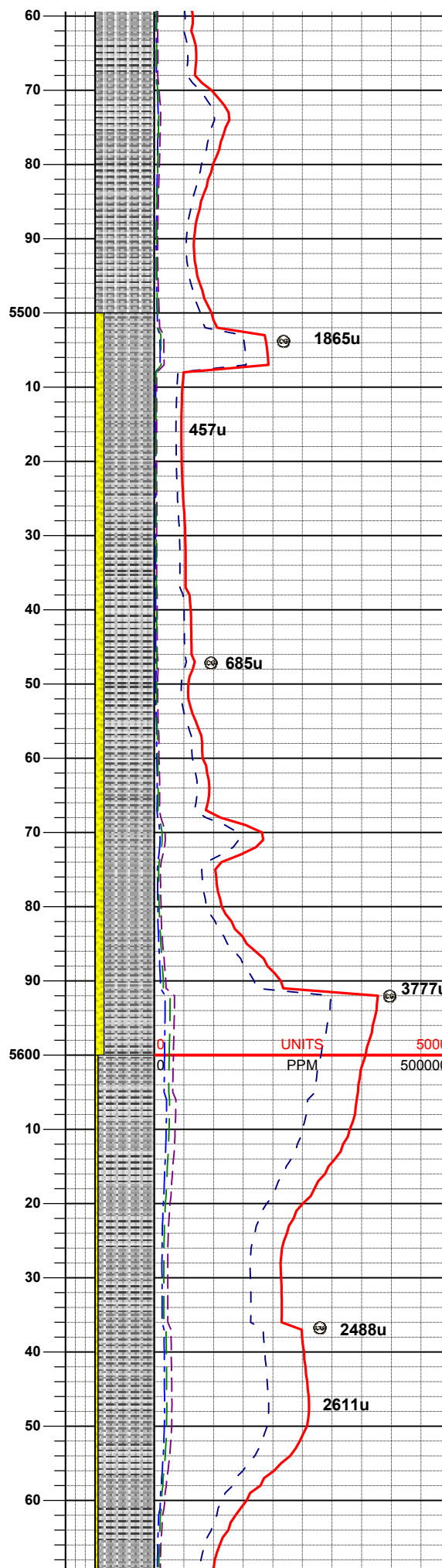
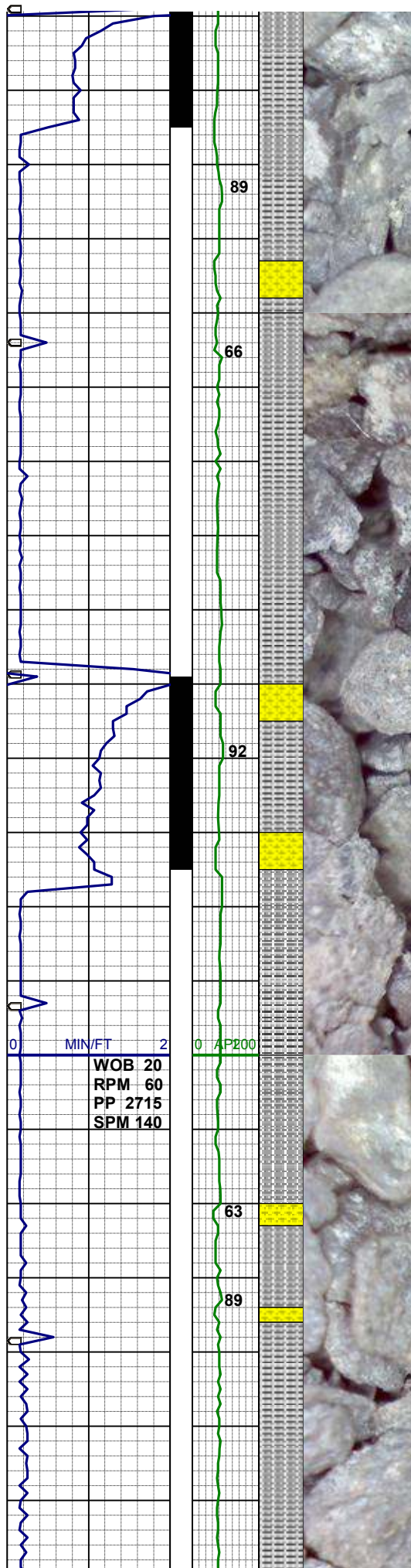
MD 5362'
INC 1.1°
AZI 224.3°
TVD 5329.6'

GAS SCALE CHANGE

WT 8.9 / VIS 37

SLTYSH: lt-dkgy, sft- mod firm, sbplty
-plty, occ sbbkly, gt tex, tr sdy ip, sl
calc, sl mica, tr fos frag, tr gla, occ
shysltst

MD 5452'
INC 1.8°
AZI 232.0°
TVD 5419.5'



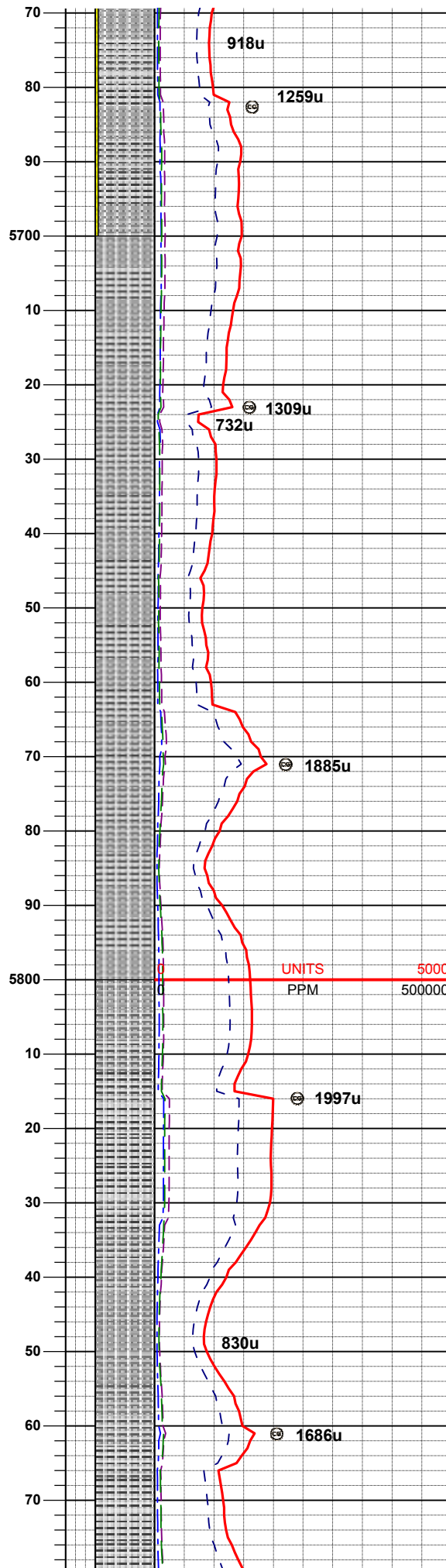
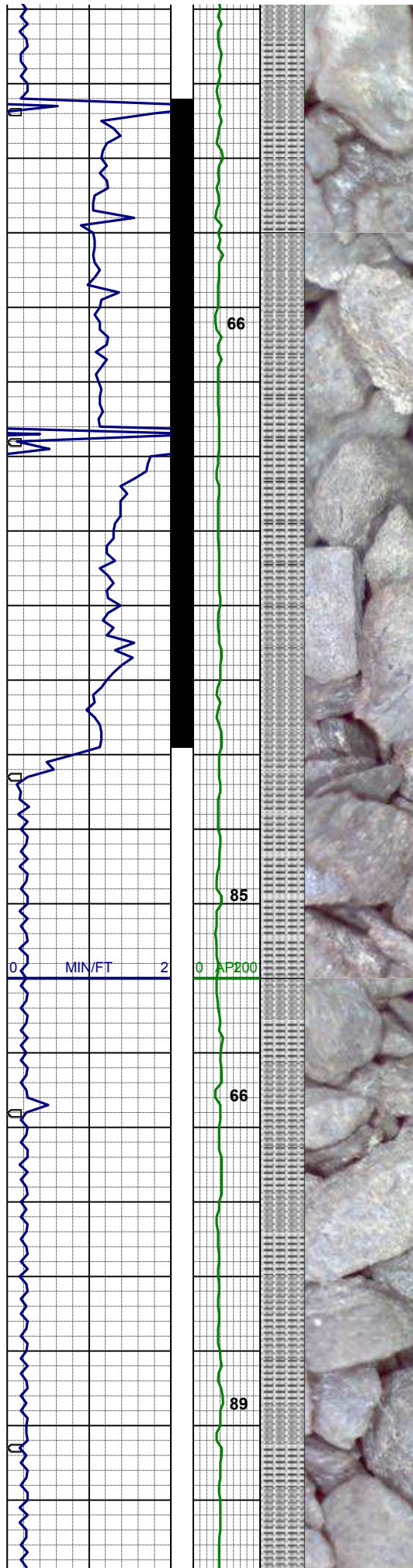
WT 8.9 / VIS 36

MD 5542'
INC 1.9°
AZI 233.6°
TVD 5509.5'

SLTYSH: lt-mgy, sft- mod firm, sbplty-
plty, occ sbbkly, slty tex, sdy ip, sl
calc, sl mica, tr fos frag, tr gla, grdg-
shyss

MD 5632'
INC 2.2°
AZI 236.8°
TVD 5599.5'

SLTYSH: lt-mgy, sft- mod firm, sbplty-
plty, occ sbbkly, slty tex, sdy ip, sl
calc, sl mica, tr fos frag, tr gla, grdg-
shyss



WT 9.8 / VIS 45

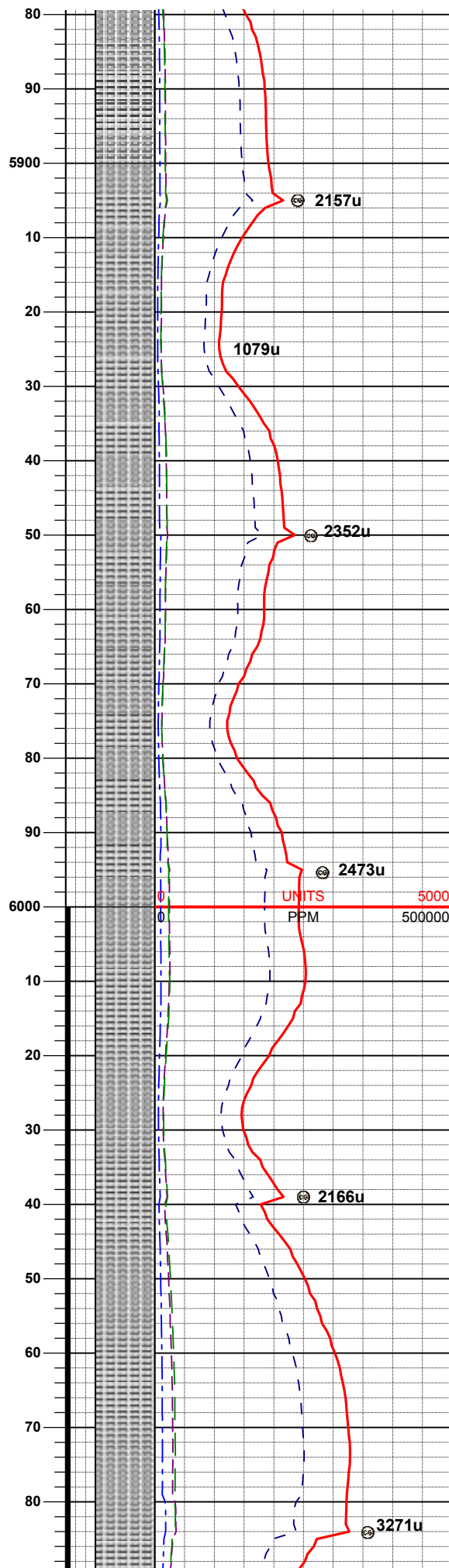
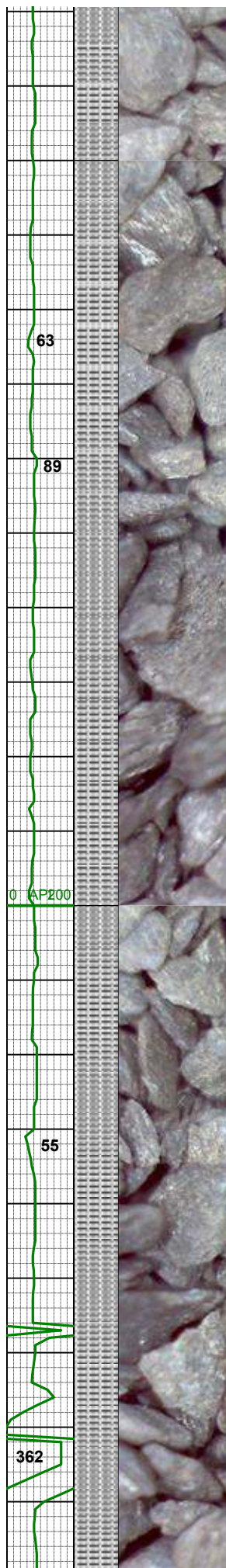
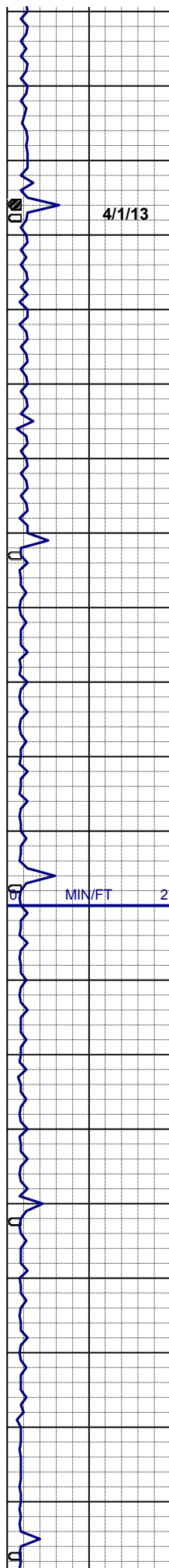
MD 5722'
INC 1.4°
AZI 262.1°
TVD 5689.4'

SLTYSH: lt-mgy, tr dkgy, sft- mod
firm, sbplty-plty, occ sbbiky, slty tex,
sdy ip, sl calc, sl mica, tr fos frag

MD 5811'
INC 0.4°
AZI 345.1°
TVD 5778.4'

WT 9.4 / VIS 46

SLTYSH: lt-mgy, tr dkgy, sft- mod
firm, sbplty-plty, occ sbbiky, slty tex,
sdy ip, sl calc, sl mica, tr shyss



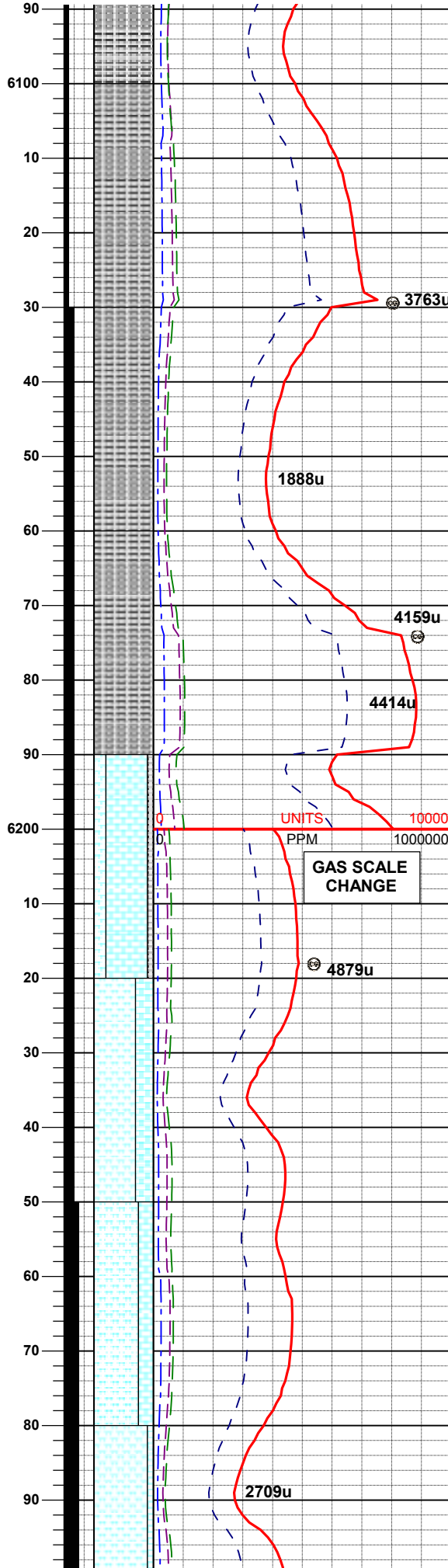
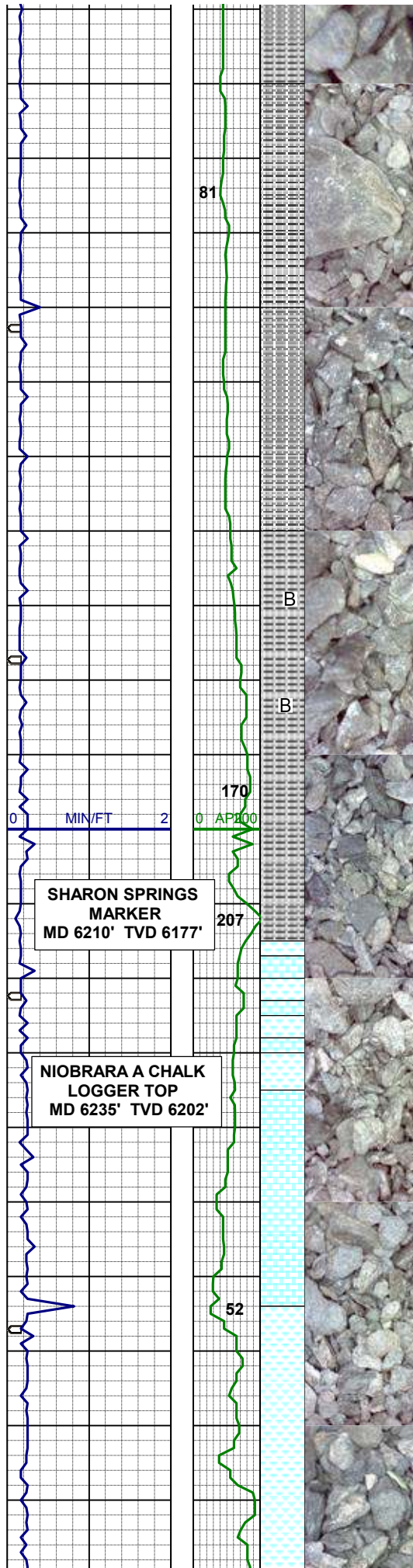
MD	5901'
INC	0.2°
AZI	30.4°
TVD	5868.4'

SLTYSH: lt-mgy, tr dkgy, sft- mod
firm, sbplty-plty, occ sbbiky, slty tex,
sdy ip, sl calc, sl mica, tr shyss

MD	5991'
INC	0.3°
AZI	20.2°
TVD	5958.4'

SLTYSH: lt-mgy, tr dkgy, sft- mod
firm, sbplty-plty, occ sbblky, slty tex,
sdy ip, sl mica, tr shyss

MD	6081'
INC	0.3°
AZI	29.0°
TVD	6048.4'



BEGIN 30' SAMPLES

SLTYSH: lt-mgy, tr dkgy, sft- mod firm, sbplty-plty, occ sbbkly, slty tex, sdy ip, sl mica, tr shyss

SLTYSH: lt-mgy, tr dkgy, sft- mod firm, sbplty-plty, occ sbbkly, slty tex, sdy ip, sl mica, tr shyss

MD 6171'
INC 0.5°
AZI 68.9°
TVD 6138.4'

SLTYSH: lt-mgy, tr dkgy, sft- mod firm, sbplty-plty, occ sbbkly, slty tex, sdy ip, sl calc, scat bent

WT 9.5 / VIS 50

CHK: lt- mgy, mot, sft-sl firm, arg, sbbkly-sbplty, rthy lstr, stri, tr pyr, vcalc

MRL: m-dkgy, sft- mfirm, sbbkly-sbplty, occ plty, rthy, tr stri, v arg, org/calc mtx, mod calc

SLTYSH: m-dkgy, sft- mod firm, sbplty-plty, occ sbbkly, slty tex, sdy ip, sl calc

MRL: m-dkgy, sft- mfirm, sbbkly-sbplty, occ plty, rthy, tr stri, v arg, org/calc mtx, mod calc

CHK: lt- mgy, mot, sft-sl firm, arg, sbbkly-sbplty, rthy lstr, stri, tr pyr, vcalc

MD 6261'
INC 0.7°
AZI 108.6°
TVD 6228.4'

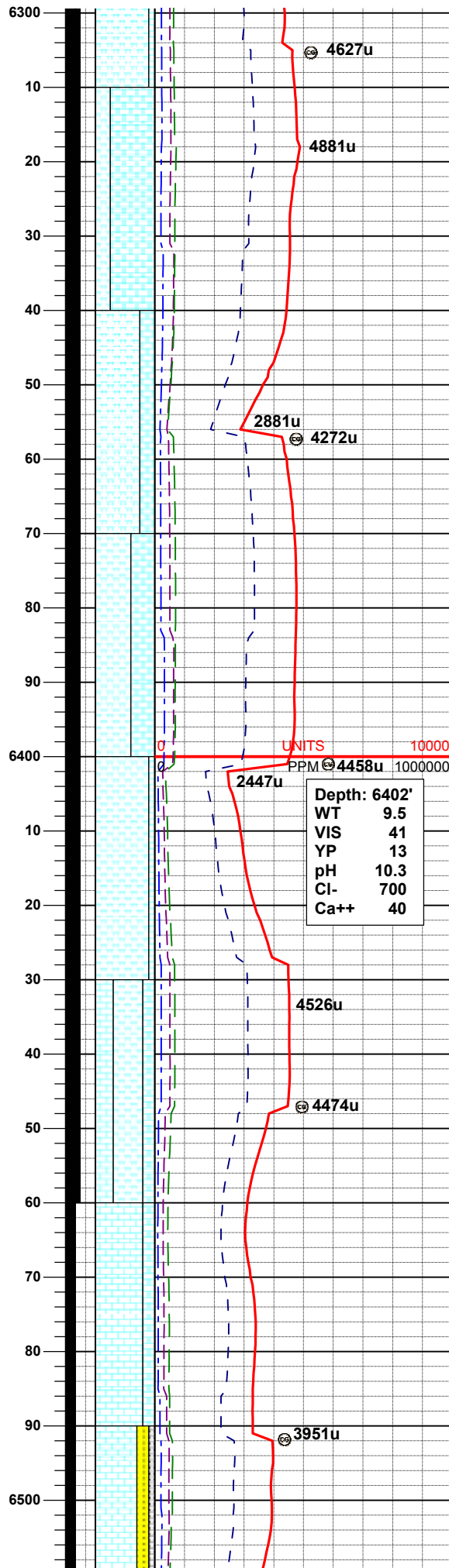
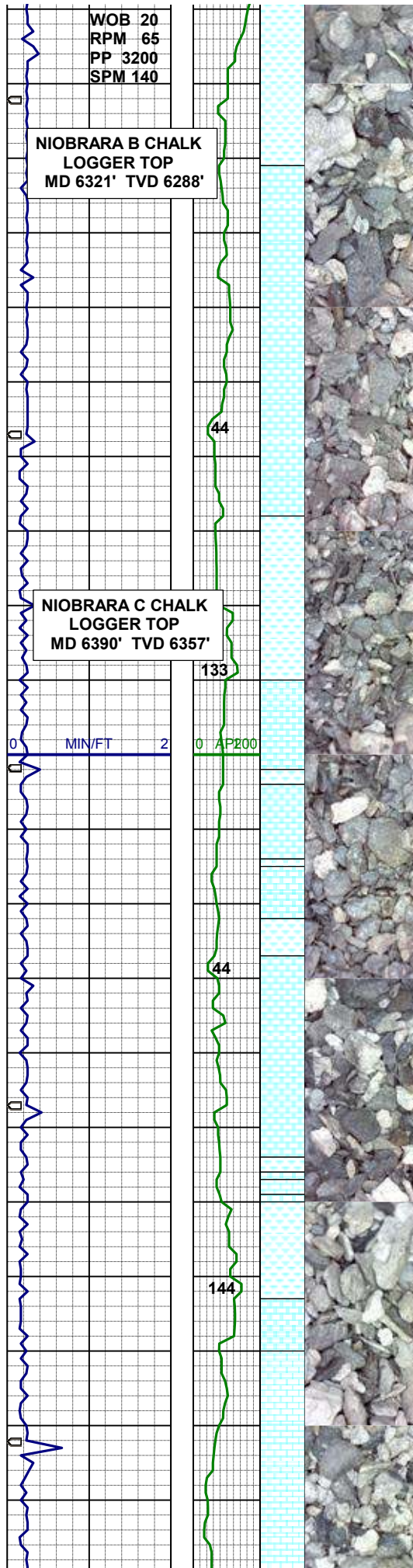
MRL: m-dkgy, sft- mfirm, sbbkly-sbplty, occ plty, rthy, tr stri, v arg, org/calc mtx, tr bent, tr pyr, tr fos, mod calc

CHK: lt- mgy, mot, sft-sl firm, arg, sbbkly-sbplty, rthy lstr, stri, tr pyr, vcalc

WT 9.5 / VIS 47

MRL: m-dkgy, sft- mfirm, sbbkly-sbplty, occ plty, rthy, tr stri, v arg, org/calc mtx, tr bent, tr pyr, tr fos, mod calc

CHK: lt- mgy, mot, sft-sl firm, arg, sbbkly-sbplty, rthy lstr, stri, tr pyr, vcalc



SBBLKY SBPLY, RTHY LSTR, STRI, TR PYR, VCALC

CHK: lt- mgy, mot, sft-sl firm, arg, sbblky-sbply, rthy lstr, stri, tr pyr, vcalc, tr bent, tr pyr, tr fos

MRL: m-dkgy, sft- mfir, sbblky-sbply, occ ply, rthy, tr stri, v arg, org/calc mt, mod calc

MD 6350'
INC 0.6°
AZI 96.7°
TVD 6317.4'

MRL: m-dkgy, sft- mfir, sbblky-sbply, occ ply, rthy, tr stri, v arg, org/calc mt, tr bent, tr pyr, tr fos, mod calc

CHK: lt- mgy, mot, sft-sl firm, arg, sbblky-sbply, rthy lstr, stri, tr pyr, vcalc,

MRL: m-dkgy, sft- mfir, sbblky-sbply, occ ply, rthy, tr stri, v arg, org/calc mt, tr bent, tr pyr, tr fos, mod calc

CHK: lt- mgy, mot, sft-sl firm, arg, sbblky-sbply, rthy lstr, stri, tr pyr, vcalc,

MRL: m-dkgy, sft- mfir, sbblky-sbply, occ ply, rthy, tr stri, v arg, org/calc mt, tr bent, tr pyr, tr fos, mod calc

CHK: lt- mgy, mot, sft-sl firm, arg, sbblky-sbply, rthy lstr, stri, tr pyr, vcalc

MD 6440'
INC 0.4°
AZI 99.7°
TVD 6407.4'

MRL: m-dkgy, sft- mfir, sbblky-sbply, occ ply, rthy, tr stri, v arg, org/calc mt, scat bent, vcalc

CHK: lt- mgy, mot, sft-sl firm, arg, sbblky-sbply, rthy, vcalc

LS: wh-crm, mod sft- firm, pred firm, sbblky, rthy- wxy tex, arg ip, mcroxln, occ fos frag, cln fizz, bri blgn flr

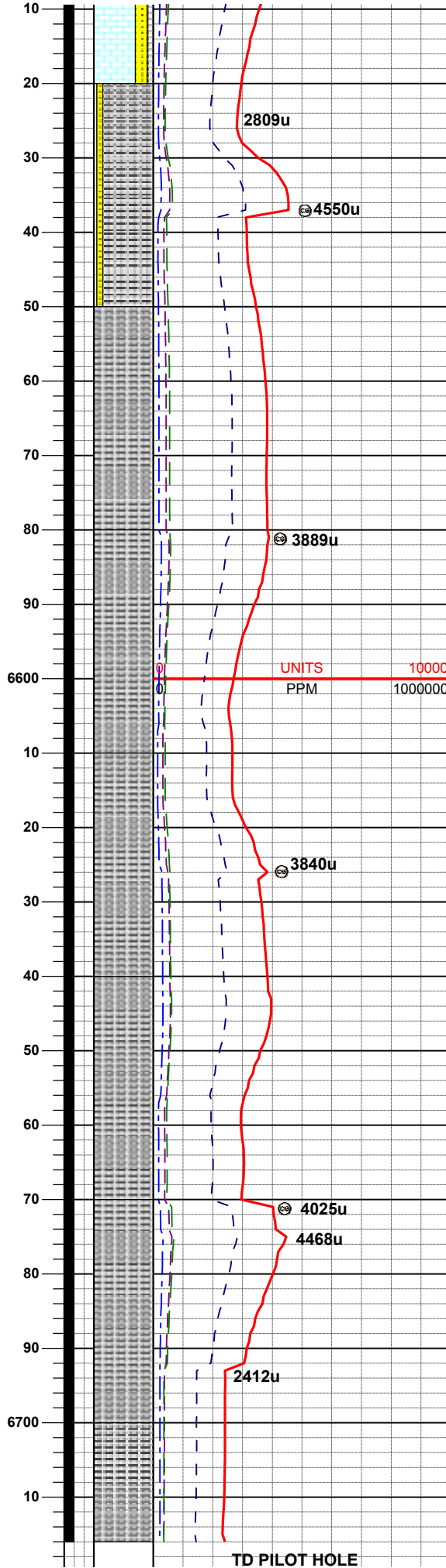
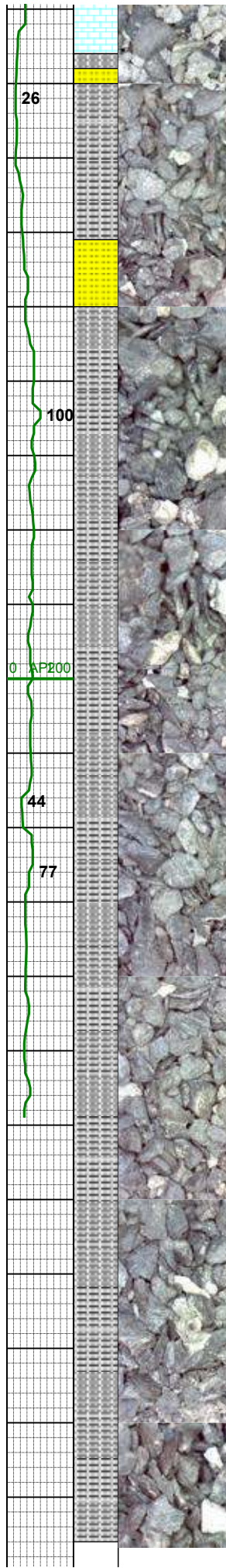
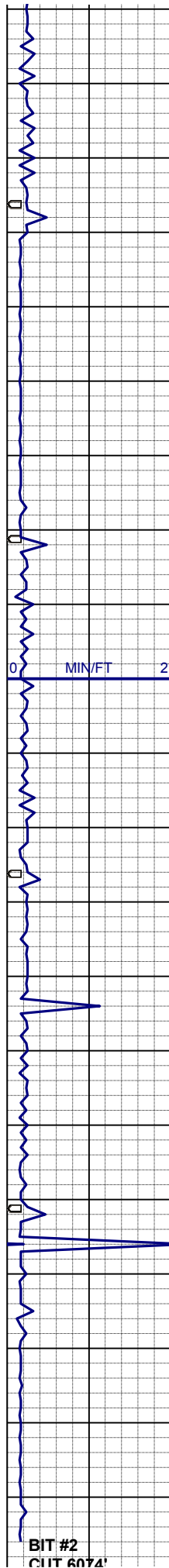
LS: wh-crm, mod sft- firm, pred firm, sbblky, rthy- wxy tex, arg ip, mcroxln, occ fos frag, cln fizz, bri blgn flr

CHK: lt- mgy, mot, sft-sl firm, arg, sbblky-sbply, rthy tex, vcalc, occ mrl

LS: wh-crm, mod sft- firm, pred firm, sbblky, rthy- wxy tex, arg ip, mcroxln, occ fos frag, cln fizz, bri blgn flr

SS: mgy, clr- trns, occ op, f- mgr, sbblky, mod srt, mod sft, p cmt, calc mt, tr pyr

SLTYSH: dkgy- blk, firm- vfir, sbply



-plty, slty tex, mod calc, tr mrl

MD 6530'
INC 0.4°
AZI 55.2°
TVD 6497.4'

SLTYSH: dkgy- blk, occ lt- mgy, firm- vfirm, sbplty-plty, slty tex, mod calc, sdy ip, grdng- shyss, tr mrl, occ ls SS: mgy, clr- trns, occ op, f- mgr, sbblky, mod srt, mod sft, p cmt, calc mtz

SLTYSH: dkgy, occ mgy, firm- vfirm, sbplty-plty, slty tex, mod calc, sdy ip, grdng- shyss, tr pyr, occ ls (3%), 1% ss

SLTYSH: dkgy, occ mgy, firm- vfirm, sbplty-plty, slty tex, mod calc, sdy ip, grdng- shyss, tr pyr, occ ls, tr ss

WT 9.5 / VIS 46

MD 6620'
INC 0.8°
AZI 24.8°
TVD 6587.4'

SLTYSH: lt- mgy, firm- vfirm, sbplty-plty, slty tex, mod calc, sdy ip, grdng- shyss, tr pyr, tr ls, tr ss

SLTYSH: lt- mgy, firm- vfirm, sbplty-plty, slty tex, mod calc, sdy ip, grdng- shyss, tr pyr, tr ls, tr ss

MD 6665'
INC 0.9°
AZI 40.3°
TVD 6632.4'

SLTYSH: lt- mgy, firm- vfirm, sbplty-plty, slty tex, mod calc, sdy ip, grdng- shyss, tr pyr, tr ls, tr ss

SLTYSH: lt- mgy, firm- vfirm, sbplty-plty, slty tex, mod calc, sdy ip, grdng- shyss, tr pyr, tr ls, tr ss

THANK YOU FOR CHOOSING
COLUMBINE LOGGING INC.

[illegible][illegible]

MD 6716' @ 0500 HRS
4/1/13

LOG CONTINUES ON FILE:
ble Federal LB33-78HN Lateral.lplot

[illegible]

COLUMBINE LOGGING, INC.