



The Well Watchers

Scale 1:240 (5"=100') Imperial

Well Name: CHESNEE #2
Location: Section 7 - Township 14 South - Range 44 West, 6th PM
Licence Number: 05 - 017 - 07748 - 00.00 Region: Cheyenne County, CO.
Spud Date: 31 May 2013 Drilling Completed: 9 June 2013
Surface Coordinates: 731' FNL & 636' FEL, NE/4

Bottom Hole
Coordinates:
Ground Elevation (ft): 4,286' K.B. Elevation (ft): 4,302'
Logged Interval (ft): 3,000' To: 5,604' Total Depth (ft): 5,604'
Formation: Shawnee -----> Mississippi
Type of Drilling Fluid: Chemical; Low Solids (non-dispersed)

Printed by MUD.LOG from WellSight Systems 1-800-447-1534 www.WellSight.com

OPERATOR

Company: PRONGHORN OPERATING, LLC.
Address: 8400 East Prentice Avenue, Suite 1000 POC Geologist:
Greenwood Village, Colorado Frank Rabbio
(303) 2200794

GEOLOGIST

Name: Curtis Covey
Company: COVEY - The Well Watchers
Address: 6548 Bedford Circle
Derby, Kansas 67037
Office: (316) 776 - 0367 Cell: (316) 217-4679

KB: 4,302'

FORMATION TOPS

GL: 4,286'

Formation	Rotary Sample Depth (Datum)	E-log Depth (Datum)
Anhydrite	3,091' (+1,211')	
B / Anhydrite	3,129' (+1,173')	
Neva	3,720' (+582')	
Foraker	3,791' (+511')	
Shawnee	4,125' (+177')	
Heebner Shale	4,309' (-7')	
Lansing	4,355' (-53')	
Marmaton	4,725' (-423')	
Cherokee Sh	4,860' (-558')	
Morrow	5,135' (-833')	
Keyes	5,250' (-948')	
Miss (St. Louis)	5,301' (-999')	
Spergen	5,373' (-1,071')	

RTD: 5,604' LTD: ATD: E-log is to rotary sample depth.

E - Loggers:
Allied Wireline - Brighton, CO.

2013

DAILY DRILLING STATUS -- MAY & JUNE

2013

17-1/2" Hole

31 May --- Spud @ 6:30pm.
Drill to 455'.
31 --- Run 13-3/8" casing (54#)
Set casing @ 422'.
Cemented w/ 375 sx
OWC (2% Gel + 3% CC).
[Consolidated]
Cement did circulate.
Plug down @ 3:45pm.
WOC.

12-1/4" Hole

1 June --- WOC.
7am @ 455'.
Under surface casing @ 9:15am.
Drilled to 765'.
2 --- 7am @ 765'. Dry drill. Gaining
returns with depth.
3 --- 7am @ 1,440'. Drill to 1,629'.
Run 8-3/8" casing. Set @ 1,665'.
Cemented with 100 sx 1.4
yield OWC. [Consolidated]
Plug down at noon.
WOC. Work on Rig.

7-7/8" Hole

4 June --- Under intermediate
casing @ 1am.
7am @ 1,738'.
5 --- 7am @ 2,906'.
6 --- 7am @ 3,788'.
7 --- 7am @ 4,386'.
8 --- 7am @ 5,050'.
Lost Returns @ 5,475'.
Drill to 5,529'. Trip to
1,537'. Mix Mud.
9 --- 7am @ 1,537'. (Inside Casing.)
(Drill Depth 5,529').
Mix Mud.
Resumed Drilling @ 12:20pm.
RTD @ 1:35pm.

E-Log (Allied Wireline)

HOLE DEVIATION (455' - 5,604')

DEPTH / TVD	INCLINATION	AZIMUTH	NORTH	SOUTH	EAST	WEST	DOGLEG deg/100'
455' /	--- 2.36 (Surface)						
2,496' /	--- 2.21						
3,506' /	--- 1.06						
4,517' /	--- 0.21						
5,604' /	--- NA						

STRAP @ NA (Windy)

Board:
Strap:
Diff:

CONTRACTOR

Wildcat Drilling --- Rig #1

880 West Highway 40
Cheyenne Wells, Colorado
Office: (719) 767-5100

Rig #1 - (719) 340-1515

Toolpusher: Josh Kliesen (719) 340-1212

Pump: PZ-8 (Tri-Plex)
6" x 8" @ 125/130 SPM.
1,000-1,200 PSI @ Standpipe.

After Mudup / Main Hole:
WOB 15M @ 95/115 RPM.












Drill Collars: 6.25" x 2.25" --- 461'. (91#/ft)
Collar Weight in Air: 41,951#
Collar Weight in MUD: 36,455#
(@ 8.6 ppg / Buoyancy Factor 0.86)
Design Factor: 15%, therefore:
available WOB is 30,987##
Drill Pipe: 4" FH. (14#/ft - used)

BIT RECORD

DATE	SIZE	TYPE	JET SIZE	DEPTH IN / OUT	CUM. FT.	HOURS	Ft/Hr ROP
30 May 2013	17-1/2"	R - T	18 - 18 - 18	0' / 455'	455'	3.5	130.0'
1 June 2013	12-1/4"	R - R	18 - 18 - 18	455' / 1,676'	1,221'	20.6	59.3'
1 June 2013	7-7/8"	Hughes DP506F	16 - 18 - 16	1,676' / 5,604'	3,928'	110.2	35.6'

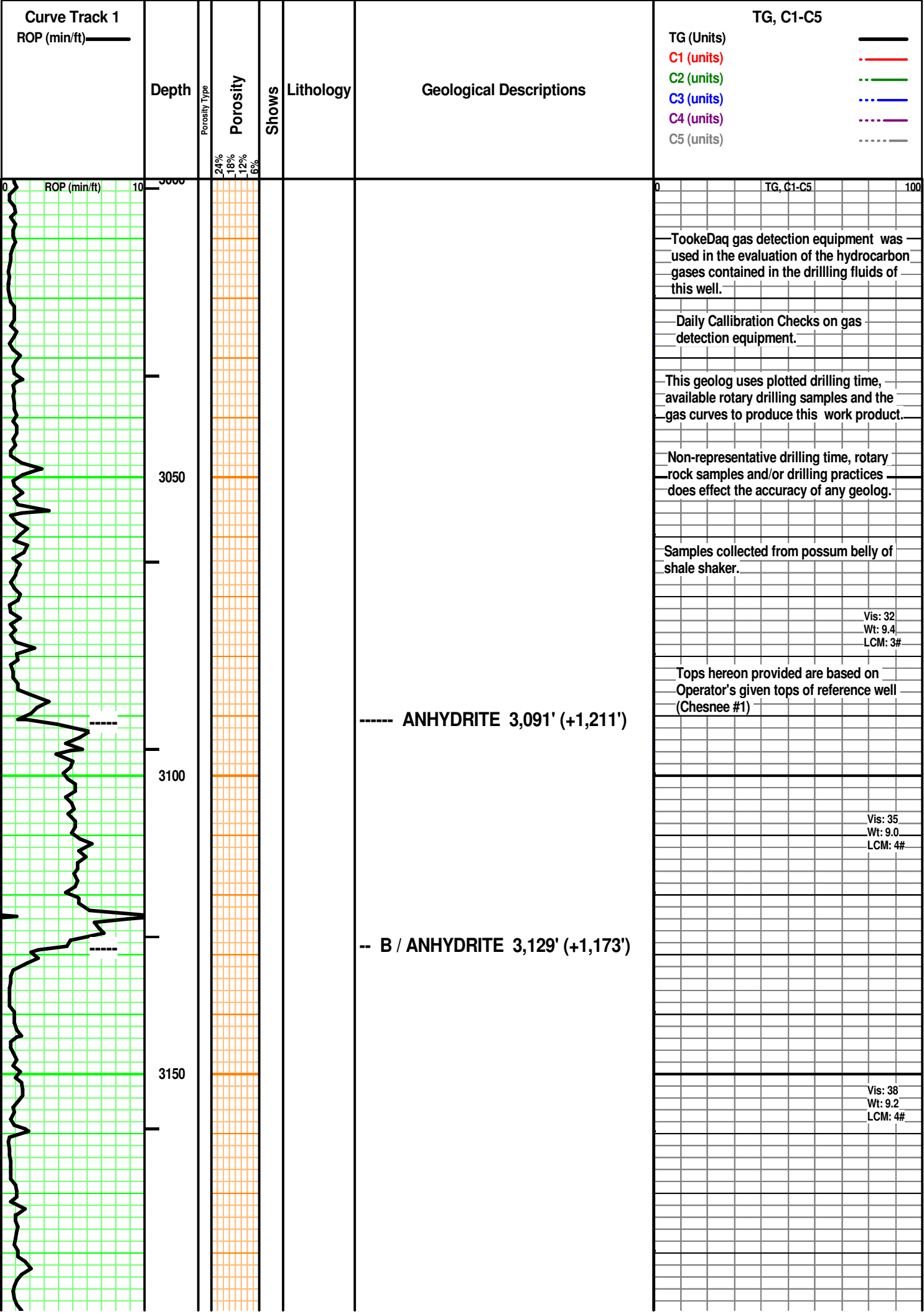
	Dol ls
	Ls
	Mrst
	Calc dol
	Sltstrg
	Ssstrg
	Chalk
	New symbol

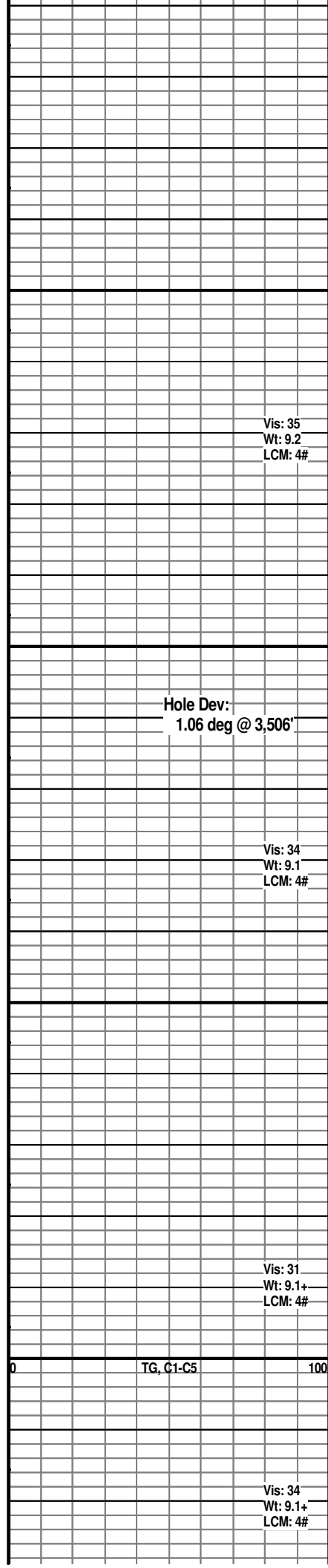
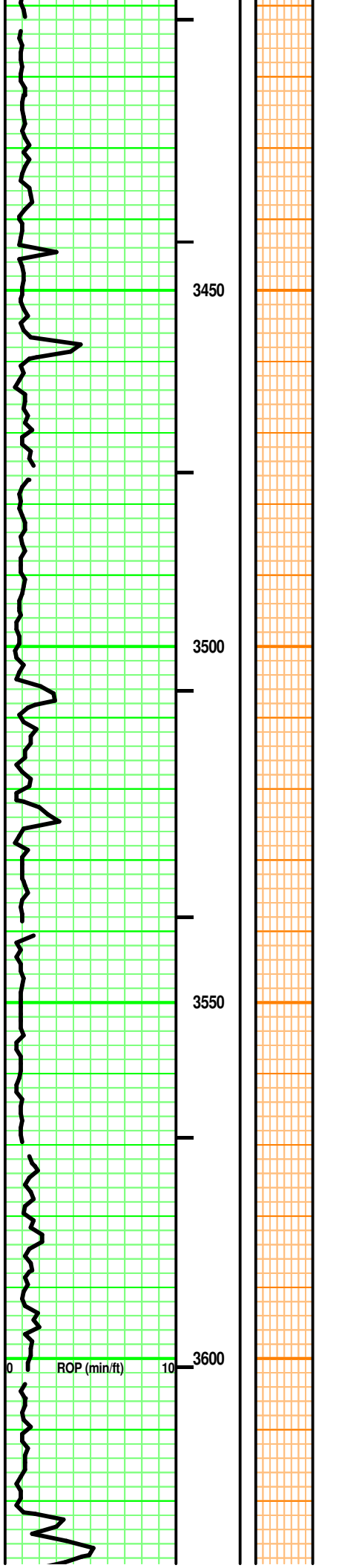
SHOW	
	Oil
	Spotted
	Ques
	Dead
	Gas
	Oil/gas
	Bed contact

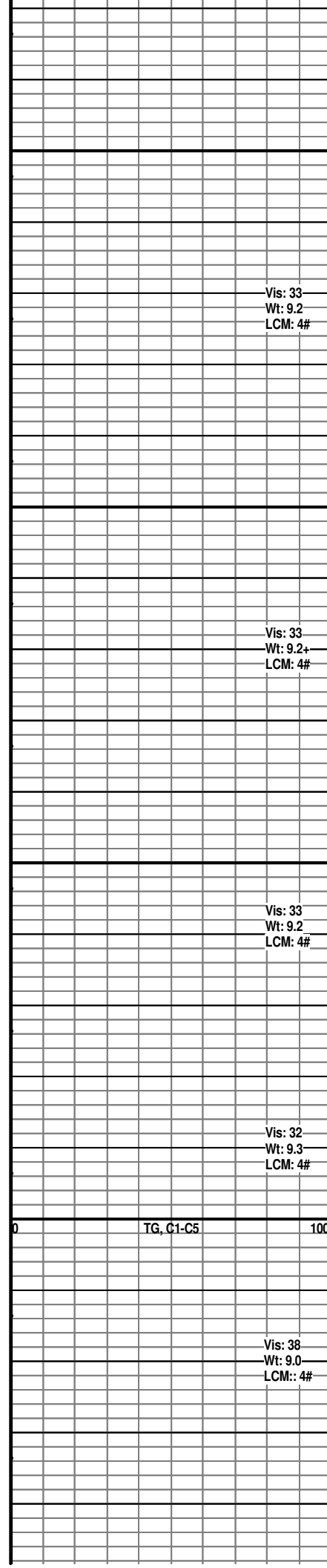
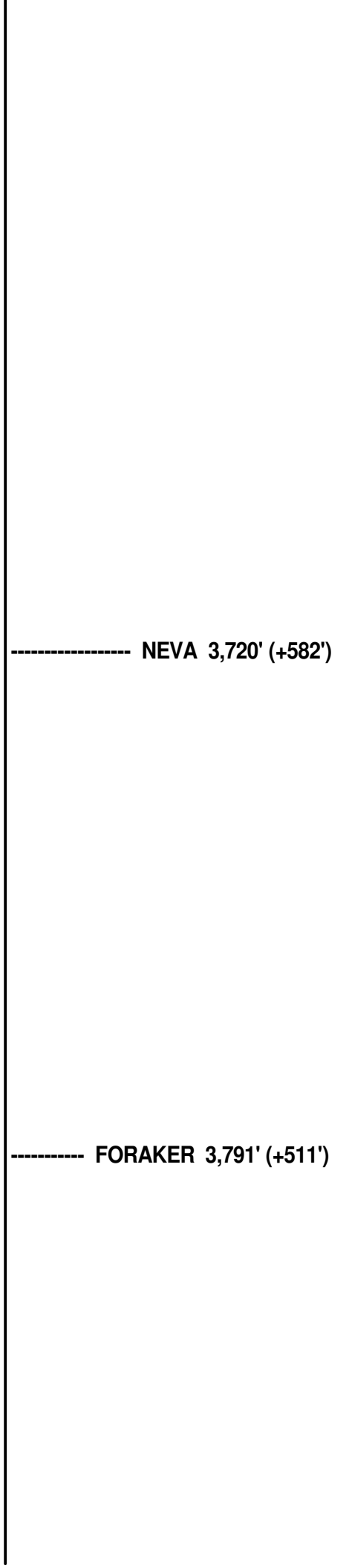
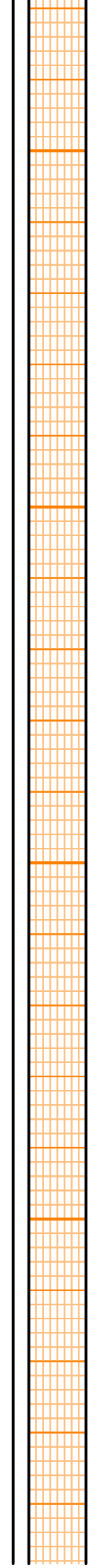
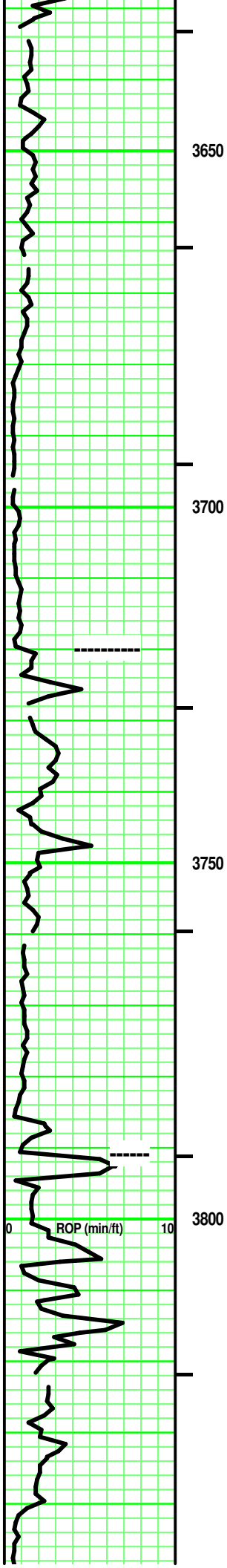
	Anhy
	Bent
	Brec
	Cht
	Clyst
	Coal
	Granite v
	Congl
	Dol lmst
	Silty dol
	Calc dol

	Silty dol
	Anhy
	Arg
	Bent
	Coal
	Dol
	Gyp
	Dol ls
	Ls
	Mrst
	Calc dol
	Sltstrg
	Ssstrg
	Chalk
	New symbol

 **Sidewall**







Vis: 33
Wt: 9.2
LCM: 4#

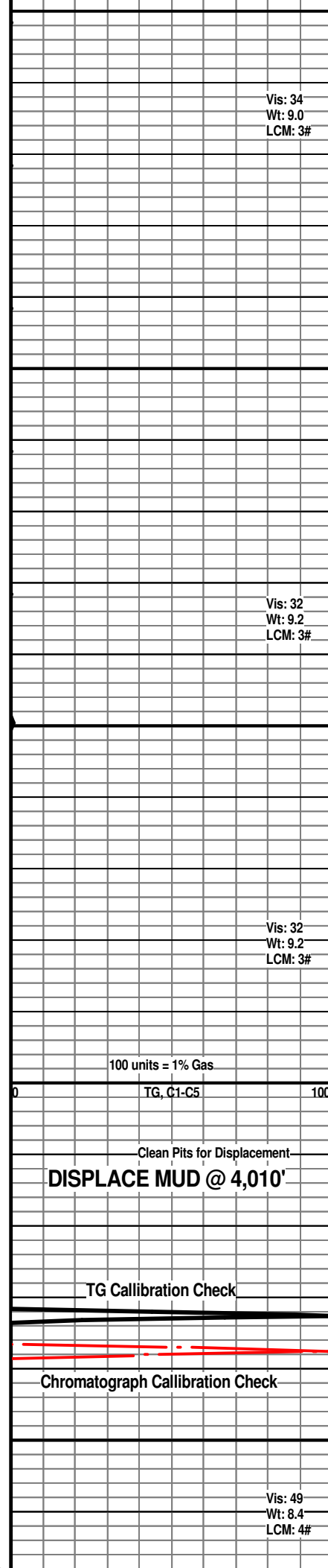
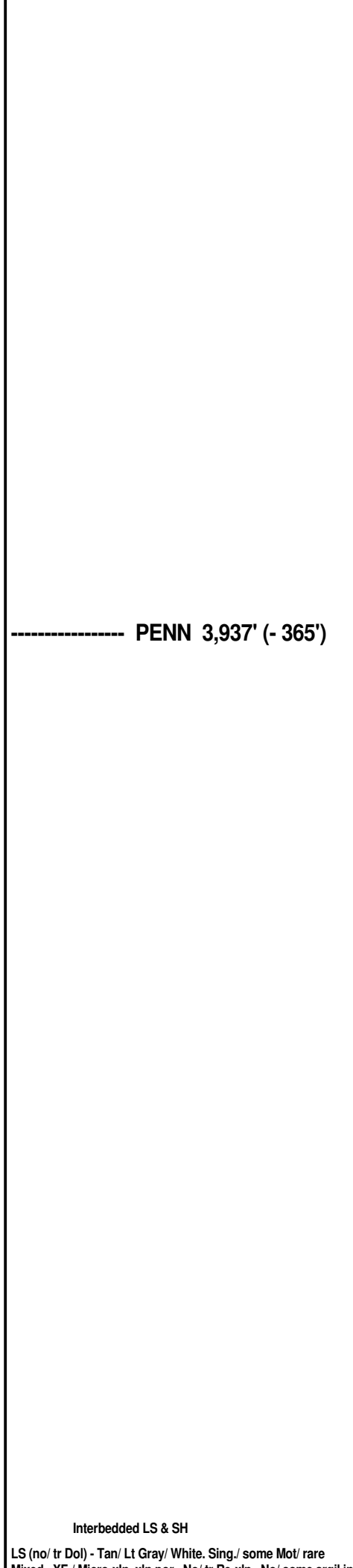
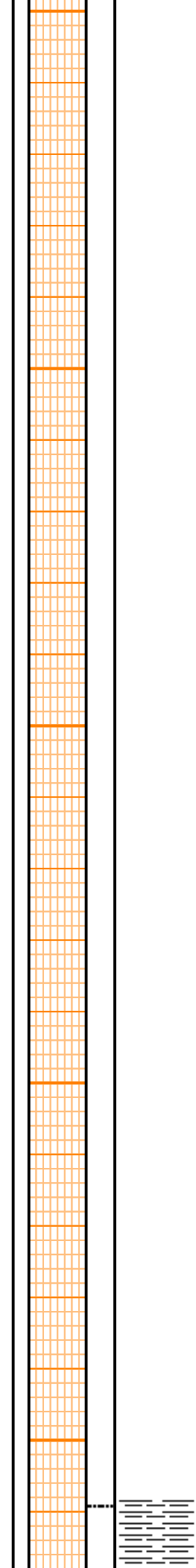
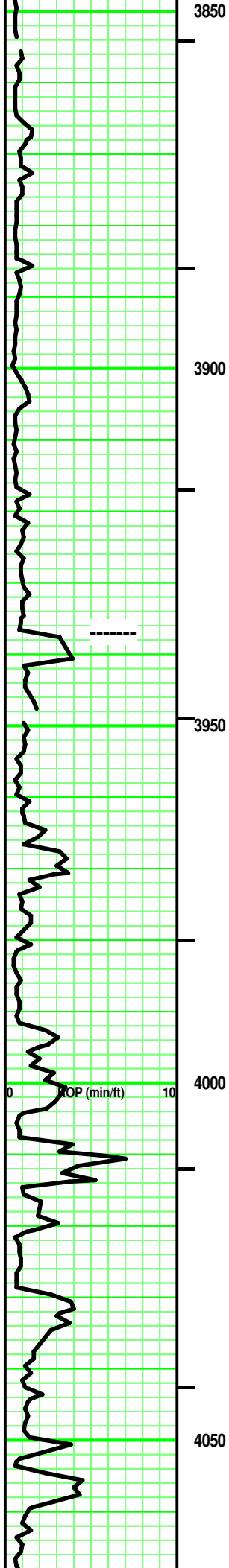
Vis: 33
Wt: 9.2+
LCM: 4#

Vis: 33
Wt: 9.2
LCM: 4#

Vis: 32
Wt: 9.3
LCM: 4#

TG, C1-C5

Vis: 38
Wt: 9.0
LCM: 4#



Vis: 34
Wt: 9.0
LCM: 3#

Vis: 32
Wt: 9.2
LCM: 3#

Vis: 32
Wt: 9.2
LCM: 3#

100 units = 1% Gas

Clean Pits for Displacement

DISPLACE MUD @ 4,010'

TG Callibration Check

Chromatograph Callibration Check

Vis: 49
Wt: 8.4
LCM: 4#

Interbedded LS & SH

LS (no/ tr Dol) - Tan/ Lt Gray/ White. Sing./ some Mot/ rare
Mixed. YE / Micro silt. silt. No/ tr Dol. No/ some silt. in

Mixed. XF-/ Micro-xln. xln por. No/ tr Re-xln. No/ some argil in part. No/ rare fossil frag. Dense. No/ tr vis por.

LS - Lt/ tr Med Gray. Sing/ tr Mot. XF-/ Micro-xln. xln por. argil/ shaly in part. partly Firm. No/ tr vis por.

SH - Lt/ Med Gray. rare SilverGray / Tannish Gray. Sing. No/ tr marly in part. tr silty in part with depth.

SH - Lt Gray. Sing. Marly. soft. Massive.

Interbedded LS, SH & tr Siltstone
few pcs: LS (No/ tr Dol) - Tan/ Pale Tannish Off White. Sing/ tr Mot. XF-xln. xln & part por. No/ tr Micro-Ooloids. No/ rare subchalky. fossil frags. No/ tr vis por.

Fair/ Good odor. Uniform Med Yellow florescence. On own, rare minute gas bubble. No free oil. Spotted/ tr uniform V Lt Brown stain. Pos cut/ residual. Pos acid/ residual.

few pcs: DOL (No/ tr Calc) (1) - Pale Lt Grayish Tan. Sing. Micro-xln. xln por. No/ tr argil in part. No/ tr vis por. Fair/ Good odor. Uniform Med Yellow florescence. On own, rare minute gas bubble. No free oil. Spotted/ tr uniform V Lt Brown stain. Pos cut/ residual. Pos acid/ residual.

few pcs: LS (tr Dol) - Off White/ some Tan. Sing. XF-/ Micro-xln. xln por. No/ some chalky in part. misc. minute carb frags (SR, VF). Friable in part. No/ tr vis por. ?/ Weak odor. rare Spotted, dull Yellow florescence. No free oil or gas. tr minute oil smears on wash water. No/ Weak Pos cut & residual. No/ Weak Pos acid & residual.

SH - Grays. Sing. No/ tr silty. No/ tr calc. Mixed in part.

LS (Dol) (2) - Tan/ Lt Gray. Sing. Micro-Re-xln. xln & part por. No/ some subchalky in part. No/ tr misc minute dark specks/frags. partly Friable. No/ tr vis por. Fair odor. No/ Spotted Yellow florescence. No free oil or gas. No stain. Weak Pos/ Pos cut and residual. Weak Pos/ Pos acid and residual.

LS - Lt/ Med Tan. Sing. VF-/XF-xln. xln por. tr Re-xln. No/ tr subchalky. part Firm. No/ tr vis por.

Add: SH - Black. Sing. carb. soft.

LS (tr Dol) - Lt/ Med Tan. tr Lt Gray.. Sing. VF-/XF-xln. xln por. tr Re-xln. No/ tr subchalky. Hi silty in part. No/ tr vis por.

Siltstone - Greenish Gray / some Blusih Green Sing. hi calc in part. No/ tr misc minute dark specks. Friable.

LS - similiar to (3) below.

SH - Black. Sing. carb. soft. tr platy. phos streaks.

LS (3) - Lt & Med Tan. Sing. XF-/ Micro-xln. xln por. tr Re-xln. argil in part. mostly Firm. No/ tr vis por.

LS (Dol) Pale Lt Brown. Sing. Micro-xln. xln & mostly sucrosic por. Friable. tr vis por. lmy in part.

Close Possum Belly Gate

RED BEDS CARVINGS
Vis: 48
Wt: 8.5
LCM: 4#

-- SHAWNEE
4,125' (+177')

Vis: 47
Wt: 8.5
LCM: 4#

CFS @ 4,142': 40"

Vis: 46
Wt: 8.5
LCM: 4#

CFS @ 4,168': 40"

-100 units = 1% Gas

TG, C1-C5

Vis: 50
Wt: 8.5
LCM: 4#

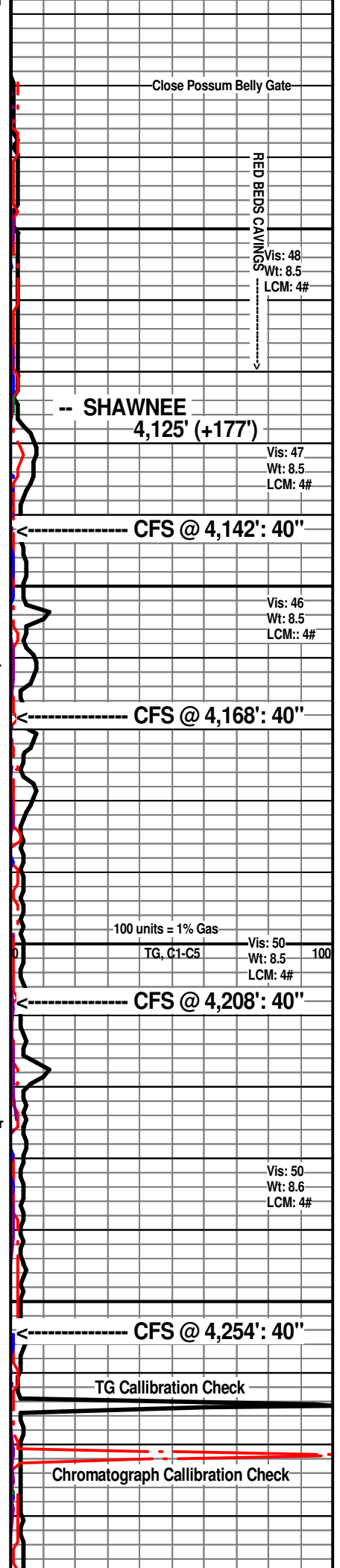
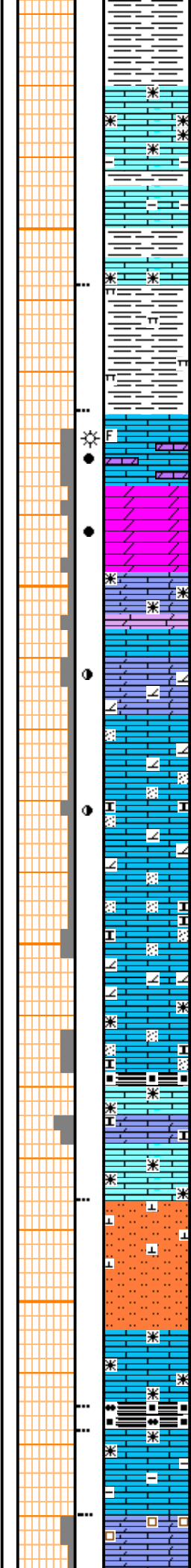
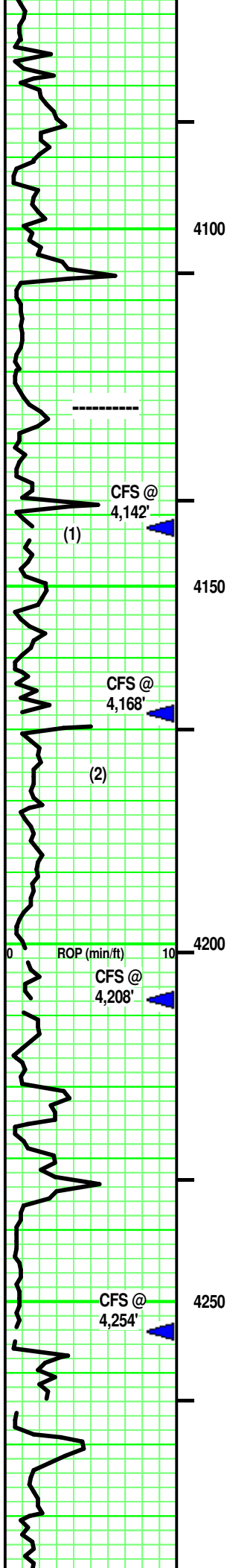
CFS @ 4,208': 40"

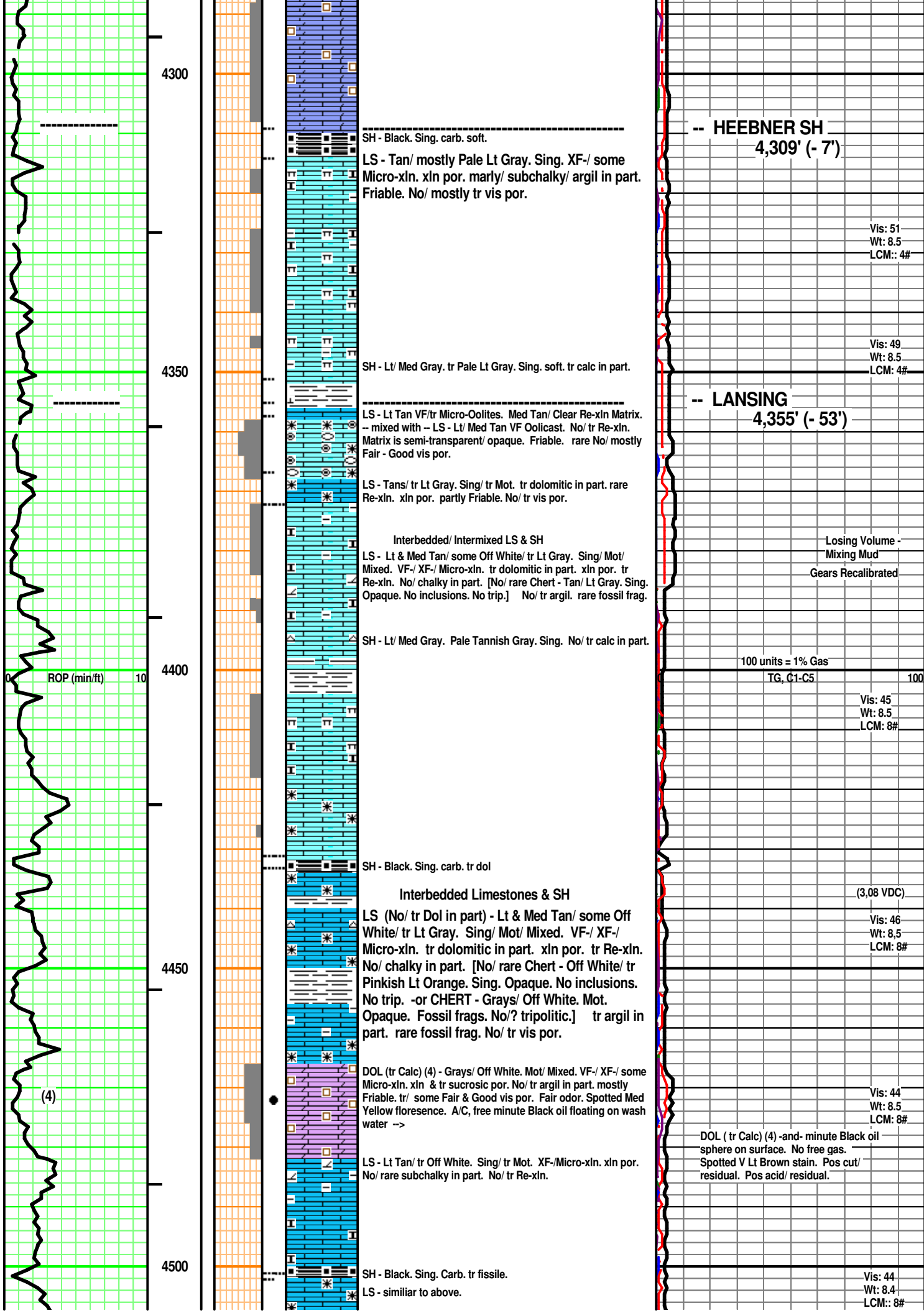
Vis: 50
Wt: 8.6
LCM: 4#

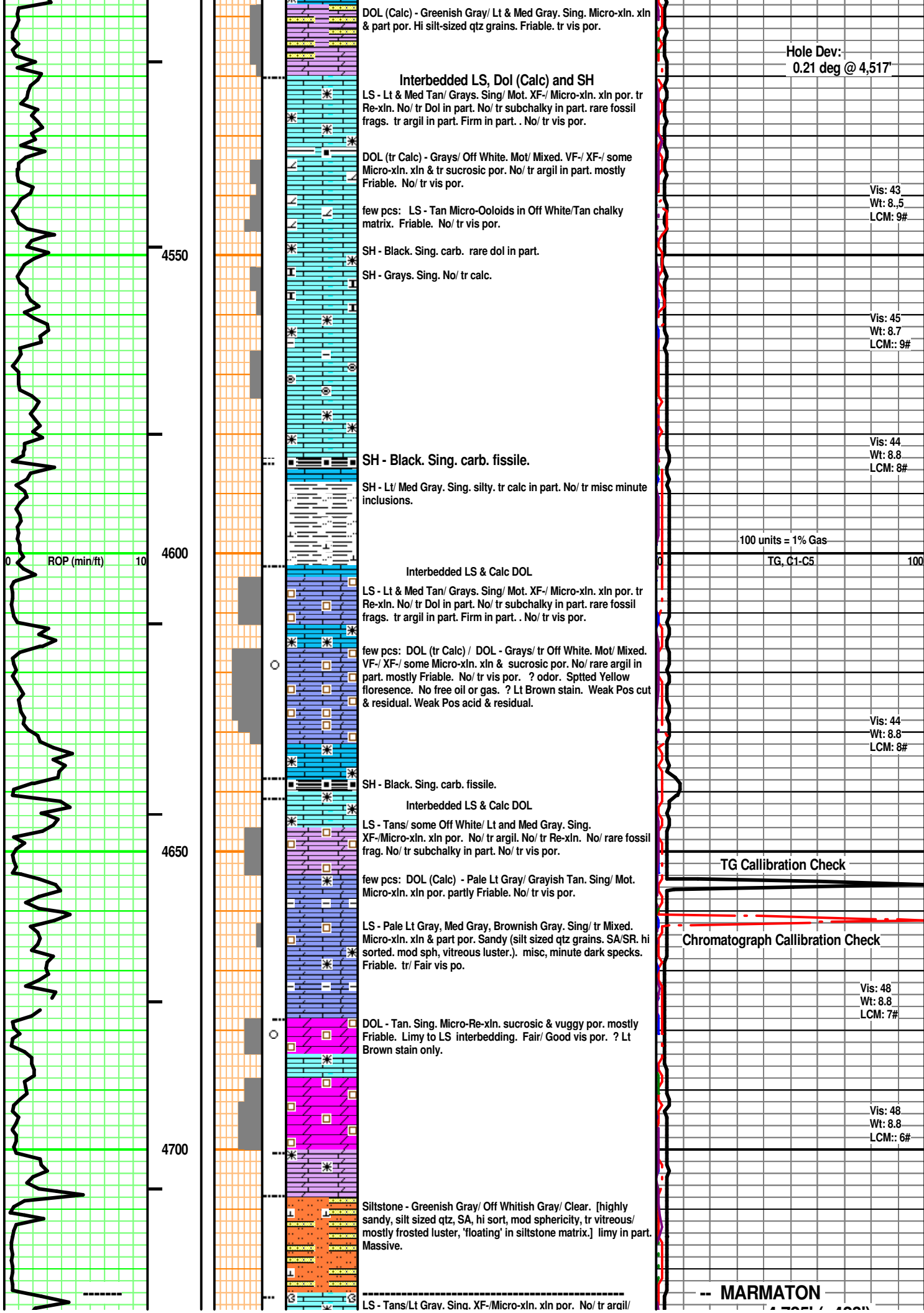
CFS @ 4,254': 40"

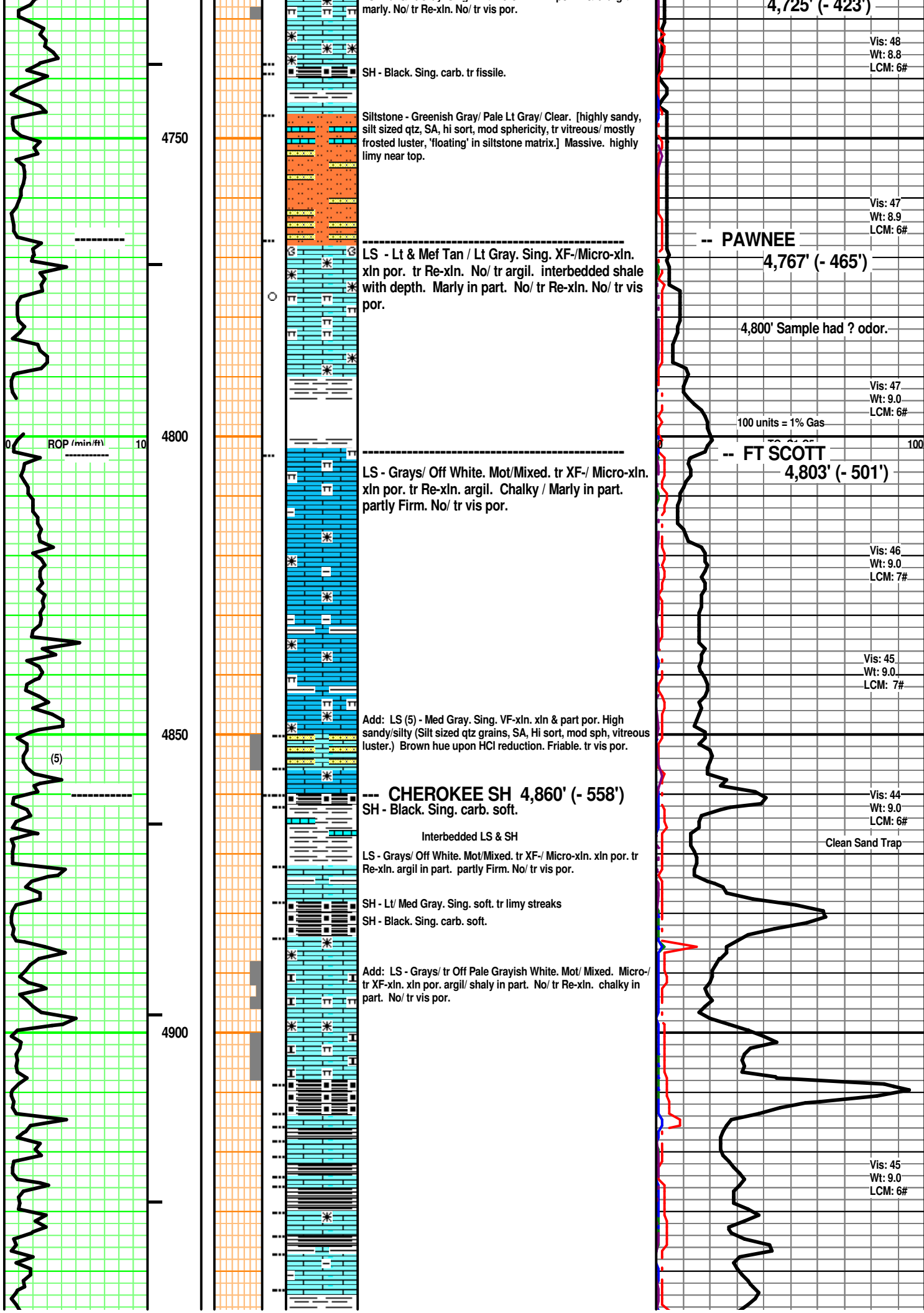
TG Callibration Check

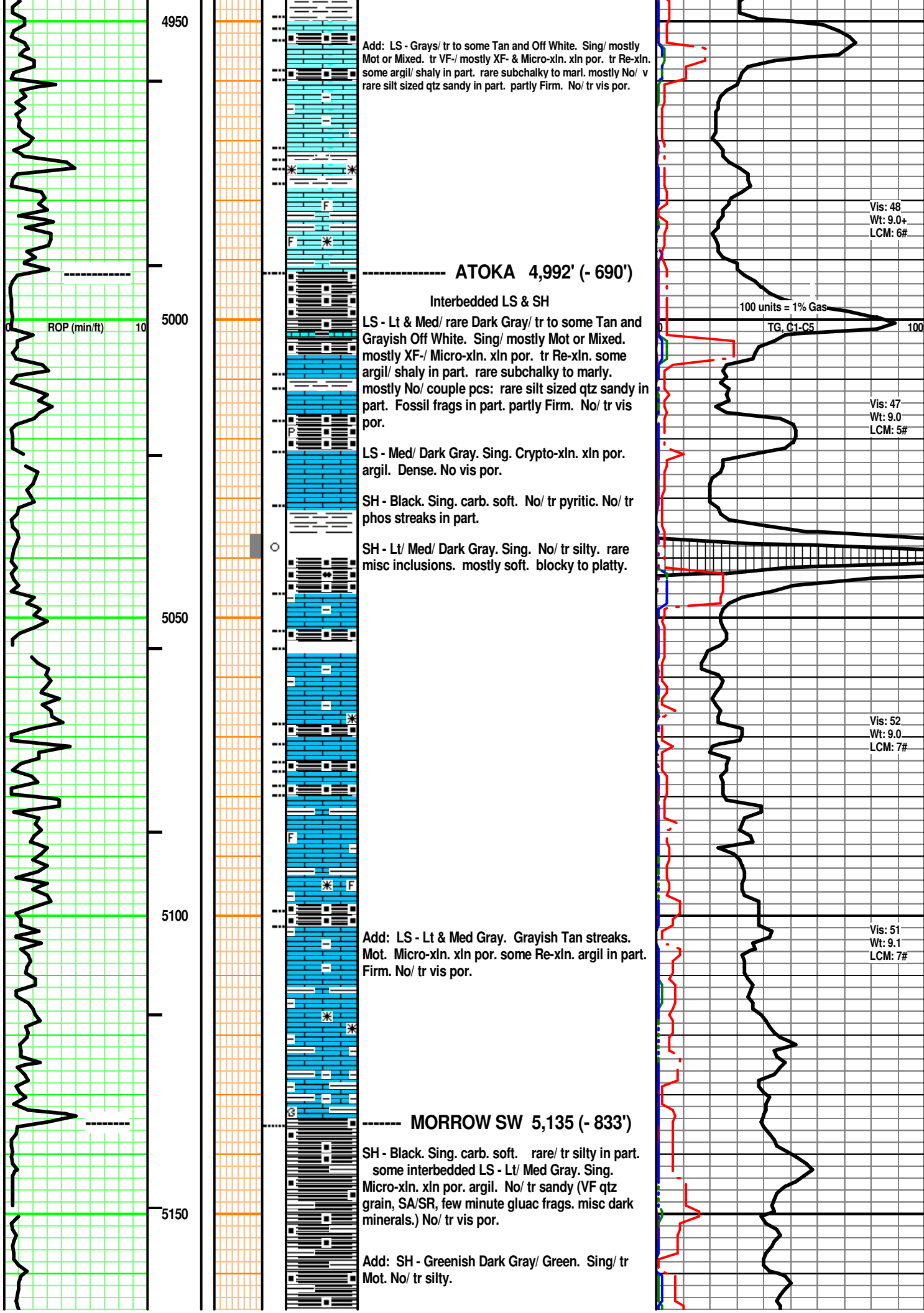
Chromatograph Callibration Check

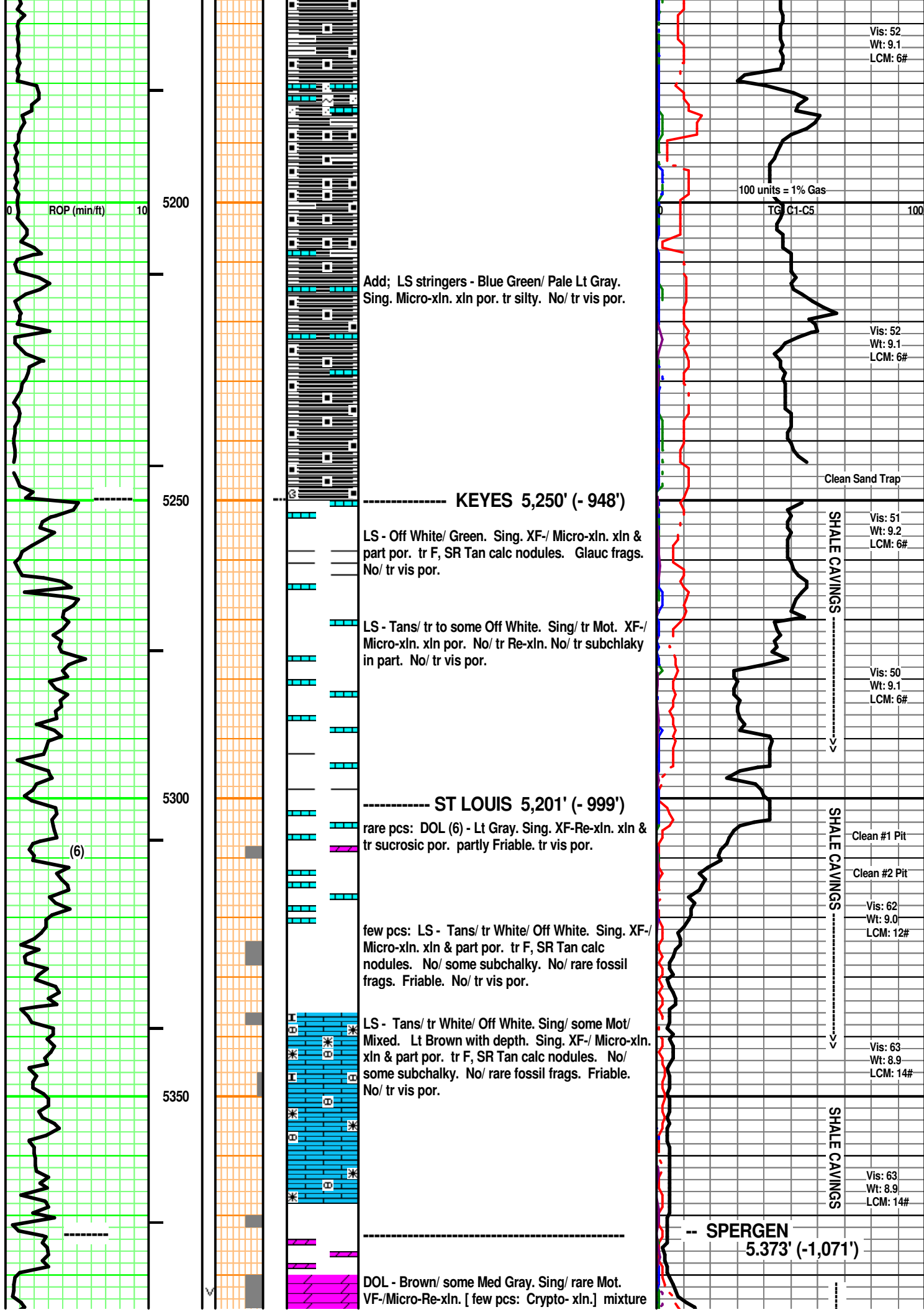


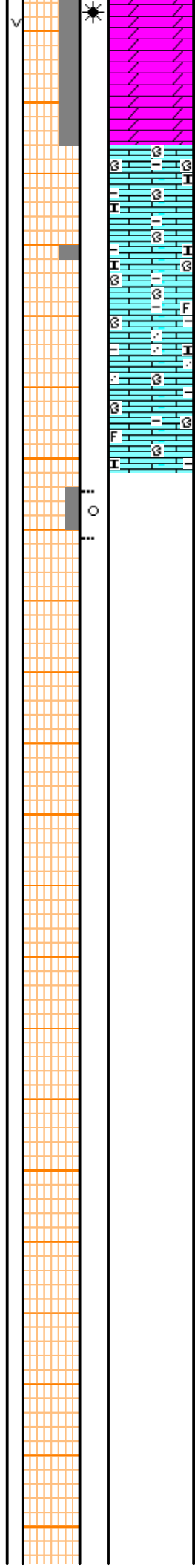
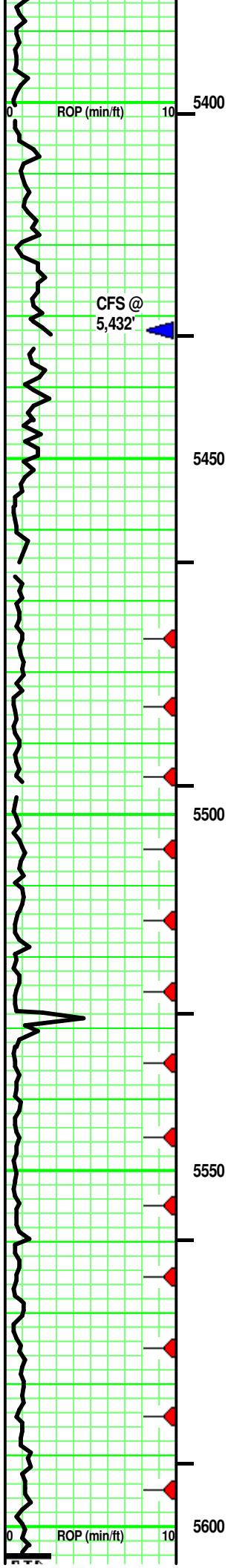








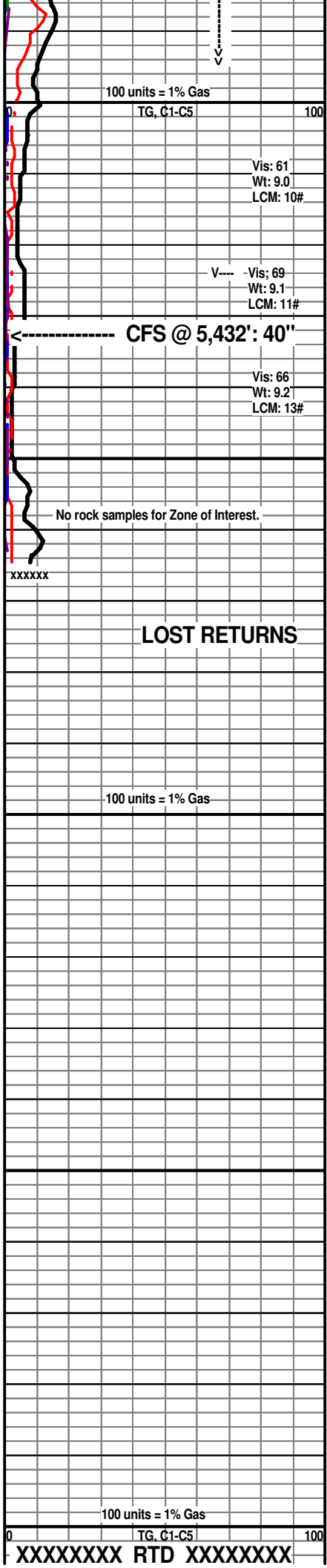


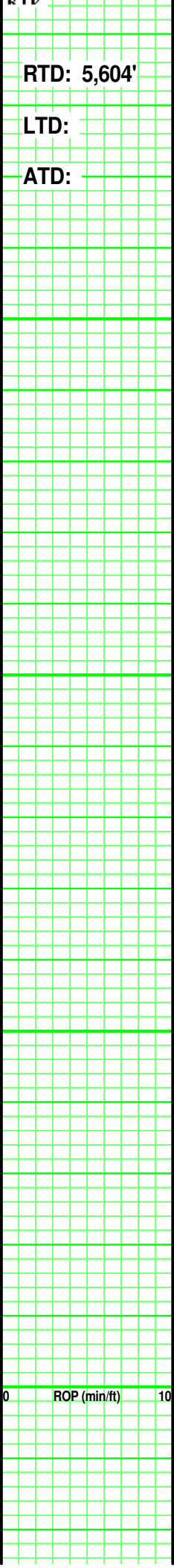


of: some vuggy/ sucrosic/ xln por. Friable. tr/ mostly Fair/ some Good vis por. Fair odor. Spotted/ Uniform Yellow florescence. On own, gas/oil bubbles in vuggy por. A/C, tr free Black oil. rare gas bubbles. Spotted/ uniform Med Brown stain. Pos cut/ residual. Pos acid/ residual.

LS - Med Gray/ Off White/ Tans. Mot/ Mixed. VF-xln. xln & part por. F/ VF, SA shale frags & flecks (mixed). subchalky in part. No/ rare fossil frag. No/ tr vis por.

Add: Sandy (silt sized qtz grains, SR, Hi sort, Mod sph, Vitreous luster).





RTD: 5,604'

LTD:

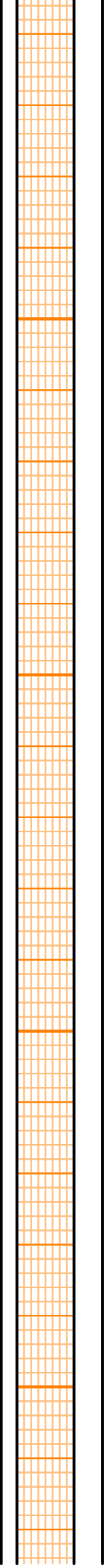
ATD:

5700

5750

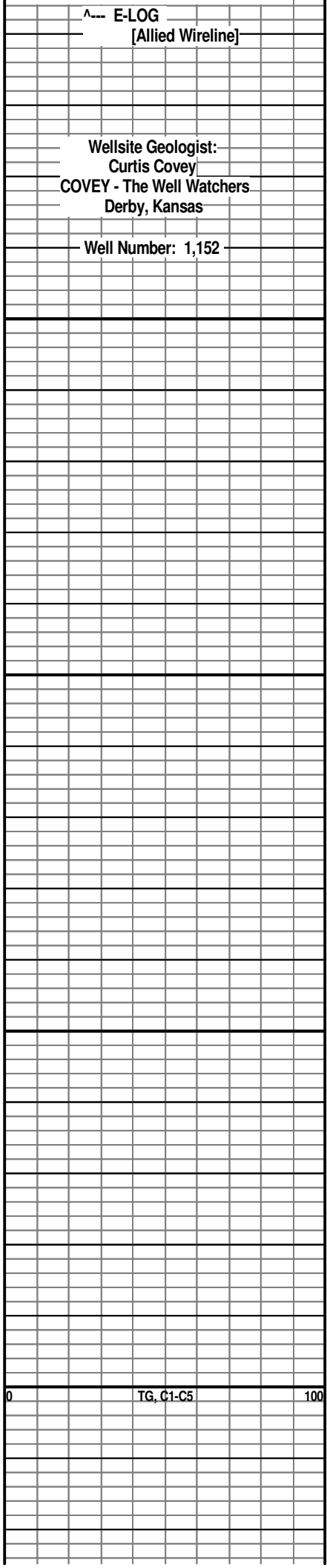
5800

0 ROP (min/ft) 10



CHESNEE #2
731' FNL & 636' FEL 7 - T14S - R44W
Cheyenne County, Colorado

PRONGHORN OPERATING, LLC.
Greenwood Village, Colorado



^--- E-LOG
[Allied Wireline]

Wellsite Geologist:
Curtis Covey
COVEY - The Well Watchers
Derby, Kansas

Well Number: 1,152

0 TG, C1-C5 100

[illegible]