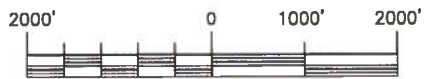
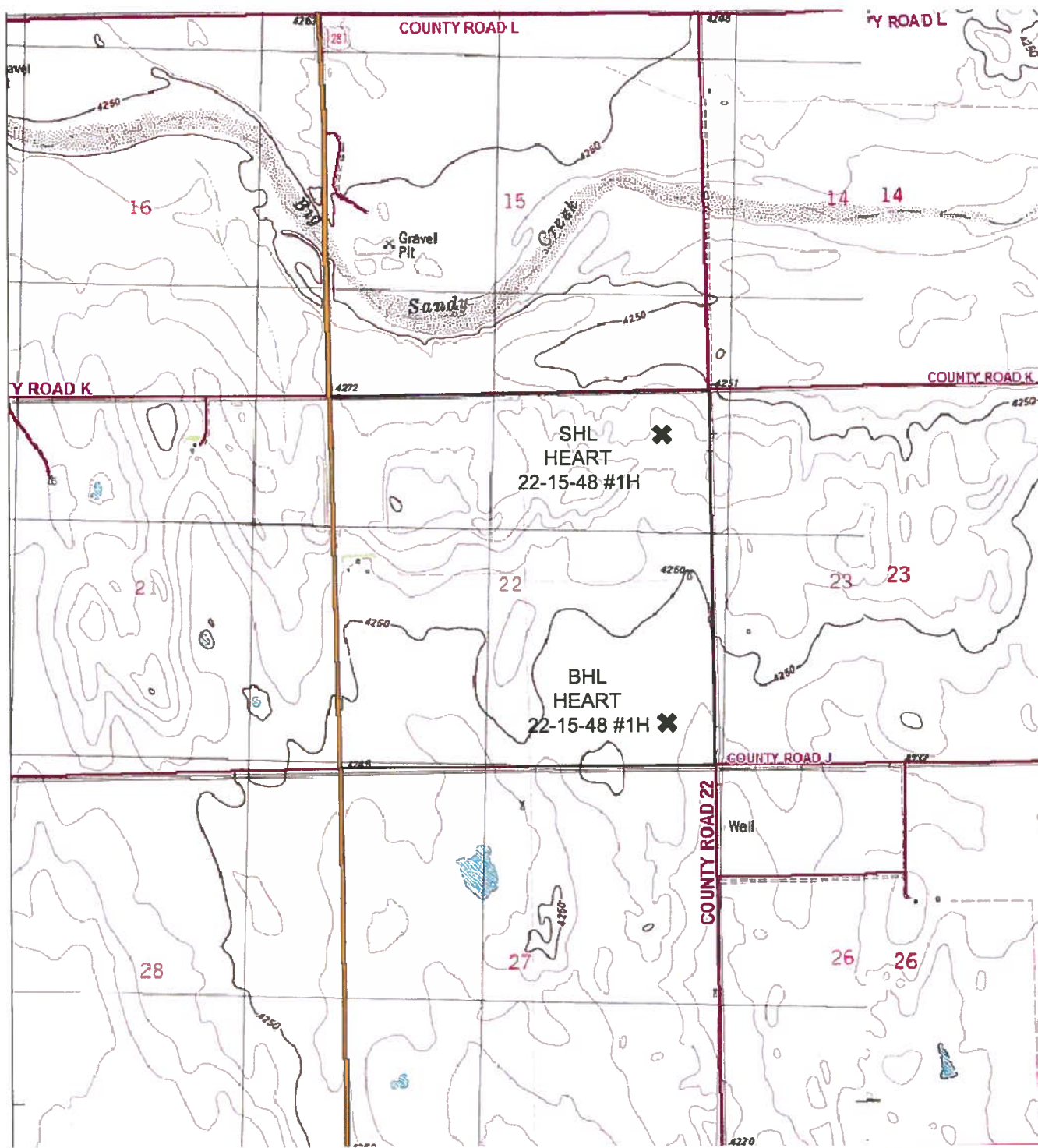


TOPOGRAPHY MAP HEART 22-15-48 #1H



SCALE 1" = ±2000'

T 15 S
R 48 W
CHEYENNE
COUNTY



120 W. 84TH AVENUE PH. 303-702-1617
THORNTON, COLORADO 80260 FAX. 303-702-1488

WWW.POWERSURVEYING.COM

DATE OF FIELD WORK: 05/14/13

DATE OF COMPLETION: 05/24/13

PROJECT NUMBER: 501-13-099