



DHN8B-1 A1121005B-12 A11 2100
GREGG, LORRAINE E.

6 2S 100W

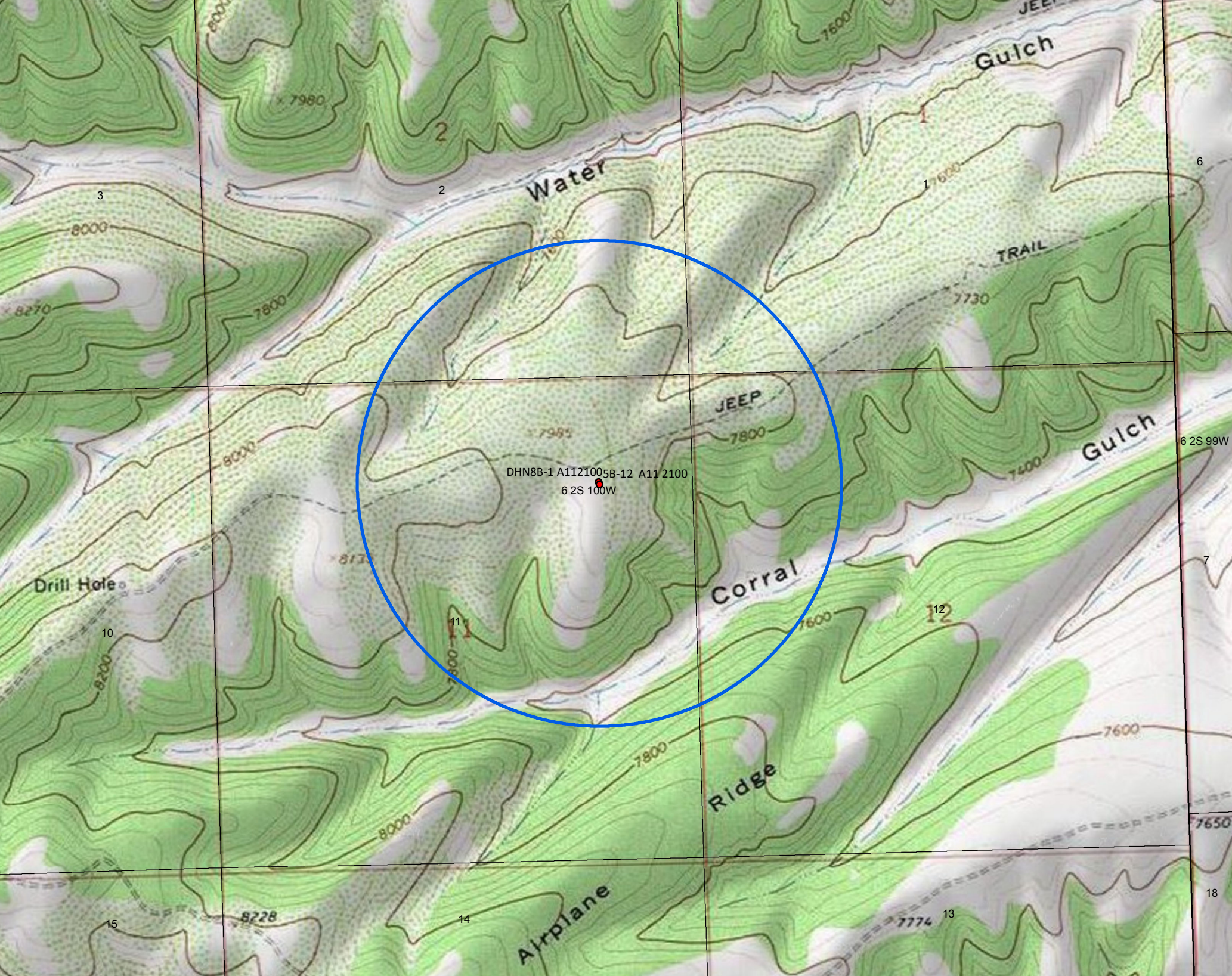
6 2S 99W
JANKE, NOLA RAE

11647

1165011627

1165111628

232767



Water Rights Report by Structure Name

State of Colorado																							HydroBase						
WD	ID	Water Right Name	Struct Type	Stream Information		Legal Location				Use Type	Decreed		Adj. Type	Adj. Date	Padj Date	Apro Date	Admin No	O #	Priority No.	Court Case	Seq #	P/A	Alter ID	Comment					
				#	Name	Cty	Q10	Q40	Q160		sec	ts													rng	pm	U	Amt	
43	1789	SWEPI SPRING 2	4	190	WATER GULCH	RBL		NE	SW	2	2	S	100	W	S	X		0.2330	C	S,C	1988-12-31	1987-12-31	1988-06-13	50568.00000	0			88CW0363	
43	1789	SWEPI SPRING 2	4	190	WATER GULCH	RBL		NE	SW	2	2	S	100	W	S	145689PW		0.2330	C	S,C,TF	1988-12-31	1987-12-31	1988-06-13	50568.00000	0			04CW0041	
43	1789	SWEPI SPRING 2	4	190	WATER GULCH	RBL		NE	SW	2	2	S	100	W	S	145689PW		0.2330	C	S,C,TT	1988-12-31	1987-12-31	1988-06-13	50568.00000	0			04CW0041	MUNCIPAL & "ALL OTHER BENEFICIAL USES" CANCELLED
43	1789	SWEPI SPRING 2	4	190	WATER GULCH	RBL		NE	SW	2	2	S	100	W	S	145689PW		0.2330	C	S,C,AB	1988-12-31	1987-12-31	1988-06-13	50568.00000	0			04CW0041	CANCELLED BY COURT ORDER 2/14/11

Explanation of Codes:

Struct Type: 0 - other, 1 - ditch, 2 - well, 3 - reservoir, 4 - spring, 5 - seep, 6 - mine, 7 - pipeline, 8 - pump, 9 - power plant

Use Codes: 0 - storage, 1 - irrigation, 2 - municipal, 3 - commercial, 4 - industrial, 5 - recreation, 6 - fishery, 7 - fire, 8 - domestic, 9 - stock, A - augmentation, B - export from basin, C - cumulative accretion to river, D - cumulative depletion from river, E - evaporation, F - federal reserve, G - geothermal, H - household use only, K - snow making, M - minimum streamflow, N - net effect of river, P - power generation, Q - other, R - recharge, S - export from state, T - transmountain export, W - wildlife, X - all beneficial use

Adj Type: AB - abandoned, AP - alternate point, C - conditional, CA - conditional made absolute, EX - exchange, O - original, S - supplemental, TF - transfer from, TT - transfer to

Admin Number is a number developed by DWR to provide a simple and efficient method of ranking decrees in order of seniority.