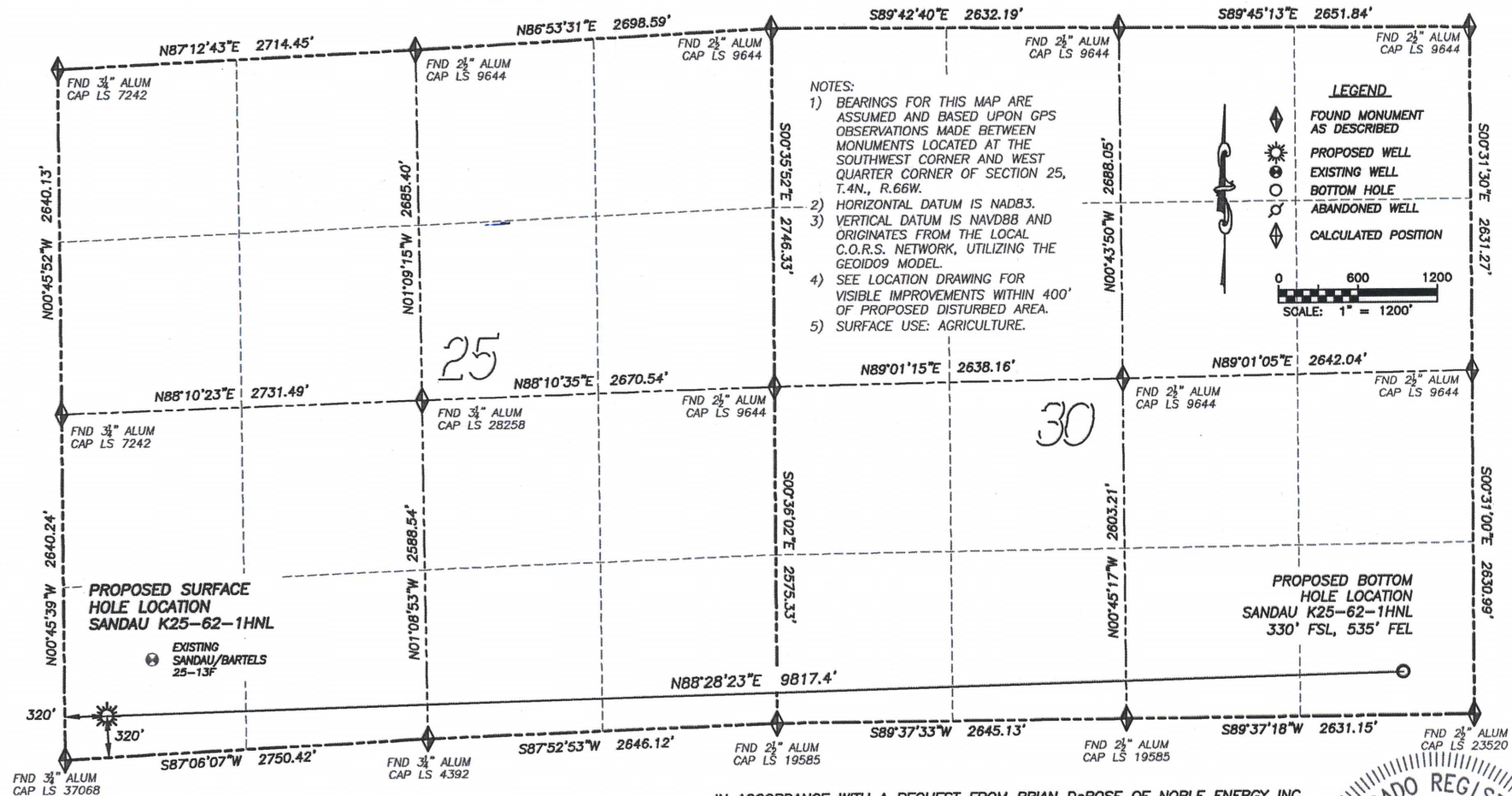


DALEY LAND SURVEYING, INC. PARKER, CO. 80134 303 953 9841
WELL LOCATION CERTIFICATE - SANDAU K25-62-1HNL
SECTION 25, TOWNSHIP 4 NORTH, RANGE 66 WEST OF THE 6TH PRINCIPAL MERIDIAN



NAD 83 LATITUDE AND LONGITUDE

SANDBAU K25-62-1HNL

SURFACE HOLE:

LATITUDE: N40.27661°
LONGITUDE: W104.73370°

ELEVATION: 4798'

FOOTAGE: 320' FSL, 320' FWL
PDOP: 1.4

QTR/QTR: SW4/SW4

PROP LINE: 320'± SOUTH

BOTTOM HOLE:

LATITUDE: N40.27709°

LONGITUDE: W104.69852°

FOOTAGE: 330' FSL, 535' FEL
OF SEC 30 T4N R65W

NEAREST EXISTING WELL:

SANDAU BARTELS 25-13F

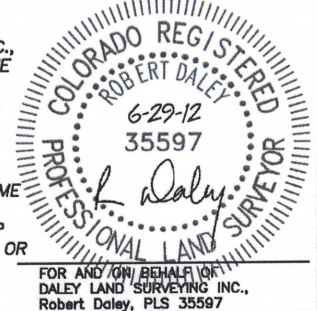
LATITUDE: N40.27778°

LONGITUDE: W104.7

ELEVATION: 47
550' NORTHEAST

IN ACCORDANCE WITH A REQUEST FROM BRIAN DeROSE OF NOBLE ENERGY INC., DALEY LAND SURVEYING, INC. HAS DETERMINED THE SURFACE LOCATION OF THE SANDAU K25-62-1HNL WELL TO BE 320' FSL, 320' FWL, AS MEASURED AT NINETY (90) DEGREES FROM THE SECTION LINES OF SECTION 25, TOWNSHIP 4 NORTH, RANGE 66 WEST OF THE 6TH PRINCIPAL MERIDIAN, WELD COUNTY, COLORADO. THE BOTTOM HOLE LOCATION, PROVIDED BY THE CLIENT, IS TO BE 330' FSL, 535' FEL OF SECTION 30, T.4N., R.65W.

I HEREBY CERTIFY THAT THIS WELL LOCATION CERTIFICATE WAS PREPARED BY ME OR UNDER MY DIRECT SUPERVISION, THAT THE WORK WAS COMPLETED ON 4/2/2012 FOR AND ON BEHALF OF NOBLE ENERGY, INC., AND THAT THIS MAP DOES NOT REPRESENT A BOUNDARY SURVEY, IT IS NOT A LAND SURVEY PLAT OR AN IMPROVEMENT SURVEY PLAT AND IT IS NOT TO BE RELIED UPON FOR THE ESTABLISHMENT OF FENCE, BUILDING OR OTHER FUTURE IMPROVEMENT LINES.



NOTICE: According to Colorado law you **MUST** commence any legal action based upon any defect in this W.L.C. within three years after you first discover such defect. In no event may any action based upon any such defect in this W.L.C. be commenced more than ten years from the date of the certification shown herein.

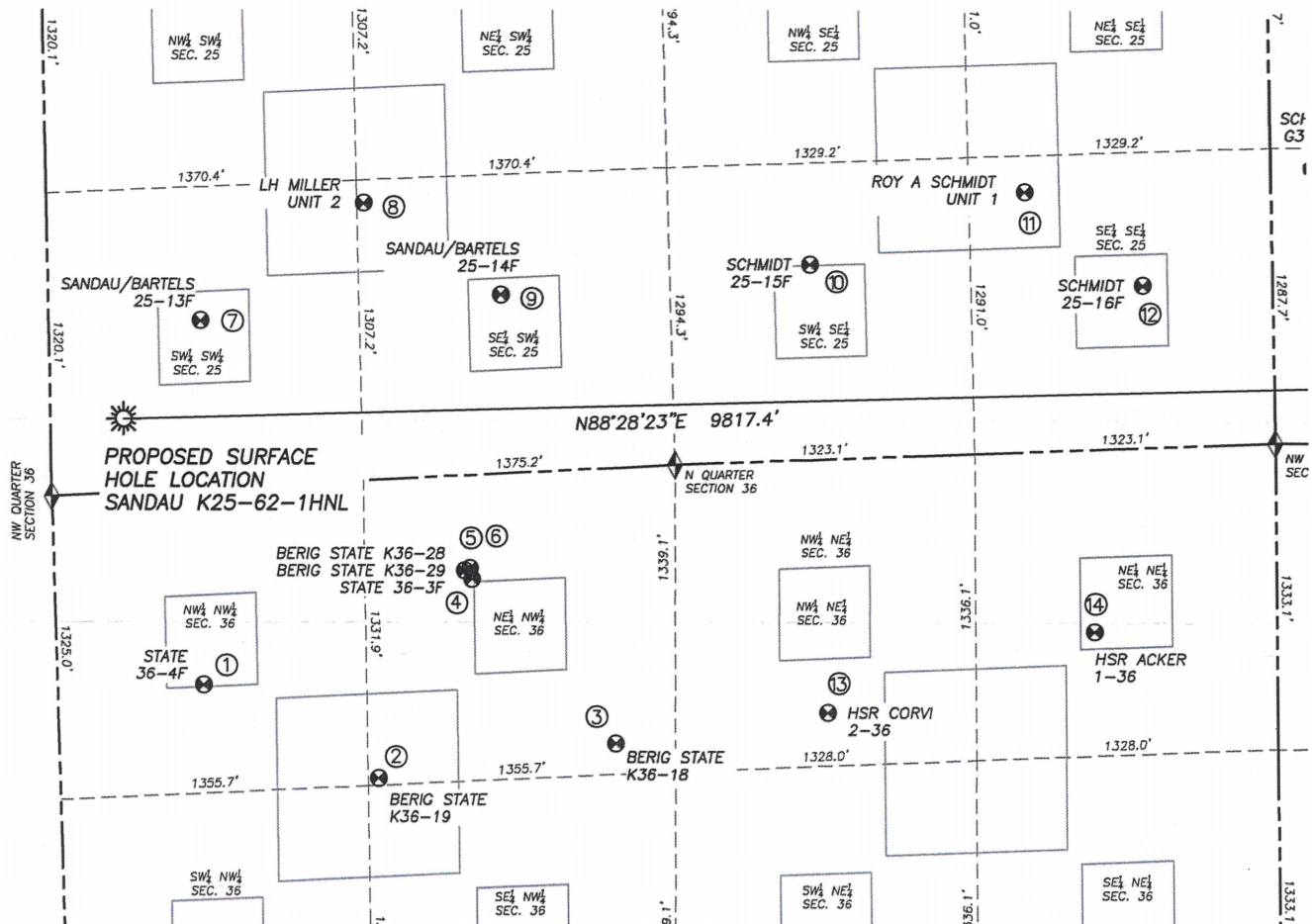
DALEY LAND SURVEYING, INC.

PARKER, CO. 80134

303 953 9841

SITE SKETCH SANDAU K25-62-1HNL

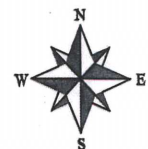
SECTION 25, TOWNSHIP 4 NORTH, RANGE 66 WEST OF THE 6TH PRINCIPAL MERIDIAN



| | Well Name | Qtr - Qtr | Footage | | Latitude | Longitude | Elevation | PDOP |
|----|-----------------------|-----------|-----------|-----------|----------|------------|-----------|------|
| 1 | STATE 36-4F | NW NW 36 | 855' FNL | 643' FWL | 40.27342 | -104.73249 | 4810 | 1.4 |
| 2 | BERIG STATE K36-19 | NE NW 36 | 1300' FNL | 1401' FWL | 40.27229 | -104.72975 | 4815 | 1.3 |
| 3 | BERIG STATE K36-18 | NE NW 36 | 1201' FNL | 2451' FWL | 40.27268 | -104.72600 | 4823 | 1.8 |
| 4 | STATE 36-3F | NE NW 36 | 454' FNL | 1841' FWL | 40.27466 | -104.72822 | 4812 | 1.5 |
| 5 | BERIG STATE K36-29 | NE NW 36 | 415' FNL | 1810' FWL | 40.27476 | -104.72833 | 4811 | 1.5 |
| 6 | BERIG STATE K36-28 | NE NW 36 | 407' FNL | 1833' FWL | 40.27479 | -104.72825 | 4811 | 1.5 |
| 7 | SANDAU/BARTELS 25-13F | SW SW 25 | 730' FSL | 670' FWL | 40.27778 | -104.73245 | 4796 | 1.4 |
| 8 | LH MILLER UNIT 2 | SE SW 25 | 1205' FSL | 1399' FWL | 40.27917 | -104.72984 | 4797 | 1.3 |
| 9 | SANDAU/BARTELS 25-14F | SE SW 25 | 777' FSL | 1996' FWL | 40.27806 | -104.7277 | 4802 | 1.3 |
| 10 | SCHMIDT 25-15F | SW SE 25 | 849' FSL | 2033' FEL | 40.27839 | -104.72280 | 4800 | 1.4 |
| 11 | ROY A SCHMIDT UNIT 1 | SE SE 25 | 1131' FSL | 1082' FEL | 40.27924 | -104.71940 | 4794 | 1.4 |
| 12 | SCHMIDT 25-16F | SE SE 25 | 706' FSL | 573' FEL | 40.27811 | -104.71757 | 4800 | 1.3 |
| 13 | HSR CORVI 2-36 | NW NE 36 | 1105' FNL | 1979' FEL | 40.27303 | -104.72264 | 4824 | 1.3 |
| 14 | HSR ACKER 1-36 | NE NE 36 | 795' FNL | 800' FEL | 40.27397 | -104.71840 | 4824 | 1.3 |

NOTES:

1. THIS DOES NOT REPRESENT A BOUNDARY SURVEY
2. HORIZONTAL DATUM IS NAD83
3. VERTICAL DATUM IS NAVD88 AND ORIGINATES FROM THE LOCAL C.O.R.S. NETWORK, UTILIZING THE GEOID09 MODEL



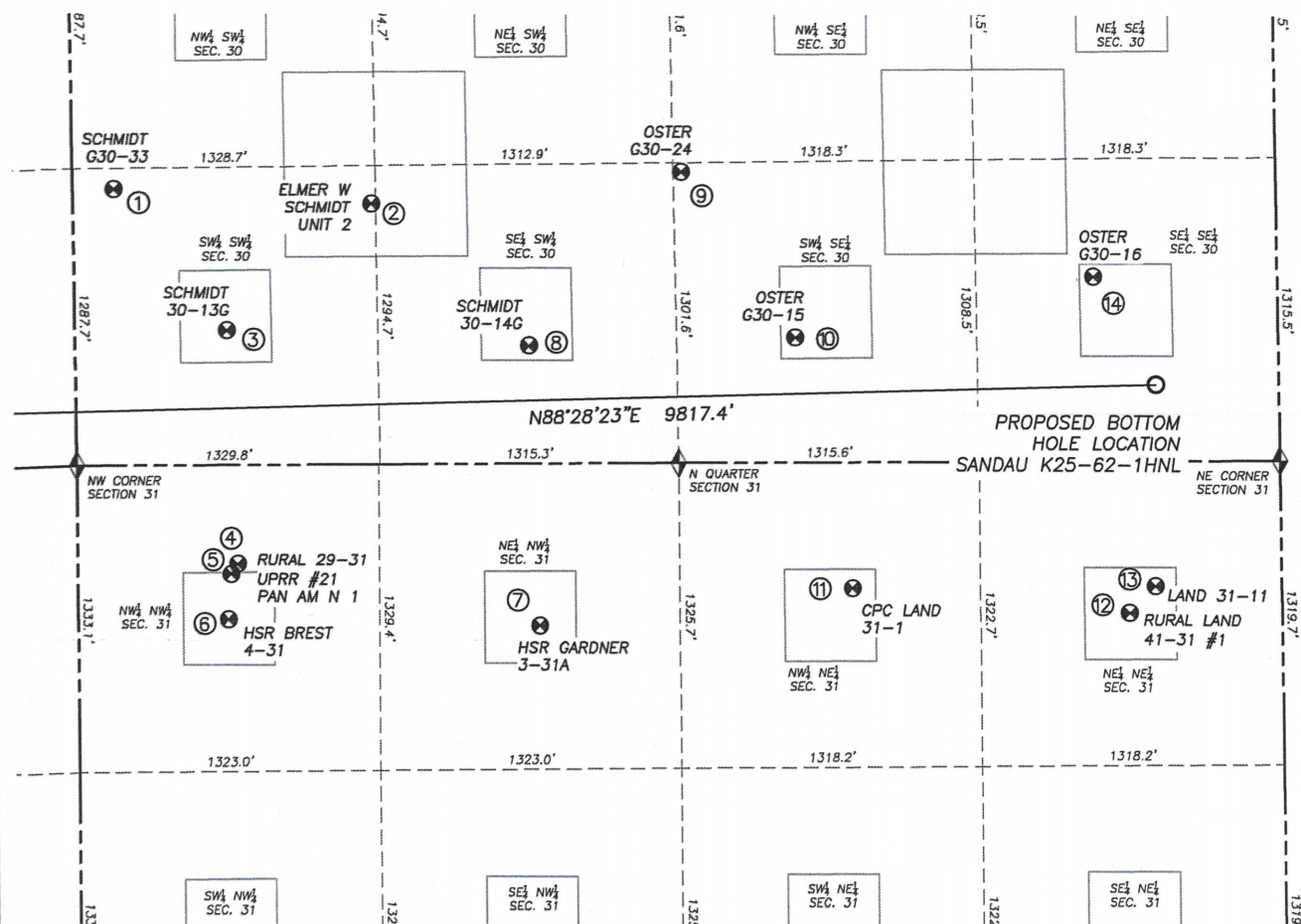
0 800
SCALE: 1" = 800'

LEGEND

- ◆ FOUND MONUMENT AS DESCRIBED
- ☀ PROPOSED WELL
- ⊙ EXISTING WELL
- BOTTOM HOLE
- ⊘ ABANDONED WELL
- ◆ CALCULATED POSITION

SITE SKETCH SANDAU K25-62-1HNL

SECTION 25, TOWNSHIP 4 NORTH, RANGE 66 WEST OF THE 6TH PRINCIPAL MERIDIAN



| | Well Name | Qtr - Qtr | Footage | | Latitude | Longitude | Elevation | PDOP |
|----|------------------------|-----------|-----------|-----------|----------|------------|-----------|------|
| 1 | SCHMIDT G30-33 | SW SW 30 | 1198' FSL | 180' FWL | 40.27950 | -104.71487 | 4815 | 1.5 |
| 2 | ELMER W SCHMIDT UNIT 2 | SW SW 30 | 1130' FSL | 1309' FWL | 40.27931 | -104.71083 | 4811 | 1.4 |
| 3 | SCHMIDT 30-13G | SW SW 30 | 584' FSL | 666' FWL | 40.27782 | -104.71313 | 4824 | 1.3 |
| 4 | RURAL 29-31 | NW NW 31 | 429' FNL | 701' FWL | 40.27503 | -104.71301 | 4828 | 1.2 |
| 5 | UPRR #21 PAN AM N 1 | NW NW 31 | 473' FSL | 673' FWL | 40.27492 | -104.71311 | 4830 | 1.3 |
| 6 | HSR-BREST 4-31 | NW NW 31 | 670' FNL | 660' FWL | 40.27437 | -104.71317 | 4835 | 1.3 |
| 7 | HSR GARDNER 3-31A | NE NW 31 | 703' FNL | 2027' FWL | 40.27428 | -104.70827 | 4834 | 1.3 |
| 8 | SCHMIDT 30-14G | SE SW 30 | 511' FSL | 1992' FWL | 40.27761 | -104.70838 | 4819 | 1.2 |
| 9 | OSTER G30-24 | SW SW 30 | 1262' FSL | 2602' FEL | 40.27966 | -104.70593 | 4835 | 1.2 |
| 10 | OSTER G30-15 | SW SE 30 | 541' FSL | 2113' FEL | 40.27768 | -104.70418 | 4858 | 1.3 |
| 11 | CPC LAND 31-1 | NW NE 31 | 547' FNL | 1878' FEL | 40.27469 | -104.70334 | 4849 | 1.3 |
| 12 | RURAL LAND 41-31 #1 | NE NE 31 | 659' FNL | 662' FEL | 40.27438 | -104.69899 | 4882 | 1.2 |
| 13 | LAND 31-11 | NE NE 31 | 543' FNL | 551' FEL | 40.27470 | -104.69859 | 4888 | 1.2 |
| 14 | OSTER G30-16 | SE SE 30 | 799' FSL | 800' FEL | 40.27838 | -104.69947 | 4875 | 1.1 |

NOTES:

1. THIS DOES NOT REPRESENT A BOUNDARY SURVEY
2. HORIZONTAL DATUM IS NAD83
3. VERTICAL DATUM IS NAVD88 AND ORIGINATES FROM THE LOCAL C.O.R.S. NETWORK, UTILIZING THE GEOID09 MODEL

