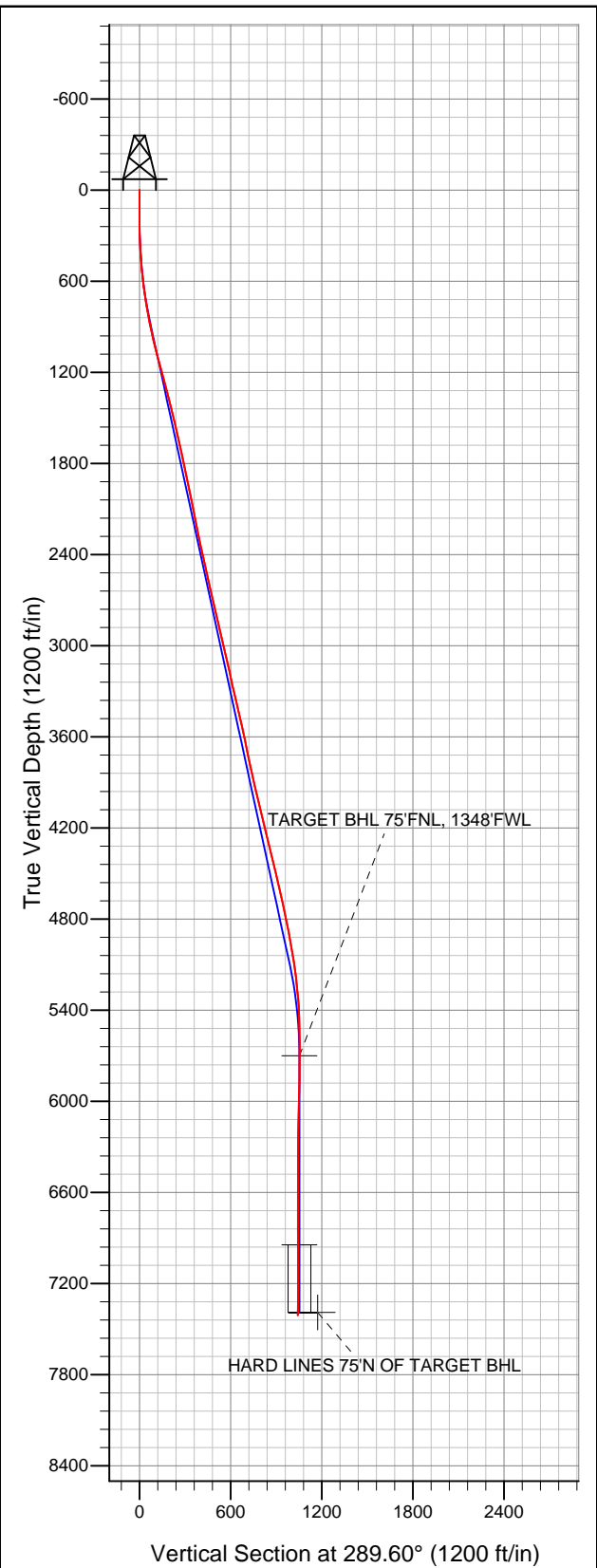
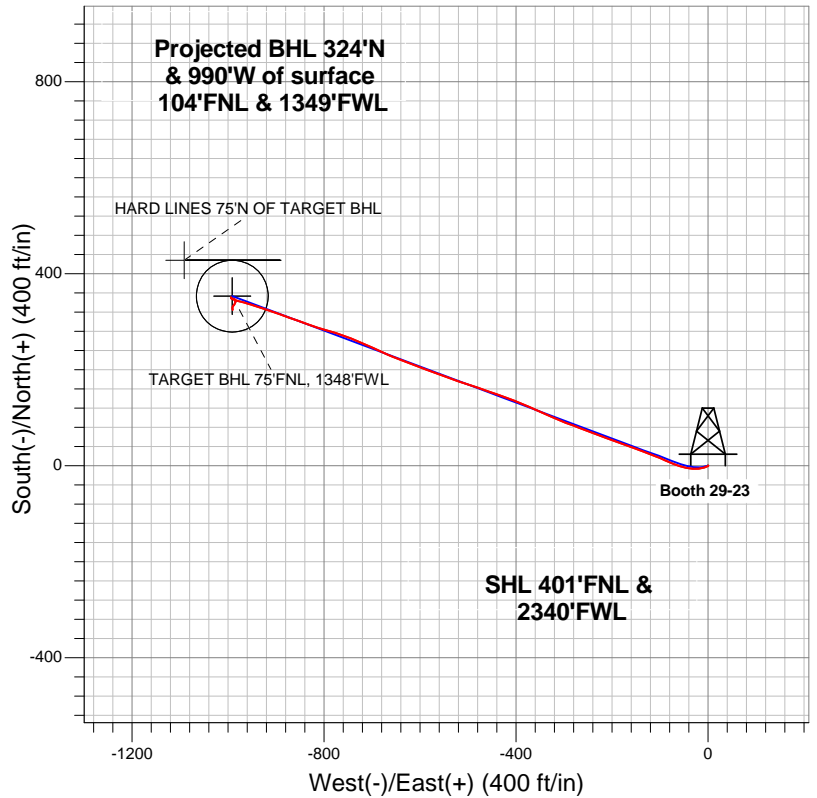


Well Name: Booth 29-23

Surface Location: Booth 10 Pad Sec.23-T7N-R65W
 North American Datum 1983 US State Plane 1983 Colorado Northern Zone
 Ground Elevation: 4897.0
 Northing 1449936.49 Easting 3241345.90 Latitude 40.565230 Longitude -104.631309 Slot
 Original Well Elev WELL @ 4913.0ft (Original Well Elev)



BAYSWATER EXPLORATION & PRODUCTION



LEGEND

- Booth 29-23, Wellbore #1, Plan #1 (5-07-12) V0
- Wellbore #1
- Survey #1

Final Survey Plot

Projected Final Survey -
 7523'MD & 7409'TVD @ 1042'VS
 1.10 deg Inc 160.90 deg AZ

Project: SEC.23-T7N-R65W
 Site: Booth 10 Pad Sec.23-T7N-R65W
 Well: Booth 29-23
 Plan: Wellbore #1



Directional

BAYSWATER EXPLORATION & PRODUCTION

SEC.23-T7N-R65W

Booth 10 Pad Sec.23-T7N-R65W

Booth 29-23

Wellbore #1

Survey: Survey #1

Standard Survey Report

07 November, 2012

Survey	Survey Data									
	Measured Depth (ft)	Inclination (°)	Azimuth (°)	Vertical Depth (ft)	+N/-S (ft)	+E/-W (ft)	Vertical Section (ft)	Dogleg Rate (°/100ft)	Build Rate (°/100ft)	Turn Rate (°/100ft)
	0.0	0.00	0.00	0.0	0.0	0.0	0.0	0.00	0.00	0.00
	90.0	0.40	84.00	90.0	0.0	0.3	-0.3	0.44	0.44	0.00
	176.0	0.20	164.50	176.0	-0.1	0.7	-0.6	0.48	-0.23	93.60
	267.0	1.50	240.30	267.0	-0.8	-0.3	0.0	1.61	1.43	83.30
	358.0	3.40	251.70	357.9	-2.3	-3.9	3.0	2.15	2.09	12.53
	448.0	5.40	252.30	447.6	-4.4	-10.5	8.4	2.22	2.22	0.67
	540.0	6.50	261.20	539.1	-6.5	-19.8	16.5	1.56	1.20	9.67
	635.0	7.40	274.60	633.4	-6.8	-31.2	27.1	1.95	0.95	14.11
	703.0	8.00	280.20	700.8	-5.6	-40.2	36.0	1.41	0.88	8.24
	797.0	10.00	286.20	793.7	-2.2	-54.5	50.6	2.35	2.13	6.38
	891.0	12.00	289.30	885.9	3.3	-71.6	68.5	2.22	2.13	3.30
	984.0	13.20	296.00	976.7	11.2	-90.2	88.7	2.03	1.29	7.20

Company:	BAYSWATER EXPLORATION & PRODUCTION	Local Co-ordinate Reference:	Well Booth 29-23
Project:	SEC.23-T7N-R65W	TVD Reference:	WELL @ 4913.0ft (Original Well Elev)
Site:	Booth 10 Pad Sec.23-T7N-R65W	MD Reference:	WELL @ 4913.0ft (Original Well Elev)
Well:	Booth 29-23	North Reference:	True
Wellbore:	Wellbore #1	Survey Calculation Method:	Minimum Curvature
Design:	Wellbore #1	Database:	Landmark

Survey									
Measured Depth (ft)	Inclination (°)	Azimuth (°)	Vertical Depth (ft)	+N/-S (ft)	+E/-W (ft)	Vertical Section (ft)	Dogleg Rate (°/100ft)	Build Rate (°/100ft)	Turn Rate (°/100ft)
1,078.0	14.70	291.10	1,067.9	20.2	-111.0	111.3	2.03	1.60	-5.21
1,172.0	15.10	290.60	1,158.8	28.8	-133.6	135.5	0.45	0.43	-0.53
1,265.0	14.90	289.50	1,248.6	37.0	-156.2	159.6	0.37	-0.22	-1.18
1,359.0	14.30	290.70	1,339.6	45.1	-178.4	183.2	0.71	-0.64	1.28
1,453.0	13.80	290.20	1,430.8	53.1	-199.8	206.1	0.55	-0.53	-0.53
1,546.0	13.10	290.00	1,521.2	60.6	-220.1	227.7	0.75	-0.75	-0.22
1,640.0	13.30	290.00	1,612.7	67.9	-240.3	249.2	0.21	0.21	0.00
1,734.0	12.90	292.30	1,704.3	75.6	-260.2	270.5	0.70	-0.43	2.45
1,827.0	12.00	289.20	1,795.1	82.7	-278.9	290.5	1.21	-0.97	-3.33
1,921.0	11.50	290.90	1,887.1	89.2	-296.9	309.6	0.65	-0.53	1.81
2,015.0	11.10	293.40	1,979.3	96.2	-314.0	328.0	0.67	-0.43	2.66
2,108.0	11.50	293.70	2,070.5	103.5	-330.7	346.2	0.43	0.43	0.32
2,202.0	11.50	295.50	2,162.6	111.3	-347.7	364.9	0.38	0.00	1.91
2,296.0	11.80	293.70	2,254.7	119.2	-365.0	383.8	0.50	0.32	-1.91
2,390.0	11.90	292.50	2,346.7	126.7	-382.7	403.0	0.28	0.11	-1.28
2,483.0	12.80	290.90	2,437.5	134.1	-401.2	422.9	1.04	0.97	-1.72
2,577.0	12.60	290.70	2,529.2	141.4	-420.5	443.6	0.22	-0.21	-0.21
2,671.0	12.60	289.30	2,620.9	148.4	-439.8	464.1	0.32	0.00	-1.49
2,764.0	13.30	289.40	2,711.6	155.3	-459.4	484.9	0.75	0.75	0.11
2,858.0	13.30	288.30	2,803.1	162.3	-479.9	506.6	0.27	0.00	-1.17
2,952.0	13.20	288.50	2,894.6	169.1	-500.4	528.1	0.12	-0.11	0.21
3,045.0	12.90	287.80	2,985.2	175.7	-520.3	549.1	0.36	-0.32	-0.75
3,139.0	13.20	290.60	3,076.7	182.7	-540.3	570.3	0.74	0.32	2.98
3,233.0	12.10	289.50	3,168.4	189.7	-559.7	590.9	1.20	-1.17	-1.17
3,326.0	12.80	291.30	3,259.3	196.7	-578.5	610.9	0.86	0.75	1.94
3,420.0	13.50	290.70	3,350.8	204.4	-598.4	632.3	0.76	0.74	-0.64
3,514.0	12.70	289.90	3,442.3	211.8	-618.4	653.6	0.87	-0.85	-0.85
3,607.0	12.50	292.00	3,533.1	219.0	-637.4	673.9	0.54	-0.22	2.26
3,701.0	12.80	290.70	3,624.8	226.5	-656.5	694.5	0.44	0.32	-1.38
3,795.0	11.90	295.30	3,716.7	234.3	-675.0	714.5	1.42	-0.96	4.89
3,888.0	11.30	294.30	3,807.8	242.2	-692.0	733.1	0.68	-0.65	-1.08
3,982.0	12.70	295.00	3,899.7	250.3	-709.8	752.6	1.50	1.49	0.74
4,076.0	13.30	292.90	3,991.3	258.9	-729.1	773.7	0.81	0.64	-2.23
4,169.0	14.00	290.60	4,081.7	267.0	-749.5	795.6	0.95	0.75	-2.47
4,263.0	13.90	287.60	4,172.9	274.4	-770.9	818.3	0.78	-0.11	-3.19
4,357.0	14.10	286.90	4,264.1	281.2	-792.6	841.0	0.28	0.21	-0.74
4,450.0	13.40	286.70	4,354.4	287.6	-813.8	863.1	0.75	-0.75	-0.22
4,544.0	13.10	290.60	4,445.9	294.5	-834.2	884.6	1.00	-0.32	4.15
4,638.0	12.90	289.90	4,537.5	301.8	-854.0	905.7	0.27	-0.21	-0.74
4,731.0	12.90	288.10	4,628.2	308.5	-873.6	926.5	0.43	0.00	-1.94
4,825.0	12.80	291.50	4,719.8	315.6	-893.3	947.4	0.81	-0.11	3.62
4,919.0	11.70	286.90	4,811.7	322.2	-912.1	967.3	1.56	-1.17	-4.89
5,012.0	10.80	289.00	4,902.9	327.8	-929.4	985.5	1.06	-0.97	2.26
5,106.0	9.80	287.40	4,995.4	333.0	-945.3	1,002.3	1.11	-1.06	-1.70
5,200.0	8.20	288.80	5,088.2	337.6	-959.3	1,017.0	1.72	-1.70	1.49
5,293.0	6.70	281.60	5,180.4	340.8	-970.9	1,029.0	1.90	-1.61	-7.74
5,387.0	5.70	287.90	5,273.9	343.4	-980.7	1,039.1	1.29	-1.06	6.70
5,481.0	3.80	291.80	5,367.6	345.9	-988.0	1,046.8	2.05	-2.02	4.15
5,574.0	1.70	318.20	5,460.4	348.1	-991.8	1,051.1	2.58	-2.26	28.39
5,668.0	1.10	320.30	5,554.4	349.9	-993.3	1,053.1	0.64	-0.64	2.23
5,762.0	0.50	221.50	5,648.4	350.2	-994.2	1,054.1	1.36	-0.64	-105.11
5,813.6	0.45	176.35	5,700.0	349.9	-994.3	1,054.1	0.71	-0.10	-87.57
TARGET BHL 75'FNL, 1348'FWL									

Company:	BAYSWATER EXPLORATION & PRODUCTION	Local Co-ordinate Reference:	Well Booth 29-23
Project:	SEC.23-T7N-R65W	TVD Reference:	WELL @ 4913.0ft (Original Well Elev)
Site:	Booth 10 Pad Sec.23-T7N-R65W	MD Reference:	WELL @ 4913.0ft (Original Well Elev)
Well:	Booth 29-23	North Reference:	True
Wellbore:	Wellbore #1	Survey Calculation Method:	Minimum Curvature
Design:	Wellbore #1	Database:	Landmark

Survey									
Measured Depth (ft)	Inclination (°)	Azimuth (°)	Vertical Depth (ft)	+N/-S (ft)	+E/-W (ft)	Vertical Section (ft)	Dogleg Rate (°/100ft)	Build Rate (°/100ft)	Turn Rate (°/100ft)
5,855.0	0.60	148.00	5,741.4	349.5	-994.2	1,053.8	0.71	0.36	-68.41
5,949.0	1.10	142.70	5,835.4	348.4	-993.4	1,052.7	0.54	0.53	-5.64
6,043.0	1.60	104.60	5,929.4	347.3	-991.6	1,050.6	1.06	0.53	-40.53
6,136.0	1.20	94.40	6,022.3	346.9	-989.3	1,048.4	0.51	-0.43	-10.97
6,230.0	1.30	98.60	6,116.3	346.7	-987.3	1,046.4	0.14	0.11	4.47
6,324.0	0.40	158.70	6,210.3	346.2	-986.1	1,045.1	1.23	-0.96	63.94
6,417.0	1.10	149.60	6,303.3	345.2	-985.6	1,044.2	0.76	0.75	-9.78
6,511.0	0.40	167.00	6,397.3	344.1	-985.0	1,043.4	0.77	-0.74	18.51
6,605.0	1.30	173.70	6,491.3	342.7	-984.8	1,042.7	0.96	0.96	7.13
6,698.0	1.70	195.10	6,584.3	340.3	-985.1	1,042.2	0.73	0.43	23.01
6,792.0	1.50	204.40	6,678.2	337.8	-986.0	1,042.2	0.35	-0.21	9.89
6,886.0	1.40	216.00	6,772.2	335.8	-987.1	1,042.6	0.33	-0.11	12.34
6,979.0	1.30	212.40	6,865.2	334.0	-988.4	1,043.1	0.14	-0.11	-3.87
7,058.5	1.13	217.75	6,944.7	332.6	-989.3	1,043.6	0.26	-0.21	6.73
TARGET CIRCLE 75'FNL & 1348'FWL									
7,073.0	1.10	218.90	6,959.1	332.4	-989.5	1,043.7	0.26	-0.21	7.94
7,167.0	1.10	210.20	7,053.1	330.9	-990.5	1,044.1	0.18	0.00	-9.26
7,260.0	1.00	187.20	7,146.1	329.3	-991.1	1,044.1	0.46	-0.11	-24.73
7,354.0	1.10	175.80	7,240.1	327.6	-991.1	1,043.6	0.25	0.11	-12.13
7,480.0	1.10	164.70	7,366.1	325.2	-990.7	1,042.4	0.17	0.00	-8.81
HARD LINES 75'N OF TARGET BHL									
7,523.0	1.10	160.90	7,409.1	324.4	-990.5	1,041.9	0.17	0.00	-8.84

Wellbore Targets									
Target Name	Dip Angle (°)	Dip Dir. (°)	TVD (ft)	+N/-S (ft)	+E/-W (ft)	Northing (ft)	Easting (ft)	Latitude	Longitude
- hit/miss target									
- Shape									
TARGET BHL 75'FNL	0.00	0.00	5,700.0	353.1	-991.3	1,450,279.81	3,240,351.20	40.566199	-104.634877
- survey misses target center by 4.4ft at 5813.6ft MD (5700.0 TVD, 349.9 N, -994.3 E)									
- Point									
TARGET CIRCLE 75'	0.00	0.00	6,945.0	353.1	-991.3	1,450,279.81	3,240,351.20	40.566199	-104.634877
- survey misses target center by 20.6ft at 7058.6ft MD (6944.7 TVD, 332.6 N, -989.3 E)									
- Circle (radius 75.0)									
HARD LINES 75'N OF	0.00	0.00	7,390.0	428.1	-1,091.3	1,450,353.87	3,240,250.49	40.566405	-104.635237
- survey misses target center by 145.9ft at 7480.0ft MD (7366.1 TVD, 325.2 N, -990.7 E)									
- Polygon									
Point 1			7,390.0	0.0	0.0	1,450,353.87	3,240,250.49		
Point 2			7,390.0	0.0	200.0	1,450,355.83	3,240,450.47		

Checked By: _____	Approved By: _____	Date: _____
-------------------	--------------------	-------------