



June 19, 2013

SENT VIA EMAIL READ RECIEPT REQUEST

**Holmes Eastern Company LLC.**

Attn: Jared Rush  
410 17<sup>th</sup> Street, Suite 1500  
Denver, CO 80202

RE: Notification of Horizontal Well Application to Drill  
Wells: Helton 5-63-27-3340BH  
Reservoir: Niobrara  
Township 5 North, Range 63 West, 6<sup>th</sup> P.M.  
Section 27: N/2S/2  
SHL: NW/4SW/4  
Weld County, Colorado

Dear Owner:

Bill Barrett Corporation (BBC) has filed an application with the State of Colorado Oil and Gas Conservation Commission requesting approval of a horizontal well for the referenced location as set forth in the attached application. BBC will land the bottom hole for the above referenced well 500' or greater from section line and conform to the 18° azimuth requirement.

BBC originally proposed the Proposed Spacing Unit (PSU) for the captioned well to encompass the S/2N/2, N/2S/2, however, after further review BBC hereby revises the PSU for the captioned well to encompass the N/2S/2 of Section 27, T5N, R63W, creating a 160 acre wellbore spacing unit for the Niobrara formation. This correction was made due to the existing setback rules of 460 feet. BBC intends to begin drilling operations before the end of the fourth quarter of 2013.

BBC requests that each working interest owner honor the original letter dated June 3, 2013 for APD approval timing. If the commission is in agreement and there are no objections within a 30-day period from the date of the original mailing (June 3, 2013), the Commission will administratively approve the application.

Should you have any questions, please call me directly at 303.312.8553.

Sincerely,  
Bill Barrett Corporation

*Wes DiGrappa*

Wes DiGrappa  
Land Administrator

Attachment

Pursuant to Rule 318A.e.(6) Order 1R-100 of the Colorado Oil and Gas Conservation Commission, the undersigned has received notice from Bill Barrett Corporation of its intention to drill and operate the Helton 5-63-27-3340BH well in T5N-R63W, Section 27, 6<sup>th</sup> P.M., Weld County, Colorado and the undersigned hereby waives the thirty (30) day notice requirement as provided by said rule.

BY: 

Printed Name: Tony Buckner - VP

Date: 6/20/13

Enclosure

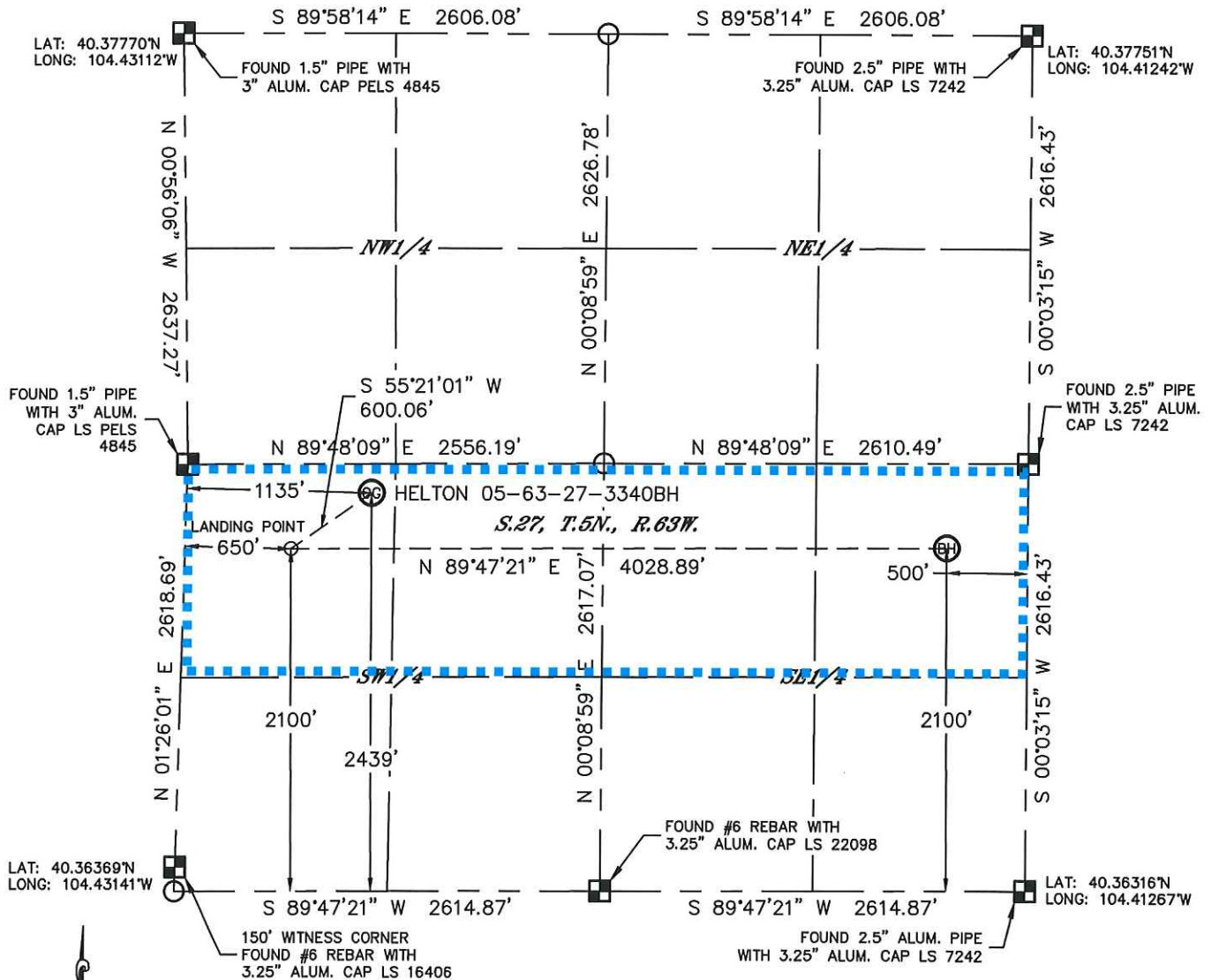


Lat40°, Inc. 1635 Foxtrail Drive, Suite 325 Loveland, CO 970-776-3321

# WELL LOCATION CERTIFICATE

THIS MAP DOES NOT REPRESENT A BOUNDARY SURVEY

SECTION: 27  
TOWNSHIP: 5N  
RANGE: 63W



In accordance with a request from Jeff Fandrich with BILL BARRETT CORPORATION Lat40°, Inc. has determined the surface location of the HELTON 05-63-27-3340BH to be 2439' from the SOUTH line and 1135' from the WEST line and the bottom hole to be 2100' from the SOUTH line and 500' from the EAST line as measured at right angles from the section lines of Section 27, Township 5 North, Range 63 West of the Sixth Principal Meridian, County of Weld, State of Colorado.

I hereby state that this Well Location Certificate was prepared by me, or under my direct supervision, that the fieldwork was completed on 5/3/2013, for and on behalf of BILL BARRETT CORPORATION That this is not a Land Survey Plat or an Improvement Survey Plat, and that it is not to be relied upon for establishment of fence, building, or other future improvement lines.

## NOTE:

- 1) Bearings shown are Grid Bearings of the Colorado State Plane Coordinate System, North Zone, North American Datum 1983/2007. The lineal dimensions as contained herein are based upon the "U.S. Survey Foot."
- 2) Ground elevations are based on an observed GPS elevation (NAVD 1988 DATUM).
- 3) IMPROVEMENTS: See LOCATION DRAWING for all visible improvements within 400' of disturbed area.
- 4) SURFACE USE: RANGELAND
- 5) INSTRUMENT OPERATOR: BRIAN ROTTINGHAUS

## NOTE

According to Colorado law, you must commence any legal action based upon any defect in this W.L.C. within three years after you discover such defect. In no event, may any action based upon any defect in this survey be commenced more than ten years after the date of the certificate shown hereon. (13-80-105 C.R.S.)

## LEGEND

- = ALIQUOT MONUMENT AS DESCRIBED
- = CALCULATED POSITION

## SURFACE LOCATION

LAT: 40.36994°N (40°22'11.8"N)  
LONG: 104.42703°W (104°25'37.3"W)  
LAT: 40.36996°N (NAD27)  
LONG: 104.42652°W (NAD27)  
PDOP: 2.0  
ELEV: 4542'  
1/4, 1/4: NW1/4SW1/4  
NEAREST PROPERTY LINE: 367' EAST

## LANDING POINT

LAT: 40.36902°N (40°22'08.5"N)  
LONG: 104.42882°W (104°25'43.7"W)  
LAT: 40.36904°N (NAD27)  
LONG: 104.42831°W (NAD27)

## BOTTOM HOLE

LAT: 40.36893°N (40°22'08.1"N)  
LONG: 104.41436°W (104°24'51.7"W)  
LAT: 40.36895°N (NAD27)  
LONG: 104.41385°W (NAD27)



Kyle E. Rutz—On behalf of  
Colorado Licensed Professional  
Land Surveyor No. 38307

5/22/2013  
PROJECT#: 2013048





June 19, 2013

SENT VIA EMAIL READ RECIEPT REQUEST

**Bonanza Creek Energy Operating Company, LLC.**

Attn: Jared Rush  
410 17<sup>th</sup> Street, Suite 1500  
Denver, CO 80202

RE: Notification of Horizontal Well Application to Drill  
Wells: Helton 5-63-27-3340BH  
Reservoir: Niobrara  
Township 5 North, Range 63 West, 6<sup>th</sup> P.M.  
Section 27: N/2S/2  
SHL: NW/4SW/4  
Weld County, Colorado

Dear Owner:

Bill Barrett Corporation (BBC) has filed an application with the State of Colorado Oil and Gas Conservation Commission requesting approval of a horizontal well for the referenced location as set forth in the attached application. BBC will land the bottom hole for the above referenced well 500' or greater from section line and conform to the 18° azimuth requirement.

BBC originally proposed the Proposed Spacing Unit (PSU) for the captioned well to encompass the S/2N/2, N/2S/2, however, after further review BBC hereby revises the PSU for the captioned well to encompass the N/2S/2 of Section 27, T5N, R63W, creating a 160 acre wellbore spacing unit for the Niobrara formation. This correction was made due to the existing setback rules of 460 feet. BBC intends to begin drilling operations before the end of the fourth quarter of 2013.

BBC requests that each working interest owner honor the original letter dated June 3, 2013 for APD approval timing. If the commission is in agreement and there are no objections within a 30-day period from the date of the original mailing (June 3, 2013), the Commission will administratively approve the application.

Should you have any questions, please call me directly at 303.312.8553.

Sincerely,  
Bill Barrett Corporation

*Wes DiGrappa*

Wes DiGrappa  
Land Administrator

Attachment

Pursuant to Rule 318A.e.(6) Order 1R-100 of the Colorado Oil and Gas Conservation Commission, the undersigned has received notice from Bill Barrett Corporation of its intention to drill and operate the Helton 5-63-27-3340BH well in T5N-R63W, Section 27, 6<sup>th</sup> P.M., Weld County, Colorado and the undersigned hereby waives the thirty (30) day notice requirement as provided by said rule.

BY: Tony Bucknow

Printed Name: Tony Bucknow - VP

Date: 6/20/13

Enclosure

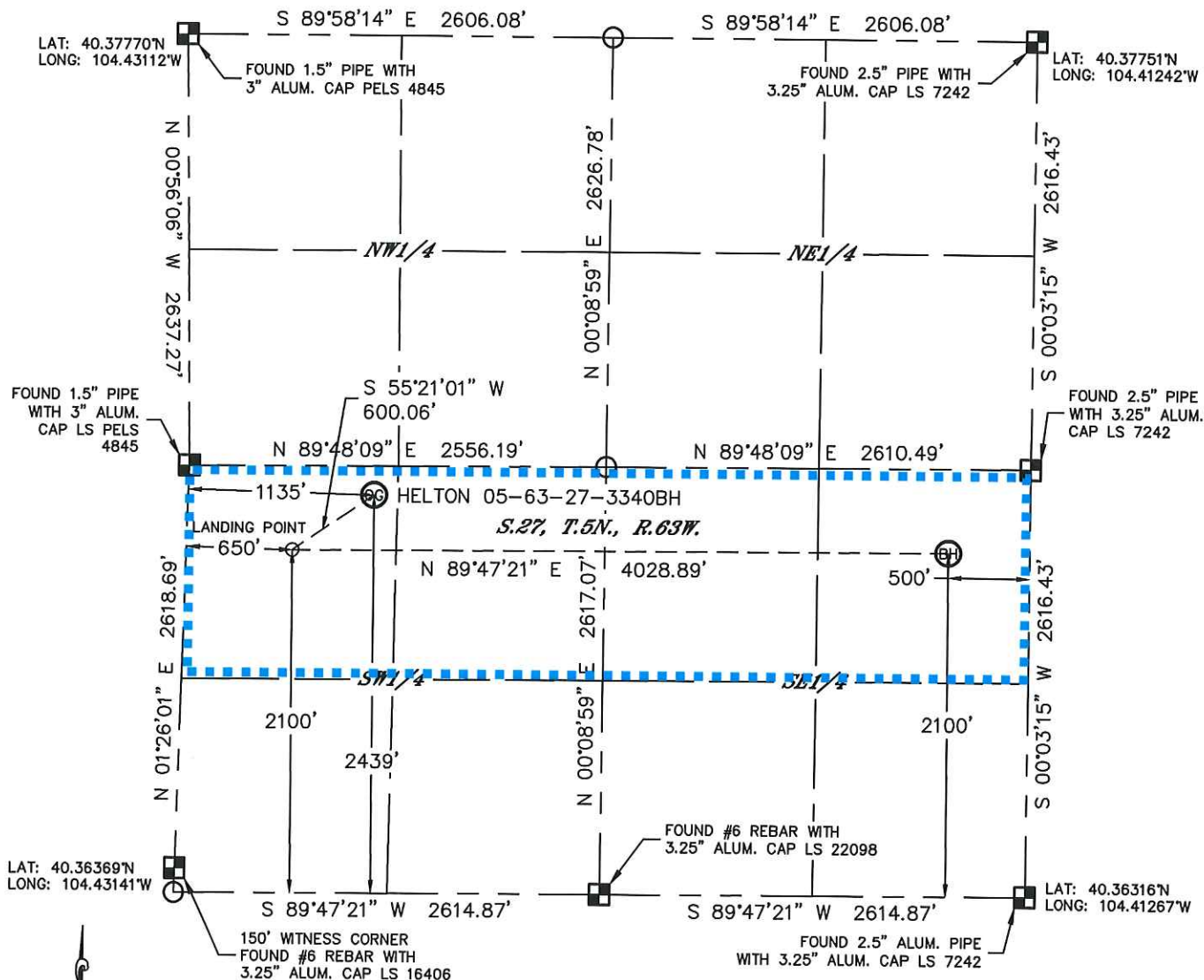


Lat40°, Inc. 1635 Foxtrail Drive, Suite 325 Loveland, CO 970-776-3321

# WELL LOCATION CERTIFICATE

THIS MAP DOES NOT REPRESENT A BOUNDARY SURVEY

SECTION: 27  
TOWNSHIP: 5N  
RANGE: 63W



In accordance with a request from Jeff Fandrich with BILL BARRETT CORPORATION Lat40°, Inc. has determined the surface location of the HELTON 05-63-27-3340BH to be 2439' from the SOUTH line and 1135' from the WEST line and the bottom hole to be 2100' from the SOUTH line and 500' from the EAST line as measured at right angles from the section lines of Section 27, Township 5 North, Range 63 West of the Sixth Principal Meridian, County of Weld, State of Colorado.

I hereby state that this Well Location Certificate was prepared by me, or under my direct supervision, that the fieldwork was completed on 5/3/2013, for and on behalf of BILL BARRETT CORPORATION. That this is not a Land Survey Plat or an Improvement Survey Plat, and that it is not to be relied upon for establishment of fence, building, or other future improvement lines.

## NOTE:

- 1) Bearings shown are Grid Bearings of the Colorado State Plane Coordinate System, North Zone, North American Datum 1983/2007. The lineal dimensions as contained herein are based upon the "U.S. Survey Foot."
- 2) Ground elevations are based on an observed GPS elevation (NAVD 1988 DATUM).
- 3) IMPROVEMENTS: See LOCATION DRAWING for all visible improvements within 400' of disturbed area.
- 4) SURFACE USE: RANGELAND
- 5) INSTRUMENT OPERATOR: BRIAN ROTTINGHAUS

## NOTE

According to Colorado law, you must commence any legal action based upon any defect in this W.L.C. within three years after you discover such defect. In no event, may any action based upon any defect in this survey be commenced more than ten years after the date of the certificate shown hereon. (13-80-105 C.R.S.)

## LEGEND

- = ALIQUOT MONUMENT AS DESCRIBED
- = CALCULATED POSITION

## SURFACE LOCATION

LAT: 40.36994°N (40°22'11.8"N)  
LONG: 104.42703°W (104°25'37.3"W)  
LAT: 40.36996°N (NAD27)  
LONG: 104.42652°W (NAD27)  
PDOP: 2.0  
ELEV: 4542'  
1/4, 1/4: NW1/4SW1/4  
NEAREST PROPERTY LINE: 367' EAST  
LANDING POINT  
LAT: 40.36902°N (40°22'08.5"N)  
LONG: 104.42882°W (104°25'43.7"W)  
LAT: 40.36904°N (NAD27)  
LONG: 104.42831°W (NAD27)

## BOTTOM HOLE

LAT: 40.36893°N (40°22'08.1"N)  
LONG: 104.41436°W (104°24'51.7"W)  
LAT: 40.36895°N (NAD27)  
LONG: 104.41385°W (NAD27)



Kyle E. Rutz—On behalf of  
Colorado Licensed Professional Land Surveyor No. 38307  
5/22/2013  
PROJECT#: 2013048





June 3, 2013

**SENT VIA CERTIFIED MAIL**  
7012 2210 0001 8535 1310

**Holmes Eastern Company LLC.**

Attn: Jared Rush  
410 17<sup>th</sup> Street, Suite 1500  
Denver, CO 80202

RE: Notification of Horizontal Well Application to Drill  
Wells: Helton 5-63-27-4956BH  
Reservoir: Niobrara  
Township 5 North, Range 63 West, 6<sup>th</sup> P.M.  
Section 27: S/2  
SHL: NW/4SW/4  
Weld County, Colorado

Dear Owner:

Bill Barrett Corporation (BBC) has filed an application with the State of Colorado Oil and Gas Conservation Commission requesting approval of a horizontal well for the referenced location as set forth in the attached application. BBC will land the bottom hole for the above referenced well 500' or greater from section line and conform to the 18° azimuth requirement.

BBC's proposed wellbore spacing unit consists of the S/2 of Section 27, T5N, R63W, creating a 320 acre wellbore spacing unit for the Niobrara formation. BBC intends to begin drilling operations before the end of the fourth quarter of 2013.

If the commission is in agreement and there are no objections within a 30-day period from the date of mailing, the Commission will administratively approve the application.

Should you have any questions, please call me directly at 303.312.8553.

Sincerely,  
Bill Barrett Corporation

Wes DiGrappa  
Land Administrator

Attachment

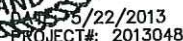
Pursuant to Rule 318A.e.(6) Order 1R-100 of the Colorado Oil and Gas Conservation Commission, the undersigned has received notice from Bill Barrett Corporation of its intention to drill and operate the Helton 5-63-27-4956BH well in T5N-R63W, Section 27, 6<sup>th</sup> P.M., Weld County, Colorado and the undersigned hereby waives the thirty (30) day notice requirement as provided by said rule.

BY: Tony Buchanan

Printed Name: Tony Buchanan

Date: 6/20/13  
Enclosure







June 3, 2013

**SENT VIA CERTIFIED MAIL**  
7012 2210 0001 8535 1327

**Bonanza Creek Energy Operating Company, LLC.**  
Attn: Jared Rush  
410 17<sup>th</sup> Street, Suite 1500  
Denver, CO 80202

RE: Notification of Horizontal Well Application to Drill  
Wells: Helton 5-63-27-4956BH  
Reservoir: Niobrara  
Township 5 North, Range 63 West, 6<sup>th</sup> P.M.  
Section 27: S/2  
SHL: NW/4SW/4  
Weld County, Colorado

Dear Owner:

Bill Barrett Corporation (BBC) has filed an application with the State of Colorado Oil and Gas Conservation Commission requesting approval of a horizontal well for the referenced location as set forth in the attached application. BBC will land the bottom hole for the above referenced well 500' or greater from section line and conform to the 18° azimuth requirement.

BBC's proposed wellbore spacing unit consists of the S/2 of Section 27, T5N, R63W, creating a 320 acre wellbore spacing unit for the Niobrara formation. BBC intends to begin drilling operations before the end of the fourth quarter of 2013.

If the commission is in agreement and there are no objections within a 30-day period from the date of mailing, the Commission will administratively approve the application.

Should you have any questions, please call me directly at 303.312.8553.

Sincerely,  
Bill Barrett Corporation

A handwritten signature in blue ink, appearing to read 'Wes DiGrappa', with a long horizontal line extending to the right.

Wes DiGrappa  
Land Administrator

Attachment

Pursuant to Rule 318A.e.(6) Order 1R-100 of the Colorado Oil and Gas Conservation Commission, the undersigned has received notice from Bill Barrett Corporation of its intention to drill and operate the Helton 5-63-27-4956BH well in T5N-R63W, Section 27, 6<sup>th</sup> P.M., Weld County, Colorado and the undersigned hereby waives the thirty (30) day notice requirement as provided by said rule.

BY: Tony Buckman

Printed Name: Tony Buckman - VP

Date: 6/20/13

Enclosure



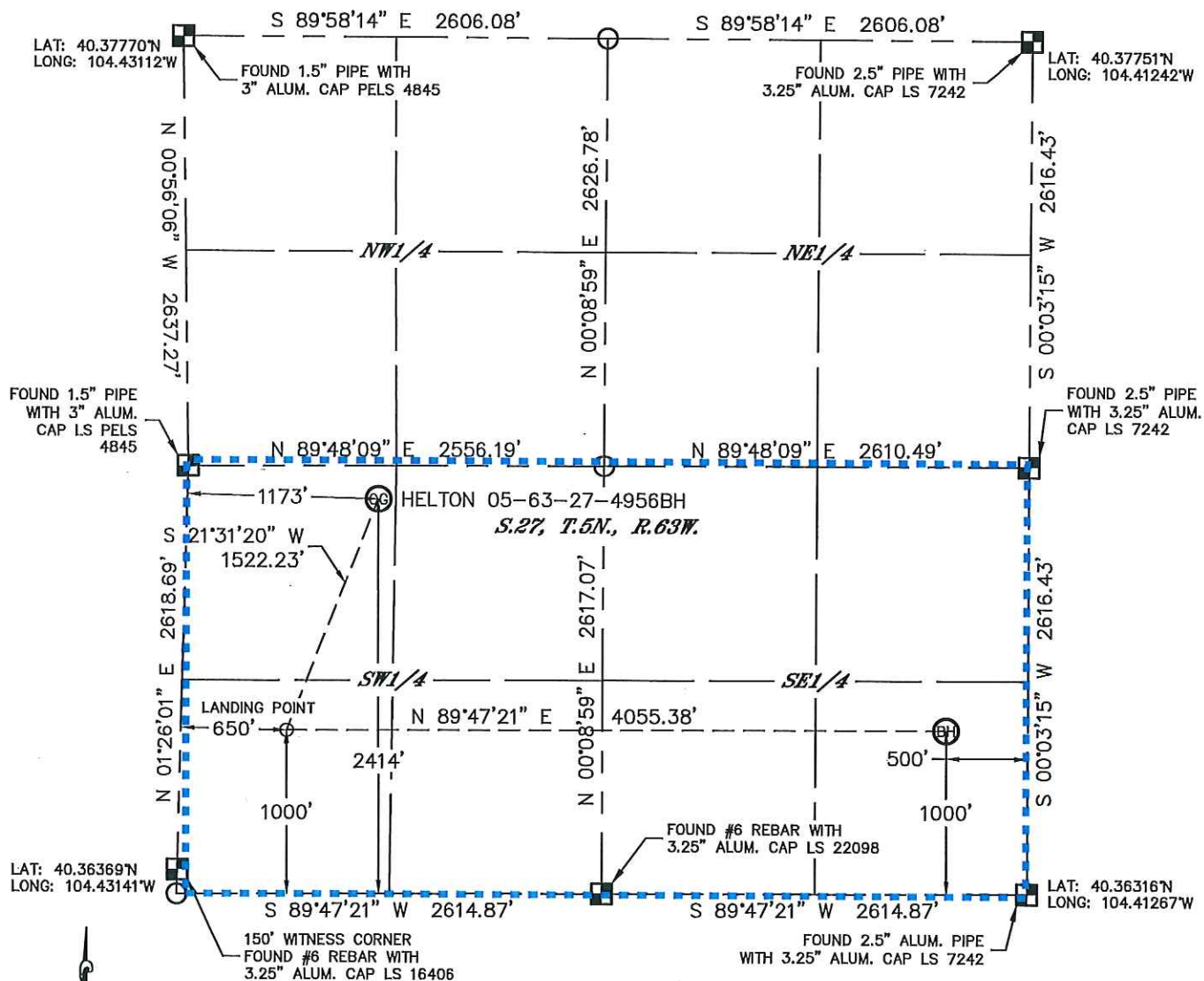


Lat40°, Inc. 1635 Foxtrail Drive, Suite 325 Loveland, CO 970-776-3321

# WELL LOCATION CERTIFICATE

THIS MAP DOES NOT REPRESENT A BOUNDARY SURVEY

SECTION: 27  
TOWNSHIP: 5N  
RANGE: 63W



In accordance with a request from Jeff Fandrich with BILL BARRETT CORPORATION

Lat40°, Inc. has determined the surface location of the HELTON 05-63-27-4956BH to be 2414' from the SOUTH line and 1173' from the WEST line and the bottom hole to be 1000' from the SOUTH line and 500' from the EAST line as measured at right angles from the section lines of Section 27, Township 5 North, Range 63 West of the Sixth Principal Meridian, County of Weld, State of Colorado.

I hereby state that this Well Location Certificate was prepared by me, or under my direct supervision, that the fieldwork was completed on 5/3/2013, for and on behalf of BILL BARRETT CORPORATION. That this is not a Land Survey Plat or an Improvement Survey Plat, and that it is not to be relied upon for establishment of fence, building, or other future Improvement lines.

## NOTE:

- 1) Bearings shown are Grid Bearings of the Colorado State Plane Coordinate System, North Zone, North American Datum 1983/2007. The lineal dimensions as contained herein are based upon the "U.S. Survey Foot."
- 2) Ground elevations are based on an observed GPS elevation (NAVD 1988 DATUM).
- 3) IMPROVEMENTS: See LOCATION DRAWING for all visible improvements within 400' of disturbed area.
- 4) SURFACE USE: RANGELAND
- 5) INSTRUMENT OPERATOR: BRIAN ROTTINGHAUS

## NOTE

According to Colorado law, you must commence any legal action based upon any defect in this W.L.C. within three years after you discover such defect. In no event, may any action based upon any defect in this survey be commenced more than ten years after the date of the certificate shown hereon. (13-80-105 C.R.S.)

## SURFACE LOCATION

LAT: 40.36987°N (40°22'11.5"N)  
LONG: 104.42690°W (104°25'36.8"W)  
LAT: 40.36989°N (NAD27)  
LONG: 104.42639°W (NAD27)  
PDOP: 2.0  
ELEV: 4542'  
1/4, 1/4: NW1/4SW1/4  
NEAREST PROPERTY LINE: 330' EAST

## LANDING POINT

LAT: 40.36601°N (40°21'57.6"N)  
LONG: 104.42896°W (104°25'44.3"W)  
LAT: 40.36602°N (NAD27)  
LONG: 104.42845°W (NAD27)

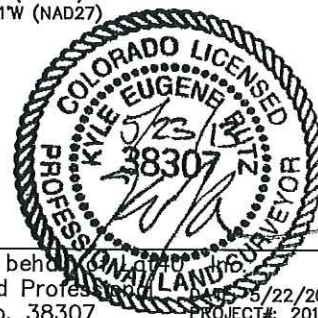
## BOTTOM HOLE

LAT: 40.36591°N (40°21'57.3"N)  
LONG: 104.41442°W (104°24'51.9"W)  
LAT: 40.36593°N (NAD27)  
LONG: 104.41391°W (NAD27)

## LEGEND

- = ALIQUOT MONUMENT AS DESCRIBED
- = CALCULATED POSITION

Kyle E. Rutz-On behalf of  
Colorado Licensed Professional Land Surveyor No. 38307  
DATE: 5/22/2013  
PROJECT#: 2013048







June 3, 2013

**SENT VIA CERTIFIED MAIL**  
7012 2210 0001 8535 1310

**Holmes Eastern Company LLC.**

Attn: Jared Rush  
410 17<sup>th</sup> Street, Suite 1500  
Denver, CO 80202

RE: Notification of Horizontal Well Application to Drill  
Wells: Helton 5-63-27-4841CH  
Reservoir: Niobrara  
Township 5 North, Range 63 West, 6<sup>th</sup> P.M.  
Section 27: S/2  
SHL: NW/4SW/4  
Weld County, Colorado

Dear Owner:

Bill Barrett Corporation (BBC) has filed an application with the State of Colorado Oil and Gas Conservation Commission requesting approval of a horizontal well for the referenced location as set forth in the attached application. BBC will land the bottom hole for the above referenced well 500' or greater from section line and conform to the 18° azimuth requirement.

BBC's proposed wellbore spacing unit consists of the S/2 of Section 27, T5N, R63W, creating a 320 acre wellbore spacing unit for the Niobrara formation. BBC intends to begin drilling operations before the end of the fourth quarter of 2013.

If the commission is in agreement and there are no objections within a 30-day period from the date of mailing, the Commission will administratively approve the application.

Should you have any questions, please call me directly at 303.312.8553.

Sincerely,  
Bill Barrett Corporation



Wes DiGrappa  
Land Administrator

Attachment

Pursuant to Rule 318A.e.(6) Order 1R-100 of the Colorado Oil and Gas Conservation Commission, the undersigned has received notice from Bill Barrett Corporation of its intention to drill and operate the Helton 5-63-27-4841CH well in T5N-R63W, Section 27, 6<sup>th</sup> P.M., Weld County, Colorado and the undersigned hereby waives the thirty (30) day notice requirement as provided by said rule.

BY: Tony Buchanan

Printed Name: Tony Buchanan - VP

Date: 6/20/13  
Enclosure

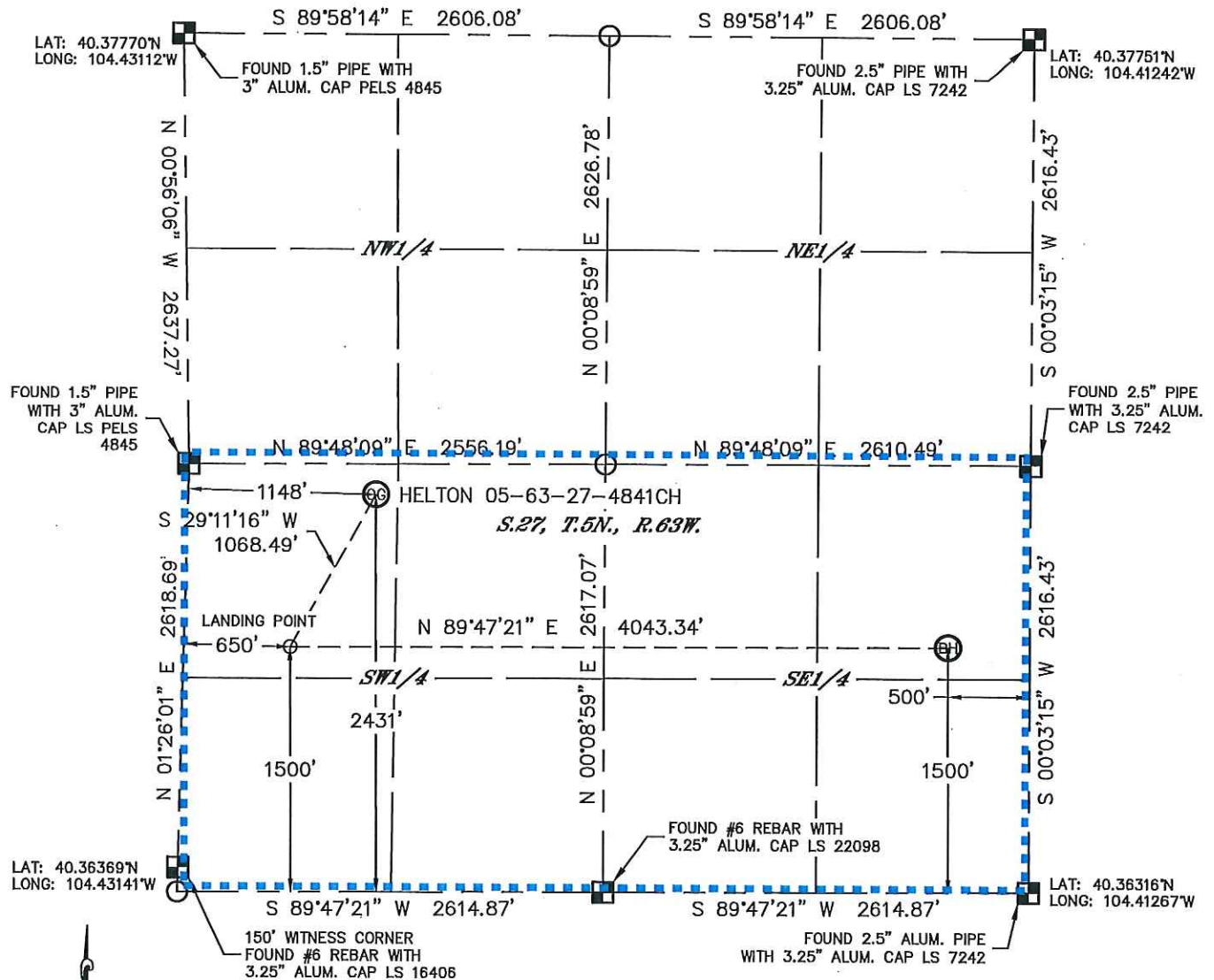


Lat40°, Inc. 1635 Foxtrail Drive, Suite 325 Loveland, CO 970-776-3321

# WELL LOCATION CERTIFICATE

THIS MAP DOES NOT REPRESENT A BOUNDARY SURVEY

SECTION: 27  
TOWNSHIP: 5N  
RANGE: 63W



In accordance with a request from Jeff Fandrich with BILL BARRETT CORPORATION

Lat40°, Inc. has determined the surface location of the HELTON 05-63-27-4841CH to be 2431' from the SOUTH line and 1148' from the WEST line and the bottom hole to be 1500' from the SOUTH line and 500' from the EAST line as measured at right angles from the section lines of Section 27, Township 5 North, Range 63 West of the Sixth Principal Meridian, County of Weld, State of Colorado.

I hereby state that this Well Location Certificate was prepared by me, or under my direct supervision, that the fieldwork was completed on 5/3/2013, for and on behalf of BILL BARRETT CORPORATION. That this is not a Land Survey Plat or an Improvement Survey Plat, and that it is not to be relied upon for establishment of fence, building, or other future Improvement lines.

## NOTE:

- 1) Bearings shown are Grid Bearings of the Colorado State Plane Coordinate System, North Zone, North American Datum 1983/2007. The lineal dimensions as contained herein are based upon the "U.S. Survey Foot."
- 2) Ground elevations are based on an observed GPS elevation (NAVD 1988 DATUM).
- 3) IMPROVEMENTS: See LOCATION DRAWING for all visible improvements within 400' of disturbed area.
- 4) SURFACE USE: RANGELAND
- 5) INSTRUMENT OPERATOR: BRIAN ROTTINGHAUS

## NOTE

According to Colorado law, you must commence any legal action based upon any defect in this W.L.C. within three years after you discover such defect. In no event, may any action based upon any defect in this survey be commenced more than ten years after the date of the certificate shown hereon. (13-80-105 C.R.S.)

## LEGEND

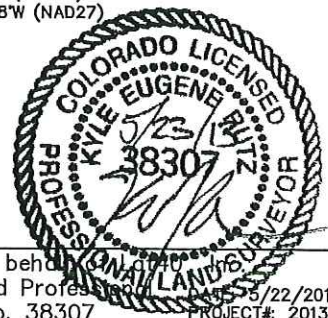
- = ALIQUOT MONUMENT AS DESCRIBED
- = CALCULATED POSITION

## SURFACE LOCATION

LAT: 40.36992°N (40°22'11.7"N)  
LONG: 104.42699°W (104°25'37.2"W)  
LAT: 40.36994°N (NAD27)  
LONG: 104.42648°W (NAD27)  
PDOP: 2.0  
ELEV: 4542'  
1/4, 1/4: NW1/4SW1/4  
NEAREST PROPERTY LINE: 354' EAST  
LANDING POINT  
LAT: 40.36738°N (40°22'02.6"N)  
LONG: 104.42890°W (104°25'44.0"W)  
LAT: 40.36740°N (NAD27)  
LONG: 104.42839°W (NAD27)

## BOTTOM HOLE

LAT: 40.36728°N (40°22'02.2"N)  
LONG: 104.41439°W (104°24'51.8"W)  
LAT: 40.36730°N (NAD27)  
LONG: 104.41388°W (NAD27)



Kyle E. Rutz—On behalf of  
Colorado Licensed Professional Land Surveyor No. 38307  
DATE: 5/22/2013  
PROJECT#: 2013048



June 3, 2013

**SENT VIA CERTIFIED MAIL**

7012 2210 0001 8535 1327

**Bonanza Creek Energy Operating Company, LLC.**

Attn: Jared Rush  
410 17<sup>th</sup> Street, Suite 1500  
Denver, CO 80202

RE: Notification of Horizontal Well Application to Drill  
Wells: Helton 5-63-27-4841CH  
Reservoir: Niobrara  
Township 5 North, Range 63 West, 6<sup>th</sup> P.M.  
Section 27: S/2  
SHL: NW/4SW/4  
Weld County, Colorado

Dear Owner:

Bill Barrett Corporation (BBC) has filed an application with the State of Colorado Oil and Gas Conservation Commission requesting approval of a horizontal well for the referenced location as set forth in the attached application. BBC will land the bottom hole for the above referenced well 500' or greater from section line and conform to the 18° azimuth requirement.

BBC's proposed wellbore spacing unit consists of the S/2 of Section 27, T5N, R63W, creating a 320 acre wellbore spacing unit for the Niobrara formation. BBC intends to begin drilling operations before the end of the fourth quarter of 2013.

If the commission is in agreement and there are no objections within a 30-day period from the date of mailing, the Commission will administratively approve the application.

Should you have any questions, please call me directly at 303.312.8553.

Sincerely,  
Bill Barrett Corporation

Wes DiGrappa  
Land Administrator

Attachment



Pursuant to Rule 318A.c.(6) Order 1R-100 of the Colorado Oil and Gas Conservation Commission, the undersigned has received notice from Bill Barrett Corporation of its intention to drill and operate the Helton 5-63-27-4841CH well in T5N-R63W, Section 27, 6<sup>th</sup> P.M., Weld County, Colorado and the undersigned hereby waives the thirty (30) day notice requirement as provided by said rule.

BY: 

Printed Name: Tony Buchanan - VP

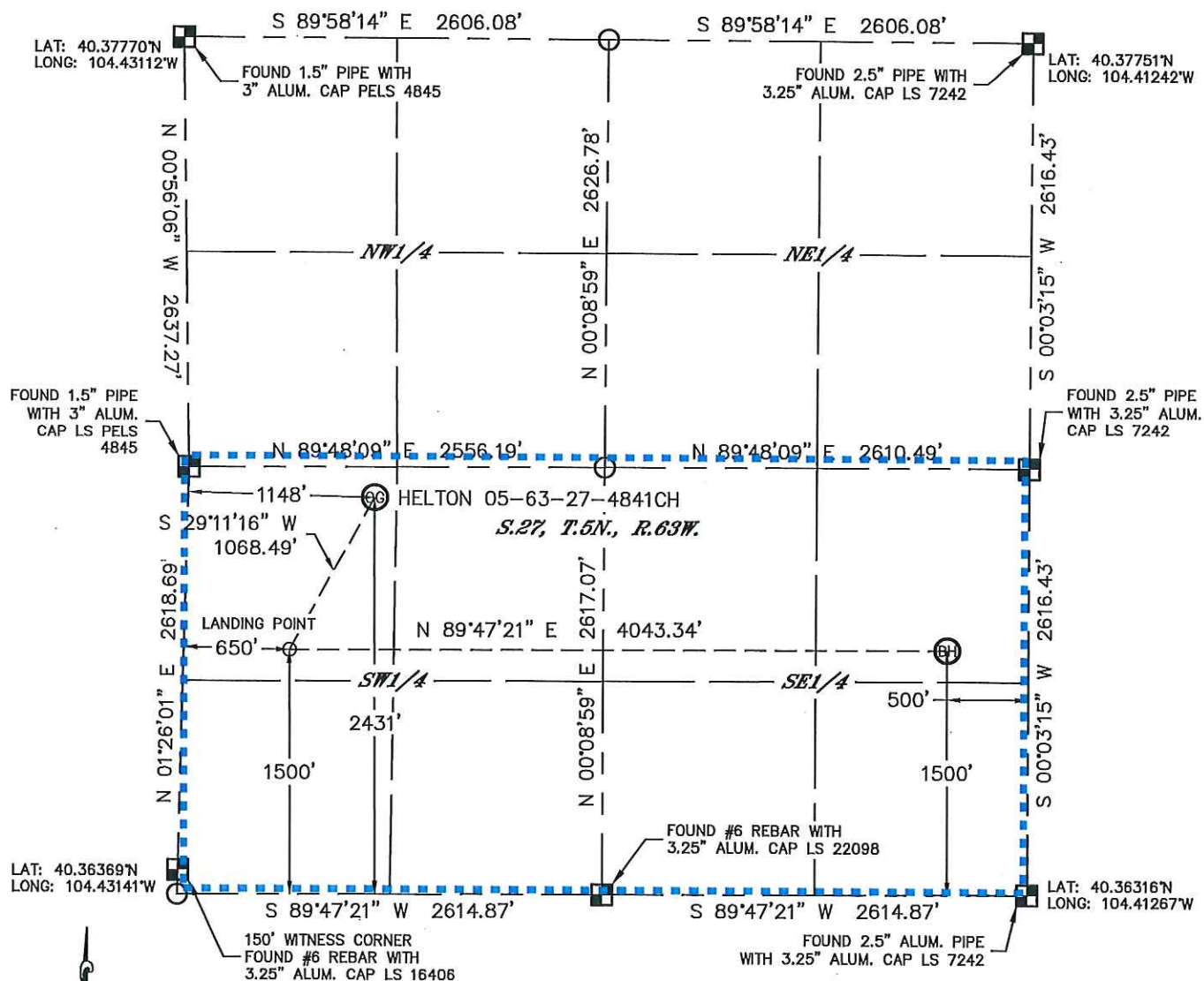
Date: 6/20/13  
Enclosure

Lat40°, Inc. 1635 Foxtrail Drive, Suite 325 Loveland, CO 970-776-3321

# WELL LOCATION CERTIFICATE

THIS MAP DOES NOT REPRESENT A BOUNDARY SURVEY

SECTION: 27  
TOWNSHIP: 5N  
RANGE: 63W



In accordance with a request from Jeff Fandrich with BILL BARRETT CORPORATION, Lat40', Inc. has determined the surface location of the HELTON 05-63-27-4841CH to be 2431' from the SOUTH line and 1148' from the WEST line and the bottom hole to be 1500' from the SOUTH line and 500' from the EAST line as measured at right angles from the section lines of Section 27, Township 5 North, Range 63 West of the Sixth Principal Meridian, County of Weld, State of Colorado.

I hereby state that this Well Location Certificate was prepared by me, or under my direct supervision, that the fieldwork was completed on 5/3/2013, for and on behalf of BILL BARRETT CORPORATION. That this is not a Land Survey Plat or an Improvement Survey Plat, and that it is not to be relied upon for establishment of fence, building, or other future Improvement lines.

**NOTE:**

- 1) Bearings shown are Grid Bearings of the Colorado State Plane Coordinate System, North Zone, North American Datum 1983/2007. The lined dimensions as contained herein are based upon the "U.S. Survey Feet."
- 2) Ground elevations are based on an observed GPS elevation (NAVD 1988 DATUM).
- 3) IMPROVEMENTS: See LOCATION DRAWING for all visible improvements within 400' of disturbed area.
- 4) SURFACE USE: RANGELAND
- 5) INSTRUMENT OPERATOR: BRIAN ROTTINGHAUS

### NOTE

According to Colorado law, you must commence any legal action based upon any defect in this W.L.C. within three years after you discover such defect. In no event, may any action based upon any defect in this survey be commenced more than ten years after the date of the certificate shown hereon. (13-80-105 C.R.S.)

SURFACE LOCATION

LAT: 40.36992°N (40°22'11.7"N)  
 LONG: 104.42699°W (104°25'37.2"W)  
 LAT: 40.36994°N (NAD27)  
 LONG: 104.42648°W (NAD27)  
 PDOP: 2.0  
 ELEV: 4542'  
 1/4,1/4: NW1/4SW1/4  
 NEAREST PROPERTY LINE: 354' EAST  
LANDING POINT  
 LAT: 40.36738°N (40°22'02.6"N)  
 LONG: 104.42890°W (104°25'44.0"W)  
 LAT: 40.36740°N (NAD27)  
 LONG: 104.42839°W (NAD27)


BOTTOM HOLE

LAT: 40.36728°N (40°22'02.2"N)  
LONG: 104.41439°W (104°24'51.8"W)  
LAT: 40.36730°N (NAD27)  
LONG: 104.41388°W (NAD27)

## LANDING POINT

LAT: 40.36738°N (40°22'02.6"N)  
LONG: 104.42890°W (104°25'44.0"W)  
LAT: 40.36740°N (NAD27)  
LONG: 104.42839°W (NAD27)

### LEGEND

-  = ALIQUOT MONUMENT AS DESCRIBED  
 = CALCULATED POSITION

Kyle E. Rutz—On behalf of  
Colorado Licensed Professional  
Land Surveyor No. 38307



DATE: 5/22/2013  
PROJECT#: 2013048



June 3, 2013

**SENT VIA CERTIFIED MAIL**  
7012 2210 0001 8535 1310

**Holmes Eastern Company LLC.**

Attn: Jared Rush  
410 17<sup>th</sup> Street, Suite 1500  
Denver, CO 80202

RE: Notification of Horizontal Well Application to Drill  
Wells: Helton 5-63-27-4956CDH  
Reservoir: Codell  
Township 5 North, Range 63 West, 6<sup>th</sup> P.M.  
Section 27: S/2  
SHL: NW/4SW/4  
Weld County, Colorado

Dear Owner:

Bill Barrett Corporation (BBC) has filed an application with the State of Colorado Oil and Gas Conservation Commission requesting approval of a horizontal well for the referenced location as set forth in the attached application. BBC will land the bottom hole for the above referenced well 500' or greater from section line and conform to the 18° azimuth requirement.

BBC's proposed wellbore spacing unit consists of the S/2 of Section 27, T5N, R63W, creating a 320 acre wellbore spacing unit for the Codell formation. BBC intends to begin drilling operations before the end of the fourth quarter of 2013.

If the commission is in agreement and there are no objections within a 30-day period from the date of mailing, the Commission will administratively approve the application.

Should you have any questions, please call me directly at 303.312.8553.

Sincerely,  
Bill Barrett Corporation

Wes DiGrappa  
Land Administrator

Attachment

Pursuant to Rule 318A.e.(6) Order 1R-100 of the Colorado Oil and Gas Conservation Commission, the undersigned has received notice from Bill Barrett Corporation of its intention to drill and operate the Helton 5-63-27-4956CDH well in T5N-R63W, Section 27, 6<sup>th</sup> P.M., Weld County, Colorado and the undersigned hereby waives the thirty (30) day notice requirement as provided by said rule.

BY: Tony Buchanan

Printed Name: Tony Buchanan - VP

Date: 6/20/13  
Enclosure



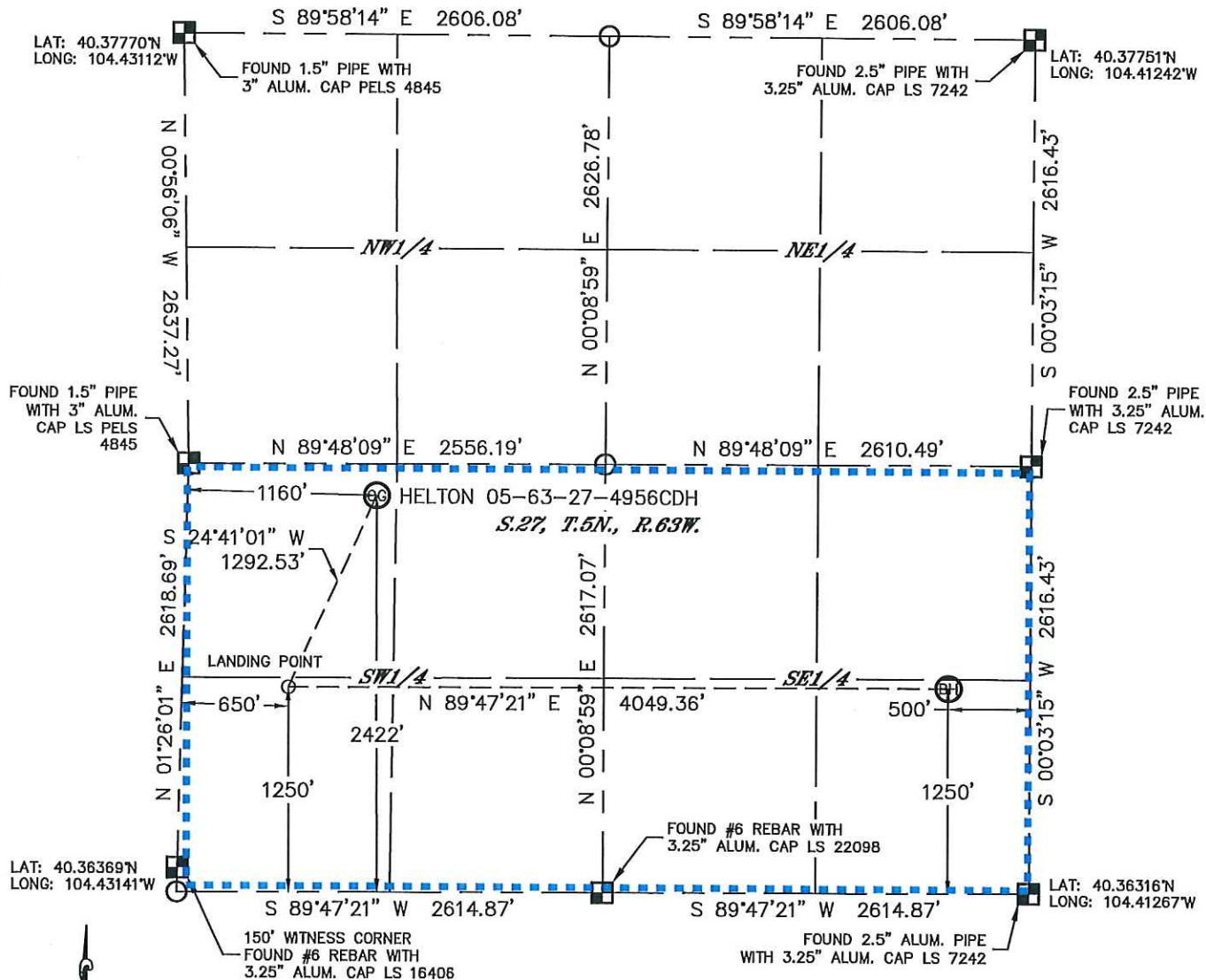


Lat40°, Inc. 1635 Foxtrail Drive, Suite 325 Loveland, CO 970-776-3321

# WELL LOCATION CERTIFICATE

THIS MAP DOES NOT REPRESENT A BOUNDARY SURVEY

SECTION: 27  
TOWNSHIP: 5N  
RANGE: 63W



In accordance with a request from Jeff Fandrich with BILL BARRETT CORPORATION, Lat40°, Inc. has determined the surface location of the HELTON 05-63-27-4659CDH to be 2422' from the SOUTH line and 1160' from the WEST line and the bottom hole to be 1250' from the SOUTH line and 500' from the EAST line as measured at right angles from the section lines of Section 27, Township 5 North, Range 63 West of the Sixth Principal Meridian, County of Weld, State of Colorado.

I hereby state that this Well Location Certificate was prepared by me, or under my direct supervision, that the fieldwork was completed on 5/3/2013, for and on behalf of BILL BARRETT CORPORATION. That this is not a Land Survey Plat or an Improvement Survey Plat, and that it is not to be relied upon for establishment of fence, building, or other future improvement lines.

## NOTE:

- 1) Bearings shown are Grid Bearings of the Colorado State Plane Coordinate System, North Zone, North American Datum 1983/2007. The lineal dimensions as contained herein are based upon the "U.S. Survey Foot."
- 2) Ground elevations are based on an observed GPS elevation (NAVD 1988 DATUM).
- 3) IMPROVEMENTS: See LOCATION DRAWING for all visible improvements within 400' of disturbed area.
- 4) SURFACE USE: RANGELAND
- 5) INSTRUMENT OPERATOR: BRIAN ROTTINGHAUS

## NOTE

According to Colorado law, you must commence any legal action based upon any defect in this W.L.C. within three years after you discover such defect. In no event, may any action based upon any defect in this survey be commenced more than ten years after the date of the certificate shown hereon. (13-80-105 C.R.S.)

## LEGEND

- = ALIQUOT MONUMENT AS DESCRIBED
- = CALCULATED POSITION

## SURFACE LOCATION

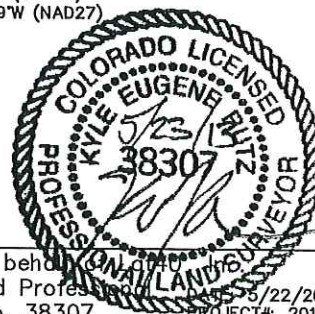
LAT: 40.36990°N (40°22'11.6"N)  
LONG: 104.42694°W (104°25'37.0"W)  
LAT: 40.36992°N (NAD27)  
LONG: 104.42643°W (NAD27)  
PDOP: 2.0  
ELEV: 4542'  
1/4, 1/4: NW1/4SW1/4  
NEAREST PROPERTY LINE: 342' EAST

## LANDING POINT

LAT: 40.36669°N (40°22'00.1"N)  
LONG: 104.42893°W (104°25'44.2"W)  
LAT: 40.36671°N (NAD27)  
LONG: 104.42842°W (NAD27)

## BOTTOM HOLE

LAT: 40.36660°N (40°21'59.8"N)  
LONG: 104.41440°W (104°24'51.9"W)  
LAT: 40.36662°N (NAD27)  
LONG: 104.41389°W (NAD27)



Kyle E. Rutz—On behalf of  
Colorado Licensed Professional Land Surveyor No. 38307  
PROJECT#: 2013048



June 3, 2013

**SENT VIA CERTIFIED MAIL**  
7012 2210 0001 8535 1327

**Bonanza Creek Energy Operating Company, LLC.**  
Attn: Jared Rush  
410 17<sup>th</sup> Street, Suite 1500  
Denver, CO 80202

RE: Notification of Horizontal Well Application to Drill  
Wells: Helton 5-63-27-4956CDH  
Reservoir: Codell  
Township 5 North, Range 63 West, 6<sup>th</sup> P.M.  
Section 27: S/2  
SHL: NW/4SW/4  
Weld County, Colorado

Dear Owner:

Bill Barrett Corporation (BBC) has filed an application with the State of Colorado Oil and Gas Conservation Commission requesting approval of a horizontal well for the referenced location as set forth in the attached application. BBC will land the bottom hole for the above referenced well 500' or greater from section line and conform to the 18° azimuth requirement.

BBC's proposed wellbore spacing unit consists of the S/2 of Section 27, T5N, R63W, creating a 320 acre wellbore spacing unit for the Codell formation. BBC intends to begin drilling operations before the end of the fourth quarter of 2013.

If the commission is in agreement and there are no objections within a 30-day period from the date of mailing, the Commission will administratively approve the application.

Should you have any questions, please call me directly at 303.312.8553.

Sincerely,  
Bill Barrett Corporation

Wes DiGrappa  
Land Administrator

Attachment

Pursuant to Rule 318A.c.(6) Order 1R-100 of the Colorado Oil and Gas Conservation Commission, the undersigned has received notice from Bill Barrett Corporation of its intention to drill and operate the Helton 5-63-27-4956CDH well in T5N-R63W, Section 27, 6<sup>th</sup> P.M., Weld County, Colorado and the undersigned hereby waives the thirty (30) day notice requirement as provided by said rule.

BY: Tony Buchanan

Printed Name: Tony Buchanan

Date: 6/20/13

Enclosure



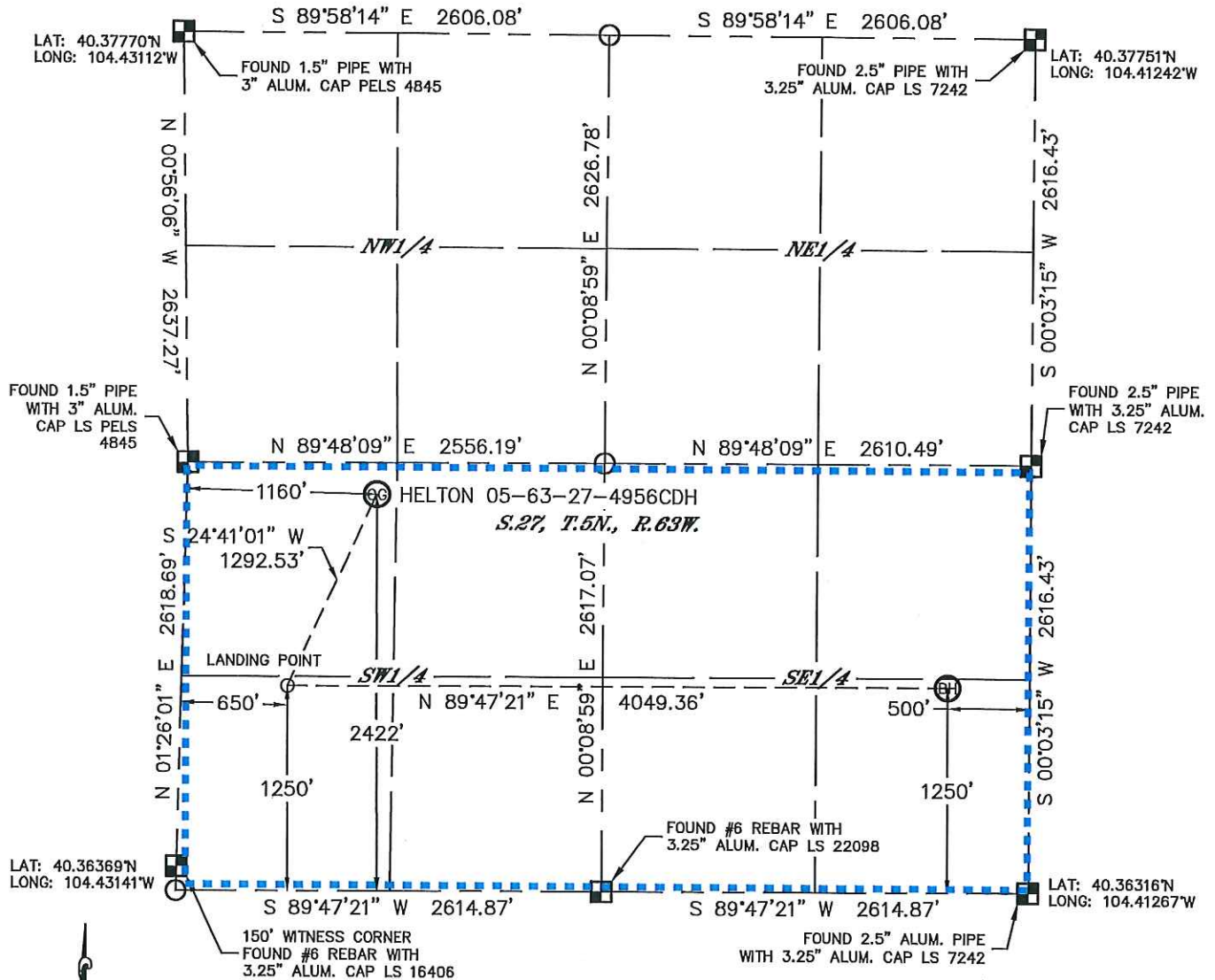


Lat40°, Inc. 1635 Foxtrail Drive, Suite 325 Loveland, CO 970-776-3321

# WELL LOCATION CERTIFICATE

THIS MAP DOES NOT REPRESENT A BOUNDARY SURVEY

SECTION: 27  
TOWNSHIP: 5N  
RANGE: 63W



In accordance with a request from Jeff Fandrich with BILL BARRETT CORPORATION, Lat40°, Inc. has determined the surface location of the HELTON 05-63-27-4956CDH to be 2422' from the SOUTH line and 1160' from the WEST line and the bottom hole to be 1250' from the SOUTH line and 500' from the EAST line as measured at right angles from the section lines of Section 27, Township 5 North, Range 63 West of the Sixth Principal Meridian, County of Weld, State of Colorado.

I hereby state that this Well Location Certificate was prepared by me, or under my direct supervision, that the fieldwork was completed on 5/3/2013, for and on behalf of BILL BARRETT CORPORATION. That this is not a Land Survey Plat or an Improvement Survey Plat, and that it is not to be relied upon for establishment of fence, building, or other future Improvement lines.

## NOTE:

- 1) Bearings shown are Grid Bearings of the Colorado State Plane Coordinate System, North Zone, North American Datum 1983/2007. The lineal dimensions as contained herein are based upon the "U.S. Survey Foot."
- 2) Ground elevations are based on an observed GPS elevation (NAVD 1988 DATUM).
- 3) IMPROVEMENTS: See LOCATION DRAWING for all visible improvements within 400' of disturbed area.
- 4) SURFACE USE: RANGELAND
- 5) INSTRUMENT OPERATOR: BRIAN ROTTINGHAUS

## NOTE

According to Colorado law, you must commence any legal action based upon any defect in this W.L.C. within three years after you discover such defect. In no event, may any action based upon any defect in this survey be commenced more than ten years after the date of the certificate shown hereon. (13-80-105 C.R.S.)

## LEGEND

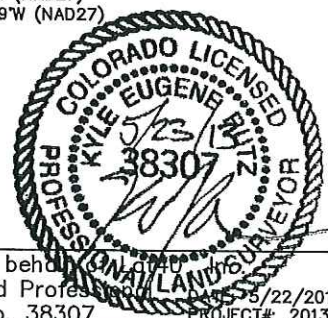
- = ALIQUOT MONUMENT AS DESCRIBED
- = CALCULATED POSITION

## SURFACE LOCATION

LAT: 40.36990°N (40°22'11.6"N)  
LONG: 104.42694°W (104°25'37.0"W)  
LAT: 40.36992°N (NAD27)  
LONG: 104.42643°W (NAD27)  
PDOP: 2.0  
ELEV: 4542'  
1/4, 1/4: NW1/4SW1/4  
NEAREST PROPERTY LINE: 342' EAST  
LANDING POINT  
LAT: 40.36669°N (40°22'00.1"N)  
LONG: 104.42893°W (104°25'44.2"W)  
LAT: 40.36671°N (NAD27)  
LONG: 104.42842°W (NAD27)

## BOTTOM HOLE

LAT: 40.36660°N (40°21'59.8"N)  
LONG: 104.41440°W (104°24'51.9"W)  
LAT: 40.36662°N (NAD27)  
LONG: 104.41389°W (NAD27)



Kyle E. Rutz-On behalf of  
Colorado Licensed Professional Land Surveyor No. 38307  
5/23/2013  
PROJECT#: 2013048





June 3, 2013

**SENT VIA CERTIFIED MAIL**  
7012 2210 0001 8535 1310

**Holmes Eastern Company LLC.**

Attn: Jared Rush  
410 17<sup>th</sup> Street, Suite 1500  
Denver, CO 80202

RE: Notification of Horizontal Well Application to Drill  
Wells: Helton 5-63-27-33340CDH  
Reservoir: Codell  
Township 5 North, Range 63 West, 6<sup>th</sup> P.M.  
Section 27: S/2N/2, N/2S/2  
SHL: NW/4SW/4  
Weld County, Colorado

Dear Owner:

Bill Barrett Corporation (BBC) has filed an application with the State of Colorado Oil and Gas Conservation Commission requesting approval of a horizontal well for the referenced location as set forth in the attached application. BBC will land the bottom hole for the above referenced well 500' or greater from section line and conform to the 18° azimuth requirement.

BBC's proposed wellbore spacing unit consists of the S/2N/2, N/2S/2 of Section 27, T5N, R63W, creating a 320 acre wellbore spacing unit for the Codell formation. BBC intends to begin drilling operations before the end of the fourth quarter of 2013.

If the commission is in agreement and there are no objections within a 30-day period from the date of mailing, the Commission will administratively approve the application.

Should you have any questions, please call me directly at 303.312.8553.

Sincerely,  
Bill Barrett Corporation

Wes DiGrappa  
Land Administrator

Attachment

Pursuant to Rule 318A.e.(6) Order 1R-100 of the Colorado Oil and Gas Conservation Commission, the undersigned has received notice from Bill Barrett Corporation of its intention to drill and operate the Helton 5-63-27-3340CDH well in T5N-R63W, Section 27, 6<sup>th</sup> P.M., Weld County, Colorado and the undersigned hereby waives the thirty (30) day notice requirement as provided by said rule.

BY: Tony Buchanan

Printed Name: Tony BUCHANAN - VP

Date: 6/20/13  
Enclosure

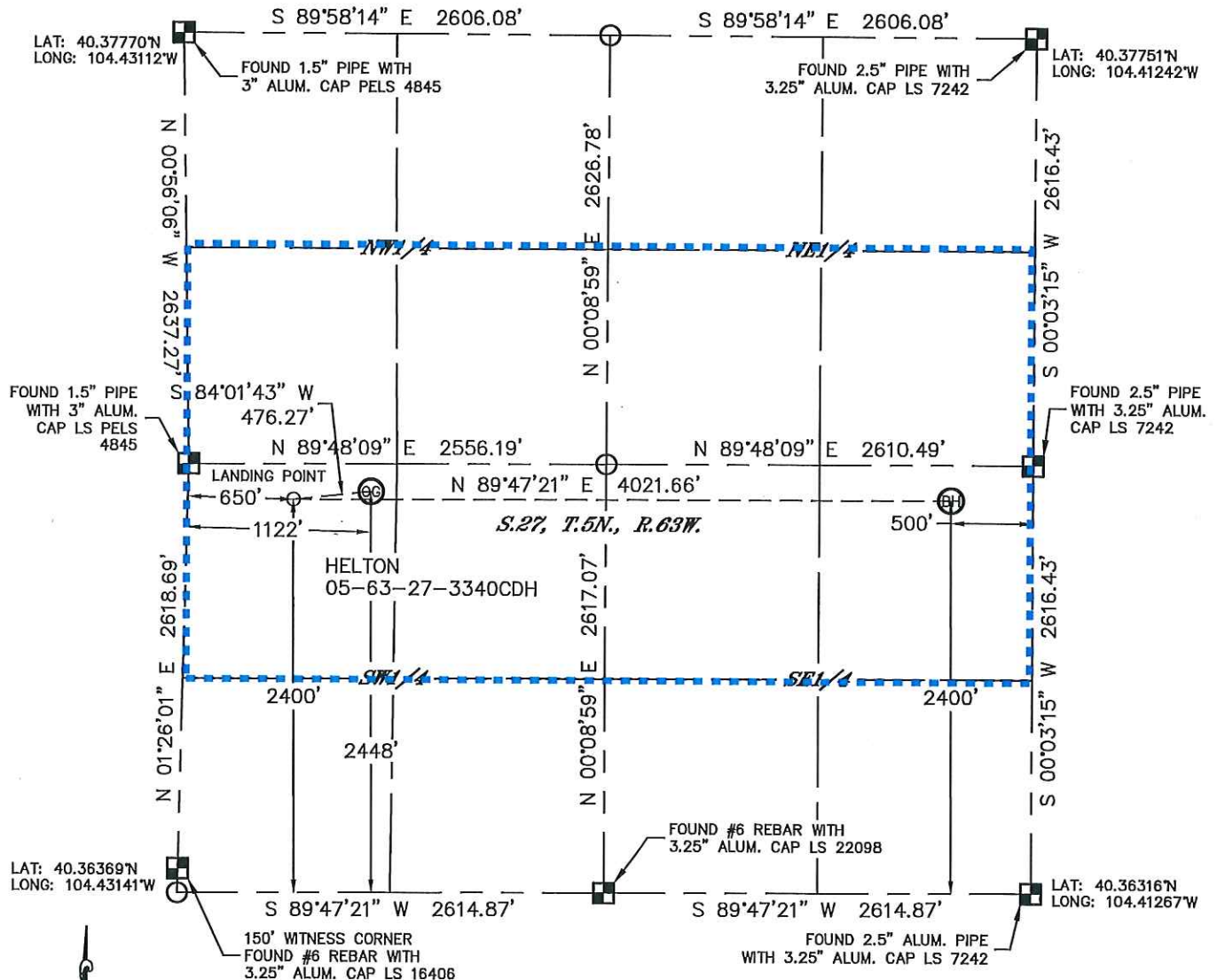


Lat40°, Inc. 1635 Foxtrail Drive, Suite 325 Loveland, CO 970-776-3321

# WELL LOCATION CERTIFICATE

THIS MAP DOES NOT REPRESENT A BOUNDARY SURVEY

SECTION: 27  
TOWNSHIP: 5N  
RANGE: 63W



In accordance with a request from Jeff Fandrich with BILL BARRETT CORPORATION.

Lat40°, Inc. has determined the surface location of the HELTON 05-63-27-3340CDH to be 2448' from the SOUTH line and 1122' from the WEST line and the bottom hole to be 2400' from the SOUTH line and 500' from the EAST line as measured at right angles from the section lines of Section 27, Township 5 North, Range 63 West of the Sixth Principal Meridian, County of Weld, State of Colorado.

I hereby state that this Well Location Certificate was prepared by me, or under my direct supervision, that the fieldwork was completed on 5/3/2013, for and on behalf of BILL BARRETT CORPORATION. That this is not a Land Survey Plat or an Improvement Survey Plat, and that it is not to be relied upon for establishment of fence, building, or other future improvement lines.

## NOTE:

- 1) Bearings shown are Grid Bearings of the Colorado State Plane Coordinate System, North Zone, North American Datum 1983/2007. The lined dimensions as contained herein are based upon the "U.S. Survey Foot."
- 2) Ground elevations are based on an observed GPS elevation (NAVD 1988 DATUM).
- 3) IMPROVEMENTS: See LOCATION DRAWING for all visible improvements within 400' of disturbed area.
- 4) SURFACE USE: RANGELAND
- 5) INSTRUMENT OPERATOR: BRIAN ROTTINGHAUS

## NOTE

According to Colorado law, you must commence any legal action based upon any defect in this W.L.C. within three years after you discover such defect. In no event, may any action based upon any defect in this survey be commenced more than ten years after the date of the certificate shown hereon. (13-80-105 C.R.S.)

## SURFACE LOCATION

LAT: 40.36997°N (40°22'11.9"N)  
LONG: 104.42708°W (104°25'37.5"W)  
LAT: 40.36999°N (NAD27)  
LONG: 104.42657°W (NAD27)  
PDOP: 2.1  
ELEV: 4542'  
1/4, 1/4: NW1/4SW1/4  
NEAREST PROPERTY LINE: 379' EAST

## LANDING POINT

LAT: 40.36985°N (40°22'11.5"N)  
LONG: 104.42878°W (104°25'43.6"W)  
LAT: 40.36987°N (NAD27)  
LONG: 104.42827°W (NAD27)

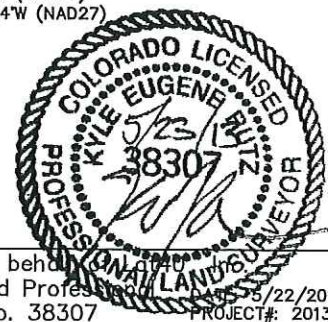
## BOTTOM HOLE

LAT: 40.36975°N (40°22'11.1"N)  
LONG: 104.41435°W (104°24'51.7"W)  
LAT: 40.36977°N (NAD27)  
LONG: 104.41384°W (NAD27)

## LEGEND

- = ALIQUOT MONUMENT AS DESCRIBED
- = CALCULATED POSITION

Kyle E. Rutz—On behalf of  
Colorado Licensed Professional Land Surveyor No. 38307  
PROJECT#: 2013048





June 3, 2013

**SENT VIA CERTIFIED MAIL**  
7012 2210 0001 8535 1327

**Bonanza Creek Energy Operating Company, LLC.**  
Attn: Jared Rush  
410 17<sup>th</sup> Street, Suite 1500  
Denver, CO 80202

RE: Notification of Horizontal Well Application to Drill  
Wells: Helton 5-63-27-33340CDH  
Reservoir: Codell  
Township 5 North, Range 63 West, 6<sup>th</sup> P.M.  
Section 27: S/2N/2, N/2S/2  
SHL: NW/4SW/4  
Weld County, Colorado

Dear Owner:

Bill Barrett Corporation (BBC) has filed an application with the State of Colorado Oil and Gas Conservation Commission requesting approval of a horizontal well for the referenced location as set forth in the attached application. BBC will land the bottom hole for the above referenced well 500' or greater from section line and conform to the 18° azimuth requirement.

BBC's proposed wellbore spacing unit consists of the S/2N/2, N/2S/2 of Section 27, T5N, R63W, creating a 320 acre wellbore spacing unit for the Codell formation. BBC intends to begin drilling operations before the end of the fourth quarter of 2013.

If the commission is in agreement and there are no objections within a 30-day period from the date of mailing, the Commission will administratively approve the application.

Should you have any questions, please call me directly at 303.312.8553.

Sincerely,  
Bill Barrett Corporation

Wes DiGrappa  
Land Administrator

Attachment



Pursuant to Rule 318A.e.(6) Order 1R-100 of the Colorado Oil and Gas Conservation Commission, the undersigned has received notice from Bill Barrett Corporation of its intention to drill and operate the Helton 5-63-27-3340CDH well in T5N-R63W, Section 27, 6<sup>th</sup> P.M., Weld County, Colorado and the undersigned hereby waives the thirty (30) day notice requirement as provided by said rule.

BY: Tony Buck

Printed Name: Tony Buckman - VP

Date: 6/20/13  
Enclosure

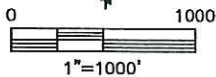
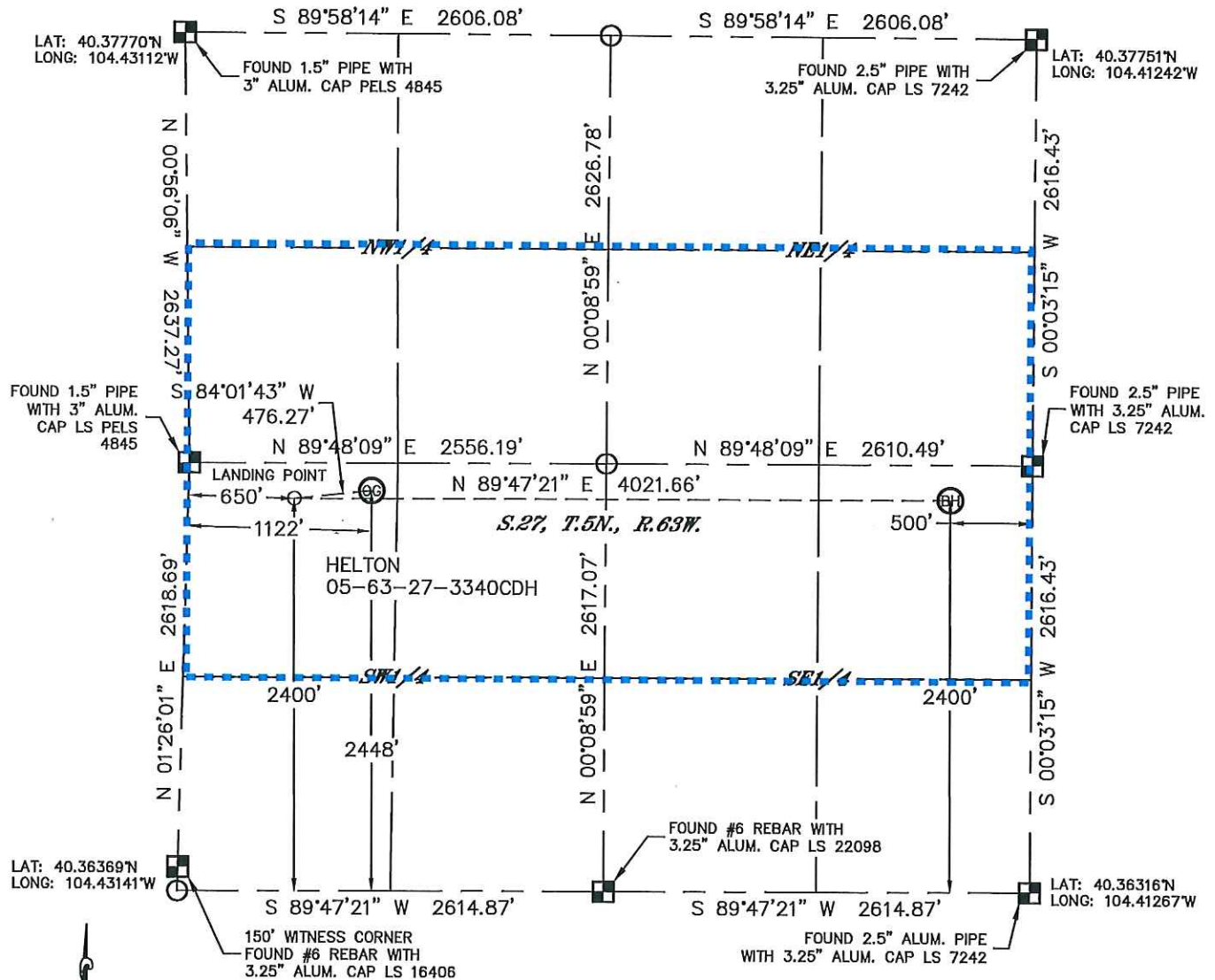


Lat40°, Inc. 1635 Foxtrail Drive, Suite 325 Loveland, CO 970-776-3321

# WELL LOCATION CERTIFICATE

THIS MAP DOES NOT REPRESENT A BOUNDARY SURVEY

SECTION: 27  
TOWNSHIP: 5N  
RANGE: 63W



In accordance with a request from Jeff Fandrich with BILL BARRETT CORPORATION, Lat40°, Inc. has determined the surface location of the HELTON 05-63-27-3340CDH to be 2448' from the SOUTH line and 1122' from the WEST line and the bottom hole to be 2400' from the SOUTH line and 500' from the EAST line as measured at right angles from the section lines of Section 27, Township 5 North, Range 63 West of the Sixth Principal Meridian, County of Weld, State of Colorado.

I hereby state that this Well Location Certificate was prepared by me, or under my direct supervision, that the fieldwork was completed on 5/3/2013, for and on behalf of BILL BARRETT CORPORATION. That this is not a Land Survey Plat or an Improvement Survey Plat, and that it is not to be relied upon for establishment of fence, building, or other future improvement lines.

## NOTE:

- 1) Bearings shown are Grid Bearings of the Colorado State Plane Coordinate System, North Zone, North American Datum 1983/2007. The lineal dimensions as contained herein are based upon the "U.S. Survey Foot."
- 2) Ground elevations are based on an observed GPS elevation (NAVD 1988 DATUM).
- 3) IMPROVEMENTS: See LOCATION DRAWING for all visible improvements within 400' of disturbed area.
- 4) SURFACE USE: RANGELAND
- 5) INSTRUMENT OPERATOR: BRIAN ROTTINGHAUS

## NOTE

According to Colorado law, you must commence any legal action based upon any defect in this W.L.C. within three years after you discover such defect. In no event, may any action based upon any defect in this survey be commenced more than ten years after the date of the certificate shown hereon. (13-80-105 C.R.S.)

## LEGEND

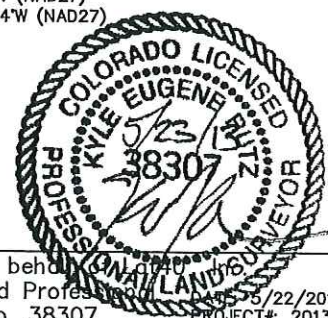
- = ALIQUOT MONUMENT AS DESCRIBED
- = CALCULATED POSITION

## SURFACE LOCATION

LAT: 40.36997°N (40°22'11.9"N)  
LONG: 104.42708°W (104°25'37.5"W)  
LAT: 40.36999°N (NAD27)  
LONG: 104.42657°W (NAD27)  
PDOP: 2.1  
ELEV: 4542'  
1/4, 1/4: NW1/4SW1/4  
NEAREST PROPERTY LINE: 379' EAST  
LANDING POINT  
LAT: 40.36985°N (40°22'11.5"N)  
LONG: 104.42878°W (104°25'43.6"W)  
LAT: 40.36987°N (NAD27)  
LONG: 104.42827°W (NAD27)

## BOTTOM HOLE

LAT: 40.36975°N (40°22'11.1"N)  
LONG: 104.41435°W (104°24'51.7"W)  
LAT: 40.36977°N (NAD27)  
LONG: 104.41384°W (NAD27)



Kyle E. Rutz—On behalf of  
Colorado Licensed Professional Land Surveyor No. 38307  
PROJECT#: 2013048



June 3, 2013

**SENT VIA CERTIFIED MAIL**  
7012 2210 0001 8535 1310

**Holmes Eastern Company LLC.**

Attn: Jared Rush  
410 17<sup>th</sup> Street, Suite 1500  
Denver, CO 80202

RE: Notification of Horizontal Well Application to Drill  
Wells: Helton 5-63-27-3225CH  
Reservoir: Niobrara  
Township 5 North, Range 63 West, 6<sup>th</sup> P.M.  
Section 27: S/2N/2, N/2S/2  
SHL: NW/4SW/4  
Weld County, Colorado

Dear Owner:

Bill Barrett Corporation (BBC) has filed an application with the State of Colorado Oil and Gas Conservation Commission requesting approval of a horizontal well for the referenced location as set forth in the attached application. BBC will land the bottom hole for the above referenced well 500' or greater from section line and conform to the 18° azimuth requirement.

BBC's proposed wellbore spacing unit consists of the S/2N/2, N/2S/2 of Section 27, T5N, R63W, creating a 320 acre wellbore spacing unit for the Niobrara formation. BBC intends to begin drilling operations before the end of the fourth quarter of 2013.

If the commission is in agreement and there are no objections within a 30-day period from the date of mailing, the Commission will administratively approve the application.

Should you have any questions, please call me directly at 303.312.8553.

Sincerely,  
Bill Barrett Corporation

Wes DiGrappa  
Land Administrator

Attachment

Pursuant to Rule 318A.e.(6) Order 1R-100 of the Colorado Oil and Gas Conservation Commission, the undersigned has received notice from Bill Barrett Corporation of its intention to drill and operate the Helton 5-63-27-3225CH well in T5N-R63W, Section 27, 6<sup>th</sup> P.M., Weld County, Colorado and the undersigned hereby waives the thirty (30) day notice requirement as provided by said rule.

BY: Tony Buchanan

Printed Name: Tony BUCHANAN - VP

Date: 6/20/19  
Enclosure



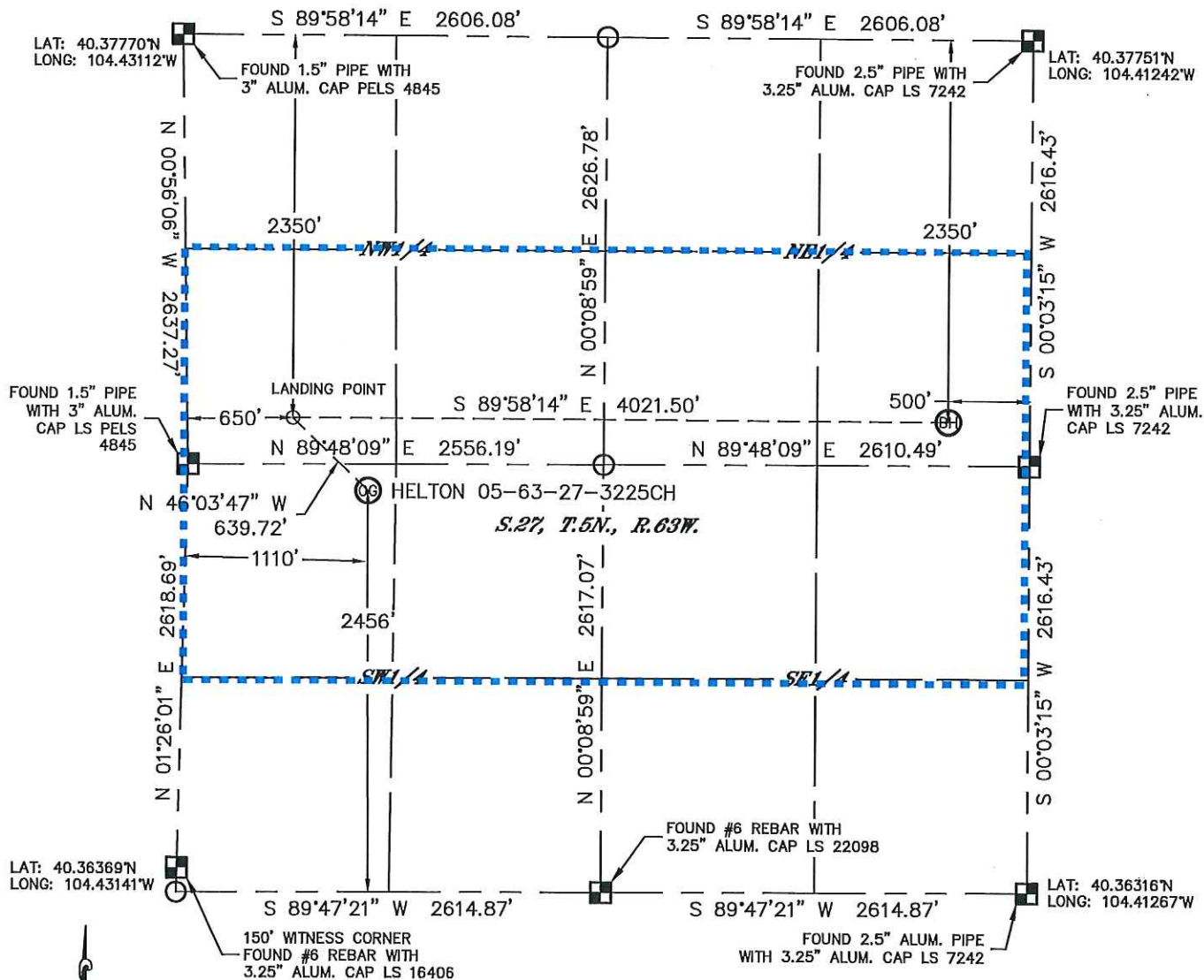


Lat40°, Inc. 1635 Foxtrail Drive, Suite 325 Loveland, CO 970-776-3321

# WELL LOCATION CERTIFICATE

THIS MAP DOES NOT REPRESENT A BOUNDARY SURVEY

SECTION: 27  
TOWNSHIP: 5N  
RANGE: 63W



In accordance with a request from Jeff Fandrich with BILL BARRETT CORPORATION Lat40°, Inc. has determined the surface location of the HELTON 05-63-27-3225CH to be 2456' from the SOUTH line and 1110' from the WEST line and the bottom hole to be 2350' from the NORTH line and 500' from the EAST line as measured at right angles from the section lines of Section 27, Township 5 North, Range 63 West of the Sixth Principal Meridian, County of Weld, State of Colorado.

I hereby state that this Well Location Certificate was prepared by me, or under my direct supervision, that the fieldwork was completed on 5/3/2013, for and on behalf of BILL BARRETT CORPORATION. That this is not a Land Survey Plat or an Improvement Survey Plat, and that it is not to be relied upon for establishment of fence, building, or other future improvement lines.

## NOTE:

- 1) Bearings shown are Grid Bearings of the Colorado State Plane Coordinate System, North Zone, North American Datum 1983/2007. The lined dimensions as contained herein are based upon the "U.S. Survey Foot."
- 2) Ground elevations are based on an observed GPS elevation (NAVD 1988 DATUM).
- 3) IMPROVEMENTS: See LOCATION DRAWING for all visible improvements within 400' of disturbed area.
- 4) SURFACE USE: RANGELAND
- 5) INSTRUMENT OPERATOR: BRIAN ROTTINGHAUS

## NOTE

According to Colorado law, you must commence any legal action based upon any defect in this W.L.C. within three years after you discover such defect. In no event, may any action based upon any defect in this survey be commenced more than ten years after the date of the certificate shown hereon. (13-80-105 C.R.S.)

## LEGEND

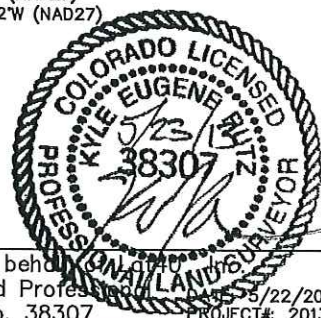
- = ALIQUOT MONUMENT AS DESCRIBED
- = CALCULATED POSITION

## SURFACE LOCATION

LAT: 40.36999°N (40°22'12.0"N)  
LONG: 104.42712°W (104°25'37.6"W)  
LAT: 40.37001°N (NAD27)  
LONG: 104.42661°W (NAD27)  
PDOP: 2.1  
ELEV: 4543'  
1/4, 1/4: NW1/4SW1/4  
NEAREST PROPERTY LINE: 391' EAST  
LANDING POINT  
LAT: 40.37122°N (40°22'16.4"N)  
LONG: 104.42875°W (104°25'43.5"W)  
LAT: 40.37124°N (NAD27)  
LONG: 104.42824°W (NAD27)

## BOTTOM HOLE

LAT: 40.37108°N (40°22'15.9"N)  
LONG: 104.41433°W (104°24'51.6"W)  
LAT: 40.37110°N (NAD27)  
LONG: 104.41382°W (NAD27)



Kyle E. Rutz—On behalf of  
Colorado Licensed Professional Land Surveyor No. 38307  
PROJECT#: 2013048



June 3, 2013

**SENT VIA CERTIFIED MAIL**

7012 2210 0001 8535 1327

**Bonanza Creek Energy Operating Company, LLC.**

Attn: Jared Rush  
410 17<sup>th</sup> Street, Suite 1500  
Denver, CO 80202

RE: Notification of Horizontal Well Application to Drill  
Wells: Helton 5-63-27-3225CH  
Reservoir: Niobrara  
Township 5 North, Range 63 West, 6<sup>th</sup> P.M.  
Section 27: S/2N/2, N/2S/2  
SHL: NW/4SW/4  
Weld County, Colorado

Dear Owner:

Bill Barrett Corporation (BBC) has filed an application with the State of Colorado Oil and Gas Conservation Commission requesting approval of a horizontal well for the referenced location as set forth in the attached application. BBC will land the bottom hole for the above referenced well 500' or greater from section line and conform to the 18° azimuth requirement.

BBC's proposed wellbore spacing unit consists of the S/2N/2, N/2S/2 of Section 27, T5N, R63W, creating a 320 acre wellbore spacing unit for the Niobrara formation. BBC intends to begin drilling operations before the end of the fourth quarter of 2013.

If the commission is in agreement and there are no objections within a 30-day period from the date of mailing, the Commission will administratively approve the application.

Should you have any questions, please call me directly at 303.312.8553.

Sincerely,  
Bill Barrett Corporation

Wes DiGrappa  
Land Administrator

Attachment

Pursuant to Rule 318A.e.(6) Order 1R-100 of the Colorado Oil and Gas Conservation Commission, the undersigned has received notice from Bill Barrett Corporation of its intention to drill and operate the Helton 5-63-27-3225CH well in T5N-R63W, Section 27, 6<sup>th</sup> P.M., Weld County, Colorado and the undersigned hereby waives the thirty (30) day notice requirement as provided by said rule.

BY: Tony Buchanan

Printed Name: Tony Buchanan - VP

Date: 6/20/13

Enclosure

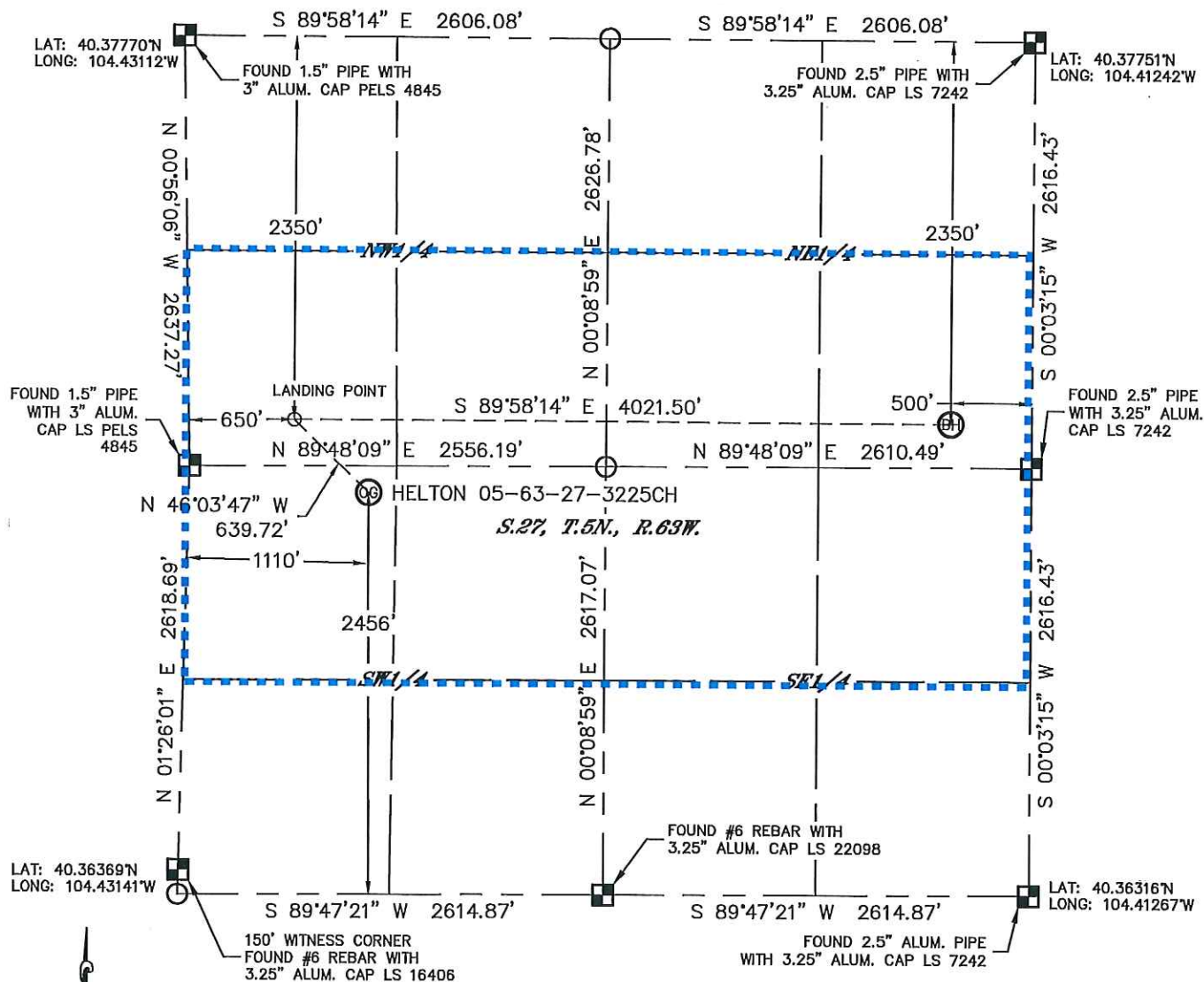


Lat40°, Inc. 1635 Foxtrail Drive, Suite 325 Loveland, CO 970-776-3321

# WELL LOCATION CERTIFICATE

THIS MAP DOES NOT REPRESENT A BOUNDARY SURVEY

SECTION: 27  
TOWNSHIP: 5N  
RANGE: 63W



In accordance with a request from Jeff Fandrich with BILL BARRETT CORPORATION

Lat40', Inc. has determined the surface location of the HELTON 05-63-27-3225CH to be 2456' from the SOUTH line and 1110' from the WEST line and the bottom hole to be 2350' from the NORTH line and 500' from the EAST line as measured at right angles from the section lines of Section 27, Township 5 North, Range 63 West of the Sixth Principal Meridian, County of Weld, State of Colorado.

I hereby state that this Well Location Certificate was prepared by me, or under my direct supervision, that the fieldwork was completed on 5/3/2013, for and on behalf of BILL BARRETT CORPORATION. That this is not a Land Survey Plat or an Improvement Survey Plat, and that it is not to be relied upon for establishment of fence, building, or other future Improvement lines.

**NOTE:**

- 1) Bearings shown are Grid Bearings of the Colorado State Plane Coordinate System, North Zone, North American Datum 1983/2007. The lineal dimensions as contained herein are based upon the "U.S. Survey Foot."
- 2) Ground elevations are based on an observed GPS elevation (NAVD 1988 DATUM).
- 3) IMPROVEMENTS: See LOCATION DRAWING for all visible improvements within 400' of disturbed area.
- 4) SURFACE USE: RANGELAND
- 5) INSTRUMENT OPERATOR: BRIAN ROTTINGHAUS

**NOTE**

According to Colorado law, you must commence any legal action based upon any defect in this W.L.C. within three years after you discover such defect. In no event, may any action based upon any defect in this survey be commenced more than ten years after the date of the certificate shown hereon. (13-80-105 C.R.S.)

### SURFACE LOCATION

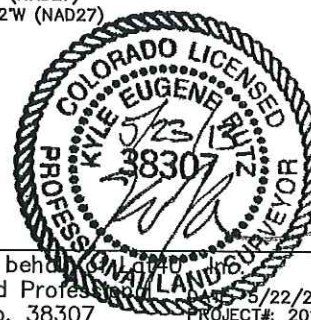
LAT: 40.36999N (40°22'12.0"N)  
LONG: 104.42712W (104°25'37.6"W)  
LAT: 40.37001N (NAD27)  
LONG: 104.42661W (NAD27)  
PDOP: 2.1  
ELEV: 4543'  
1/4,1/4: NW1/4SW1/4  
NEAREST PROPERTY LINE: 391' EAST

## LANDING POINT

LAT: 40.37122°N (40°22'16.4"N)  
LONG: 104.42875°W (104°25'43.5"W)  
LAT: 40.37124°N (NAD27)  
LONG: 104.42824°W (NAD27)

BOTTOM HOLE

LAT: 40.37108N (40°22'15.9"N)  
LONG: 104.41433W (104°24'51.6"W)  
LAT: 40.37110N (NAD27)  
LONG: 104.41382W (NAD27)



Kyle E. Rutz—On behalf of  
Colorado Licensed Professional  
Land Surveyor No. 38307

DATE: 5/22/2013  
PROJECT#: 2013048