

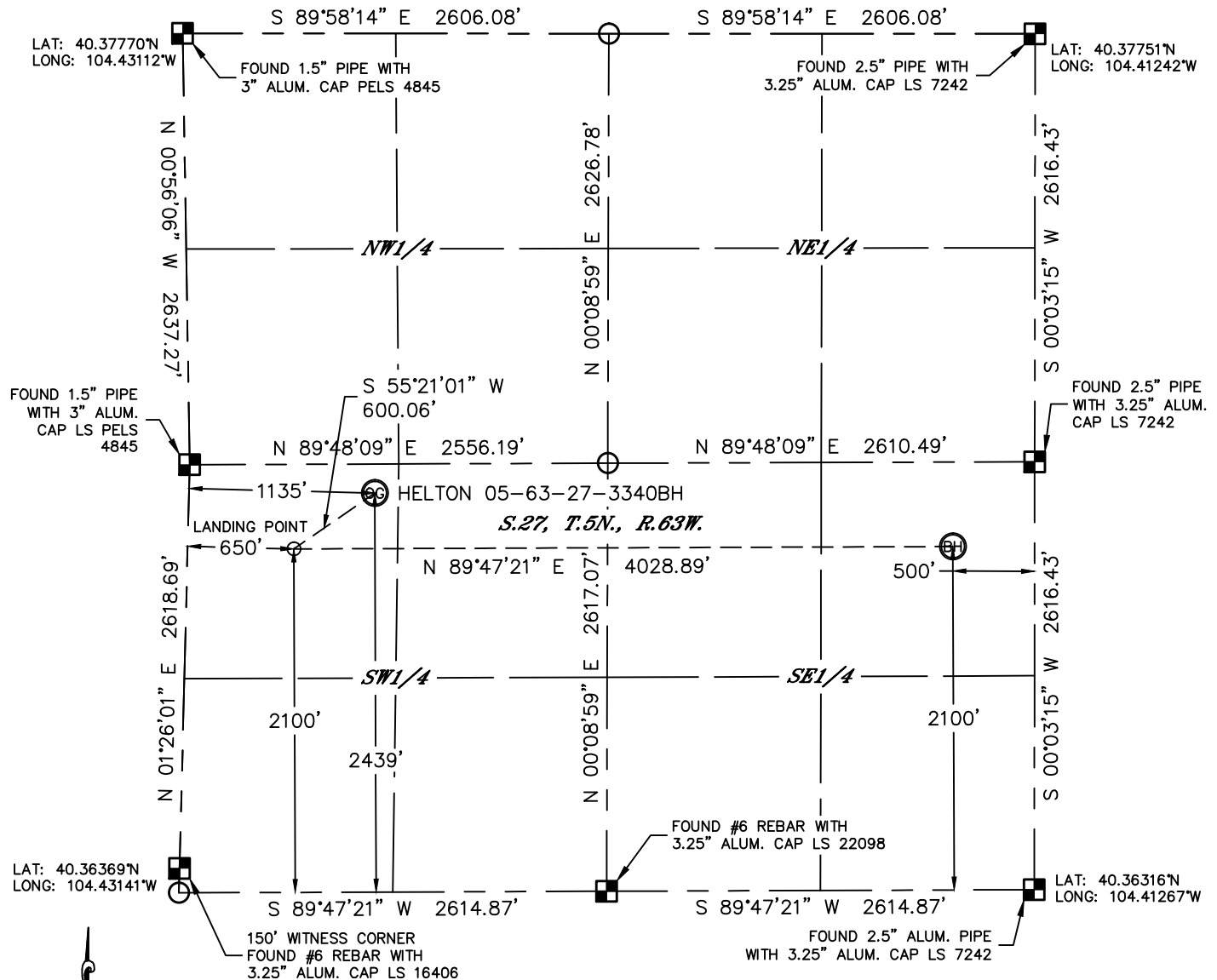


Lat40°, Inc. 1635 Foxtrail Drive, Suite 325 Loveland, CO 970-776-3321

# WELL LOCATION CERTIFICATE

THIS MAP DOES NOT REPRESENT A BOUNDARY SURVEY

SECTION: 27  
TOWNSHIP: 5N  
RANGE: 63W



In accordance with a request from Jeff Fandrich with BILL BARRETT CORPORATION Lat40°, Inc. has determined the surface location of the HELTON 05-63-27-3340BH to be 2439' from the SOUTH line and 1135' from the WEST line and the bottom hole to be 2100' from the SOUTH line and 500' from the EAST line as measured at right angles from the section lines of Section 27, Township 5 North, Range 63 West of the Sixth Principal Meridian, County of Weld, State of Colorado.

I hereby state that this Well Location Certificate was prepared by me, or under my direct supervision, that the fieldwork was completed on 5/3/2013, for and on behalf of BILL BARRETT CORPORATION That this is not a Land Survey Plat or an Improvement Survey Plat, and that it is not to be relied upon for establishment of fence, building, or other future improvement lines.

## NOTE:

- 1) Bearings shown are Grid Bearings of the Colorado State Plane Coordinate System, North Zone, North American Datum 1983/2007. The lineal dimensions as contained herein are based upon the "U.S. Survey Foot."
- 2) Ground elevations are based on an observed GPS elevation (NAVD 1988 DATUM).
- 3) IMPROVEMENTS: See LOCATION DRAWING for all visible improvements within 400' of disturbed area.
- 4) SURFACE USE: RANGELAND
- 5) INSTRUMENT OPERATOR: BRIAN ROTTINGHAUS

## SURFACE LOCATION

LAT: 40.36994°N (40°22'11.8"N)  
LONG: 104.42703°W (104°25'37.3"W)  
LAT: 40.36996°N (NAD27)  
LONG: 104.42652°W (NAD27)  
PDOP: 2.0  
ELEV: 4542'  
1/4,1/4: NW1/4SW1/4  
NEAREST PROPERTY LINE: 367' EAST

## LANDING POINT

LAT: 40.36902°N (40°22'08.5"N)  
LONG: 104.42882°W (104°25'43.7"W)  
LAT: 40.36904°N (NAD27)  
LONG: 104.42831°W (NAD27)

## BOTTOM HOLE

LAT: 40.36893°N (40°22'08.1"N)  
LONG: 104.41436°W (104°24'51.7"W)  
LAT: 40.36895°N (NAD27)  
LONG: 104.41385°W (NAD27)

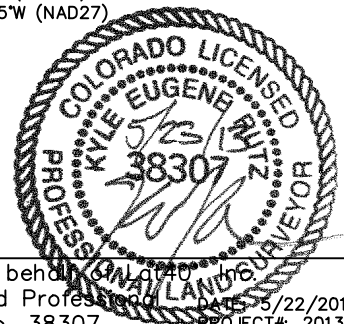
## NOTE

According to Colorado law, you must commence any legal action based upon any defect in this W.L.C. within three years after you discover such defect. In no event, may any action based upon any defect in this survey be commenced more than ten years after the date of the certificate shown hereon. (13-80-105 C.R.S.)

## LEGEND

- = ALIQUOT MONUMENT AS DESCRIBED
- = CALCULATED POSITION

Kyle E. Rutz—On behalf of Lat40°  
Colorado Licensed Professional Land Surveyor No. 38307  
DATE: 5/22/2013  
PROJECT#: 2013048



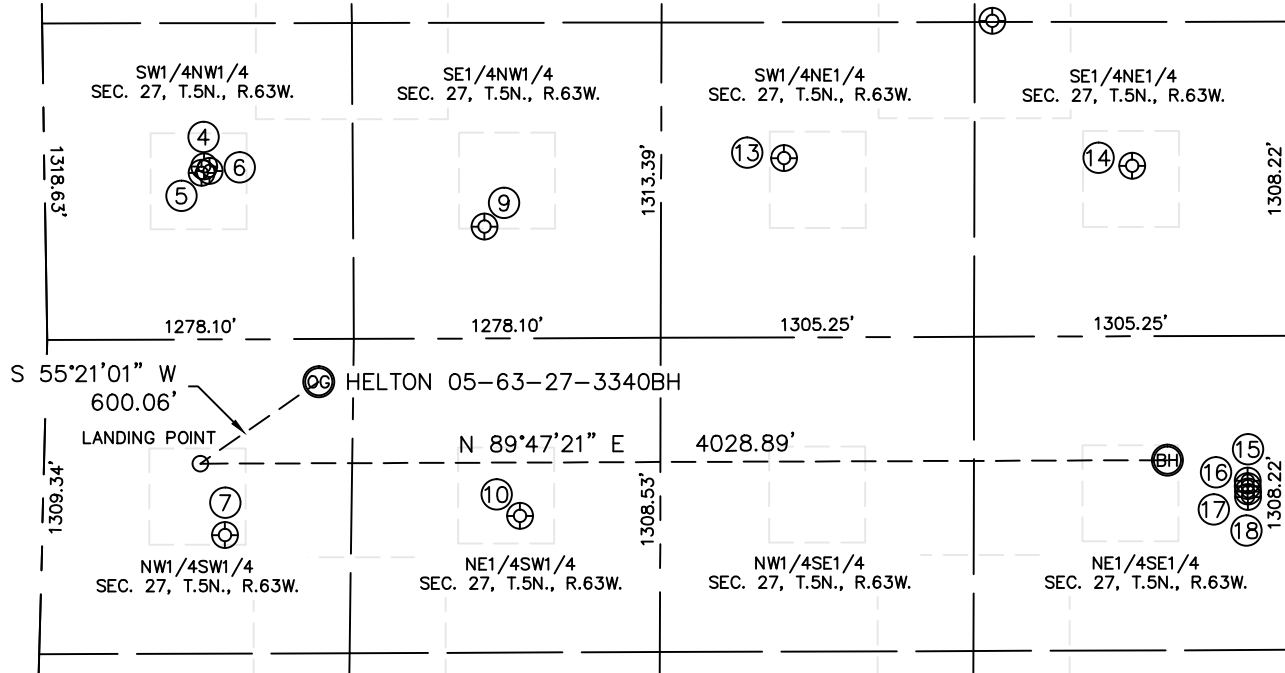


Lat40°, Inc. 1635 Foxtrail Drive, Suite 325 Loveland, CO 970-776-3321

# SITE SKETCH

HELTON 05-63-27-3340BH

SECTION: 27  
TOWNSHIP: 5N  
RANGE: 63W



④  
NORTH PLATTE C-27  
SW1/4NW1/4  
1913' FNL  
665' FWL  
LAT-40.37242°N  
LONG-104.42871°W  
PDOP: 1.8  
ELEV: 4544'

⑤  
PERKINS 12-27  
SW1/4NW1/4  
1941' FNL  
654' FWL  
LAT-40.37235°N  
LONG-104.42875°W  
PDOP: 5.0  
ELEV: 4545'

⑥  
NORTH PLATTE H-27  
SW1/4NW1/4  
1933' FNL  
688' FWL  
LAT-40.37237°N  
LONG-104.42863°W  
PDOP: 1.8  
ELEV: 4544'

⑦  
70 RANCH 13-27  
NW1/4SW1/4  
1803' FSL  
761' FWL  
LAT-40.36821°N  
LONG-104.42846°W  
PDOP: 2.2  
ELEV: 4538'

⑨  
70 RANCH 22-27  
SE1/4NW1/4  
2164' FNL  
1829' FWL  
LAT-40.37169°N  
LONG-104.42453°W  
PDOP: 1.6  
ELEV: 4565'

⑩  
70 RANCH 23-27  
NE1/4SW1/4  
1877' FSL  
1987' FWL  
LAT-40.36838°N  
LONG-104.42405°W  
PDOP: 2.1  
ELEV: 4544'

⑬  
70 RANCH 32-27  
SW1/4NE1/4  
1878' FNL  
2098' FEL  
LAT-40.37243°N  
LONG-104.42004°W  
PDOP: 4.5  
ELEV: 4585'

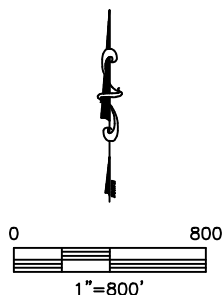
⑭  
70 RANCH USX BB27-8  
SE1/4NE1/4  
1909' FNL  
648' FEL  
LAT-40.37230°N  
LONG-104.41484°W  
PDOP: 2.0  
ELEV: 4574'

⑮  
70 RANCH 5-63-27-32H  
NE1/4SE1/4  
2013' FSL  
166' FEL  
LAT-40.36868°N  
LONG-104.41317°W  
PDOP: 2.2  
ELEV: 4587'

⑯  
70 RANCH 5-63-27-33H  
NE1/4SE1/4  
1990' FSL  
165' FEL  
LAT-40.36862°N  
LONG-104.41317°W  
PDOP: 2.2  
ELEV: 4587'

⑰  
70 RANCH 5-63-27-48H  
NE1/4SE1/4  
1968' FSL  
164' FEL  
LAT-40.36856°N  
LONG-104.41316°W  
PDOP: 2.2  
ELEV: 4587'

⑱  
70 RANCH 5-63-27-49H  
NE1/4SE1/4  
1944' FSL  
163' FEL  
LAT-40.36849°N  
LONG-104.41316°W  
PDOP: 1.5  
ELEV: 4587'



DATE: 5/21/2013  
PROJECT#: 2013048