

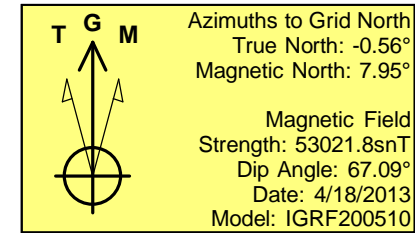
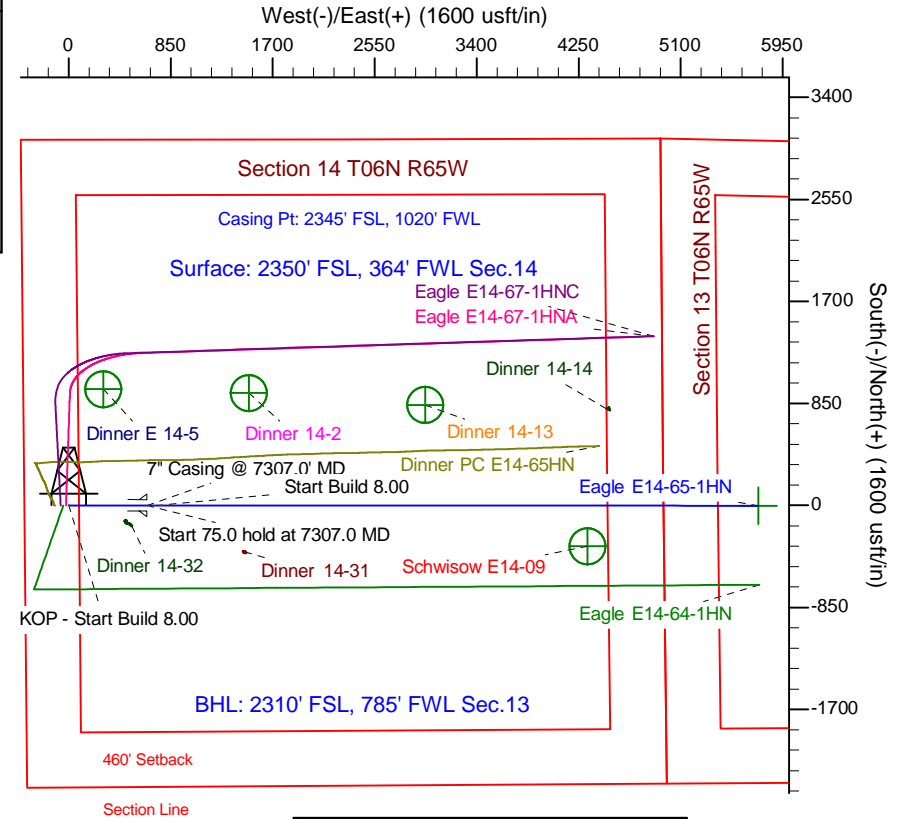
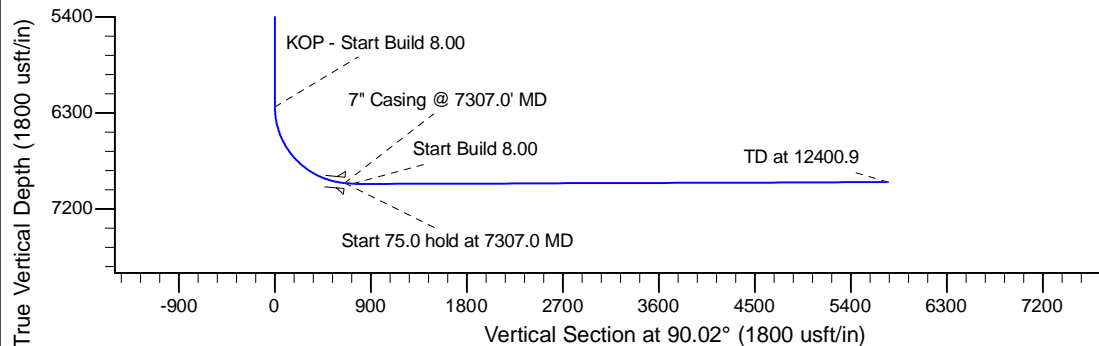
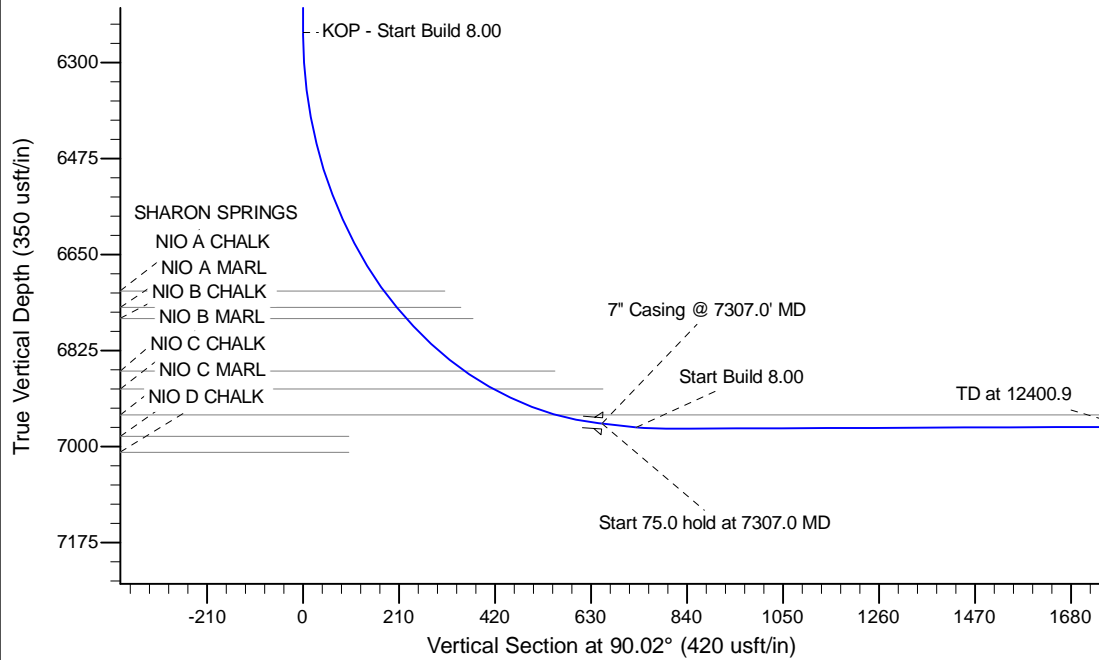
Project: Wattenberg Field  
Site: E (Sec.14-T06N-R65W) Weld County, CO  
Well: Eagle E14-65-1HN  
Wellbore: Original Drilling  
Design: APD - Rev 0

# Northern Region Drilling

Geodetic System: US State Plane 1983  
Datum: North American Datum 1983  
Ellipsoid: GRS 1980  
Zone: Colorado Northern Zone  
System Datum: Mean Sea Level

## SECTION DETAILS

Sec	MD	Inc	Azi	TVD	+N/-S	+E/-W	Dleg	TFace	VFace	Target
1	0.0	0.00	0.00	0.0	0.0	0.0	0.00	0.00	0.0	
2	6244.5	0.00	0.00	6244.5	0.0	0.0	0.00	0.00	0.0	
3	7307.0	85.00	90.02	6957.9	-0.2	653.8	8.00	90.02	653.8	
4	7382.0	85.00	90.02	6964.5	-0.2	728.5	0.00	0.00	728.5	
5	7447.0	90.20	90.02	6967.2	-0.2	793.4	8.00	0.00	793.4	
6	12400.9	90.20	90.02	6949.9	-1.8	5747.3	0.00	0.00	5747.3	Eagle E14-65-1HN BHL 2310'FSL, 785'FWL



WELL DETAILS: Eagle E14-65-1HN				
Ground Level: 4718.0				
0.0	0.0	Northing 1420783.95	Easting 3239556.04	Latitude 40.485260 Longitude -104.638770
Plan: APD - Rev 0 (Eagle E14-65-1HN/Original Drilling)				
Created By: Shailey Jewell		Date: 12:44, May 22 2013		
Checked: _____		Date: _____		
Reviewed: _____		Date: _____		
Approved: _____		Date: _____		

# **Northern Region Drilling**

**Wattenberg Field**

**E (06N-65W)**

**Eagle E14-65-1HN**

**Original Drilling**

**Plan: APD - Rev 0**

## **Standard Planning Report**

**22 May, 2013**

# Noble Energy Inc

## Planning Report

<b>Database:</b>	EDM Production	<b>Local Co-ordinate Reference:</b>	Well Eagle E14-65-1HN
<b>Company:</b>	Northern Region Drilling	<b>TVD Reference:</b>	WELL @ 4731.0usft (Original Well Elev.)
<b>Project:</b>	Wattenberg Field	<b>MD Reference:</b>	WELL @ 4731.0usft (Original Well Elev.)
<b>Site:</b>	E (06N-65W)	<b>North Reference:</b>	Grid
<b>Well:</b>	Eagle E14-65-1HN	<b>Survey Calculation Method:</b>	Minimum Curvature
<b>Wellbore:</b>	Original Drilling		
<b>Design:</b>	APD - Rev 0		

<b>Project</b>	Wattenberg Field, Weld County CO		
<b>Map System:</b>	US State Plane 1983	<b>System Datum:</b>	Mean Sea Level
<b>Geo Datum:</b>	North American Datum 1983		
<b>Map Zone:</b>	Colorado Northern Zone		Using geodetic scale factor

Site		E (06N-65W)			
Site Position:		Northing:	1,417,105.06 usft	Latitude:	40.475150
From:	Lat/Long	Easting:	3,240,006.32 usft	Longitude:	-104.637280
Position Uncertainty:	0.0 usft	Slot Radius:	13-3/16 "	Grid Convergence:	0.56 °

Well	Eagle E14-65-1HN					
Well Position	+N/-S	3,679.0 usft	Northing:	1,420,783.96 usft	Latitude:	40.485260
	+E/-W	-450.3 usft	Easting:	3,239,556.05 usft	Longitude:	-104.638770
Position Uncertainty		0.0 usft	Wellhead Elevation:		Ground Level:	4,718.0 usft

<b>Wellbore</b>	Original Drilling				
<b>Magnetics</b>	<b>Model Name</b>	<b>Sample Date</b>	<b>Declination (°)</b>	<b>Dip Angle (°)</b>	<b>Field Strength (nT)</b>
	IGRF200510	4/18/2013	8.51	67.09	53,022

<b>Design</b>	APD - Rev 0			
<b>Audit Notes:</b>				
<b>Version:</b>	<b>Phase:</b>	PROTOTYPE	<b>Tie On Depth:</b>	0.0
<b>Vertical Section:</b>	<b>Depth From (TVD) (usft)</b>	<b>+N/-S (usft)</b>	<b>+E/-W (usft)</b>	<b>Direction (°)</b>
	0.0	0.0	0.0	90.02

<b>Plan Sections</b>										
Measured Depth (usft)	Inclination (°)	Azimuth (°)	Vertical Depth (usft)	+N/-S (usft)	+E/-W (usft)	Dogleg Rate (°/100usft)	Build Rate (°/100usft)	Turn Rate (°/100usft)	TFO (°)	Target
0.0	0.00	0.00	0.0	0.0	0.0	0.00	0.00	0.00	0.00	
6,244.5	0.00	0.00	6,244.5	0.0	0.0	0.00	0.00	0.00	0.00	
7,307.0	85.00	90.02	6,957.9	-0.2	653.8	8.00	8.00	0.00	90.02	
7,382.0	85.00	90.02	6,964.5	-0.2	728.5	0.00	0.00	0.00	0.00	
7,447.0	90.20	90.02	6,967.2	-0.2	793.4	8.00	8.00	0.00	0.00	
12,400.9	90.20	90.02	6,949.9	-1.8	5,747.3	0.00	0.00	0.00	0.00	Eagle E14-65-1HN Bt

# Noble Energy Inc

## Planning Report

<b>Database:</b>	EDM Production	<b>Local Co-ordinate Reference:</b>	Well Eagle E14-65-1HN
<b>Company:</b>	Northern Region Drilling	<b>TVD Reference:</b>	WELL @ 4731.0usft (Original Well Elev.)
<b>Project:</b>	Wattenberg Field	<b>MD Reference:</b>	WELL @ 4731.0usft (Original Well Elev.)
<b>Site:</b>	E (06N-65W)	<b>North Reference:</b>	Grid
<b>Well:</b>	Eagle E14-65-1HN	<b>Survey Calculation Method:</b>	Minimum Curvature
<b>Wellbore:</b>	Original Drilling		
<b>Design:</b>	APD - Rev 0		

Planned Survey									
Measured Depth (usft)	Inclination (°)	Azimuth (°)	Vertical Depth (usft)	+N/-S (usft)	+E/-W (usft)	Vertical Section (usft)	Dogleg Rate (°/100usft)	Build Rate (°/100usft)	Turn Rate (°/100usft)
0.0	0.00	0.00	0.0	0.0	0.0	0.0	0.00	0.00	0.00
50.0	0.00	0.00	50.0	0.0	0.0	0.0	0.00	0.00	0.00
100.0	0.00	0.00	100.0	0.0	0.0	0.0	0.00	0.00	0.00
150.0	0.00	0.00	150.0	0.0	0.0	0.0	0.00	0.00	0.00
200.0	0.00	0.00	200.0	0.0	0.0	0.0	0.00	0.00	0.00
250.0	0.00	0.00	250.0	0.0	0.0	0.0	0.00	0.00	0.00
300.0	0.00	0.00	300.0	0.0	0.0	0.0	0.00	0.00	0.00
350.0	0.00	0.00	350.0	0.0	0.0	0.0	0.00	0.00	0.00
400.0	0.00	0.00	400.0	0.0	0.0	0.0	0.00	0.00	0.00
450.0	0.00	0.00	450.0	0.0	0.0	0.0	0.00	0.00	0.00
500.0	0.00	0.00	500.0	0.0	0.0	0.0	0.00	0.00	0.00
550.0	0.00	0.00	550.0	0.0	0.0	0.0	0.00	0.00	0.00
600.0	0.00	0.00	600.0	0.0	0.0	0.0	0.00	0.00	0.00
650.0	0.00	0.00	650.0	0.0	0.0	0.0	0.00	0.00	0.00
700.0	0.00	0.00	700.0	0.0	0.0	0.0	0.00	0.00	0.00
750.0	0.00	0.00	750.0	0.0	0.0	0.0	0.00	0.00	0.00
800.0	0.00	0.00	800.0	0.0	0.0	0.0	0.00	0.00	0.00
850.0	0.00	0.00	850.0	0.0	0.0	0.0	0.00	0.00	0.00
900.0	0.00	0.00	900.0	0.0	0.0	0.0	0.00	0.00	0.00
950.0	0.00	0.00	950.0	0.0	0.0	0.0	0.00	0.00	0.00
987.0	0.00	0.00	987.0	0.0	0.0	0.0	0.00	0.00	0.00
PIERRE									
1,000.0	0.00	0.00	1,000.0	0.0	0.0	0.0	0.00	0.00	0.00
1,050.0	0.00	0.00	1,050.0	0.0	0.0	0.0	0.00	0.00	0.00
1,100.0	0.00	0.00	1,100.0	0.0	0.0	0.0	0.00	0.00	0.00
1,150.0	0.00	0.00	1,150.0	0.0	0.0	0.0	0.00	0.00	0.00
1,200.0	0.00	0.00	1,200.0	0.0	0.0	0.0	0.00	0.00	0.00
1,250.0	0.00	0.00	1,250.0	0.0	0.0	0.0	0.00	0.00	0.00
1,300.0	0.00	0.00	1,300.0	0.0	0.0	0.0	0.00	0.00	0.00
1,350.0	0.00	0.00	1,350.0	0.0	0.0	0.0	0.00	0.00	0.00
1,400.0	0.00	0.00	1,400.0	0.0	0.0	0.0	0.00	0.00	0.00
1,450.0	0.00	0.00	1,450.0	0.0	0.0	0.0	0.00	0.00	0.00
1,500.0	0.00	0.00	1,500.0	0.0	0.0	0.0	0.00	0.00	0.00
1,550.0	0.00	0.00	1,550.0	0.0	0.0	0.0	0.00	0.00	0.00
1,600.0	0.00	0.00	1,600.0	0.0	0.0	0.0	0.00	0.00	0.00
1,650.0	0.00	0.00	1,650.0	0.0	0.0	0.0	0.00	0.00	0.00
1,700.0	0.00	0.00	1,700.0	0.0	0.0	0.0	0.00	0.00	0.00
1,750.0	0.00	0.00	1,750.0	0.0	0.0	0.0	0.00	0.00	0.00
1,800.0	0.00	0.00	1,800.0	0.0	0.0	0.0	0.00	0.00	0.00
1,850.0	0.00	0.00	1,850.0	0.0	0.0	0.0	0.00	0.00	0.00
1,900.0	0.00	0.00	1,900.0	0.0	0.0	0.0	0.00	0.00	0.00
1,950.0	0.00	0.00	1,950.0	0.0	0.0	0.0	0.00	0.00	0.00
2,000.0	0.00	0.00	2,000.0	0.0	0.0	0.0	0.00	0.00	0.00
2,050.0	0.00	0.00	2,050.0	0.0	0.0	0.0	0.00	0.00	0.00
2,100.0	0.00	0.00	2,100.0	0.0	0.0	0.0	0.00	0.00	0.00
2,150.0	0.00	0.00	2,150.0	0.0	0.0	0.0	0.00	0.00	0.00
2,200.0	0.00	0.00	2,200.0	0.0	0.0	0.0	0.00	0.00	0.00
2,250.0	0.00	0.00	2,250.0	0.0	0.0	0.0	0.00	0.00	0.00
2,300.0	0.00	0.00	2,300.0	0.0	0.0	0.0	0.00	0.00	0.00
2,350.0	0.00	0.00	2,350.0	0.0	0.0	0.0	0.00	0.00	0.00
2,400.0	0.00	0.00	2,400.0	0.0	0.0	0.0	0.00	0.00	0.00
2,450.0	0.00	0.00	2,450.0	0.0	0.0	0.0	0.00	0.00	0.00
2,500.0	0.00	0.00	2,500.0	0.0	0.0	0.0	0.00	0.00	0.00
2,550.0	0.00	0.00	2,550.0	0.0	0.0	0.0	0.00	0.00	0.00

# Noble Energy Inc

## Planning Report

<b>Database:</b>	EDM Production	<b>Local Co-ordinate Reference:</b>	Well Eagle E14-65-1HN
<b>Company:</b>	Northern Region Drilling	<b>TVD Reference:</b>	WELL @ 4731.0usft (Original Well Elev.)
<b>Project:</b>	Wattenberg Field	<b>MD Reference:</b>	WELL @ 4731.0usft (Original Well Elev.)
<b>Site:</b>	E (06N-65W)	<b>North Reference:</b>	Grid
<b>Well:</b>	Eagle E14-65-1HN	<b>Survey Calculation Method:</b>	Minimum Curvature
<b>Wellbore:</b>	Original Drilling		
<b>Design:</b>	APD - Rev 0		

Planned Survey									
Measured Depth (usft)	Inclination (°)	Azimuth (°)	Vertical Depth (usft)	+N/-S (usft)	+E/-W (usft)	Vertical Section (usft)	Dogleg Rate (°/100usft)	Build Rate (°/100usft)	Turn Rate (°/100usft)
2,600.0	0.00	0.00	2,600.0	0.0	0.0	0.0	0.00	0.00	0.00
2,650.0	0.00	0.00	2,650.0	0.0	0.0	0.0	0.00	0.00	0.00
2,700.0	0.00	0.00	2,700.0	0.0	0.0	0.0	0.00	0.00	0.00
2,750.0	0.00	0.00	2,750.0	0.0	0.0	0.0	0.00	0.00	0.00
2,800.0	0.00	0.00	2,800.0	0.0	0.0	0.0	0.00	0.00	0.00
2,850.0	0.00	0.00	2,850.0	0.0	0.0	0.0	0.00	0.00	0.00
2,900.0	0.00	0.00	2,900.0	0.0	0.0	0.0	0.00	0.00	0.00
2,950.0	0.00	0.00	2,950.0	0.0	0.0	0.0	0.00	0.00	0.00
3,000.0	0.00	0.00	3,000.0	0.0	0.0	0.0	0.00	0.00	0.00
3,050.0	0.00	0.00	3,050.0	0.0	0.0	0.0	0.00	0.00	0.00
3,100.0	0.00	0.00	3,100.0	0.0	0.0	0.0	0.00	0.00	0.00
3,150.0	0.00	0.00	3,150.0	0.0	0.0	0.0	0.00	0.00	0.00
3,200.0	0.00	0.00	3,200.0	0.0	0.0	0.0	0.00	0.00	0.00
3,250.0	0.00	0.00	3,250.0	0.0	0.0	0.0	0.00	0.00	0.00
3,300.0	0.00	0.00	3,300.0	0.0	0.0	0.0	0.00	0.00	0.00
3,350.0	0.00	0.00	3,350.0	0.0	0.0	0.0	0.00	0.00	0.00
3,400.0	0.00	0.00	3,400.0	0.0	0.0	0.0	0.00	0.00	0.00
3,450.0	0.00	0.00	3,450.0	0.0	0.0	0.0	0.00	0.00	0.00
3,500.0	0.00	0.00	3,500.0	0.0	0.0	0.0	0.00	0.00	0.00
3,550.0	0.00	0.00	3,550.0	0.0	0.0	0.0	0.00	0.00	0.00
3,600.0	0.00	0.00	3,600.0	0.0	0.0	0.0	0.00	0.00	0.00
3,602.0	0.00	0.00	3,602.0	0.0	0.0	0.0	0.00	0.00	0.00
PARKMAN									
3,650.0	0.00	0.00	3,650.0	0.0	0.0	0.0	0.00	0.00	0.00
3,700.0	0.00	0.00	3,700.0	0.0	0.0	0.0	0.00	0.00	0.00
3,750.0	0.00	0.00	3,750.0	0.0	0.0	0.0	0.00	0.00	0.00
3,800.0	0.00	0.00	3,800.0	0.0	0.0	0.0	0.00	0.00	0.00
3,850.0	0.00	0.00	3,850.0	0.0	0.0	0.0	0.00	0.00	0.00
3,900.0	0.00	0.00	3,900.0	0.0	0.0	0.0	0.00	0.00	0.00
3,950.0	0.00	0.00	3,950.0	0.0	0.0	0.0	0.00	0.00	0.00
4,000.0	0.00	0.00	4,000.0	0.0	0.0	0.0	0.00	0.00	0.00
4,050.0	0.00	0.00	4,050.0	0.0	0.0	0.0	0.00	0.00	0.00
4,100.0	0.00	0.00	4,100.0	0.0	0.0	0.0	0.00	0.00	0.00
4,141.0	0.00	0.00	4,141.0	0.0	0.0	0.0	0.00	0.00	0.00
SUSSEX									
4,150.0	0.00	0.00	4,150.0	0.0	0.0	0.0	0.00	0.00	0.00
4,200.0	0.00	0.00	4,200.0	0.0	0.0	0.0	0.00	0.00	0.00
4,250.0	0.00	0.00	4,250.0	0.0	0.0	0.0	0.00	0.00	0.00
4,300.0	0.00	0.00	4,300.0	0.0	0.0	0.0	0.00	0.00	0.00
4,350.0	0.00	0.00	4,350.0	0.0	0.0	0.0	0.00	0.00	0.00
4,400.0	0.00	0.00	4,400.0	0.0	0.0	0.0	0.00	0.00	0.00
4,450.0	0.00	0.00	4,450.0	0.0	0.0	0.0	0.00	0.00	0.00
4,500.0	0.00	0.00	4,500.0	0.0	0.0	0.0	0.00	0.00	0.00
4,550.0	0.00	0.00	4,550.0	0.0	0.0	0.0	0.00	0.00	0.00
4,600.0	0.00	0.00	4,600.0	0.0	0.0	0.0	0.00	0.00	0.00
4,650.0	0.00	0.00	4,650.0	0.0	0.0	0.0	0.00	0.00	0.00
4,700.0	0.00	0.00	4,700.0	0.0	0.0	0.0	0.00	0.00	0.00
4,750.0	0.00	0.00	4,750.0	0.0	0.0	0.0	0.00	0.00	0.00
4,800.0	0.00	0.00	4,800.0	0.0	0.0	0.0	0.00	0.00	0.00
4,850.0	0.00	0.00	4,850.0	0.0	0.0	0.0	0.00	0.00	0.00
4,900.0	0.00	0.00	4,900.0	0.0	0.0	0.0	0.00	0.00	0.00
4,926.0	0.00	0.00	4,926.0	0.0	0.0	0.0	0.00	0.00	0.00
SHANNON									

# Noble Energy Inc

## Planning Report

<b>Database:</b>	EDM Production	<b>Local Co-ordinate Reference:</b>	Well Eagle E14-65-1HN
<b>Company:</b>	Northern Region Drilling	<b>TVD Reference:</b>	WELL @ 4731.0usft (Original Well Elev.)
<b>Project:</b>	Wattenberg Field	<b>MD Reference:</b>	WELL @ 4731.0usft (Original Well Elev.)
<b>Site:</b>	E (06N-65W)	<b>North Reference:</b>	Grid
<b>Well:</b>	Eagle E14-65-1HN	<b>Survey Calculation Method:</b>	Minimum Curvature
<b>Wellbore:</b>	Original Drilling		
<b>Design:</b>	APD - Rev 0		

Planned Survey									
Measured Depth (usft)	Inclination (°)	Azimuth (°)	Vertical Depth (usft)	+N/-S (usft)	+E/-W (usft)	Vertical Section (usft)	Dogleg Rate (°/100usft)	Build Rate (°/100usft)	Turn Rate (°/100usft)
4,950.0	0.00	0.00	4,950.0	0.0	0.0	0.0	0.00	0.00	0.00
5,000.0	0.00	0.00	5,000.0	0.0	0.0	0.0	0.00	0.00	0.00
5,050.0	0.00	0.00	5,050.0	0.0	0.0	0.0	0.00	0.00	0.00
5,100.0	0.00	0.00	5,100.0	0.0	0.0	0.0	0.00	0.00	0.00
5,150.0	0.00	0.00	5,150.0	0.0	0.0	0.0	0.00	0.00	0.00
5,200.0	0.00	0.00	5,200.0	0.0	0.0	0.0	0.00	0.00	0.00
5,250.0	0.00	0.00	5,250.0	0.0	0.0	0.0	0.00	0.00	0.00
5,300.0	0.00	0.00	5,300.0	0.0	0.0	0.0	0.00	0.00	0.00
5,350.0	0.00	0.00	5,350.0	0.0	0.0	0.0	0.00	0.00	0.00
5,400.0	0.00	0.00	5,400.0	0.0	0.0	0.0	0.00	0.00	0.00
5,450.0	0.00	0.00	5,450.0	0.0	0.0	0.0	0.00	0.00	0.00
5,500.0	0.00	0.00	5,500.0	0.0	0.0	0.0	0.00	0.00	0.00
5,550.0	0.00	0.00	5,550.0	0.0	0.0	0.0	0.00	0.00	0.00
5,600.0	0.00	0.00	5,600.0	0.0	0.0	0.0	0.00	0.00	0.00
5,650.0	0.00	0.00	5,650.0	0.0	0.0	0.0	0.00	0.00	0.00
5,700.0	0.00	0.00	5,700.0	0.0	0.0	0.0	0.00	0.00	0.00
5,750.0	0.00	0.00	5,750.0	0.0	0.0	0.0	0.00	0.00	0.00
5,800.0	0.00	0.00	5,800.0	0.0	0.0	0.0	0.00	0.00	0.00
5,850.0	0.00	0.00	5,850.0	0.0	0.0	0.0	0.00	0.00	0.00
5,900.0	0.00	0.00	5,900.0	0.0	0.0	0.0	0.00	0.00	0.00
5,950.0	0.00	0.00	5,950.0	0.0	0.0	0.0	0.00	0.00	0.00
5,982.0	0.00	0.00	5,982.0	0.0	0.0	0.0	0.00	0.00	0.00
TEEPEE BUTTES									
6,000.0	0.00	0.00	6,000.0	0.0	0.0	0.0	0.00	0.00	0.00
6,050.0	0.00	0.00	6,050.0	0.0	0.0	0.0	0.00	0.00	0.00
6,100.0	0.00	0.00	6,100.0	0.0	0.0	0.0	0.00	0.00	0.00
6,150.0	0.00	0.00	6,150.0	0.0	0.0	0.0	0.00	0.00	0.00
6,200.0	0.00	0.00	6,200.0	0.0	0.0	0.0	0.00	0.00	0.00
6,244.5	0.00	0.00	6,244.5	0.0	0.0	0.0	0.00	0.00	0.00
KOP - Start Build 8.00									
6,250.0	0.44	90.02	6,250.0	0.0	0.0	0.0	8.00	8.00	0.00
6,300.0	4.44	90.02	6,299.9	0.0	2.2	2.2	8.00	8.00	0.00
6,350.0	8.44	90.02	6,349.6	0.0	7.8	7.8	8.00	8.00	0.00
6,400.0	12.44	90.02	6,398.8	0.0	16.8	16.8	8.00	8.00	0.00
6,450.0	16.44	90.02	6,447.2	0.0	29.3	29.3	8.00	8.00	0.00
6,500.0	20.44	90.02	6,494.6	0.0	45.1	45.1	8.00	8.00	0.00
6,550.0	24.44	90.02	6,540.8	0.0	64.2	64.2	8.00	8.00	0.00
6,600.0	28.44	90.02	6,585.6	0.0	86.5	86.5	8.00	8.00	0.00
6,650.0	32.44	90.02	6,628.7	0.0	111.8	111.8	8.00	8.00	0.00
6,700.0	36.44	90.02	6,669.9	0.0	140.1	140.1	8.00	8.00	0.00
6,750.0	40.44	90.02	6,709.1	-0.1	171.1	171.1	8.00	8.00	0.00
6,759.2	41.18	90.02	6,716.0	-0.1	177.1	177.1	8.00	8.00	0.00
SHARON SPRINGS									
6,800.0	44.44	90.02	6,745.9	-0.1	204.9	204.9	8.00	8.00	0.00
6,800.1	44.44	90.02	6,746.0	-0.1	204.9	204.9	0.00	0.00	0.00
NIO A CHALK									
6,828.7	46.74	90.02	6,766.0	-0.1	225.3	225.3	8.02	8.02	0.00
NIO A MARL									
6,850.0	48.44	90.02	6,780.4	-0.1	241.1	241.1	8.00	8.00	0.00
6,900.0	52.44	90.02	6,812.2	-0.1	279.6	279.6	8.00	8.00	0.00
6,950.0	56.44	90.02	6,841.3	-0.1	320.3	320.3	8.00	8.00	0.00
6,989.1	59.57	90.02	6,862.0	-0.1	353.4	353.4	8.00	8.00	0.00
NIO B CHALK									

# Noble Energy Inc

## Planning Report

<b>Database:</b>	EDM Production	<b>Local Co-ordinate Reference:</b>	Well Eagle E14-65-1HN
<b>Company:</b>	Northern Region Drilling	<b>TVD Reference:</b>	WELL @ 4731.0usft (Original Well Elev.)
<b>Project:</b>	Wattenberg Field	<b>MD Reference:</b>	WELL @ 4731.0usft (Original Well Elev.)
<b>Site:</b>	E (06N-65W)	<b>North Reference:</b>	Grid
<b>Well:</b>	Eagle E14-65-1HN	<b>Survey Calculation Method:</b>	Minimum Curvature
<b>Wellbore:</b>	Original Drilling		
<b>Design:</b>	APD - Rev 0		

Planned Survey									
Measured Depth (usft)	Inclination (°)	Azimuth (°)	Vertical Depth (usft)	+N/-S (usft)	+E/-W (usft)	Vertical Section (usft)	Dogleg Rate (°/100usft)	Build Rate (°/100usft)	Turn Rate (°/100usft)
7,000.0	60.44	90.02	6,867.5	-0.1	362.9	362.9	8.00	8.00	0.00
<b>Dinner E 14-5 BHL</b>									
7,050.0	64.44	90.02	6,890.6	-0.1	407.2	407.2	8.00	8.00	0.00
7,060.4	65.27	90.02	6,895.0	-0.1	416.6	416.6	8.00	8.00	0.00
<b>NIO B MARL</b>									
7,100.0	68.44	90.02	6,910.6	-0.1	453.0	453.0	8.00	8.00	0.00
7,150.0	72.44	90.02	6,927.3	-0.2	500.2	500.2	8.00	8.00	0.00
7,200.0	76.44	90.02	6,940.7	-0.2	548.3	548.3	8.00	8.00	0.00
7,205.6	76.89	90.02	6,942.0	-0.2	553.8	553.8	8.00	8.00	0.00
<b>NIO C CHALK</b>									
7,250.0	80.44	90.02	6,950.7	-0.2	597.3	597.3	8.00	8.00	0.00
7,300.0	84.44	90.02	6,957.3	-0.2	646.8	646.8	8.00	8.00	0.00
7,307.0	85.00	90.02	6,957.9	-0.2	653.8	653.8	7.96	7.96	0.00
<b>Start 75.0 hold at 7307.0 MD - 7" Casing @ 7307.0' MD</b>									
7,350.0	85.00	90.02	6,961.7	-0.2	696.6	696.6	0.00	0.00	0.00
7,382.0	85.00	90.02	6,964.5	-0.2	728.5	728.5	0.00	0.00	0.00
<b>Start Build 8.00</b>									
7,400.0	86.44	90.02	6,965.8	-0.2	746.5	746.5	8.00	8.00	0.00
7,447.0	90.20	90.02	6,967.2	-0.2	793.4	793.4	8.00	8.00	0.00
7,450.0	90.20	90.02	6,967.2	-0.2	796.4	796.4	0.00	0.00	0.00
7,500.0	90.20	90.02	6,967.0	-0.3	846.4	846.4	0.00	0.00	0.00
7,550.0	90.20	90.02	6,966.8	-0.3	896.4	896.4	0.00	0.00	0.00
7,600.0	90.20	90.02	6,966.7	-0.3	946.4	946.4	0.00	0.00	0.00
7,650.0	90.20	90.02	6,966.5	-0.3	996.4	996.4	0.00	0.00	0.00
7,700.0	90.20	90.02	6,966.3	-0.3	1,046.4	1,046.4	0.00	0.00	0.00
7,750.0	90.20	90.02	6,966.1	-0.3	1,096.4	1,096.4	0.00	0.00	0.00
7,800.0	90.20	90.02	6,966.0	-0.4	1,146.4	1,146.4	0.00	0.00	0.00
7,850.0	90.20	90.02	6,965.8	-0.4	1,196.4	1,196.4	0.00	0.00	0.00
7,900.0	90.20	90.02	6,965.6	-0.4	1,246.4	1,246.4	0.00	0.00	0.00
7,950.0	90.20	90.02	6,965.4	-0.4	1,296.4	1,296.4	0.00	0.00	0.00
8,000.0	90.20	90.02	6,965.3	-0.4	1,346.4	1,346.4	0.00	0.00	0.00
8,050.0	90.20	90.02	6,965.1	-0.4	1,396.4	1,396.4	0.00	0.00	0.00
8,100.0	90.20	90.02	6,964.9	-0.5	1,446.4	1,446.4	0.00	0.00	0.00
8,150.0	90.20	90.02	6,964.7	-0.5	1,496.4	1,496.4	0.00	0.00	0.00
8,154.5	90.20	90.02	6,964.7	-0.5	1,501.0	1,501.0	0.00	0.00	0.00
<b>Dinner 14-2 BHL</b>									
8,200.0	90.20	90.02	6,964.6	-0.5	1,546.4	1,546.4	0.00	0.00	0.00
8,250.0	90.20	90.02	6,964.4	-0.5	1,596.4	1,596.4	0.00	0.00	0.00
8,300.0	90.20	90.02	6,964.2	-0.5	1,646.4	1,646.4	0.00	0.00	0.00
8,350.0	90.20	90.02	6,964.0	-0.5	1,696.4	1,696.4	0.00	0.00	0.00
8,400.0	90.20	90.02	6,963.9	-0.5	1,746.4	1,746.4	0.00	0.00	0.00
8,450.0	90.20	90.02	6,963.7	-0.6	1,796.4	1,796.4	0.00	0.00	0.00
8,500.0	90.20	90.02	6,963.5	-0.6	1,846.4	1,846.4	0.00	0.00	0.00
8,550.0	90.20	90.02	6,963.3	-0.6	1,896.4	1,896.4	0.00	0.00	0.00
8,600.0	90.20	90.02	6,963.2	-0.6	1,946.4	1,946.4	0.00	0.00	0.00
8,650.0	90.20	90.02	6,963.0	-0.6	1,996.4	1,996.4	0.00	0.00	0.00
8,700.0	90.20	90.02	6,962.8	-0.6	2,046.4	2,046.4	0.00	0.00	0.00
8,750.0	90.20	90.02	6,962.6	-0.7	2,096.4	2,096.4	0.00	0.00	0.00
8,800.0	90.20	90.02	6,962.5	-0.7	2,146.4	2,146.4	0.00	0.00	0.00
8,850.0	90.20	90.02	6,962.3	-0.7	2,196.4	2,196.4	0.00	0.00	0.00
8,900.0	90.20	90.02	6,962.1	-0.7	2,246.4	2,246.4	0.00	0.00	0.00
8,950.0	90.20	90.02	6,961.9	-0.7	2,296.4	2,296.4	0.00	0.00	0.00
9,000.0	90.20	90.02	6,961.8	-0.7	2,346.4	2,346.4	0.00	0.00	0.00

# Noble Energy Inc

## Planning Report

<b>Database:</b>	EDM Production	<b>Local Co-ordinate Reference:</b>	Well Eagle E14-65-1HN
<b>Company:</b>	Northern Region Drilling	<b>TVD Reference:</b>	WELL @ 4731.0usft (Original Well Elev.)
<b>Project:</b>	Wattenberg Field	<b>MD Reference:</b>	WELL @ 4731.0usft (Original Well Elev.)
<b>Site:</b>	E (06N-65W)	<b>North Reference:</b>	Grid
<b>Well:</b>	Eagle E14-65-1HN	<b>Survey Calculation Method:</b>	Minimum Curvature
<b>Wellbore:</b>	Original Drilling		
<b>Design:</b>	APD - Rev 0		

Planned Survey										
Measured Depth (usft)	Inclination (°)	Azimuth (°)	Vertical Depth (usft)	+N/-S (usft)	+E/-W (usft)	Vertical Section (usft)	Dogleg Rate (°/100usft)	Build Rate (°/100usft)	Turn Rate (°/100usft)	
9,050.0	90.20	90.02	6,961.6	-0.7	2,396.4	2,396.4	0.00	0.00	0.00	
9,100.0	90.20	90.02	6,961.4	-0.8	2,446.4	2,446.4	0.00	0.00	0.00	
9,150.0	90.20	90.02	6,961.2	-0.8	2,496.4	2,496.4	0.00	0.00	0.00	
9,200.0	90.20	90.02	6,961.1	-0.8	2,546.4	2,546.4	0.00	0.00	0.00	
9,250.0	90.20	90.02	6,960.9	-0.8	2,596.4	2,596.4	0.00	0.00	0.00	
9,300.0	90.20	90.02	6,960.7	-0.8	2,646.4	2,646.4	0.00	0.00	0.00	
9,350.0	90.20	90.02	6,960.5	-0.8	2,696.4	2,696.4	0.00	0.00	0.00	
9,400.0	90.20	90.02	6,960.4	-0.9	2,746.4	2,746.4	0.00	0.00	0.00	
9,450.0	90.20	90.02	6,960.2	-0.9	2,796.4	2,796.4	0.00	0.00	0.00	
9,500.0	90.20	90.02	6,960.0	-0.9	2,846.4	2,846.4	0.00	0.00	0.00	
9,550.0	90.20	90.02	6,959.9	-0.9	2,896.4	2,896.4	0.00	0.00	0.00	
9,600.0	90.20	90.02	6,959.7	-0.9	2,946.4	2,946.4	0.00	0.00	0.00	
9,624.3	90.20	90.02	6,959.6	-0.9	2,970.7	2,970.7	0.00	0.00	0.00	
Dinner 14-13										
9,650.0	90.20	90.02	6,959.5	-0.9	2,996.4	2,996.4	0.00	0.00	0.00	
9,700.0	90.20	90.02	6,959.3	-0.9	3,046.4	3,046.4	0.00	0.00	0.00	
9,750.0	90.20	90.02	6,959.2	-1.0	3,096.4	3,096.4	0.00	0.00	0.00	
9,800.0	90.20	90.02	6,959.0	-1.0	3,146.4	3,146.4	0.00	0.00	0.00	
9,850.0	90.20	90.02	6,958.8	-1.0	3,196.4	3,196.4	0.00	0.00	0.00	
9,900.0	90.20	90.02	6,958.6	-1.0	3,246.4	3,246.4	0.00	0.00	0.00	
9,950.0	90.20	90.02	6,958.5	-1.0	3,296.4	3,296.4	0.00	0.00	0.00	
10,000.0	90.20	90.02	6,958.3	-1.0	3,346.4	3,346.4	0.00	0.00	0.00	
10,050.0	90.20	90.02	6,958.1	-1.1	3,396.4	3,396.4	0.00	0.00	0.00	
10,100.0	90.20	90.02	6,957.9	-1.1	3,446.4	3,446.4	0.00	0.00	0.00	
10,150.0	90.20	90.02	6,957.8	-1.1	3,496.4	3,496.4	0.00	0.00	0.00	
10,200.0	90.20	90.02	6,957.6	-1.1	3,546.4	3,546.4	0.00	0.00	0.00	
10,250.0	90.20	90.02	6,957.4	-1.1	3,596.4	3,596.4	0.00	0.00	0.00	
10,300.0	90.20	90.02	6,957.2	-1.1	3,646.4	3,646.4	0.00	0.00	0.00	
10,350.0	90.20	90.02	6,957.1	-1.2	3,696.4	3,696.4	0.00	0.00	0.00	
10,400.0	90.20	90.02	6,956.9	-1.2	3,746.4	3,746.4	0.00	0.00	0.00	
10,450.0	90.20	90.02	6,956.7	-1.2	3,796.4	3,796.4	0.00	0.00	0.00	
10,500.0	90.20	90.02	6,956.5	-1.2	3,846.4	3,846.4	0.00	0.00	0.00	
10,550.0	90.20	90.02	6,956.4	-1.2	3,896.4	3,896.4	0.00	0.00	0.00	
10,600.0	90.20	90.02	6,956.2	-1.2	3,946.4	3,946.4	0.00	0.00	0.00	
10,650.0	90.20	90.02	6,956.0	-1.2	3,996.4	3,996.4	0.00	0.00	0.00	
10,700.0	90.20	90.02	6,955.8	-1.3	4,046.4	4,046.4	0.00	0.00	0.00	
10,750.0	90.20	90.02	6,955.7	-1.3	4,096.4	4,096.4	0.00	0.00	0.00	
10,800.0	90.20	90.02	6,955.5	-1.3	4,146.4	4,146.4	0.00	0.00	0.00	
10,850.0	90.20	90.02	6,955.3	-1.3	4,196.4	4,196.4	0.00	0.00	0.00	
10,900.0	90.20	90.02	6,955.1	-1.3	4,246.4	4,246.4	0.00	0.00	0.00	
10,950.0	90.20	90.02	6,955.0	-1.3	4,296.4	4,296.4	0.00	0.00	0.00	
10,977.1	90.20	90.02	6,954.9	-1.3	4,323.5	4,323.5	0.00	0.00	0.00	
Schwisow E14-09 BHL										
11,000.0	90.20	90.02	6,954.8	-1.4	4,346.4	4,346.4	0.00	0.00	0.00	
11,050.0	90.20	90.02	6,954.6	-1.4	4,396.4	4,396.4	0.00	0.00	0.00	
11,100.0	90.20	90.02	6,954.4	-1.4	4,446.4	4,446.4	0.00	0.00	0.00	
11,150.0	90.20	90.02	6,954.3	-1.4	4,496.4	4,496.4	0.00	0.00	0.00	
11,200.0	90.20	90.02	6,954.1	-1.4	4,546.4	4,546.4	0.00	0.00	0.00	
11,250.0	90.20	90.02	6,953.9	-1.4	4,596.4	4,596.4	0.00	0.00	0.00	
11,300.0	90.20	90.02	6,953.7	-1.4	4,646.4	4,646.4	0.00	0.00	0.00	
11,350.0	90.20	90.02	6,953.6	-1.5	4,696.4	4,696.4	0.00	0.00	0.00	
11,400.0	90.20	90.02	6,953.4	-1.5	4,746.4	4,746.4	0.00	0.00	0.00	
11,450.0	90.20	90.02	6,953.2	-1.5	4,796.4	4,796.4	0.00	0.00	0.00	
11,500.0	90.20	90.02	6,953.0	-1.5	4,846.4	4,846.4	0.00	0.00	0.00	



# Noble Energy Inc

## Planning Report

<b>Database:</b>	EDM Production	<b>Local Co-ordinate Reference:</b>	Well Eagle E14-65-1HN
<b>Company:</b>	Northern Region Drilling	<b>TVD Reference:</b>	WELL @ 4731.0usft (Original Well Elev.)
<b>Project:</b>	Wattenberg Field	<b>MD Reference:</b>	WELL @ 4731.0usft (Original Well Elev.)
<b>Site:</b>	E (06N-65W)	<b>North Reference:</b>	Grid
<b>Well:</b>	Eagle E14-65-1HN	<b>Survey Calculation Method:</b>	Minimum Curvature
<b>Wellbore:</b>	Original Drilling		
<b>Design:</b>	APD - Rev 0		

Planned Survey										
Measured Depth (usft)	Inclination (°)	Azimuth (°)	Vertical Depth (usft)	+N/-S (usft)	+E/-W (usft)	Vertical Section (usft)	Dogleg Rate (°/100usft)	Build Rate (°/100usft)	Turn Rate (°/100usft)	
11,550.0	90.20	90.02	6,952.9	-1.5	4,896.4	4,896.4	0.00	0.00	0.00	
11,600.0	90.20	90.02	6,952.7	-1.5	4,946.4	4,946.4	0.00	0.00	0.00	
11,650.0	90.20	90.02	6,952.5	-1.6	4,996.4	4,996.4	0.00	0.00	0.00	
11,700.0	90.20	90.02	6,952.3	-1.6	5,046.4	5,046.4	0.00	0.00	0.00	
11,750.0	90.20	90.02	6,952.2	-1.6	5,096.4	5,096.4	0.00	0.00	0.00	
11,800.0	90.20	90.02	6,952.0	-1.6	5,146.4	5,146.4	0.00	0.00	0.00	
11,850.0	90.20	90.02	6,951.8	-1.6	5,196.4	5,196.4	0.00	0.00	0.00	
11,900.0	90.20	90.02	6,951.6	-1.6	5,246.4	5,246.4	0.00	0.00	0.00	
11,950.0	90.20	90.02	6,951.5	-1.7	5,296.4	5,296.4	0.00	0.00	0.00	
12,000.0	90.20	90.02	6,951.3	-1.7	5,346.4	5,346.4	0.00	0.00	0.00	
12,050.0	90.20	90.02	6,951.1	-1.7	5,396.4	5,396.4	0.00	0.00	0.00	
12,100.0	90.20	90.02	6,951.0	-1.7	5,446.4	5,446.4	0.00	0.00	0.00	
12,150.0	90.20	90.02	6,950.8	-1.7	5,496.4	5,496.4	0.00	0.00	0.00	
12,200.0	90.20	90.02	6,950.6	-1.7	5,546.4	5,546.4	0.00	0.00	0.00	
12,250.0	90.20	90.02	6,950.4	-1.7	5,596.4	5,596.4	0.00	0.00	0.00	
12,300.0	90.20	90.02	6,950.3	-1.8	5,646.4	5,646.4	0.00	0.00	0.00	
12,350.0	90.20	90.02	6,950.1	-1.8	5,696.4	5,696.4	0.00	0.00	0.00	
12,400.0	90.20	90.02	6,949.9	-1.8	5,746.4	5,746.4	0.00	0.00	0.00	
12,400.9	90.20	90.02	6,949.9	-1.8	5,747.3	5,747.3	0.00	0.00	0.00	
TD at 12400.9 - Eagle E14-65-1HN BHL 2310'FSL, 785'FWL										

Design Targets									
Target Name	Dip Angle (°)	Dip Dir. (°)	TVD (usft)	+N/-S (usft)	+E/-W (usft)	Northing (usft)	Easting (usft)	Latitude	Longitude
- hit/miss target									
- Shape									
Eagle E14-65-1HN BHL	0.00	0.00	6,949.9	-1.8	5,747.3	1,420,782.16	3,245,303.14	40.485100	-104.618110
- plan hits target center									
- Point									
Dinner 14-2 BHL	0.00	0.01	6,999.0	936.4	1,501.4	1,421,720.32	3,241,057.38	40.487790	-104.633340
- plan misses target center by 937.5usft at 8154.5usft MD (6964.7 TVD, -0.5 N, 1501.0 E)									
- Circle (radius 150.0)									
Schwisow E14-09 BHL	0.00	0.00	6,999.0	-340.2	4,323.6	1,420,443.79	3,243,879.45	40.484210	-104.623240
- plan misses target center by 341.7usft at 10977.1usft MD (6954.9 TVD, -1.3 N, 4323.5 E)									
- Circle (radius 150.0)									
Dinner 14-13	0.00	0.00	6,999.0	837.9	2,971.1	1,421,621.79	3,242,527.05	40.487480	-104.628060
- plan misses target center by 839.7usft at 9624.3usft MD (6959.6 TVD, -0.9 N, 2970.7 E)									
- Circle (radius 150.0)									
Dinner E 14-5 BHL	0.00	0.00	6,999.0	968.3	288.2	1,421,752.21	3,239,844.28	40.487910	-104.637700
- plan misses target center by 980.1usft at 7000.0usft MD (6867.5 TVD, -0.1 N, 362.9 E)									
- Circle (radius 150.0)									

Casing Points				
Measured Depth (usft)	Vertical Depth (usft)	Name	Casing Diameter (")	Hole Diameter (")
7,307.0	6,957.9	7" Casing @ 7307.0' MD	7	8-3/4

# Noble Energy Inc

## Planning Report

<b>Database:</b>	EDM Production	<b>Local Co-ordinate Reference:</b>	Well Eagle E14-65-1HN
<b>Company:</b>	Northern Region Drilling	<b>TVD Reference:</b>	WELL @ 4731.0usft (Original Well Elev.)
<b>Project:</b>	Wattenberg Field	<b>MD Reference:</b>	WELL @ 4731.0usft (Original Well Elev.)
<b>Site:</b>	E (06N-65W)	<b>North Reference:</b>	Grid
<b>Well:</b>	Eagle E14-65-1HN	<b>Survey Calculation Method:</b>	Minimum Curvature
<b>Wellbore:</b>	Original Drilling		
<b>Design:</b>	APD - Rev 0		

Formations						
Measured Depth (usft)	Vertical Depth (usft)	Name	Lithology	Dip (°)	Dip Direction (°)	
987.0	987.0	PIERRE		0.00		
3,602.0	3,602.0	PARKMAN		0.00		
4,141.0	4,141.0	SUSSEX		0.00		
4,926.0	4,926.0	SHANNON		0.00		
5,982.0	5,982.0	TEEPEE BUTTES		0.00		
6,759.2	6,716.0	SHARON SPRINGS		0.00		
6,800.1	6,746.0	NIO A CHALK		0.00		
6,828.7	6,766.0	NIO A MARL		0.00		
6,989.1	6,862.0	NIO B CHALK		0.00		
7,060.4	6,895.0	NIO B MARL		0.00		
7,205.6	6,942.0	NIO C CHALK		0.00		

Plan Annotations					
Measured Depth (usft)	Vertical Depth (usft)	Local Coordinates			
		+N/-S (usft)	+E/-W (usft)	Comment	
6,244.5	6,244.5	0.0	0.0	KOP - Start Build 8.00	
7,307.0	6,957.9	-0.2	653.8	Start 75.0 hold at 7307.0 MD	
7,382.0	6,964.5	-0.2	728.5	Start Build 8.00	
12,400.9	6,949.9	-1.8	5,747.3	TD at 12400.9	

# **Northern Region Drilling**

**Wattenberg Field**

**E (06N-65W)**

**Eagle E14-65-1HN**

**Original Drilling**

**APD - Rev 0**

## **Anticollision Summary Report**

**22 May, 2013**

**Noble Energy Inc**  
Anticollision Summary Report

<b>Company:</b>	Northern Region Drilling	<b>Local Co-ordinate Reference:</b>	Well Eagle E14-65-1HN
<b>Project:</b>	Wattenberg Field	<b>TVD Reference:</b>	WELL @ 4731.0usft (Original Well Elev.)
<b>Reference Site:</b>	E (06N-65W)	<b>MD Reference:</b>	WELL @ 4731.0usft (Original Well Elev.)
<b>Site Error:</b>	0.0 usft	<b>North Reference:</b>	Grid
<b>Reference Well:</b>	Eagle E14-65-1HN	<b>Survey Calculation Method:</b>	Minimum Curvature
<b>Well Error:</b>	0.0 usft	<b>Output errors are at</b>	2.54 sigma
<b>Reference Wellbore</b>	Original Drilling	<b>Database:</b>	EDM Production
<b>Reference Design:</b>	APD - Rev 0	<b>Offset TVD Reference:</b>	Offset Datum

<b>Reference</b>	APD - Rev 0		
<b>Filter type:</b>	NO GLOBAL FILTER: Using user defined selection & filtering criteria		
<b>Interpolation Method:</b>	Stations	<b>Error Model:</b>	ISCWSA
<b>Depth Range:</b>	Unlimited	<b>Scan Method:</b>	Closest Approach 3D
<b>Results Limited by:</b>	Maximum center-center distance of 10,000.0 usft	<b>Error Surface:</b>	Elliptical Conic
<b>Warning Levels Evaluated at:</b>	2.00 Sigma	<b>Casing Method:</b>	Not applied

<b>Survey Tool Program</b>	<b>Date</b>	5/22/2013		
<b>From (usft)</b>	<b>To (usft)</b>	<b>Survey (Wellbore)</b>	<b>Tool Name</b>	<b>Description</b>
0.0	12,400.9	APD - Rev 0 (Original Drilling)	MWD	MWD - Standard

Summary						
Site Name	Reference Measured Depth (usft)	Offset Measured Depth (usft)	Distance Between Centres (usft)	Distance Between Ellipses (usft)	Separation Factor	Warning
Offset Well - Wellbore - Design						
E (06N-65W)						
Dinner 14-13 - Original Drilling - Design #1	9,624.4	6,960.6	838.8	740.8	8.557	CC, ES
Dinner 14-13 - Original Drilling - Design #1	9,800.0	6,960.0	857.0	754.1	8.331	SF
Dinner 14-14 - Original Drilling - Design #1	11,139.9	6,941.9	803.4	664.4	5.780	CC, ES
Dinner 14-14 - Original Drilling - Design #1	11,300.0	6,937.1	819.2	675.8	5.712	SF
Dinner 14-2 - Original Drilling - Design #1	8,154.6	6,965.7	936.9	878.6	16.074	CC
Dinner 14-2 - Original Drilling - Design #1	8,200.0	6,965.6	938.0	878.5	15.774	ES
Dinner 14-2 - Original Drilling - Design #1	8,600.0	6,964.2	1,037.3	967.3	14.803	SF
Dinner 14-31 - Original Drilling - Original Drilling	8,124.4	6,973.8	388.2	332.1	6.917	CC, ES
Dinner 14-31 - Original Drilling - Original Drilling	8,200.0	6,972.1	395.5	337.4	6.808	SF
Dinner 14-32 - Original Drilling - Original Drilling	7,173.2	6,929.5	169.0	136.3	5.164	CC, ES
Dinner 14-32 - Original Drilling - Original Drilling	7,200.0	6,937.0	170.9	137.7	5.144	SF
Dinner E 14-5 - Original Drilling - Design #1	6,910.4	6,819.5	968.4	936.6	30.511	CC, ES
Dinner E 14-5 - Original Drilling - Design #1	7,800.0	6,967.0	1,294.1	1,244.9	26.271	SF
Dinner PC E14-65HN - Original Drilling - Original Drilling	624.3	636.3	114.0	112.1	58.040	CC
Dinner PC E14-65HN - Original Drilling - Original Drilling	2,025.5	2,037.5	118.9	110.9	14.887	ES
Dinner PC E14-65HN - Original Drilling - Original Drilling	11,100.0	11,330.0	509.2	233.1	1.844	SF
Eagle E14-64-1HN - Original Drilling - APD - Rev 0	1,200.0	1,200.0	44.5	39.4	8.658	CC, ES
Eagle E14-64-1HN - Original Drilling - APD - Rev 0	12,400.9	12,716.0	663.3	339.9	2.051	SF
Eagle E14-67-1HNA - Original Drilling - APD - Rev 0	1,075.6	1,075.6	22.2	17.6	4.852	CC
Eagle E14-67-1HNA - Original Drilling - APD - Rev 0	1,100.0	1,100.0	22.2	17.6	4.741	ES
Eagle E14-67-1HNA - Original Drilling - APD - Rev 0	1,200.0	1,199.7	23.0	17.9	4.476	SF
Eagle E14-67-1HNC - Original Drilling - APD - Rev 0	1,500.0	1,500.0	66.8	60.3	10.288	CC
Eagle E14-67-1HNC - Original Drilling - APD - Rev 0	1,600.0	1,599.9	66.9	59.9	9.636	ES
Eagle E14-67-1HNC - Original Drilling - APD - Rev 0	11,700.0	11,850.7	1,422.2	1,144.1	5.114	SF
Schwisow E14-09 - Original Drilling - Design #1	10,977.2	6,955.9	338.8	203.3	2.500	CC, ES
Schwisow E14-09 - Original Drilling - Design #1	11,000.0	6,955.8	339.6	203.4	2.494	SF

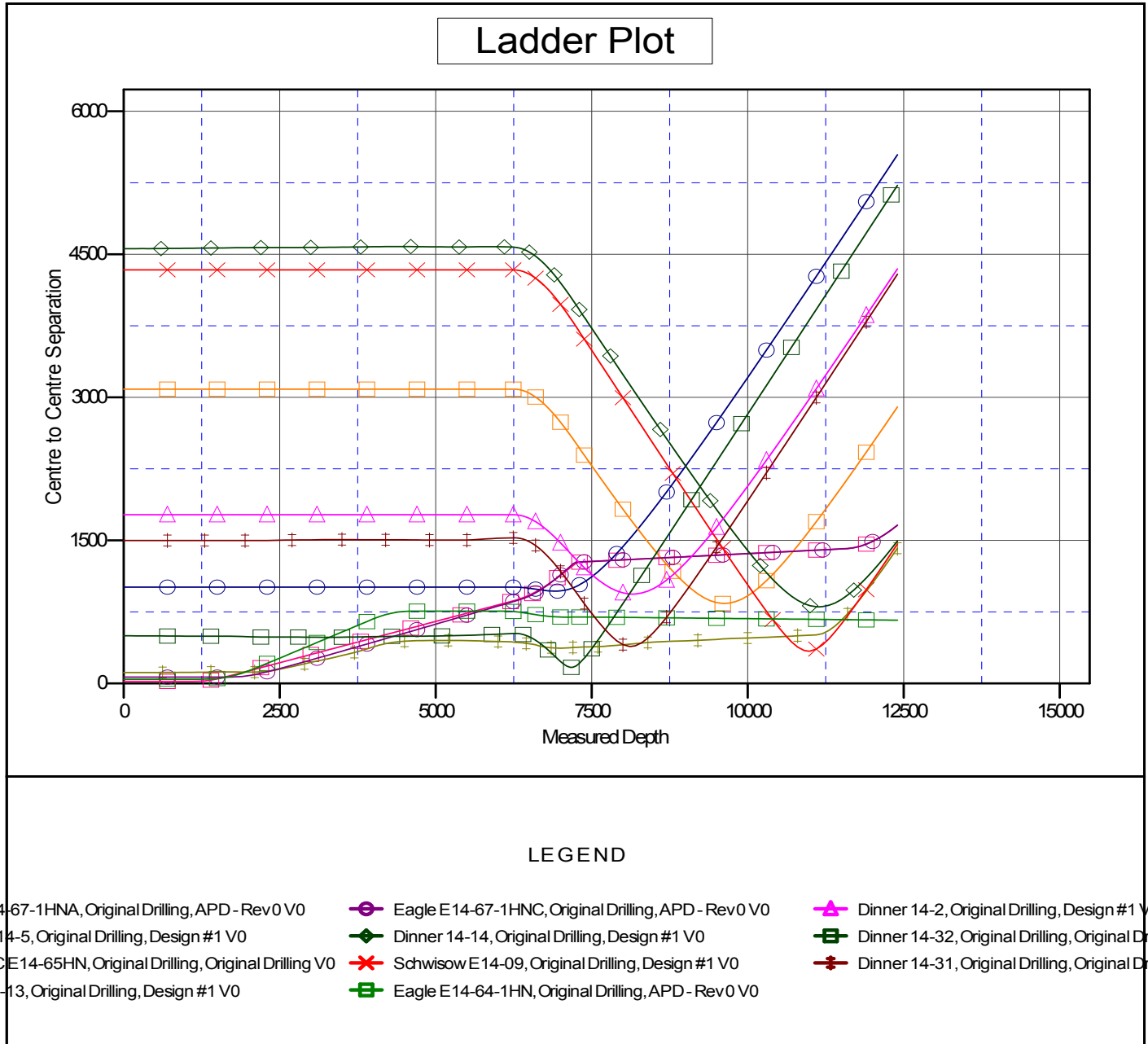
CC - Min centre to center distance or convergent point, SF - min separation factor, ES - min ellipse separation

**Noble Energy Inc**  
Anticollision Summary Report

<b>Company:</b>	Northern Region Drilling	<b>Local Co-ordinate Reference:</b>	Well Eagle E14-65-1HN
<b>Project:</b>	Wattenberg Field	<b>TVD Reference:</b>	WELL @ 4731.0usft (Original Well Elev.)
<b>Reference Site:</b>	E (06N-65W)	<b>MD Reference:</b>	WELL @ 4731.0usft (Original Well Elev.)
<b>Site Error:</b>	0.0 usft	<b>North Reference:</b>	Grid
<b>Reference Well:</b>	Eagle E14-65-1HN	<b>Survey Calculation Method:</b>	Minimum Curvature
<b>Well Error:</b>	0.0 usft	<b>Output errors are at</b>	2.54 sigma
<b>Reference Wellbore</b>	Original Drilling	<b>Database:</b>	EDM Production
<b>Reference Design:</b>	APD - Rev 0	<b>Offset TVD Reference:</b>	Offset Datum

Reference Depths are relative to WELL @ 4731.0usft (Original Well Ele  
Offset Depths are relative to Offset Datum  
Central Meridian is -105.500000

Coordinates are relative to: Eagle E14-65-1HN  
Coordinate System is US State Plane 1983, Colorado Northern Zone  
Grid Convergence at Surface is: 0.56°



CC - Min centre to center distance or convergent point, SF - min separation factor, ES - min ellipse separation

**Noble Energy Inc**  
Anticollision Summary Report

<b>Company:</b>	Northern Region Drilling	<b>Local Co-ordinate Reference:</b>	Well Eagle E14-65-1HN
<b>Project:</b>	Wattenberg Field	<b>TVD Reference:</b>	WELL @ 4731.0usft (Original Well Elev.)
<b>Reference Site:</b>	E (06N-65W)	<b>MD Reference:</b>	WELL @ 4731.0usft (Original Well Elev.)
<b>Site Error:</b>	0.0 usft	<b>North Reference:</b>	Grid
<b>Reference Well:</b>	Eagle E14-65-1HN	<b>Survey Calculation Method:</b>	Minimum Curvature
<b>Well Error:</b>	0.0 usft	<b>Output errors are at</b>	2.54 sigma
<b>Reference Wellbore</b>	Original Drilling	<b>Database:</b>	EDM Production
<b>Reference Design:</b>	APD - Rev 0	<b>Offset TVD Reference:</b>	Offset Datum

Reference Depths are relative to WELL @ 4731.0usft (Original Well Ele  
Offset Depths are relative to Offset Datum  
Central Meridian is -105.500000

Coordinates are relative to: Eagle E14-65-1HN  
Coordinate System is US State Plane 1983, Colorado Northern Zone  
Grid Convergence at Surface is: 0.56°

