

T8N, R90W, 6th P.M.

AXIA ENERGY

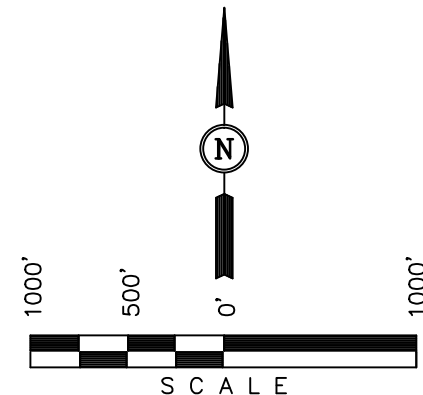
Well location, BULLDOG #15-21H-890 (SURFACE LOCATION), located as shown in LOT 2 of Section 15, T8N, R90W, 6th P.M., Moffat County, Colorado.

BASIS OF ELEVATION

SPOT ELEVATION LOCATED AT THE SOUTHWEST CORNER OF SECTION 15, T7N, R91W, 6th P.M. TAKEN FROM THE CRAIG QUADRANGLE, COLORADO, MOFFAT COUNTY, 7.5 MINUTE QUAD (TOPOGRAPHIC MAP) PUBLISHED BY THE UNITED STATES DEPARTMENT OF THE INTERIOR, GEOLOGICAL SURVEY. SAID ELEVATION IS MARKED AS BEING 6672 FEET.

BASIS OF BEARINGS

BASIS OF BEARINGS IS A G.P.S. OBSERVATION.



CERTIFICATE

THIS IS TO CERTIFY THAT THE ABOVE PLAT WAS PREPARED FROM FIELD NOTES OF ACTUAL SURVEYS MADE BY ME OR UNDER MY SUPERVISION AND THAT THE SAME ARE TRUE AND CORRECT TO THE BEST OF MY KNOWLEDGE AND BELIEF.

REGISTERED LAND SURVEYOR
REGISTRATION NO. 17492
STATE OF COLORADO

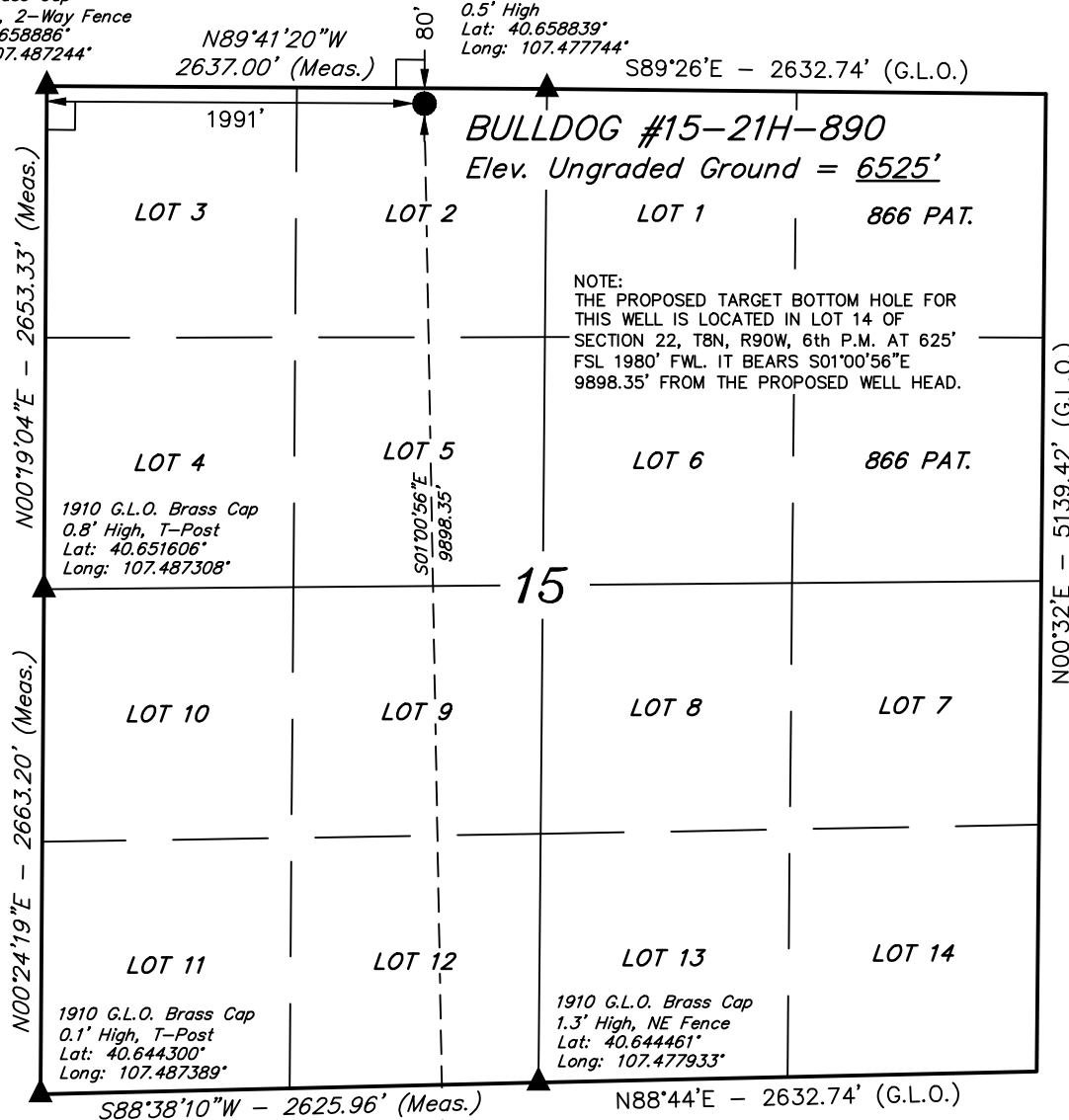
REVISED: 03-01-13

UINTAH ENGINEERING & LAND SURVEYING
85 SOUTH 200 EAST - VERNAL, UTAH 84078
(435) 789-1017

SCALE 1" = 1000'	DATE SURVEYED: 02-05-13	DATE DRAWN: 02-13-13
PARTY G.M. M.M. T.B.	REFERENCES G.L.O. PLAT	
WEATHER COLD	FILE AXIA ENERGY	

G.L.O. Brass Cap
1.2' High, 2-Way Fence
Lat: 40.658886°
Long: 107.487244°

1910 G.L.O. Brass Cap
0.5' High
Lat: 40.658839°
Long: 107.477744°



PDOP = 1.3

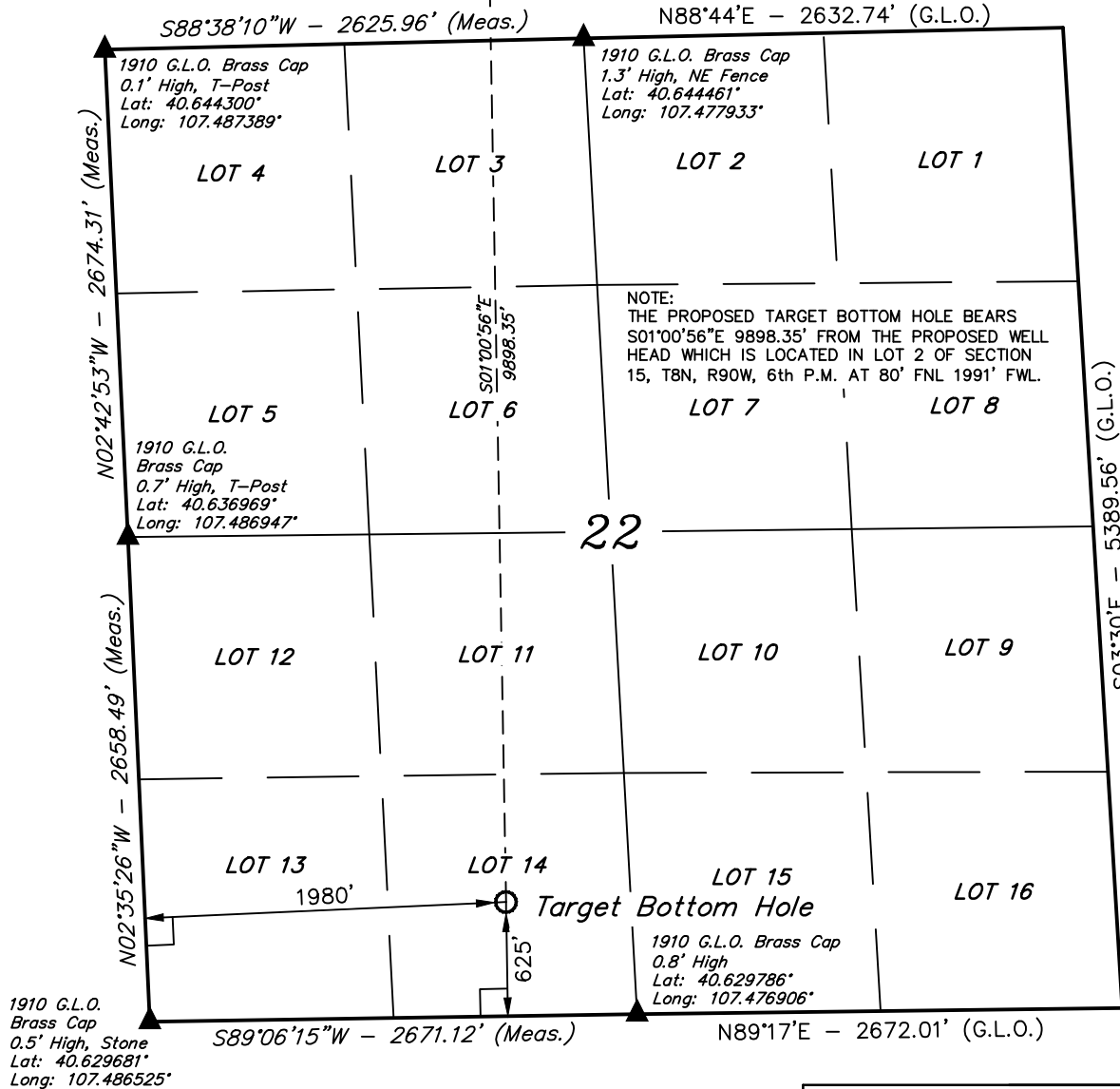
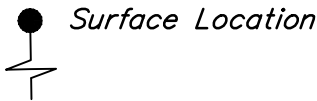
LEGEND:

- └─┘ = 90° SYMBOL
- = PROPOSED WELL HEAD.
- ▲ = SECTION CORNERS LOCATED.

Target Bottom Hole

NAD 83 (SURFACE LOCATION)	
LATITUDE =	40°39'31.07" (40.658631)
LONGITUDE =	107°28'48.27" (107.480075)
NAD 27 (SURFACE LOCATION)	
LATITUDE =	40°39'31.17" (40.658658)
LONGITUDE =	107°28'46.04" (107.479456)
STATE PLANE NAD 83	
N: 1488914.70	E: 2450678.46
STATE PLANE NAD 27	
N: 488913.33	E: 1450835.88

T8N, R90W, 6th P.M.



LEGEND:

- └─┘ = 90° SYMBOL
- = PROPOSED WELL HEAD.
- ▲ = SECTION CORNERS LOCATED.

NAD 83 (TARGET BOTTOM HOLE)	
LATITUDE	= 40°37'53.30" (40.631472)
LONGITUDE	= 107°28'46.17" (107.479492)
NAD 27 (TARGET BOTTOM HOLE)	
LATITUDE	= 40°37'53.41" (40.631503)
LONGITUDE	= 107°28'43.94" (107.478872)
STATE PLANE NAD 83	
N: 1479019.85	E: 2450619.33
STATE PLANE NAD 27	
N: 479018.54	E: 1450776.78

AXIA ENERGY

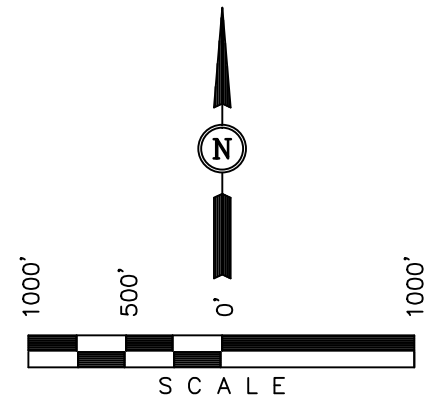
Well location, BULLDOG #15-21H-890 (TARGET BOTTOM HOLE), located as shown in LOT 14 of Section 22, T8N, R90W, 6th P.M., Moffat County, Colorado.

BASIS OF ELEVATION

SPOT ELEVATION LOCATED AT THE SOUTHWEST CORNER OF SECTION 15, T7N, R91W, 6th P.M. TAKEN FROM THE CRAIG QUADRANGLE, COLORADO, MOFFAT COUNTY, 7.5 MINUTE QUAD (TOPOGRAPHIC MAP) PUBLISHED BY THE UNITED STATES DEPARTMENT OF THE INTERIOR, GEOLOGICAL SURVEY. SAID ELEVATION IS MARKED AS BEING 6672 FEET.

BASIS OF BEARINGS

BASIS OF BEARINGS IS A G.P.S. OBSERVATION.



CERTIFICATE

THIS IS TO CERTIFY THAT THE ABOVE PLAT WAS PREPARED FROM FIELD NOTES OF ACTUAL SURVEYS MADE BY ME OR UNDER MY SUPERVISION AND THAT THE SAME ARE TRUE AND CORRECT TO THE BEST OF MY KNOWLEDGE AND BELIEF.

REGISTERED LAND SURVEYOR
REGISTRATION NO. 17492
STATE OF COLORADO
02-27-13

UINTAH ENGINEERING & LAND SURVEYING
85 SOUTH 200 EAST - VERNAL, UTAH 84078
(435) 789-1017

SCALE 1" = 1000'	DATE SURVEYED: 02-05-13	DATE DRAWN: 02-13-13
PARTY G.M. M.M. T.B.	REFERENCES G.L.O. PLAT	
WEATHER COLD	FILE	AXIA ENERGY