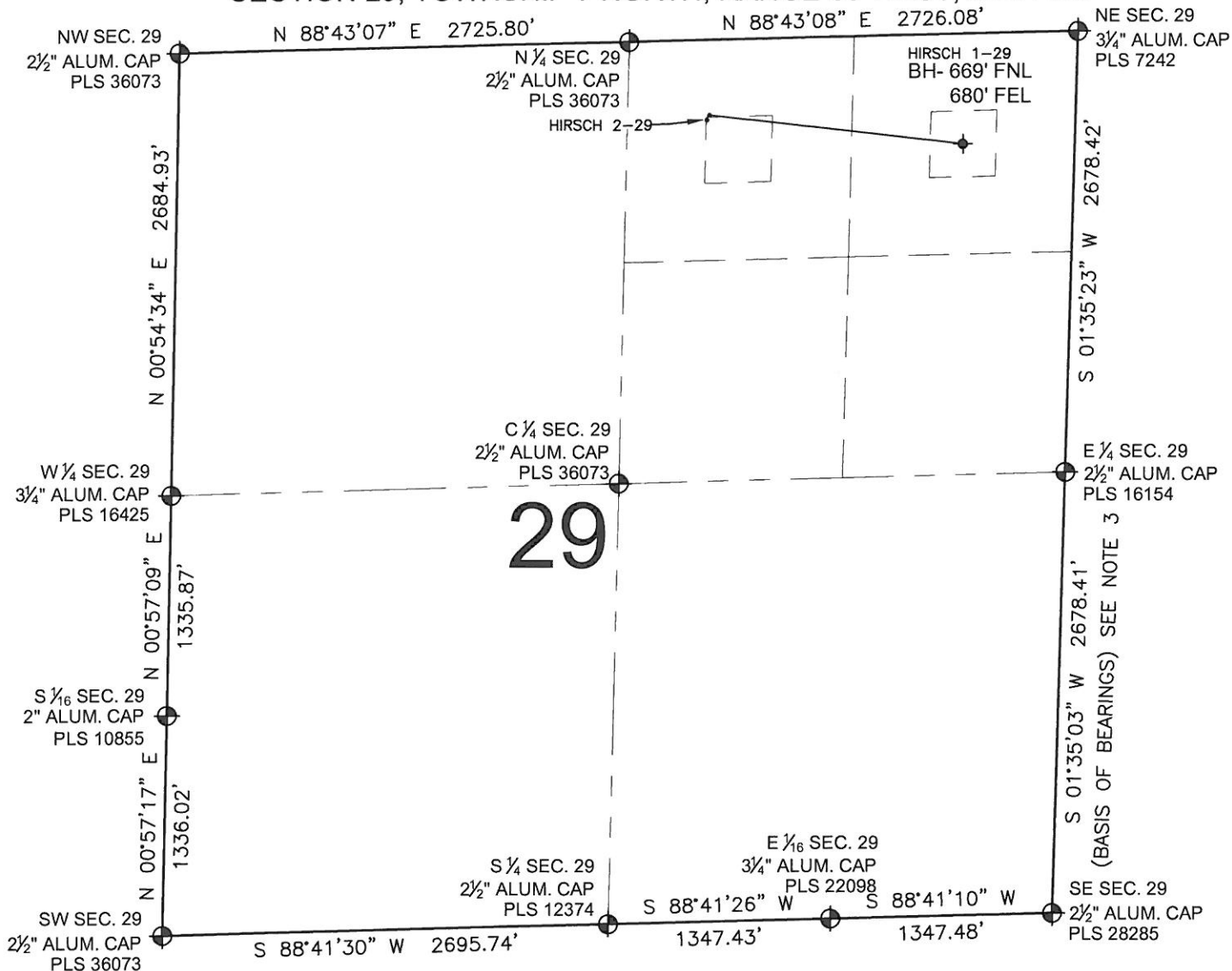


PAD DRAWING: HIRSCH 29-C PAD

SECTION 29, TOWNSHIP 7 NORTH, RANGE 66 WEST, 6TH P.M.



NOTES:

1. THIS FIELD SURVEY CONFORMS TO THE MINIMUM STANDARDS SET BY THE C.O.G.C.C., RULE NO. 215
2. HORIZONTAL POSITIONS AND ORTHOMETRIC ELEVATIONS SHOWN AT THE WELL HEAD, ARE BASED ON GPS-RTK POSITIONS DERIVED FROM MINIMUM 2-HOUR STATIC OBSERVATIONS CORRECTED BY THE NATIONAL GEODETIC SURVEY ONLINE POSITIONING USER SERVICE, O.P.U.S. DATUM: HORIZONTAL = NAD83/2011, VERTICAL = NAVD88
3. THE BASIS OF BEARINGS ARE STATE PLANE COORDINATE SYSTEM GRID BEARINGS SHOWN HEREON BETWEEN THE DESCRIBED MONUMENTS SHOWN HEREON.
4. GRID DISTANCES ARE SHOWN, AS MEASURED IN THE FIELD, WITH TIES TO WELLS MEASURED PERPENDICULAR TO SECTION LINES.

LEGEND

- = EXISTING MONUMENT
 = BOTTOM HOLE
 BH= BOTTOM HOLE
 = PROPOSED WELL
 = EXISTING WELL

NOTES:

HIRSCH 2-29 TO BE AT 475' FNL, 2235' FEL.
 HIRSCH 1-29 TO BE AT 464' FNL, 2225' FEL.
 BOTTOM HOLE AT 669' FNL & 680' FEL.

PREPARED BY:



BAYSWATER EXPLORATION & PRODUCTION, LLC

FIELD DATE: 05-22-13	PAD NAME: HIRSCH 29-C PAD
DRAWING DATE: 05-28-13	SURFACE LOCATION: NW 1/4 NE 1/4, SEC. 29, T7N, R66W, 6TH P.M.
BY: SMF	CHECKED: MLP
WELD COUNTY, COLORADO	

