

Liner cement

HALLIBURTON

Cementing Job Log

The Road to Excellence Starts with Safety

Sold To #: 338668	Ship To #: 2999933	Quote #:	Sales Order #: 900518170
Customer: CHEVRON - MID-CONTINENT EBIZ		Customer Rep:	
Well Name: Emerald	Well #: 77X	API/UWI #: 05-103-08480	
Field:	City (SAP): RANGELY	County/Parish: Rio Blanco	State: Colorado
Legal Description:			
Lat: N 0 deg. OR N 0 deg. 0 min. 0 secs.		Long: E 0 deg. OR E 0 deg. 0 min. 0 secs.	
Contractor:		Rig/Platform Name/Num:	
Job Purpose: Cement Liner		Ticket Amount:	
Well Type: Producing Well		Job Type: Cement Liner	
Sales Person: SCHWARTZ, MICHAEL		Srv Supervisor: HAMMOND, QUINN	MBU ID Emp #: 472403

Activity Description	Date/Time	Cht #	Rate bbl/min	Volume bbl		Pressure psig		Comments
				Stage	Total	Tubing	Casing	
Call Out	06/18/2013 03:00							CREW CALLED
Safety Huddle	06/18/2013 05:00							PRE TRIP SAFETY MEETING
Depart from Service Center or Other Site	06/18/2013 05:05							HEADED TO LOC
Arrive At Loc	06/18/2013 06:30							ON LOC WAIT ON CASERS
Safety Huddle	06/18/2013 06:35							PRE RIG UP MEETING
Rig-Up Equipment	06/18/2013 07:00							MIRU
Safety Huddle	06/18/2013 13:25							GO OVER JOB WIT RIG CREW AND CO REP
Other	06/18/2013 13:38		0.5	3				FLOOD LINES
Test Lines	06/18/2013 13:44							TEST TO 5000
Pump Spacer	06/18/2013 13:48		4	10	13		100.0	FRESH WATER SPACER
Pump Spacer	06/18/2013 13:50		4	20	33		110.0	SUPER FLUSH 10# LIQUID
Pump Spacer	06/18/2013 13:55		4	10	43		110.0	FRESH WATER
Pump Lead Cement	06/18/2013 13:57		4	43	86		120.0	HALCEM D:11.5 Y:2.44 W:13.72 SKS:100 BBLs:43
Pump Tail Cement	06/18/2013 14:10		4	87	173		130.0	SCAB LINER CEMENT D:13.5 Y:1.4 W:6.73 SKS:240 BBLs:60
Shutdown	06/18/2013 14:30							WASH UP
Drop Plug	06/18/2013 14:32							DROP PLUG

Sold To # : 338668

Ship To # :2999933

Quote # :

Sales Order # : 900518170

SUMMIT Version: 7.3.0081

Tuesday, June 18, 2013 04:36:00

Cementing Job Log

Activity Description	Date/Time	Cht #	Rate bbl/ min	Volume bbl		Pressure psig		Comments
				Stage	Total	Tubing	Casing	
Pump Displacement	06/18/2013 14:35		4	151	324		3650. 0	FRESH WATER DISP
Bump Plug	06/18/2013 15:55							LANDED AT 3650 PSI
Check Floats	06/18/2013 15:58							GOT 2 BBL BACK
Safety Huddle	06/18/2013 16:00							RIG DOWN MEETING
Rig-Down Equipment	06/18/2013 16:10							RIG DOWN
Safety Huddle	06/18/2013 17:30							PRE TRIP MEETING
Depart Location for Service Center or Other Site	06/18/2013 17:35							HEADED TO THE YARD
Other	06/18/2013 19:50							THANK YOU FOR USING HALLIBURTON CEMENT QRH

The Road to Excellence Starts with Safety

Sold To #: 338668	Ship To #: 2999933	Quote #:	Sales Order #: 900518170
Customer: CHEVRON - MID-CONTINENT EBIZ	Customer Rep:		
Well Name: Emerald	Well #: 77X	API/UWI #: 05-103-08480	
Field:	City (SAP): RANGELY	County/Parish: Rio Blanco	State: Colorado
Job Purpose: Cement Liner			
Well Type: Producing Well	Job Type: Cement Liner		
Sales Person: SCHWARTZ, MICHAEL	Srvc Supervisor: HAMMOND, QUINN	MBU ID Emp #: 472403	

Job Personnel

HES Emp Name	Exp Hrs	Emp #	HES Emp Name	Exp Hrs	Emp #	HES Emp Name	Exp Hrs	Emp #
BAKER, AUSTIN	6	513663	BRADLEY, ANDREW Lloyd	6	540042	CLARK, SHAUN Cameron	12	527195
HAMMOND, QUINN R	12	472403	WYATT, BARRETT Douglas	12	543562			

Equipment

HES Unit #	Distance-1 way	HES Unit #	Distance-1 way	HES Unit #	Distance-1 way	HES Unit #	Distance-1 way
10948687	60 mile	10973575	60 mile	10994447	60 mile	11360879	60 mile
11410666	60 mile	11410668	60 mile	11512092	60 mile	12153735	60 mile

Job Hours

Date	On Location Hours	Operating Hours	Date	On Location Hours	Operating Hours	Date	On Location Hours	Operating Hours

TOTAL Total is the sum of each column separately

Job

Formation Name	Formation Depth (MD)	Top	Bottom	Form Type	Job depth MD	Water Depth	Perforation Depth (MD)	From	To
				BHST	6575. ft				
				158 degF					

Job Times

Called Out	Date	Time	Time Zone
On Location	18 - Jun - 2013	03:00	MST
Job Started	18 - Jun - 2013	06:30	MST
Job Completed	18 - Jun - 2013	13:38	MST
Job Completed	18 - Jun - 2013	15:55	GMT
Departed Loc	18 - Jun - 2013	17:30	MST

Well Data

Description	New / Used	Max pressure psig	Size in	ID in	Weight lbm/ft	Thread	Grade	Top MD ft	Bottom MD ft	Top TVD ft	Bottom TVD ft
5.5" Tie-Back Liner	Unknown		5.5	4.892	17.			.	6575.		
7" Casing	Unknown		7.	6.366	23.			.	6624.		

Tools and Accessories

Type	Size	Qty	Make	Depth	Type	Size	Qty	Make	Depth	Type	Size	Qty	Make
Guide Shoe					Packer					Top Plug			
Float Shoe					Bridge Plug					Bottom Plug			
Float Collar					Retainer					SSR plug set			
Insert Float										Plug Container			
Stage Tool										Centralizers			

Miscellaneous Materials

Gelling Agt	Conc	Surfactant	Conc	Acid Type	Qty	Conc	%
Treatment Fld	Conc	Inhibitor	Conc	Sand Type	Size	Qty	

Fluid Data

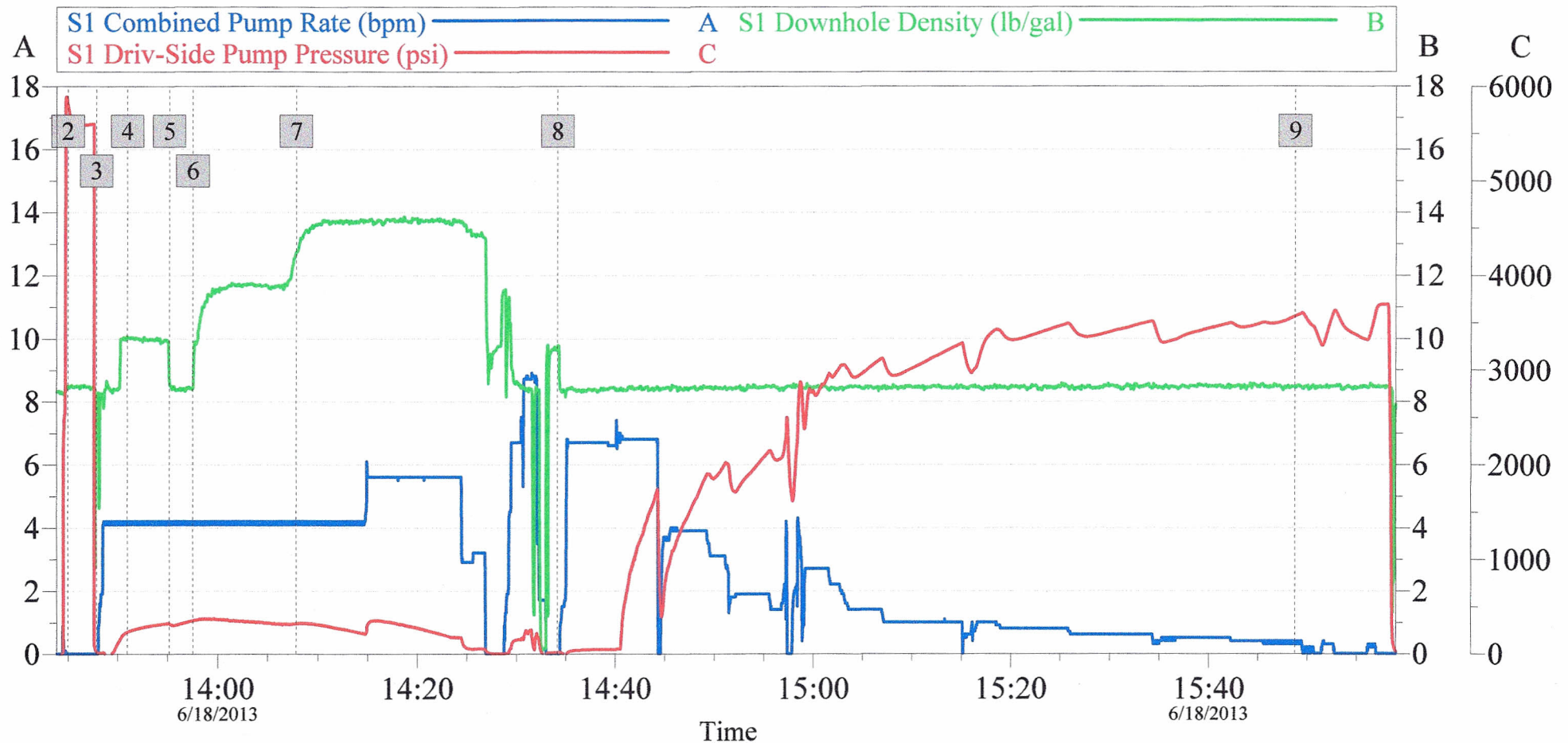
Stage/Plug #: 1	Fluid #	Stage Type	Fluid Name	Qty	Qty uom	Mixing Density lbm/gal	Yield ft ³ /sk	Mix Fluid Gal/sk	Rate bbl/min	Total Mix Fluid Gal/sk
-----------------	---------	------------	------------	-----	---------	------------------------	---------------------------	------------------	--------------	------------------------

HALLIBURTON*210 SKS
To Surface***Cementing Job Summary**

Stage/Plug #: 1									
Fluid #	Stage Type	Fluid Name	Qty	Qty uom	Mixing Density lbm/gal	Yield ft ³ /sk	Mix Fluid Gal/sk	Rate bbl/min	Total Mix Fluid Gal/sk
1	SUPER FLUSH 101	SUPER FLUSH 101 - SBM (12199)	20.00	bbl	10.	.0	.0	.0	
2	Lead Cement	HALCEM (TM) SYSTEM (452986)	100.0	sacks	11.5	2.44	13.72		13.72
	3 lbm	KOL-SEAL, 50 LB BAG (100064232)							
	1 %	BENTONITE, BULK (100003682)							
	0.15 %	SA-1015, 50 LB SACK (102077046)							
	5 lbm	SILICALITE - COMPACTED, 50 LB SK (100012223)							
	5 %	MICROBOND (100003669)							
	13.72 Gal	FRESH WATER							
3	BondCem	BONDCEM (TM) SYSTEM (452977)	340.0	sacks	13.5	1.44	6.79		6.79
	1 lbm	GRANULITE TR 1/4, 50 LB SK (100064073)							
	0.125 lbm	POLY-E-FLAKE (101216940)							
	6.79 Gal	FRESH WATER							
4	Fresh Water		151.00	bbl	8.34	.0	.0	.0	
Calculated Values		Pressures		Volumes					
Displacement		Shut In: Instant		Lost Returns		Cement Slurry		Pad	
Top Of Cement		5 Min		Cement Returns		Actual Displacement		Treatment	
Frac Gradient		15 Min		Spacers		Load and Breakdown		Total Job	
Rates									
Circulating		Mixing		Displacement		Avg. Job			
Cement Left In Pipe	Amount	0 ft	Reason	Shoe Joint					
Frac Ring # 1 @	ID	Frac ring # 2 @	ID	Frac Ring # 3 @	ID	Frac Ring # 4 @	ID		
The Information Stated Herein Is Correct				Customer Representative Signature					

CHEVRON EMERALD 77X TIE BACK

18 JUN 2013



Global Event Log

Intersection	SDPP	Intersection	SDPP	Intersection	SDPP
2 Test Lines	13:44:58 5817	3 Pump Spacer 1	13:47:51 21.93	4 Pump Spacer 2	13:50:58 231.0
5 Pump Spacer 1	13:55:09 320.0	6 Pump Lead Cement	13:57:31 351.9	7 Pump Tail Cement	14:07:49 320.1
8 Pump Displacement	14:34:09 11.00	9 Bump Plug	15:48:46 3565		

Customer:
Well Description:

Job Date: 18-Jun-2013

Sales Order #: 900518170
ELITE

OptiCem v6.4.10
18-Jun-13 16:18