

**HALLIBURTON**

S92 @ 766'

down 7" up 9 7/8  
to surface**Cementing Job Log***The Road to Excellence Starts with Safety*

Sold To #: 338668		Ship To #: 2999933		Quote #:		Sales Order #: 900507774	
Customer: CHEVRON - MID-CONTINENT EBIZ				Customer Rep:			
Well Name: Emerald			Well #: 77X			API/UWI #:	
Field:		City (SAP): RANGELY		County/Parish: Rio Blanco		State: Colorado	
Legal Description:							
Lat: N 0 deg. OR N 0 deg. 0 min. 0 secs.				Long: E 0 deg. OR E 0 deg. 0 min. 0 secs.			
Contractor: WORKOVER			Rig/Platform Name/Num: Workover				
Job Purpose: Cement Surface Casing						Ticket Amount:	
Well Type: Producing Well			Job Type: Cement Surface Casing				
Sales Person: METLI, MARSHALL			Srvc Supervisor: MUIR, BRYCE			MBU ID Emp #: 451998	

Activity Description	Date/Time	Cht #	Rate USgal/min	Volume bbl		Pressure psig		Comments
				Stage	Total	Tubing	Casing	
Call Out	06/11/2013 07:00							
Safety Meeting - Departing Location	06/11/2013 09:15							Discuss Hazards Associated with Traveling To Location
Crew Leave Yard	06/11/2013 09:30							Depart Service Center
Arrive at Location from Service Center	06/11/2013 10:45							
Safety Meeting - Assessment of Location	06/11/2013 10:55							Discuss Hazards Associated with Spotting Equipment On A Well Location
Safety Meeting - Pre Job	06/11/2013 11:00							Discuss With Rig Crew HES Job and Safety Procedures
Other	06/11/2013 12:40							Spot Equipment
Rig-Up Equipment	06/11/2013 13:00							Rig Up Equipment
Safety Meeting - Pre Job	06/11/2013 14:05							Discuss With Rig Crew HES Job and Safety Procedures while Pumping The Job
Start Job	06/11/2013 14:30							
Pump Water	06/11/2013 14:32		2.02	2			20.0	Pump 2 bbls of Fresh Water Spacer to Fill Pumping Lines
Pressure Test	06/11/2013 14:35						1730.0	Pressure Test Lines to 1500 Psi
Pump Spacer	06/11/2013 14:38		2.98	5	7		20.0	Pump 5 bbls of Fresh Waster Spacer

Sold To #: 338668

Ship To #: 2999933

Quote #:

Sales Order #: 900507774

SUMMIT Version: 7.3.0081

Tuesday, June 11, 2013 04:02:00

## Cementing Job Log

Activity Description	Date/Time	Cht #	Rate USg al/mi n	Volume bbl		Pressure psig		Comments
				Stage	Total	Tubing	Casing	
Pump Cement	06/11/2013 14:42		2.98	30	37		85.0	Pump 30 Bbls of Cement (150 Sks 15.8 lb/gal 1.15 cuft/sk 4.97 gal/sk)
Pump Displacement	06/11/2013 14:51		2.98	30	67		375.0	Pump 30 Bbls of Fresh Water Displacement
Shutdown	06/11/2013 15:00							Shutdown and wait for Rig Crew to Shut in the Well Before Bleeding Off Pressure. Final Pumping Pressure was 375 Psi
End Job	06/11/2013 15:01							Bleed Pressure back Back to The Pump Truck
Safety Meeting - Pre Rig-Down	06/11/2013 15:10							Discuss Hazards Associated With Rigging Down and Packing Iron
Rig-Down Equipment	06/11/2013 15:20							Rig Down Equipment
Safety Meeting - Pre Rig-Up	06/11/2013 15:41							Discuss Hazards Associated with Rigging Up and Packing Iron
Safety Meeting - Departing Location	06/11/2013 16:15							Discuss Hazards Associated with Traveling Back To the Service Center
Crew Leave Location	06/11/2013 16:30							Thank You For Using Halliburton Energy Services. Stay Safe



The Road to Excellence Starts with Safety

Sold To #: 338668		Ship To #: 2999933		Quote #:		Sales Order #: 900507774	
Customer: CHEVRON - MID-CONTINENT EBIZ				Customer Rep:			
Well Name: Emerald			Well #: 77X		API/UWI #:		
Field:		City (SAP): RANGELY		County/Parish: Rio Blanco		State: Colorado	
Contractor: WORKOVER			Rig/Platform Name/Num: Workover				
Job Purpose: Cement Surface Casing							
Well Type: Producing Well			Job Type: Cement Surface Casing				
Sales Person: METLI, MARSHALL			Srv Supervisor: MUIR, BRYCE			MBU ID Emp #: 451998	

## Job Personnel

HES Emp Name	Exp Hrs	Emp #	HES Emp Name	Exp Hrs	Emp #	HES Emp Name	Exp Hrs	Emp #
CARPENTER, LANCE S	5.8	461737	LAWTON, SCOTT C	5.8	482816	MUIR, BRYCE George	5.8	451998
TONGI, SIONE Motumanu	5.8	528555						

## Equipment

HES Unit #	Distance-1 way	HES Unit #	Distance-1 way	HES Unit #	Distance-1 way	HES Unit #	Distance-1 way
10261036	60 mile	10872435	60 mile	10982756	60 mile	11259880	60 mile
11263212	60 mile	11338211	60 mile				

## Job Hours

Date	On Location Hours	Operating Hours	Date	On Location Hours	Operating Hours	Date	On Location Hours	Operating Hours
06-11-13	5.8	1						
TOTAL			Total is the sum of each column separately					

## Job

## Job Times

Formation Name					Date	Time	Time Zone
Formation Depth (MD)	Top		Bottom		Called Out	11 - Jun - 2013	07:00 MST
Form Type	BHST				On Location	11 - Jun - 2013	10:45 MST
Job depth MD	766. ft				Job Started	11 - Jun - 2013	14:30 MST
Water Depth	Wk Ht Above Floor . ft				Job Completed	11 - Jun - 2013	15:00 MST
Perforation Depth (MD)	From		To		Departed Loc	11 - Jun - 2013	16:30 MST

## Well Data

Description	New / Used	Max pressure psig	Size in	ID in	Weight lbm/ft	Thread	Grade	Top MD ft	Bottom MD ft	Top TVD ft	Bottom TVD ft
7" Casing	Unknown		7.	6.538	17.			.	20.		
9 5/8" Casing	Unknown		9.625	8.921	36.			.	20.		

## Tools and Accessories

Type	Size	Qty	Make	Depth	Type	Size	Qty	Make	Depth	Type	Size	Qty	Make
Guide Shoe					Packer					Top Plug			
Float Shoe					Bridge Plug					Bottom Plug			
Float Collar					Retainer					SSR plug set			
Insert Float										Plug Container			
Stage Tool										Centralizers			

## Miscellaneous Materials

Gelling Agt		Conc		Surfactant		Conc		Acid Type		Qty		Conc	%
Treatment Fld		Conc		Inhibitor		Conc		Sand Type		Size		Qty	

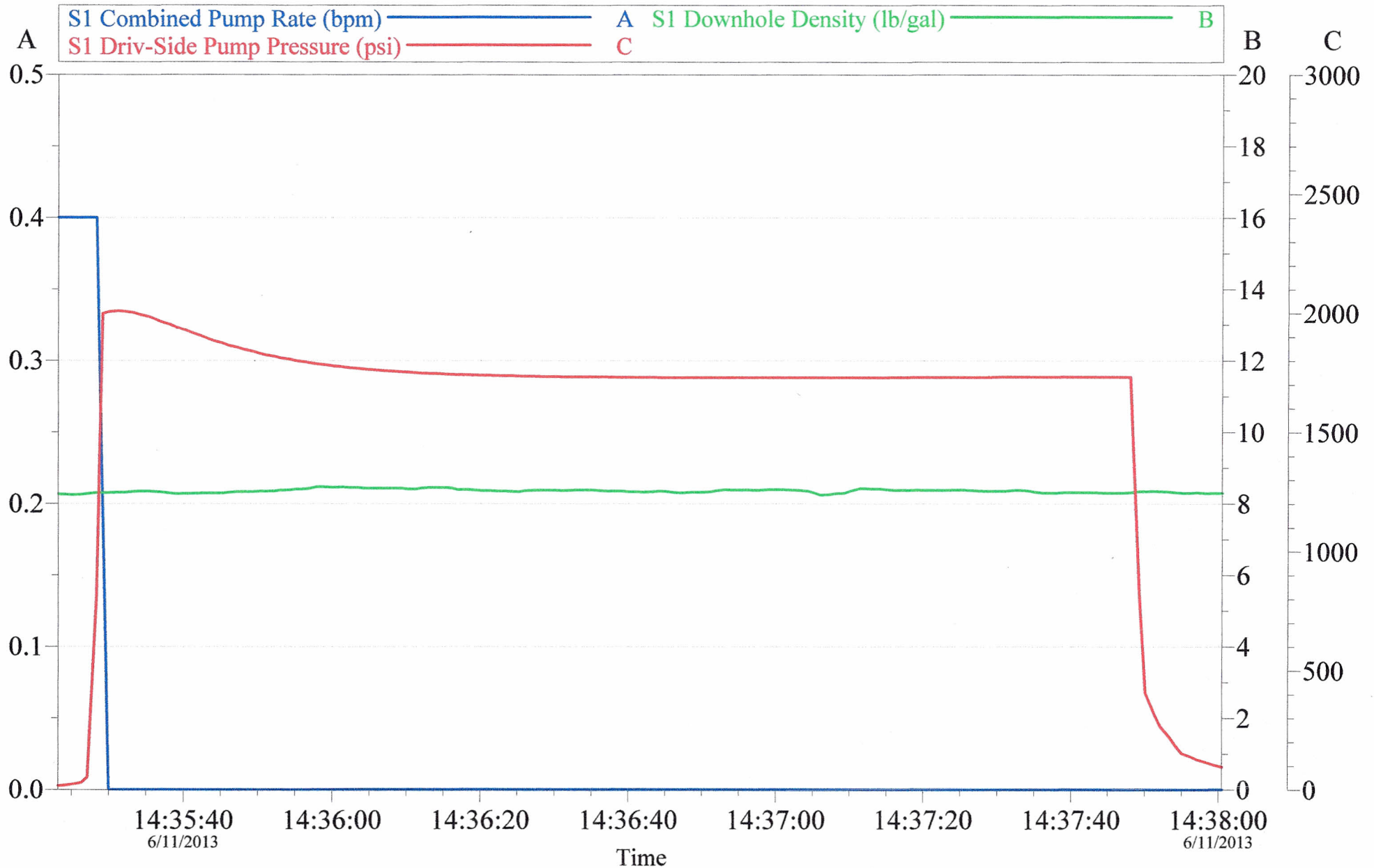
## Fluid Data

Stage/Plug #: 1													
Fluid #	Stage Type	Fluid Name			Qty	Qty uom	Mixing Density lbm/gal	Yield ft <sup>3</sup> /sk	Mix Fluid Gal/sk	Rate USgal/min	Total Mix Fluid Gal/sk		



Stage/Plug #: 1									
Fluid #	Stage Type	Fluid Name	Qty	Qty uom	Mixing Density lbm/gal	Yield ft <sup>3</sup> /sk	Mix Fluid Gal/sk	Rate USgal/min	Total Mix Fluid Gal/sk
1	Water Spacer		20.00	bbl	8.34	.0	.0	4.0	
2	HalCem	HALCEM (TM) SYSTEM (452986)	150.0	sacks	14.8	1.35	6.37	2.0	6.37
		6.365 Gal	FRESH WATER						
Calculated Values		Pressures		Volumes					
Displacement	30	Shut In: Instant		Lost Returns	0	Cement Slurry		Pad	
Top Of Cement		5 Min		Cement Returns	8	Actual Displacement	30	Treatment	
Frac Gradient		15 Min		Spacers	5	Load and Breakdown		Total Job	
Rates									
Circulating	3	Mixing	3	Displacement	3	Avg. Job	3		
Cement Left In Pipe	Amount	0 ft	Reason	Shoe Joint					
Frac Ring # 1 @	ID	Frac ring # 2 @	ID	Frac Ring # 3 @	ID	Frac Ring # 4 @	ID		
The Information Stated Herein Is Correct				Customer Representative Signature					

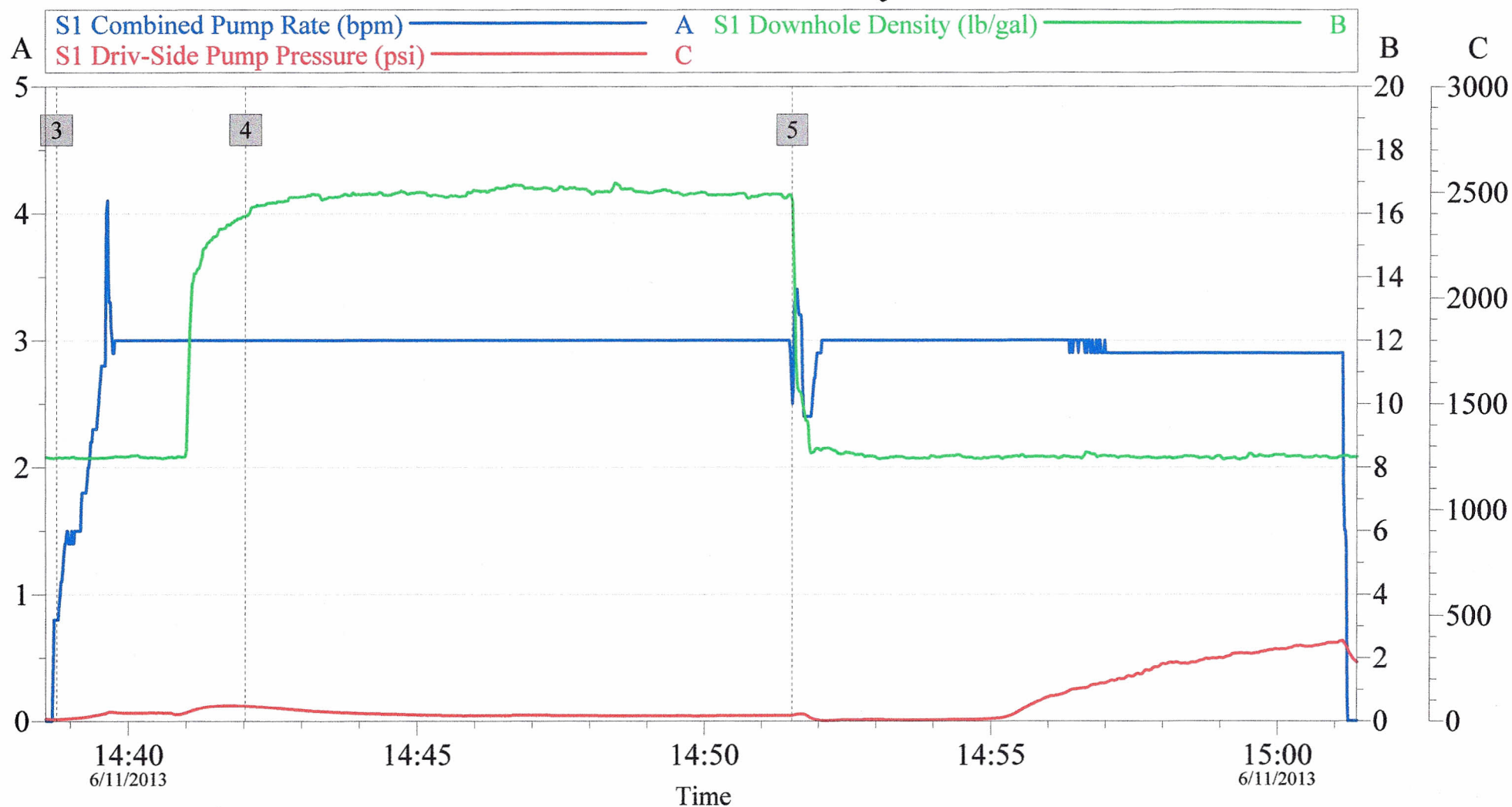
# Chevron Top Out Emerald 77X Pressure Test Chart



Customer: Chevron	Job Date: 11-Jun-2013	Sales Order #: 900507774
Well Description: Emerald 77X	UWI:	Elite # 10872435
Service Operator Scott Lawton	Service Supervisor Bryce Muir	Service Leader Sam Carpenter

OptiCem v6.4.10  
11-Jun-13 15:07

# Chevron Top Out Emerald 77X Job Summary Chart



## Global Event Log

Intersection		Psi	Intersection		Psi	Intersection		Psi
3	Pump Spacer 1	14:38:46 9.000	4	Pump Cement	14:42:02 72.00	5	Pump Displacement	14:51:32 27.00

Customer: Chevron  
Well Description: Emerald 77X  
Service Operator: Scott Lawton

Job Date: 11-Jun-2013  
UWI:  
Service Supervisor: Bryce Muir

Sales Order #: 900507774  
Elite #: 10872435  
Service Leader: Sam Carpenter

OptiCem v6.4.10  
11-Jun-13 15:12