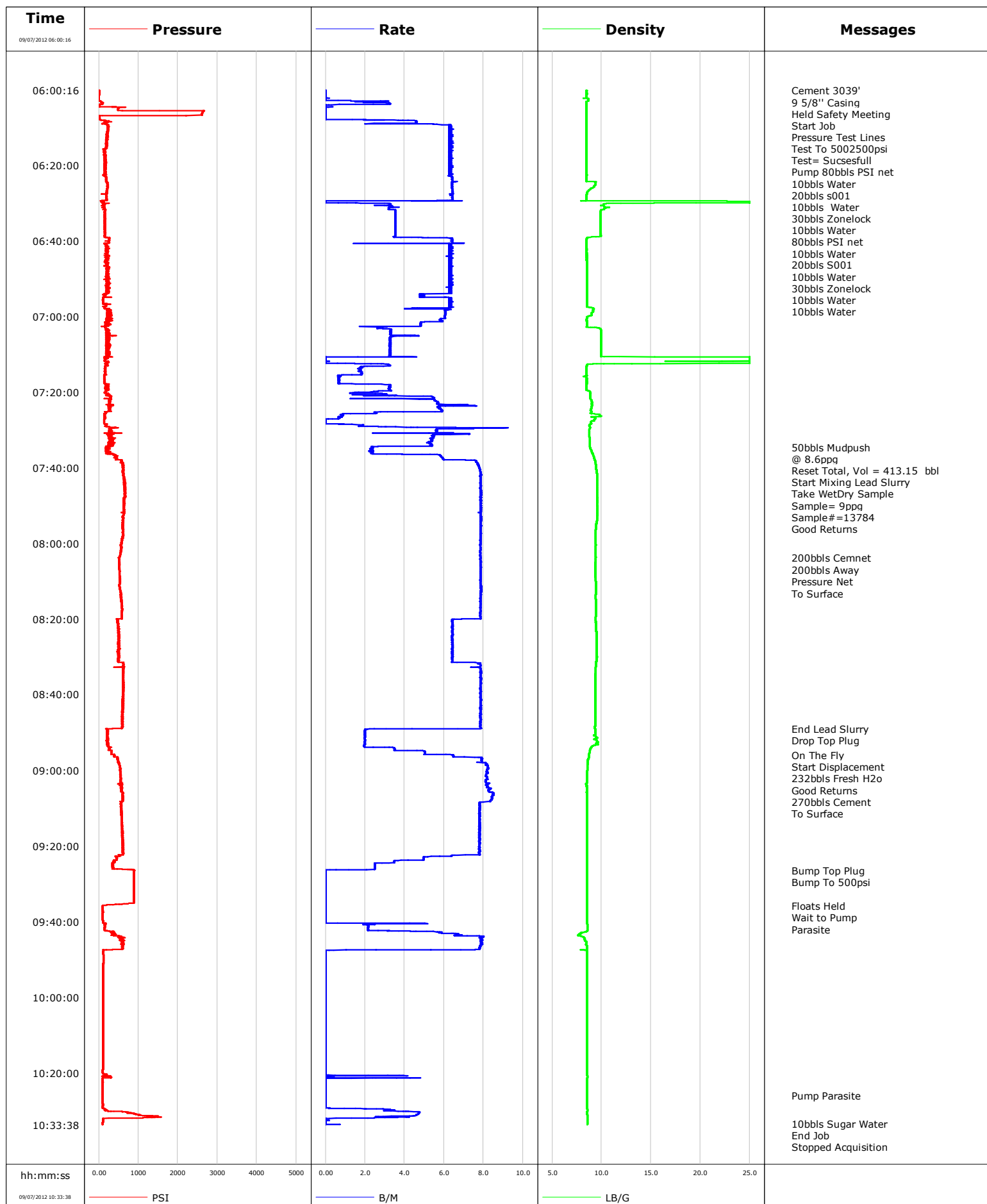


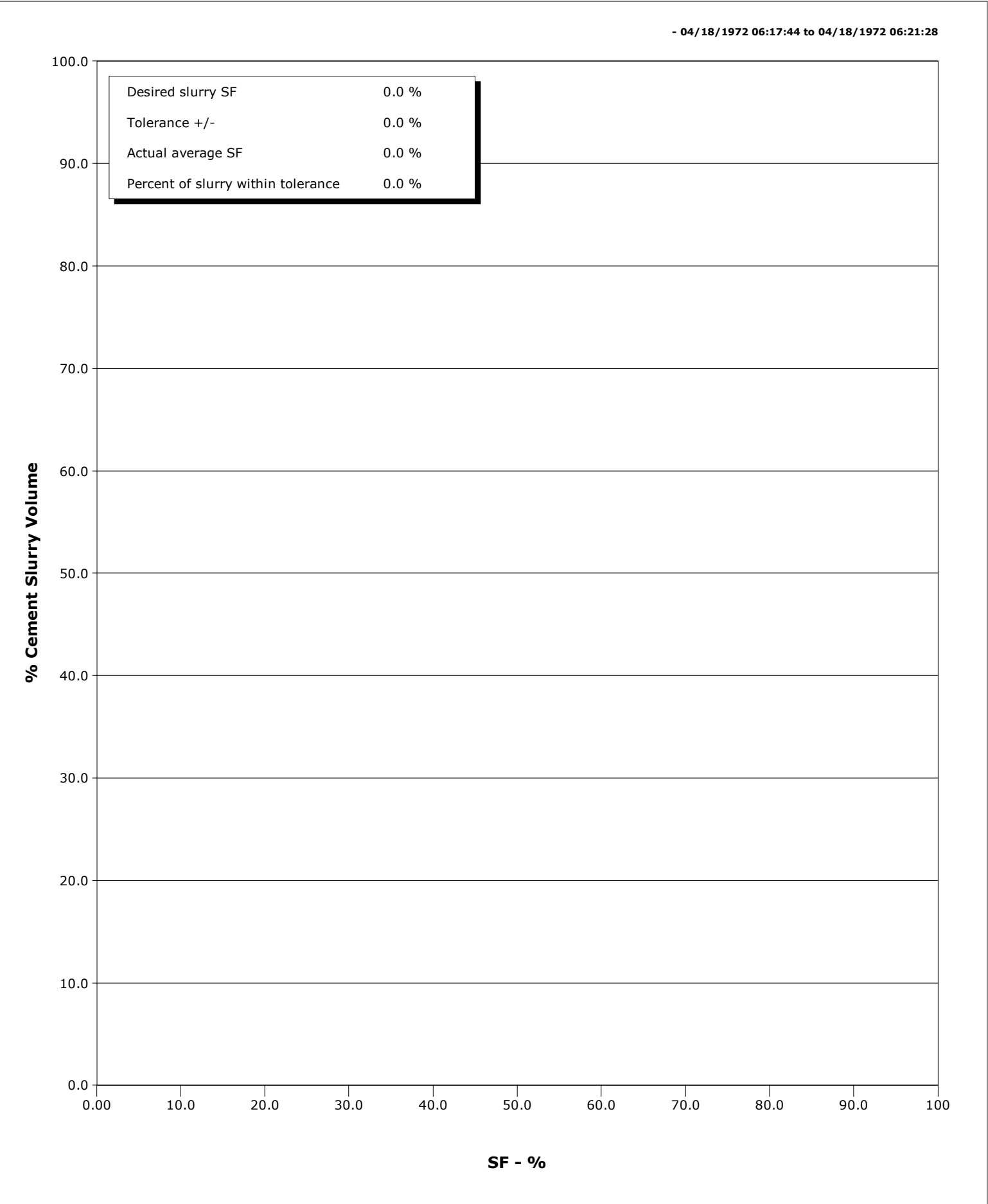
Well	SG 8502 A-35	Client	ENCANA
Field	STORY GULCH	SIR No.	C610-00561
Engineer		Job Type	SURFACE
Country	United States	Job Date	09-07-2012



Schlumberger

Cementing Qa/Qc SFM Report

Well	SG 8502 A-35	Client	ENCANA
Field	STORY GULCH	SIR No.	C610-00561
Engineer		Job Type	SURFACE
Country	United States	Job Date	09-07-2012





Cementing Service Report

				Customer ENCANA			Job Number C610-00561								
Well SG 8502 A-35				Location (legal) N PARACHUTE			Schlumberger Location GCO			Job Start Sep/07/2012					
Field STORY GULCH			Formation Name/Type			Deviation		Bit Size		Well MD		Well TVD			
County GARFILED			State/Province Colorado			BHP		BHST		BHCT		Pore Press. Gradient			
Well Master			API/UWI												
Rig Name PATTERSON 306		Drilled For Gas		Service Via Land		Casing/Liner									
Offshore Zone		Well Class New		Well Type Development		Depth, ft		Size, in		Weight, lb/ft		Grade		Thread	
						3039.0		9.630		36.0		K55		8RD	
Drilling Fluid Type		Max. Density		Plastic Viscosity		Tubing/Drill Pipe									
						Depth,		Size,		Weight,		Grade		Thread	
Service Line Cementing		Job Type SURFACE													
Max. Allowed Tub. Press		Max. Allowed Ann. Press		WH Connection		Perforations/Open Hole									
						Top,		Bottom,				No. of Shots		Total Interval	
Service Instructions 50bbbls MP @ 8.6ppg 1136 sks 9ppg liteCRETE 2.8ft3/sk WATER TEST= GOOD														Diameter	
						Treat Down Casing		Displacement 232.0 bbl		Packer Type		Packer Depth			
						Tubing Vol.		Casing Vol. 235.0 bbl		Annular Vol. 386.0 bbl		Openhole Vol. 638.0 bbl			
Casing/Tubing Secured <input checked="" type="checkbox"/>		1 Hole Vol. Circulated prior to Cement <input checked="" type="checkbox"/>		Casing Tools				Squeeze Job							
Lift Pressure 1504 psi				Shoe Type Guide				Squeeze Type							
Pipe Rotated <input type="checkbox"/>		Pipe Reciprocated <input type="checkbox"/>		Shoe Depth 3039.0 ft				Tool Type							
No. Centralizers		Top Plugs 1		Bottom Plugs		Stage Tool Type				Tool Depth					
Cement Head Type Single				Stage Tool Depth				Tail Pipe Size							
Job Scheduled For Sep/07/2012		Arrived on Location Sep/07/2012		Leave Location Sep/07/2012		Collar Type Diff-Fill				Tail Pipe Depth					
						Collar Depth 2994.0 ft				Sqz. Total Vol.					
Date	Time 24-hr clock	Treating Pressure PSI	Flow Rate B/M	Density LB/G	Volume BBL	Message									
09/07/2012	05:39:05					Started Acquisition									
09/07/2012	06:00:16					Cement 3039'									
09/07/2012	06:00:16					9 5/8" Casing									
09/07/2012	06:00:16	3	0.0	8.48	0.0										
09/07/2012	06:00:17					Held Safety Meeting									
09/07/2012	06:00:17	3	0.0	8.48	0.0										
09/07/2012	06:00:18					Start Job									
09/07/2012	06:00:18	3	0.0	8.48	0.0										
09/07/2012	06:00:25					Pressure Test Lines									
09/07/2012	06:00:25	2	0.0	8.48	0.0										
09/07/2012	06:00:26					Test To 5002500psi									
09/07/2012	06:00:26					Test= Succesfull									
09/07/2012	06:00:26	2	0.0	8.48	0.0										
09/07/2012	06:01:05	3	0.0	8.48	0.0										
09/07/2012	06:03:05	3	1.3	8.65	0.0										
09/07/2012	06:05:05	492	0.0	8.48	2.7										
09/07/2012	06:07:05	7	0.0	8.48	2.7										
09/07/2012	06:09:05	169	2.5	8.48	7.0										
09/07/2012	06:11:05	223	6.2	8.48	19.1										
09/07/2012	06:13:05					Pump 80bbbls PSI net									
09/07/2012	06:13:05					10bbbls Water									

Well			Field		Job Start	Customer	Job Number
SG 8502 A-35			STORY GULCH		Sep/07/2012	ENCANA	C610-00561
Date	Time 24-hr clock	Treating Pressure PSI	Flow Rate B/M	Density LB/G	Volume BBL	Message	
09/07/2012	06:13:25					20bbls s001	
09/07/2012	06:13:25					10bbls Water	
09/07/2012	06:13:25					30bbls Zonelock	
09/07/2012	06:13:25					10bbls Water	
09/07/2012	06:13:25					80bbls PSI net	
09/07/2012	06:13:25					10bbls Water	
09/07/2012	06:13:25					20bbls S001	
09/07/2012	06:13:25	200	6.2	8.48	33.8		
09/07/2012	06:13:26					10bbls Water	
09/07/2012	06:13:26	193	6.4	8.48	33.9		
09/07/2012	06:15:05	201	6.4	8.48	44.3		
09/07/2012	06:15:40					30bbls Zonelock	
09/07/2012	06:15:40					10bbls Water	
09/07/2012	06:15:40	187	6.2	8.47	48.0		
09/07/2012	06:16:01					10bbls Water	
09/07/2012	06:16:01	124	6.2	8.47	50.2		
09/07/2012	06:17:05	128	6.4	8.48	56.9		
09/07/2012	06:19:05	155	6.4	8.47	69.5		
09/07/2012	06:21:05	136	6.2	8.47	82.1		
09/07/2012	06:23:05	177	6.4	8.46	94.7		
09/07/2012	06:25:05	214	6.4	9.38	107.5		
09/07/2012	06:27:05	207	6.4	8.58	120.3		
09/07/2012	06:29:05	193	6.4	8.47	133.1		
09/07/2012	06:31:05	142	3.2	10.25	139.2		
09/07/2012	06:33:05	145	3.5	9.90	146.1		
09/07/2012	06:35:05	146	3.5	9.90	153.1		
09/07/2012	06:37:05	150	3.5	9.90	160.2		
09/07/2012	06:39:05	143	3.5	8.89	167.2		
09/07/2012	06:41:05	167	6.2	8.48	179.5		
09/07/2012	06:43:05	238	6.4	8.48	192.1		
09/07/2012	06:45:05	208	6.4	8.48	204.7		
09/07/2012	06:47:05	245	6.4	8.48	217.3		
09/07/2012	06:49:05	190	6.2	8.48	229.9		
09/07/2012	06:51:05	208	6.2	8.48	242.5		
09/07/2012	06:53:05	212	6.4	8.48	255.1		
09/07/2012	06:55:05	115	6.2	8.48	266.4		
09/07/2012	06:57:05	178	6.4	8.49	279.0		
09/07/2012	06:59:05	199	6.0	9.01	290.9		
09/07/2012	07:01:05	193	5.8	8.48	302.9		
09/07/2012	07:03:05	166	2.7	9.63	312.1		
09/07/2012	07:05:05	256	4.5	9.91	318.6		
09/07/2012	07:07:05	185	3.3	9.91	325.4		
09/07/2012	07:09:05	250	3.2	9.91	332.0		
09/07/2012	07:11:05	154	0.0	25.00	337.5		
09/07/2012	07:13:05	211	3.3	8.49	339.3		
09/07/2012	07:15:05	152	1.8	8.48	343.0		
09/07/2012	07:17:05	132	0.7	8.48	344.9		
09/07/2012	07:19:05	229	3.3	8.48	349.2		
09/07/2012	07:21:05	251	3.5	8.85	354.8		
09/07/2012	07:23:05	279	5.7	9.02	365.5		
09/07/2012	07:25:05	320	5.9	8.93	377.5		
09/07/2012	07:27:05	154	0.7	9.35	380.8		
09/07/2012	07:29:05	164	1.7	8.76	381.9		
09/07/2012	07:31:05	342	7.3	8.76	393.2		

Well			Field		Job Start	Customer		Job Number
SG 8502 A-35			STORY GULCH		Sep/07/2012	ENCANA		C610-00561
Date	Time 24-hr clock	Treating Pressure PSI	Flow Rate B/M	Density LB/G	Volume BBL	Message		
09/07/2012	07:34:33					50bbls Mudpush		
09/07/2012	07:34:33	234	2.3	8.81	411.7			
09/07/2012	07:34:34					@ 8.6ppg		
09/07/2012	07:34:34	283	2.4	8.81	411.7			
09/07/2012	07:35:05	170	2.3	8.88	412.9			
09/07/2012	07:35:11					Reset Total, Vol = 413.15 bbl		
09/07/2012	07:35:11	238	2.4	8.90	413.1			
09/07/2012	07:37:05	436	5.8	9.18	419.8			
09/07/2012	07:39:05	601	7.7	9.41	433.5			
09/07/2012	07:40:10					Start Mixing Lead Slurry		
09/07/2012	07:40:10	613	7.8	9.45	441.9			
09/07/2012	07:40:11					Take WetDry Sample		
09/07/2012	07:40:11					Sample= 9ppg		
09/07/2012	07:40:11					Sample#=13784		
09/07/2012	07:40:11					Good Returns		
09/07/2012	07:40:11	625	7.8	9.45	442.0			
09/07/2012	07:41:05	609	7.8	9.49	449.1			
09/07/2012	07:43:05	633	7.8	9.54	464.8			
09/07/2012	07:45:05	662	7.9	9.53	480.5			
09/07/2012	07:47:05	655	7.9	9.55	496.2			
09/07/2012	07:49:05	625	7.8	9.56	511.9			
09/07/2012	07:51:05	630	7.9	9.57	527.6			
09/07/2012	07:53:05	609	7.9	9.54	543.3			
09/07/2012	07:55:05	603	7.8	9.45	559.0			
09/07/2012	07:57:05	609	7.8	9.41	574.7			
09/07/2012	07:59:05	583	7.8	9.39	590.4			
09/07/2012	08:01:05	565	7.8	9.40	606.1			
09/07/2012	08:03:05	535	7.8	9.40	621.7			
09/07/2012	08:03:45					200bbls Cemnet		
09/07/2012	08:03:45	508	7.8	9.41	626.9			
09/07/2012	08:05:05	516	7.9	9.36	637.4			
09/07/2012	08:07:05					200bbls Away		
09/07/2012	08:07:05					Pressure Net		
09/07/2012	08:07:05	524	7.9	9.32	653.1			
09/07/2012	08:07:22					To Surface		
09/07/2012	08:07:22	516	7.8	9.32	655.3			
09/07/2012	08:09:05	534	7.8	9.37	668.8			
09/07/2012	08:11:05	510	7.8	9.42	684.5			
09/07/2012	08:13:05	556	7.9	9.42	700.2			
09/07/2012	08:15:05	564	7.8	9.41	715.9			
09/07/2012	08:17:05	576	7.8	9.44	731.6			
09/07/2012	08:19:05	583	7.8	9.42	747.3			
09/07/2012	08:21:05	488	6.4	9.41	761.4			
09/07/2012	08:23:05	506	6.4	9.46	774.3			
09/07/2012	08:25:05	527	6.4	9.48	787.1			
09/07/2012	08:27:05	507	6.4	9.49	799.9			
09/07/2012	08:29:05	505	6.4	9.50	812.7			
09/07/2012	08:31:05	498	6.4	9.47	825.6			
09/07/2012	08:33:05	625	7.8	9.40	840.6			
09/07/2012	08:35:05	620	7.9	9.36	856.2			
09/07/2012	08:37:05	613	7.8	9.35	871.9			
09/07/2012	08:39:05	608	7.8	9.34	887.6			
09/07/2012	08:41:05	615	7.8	9.32	903.3			
09/07/2012	08:43:05	619	7.8	9.32	919.0			

Well			Field		Job Start	Customer	Job Number
SG 8502 A-35			STORY GULCH		Sep/07/2012	ENCANA	C610-00561
Date	Time 24-hr clock	Treating Pressure PSI	Flow Rate B/M	Density LB/G	Volume BBL	Message	
09/07/2012	08:47:05	595	7.8	9.33	950.4		
09/07/2012	08:49:05	200	2.5	9.32	965.7		
09/07/2012	08:49:06					End Lead Slurry	
09/07/2012	08:49:06	218	2.2	9.33	965.8		
09/07/2012	08:49:09					Drop Top Plug	
09/07/2012	08:49:09	219	2.0	9.33	965.9		
09/07/2012	08:51:05	217	2.0	9.42	969.7		
09/07/2012	08:53:05	216	2.0	9.51	973.7		
09/07/2012	08:55:05	317	5.0	8.80	979.9		
09/07/2012	08:56:01					On The Fly	
09/07/2012	08:56:01	390	6.5	8.69	984.8		
09/07/2012	08:56:13					Start Displacement	
09/07/2012	08:56:13	382	6.5	8.69	986.1		
09/07/2012	08:56:15					232bbls Fresh H2o	
09/07/2012	08:56:15					Good Returns	
09/07/2012	08:56:15	374	6.5	8.69	986.3		
09/07/2012	08:56:45					270bbls Cement	
09/07/2012	08:56:45	478	7.9	8.68	989.9		
09/07/2012	08:56:49					To Surface	
09/07/2012	08:56:49	471	7.9	8.68	990.4		
09/07/2012	08:57:05	476	7.9	8.64	992.5		
09/07/2012	08:59:05	531	8.2	8.55	1008.6		
09/07/2012	09:01:05	557	8.1	8.52	1024.9		
09/07/2012	09:03:05	553	8.1	8.51	1041.2		
09/07/2012	09:05:05	563	8.3	8.50	1057.6		
09/07/2012	09:07:05	596	8.4	8.50	1074.4		
09/07/2012	09:09:05	548	7.8	8.50	1090.7		
09/07/2012	09:11:05	575	7.8	8.50	1106.3		
09/07/2012	09:13:05	573	7.8	8.50	1121.9		
09/07/2012	09:15:05	580	7.8	8.50	1137.5		
09/07/2012	09:17:05	589	7.8	8.50	1153.1		
09/07/2012	09:19:05	599	7.8	8.50	1168.6		
09/07/2012	09:21:05	603	7.8	8.50	1184.2		
09/07/2012	09:23:05	439	5.0	8.50	1198.4		
09/07/2012	09:25:05	345	2.5	8.50	1205.8		
09/07/2012	09:26:28					Bump Top Plug	
09/07/2012	09:26:28	897	0.0	8.50	1208.8		
09/07/2012	09:26:29					Bump To 500psi	
09/07/2012	09:26:29	896	0.0	8.50	1208.8		
09/07/2012	09:27:05	887	0.0	8.50	1208.8		
09/07/2012	09:29:05	883	0.0	8.50	1208.8		
09/07/2012	09:31:05	883	0.0	8.50	1208.8		
09/07/2012	09:33:05	885	0.0	8.50	1208.8		
09/07/2012	09:35:05	885	0.0	8.50	1208.8		
09/07/2012	09:35:46					Floats Held	
09/07/2012	09:35:46	96	0.0	8.50	1208.8		
09/07/2012	09:35:54					Wait to Pump	
09/07/2012	09:35:54	96	0.0	8.50	1208.8		
09/07/2012	09:35:55					Parasite	
09/07/2012	09:35:55	96	0.0	8.50	1208.8		
09/07/2012	09:37:05	97	0.0	8.50	1208.8		
09/07/2012	09:39:05	96	0.0	8.50	1208.8		
09/07/2012	09:41:05	148	2.2	8.54	1210.7		
09/07/2012	09:43:05	399	6.4	7.95	1217.2		

Well			Field		Job Start	Customer		Job Number
SG 8502 A-35			STORY GULCH		Sep/07/2012	ENCANA		C610-00561
Date	Time 24-hr clock	Treating Pressure PSI	Flow Rate B/M	Density LB/G	Volume BBL	Message		
09/07/2012	09:47:05	581	7.8	8.50	1247.9			
09/07/2012	09:49:05	117	0.0	8.50	1250.9			
09/07/2012	09:51:05	112	0.0	8.50	1250.9			
09/07/2012	09:53:05	108	0.0	8.50	1250.9			
09/07/2012	09:55:05	108	0.0	8.50	1250.9			
09/07/2012	09:57:05	108	0.0	8.50	1250.9			
09/07/2012	09:59:05	108	0.0	8.50	1250.9			
09/07/2012	10:01:05	108	0.0	8.50	1250.9			
09/07/2012	10:03:05	108	0.0	8.50	1250.9			
09/07/2012	10:05:05	109	0.0	8.50	1250.9			
09/07/2012	10:07:05	107	0.0	8.50	1250.9			
09/07/2012	10:09:05	108	0.0	8.50	1250.9			
09/07/2012	10:11:05	107	0.0	8.51	1250.9			
09/07/2012	10:13:05	107	0.0	8.50	1250.9			
09/07/2012	10:15:05	107	0.0	8.51	1250.9			
09/07/2012	10:17:05	106	0.0	8.50	1250.9			
09/07/2012	10:19:05	100	0.0	8.51	1250.9			
09/07/2012	10:21:05	307	0.0	8.54	1251.5			
09/07/2012	10:23:05	99	0.0	8.52	1252.0			
09/07/2012	10:25:05	91	0.0	8.52	1252.0			
09/07/2012	10:25:51					Pump Parasite		
09/07/2012	10:25:51	91	0.0	8.52	1252.0			
09/07/2012	10:27:05	91	0.0	8.52	1252.0			
09/07/2012	10:29:05	90	0.0	8.52	1252.0			
09/07/2012	10:31:05	1013	4.6	8.54	1258.9			
09/07/2012	10:33:05	96	0.0	8.54	1262.0			
09/07/2012	10:33:17					10bbls Sugar Water		
09/07/2012	10:33:17	88	0.0	8.54	1262.0			
09/07/2012	10:33:31					End Job		
09/07/2012	10:33:31	88	0.0	8.53	1262.0			
09/07/2012	10:33:38	88	0.0	8.54	1262.0			

Post Job Summary

Average Pump Rates, bbl/min					Volume of Fluid Injected, bbl				
Slurry 6.1	N2	Mud 0.0	Maximum Rate 9.2		Total Slurry 1262.0	Mud 0.0	Spacer 441.8	N2	
Treating Pressure Summary, psi					Breakdown Fluid				
Maximum 2660	Final 88	Average 366	Bump Plug to 900	Breakdown	Type		Volume		Density
Avg. N2 Percent		Designed Slurry Volume 567.0 bbl		Displacement 243.0 bbl	Mix Water Temp 63 degF	Cement Circulated to Surface? <input checked="" type="checkbox"/>		Volume	270.0 bbl
						Washed Thru Perfs <input type="checkbox"/>		To	
Customer or Authorized Representative MIKE QUINTANA				Schlumberger Supervisor JASON CRICK			Circulation Lost <input type="checkbox"/>	Job Completed <input checked="" type="checkbox"/>	
						-		-	