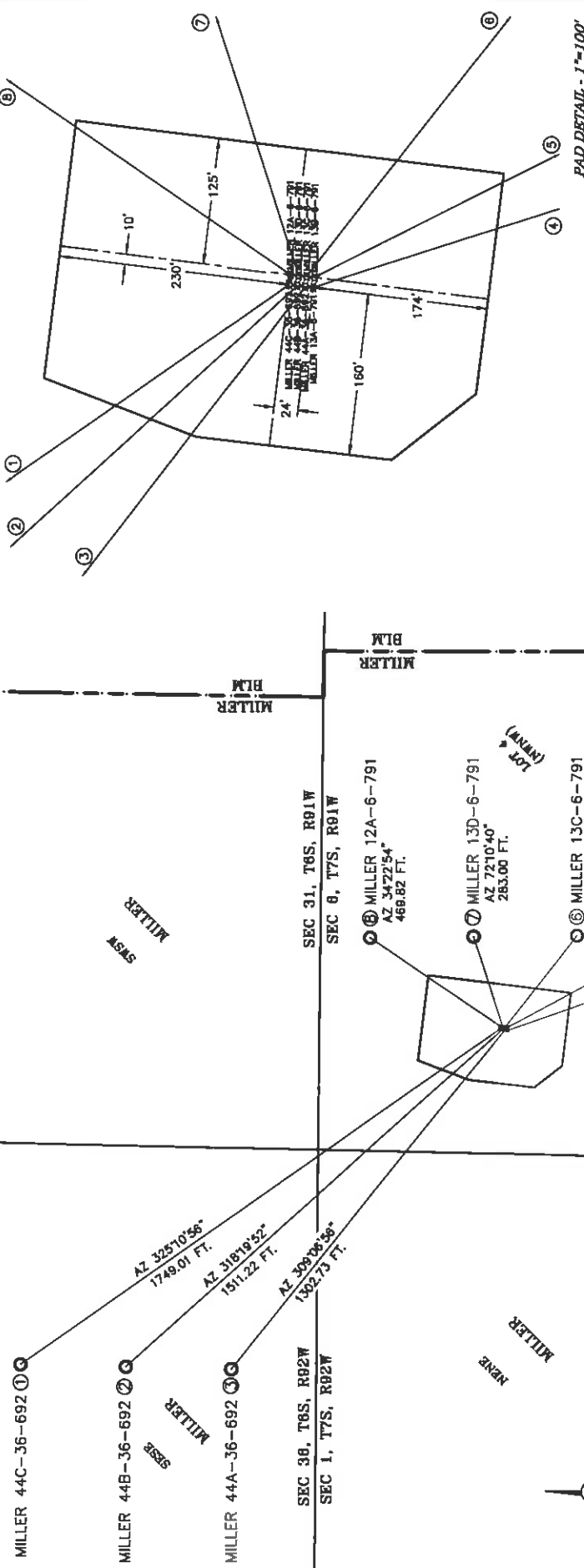


WELL INTERFERENCE EXHIBIT

MILLER PAD 9 NAD 83 COLORADO CENTRAL ZONE SURFACE HOLE LOCATIONS

SURFACE HOLE LOCATIONS				BOTTOM HOLE LOCATIONS			
WELL NAME	FWL	NORTHING	EASTING	FWL	NORTHING	EASTING	LONGITUDE
1 MILLER 44C-36-691	540	371	1604888.7	2405969.1	35.473529	-107.604586	-107.608211
2 MILLER 44B-36-692	540	371	1604890.7	2405968.2	35.473507	-107.604569	-107.608210
3 MILLER 44A-36-693	556	370	1604892.6	2405967.2	35.473505	-107.604572	-107.608219
4 MILLER 13A-6-791	564	369	1604874.9	2405965.2	35.473563	-107.604575	-107.604477
5 MILLER 13B-6-791	565	379	1604873.6	2405976.1	35.473461	-107.604539	-107.605314
6 MILLER 13C-6-791	557	380	1604881.6	2405977.1	35.473504	-107.604537	-107.605350
7 MILLER 13D-6-791	549	381	1604889.5	2405978.1	35.473504	-107.604534	-107.605307
8 MILLER 13A-6-791	541	381	1604877.4	2405979.1	35.473506	-107.604531	-107.605363



PAD DETAIL - 1"=100'

*NOTE: THE FINISHED PAD ELEVATION IS 6090.8'



ECLIPSE
surveying
111 E THIRD ST, SUITE 208 RIFLE, CO 81550
(970) 925-3046

B Bill Barrett Corporation

LOT 4, SECTION 6
T. 7 S., R. 91 W. of the 6th. P.M.
GARFIELD COUNTY, COLORADO

REV. DATE: 5/9/11
SCALE: 1"=500'
DATE: 7/30/10
SHEET: 1 OF 1
PROJECT: MILLER 9
DPT: TAB