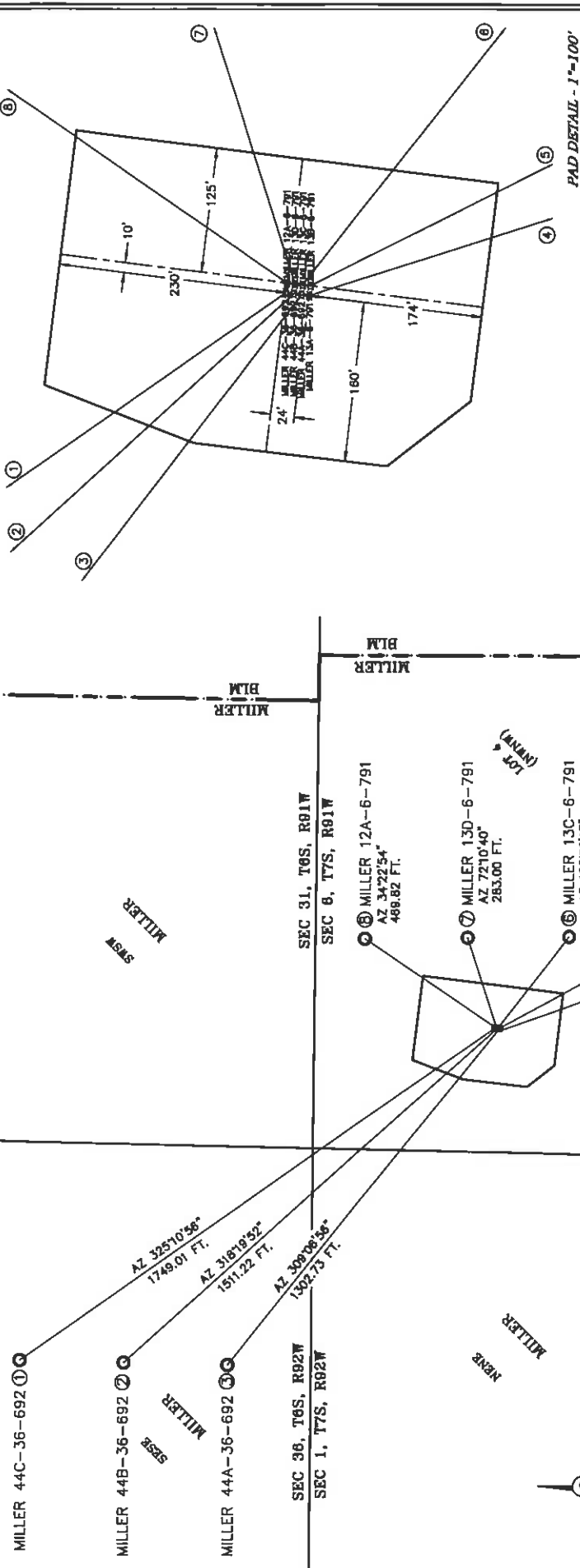


WELL INTERFERENCE EXHIBIT

MILLER PAD 9

NAD 83 COLORADO CENTRAL ZONE
SURFACE HOLE LOCATIONS

SURFACE HOLE LOCATIONS				BOTTOM HOLE LOCATIONS			
WELL NAME	FNL	NORTHING	EASTING	WELL NAME	FNL	NORTHING	EASTING
1 MILLER 44C-36-692	540	1604890.7	2405969.1	685 FSL	559 FSL	1606334.5	2404970.5
2 MILLER 44B-36-692	540	1604890.7	2405969.1	570 FSL	559 FSL	1606334.5	2404970.5
3 MILLER 44A-36-692	555	1604890.7	2405969.1	255 FSL	559 FSL	1606334.5	2404970.5
4 MILLER 13A-6-791	564	1604890.7	2405969.1	678 FSL	559 FSL	1606334.5	2404970.5
5 MILLER 13B-6-791	565	1604890.7	2405969.1	1077 FSL	559 FSL	1606334.5	2404970.5
6 MILLER 13C-6-791	557	1604890.7	2405969.1	708 FSL	559 FSL	1606334.5	2404970.5
7 MILLER 13D-6-791	549	1604890.7	2405969.1	648 FSL	559 FSL	1606334.5	2404970.5
8 MILLER 13E-6-791	541	1604890.7	2405969.1	150 FSL	559 FSL	1606334.5	2404970.5



*NOTE: THE FINISHED PAD ELEVATION IS 8090.6'

ECLIPSE
surveying
1112 THIRD ST, SUITE 208, BOULDER CO 80506
(970) 625-3048

REV. DATE: 5/9/11
SCALE: 1" = 800'
DATE: 7/30/10
SHEET: 1 OF 1
PROJECT: MILLER 9
DPT: TAB

Bill Barrett Corporation
LOT 4, SECTION 6
T. 7 S., R. 91 W. of the 6th. P.M.
GARFIELD COUNTY, COLORADO