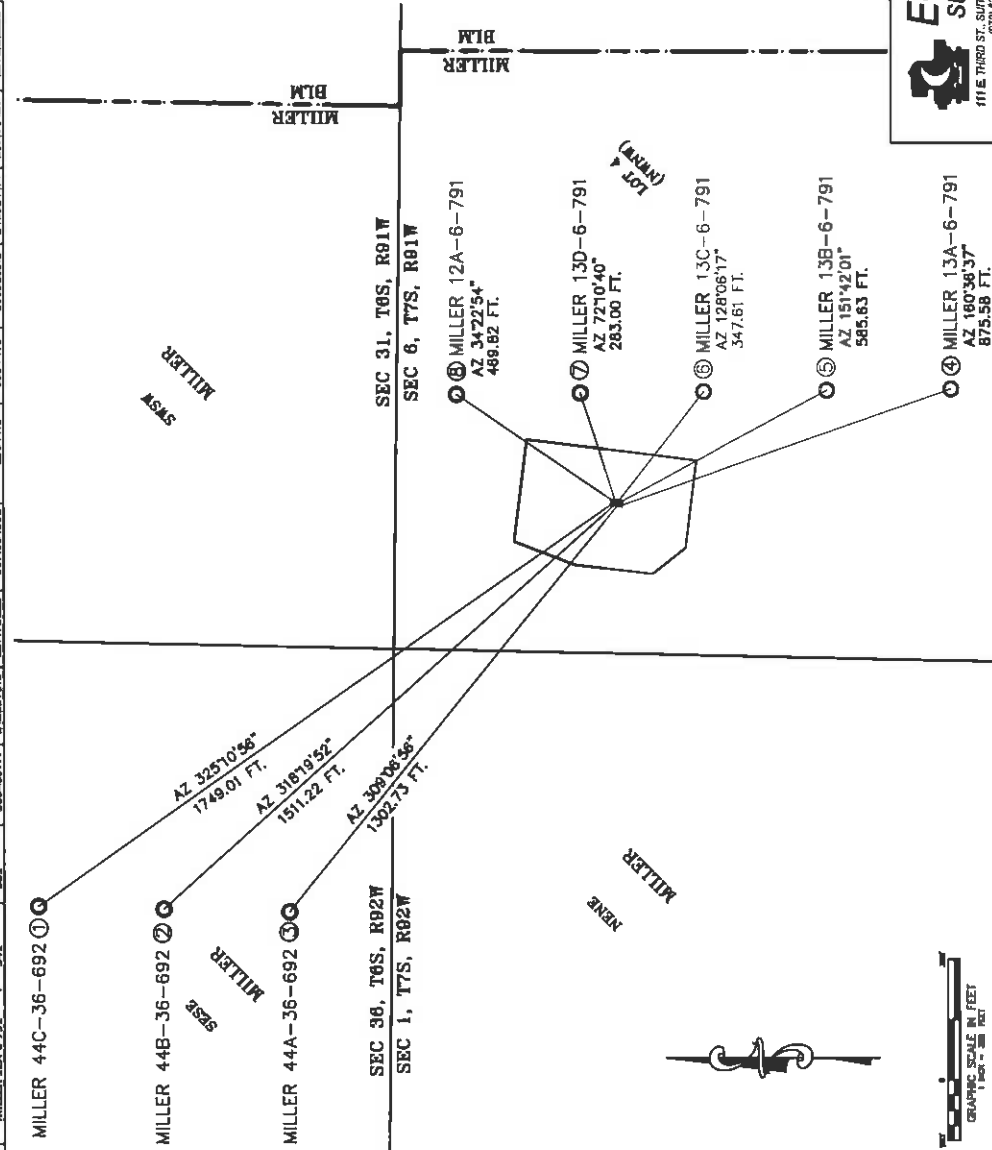
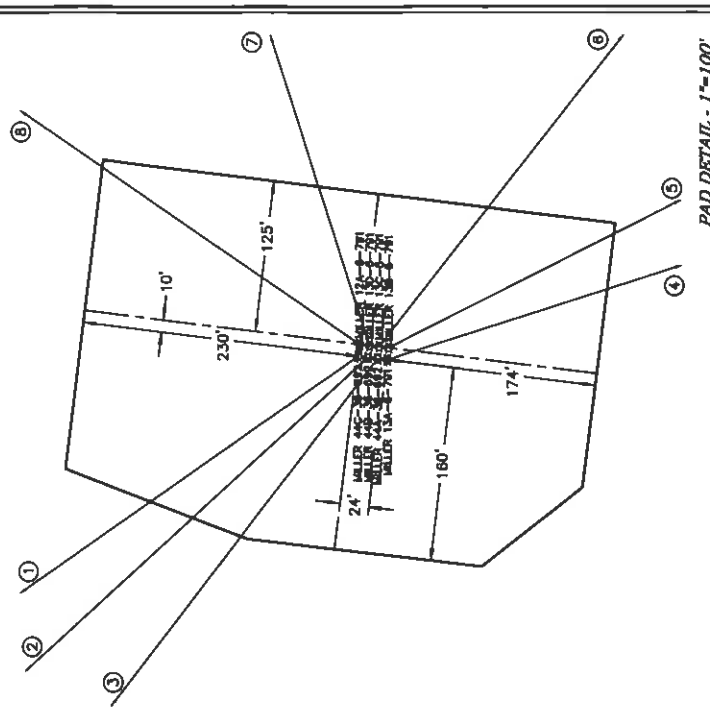


**MILLER PAD 9**  
**NAD 83 COLORADO CENTRAL ZONE**  
**SURFACE HOLE LOCATIONS**

SURFACE HOLE LOCATIONS			BOTTOM HOLE LOCATIONS		
WELL NAME	PHIL	INCH/THICK	EASTING	NORTHING	DEPTH
1	MILLER 44C-36-692	540	1604884.7	2405969.1	371
2	MILLER 44C-36-692	548	1604897.1	2405968.2	373
3	MILLER 44C-36-692	556	1604882.8	2405966.7	372
4	MILLER 13A-6-793	564	1604874.9	2405966.2	373
5	MILLER 13C-6-793	565	1604873.6	2405977.1	373
6	MILLER 13B-6-791	557	1604811.6	2405971.1	373
7	MILLER 12A-6-793	549	1604889.5	2405978.1	373
8	MILLER 12A-6-793	541	1604892.7	2405979.1	373



\*NOTE: THE FINISHED PAD ELEVATION IS 6090.8'

**ECLIPSE**  
surveying  
111 E. THIRD ST., SUITE 208, RIFLE, CO 81650  
(970) 825-3048

**Bill Barrett Corporation**

LOT 4, SECTION 6  
T. 7 S., R. 91 W. of the 6th. P.M.  
GARFIELD COUNTY, COLORADO

REV. DATE:	5/9/11
SCALE:	1" = 300'
DATE:	7/30/10
SHEET:	1 OF 1
PROJECT:	MILLER 9
DEPT:	TAR