

KERR-MCGEE OIL AND GAS ONSHORE LP

**HSR-HANSON 14-1
SE SW 1 2S 65W -- --
ADAMS,COLORADO
07/05/2013**

AREA: S5

ROUTE: S57

Spud: 04/16/1994

WINS No.: 75436

AFE/WO#: 2082062

API#: 0500109218

GL: 5229

KB: 5239

MTD: 7911

TVD: 7455

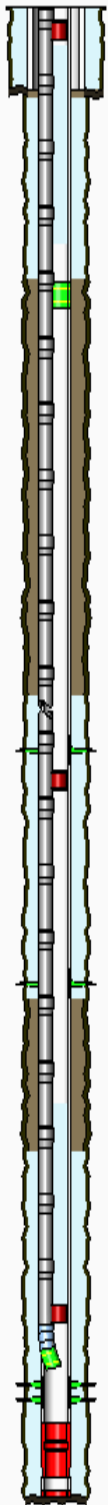
LOG MD:

PBMD: 8060

PBTVD: 8060

Directions:

WATKINS RD AND 120TH, WEST 7/10 MILE, SOUTH ABOUT 1 MILE, ROAD CURVE BACK NORTH INTO LOCATION.



<u>HOLE SECTIONS</u>	<u>Size</u>	<u>Top</u>	<u>Btm</u>	<u>TD Date</u>				
SURFACE	12.25	10	454	04/16/1994				
PRODUCTION	7.88	454	8140	04/22/1994				
<u>TUBULARS</u>	<u>Tool Type</u>	<u>Joints</u>	<u>Size</u>	<u>Weight</u>	<u>Grade</u>	<u>Thread</u>	<u>Top D</u>	<u>Bottom D</u>
SURFACE CASING	Casing	10	8.63	24.00			10	439
PRODUCTION CASING	Casing	40	4.50	11.6	I-70	LTC	10	1713
	Cement Stage Too	1	4.50				1713	1715
	Casing	149	4.50	11.6	I-70	LTC	1715	8075
	Casing Float Collar	1	4.50				8075	8076
	Casing	1	4.50	11.6	I-70	LTC	8076	8114
	Casing Guide Shoe	1	4.50				8114	8115
PRODUCTION TUBING	Tubing	254	2.38	4.7	J-55	8RD EUE	10	7943
	Seating Nipple	1	2.38				7943	7944
	Notched Collar	1	2.38				7944	7945
BRIDGE PLUG	Wellbore Equipment						7930	7932
CICR	Wellbore Equipment						4650	4652
BRIDGE PLUG	Wellbore Equipment						100	102
<u>CEMENT JOBS</u>	<u>Stage</u>	<u>Sacks</u>	<u>Cement Jobs</u>			<u>Top D</u>	<u>Btm D</u>	<u>cbl</u>
SURFACE CASING	STAGE 1	305	NEAT			10	439	No
PRODUCTION CASING	STAGE 1	250	G			6897	8115	Yes
	STAGE 2	650	G			498	1713	Yes
PRODUCTION CASING	ABANDONMENT PLUC	80	LEAD	FRESH WATER		6580	7925	No
PRODUCTION CASING	ABANDONMENT PLUC	510	LEAD	FRESH WATER		4330	5867	No
PRODUCTION CASING	ABANDONMENT PLUC	130	LEAD	FRESH WATER		135	1470	No
<u>PERFORATIONS</u>	<u>Formation</u>	<u>Zone</u>	<u>Top</u>	<u>Btm</u>	<u>Date</u>	<u>Reason</u>	<u>Comments</u>	
			4606	4608	06/17/2013	CEMENT SQUEEZE		
			5866	5867	06/17/2013	CEMENT SQUEEZE		
J SAND			7994	8004	05/05/1994	PRODUCTION		

Comments: