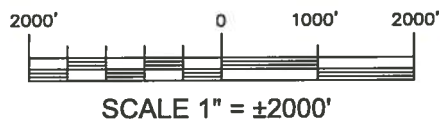
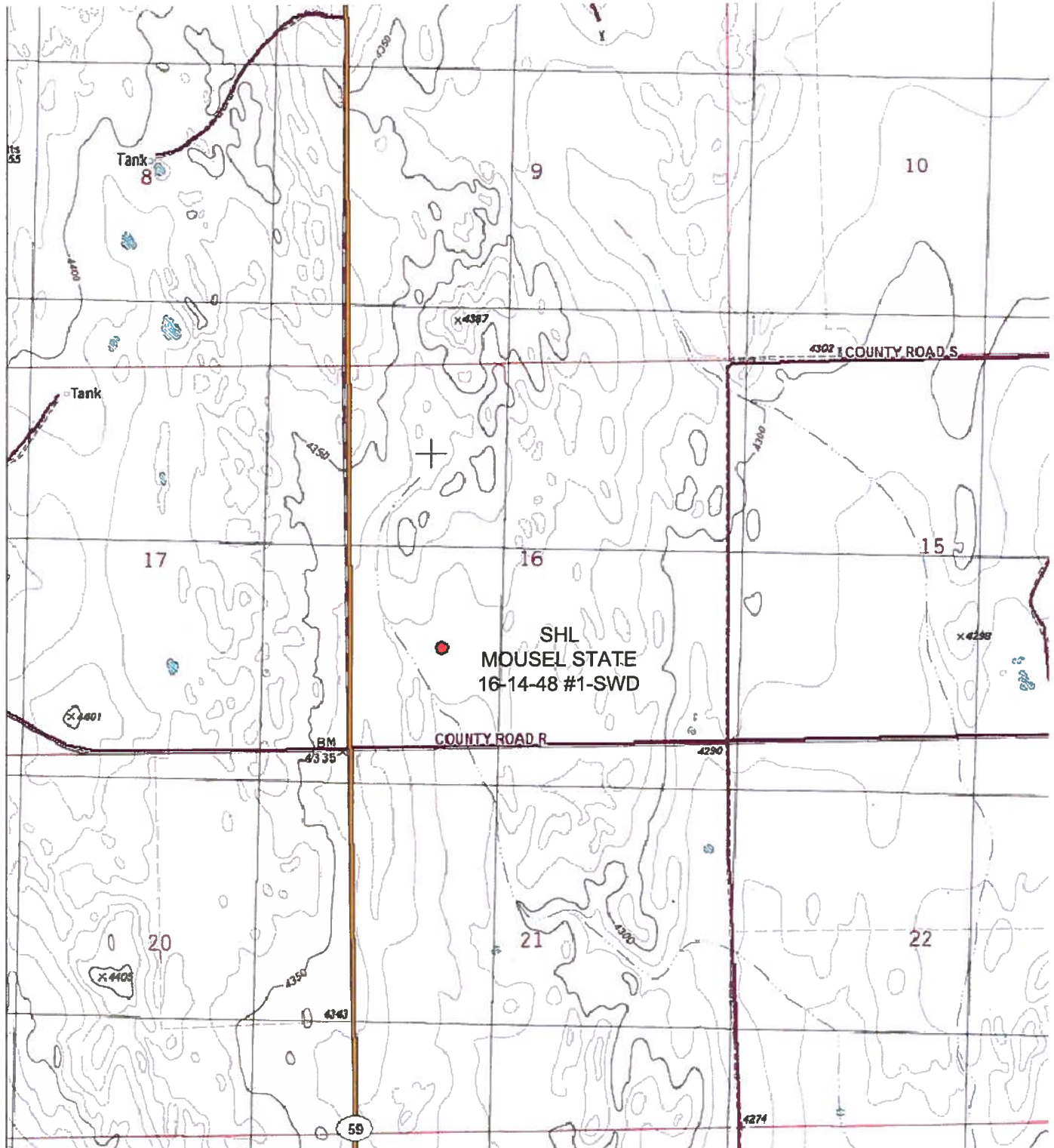


TOPOGRAPHY MAP

MOUSEL STATE 16-14-48 #1-SWD



SCALE 1" = ±2000'

T 14 S
R 48 W
CHEYENNE
COUNTY



POWERTM
Surveying Company, Inc.
Established 1948

120 W. 84TH AVENUE PH. 303-702-1617
THORNTON, COLORADO 80260 FAX. 303-702-1488

WWW.POWERSURVEYING.COM

DATE OF FIELD WORK: 6/25/13

DATE OF COMPLETION: 7/1/13

PROJECT NUMBER: 501-13-175