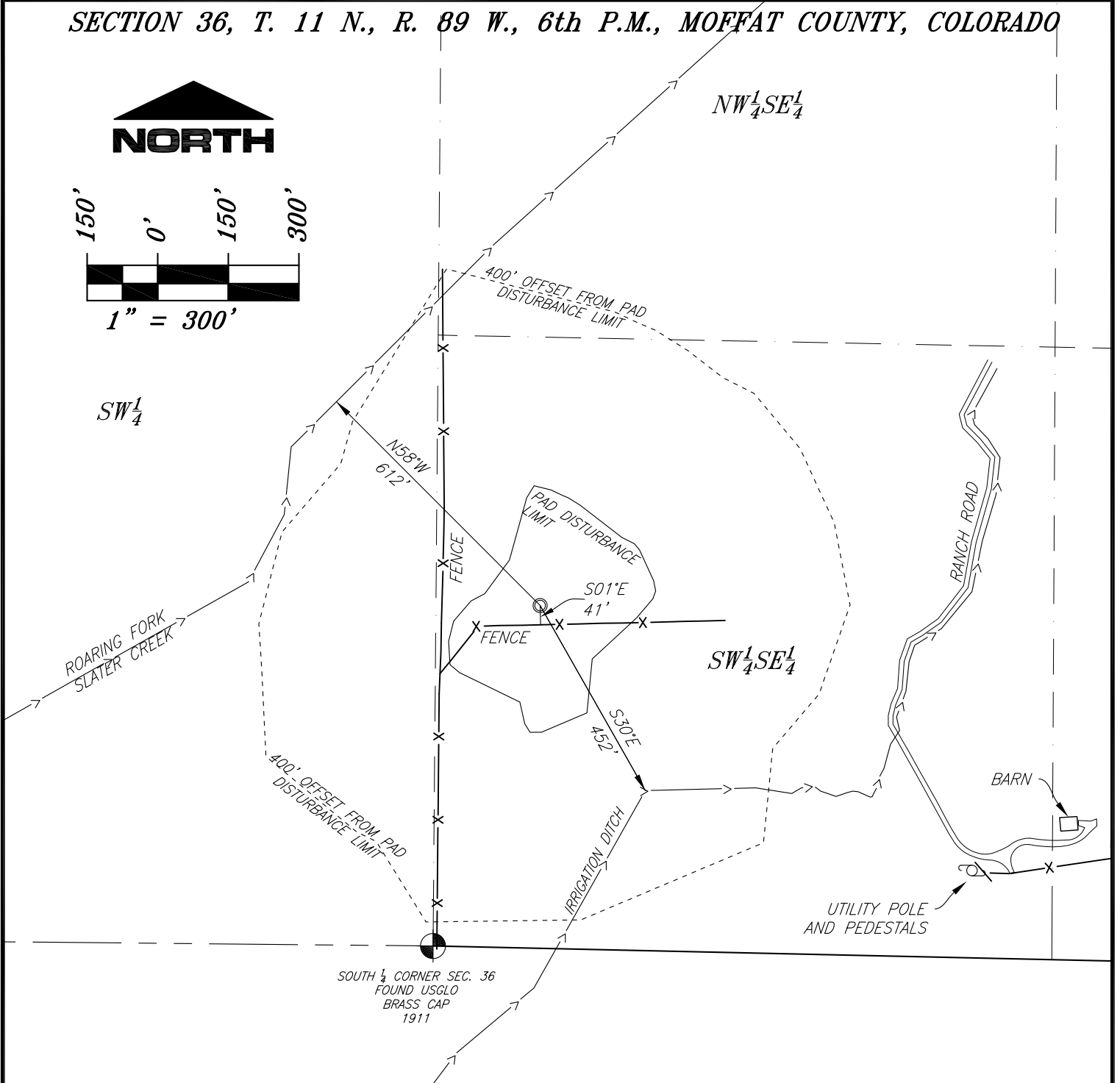
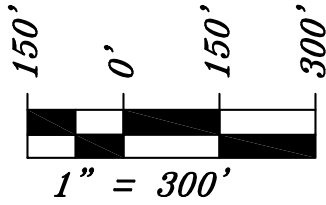


SECTION 36, T. 11 N., R. 89 W., 6th P.M., MOFFAT COUNTY, COLORADO



PETROLEUM RESOURCE MANAGEMENT CORP.
PROPOSED DUNCAN RANCH SOUTHEAST PAD
 Reference Point = DUNCAN RANCH 11-89-36 #3-4 =
 Lat.: 40.860331°N
 Long.: 107.325012°W
 NAD83

SURVEYORS STATEMENT

I, ELWOOD BARRY GILES, BEING A REGISTERED LAND SURVEYOR IN THE STATE OF COLORADO, DO HEREBY CERTIFY THAT THIS PLAT REPRESENTS A SURVEY PERFORMED BY ME OR UNDER MY DIRECT SUPERVISION ON MAY 25, 2013 AND IS TRUE TO THE BEST OF MY KNOWLEDGE AND BELIEF.

Elwood Barry Giles 2 JULY 2013
 ELWOOD BARRY GILES
 COLORADO LS 38150

**Petroleum
 Resource
 Management Corp.**

SGM
 118 West Sixth Street, Suite 200
 Glenwood Springs, CO 81601
 970.945.1004 www.sgm-inc.com

Scale: 1" = 300'

Sheet 1A of 7

WLP

ADDENDUM TO WELL LOCATION PLAT - DUNCAN RANCH 11-89-36 #3-4

SW1/4SE1/4 SECTION 36, T.11N., R.89W., 6TH P.M.

Job# 2013-379.001

Date: 7.2.13

By: REB

File: dUNCAN_APD