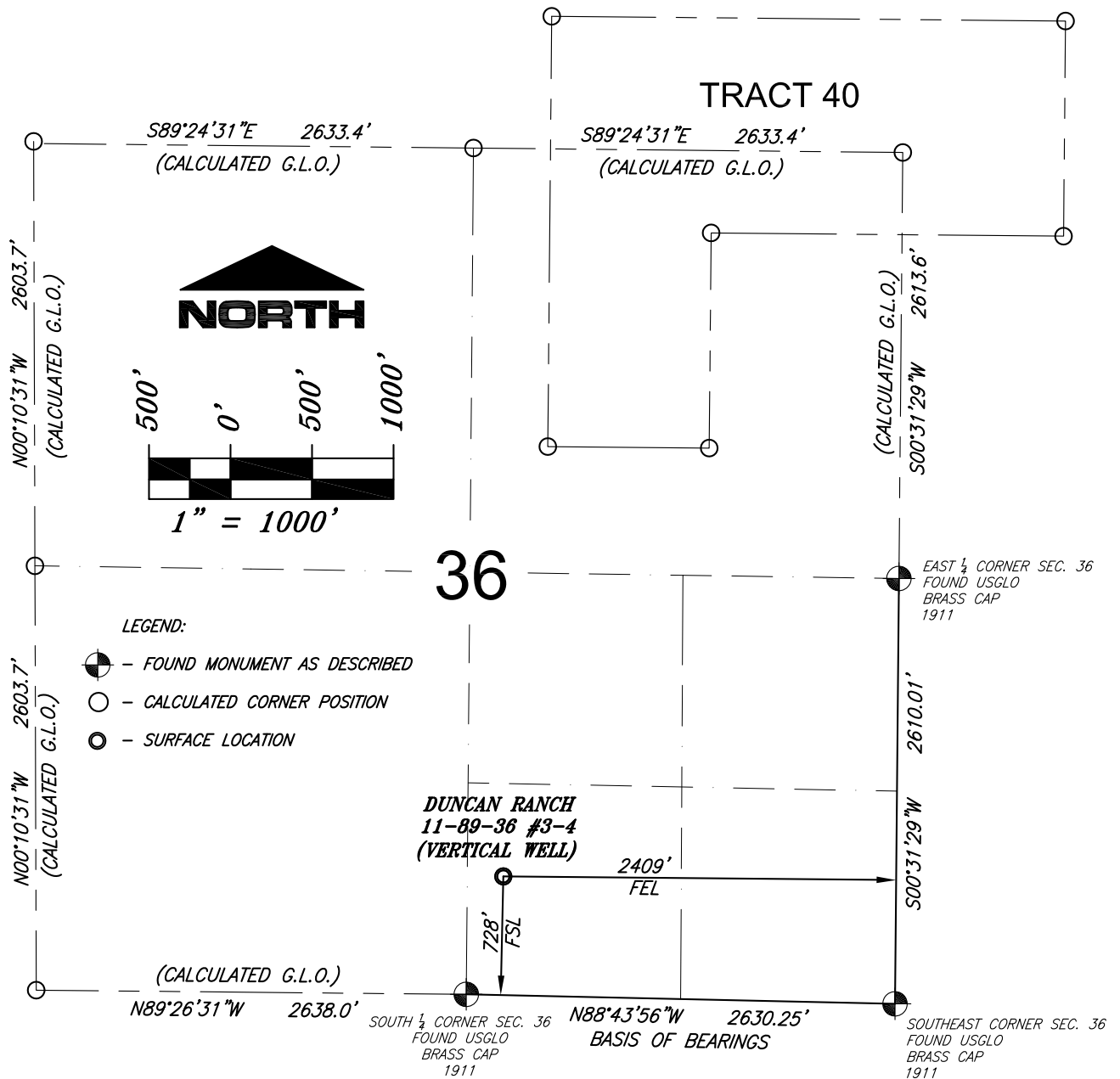


T. 11 N., R. 89 W., 6th P.M., MOFFAT COUNTY, COLORADO



OPERATOR: PETROLEUM RESOURCE MANAGEMENT CORP.

NOTES:

1. GEODETIC POSITIONS ARE SHOWN IN DECIMAL DEGREES.
2. UNITS OF LINEAR MEASUREMENT: U.S. SURVEY FOOT
3. ELEVATIONS ARE BASED ON GPS OBSERVATIONS USING OPUS, GEOID 12, NAVD88.
4. ALL SURFACE (SHL) AND BOTTOM (BHL) HOLE LOCATIONS ARE MEASURED AT 90° ANGLES FROM SECTION LINES.
5. BASIS OF BEARING: N88°43'56"W BETWEEN FOUND MONUMENTS AS SHOWN HEREON.
6. EXISTING GROUND ELEVATION: 7977.4' PROPOSED PAD ELEVATION: 7973.3'.
7. GPS OPERATOR: KYLE TESKY OBSERVED AN AVERAGE PDOP OF ≤ 3.0 FOR ALL SURVEY MEASUREMENTS DEPICTED ON THIS AND SUBSEQUENT SHEETS. ALL GPS OBSERVATIONS ARE IN COMPLIANCE WITH COGCC RULE NO. 215
8. SURFACE USE: RANGELAND
9. USGS QUAD MAP: BUCK POINT

SURVEYORS STATEMENT

I, ELWOOD BARRY GILES, BEING A REGISTERED LAND SURVEYOR IN THE STATE OF COLORADO, DO HEREBY CERTIFY THAT THIS PLAT REPRESENTS A SURVEY PERFORMED BY ME OR UNDER MY DIRECT SUPERVISION ON MAY 25, 2013 AND IS TRUE TO THE BEST OF MY KNOWLEDGE AND BELIEF.

Elwood Barry Giles
ELWOOD BARRY GILES
COLORADO LS 38150
DATE: 2 JULY, 2013

WELL NAME	SECTION LINES TIES		NAD 83 COORDINATE	
DUNCAN RANCH 11-89-36 #3-4	FOOTAGES	FOOTAGES		
SURFACE AND BOTTOM HOLE LOCATION	728' FSL	2409' FEL	40.860331°N	107.325012°W

**Petroleum
Resource
Management Corp.**

SGM
118 West Sixth Street, Suite 200
Glenwood Springs, CO 81601
970.945.1004 www.sgm-inc.com

Scale: 1" = 1000'

Sheet 1 of 7

WLP

WELL LOCATION PLAT - DUNCAN RANCH 11-89-36 #3-4
SW1/4SE1/4 SECTION 36, T.11N., R.89W., 6TH P.M.

Job# 2013-379.001 Date: 7.2.13 By: REB File: Duncan_APD