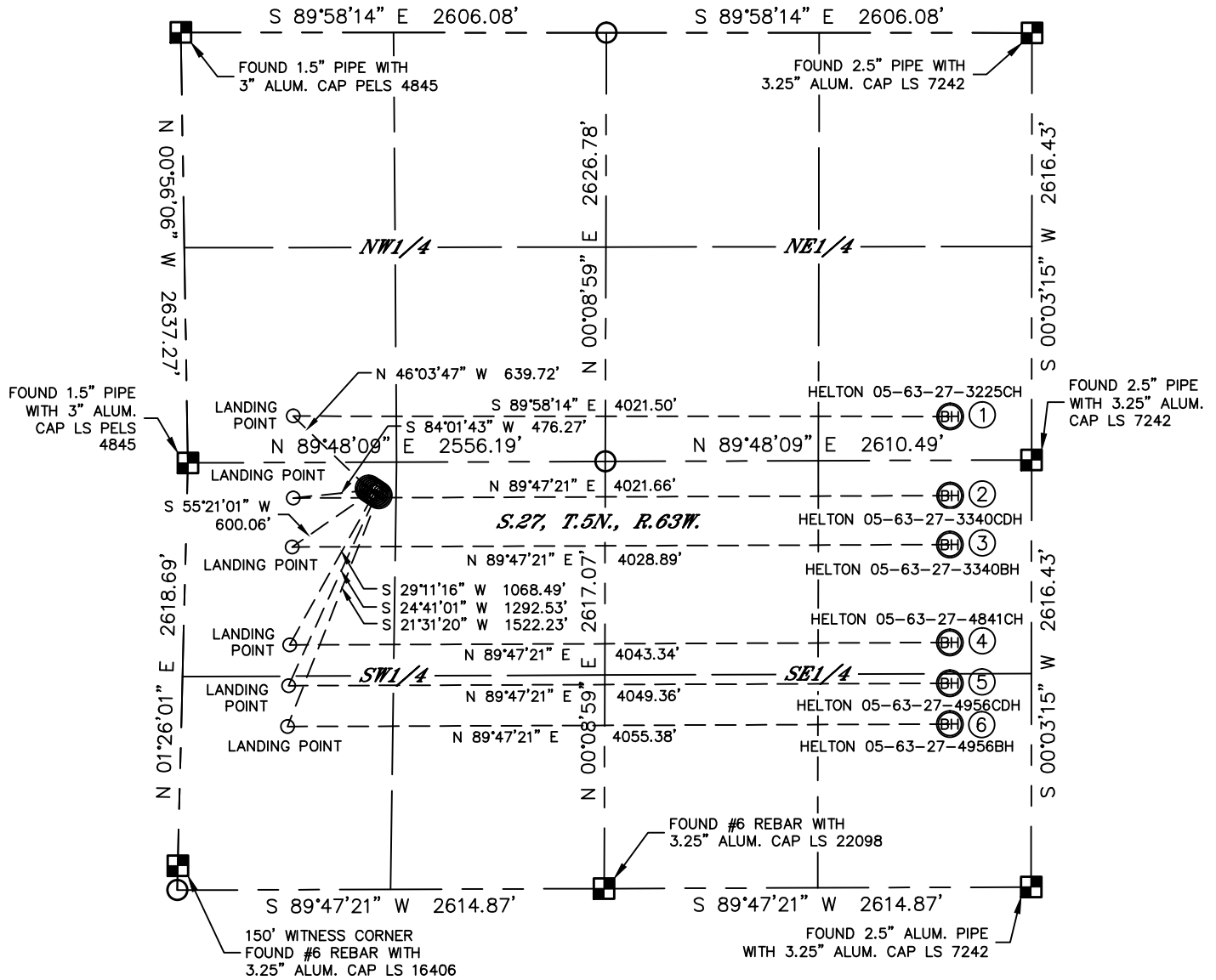


MULTI-WELL PLAN

HELTON 05-63-27 PAD

THIS MAP DOES NOT REPRESENT A BOUNDARY SURVEY

SECTION: 27
TOWNSHIP: 5N
RANGE: 63W



- ①

—BOTTOM HOLE—
HELTON
05-63-27-3225CH
2350' FNL
500' FEL
LAT: 40.37108°N
LONG: 104.41433°W

②

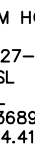
—BOTTOM HOLE—
HELTON
05-63-27-3340CDH
2400' FSL
500' FEL
LAT: 40.36975°N
LONG: 104.41435°W

③

—BOTTOM HOLE—
HELTON
05-63-27-3340BH
2100' FSL
500' FEL
LAT: 40.36893°N
LONG: 104.41436°W

④

—BOTTOM HOLE—
HELTON
05-63-27-4841CH
1500' FSL
500' FEL
LAT: 40.36728°N
LONG: 104.41439°W

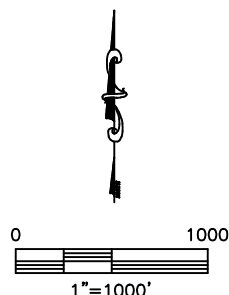


⑤

—BOTTOM HOLE—
HELTON
05-63-27-4956CDH
1250' FSL
500' FEL
LAT: 40.36660°N
LONG: 104.41440°W

⑥

—BOTTOM HOLE—
HELTON
05-63-27-4956BH
1000' FSL
500' FEL
LAT: 40.36591°N
LONG: 104.41442°W



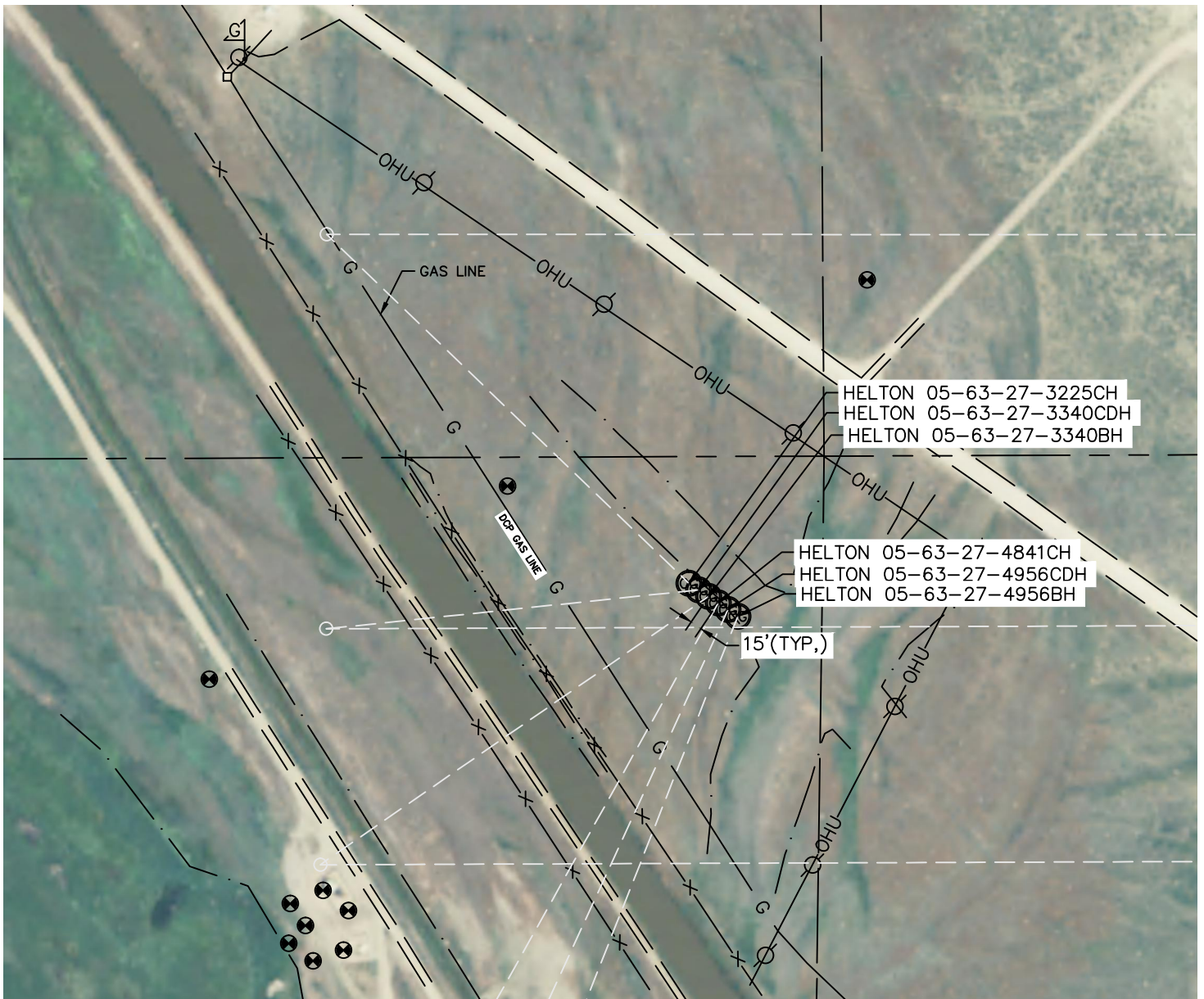


Lat40°, Inc. 1635 Foxtrail Drive, Suite 325 Loveland, CO 970-776-3321

MULTI-WELL PLAN

HELTON 05-63-27 PAD

SECTION: 27
TOWNSHIP: 5N
RANGE: 63W



0 200
1"=200'

DATE: 5/21/2013
PROJECT#: 2013048