

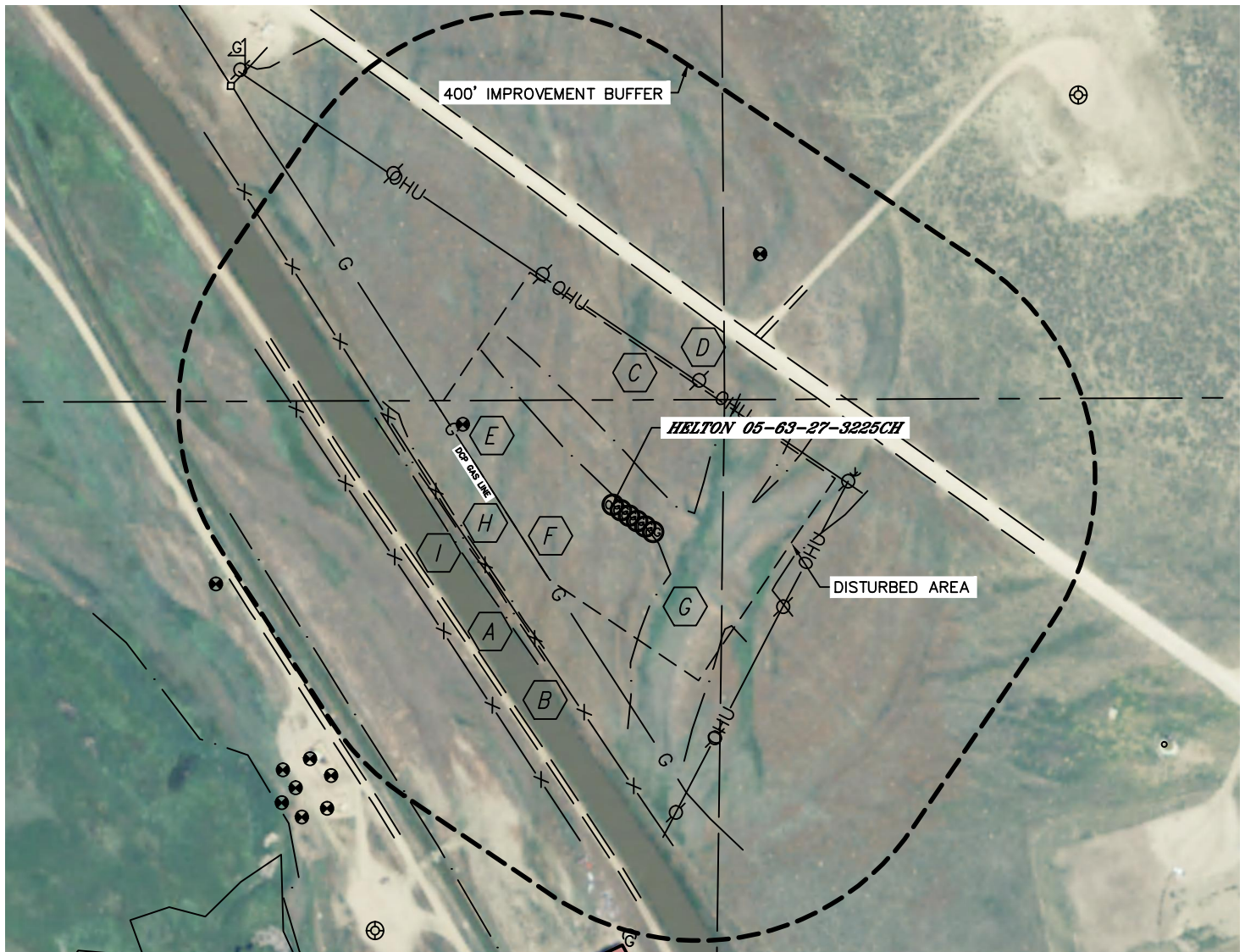


Lat40°, Inc. 1635 Foxtrail Drive, Suite 325 Loveland, CO 970-776-3321

LOCATION DRAWING

HELTON 05-63-27 PAD

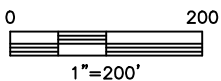
SECTION: 27
TOWNSHIP: 5N
RANGE: 63W



IMPROVEMENTS:

(MEASURED FROM THE PROPOSED HELTON 05-63-27-3225CH WELL LOCATION)

- | | | | |
|----------|--|----------|----------------------|
| A | FIELD ROAD 297' SW, 315' & 343' NE | G | LOW AREA 138' SE |
| B | FENCE 216' & 325' SW | H | SWALE 211' SW |
| C | OVERHEAD UTILITY LINE 230' NE, 305' SE | I | CANAL 233' & 506' SW |
| D | POWER POLE 233' & 364' NE, 359' NW, 305', 391' & 483' SE | | |
| E | MONITORING WELL 262' NW, 477' NE | | |
| F | GAS LINE (DCP) 143' SW | | |



NEAREST: BUILDING 677' S (OUT-BUILDING), PUBLIC ROAD 5280'+,
ABOVE GROUND UTILITY 230' NE, RAILROAD 5280'+, PROPERTY LINE 391' E

DATE: 5/21/2013
PROJECT#: 2013048