

SS: lt tan- lt gy, m-fgr, blk-y-sbbkly,  
sbrndd-sbang, mod srt, vsft-sft, arg  
mtx, non calc, sl mica  
CLYST: lt-mgy, vfgr, sft-firm, sdy ip

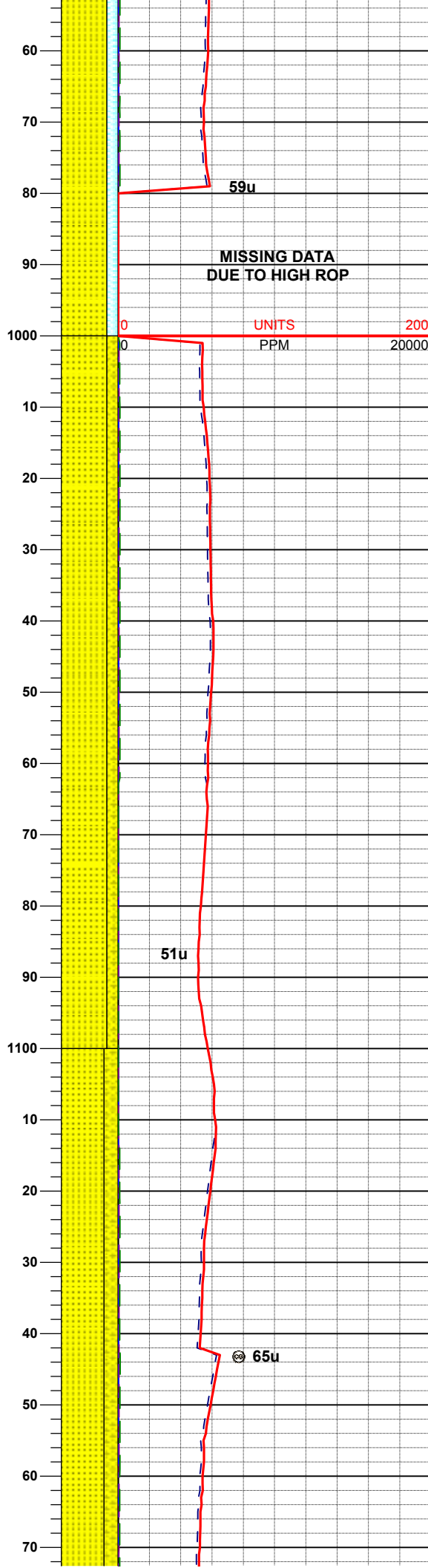
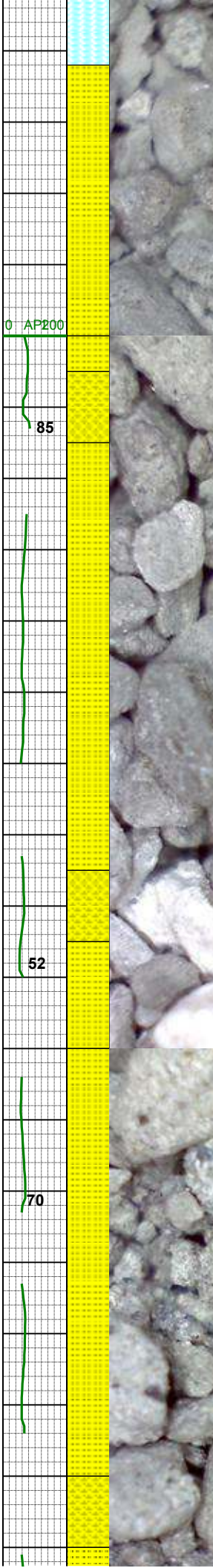
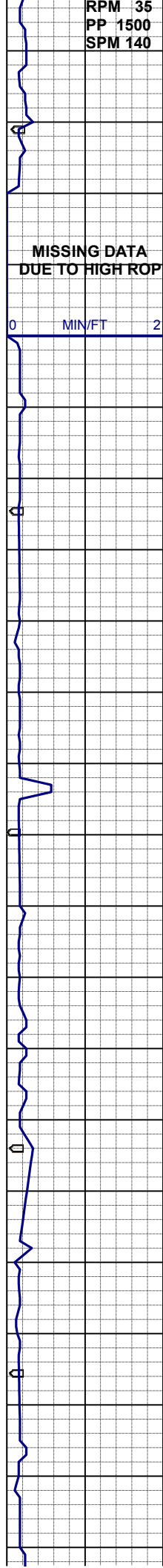
MD 749'  
INC 0.6°  
AZI 233.6°  
TVD 749.0'

MD 839'  
INC 0.6°  
AZI 234.3°  
TVD 839.0'

CLYST: lt-mgy, vfgr, sft-firm, sdy ip

MD 928'  
INC 0.8°  
AZI 255.0°  
TVD 928.0'

SS: lt tan- lt gy, m-fgr, blk-y-sbbkly,  
sbrndd-sbang, mod srt, vsft-sft, arg  
mtx, non calc, sl mica  
CLYST: lt-mgy, vfgr, sft-firm, sdy ip



SS: lt tan- lt gy, m-fgr, blk-ssbly,  
sbrndd-sbang, mod srt, vsft-sft, arg  
mtx, non calc,  
SHYSS: gy-modgy, f-vfgr, sbbly-  
sbply, mod srt, sft-firm, sdy ip, arg  
mtx, slcalc

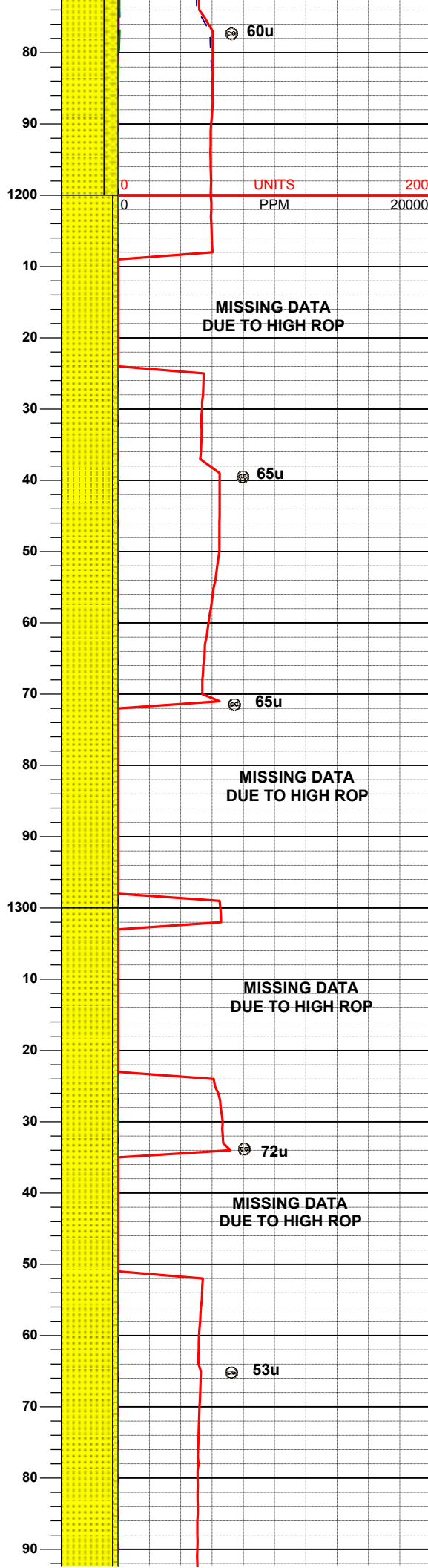
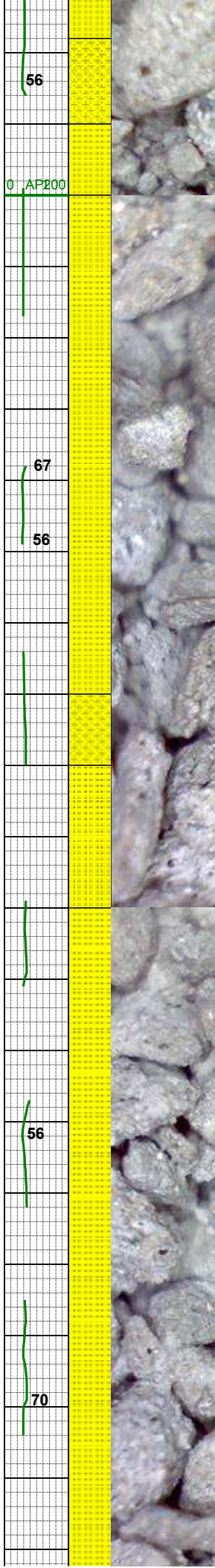
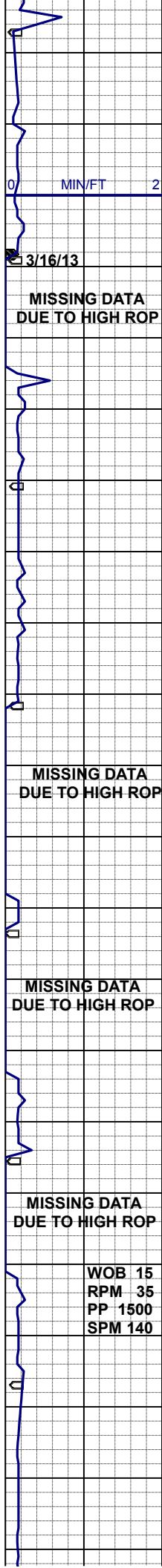
MD 1018'  
INC 0.7°  
AZI 238.3°  
TVD 1017.0'

WT 8.4 / VIS 26

MD 1126'  
INC 0.7°  
AZI 257.3°  
TVD 1126.0'

SS: lt tan- lt gy, m-fgr, blk-ssbly,  
sbrndd-sbang, mod srt, vsft-sft, arg-sil  
mtx, tr glau, sl mica  
SHYSS: gy-modgy, f-vfgr, sbbly-  
sbply, mod srt, sft-firm, sdy ip, arg  
mtx, slcalc





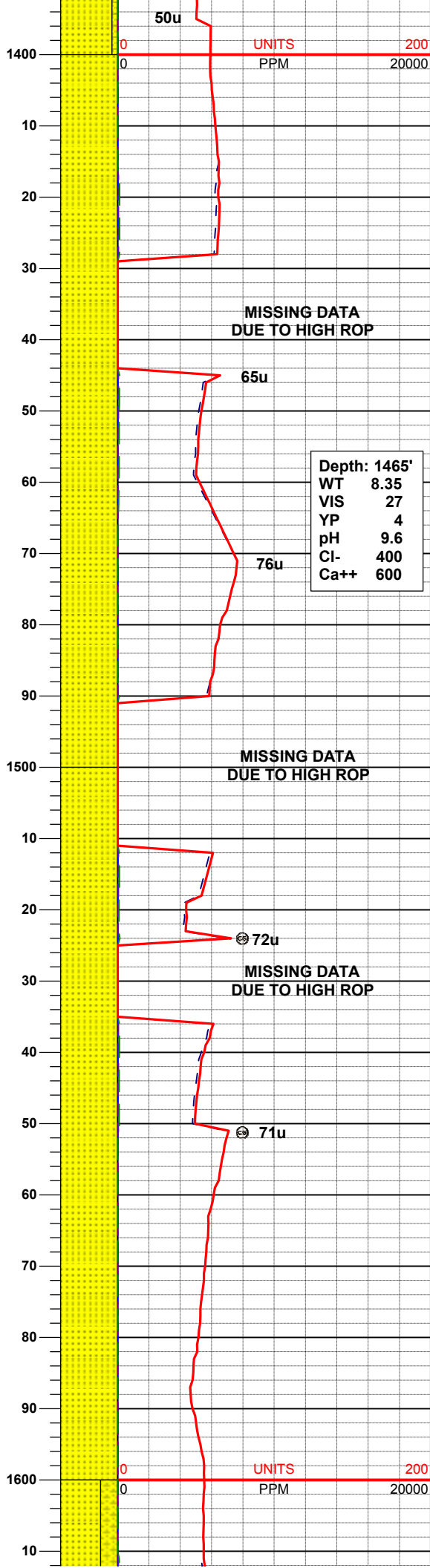
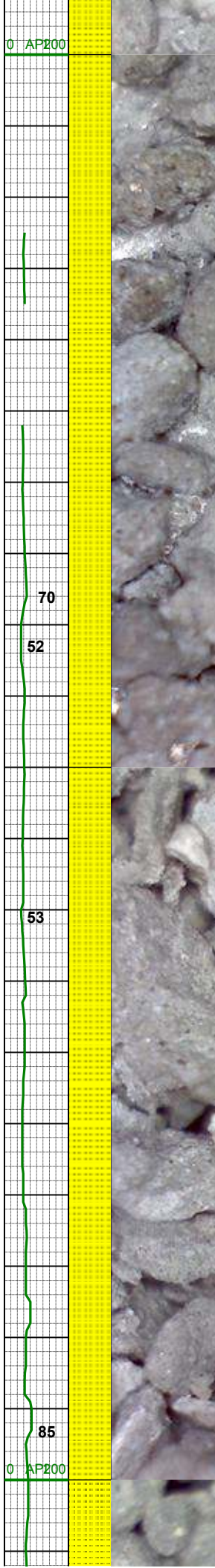
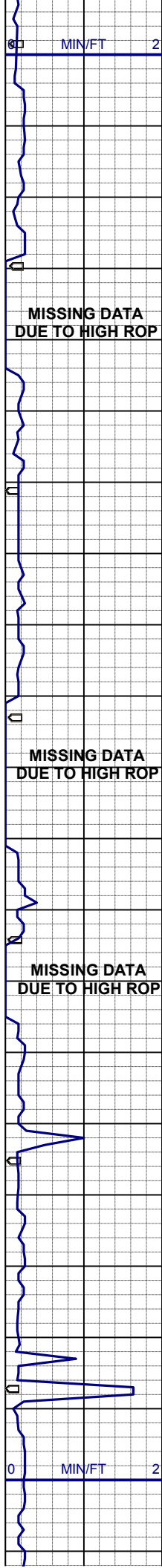
MD 1220'  
INC 0.4°  
AZI 284.2°  
TVD 1220.0'

SS: lt tan- lt gy, m-fgr, blk-ssbly,  
sbrnd-sbang, mod srt, vsft-sft, arg-sil  
mtx, tr glau, sl mica  
SHYSS: gy-modgy, f-vfgr, sbblky-  
sbply, mod srt, sft-firm, sdy ip, arg  
mtx, slcalc

WT 8.4 / VIS 25

MD 1315'  
INC 0.3°  
AZI 303.3°  
TVD 1315.0'

SS: lt tan- lt gy, m-fgr, blk-ssbly,  
sbrnd-sbang, mod srt, vsft-sft, arg-sil  
mtx, tr glau, sl mica  
SHYSS: gy-modgy, f-vfgr, sbblky-  
sbply, mod srt, sft-firm, sdy ip, arg  
mtx, slcalc



MD 1410'  
INC 0.7°  
AZI 311.6°  
TVD 1410.0'

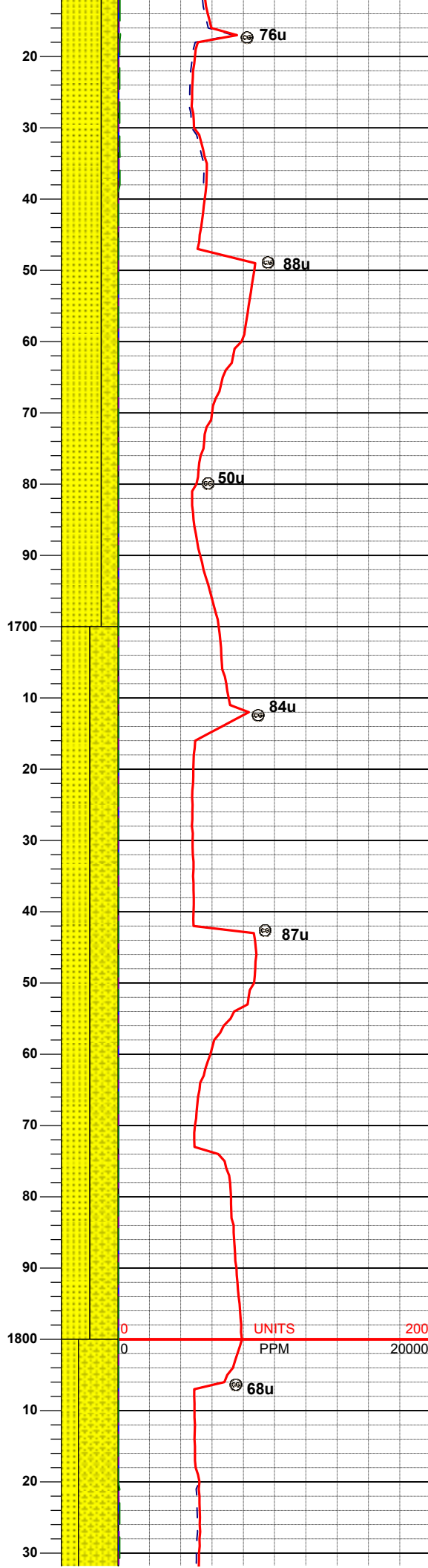
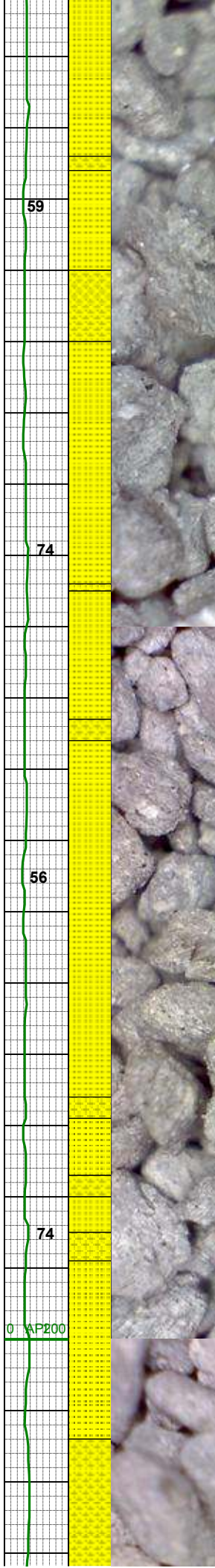
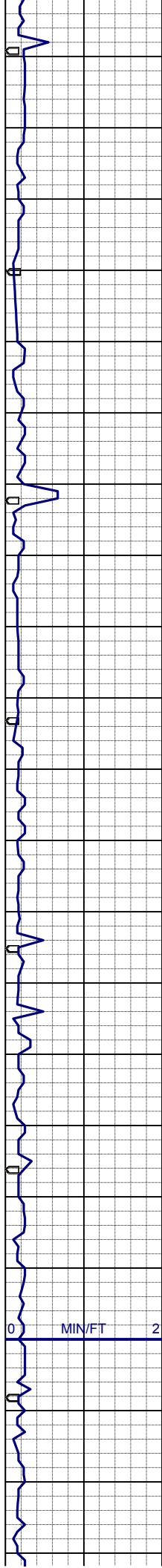
SS: lt tan- lt gy, m-fgr, blkly-sbblky,  
sbrndd-sbang, mod srt, vsft-sft,arg  
mtx, tr glau, sl mica

MD 1504'  
INC 0.7°  
AZI 333.1°  
TVD 1504.0'

SS: vlt-mgy, vf- fgr, pred sbrndd, mod  
srt, vsft- sft, arg mtx, p cnt

MD 1599'  
INC 0.4°  
AZI 342.0°  
TVD 1598.9'





SS- SHYSS: vlt-mgy, vf- fgr, sbrnodd-  
sbplty, mod srt, vsft- sft, arg mtx, p  
cmt, sl calc, slty

WT 8.4 / VIS 27

MD 1694'  
INC 0.4°  
AZI 354.5°  
TVD 1693.9'

SS- SHYSS: vlt-mgy, vf- fgr, sbrnodd-  
sbplty, mod srt, vsft- sft, arg mtx, p  
cmt, sl calc, slty

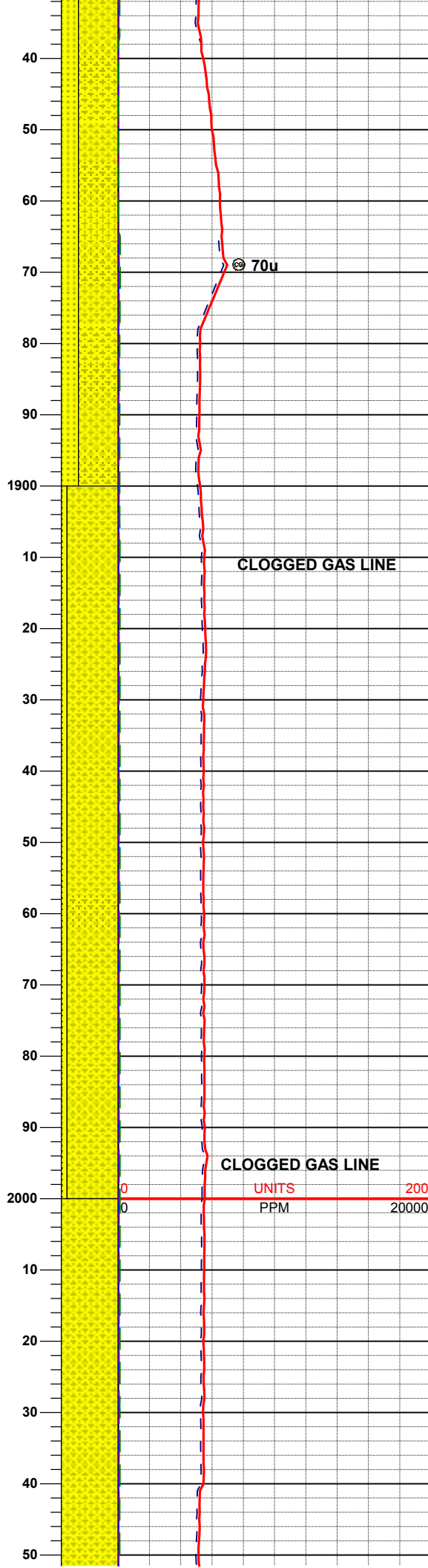
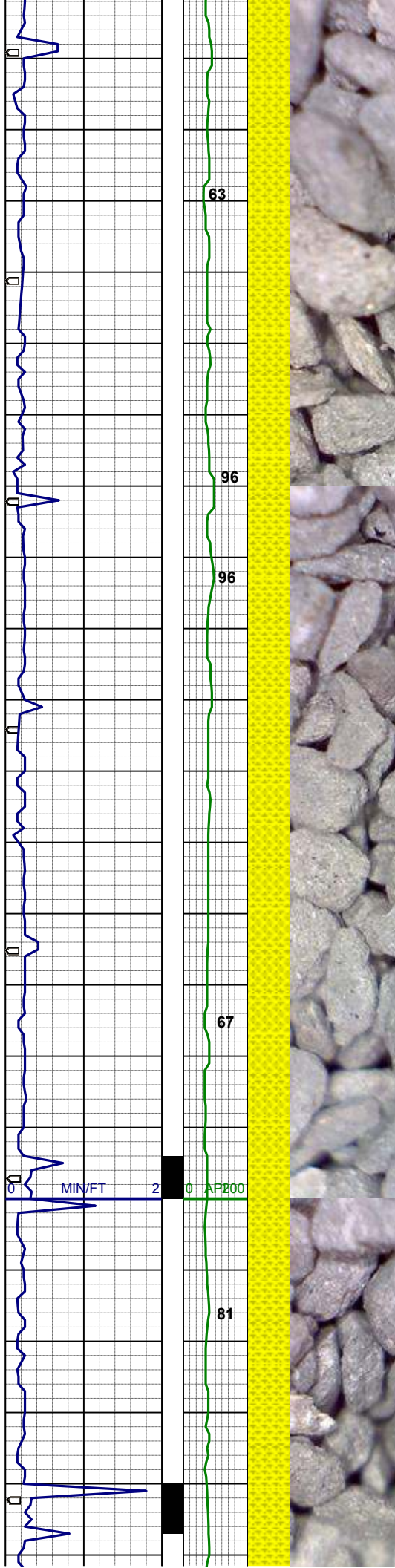
MD 1788'  
INC 0.5°  
AZI 351.5°  
TVD 1787.9'

UNITS

PPM

200

20000



SS- SHYSS: vlt-mgy, vf- fgr, sbrn-dd-  
sbplty, mod srt, vsft- sft, arg mtX, p  
cmt, sl calc, slty

WT 8.4 / VIS 28

MD 1883'  
INC 0.4°  
AZI 1.4°  
TVD 1882.9'

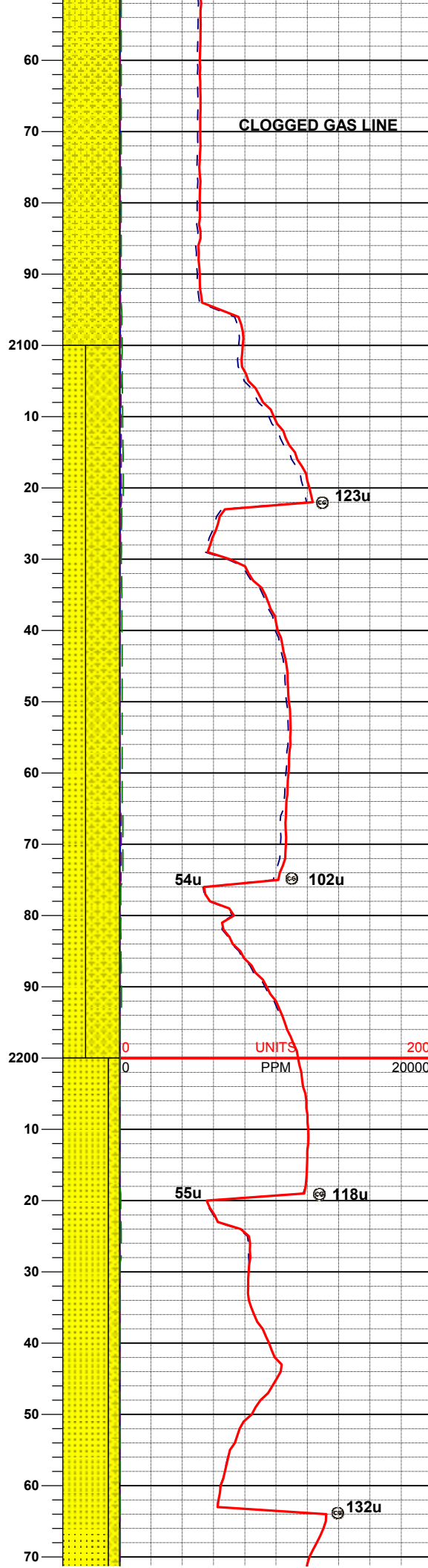
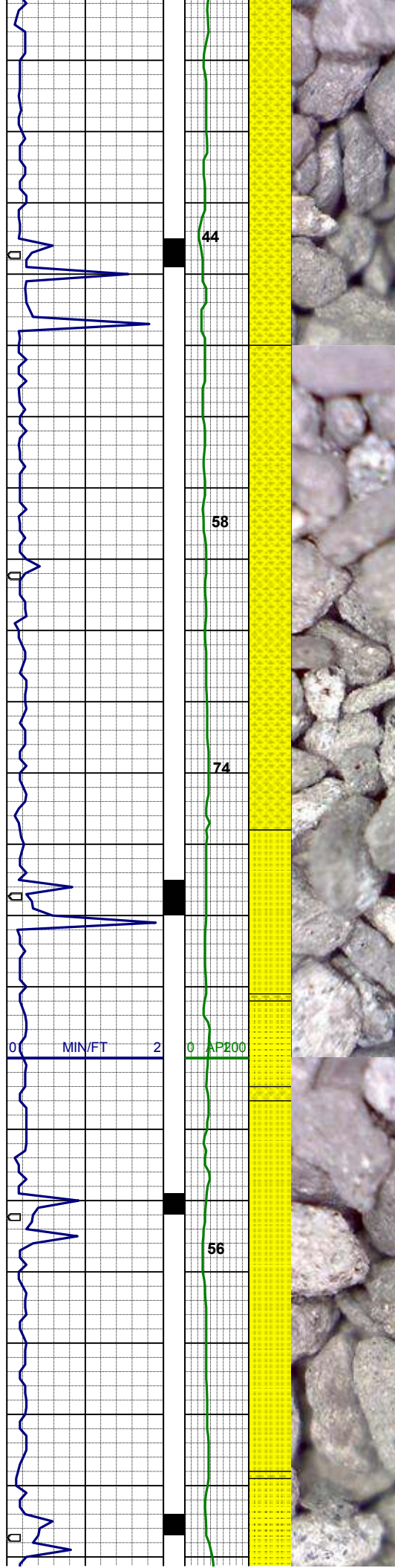
MD 1946'  
INC 0.1°  
AZI 133.2°  
TVD 1945.9'

SHYSS: vlt-mgy, vf- fgr, sbrn-dd-  
sbplty, mod srt, vsft- sft, arg mtX, p  
cmt, sl calc, slty

MD 2036'  
INC 2.3°  
AZI 231.8°  
TVD 2035.9'

SHYSS: vlt-mgy, vf- fgr, sbrn-dd-  
sbplty, mod srt, vsft- sft, arg mtX, p  
cmt, sl calc, slty





Depth, m, sl calc, slty, arg mtz, p cmt, sl calc, slty

MD 2126'  
INC 4.4°  
AZI 239.7°  
TVD 2125.8'

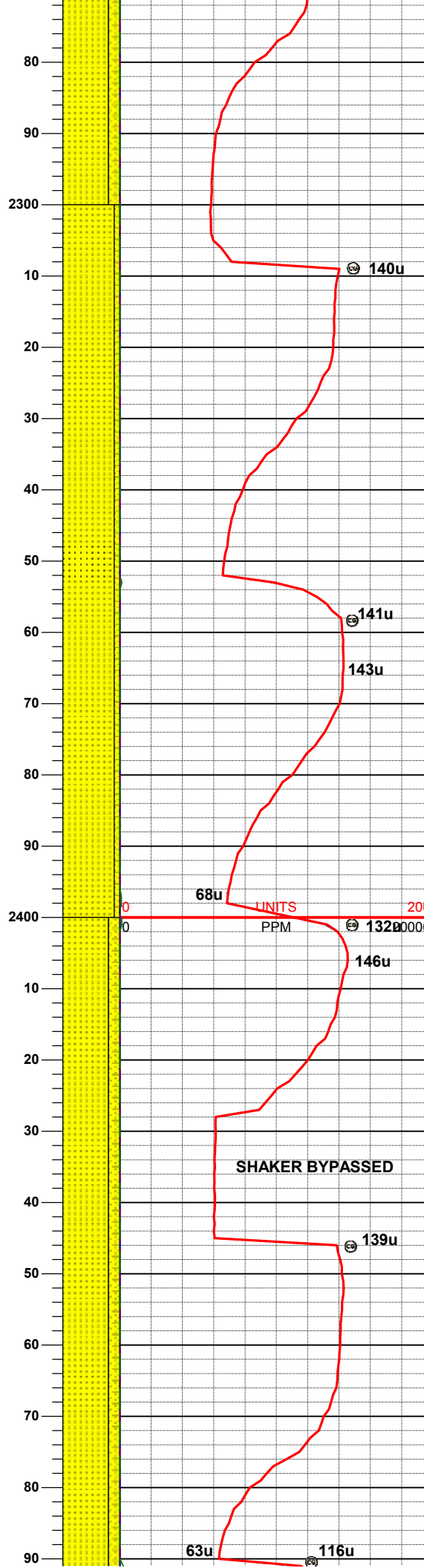
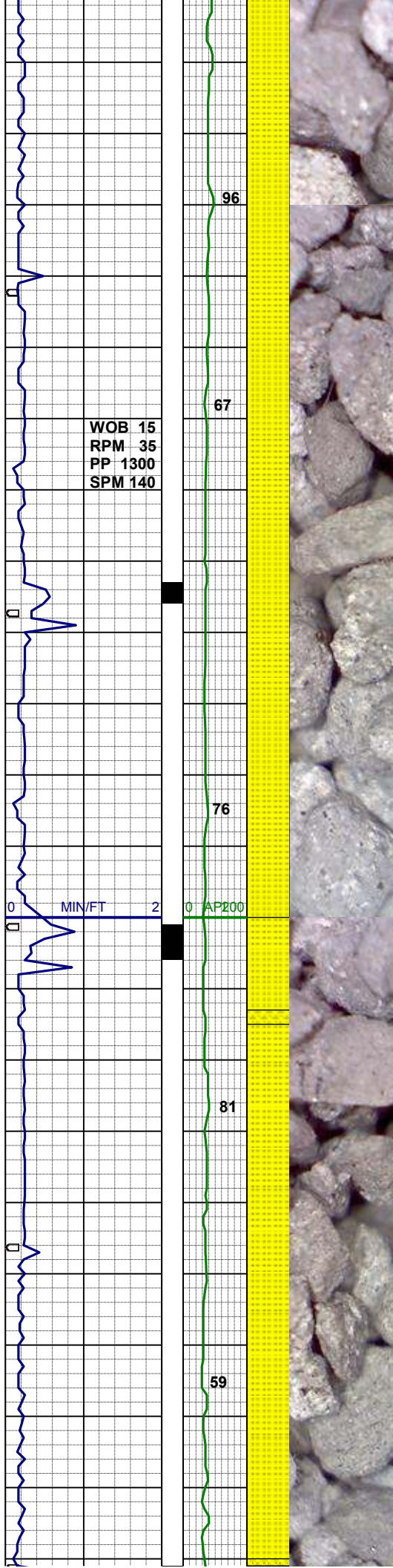
SHYSS: lt- mgy, vf- fgr, sbrn-dd-  
sbplty, mod srt, vsft- sft, arg mtz, mod  
cmt, sl calc, slty  
SS: wh- ltgy, f- mgr, sbblky, wsrt, brit,  
arg- sil mtz, p cmt, sl calc, tr glau, tr  
pyr

MD 2216'  
INC 4.6°  
AZI 221.1°  
TVD 2215.5'

WT 8.4 / VIS 27

SS: wh- ltgy, f- mgr, sbblky, wsrt, brit,  
arg- sil mtz, p cmt, sl calc, tr glau, tr  
pyr  
SHYSS: lt- mgy, vf- fgr, sbrn-dd-  
sbplty, mod srt, vsft- sft, arg mtz, mod  
cmt, sl calc, slty





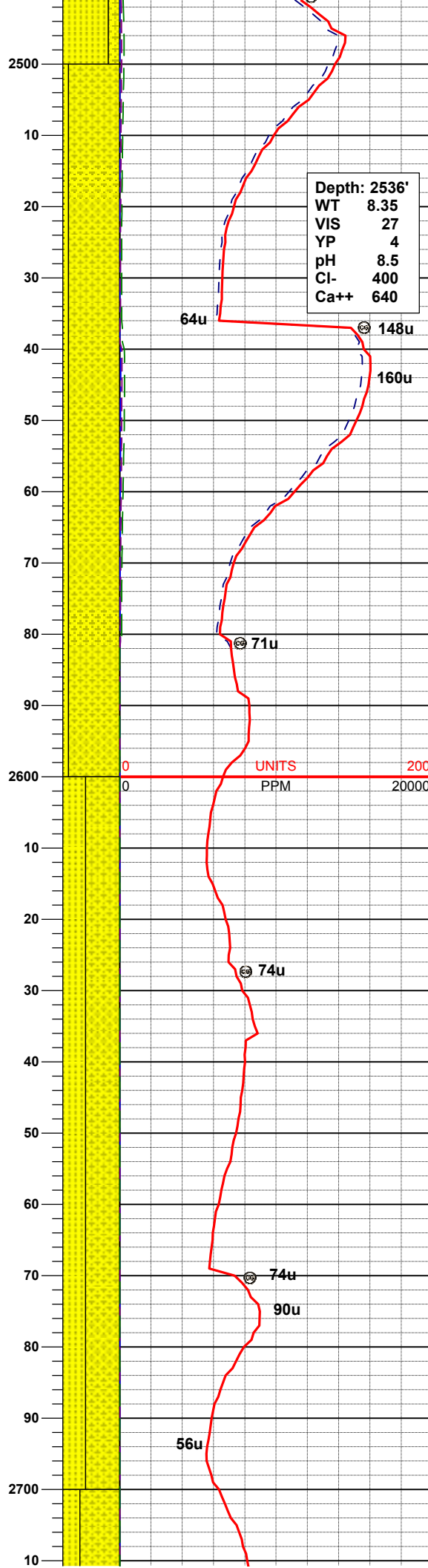
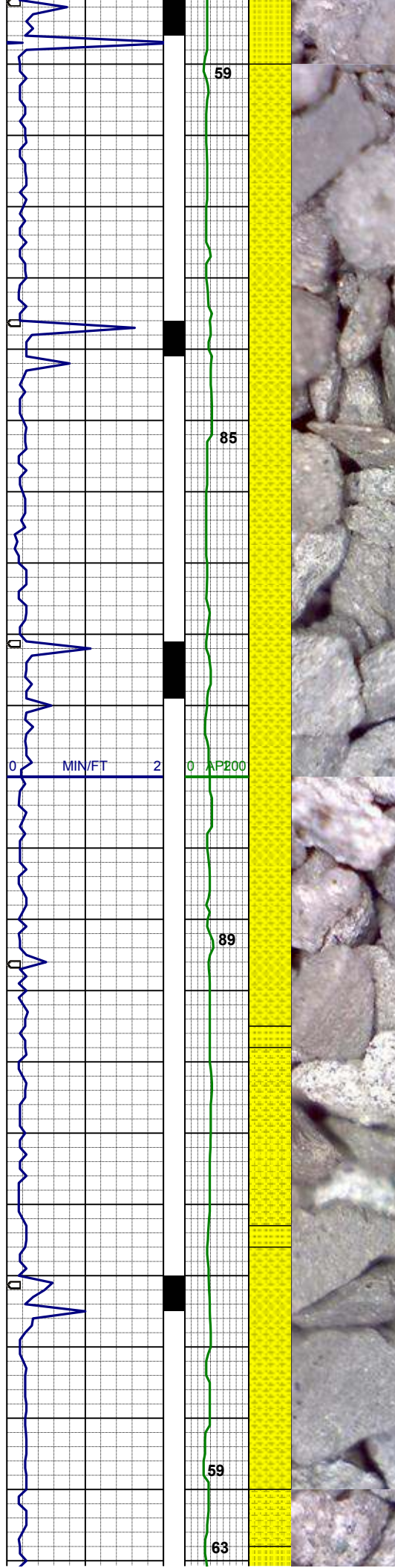
MD 2305'  
INC 5.5°  
AZI 219.0°  
TVD 2304.1'

SS: wh-ltgy, f-mgr, sbbiky, wsrt, brit, arg-sil mtx, p cmt, sl calc, tr glau, tr pyr  
SHYSS: lt- mgy, vf- fgr, sbrn-dd-sbplty, mod srt, vsft- sft, arg mtx, mod cmt, sl calc, slty

MD 2395  
INC 6.9°  
AZI 225.1°  
TVD 2393.6'

SS: wh-ltgy, s&p ip, clr- trnsl, f-mgr, sbbiky, wsrt, brit, arg-sil mtx, p cmt, sl calc, tr glau, tr pyr  
SHYSS: lt- mgy, vf- fgr, trnsl- op, sbrn-dd-sbplty, mod srt, vsft- sft, arg mtx, mod cmt, sl calc, slty

MD 2485'  
INC 7.6°  
AZI 229.9°  
TVD 2482.9'



Depth: 2536'  
WT 8.35  
VIS 27  
YP 4  
pH 8.5  
Cl- 400  
Ca++ 640

WT 8.4 / VIS 26

SHYSS: lt- mgy, vf- fgr, trns- op, sbrndd- sbplty, mod srt, vsft- sft, arg mtz, mod cmt, sl calc, slty, tr bent  
SS: wh- ltgy, s&p ip, clr- trns- l, f-mgr, sbbiky, wsrt, brit, arg-sil mtz, p cmt, sl calc

MD 2575'  
INC 9.2°  
AZI 235.3°  
TVD 2571.9'

64u 148u

160u

71u

74u

74u

90u

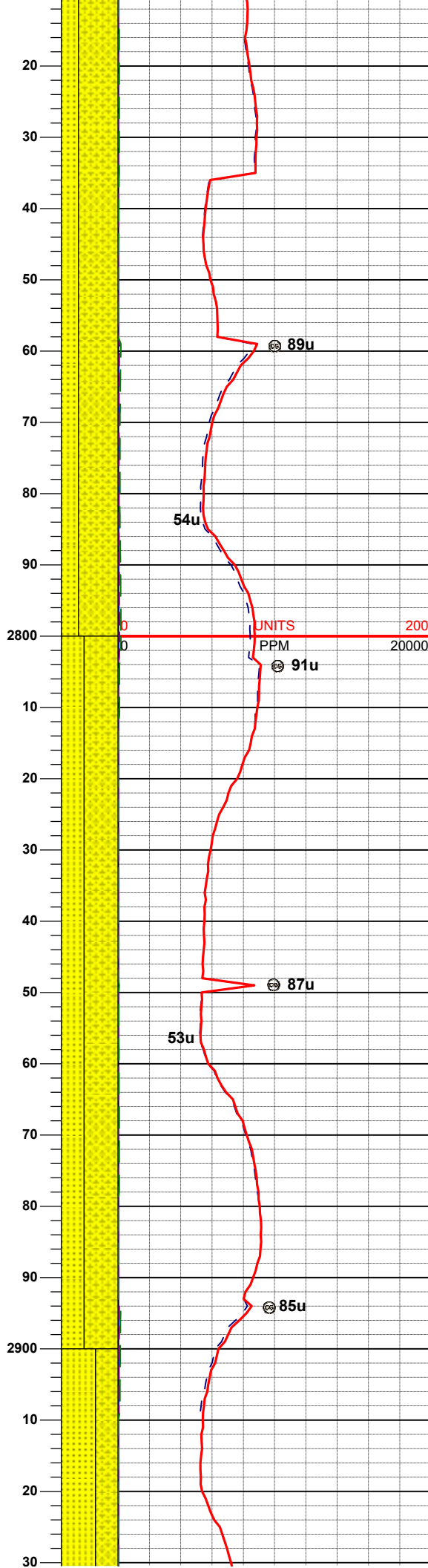
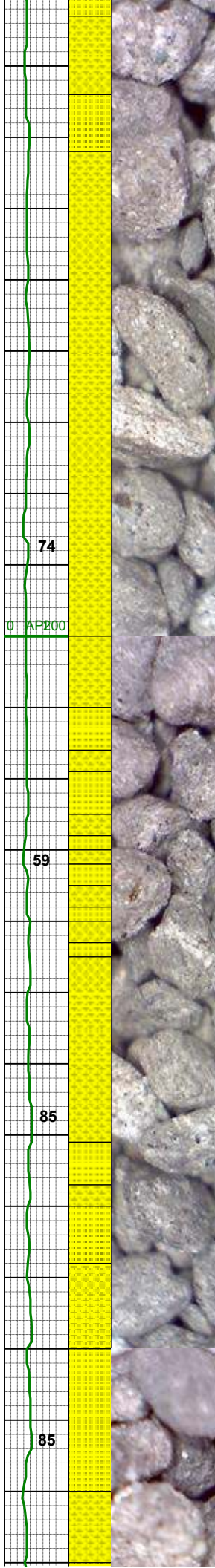
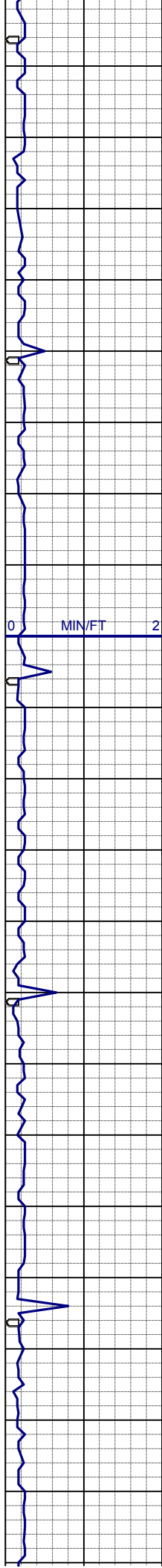
56u

SHYSS: lt- mgy, vf- fgr, trns- op, sbrndd- sbplty, p srt, vsft- sft, arg mtz, mod cmt, sl calc, slty, grdg- sltysh  
SS: wh- mgy, s&p ip, clr- trns- l, f-mgr, sbbiky, wsrt, brit, arg-sil mtz, p cmt, sl calc, occ glau

MD 2665'  
INC 10.2°  
AZI 233.7°  
TVD 2660.6'

UNITS  
PPM 20000





SHYSS: lt- mgy, vf- fgr, trns- op,  
sbrndd- sbplty, p srt, vsft- sft, arg mtx,  
mod cmt, sl calc, slty, grdg- shysltst  
SS: wh- mgy, s&p ip, clr- trns- f-mgr,  
sbbly, wsr, brit, arg-sil mtx, p cmt, sl  
calc, tr glau

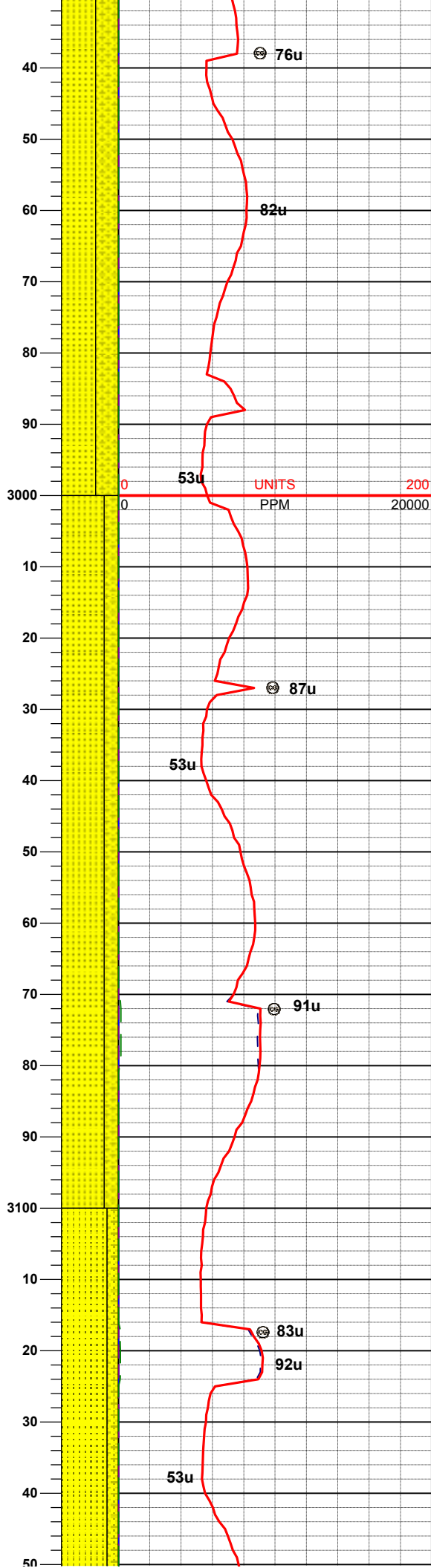
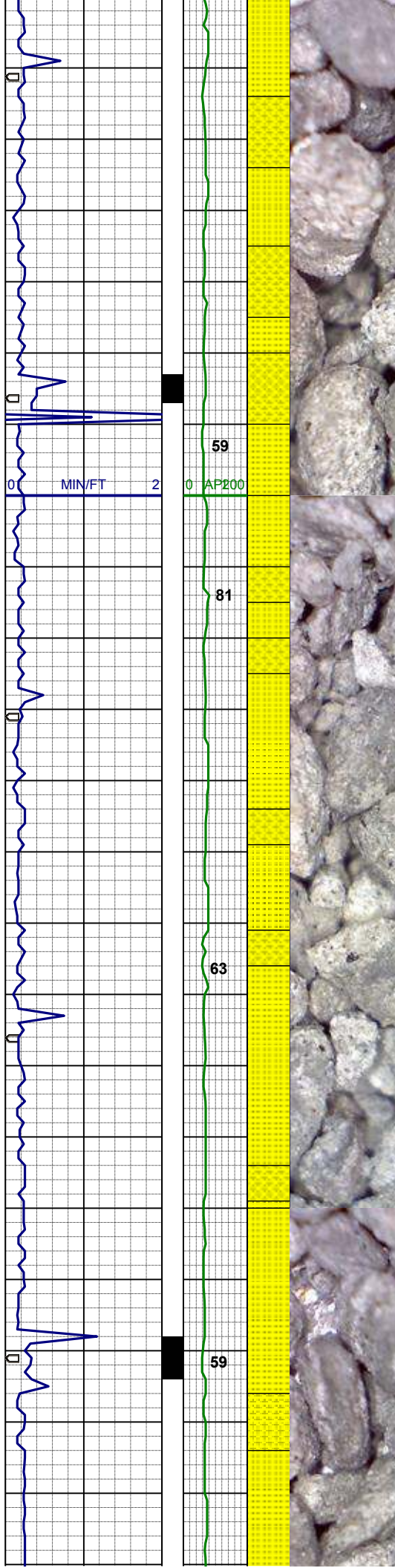
MD 2755'  
INC 10.2°  
AZI 229.2°  
TVD 2749.2'

WT 8.4 / VIS 26

MD 2845'  
INC 10.1°  
AZI 225.3°  
TVD 2837.8'

SHYSS: lt- mgy, vf- fgr, trns- op,  
sbrndd- sbplty, p srt, vsft- sft, arg mtx,  
mod cmt, sl calc, slty, grdg- shysltst  
SS: wh- mgy, clr- trns- f-mgr, sbbly,  
wsr, brit, arg-sil mtx, p cmt, sl calc, tr  
glau, sl mica





MD 2935'  
INC 10.1°  
AZI 221.8°  
TVD 2926.4'

SHYSS: lt- mgy, vf- fgr, trnsl- op,  
sbrndd- sbplty, p srt, vsft- sft, arg mtx,  
occ v arg, mod cmt, sl calc, slty, grdg-  
shysltst  
SS: wh- mgy, clr- trnsl, f-mgr, sbblky,  
wsrt, brit, arg-sil mtx, p cmt, sl calc, tr  
glau, sl mica

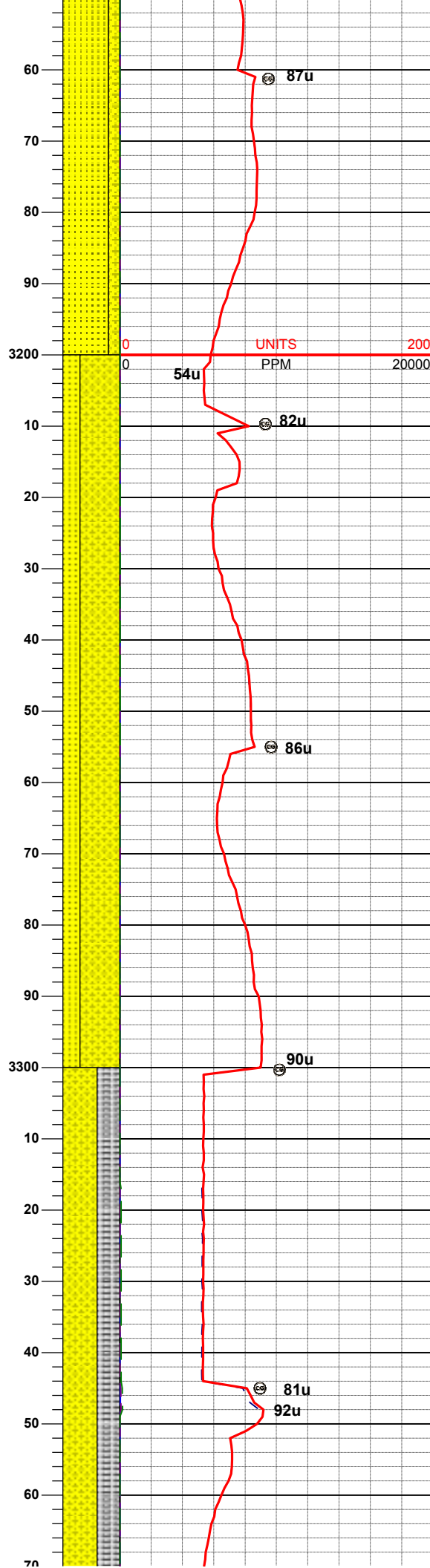
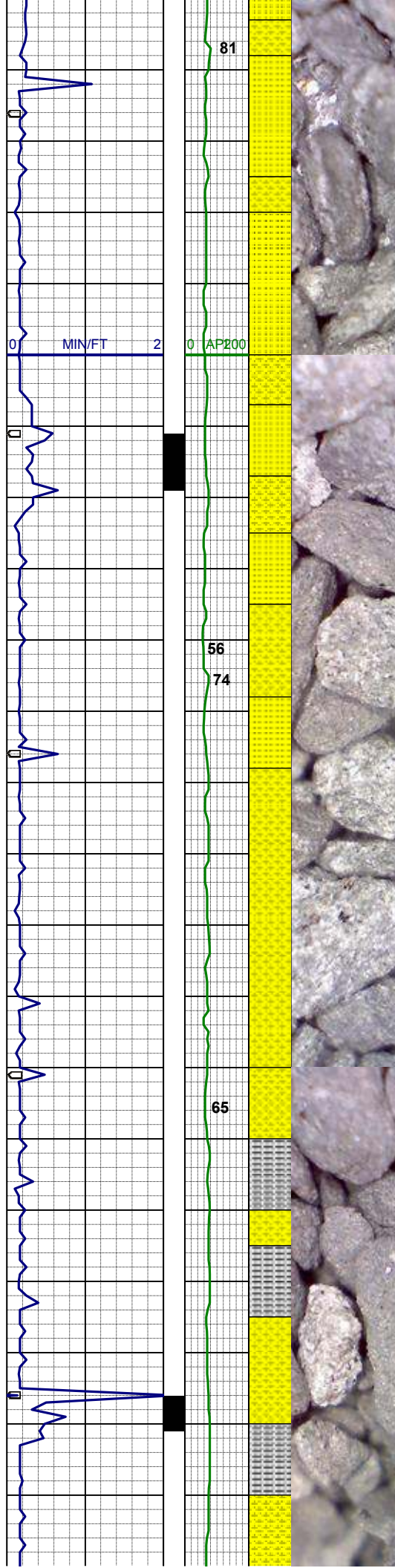
MD 3025'  
INC 10.4°  
AZI 222.3°  
TVD 3015.0'

WT 8.45 / VIS 27

SHYSS: lt- mgy, vf- fgr, trnsl- op,  
sbrndd- sbplty, p srt, vsft- sft, arg mtx,  
occ v arg, mod cmt, sl calc, slty, grdg-  
shysltst  
SS: wh- mgy, clr- trnsl, f-mgr, sbblky,  
wsrt, brit, arg-sil mtx, p cmt, sl calc, tr  
glau, sl mica

MD 3114'  
INC 10.3°  
AZI 221.6°  
TVD 3102.5'

SHYSS: lt- mgy, vf- fgr, trnsl- op,  
sbrndd- sbplty, p srt, vsft- sft, arg mtx,  
occ v arg, mod cmt, sl calc, slty, grdg-  
shysltst



shysltst  
SS: wh- mgy, clr- trnsl, f-mgr, sbblky,  
wsrt, brit, arg-sil mtx, p cmt, sl calc, tr  
glau, sl mica

MD 3204'  
INC 9.9°  
AZI 225.0°  
TVD 3191.1'

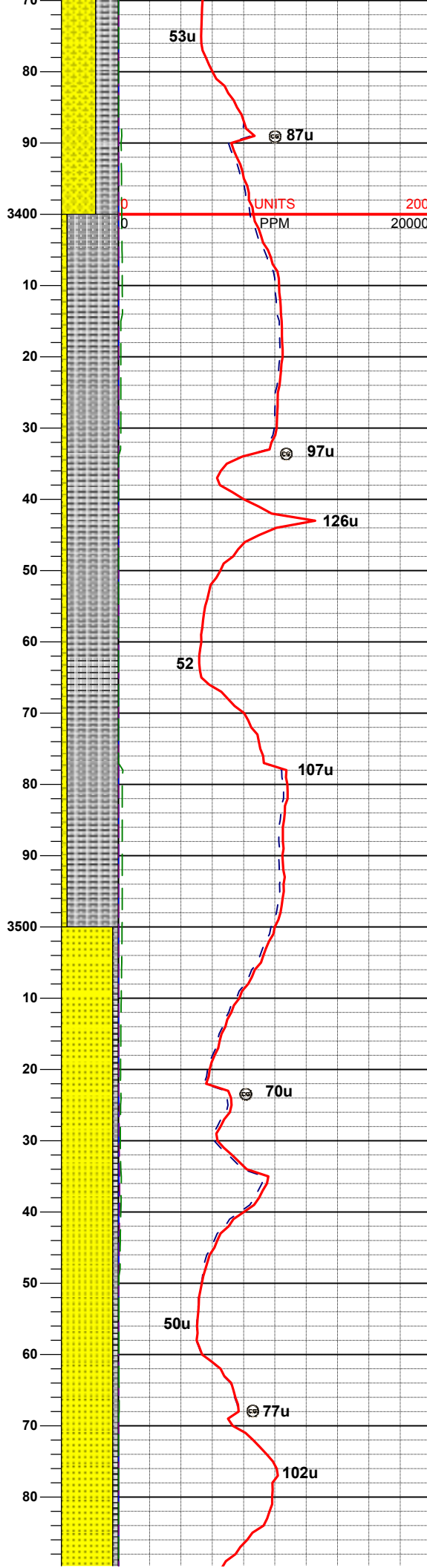
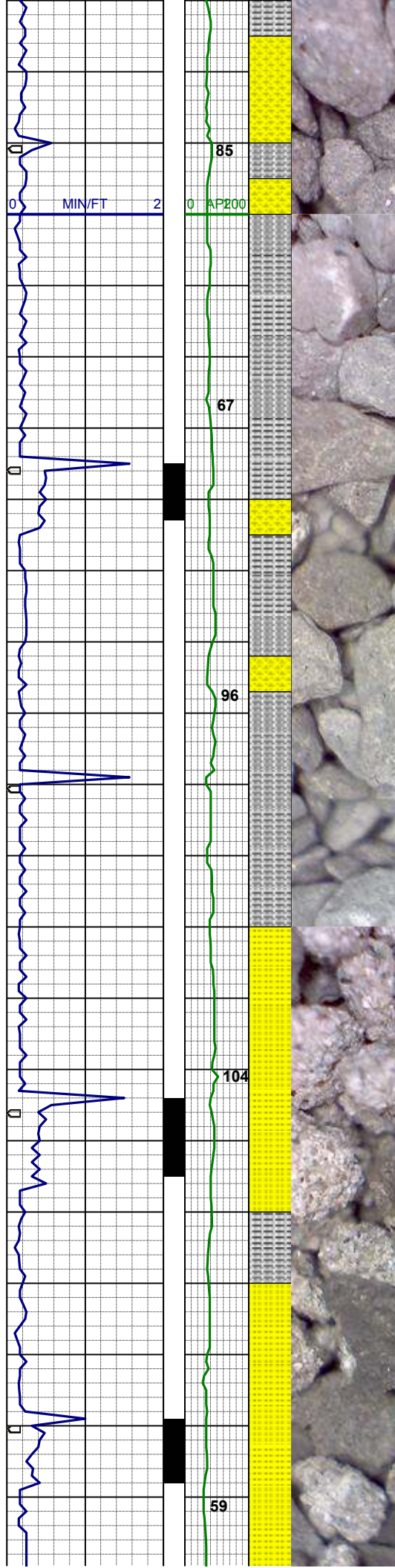
SHYSS: lt- mgy, vf- fgr, trnsl- op,  
sbrnnd- sbply, p srt, vsft- sft, arg mtx,  
occ v arg, mod cmt, sl calc, slty, grdg-  
shysltst  
SS: wh- mgy, clr- trnsl, f-vfgr, sbblky,  
wsrt, brit, arg-sil mtx, p cmt, sl calc, tr  
glau, sl mica

MD 3294'  
INC 10.1°  
AZI 225.7°  
TVD 3279.8'

WT 8.4 / VIS 26

SHYSS: lt- mgy, vf- fgr, trnsl- op,  
sbrnnd- sbply, p srt, vsft- sft, arg mtx,  
mod cmt, sl calc, slty, grdg- shysltst  
SLTYSH: lt-mgy, f-vfgr, sbblky-sbply,  
occ ply, sft-firm, arg, sl calc





MD 3384'  
INC 9.3°  
AZI 226.7°  
TVD 3368.5'

SLTYSH: lt-mgy, f-vfgr, sbblky-sbply,  
occ ply, sft-firm, arg, sl calc, tr pyr  
SHYSS: lt- mgy, vf- fgr, trns- op,  
sbrndd- sbply, p srt, vsft- sft, arg mtz,  
mod cmt, sl calc, slty, grdg- shysltst

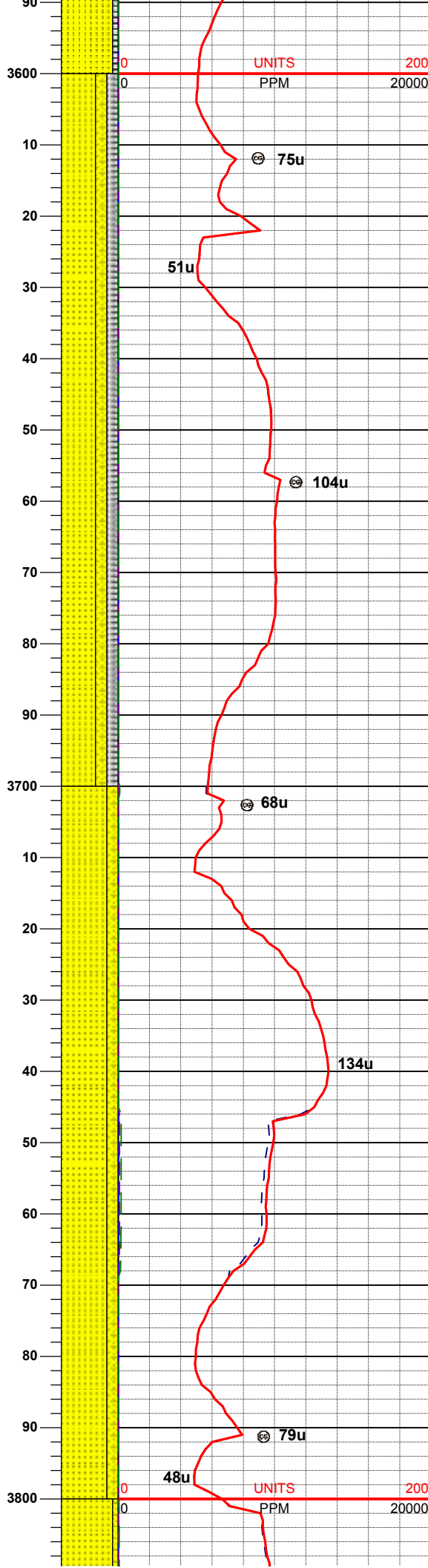
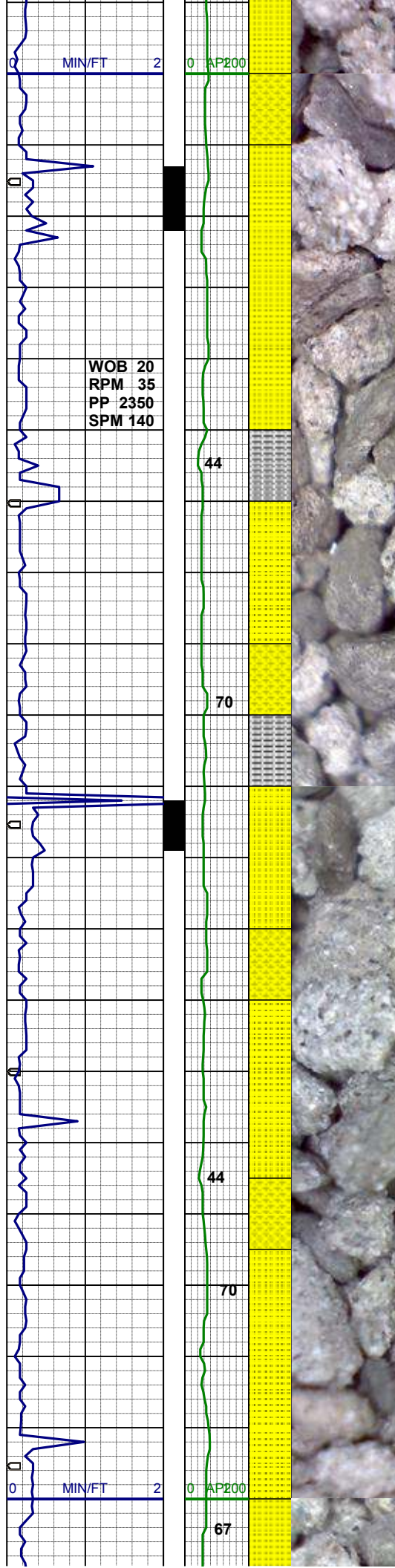
MD 3474'  
INC 8.9°  
AZI 228.8°  
TVD 3457.3'

WT 8.4 / VIS 25

SS: wh- ltgy, f-mgr, trns- op, sbrndd-  
sbang, bky-sbblky, p-mod srt, sft-  
firm, sl arg-sil mtz, sl calc  
SLTYSH: lt-mgy, f-vfgr, sbblky-sbply,  
occ ply, sft-firm, arg, sl calc, tr pyr

MD 3564'  
INC 10.2°  
AZI 234.4°  
TVD 3546.1'



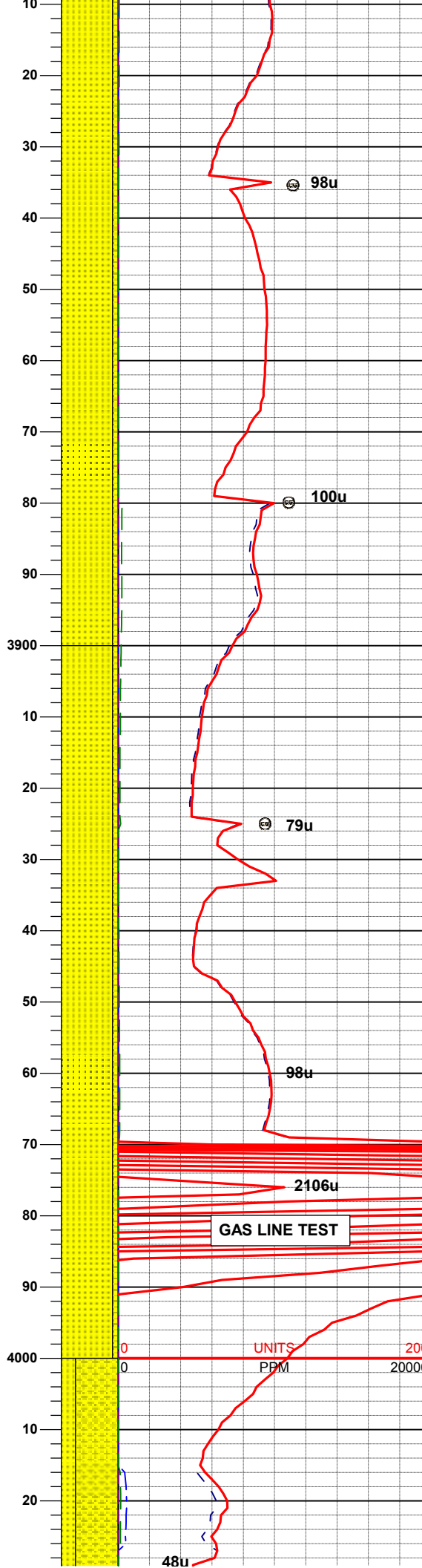
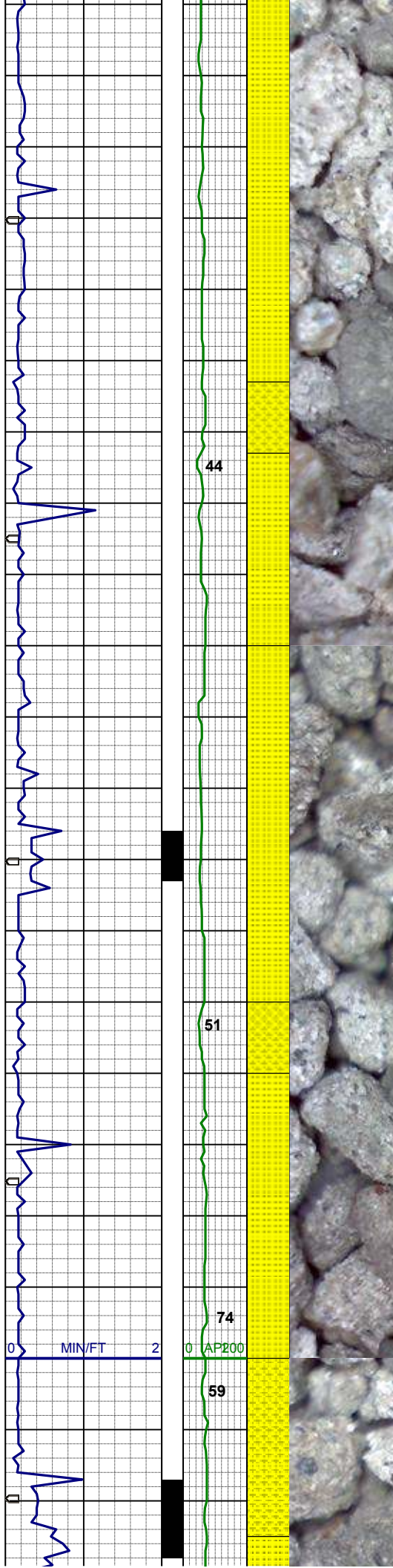


SS: wh- ltgy, f-mgr, trnsi- op, sbrndd-  
sbang, blky-sbblky, p-mod srt, sft-  
firm, sl arg-sil mtx, sl calc  
SLTYSH: lt-mgy, f-vfgr, sbblky-sbplty,  
occ plty, sft-firm, arg, sl calc, tr pyr  
SHYSS: lt- mgy, vf- fgr, trnsi- op,  
sbblky-sbplty, p srt, vsft- sft, arg mtx,  
mod cmt, sl calc, slty, grdg- shysltst

MD 3654'  
INC 12.4°  
AZI 229.0°  
TVD 3634.4'

MD 3743'  
INC 11.3°  
AZI 222.0°  
TVD 3721.5'

SS: wh- ltgy, f-mgr, trnsi- op, sbrndd-  
sbang, blky-sbblky, p-mod srt, sft-  
firm, sl arg-sil mtx, sl calc  
SHYSS: lt- mgy, tr dkgy, vf- fgr, trnsi-  
op, sbblky-sbplty, mod srt, sft-firm,  
arg mtx, mod cmt, sl calc, slty, grdg-  
shysltst, tr sltysh



MD 3833'  
INC 10.4°  
AZI 226.0°  
TVD 3809.9'

SS: wh- ltgy, f-mgr, trnsi- op, sbrndd-  
sbang, blk- sbbky, p- mod srt, sft-  
firm, sl arg- sil mt, sl calc, tr fos, sl  
mica, tr pyr  
SHYSS: lt- mgy, tr dkgy, vf- fgr, trnsi-  
op, sbbky- sbply, mod srt, sft- firm,  
arg mt, mod cmt, sl calc, slty, grdg-  
shysltst, tr sltysh

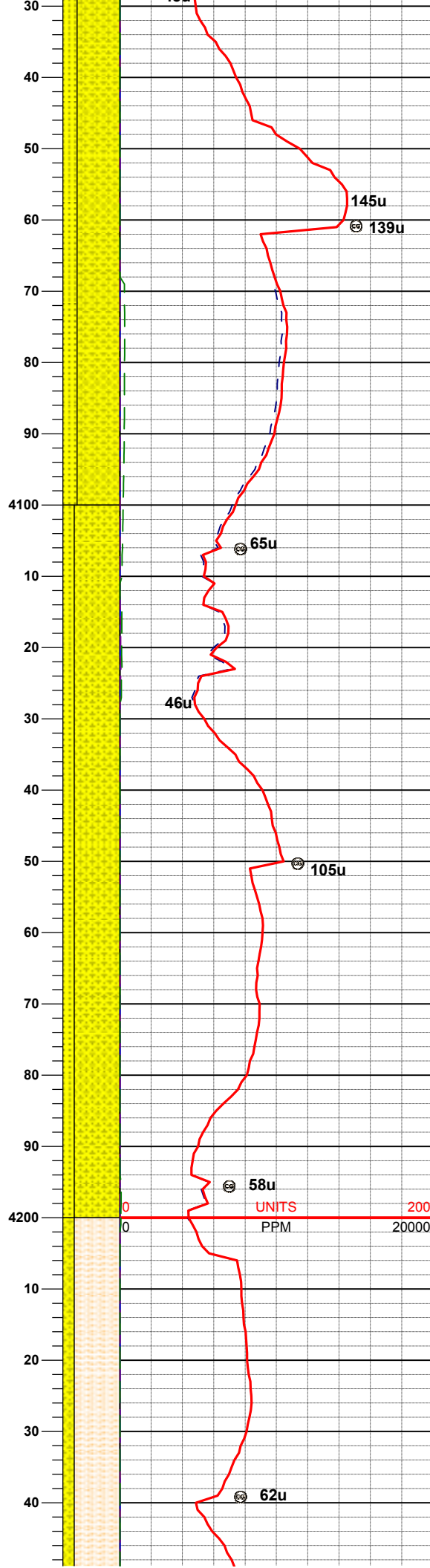
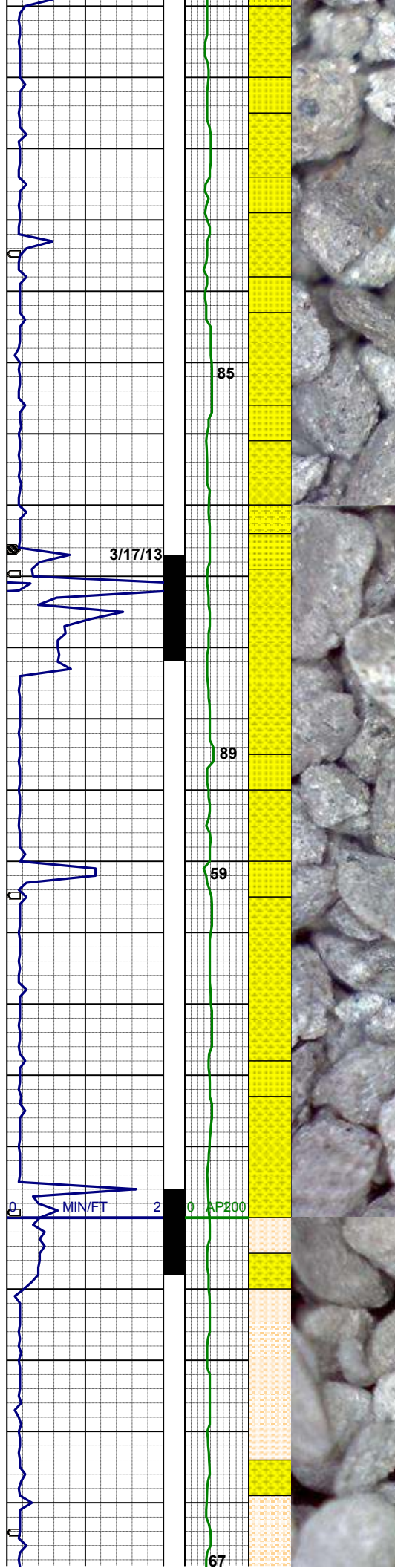
WT 8.4 / VIS 25

MD 3923'  
INC 10.3°  
AZI 223.5°  
TVD 3898.4'

SS: wh- ltgy, f- mgr, trnsi- op, sbrndd-  
sbang, blk- sbbky, p- mod srt, sft-  
firm, sl arg- sil mt, sl calc, tr fos, sl  
mica, tr pyr  
SHYSS: lt- mgy, tr dkgy, vf- fgr, trnsi-  
op, sbbky- sbply, mod srt, sft- firm,  
arg mt, mod cmt, sl calc, slty, grdg-  
shysltst, tr sltysh

MD 4013'  
INC 10.1°  
AZI 225.0°  
TVD 3987.0'





WT 8.5 / VIS 26

SHYSS: lt- mgy, tr dkgy, vf- fgr, trnsi-  
op, sbblky-sbplty, mod srt, sft-firm,  
arg mtz, mod cmt, sl calc, slty, grdg-  
shysltst, tr sltysh  
SS: wh- ltgy, f-mgr, trnsi- op, sbrndd-  
sbang, blky-sbblky, p-mod srt, sft-  
firm, sl arg-sil mtz, sl calc, tr fos, sl  
mica, tr pyr

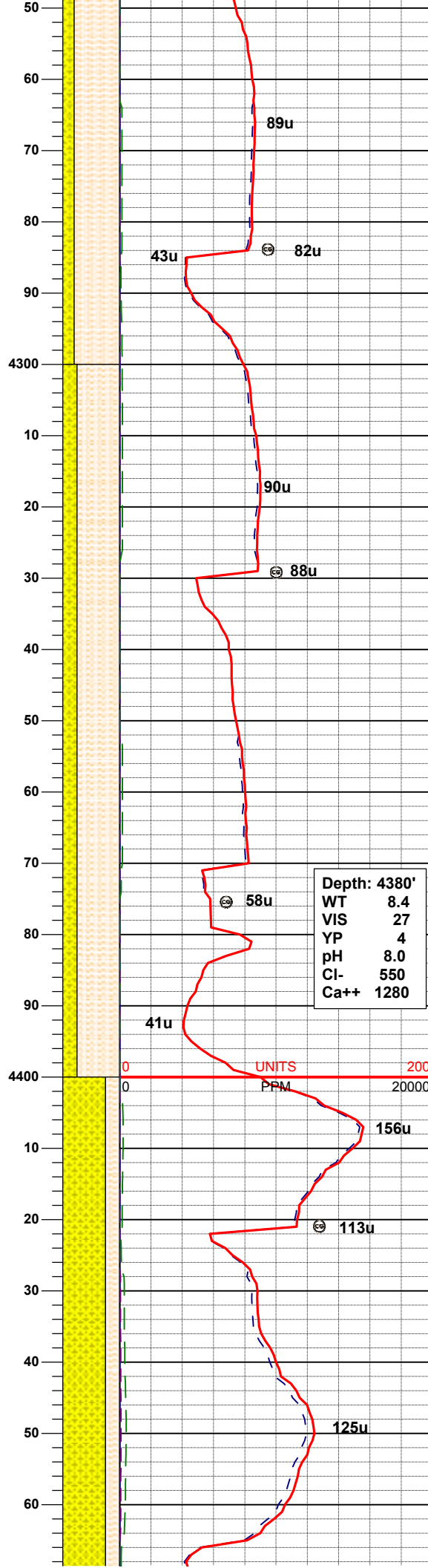
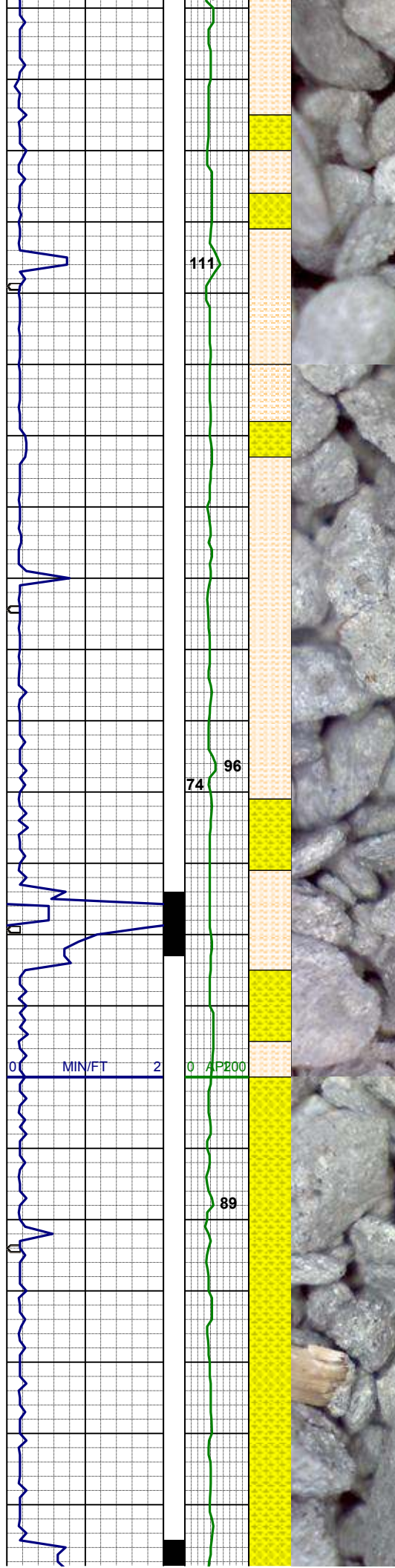
MD 4103'  
INC 10.6°  
AZI 226.7°  
TVD 4075.5'

SHYSS: lt- mgy, tr dkgy, vf- fgr, trnsi-  
op, sbblky-sbplty, mod srt, sft-firm,  
arg mtz, mod cmt, sl calc, slty, grdg-  
shysltst, tr sltysh, ty glauc  
SS: wh- ltgy, f-mgr, trnsi- op, sbrndd-  
sbang, blky-sbblky, p-mod srt, sft-  
firm, sl arg-sil mtz, sl calc, tr fos, sl  
mica, tr pyr

MD 4193'  
INC 9.1°  
AZI 227.9°  
TVD 4164.2'

WT 8.4 / VIS 25





SHSLTST: lt-modgy, vf-fgr, sbblky-sbply, w srt, sft-firm, arg- sl sil mtx, sl calc, abnt fos, tr pyr  
SHYSS: lt- mgy, tr dkgy, vf- fgr, trnslop, sbblky-sbply, mod srt, sft-firm, arg mtx, mod cmt, sl calc, slty, tr ss

MD 4283'  
INC 8.4°  
AZI 231.1°  
TVD 4253.1'

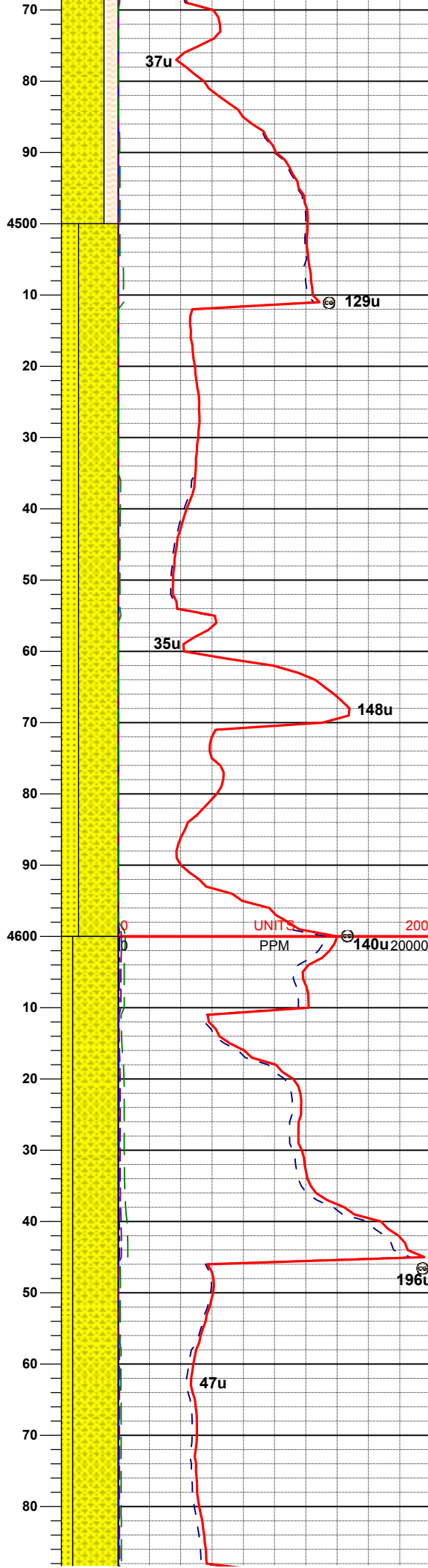
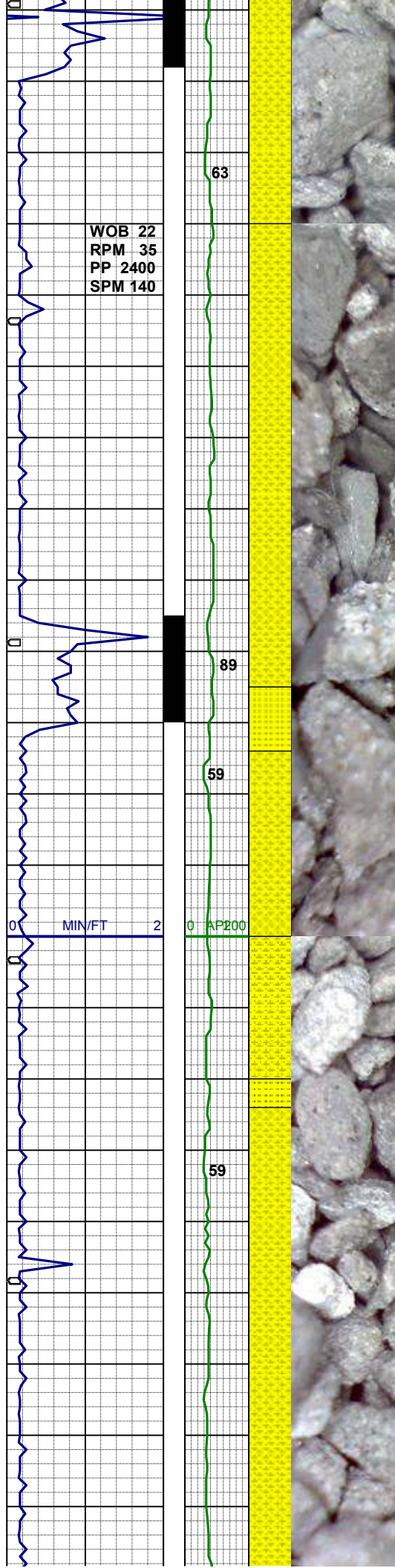
SHSLTST: lt-modgy, vf-fgr, sbblky-sbply, w srt, sft-firm, arg- sl sil mtx, sl calc, abnt fos, tr pyr  
SHYSS: lt- mgy, tr dkgy, vf- fgr, trnslop, sbblky-sbply, mod srt, sft-firm, arg mtx, mod cmt, sl calc, slty, tr ss

MD 4372'  
INC 7.5°  
AZI 227.1°  
TVD 4341.3'

Depth: 4380'  
WT 8.4  
VIS 27  
YP 4  
pH 8.0  
Cl- 550  
Ca++ 1280

SHYSS: lt- mgy, tr dkgy, vf- fgr, trnslop, sbblky-sbply, mod srt, sft-firm, arg mtx, mod cmt, sl calc, slty, tr sltysh  
SHSLTST: lt-modgy, vf-fgr, sbblky-sbply, w srt, sft-firm, arg- sl sil mtx, sl calc, abnt fos, tr pyr

MD 4462'  
INC 7.7°  
AZI 228.6°  
TVD 4430.5'



WT 8.4 / VIS 26

SHYSS: lt- mgy, tr dkgy, trns- op, vf-  
fgr, sbbiky-sbply, mod srt, sft- mfirm,  
arg mtx, mod cmt, sl calc, slty, rr v  
calc frag, grdg- sltysh  
SS: wh- ltgy, clr- trns- f-mgr, sbrndd-  
sbbiky p-mod srt, firm, brittle, sil mtx,  
sl calc, tr glau

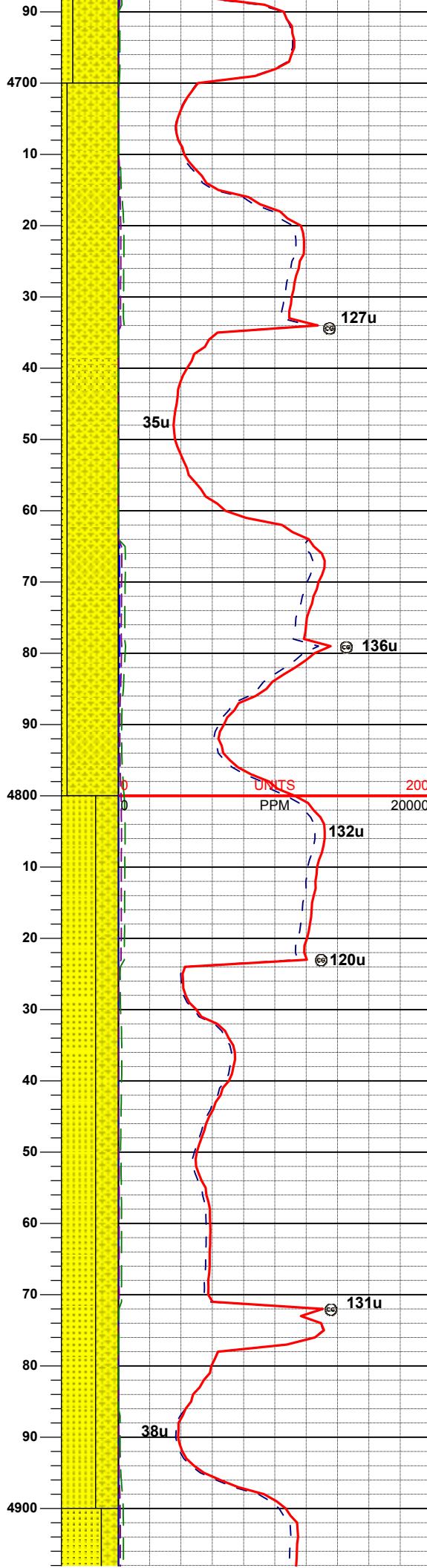
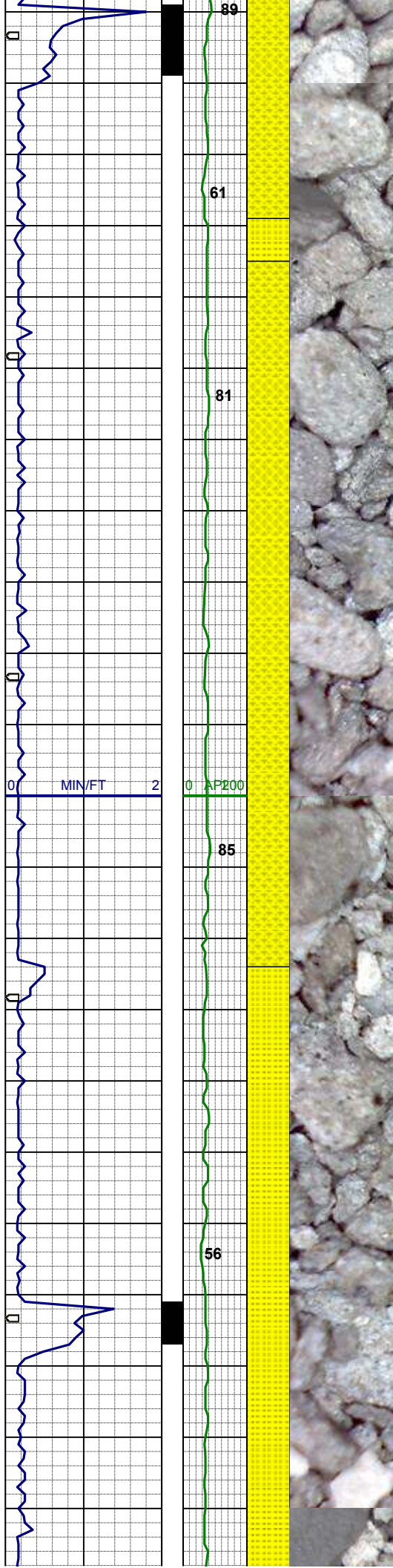
MD 4552'  
INC 7.6°  
AZI 230.4°  
TVD 4519.7'

MD 4642'  
INC 8.2°  
AZI 225.1°  
TVD 4608.8'

SHYSS: lt- mgy, trns- op, vf- fgr,  
sbrndd- sbbiky, occ sbply, mod srt,  
sft- mfirm, arg mtx, mod cmt, sl calc,  
slty, tr pyr, grdg- sltysh  
SS: wh- ltgy, clr- trns- f-mgr, sbrndd-  
sbbiky p-mod srt, firm, brittle, sil mtx,  
sl calc, tr pyr

WT 8.5 / VIS 26





MD 4732'  
INC 6.7°  
AZI 232.3°  
TVD 4698.1'

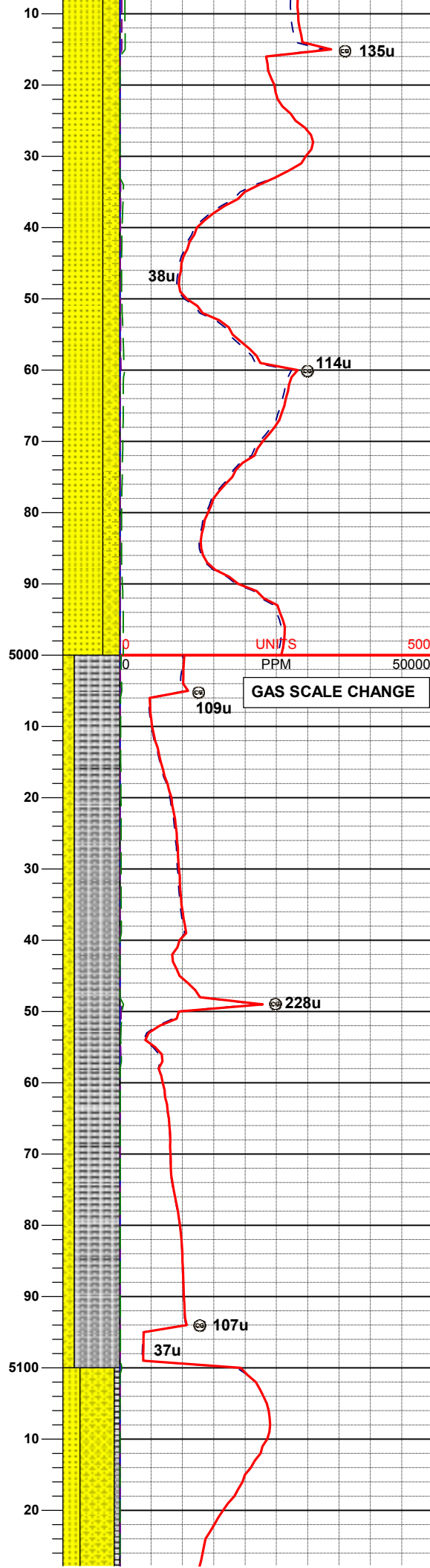
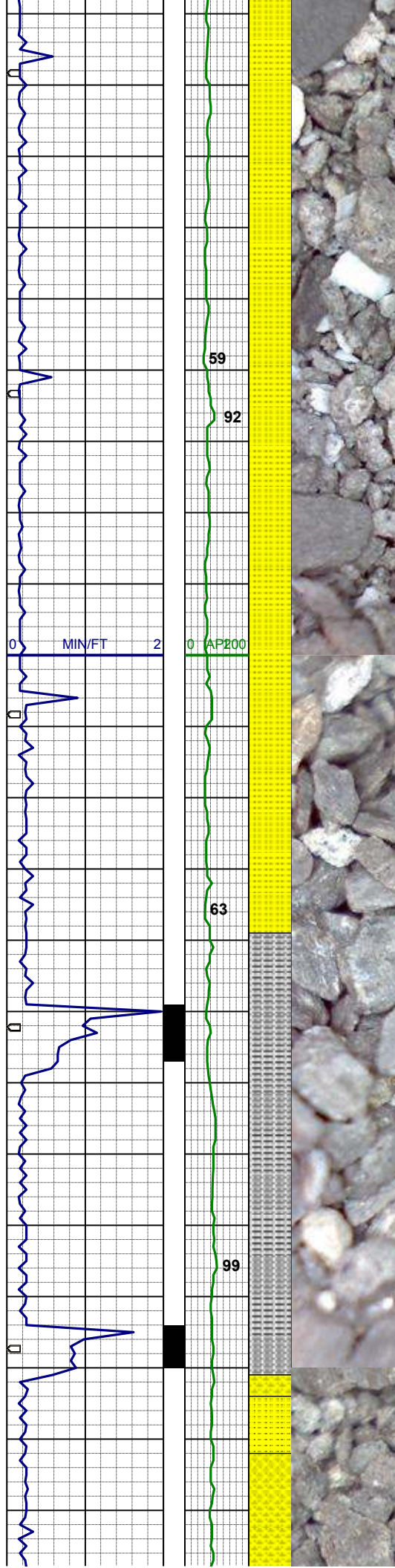
SHYSS: lt- mgy, trnsl- op, vf- fgr, sbrndd- sbbiky, occ sbply, mod srt, sft- mfirm, arg mtx, mod cmt, sl calc, slty, tr pyr, grdg- sltysh  
SS: wh- ltgy, clr- trnsl, f-mgr, sbrndd- sbbiky p-mod srt, firm, brittle, sil mtx, sl calc, tr pyr

MD 4822'  
INC 6.1°  
AZI 225.8°  
TVD 4787.5'

WT 8.4 / VIS 25

SS: wh- mgy, trnsl- op, sme clr, f-mgr, sbrndd- sbbiky, p-mod srt, brit, sil mtx, sl calc  
SHYSS: lt- mgy, occ tan, trnsl- op, vf- fgr, sbrndd- sbbiky, occ sbply, mod srt, sft- mfirm, arg mtx, mod cmt, sl calc, slty, abnt bent, grdg- sltysh





MD 4912'  
INC 6.3°  
AZI 228.3°  
TVD 4877.0'

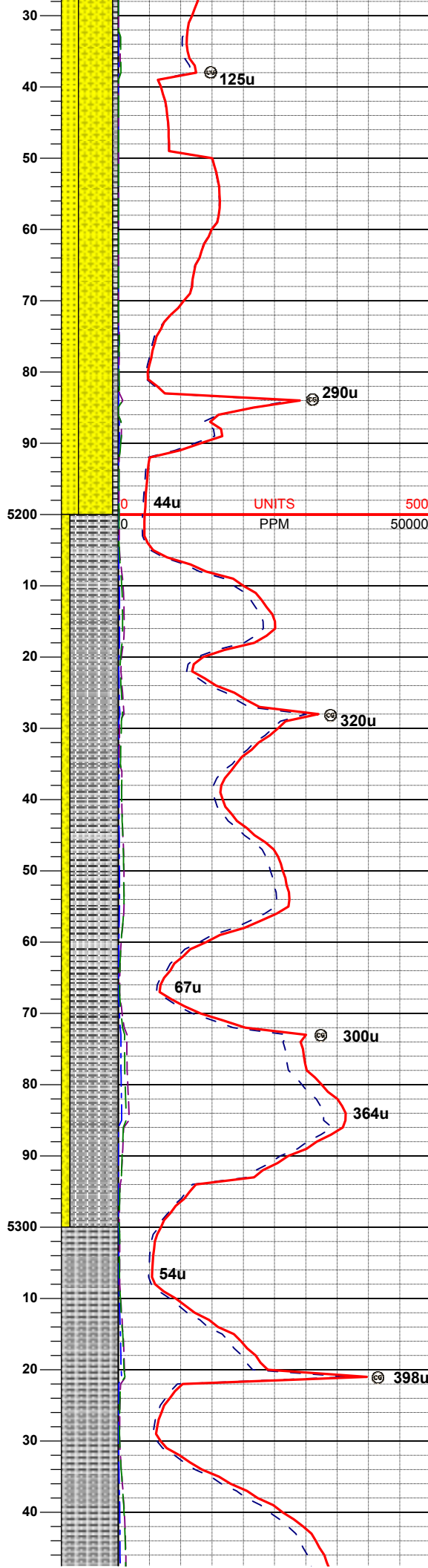
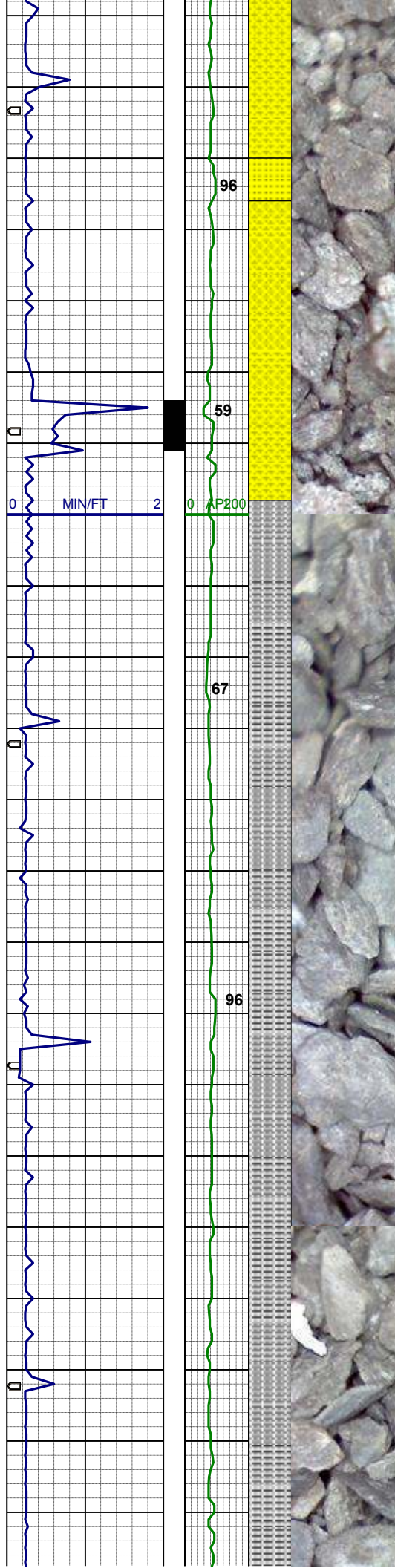
SS: wh- mgy, trns- op, sme clr, f-mgr, sbrndd-sbblky, p-mod srt, brit, sil mtx, sl calc  
SHYSS: lt- mgy, occ tan, trns- op, vf- fgr, sbrndd- sbblky, occ sbply, mod srt, sft- mfirm, arg mtx, mod cmt, sl calc, slty, abnt bent, grdg- sltysh

MD 5001'  
INC 5.7°  
AZI 226.0°  
TVD 4965.5'

GAS SCALE CHANGE

SLTYSH: lt-mgy, sbblky-sbply, firm, gt- slty tex, sl calc, occ calc frag, occ pyr, sdy ip, tr bent, grdg- shyss

MD 5092'  
INC 6.1°  
AZI 222.8°  
TVD 5056.0'



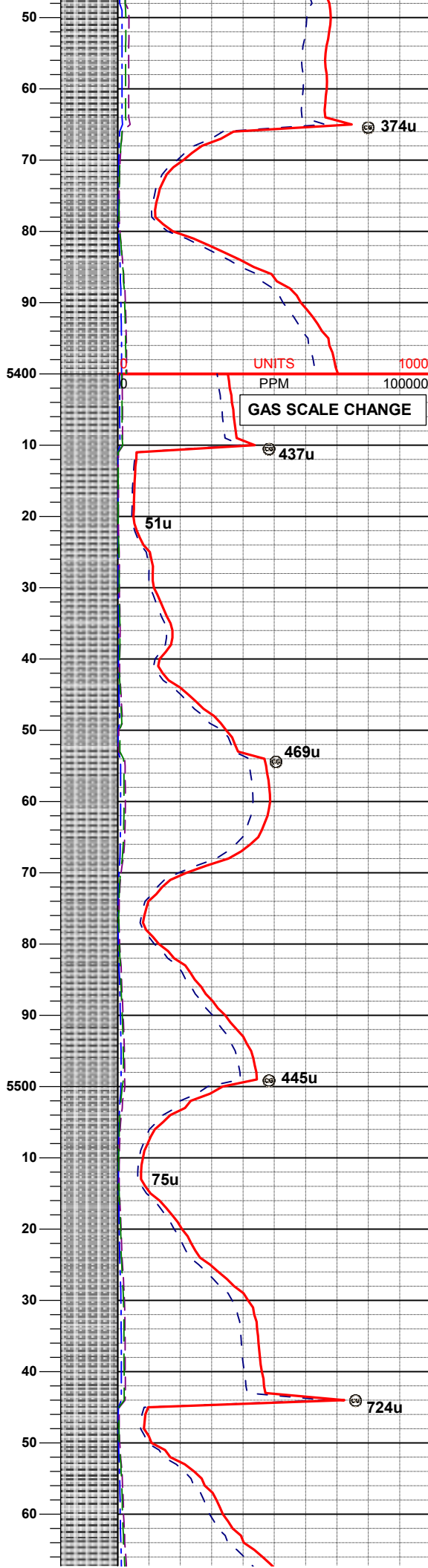
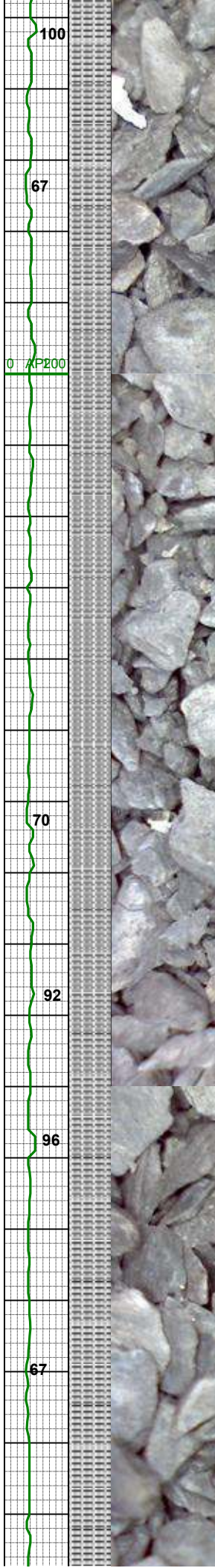
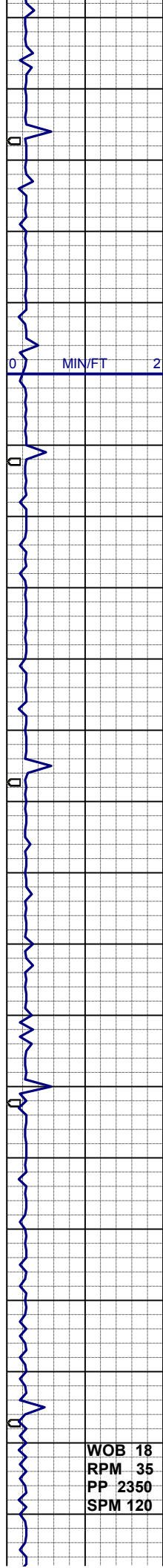
SHYSS: lt- mgy, trnsl- op, vf- fgr,  
sbbiky- sbply, firm, mod srt, sil mtx,  
mod cmt, sl calc, slty, tr pyr, occ bent,  
grdg- sltysh  
SS: wh- mgy, trnsl- op, occ clr ,f-mgr,  
sbrndd-sbbiky p-mod srt, frii, sil mtx,  
sl calc, tr pyr

MD 5181'  
INC 5.4°  
AZI 224.2°  
TVD 5144.6'

SLTYSH: lt-mgy, gybrn, pred sbply,  
firm, gt tex, sl calc, occ calc frag, occ  
pyr, sdy ip, grdg- shyss

MD 5271'  
INC 4.9°  
AZI 228.5°  
TVD 5234.2'





SLTYSH: lt-mgy- gybrn, pred sbply,  
firm, gt tex, sl calc, occ calc frag, occ  
pyr, sdy ip, grdg- shyss

MD 5361'  
INC 4.0°  
AZI 219.5°  
TVD 5323.9'

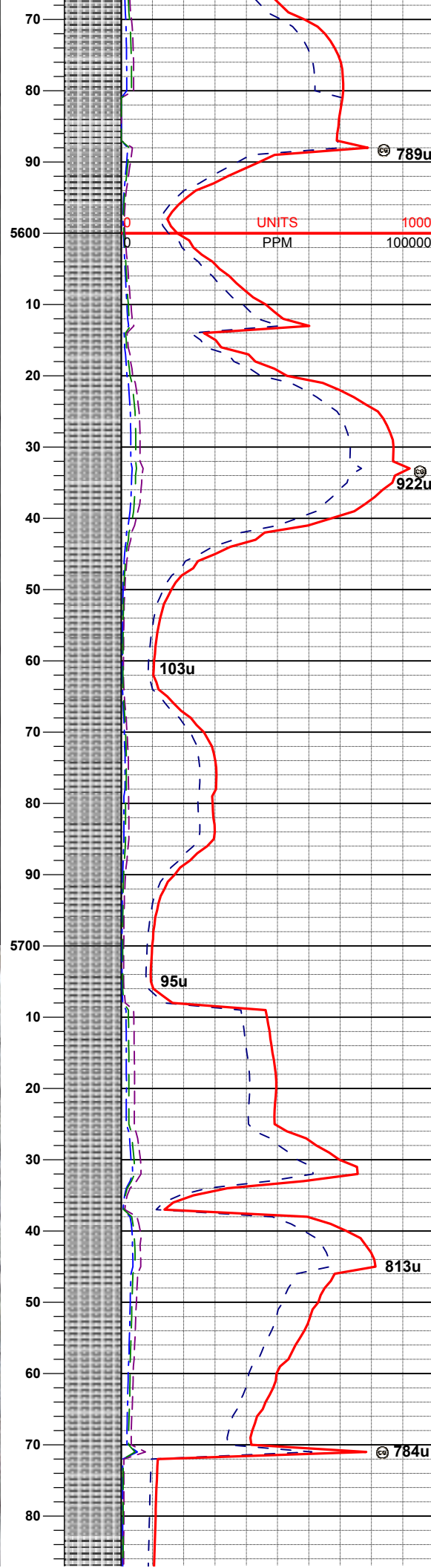
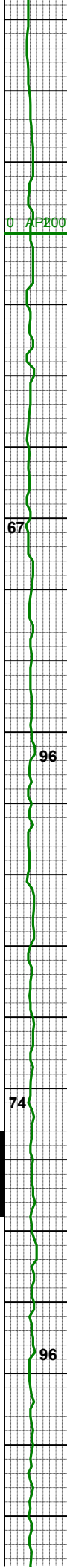
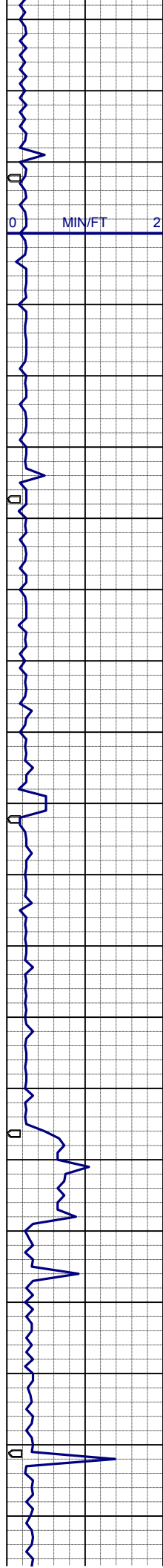
SLTYSH: m- dkgy- gybrn, sbblky-  
sbply, firm, rthy- gt tex, sl calc, occ  
calc frag, occ pyr, sl sdy ip, tr bent,  
grdg- shyss

MD 5451'  
INC 3.3°  
AZI 210.9°  
TVD 5413.7'

SLTYSH: m- dkgy- gybrn, sbblky-  
sbply, firm, rthy- gt tex, sl calc, occ  
calc frag, occ pyr, sl sdy ip, grdg-  
shyss

MD 5541'  
INC 2.6°  
AZI 199.6°  
TVD 5503.6'

WOB 18  
RPM 35  
PP 2350  
SPM 120



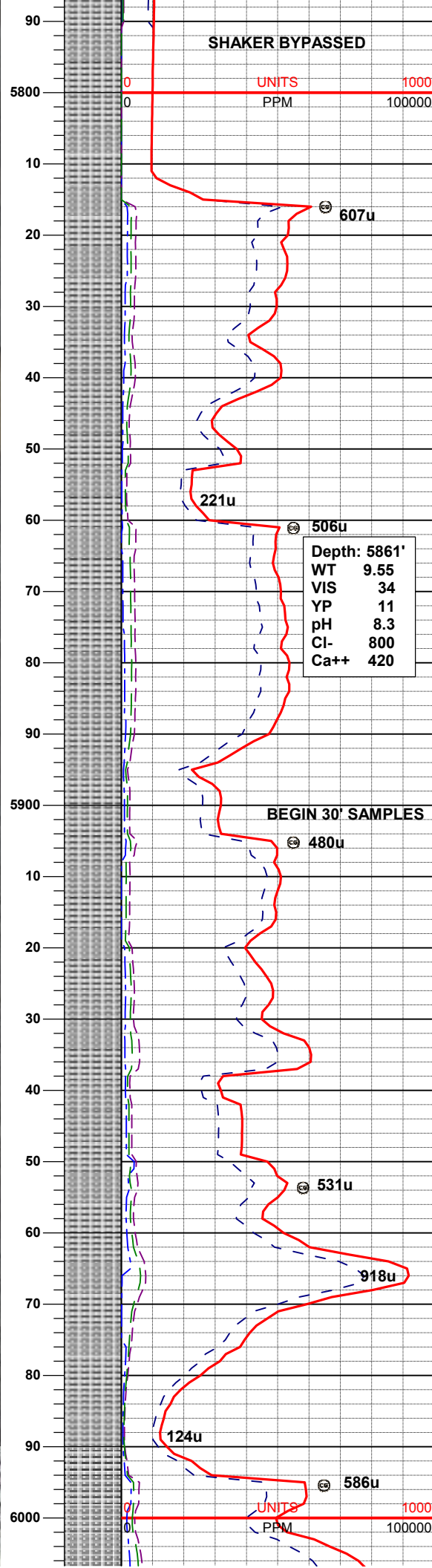
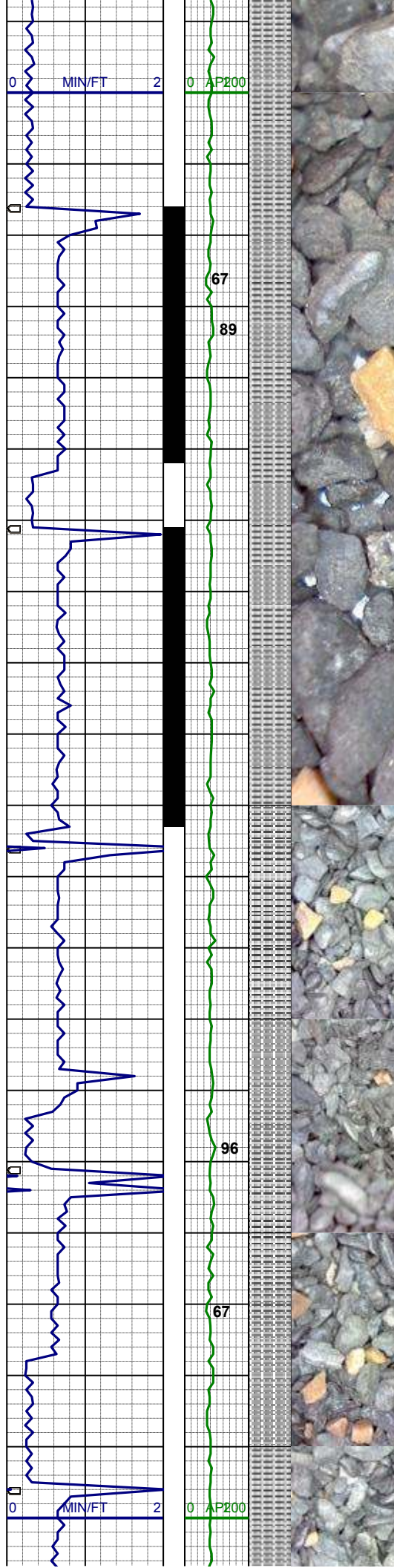
MD 5631'  
INC 2.2°  
AZI 183.3°  
TVD 5593.5'

SLTYSH: m- dkgy- gybrn, sbblky-  
sbplty, firm, rthy- gt tex, sl calc, occ  
calc frag, occ pyr, tr fos frag, sl sdy ip,  
grdg- shysltst

MD 5720'  
INC 1.7°  
AZI 176.8°  
TVD 5682.5'

SLTYSH: m- dkgy- gybrn, sbrndd-  
sbplty, firm, rthy- gt tex, sl calc, occ  
calc frag, sdy ip, grdg- shyss





MD	5810'
INC	0.4°
AZI	182.8°
TVD	5772.5'

SLTYSH: m- dkgy- gybrn, sbrndd-  
sbplty, firm, rthy- gt tex, sl calc, sdy ip,  
grdg- shyss, ~1% wh, clr- trnsl mgr ss  
w/ glau

MD	5855'
INC	3.6°
AZI	352.4°
TVD	5817.5'

MD	5900'
INC	8.8°
AZI	357.3°
TVD	5862.2'

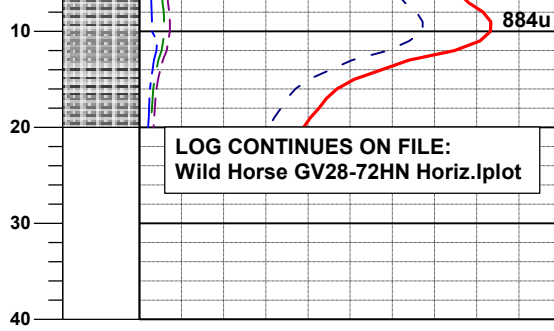
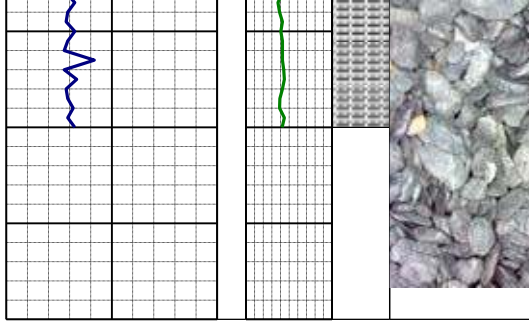
SLTYSH: m- dkg- gybrn, sbrndd-  
sbply, firm, rthy- gt tex, sl calc, sdy ip,  
grdg- shyss

MD	5945'
INC	13.7°
AZI	357.8°
TVD	5906.3'

SLTYSH: m- dkgy, sbplty-plty, sft-  
firm, rthy- gt tex, slty, arg-sil mtx, sl  
calc, sdy ip, grdg-shysltst, sl mica, tr  
ss, tr fos

MD	5990'
INC	17.1°
AZI	356.4°
TVD	5949.7'

SLTYSH: m- dkgy, sbply-pty, sft-  
firm, rthy- gt tex, slty, arg-sil mtx, sl  
calc, sdy ip, grdg-shysltst, sl mica, tr s



ss, tr fos

THANK YOU FOR CHOOSING  
COLUMBINE LOGGING, INC.