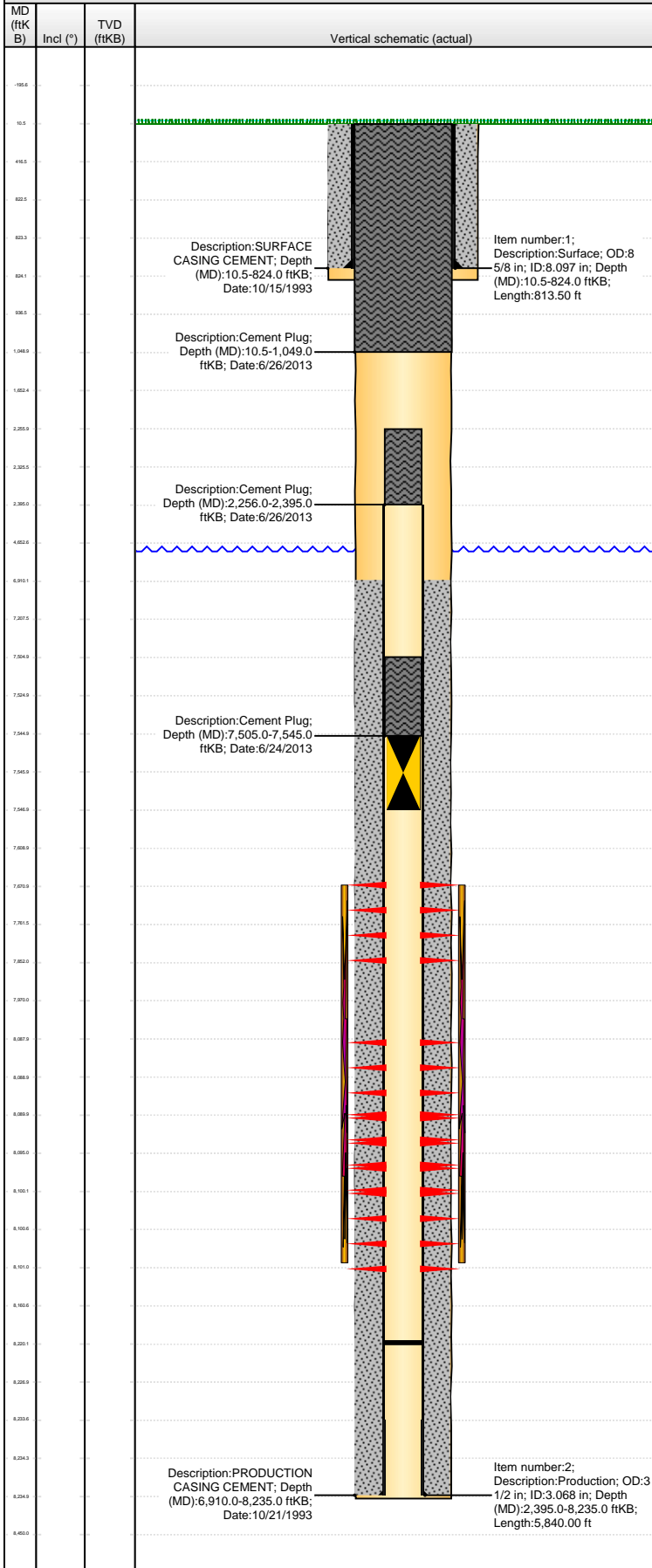


**Well Name: GARCIA MD01-12**

VERTICAL - ORIGINAL HOLE, 7/8/2013 11:21:01 AM



## Well Header

API	Business Unit	District	Well Config
05-013-06448	WATTENBERG	15	VERTICAL
Original KB Elevation (ft)	KB - GL / MSL (ftKB)	Spud Date	P & A Date
5,164.50	10.50	10/14/1993	6/27/2013

Comment  
REPERF CDL 7/9/04 BUT NO FRAC

Directions To Well

## Congressional Location

Quarter 1	Quarter 2	Quarter 3	Quarter 4	Section	Township	Twnshp N...	Range	Rng E/W Dir
		NW	SW	1	1	S	69	W

## Bottom Hole Location

North-South Distance (ft)	From N or S Line	East-West Distance (ft)	From E or W Line
---------------------------	------------------	-------------------------	------------------

## Plug Back Total Depths

Date	Depth (ftKB)	Method	Com
10/21/1993	8,220.0	TAG	

## Wellbore Sections

Section Des	Size (in)	Act Top (ftKB)	Act Btm (ftKB)
SURFACE	12 1/4	10.5	840.0
PRODUCTION	7 7/8	840.0	8,253.0

## Zone Statuses

Zone Name	Status Date	Status	Job
NB-CD			
NIOBRARA	12/15/1993	PR	DRILLING/COMPLETION - ORIGINAL, 10/14/1993 00:00
NIOBRARA	6/27/2013	P&A	ABANDON WELL, 6/21/2013 06:00
CODELL	12/15/1993	PR	DRILLING/COMPLETION - ORIGINAL, 10/14/1993 00:00
CODELL	6/27/2013	P&A	ABANDON WELL, 6/21/2013 06:00

## Casing Strings

### Surface, 824.0ftKB

Casing Description	Run Date	OD (in)	Wt/Len (l...)	Grade	Top (ftKB)	MD (ftKB)
Surface	10/15/1993	8 5/8	24.00		10.5	824.0

### Production, 8,235.0ftKB

Casing Description	Run Date	OD (in)	Wt/Len (l...)	Grade	Top (ftKB)	MD (ftKB)
Production	10/21/1993	3 1/2	7.70	M-75	10.5	8,235.0

## Cement

Description	Top Depth (ftKB)	Bottom Depth (ftKB)
SURFACE CASING CEMENT	10.5	824.0
Description	Top Depth (ftKB)	Bottom Depth (ftKB)
PRODUCTION CASING CEMENT	6,910.0	8,235.0
Description	Top Depth (ftKB)	Bottom Depth (ftKB)
Cement Plug	7,505.0	7,545.0
Description	Top Depth (ftKB)	Bottom Depth (ftKB)
Cement Plug	2,256.0	2,395.0
Description	Top Depth (ftKB)	Bottom Depth (ftKB)
Cement Plug	10.5	1,049.0

## Tubing Components

Item Des	OD (in)	Wt (lb/ft)	Grade	Jts	Len (ft)	Btm (ftKB)	Btm (TVD) (ftKB)
----------	---------	------------	-------	-----	----------	------------	------------------

## Perforation Data

Zone	Bnch/St g	Entered Shot Total	Top (ftKB)	Btm (ftKB)	Date
NIOBRARA, ORIGINAL HOLE		8	7,671.00	7,852.00	10/27/1993
CODELL, ORIGINAL HOLE		6	8,088.00	8,101.00	10/27/1993
CODELL, ORIGINAL HOLE		40	8,090.00	8,100.00	7/9/2004

## Stimulations & Treatments

Date	Zone	Primary Job Type
10/28/1993	NB-CD, ORIGINAL HOLE	DRILLING/COMPLETION - ORIGINAL
Technical Result	Tech Result Details	Tech Result Note
Comment		

## Other In Hole

Run Date	Des	OD (in)	Top (ftKB)	Btm (ftKB)
6/24/2013	Cast Iron Bridge Plug	2 3/4	7,545.0	7,547.0

## Logs

Date	Type	Top (ftKB)	Btm (ftKB)
10/21/1993	COMPENSATED DENSITY	7,300.0	819.0

**Well Name: GARCIA MD01-12**

VERTICAL - ORIGINAL HOLE, 7/8/2013 11:21:02 AM

## Logs

Date	Type	Top (ftKB)	Btm (ftKB)
10/21/1993	INDUCTION	7,300.0	8,243.0
10/26/1993	CBL/CCL/GR	6,750.0	8,194.0
8/30/2012	GYRO	10.0	8,000.0

