



**RADIAL BOND LOG & V.D.L
GAMMA-RAY & C.C.L.**

Pioneer Energy Services

Company ENCANA OIL & GAS
Well ARISTOCRAT ANGUS #0-8-3
Field WATTENBERG
County WELD
State COLORADO

Company ENCANA OIL & GAS
Well ARISTOCRAT ANGUS #0-8-3
Field WATTENBERG
County WELD State COLORADO

Location: API #: 05123343470000
Permanent Datum GL Elevation 4806'
Log Measured From GL
Drilling Measured From KB
Other Services
NONE
Elevation
K.B. NA
D.F. NA
G.L. 4806'

SEC 3 TWP 3N RGE 65W

Date 5-31-13

Run Number	1		
Depth Driller	7849'		
Depth Logger	7824'		
Bottom Logged Interval	7812'		
Top Log Interval	2680'		
Open Hole Size	7 7/8"		
Type Fluid	WATER		
Density / Viscosity			
Max. Recorded Temp.	274		
Estimated Cement Top	3170		
Time Well Ready	ROA		
Time Logger on Bottom	AM		
Equipment Number	24		
Location	FT. MORGAN		
Recorded By	JOHN HOLLIS		
Witnessed By	TOM MAJORS		

Borehole Record				Tubing Record			
Run Number	Bit	From	To	Size	Weight	From	To
Casing Record							
Surface String				Size	Wgt/Ft	Top	Bottom
Prot. String							
Production String				4.5"	11.6#		
Liner							

<<< Fold Here >>>

All interpretations are opinions based on inferences from electrical or other measurements and we cannot and do not guarantee the accuracy or correctness of any interpretation, and we shall not, except in the case of gross or willful negligence on our part, be liable or responsible for any loss, costs, damages, or expenses incurred or sustained by anyone resulting from any interpretation made by any of our officers, agents or employees. These interpretations are also subject to our general terms and conditions set out in our current Price Schedule.

Comments

S.O. 2-203947
NO OPEN-HOLE LOG
E
N O X S
W

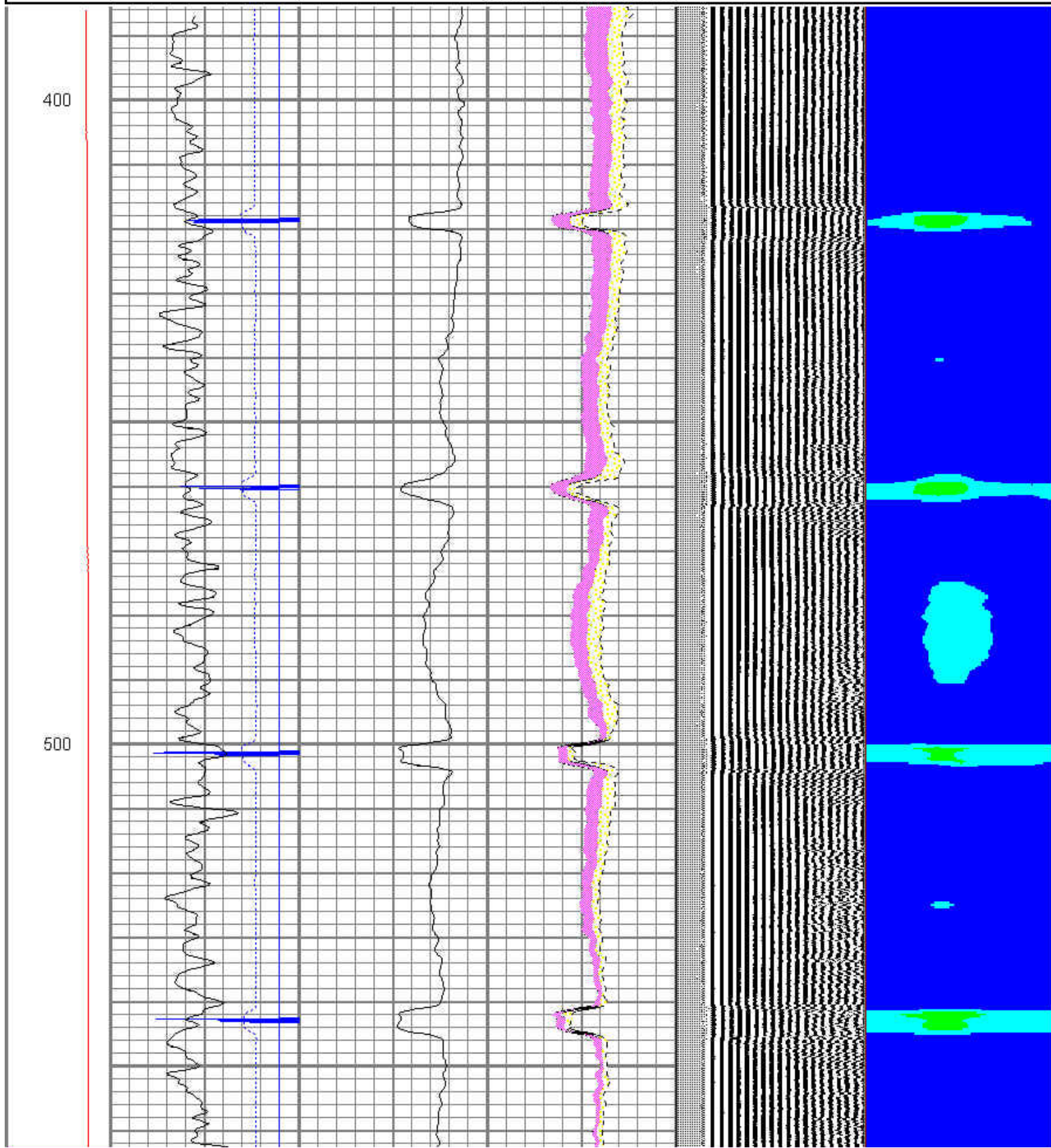
WCR 38 & WCR 39 EAST 1.7 SOUTH 1 MILE EAST 3/4 INTO

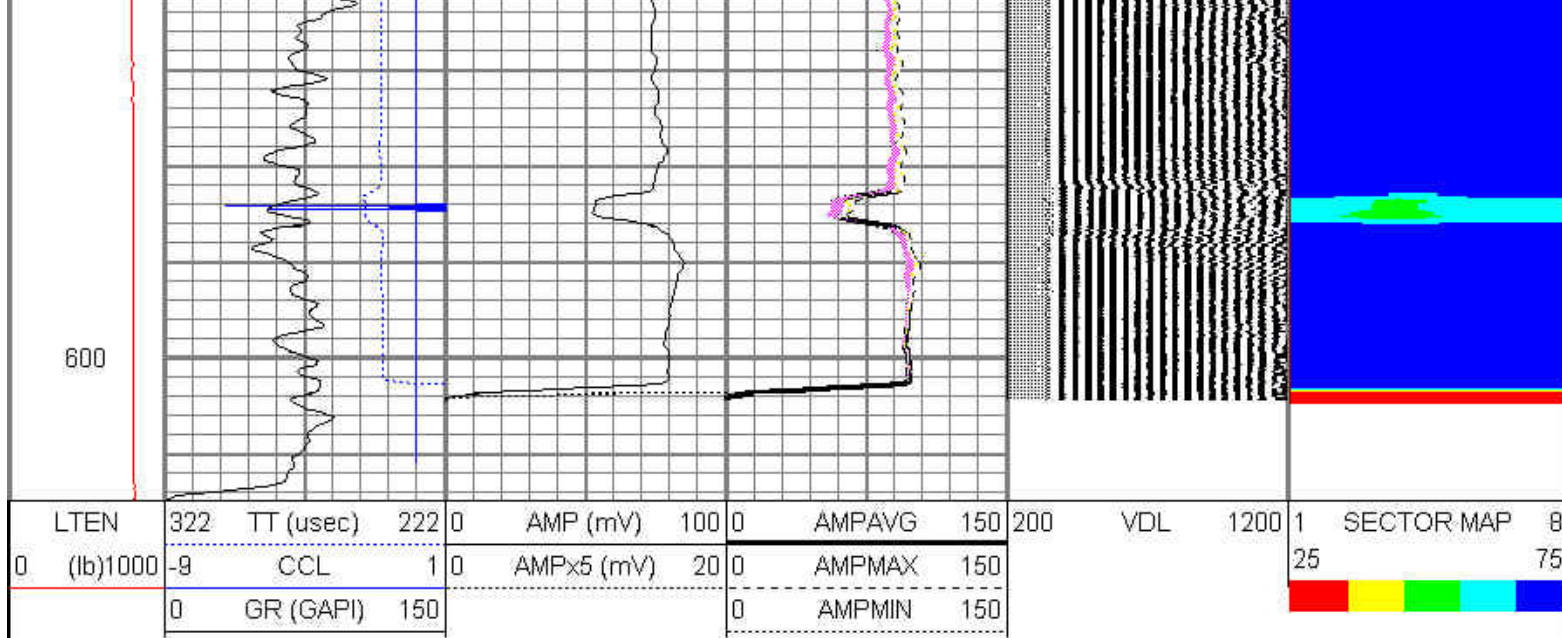
THANK YOU FOR USING PIONEER ENERGY SERVICES

Sensor	Offset (ft)	Schematic	Description	Len (ft)	OD (in)	Wt (lb)

Database File: aristocrate angus 0-8-3 encana.db
 Dataset Pathname: pass2
 Presentation Format: scbl02
 Dataset Creation: Fri May 31 07:25:02 2013 by Log SCH 120430
 Charted by: Depth in Feet scaled 1:240

LTEN	322	TT (usec)	222	0	AMP (mV)	100	0	AMPAVG	150	200	VDL	1200	1	SECTOR MAP	8
0	(lb)1000	-9	CCL	1	0	AMPx5 (mV)	20	0	AMPMAX	150			25		75
	0	GR (GAPI)	150					0	AMPMIN	150					





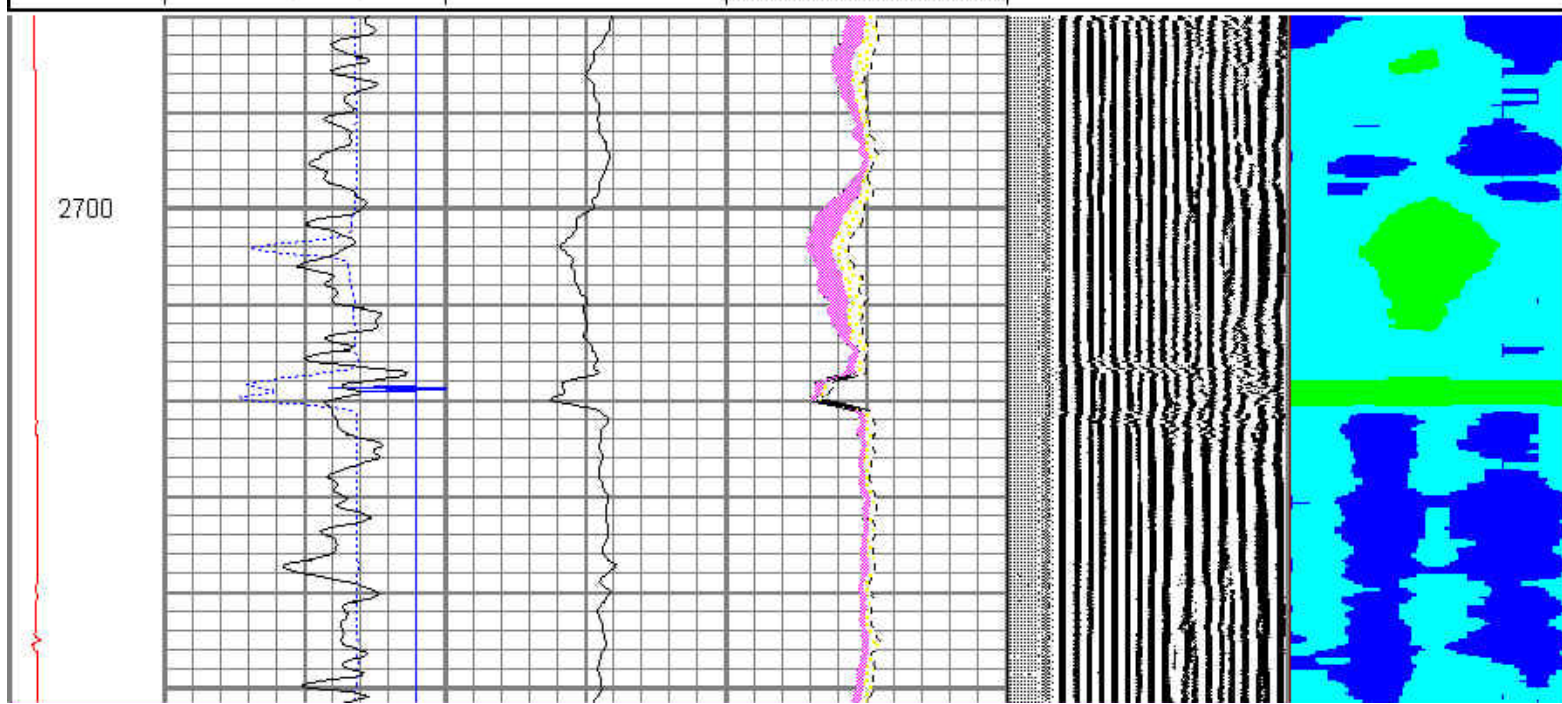
FREE PIPE PASS



MAIN PASS

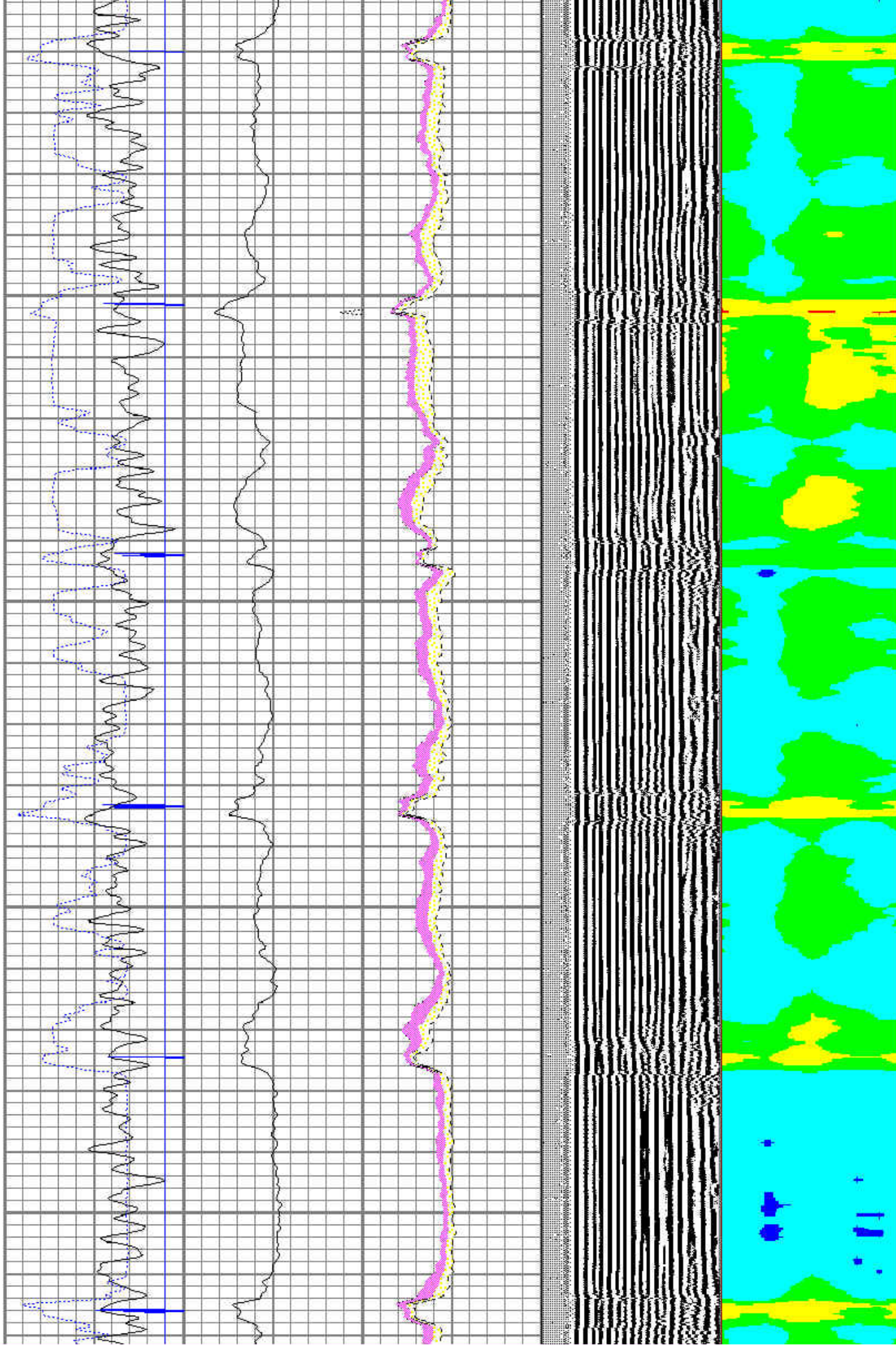
Database File: aristocrate angus 0-8-3 encana.db
 Dataset Pathname: pass8
 Presentation Format: schl02
 Dataset Creation: Fri May 31 09:15:29 2013
 Charted by: Depth in Feet scaled 1:240

LTEN	322	TT (usec)	222	0	AMP (mV)	100	0	AMPAVG	150	200	VDL	1200	1	SECTOR MAP	8
0	(lb)1000	-9	CCL	1	0	AMPx5 (mV)	20	0	AMPMAX	150			25		75
		0	GR (GAPI)	150				0	AMPMIN	150					



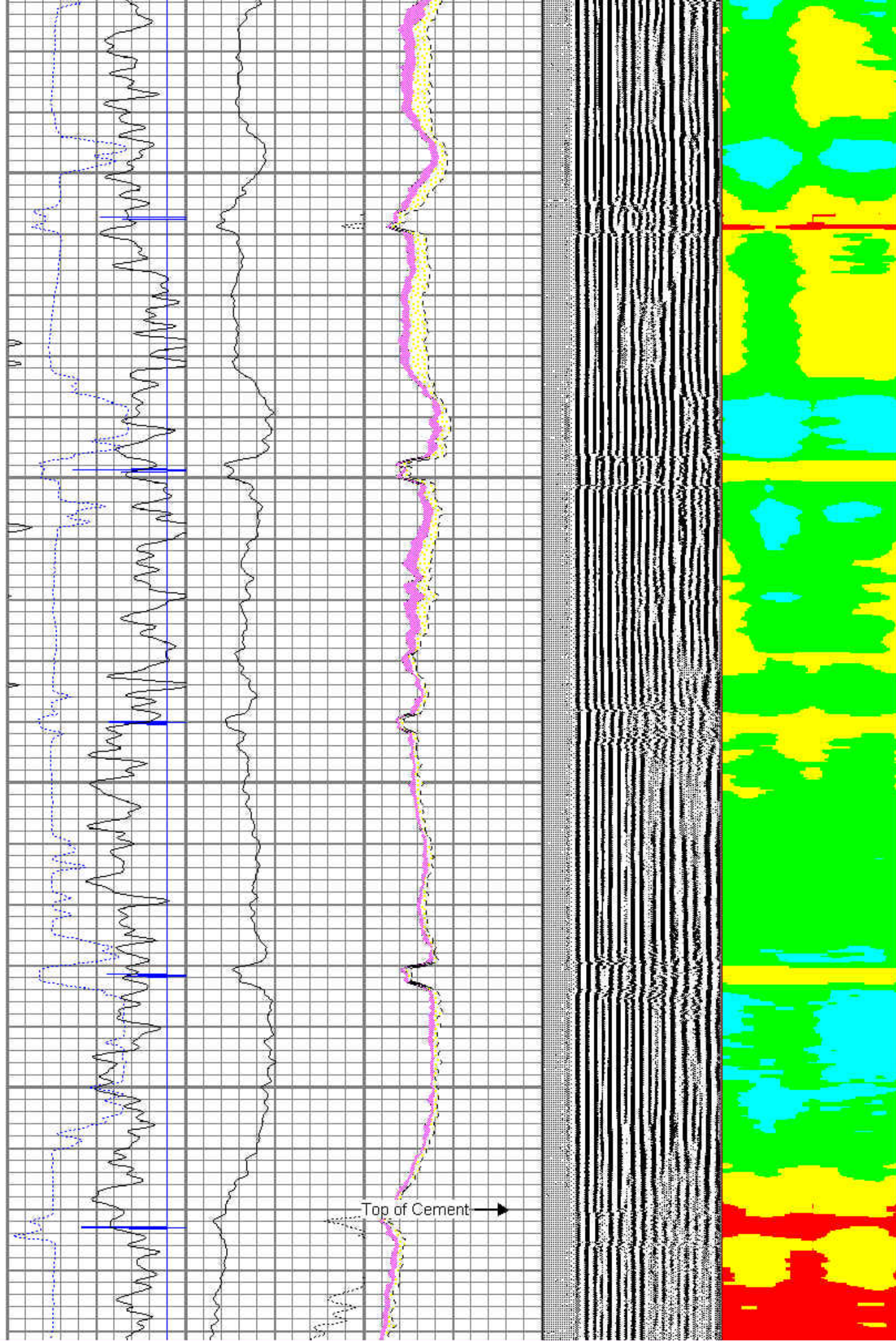
2800

2900



3000

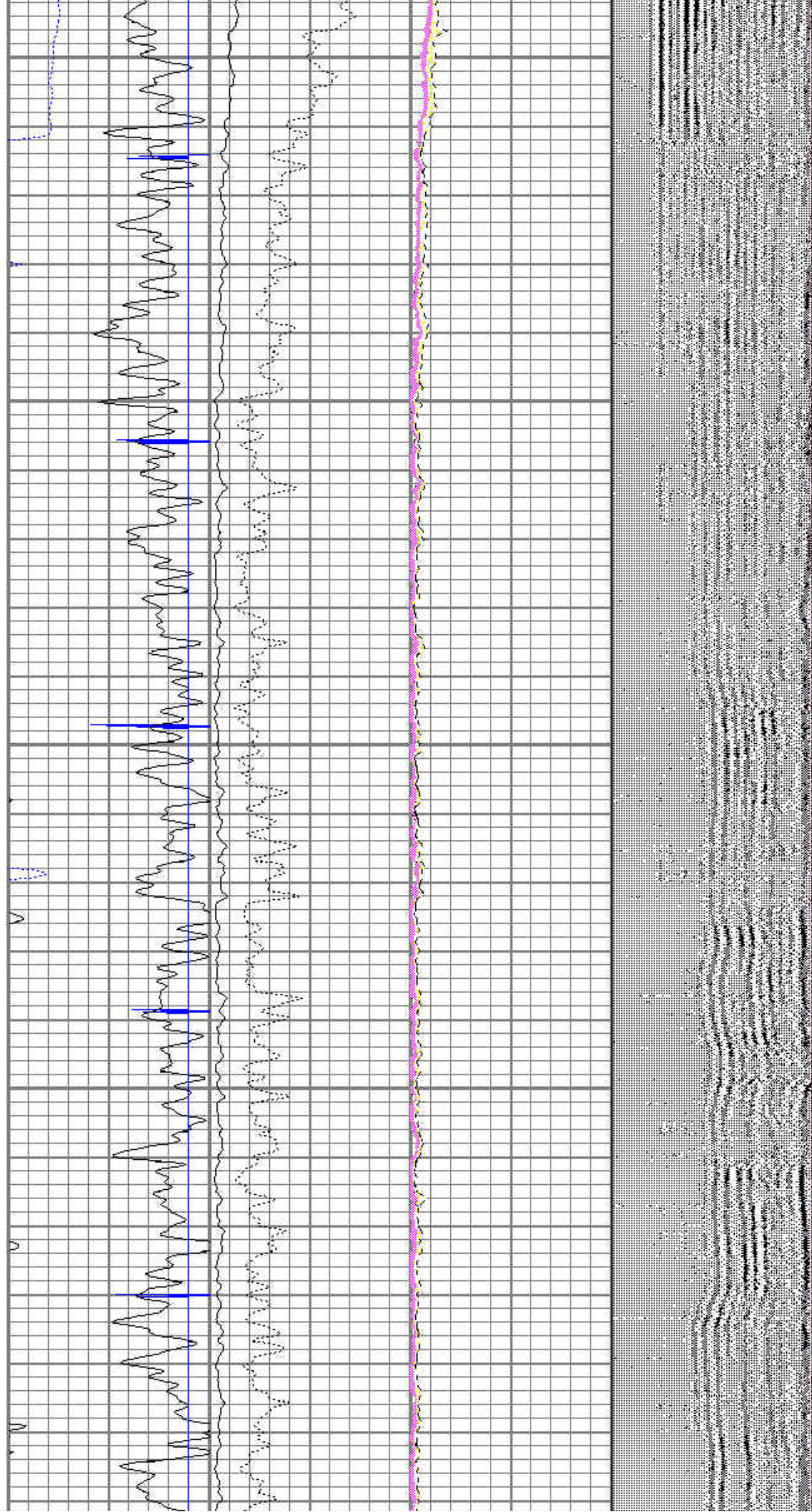
3100



3200

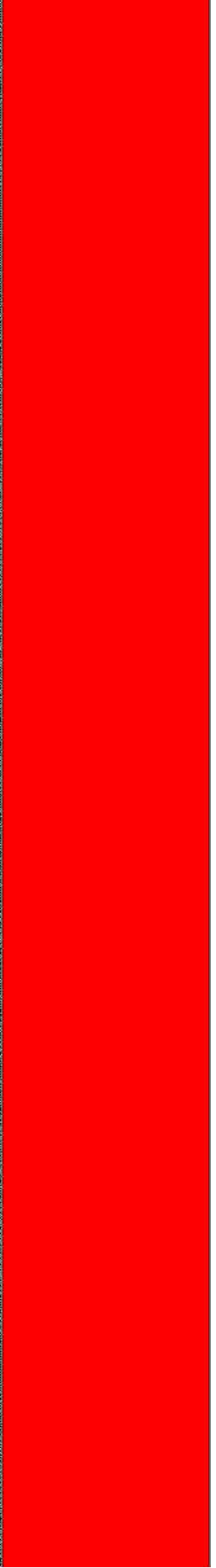
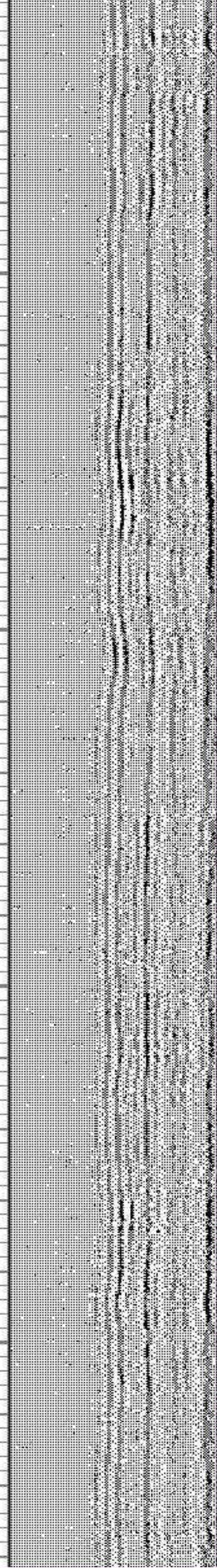
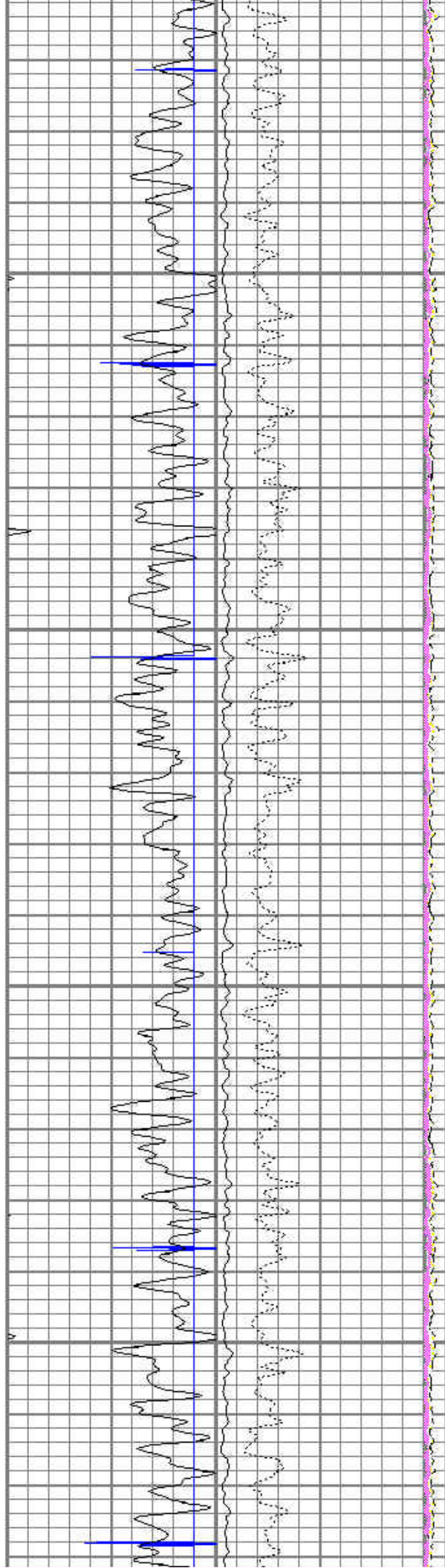
3300

3400



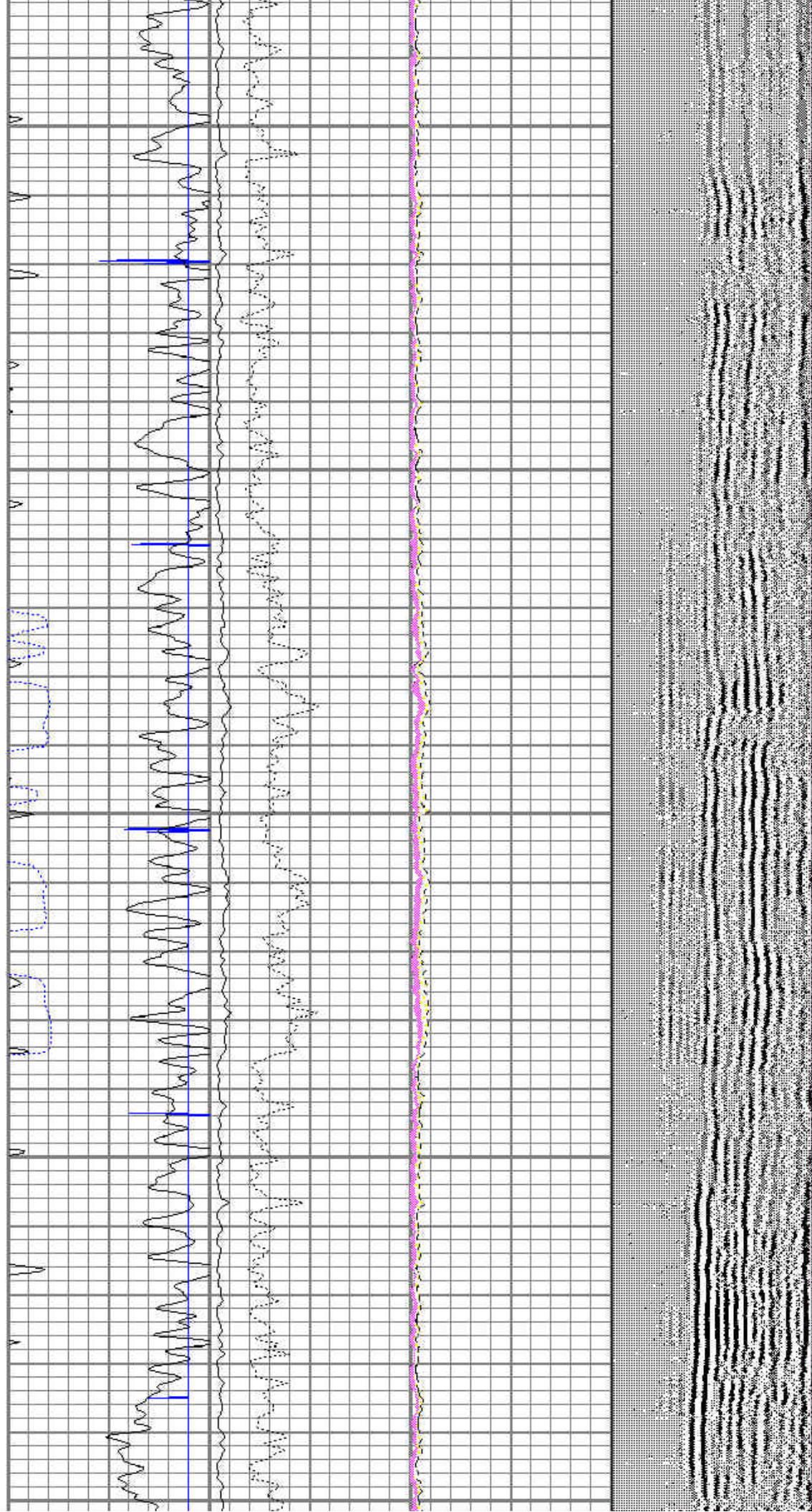
3500

3600



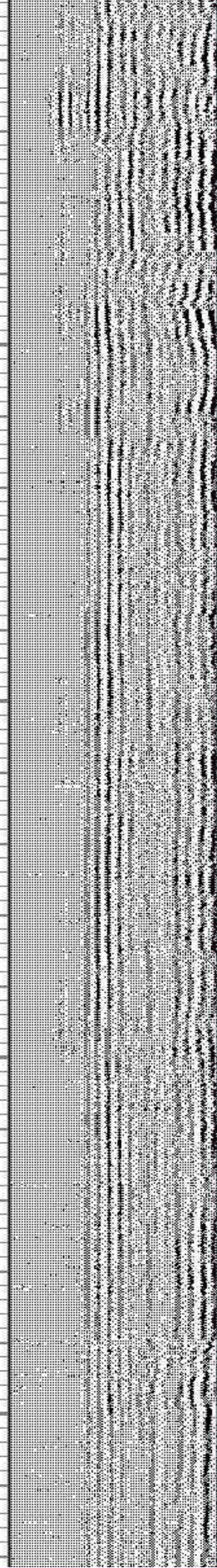
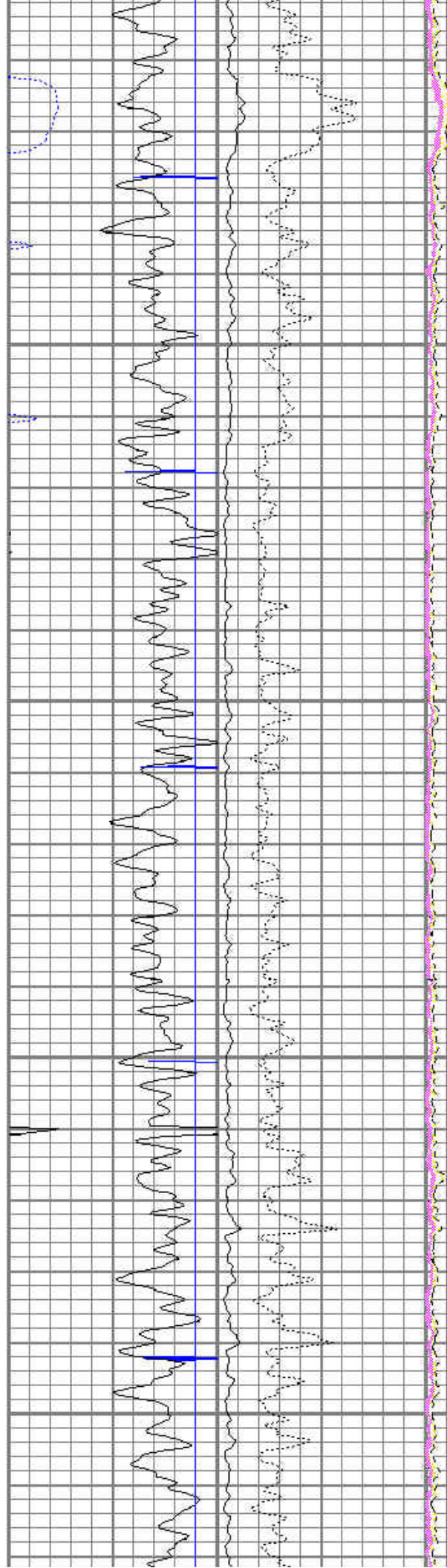
3700

3800



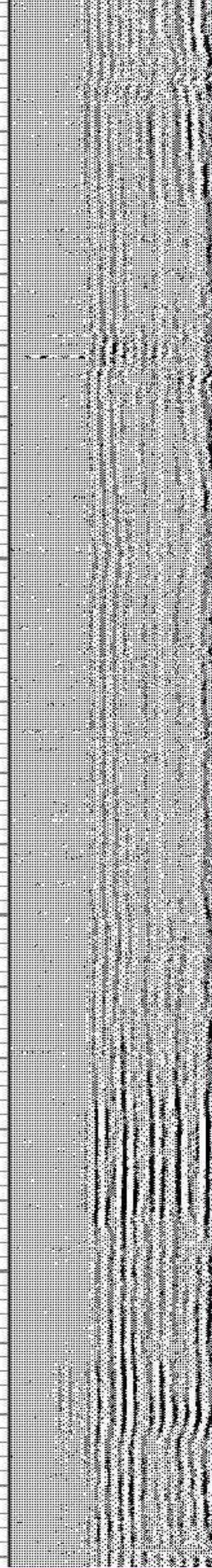
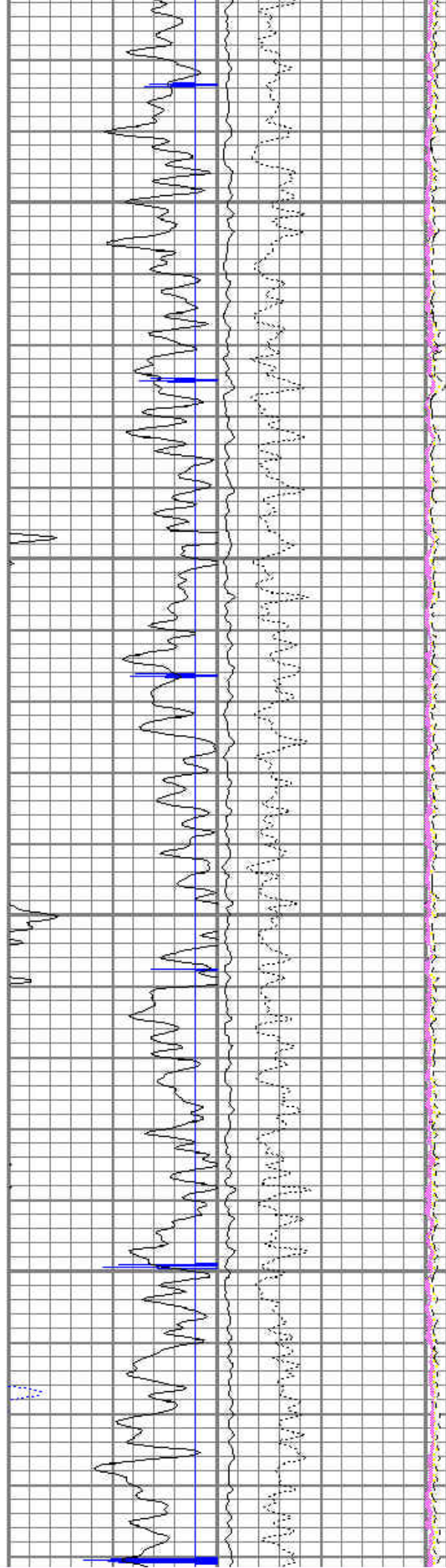
3900

4000



4100

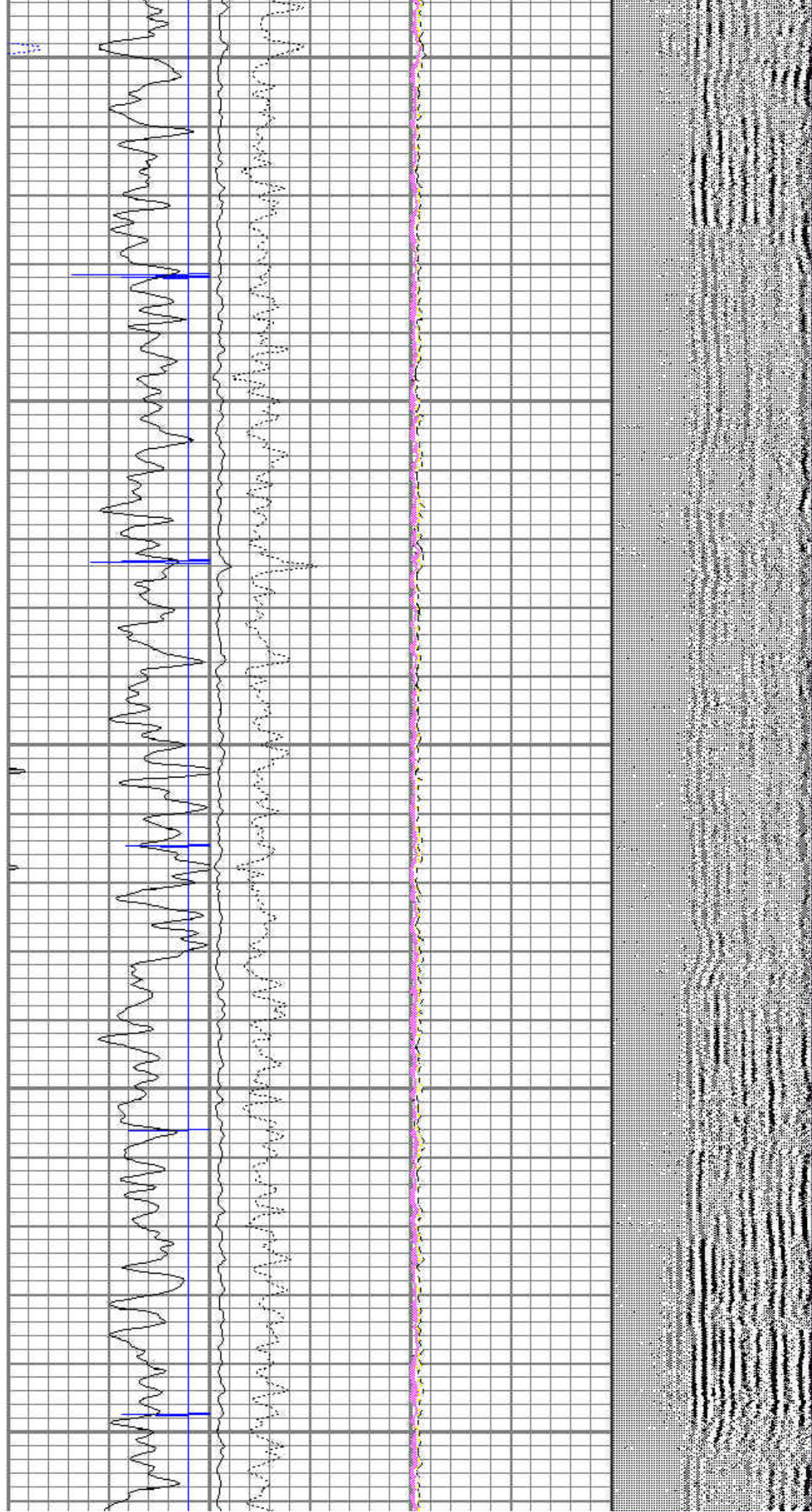
4200



4300

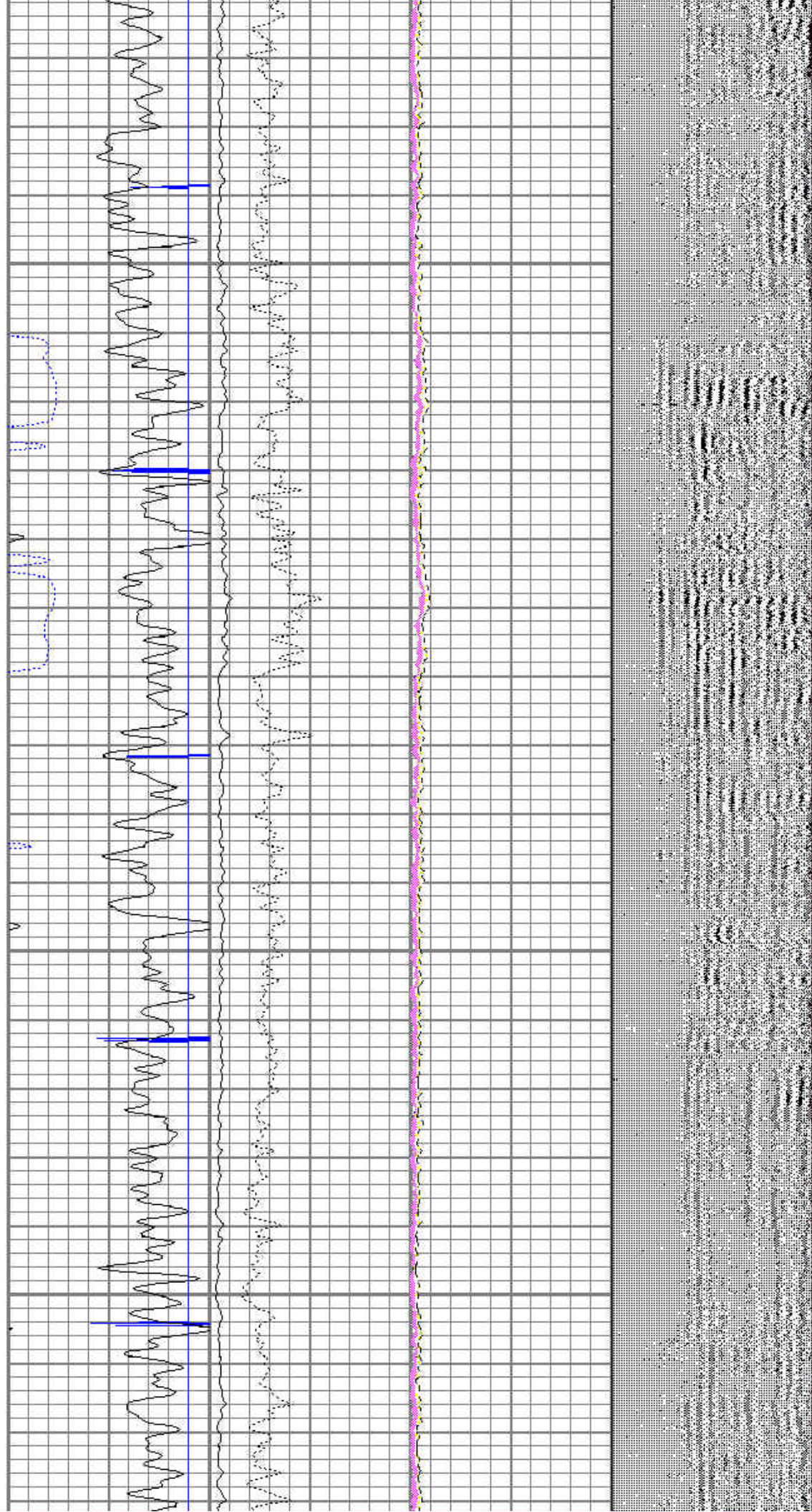
4400

4500



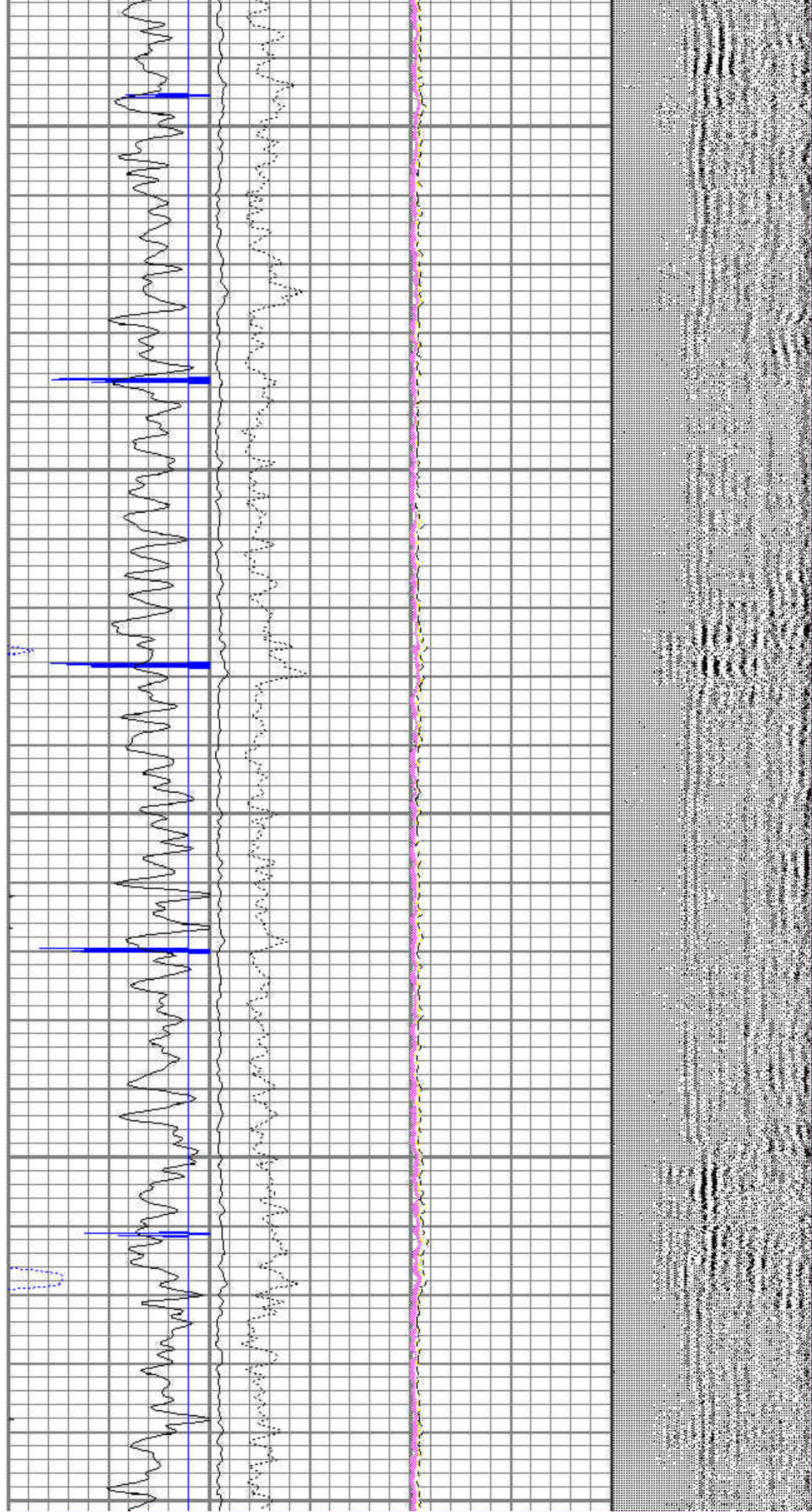
4600

4700



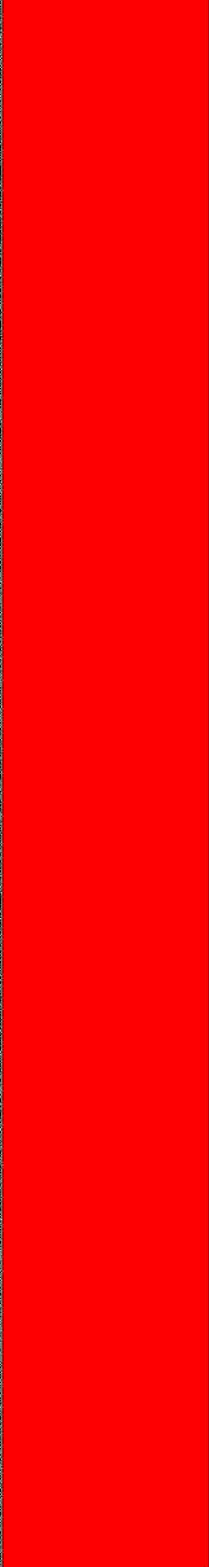
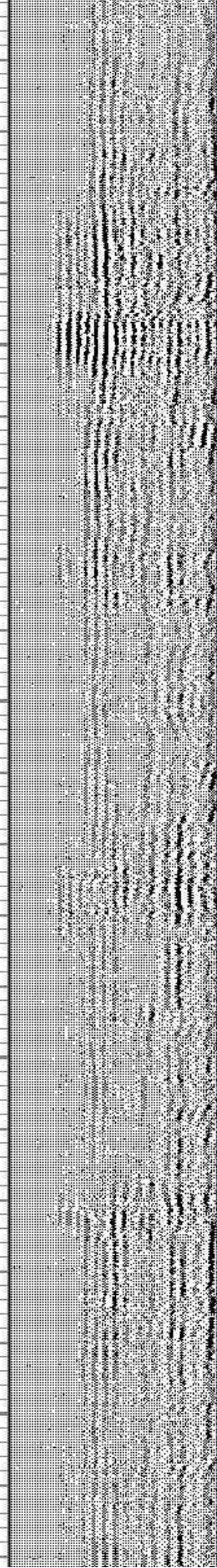
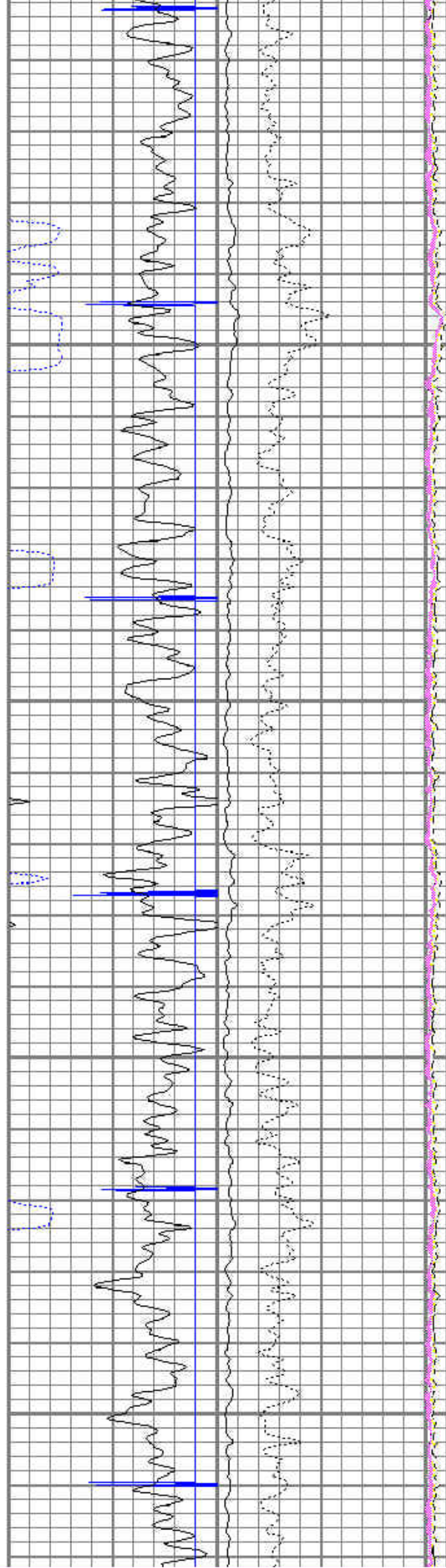
4800

4900



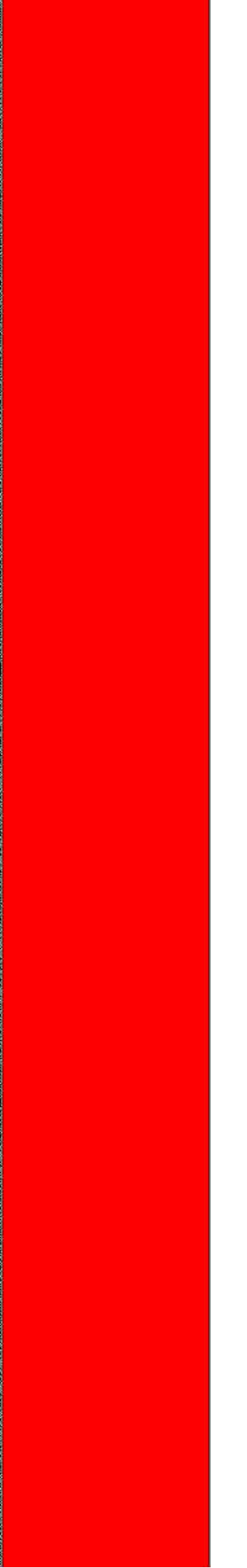
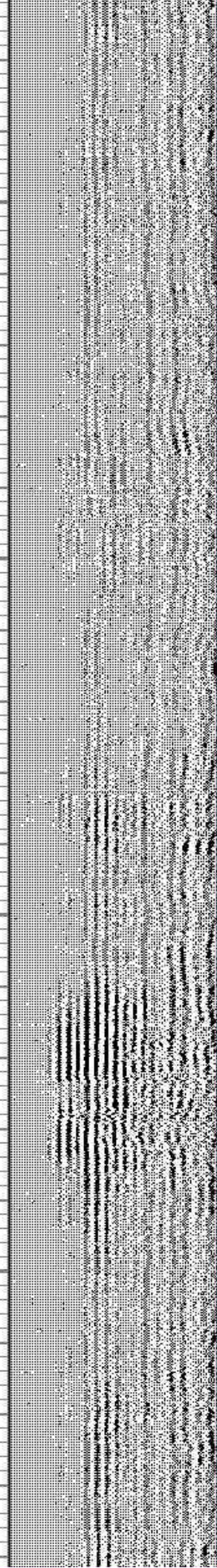
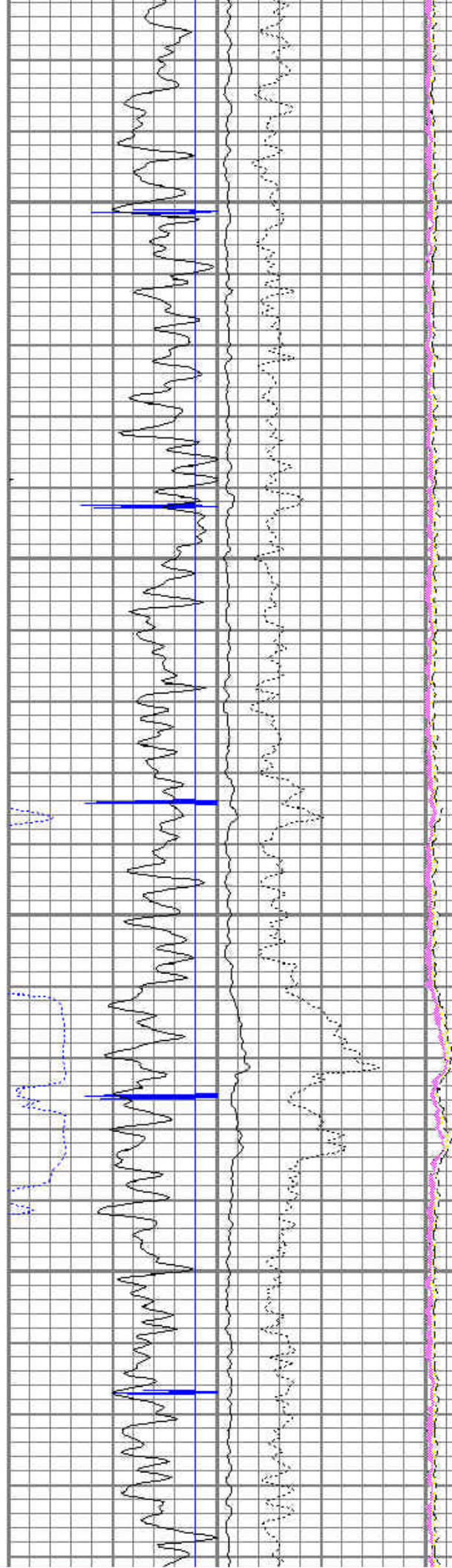
5000

5100



5200

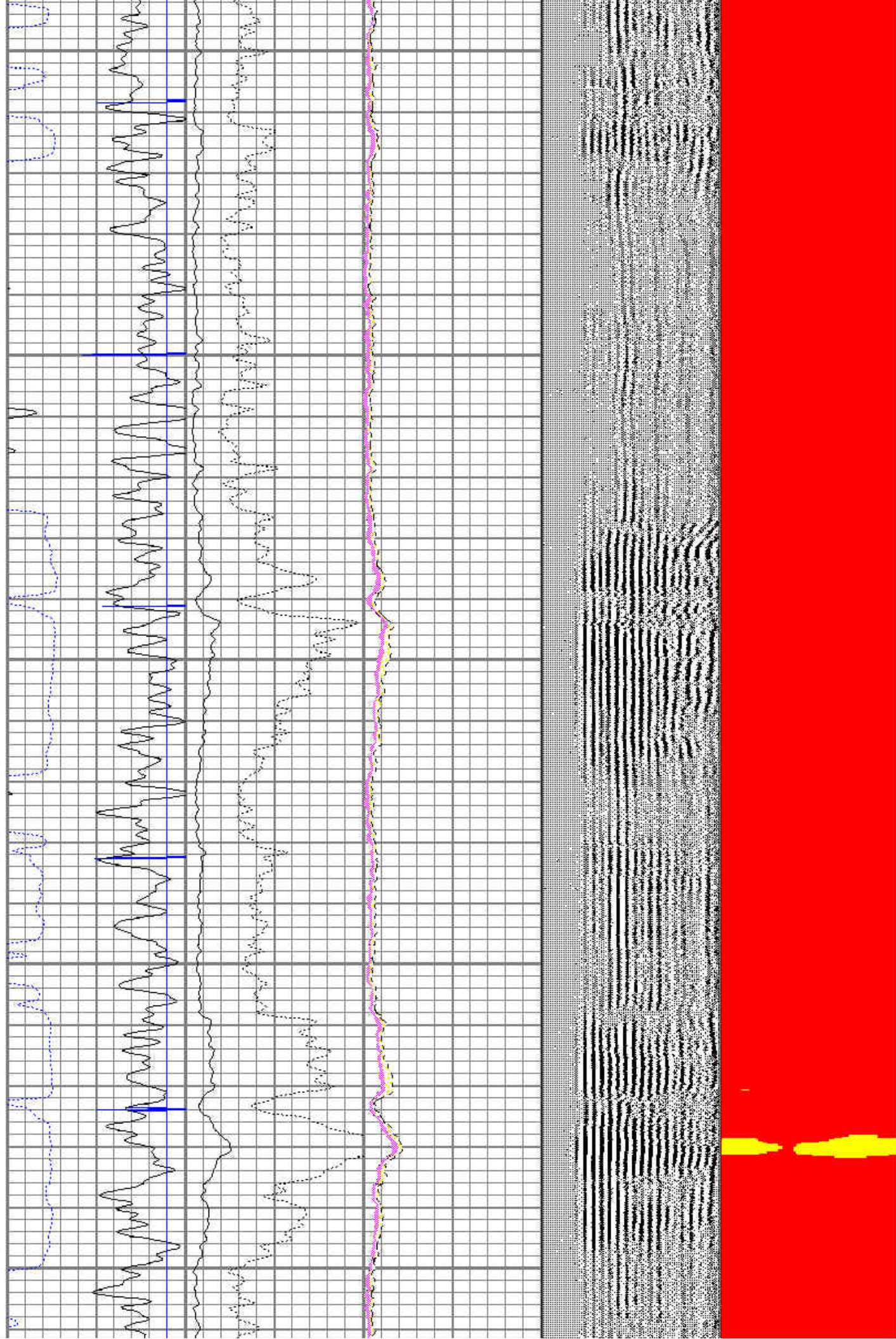
5300



5400

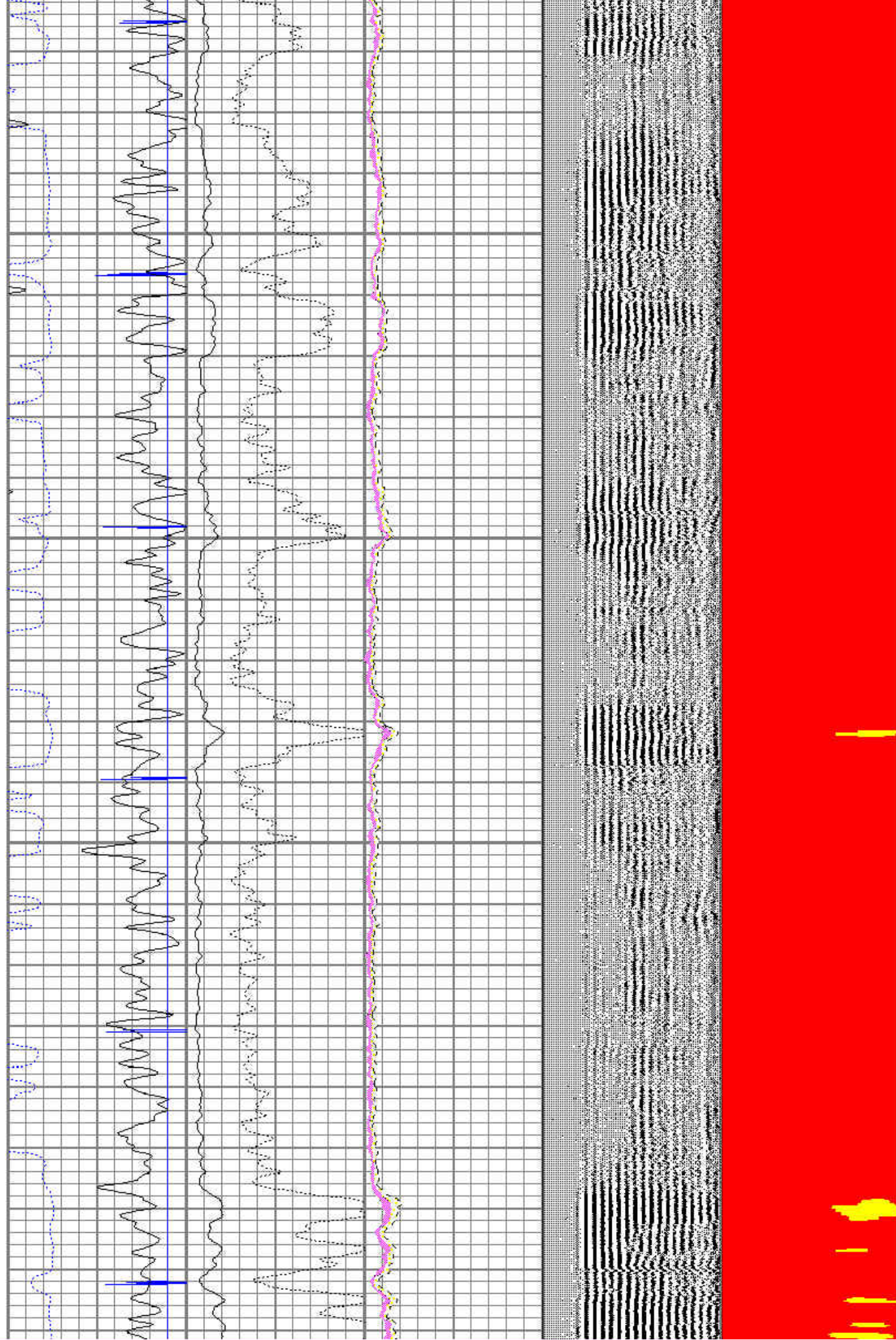
5500

5600



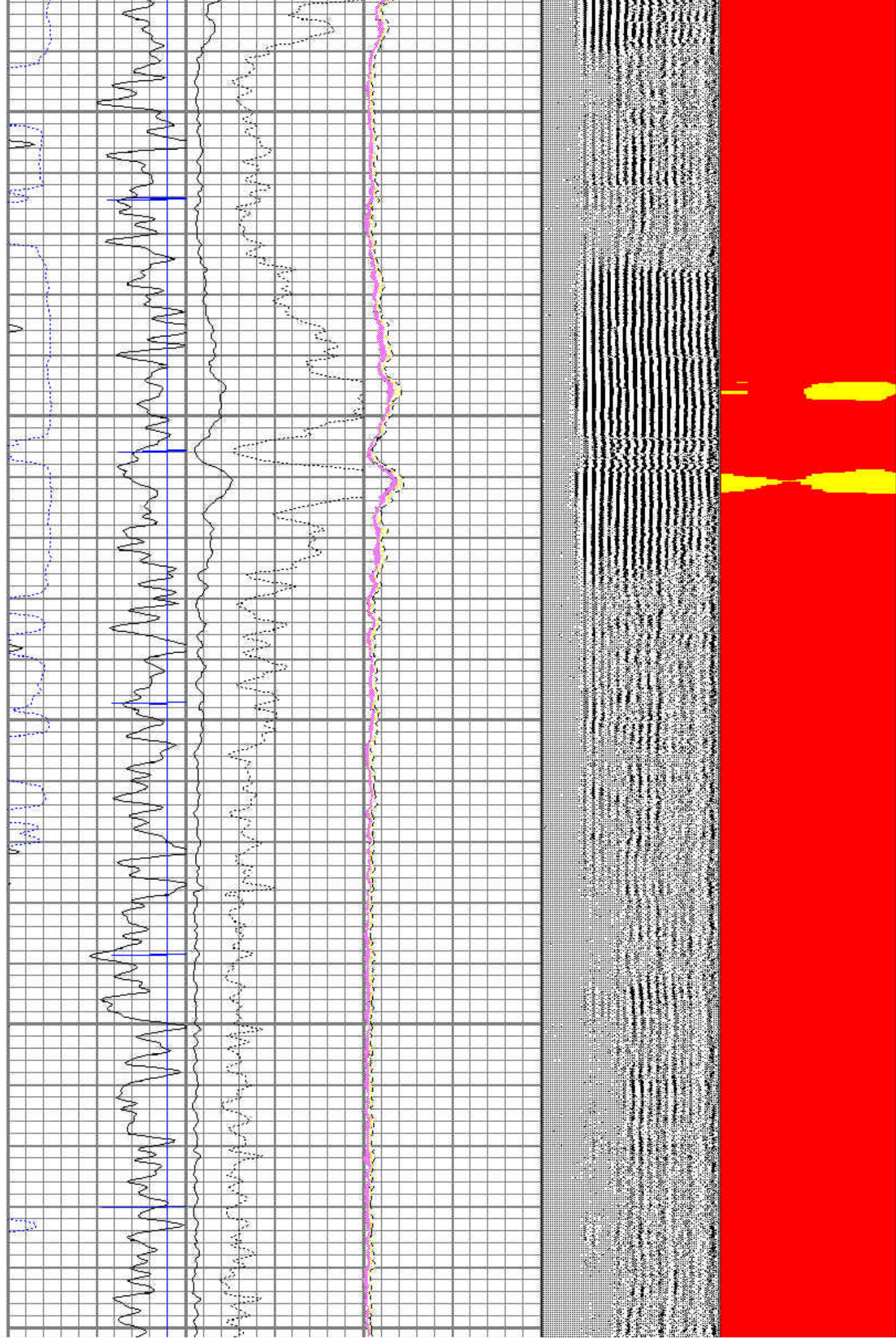
5700

5800



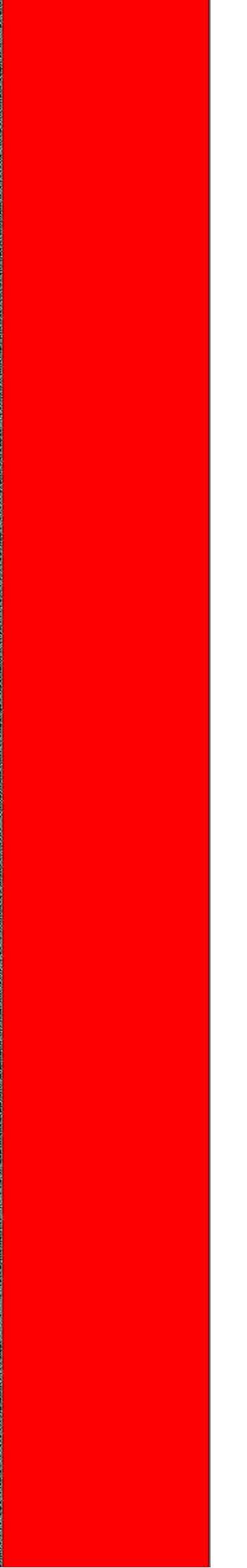
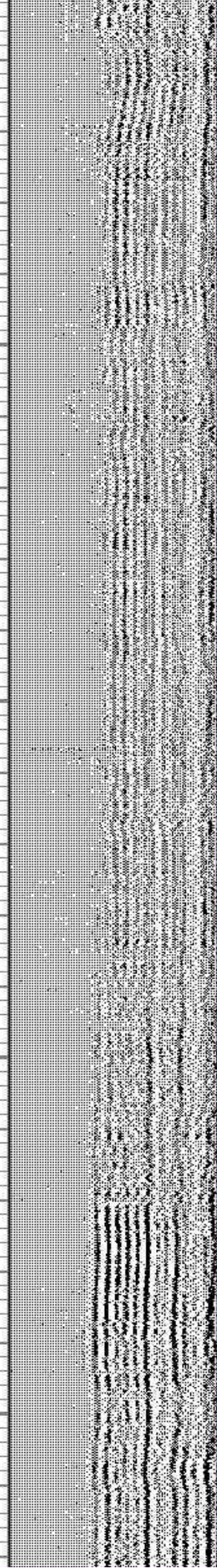
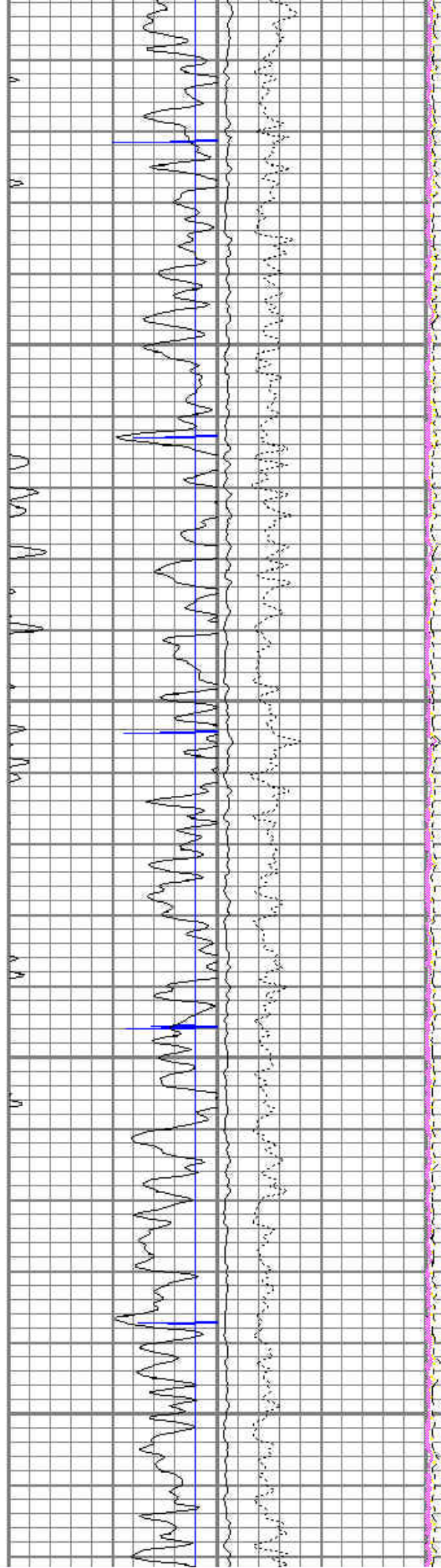
5900

6000



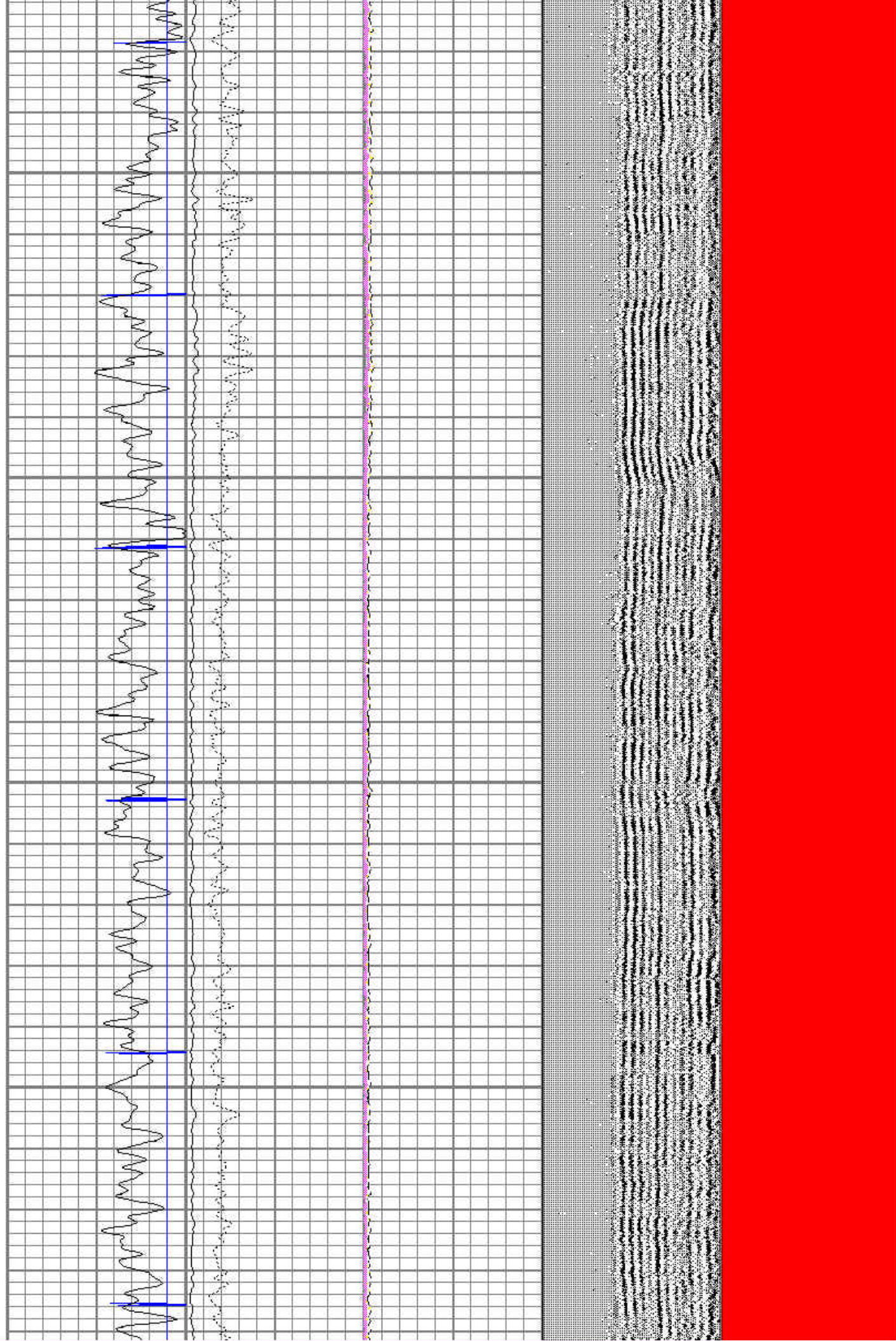
6100

6200



6300

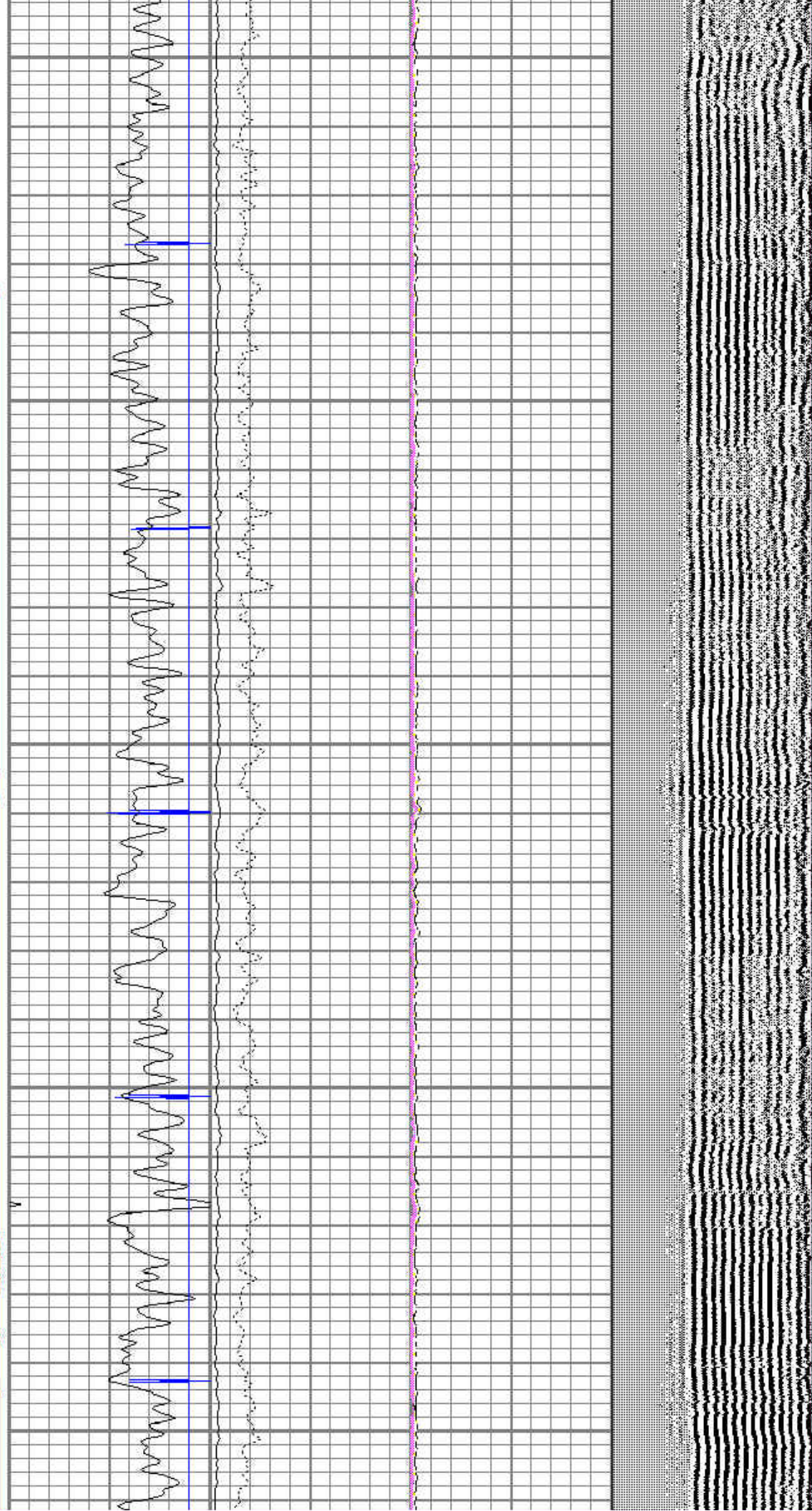
6400



6500

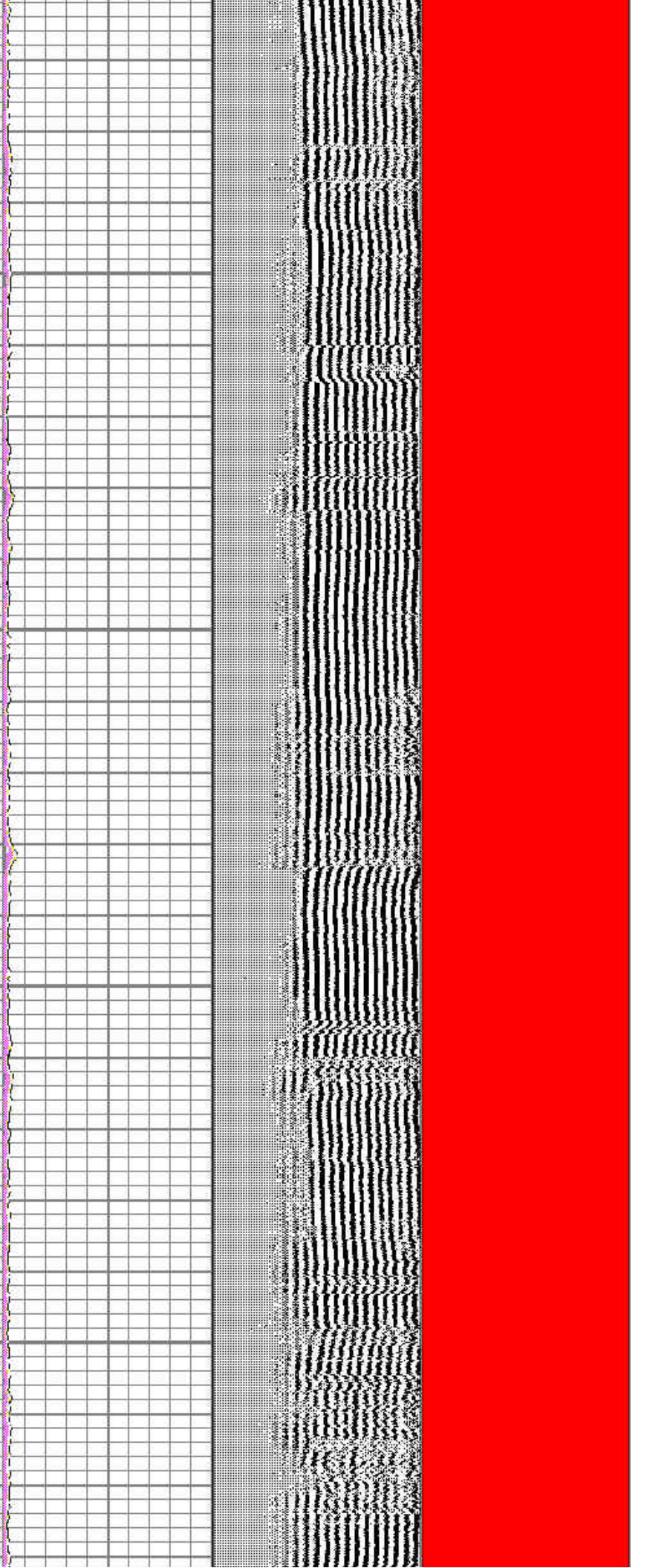
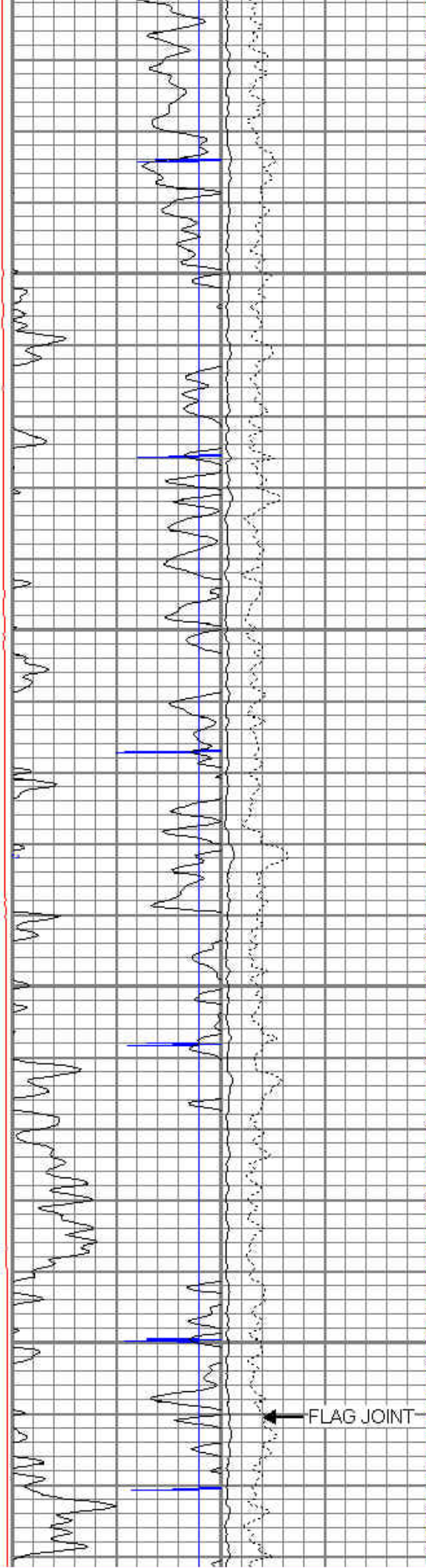
6600

6700



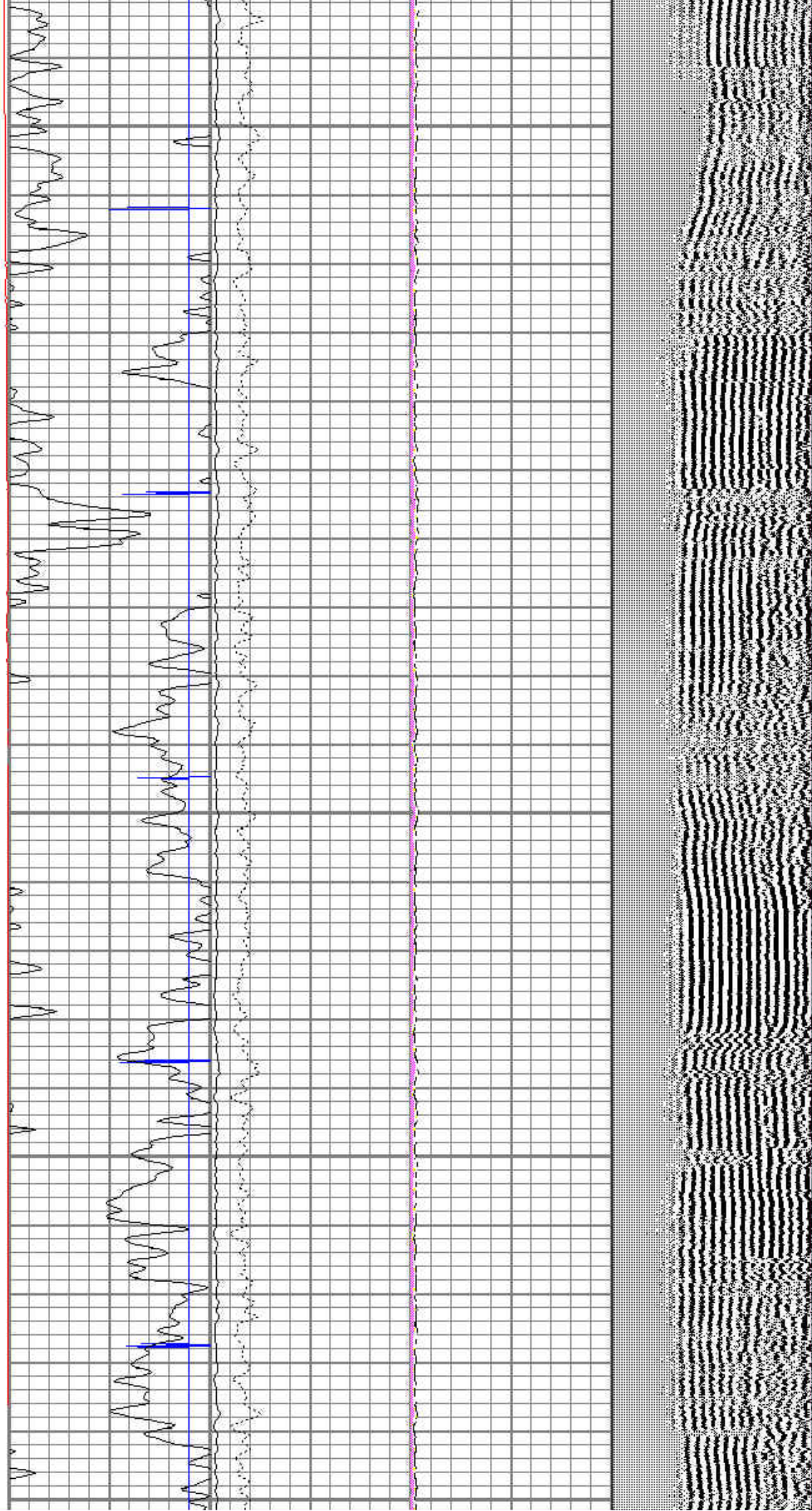
6800

6900



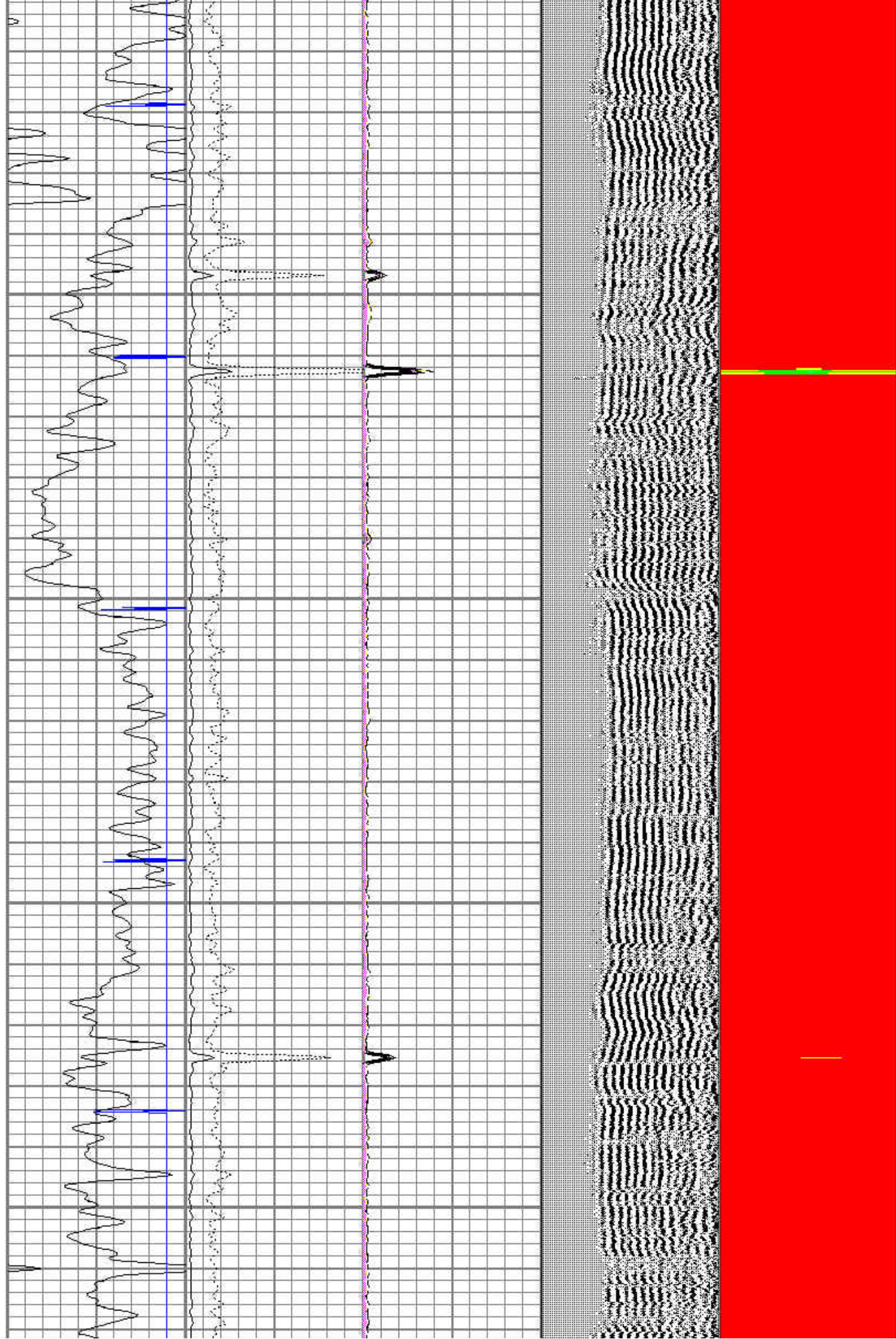
7000

7100



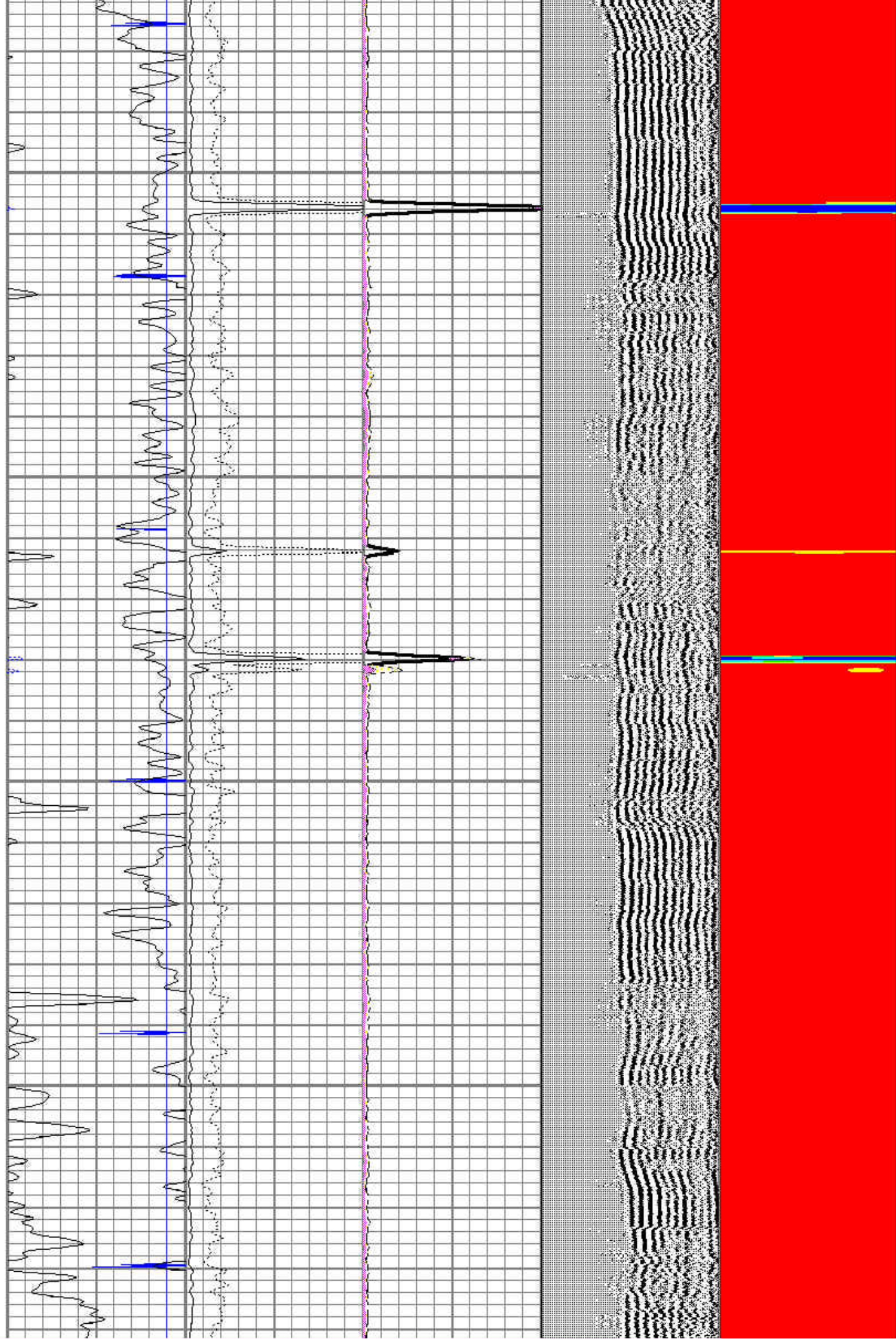
7200

7300



7400

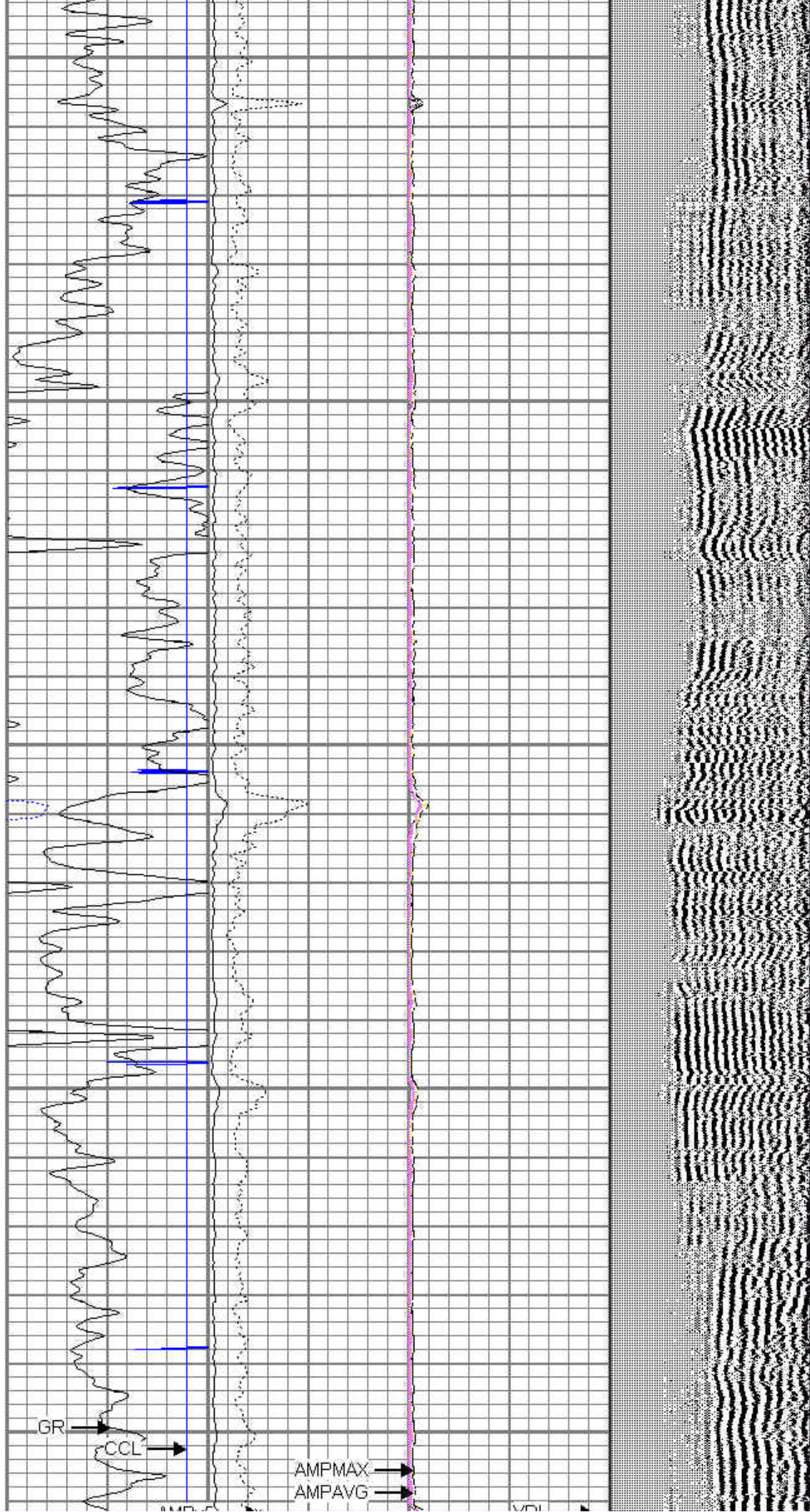
7500

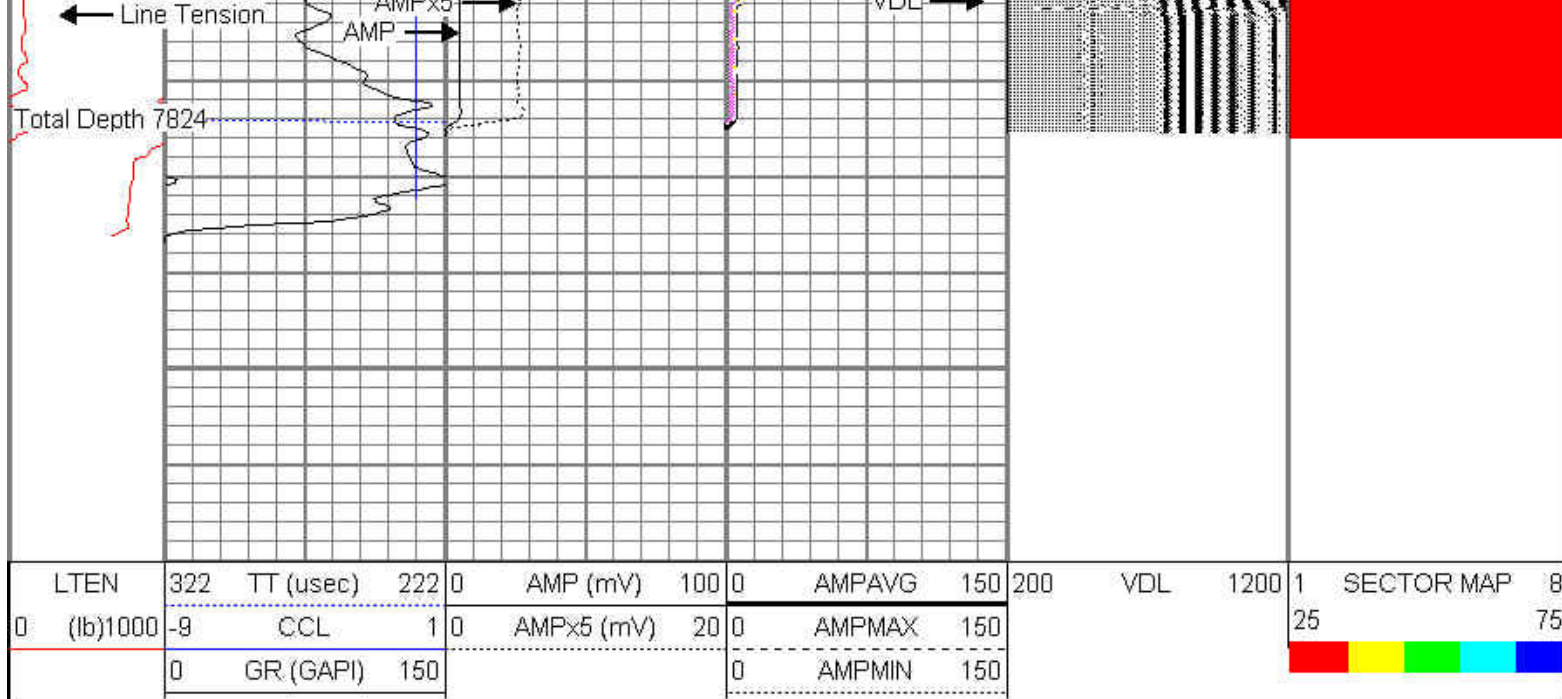


7600

7700

7800





Pioneer Energy Services

MAIN PASS



Pioneer Energy Services

REPEAT PASS

Database File: aristocrate angus 0-8-3 encana.db
 Dataset Pathname: pass6
 Presentation Format: scbl02
 Dataset Creation: Fri May 31 08:06:04 2013 by Log SCH 120430
 Charted by: Depth in Feet scaled 1:240

