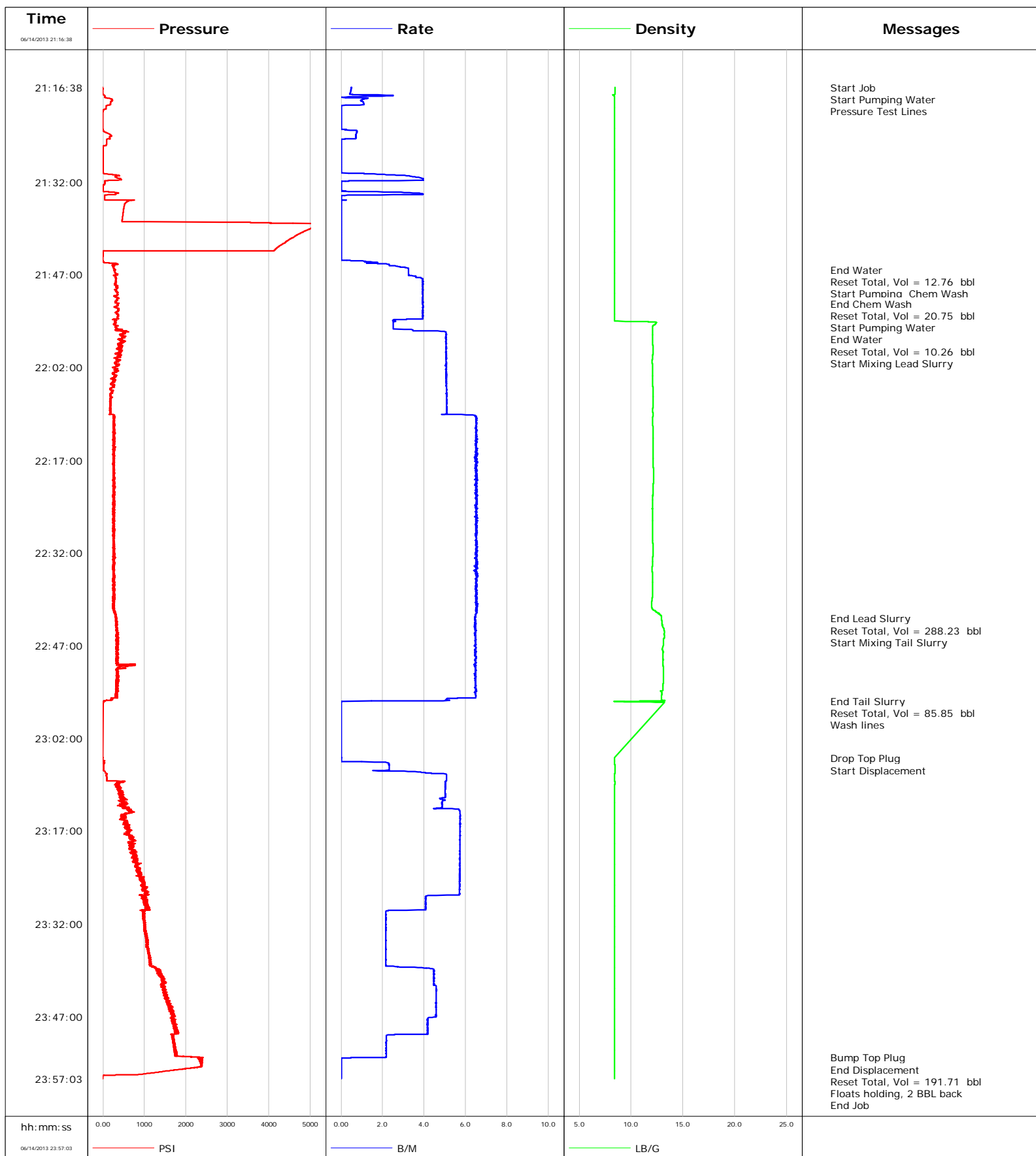


Well Silverton 16-10
Field Jolly Ranch
Engineer
Country United States

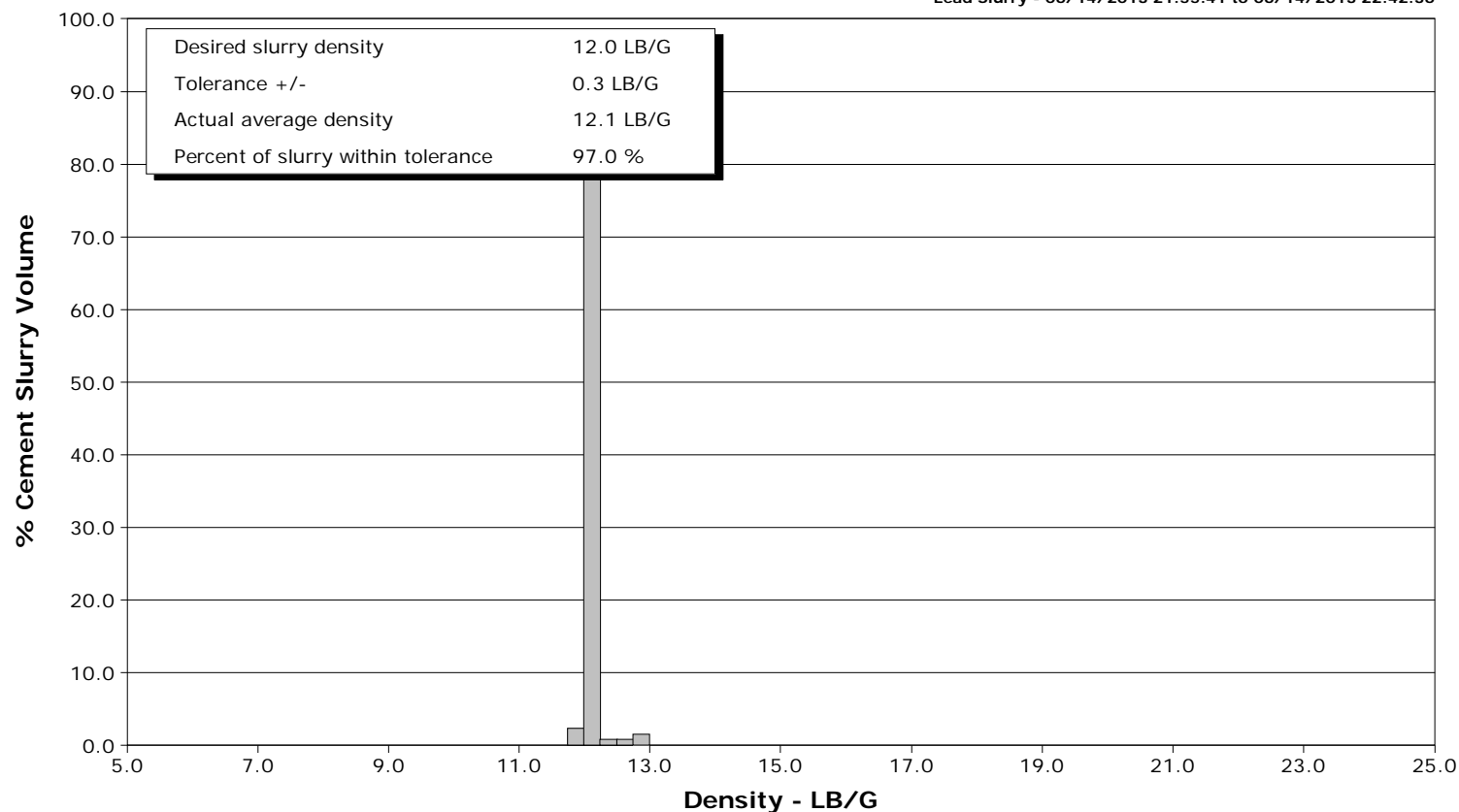
Client Nighthawk
SIR No. CFA0-00564
Job Type 5 1/2 LS
Job Date 06-14-2013



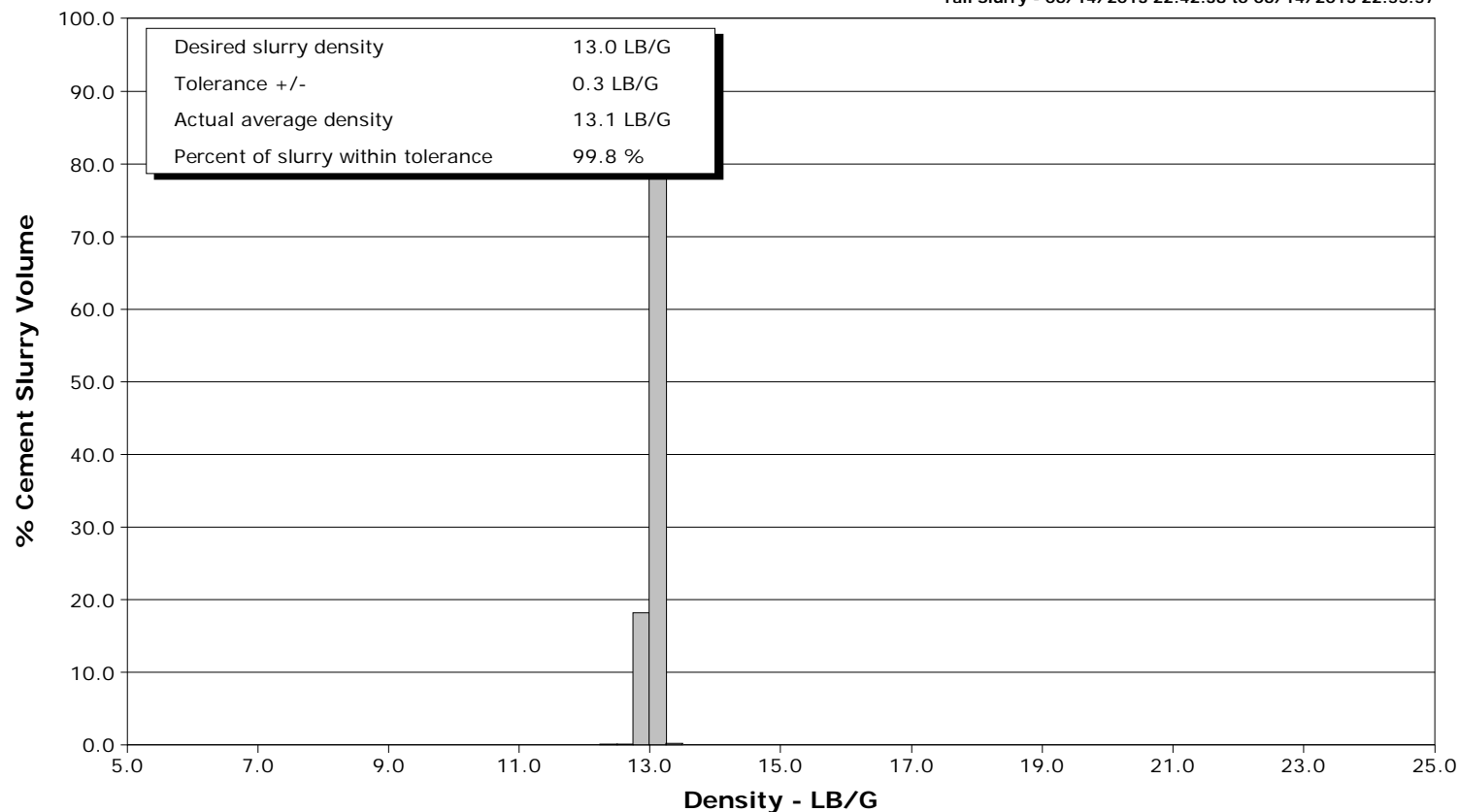
Well Silverton 16-10
Field Jolly Ranch
Engineer
Country United States

Client Nighthawk
SIR No. CFA0-00564
Job Type 5 1/2 LS
Job Date 06-14-2013

Lead Slurry - 06/14/2013 21:55:41 to 06/14/2013 22:42:36



Tail Slurry - 06/14/2013 22:42:38 to 06/14/2013 22:55:57





Cementing Service Report

				Customer Nighthawk		Job Number CFA0-00564	
Well Silverton 16-10			Location (legal) Xtreme 11		Schlumberger Location		Job Start Jun/14/2013
Field Jolly Ranch		Formation Name/Type Dirty-Sandstone		Deviation	Bit Size	Well MD	Well TVD
County		State/Province Colorado		BHP	BHST	BHCT	Pore Press. Gradient
Well Master		API/UWI					
Rig Name Xtreme 11		Drilled For Oil		Service Via Land		Casing/Liner	
				Depth, ft	Size, in	Weight, lb/ft	Grade
Offshore Zone		Well Class New		Well Type Development		Thread	
				8432.0	5.250	0.0	8RD
				0.0	0.000	0.0	
Drilling Fluid Type		Max. Density		Plastic Viscosity		Tubing/Drill Pipe	
Service Line Cementing		Job Type 5 1/2 LS		Depth,	Size,	Weight,	Grade
Max. Allowed Tub. Press		Max. Allowed Ann. Press		WH Connection Single Cement head		Perforations/Open Hole	
Service Instructions				Top,	Bottom,	No. of Shots	Total Interval
							Diameter
Treat Down Casing		Displacement 129.0 bbl		Packer Type		Packer Depth	
Tubing Vol.		Casing Vol.		Annular Vol.		Openhole Vol.	
Casing/Tubing Secured <input checked="" type="checkbox"/>		1 Hole Vol. Circulated prior to Cement <input checked="" type="checkbox"/>		Casing Tools		Squeeze Job	
Lift Pressure				Shoe Type		Squeeze Type	
Pipe Rotated <input type="checkbox"/>		Pipe Reciprocated <input type="checkbox"/>		Shoe Depth 8432.0 ft		Tool Type	
No. Centralizers		Top Plugs 1		Bottom Plugs		Stage Tool Type	
						Tool Depth	
Cement Head Type				Stage Tool Depth		Tail Pipe Size	
Job Scheduled For Jun/14/2013		Arrived on Location Jun/14/2013		Leave Location Jun/14/2013		Collar Type	
						Tail Pipe Depth	
						Sqz. Total Vol.	
Date	Time 24-hr clock	Treating Pressure PSI	Flow Rate B/M	Density LB/G	Volume BBL	Message	
06/14/2013	20:24:12					Started Acquisition	
06/14/2013	21:16:38					Start Job	
06/14/2013	21:16:38	0	0.5	8.44	0.0		
06/14/2013	21:16:40					Start Pumping Water	
06/14/2013	21:16:40	-1	0.5	8.44	0.0		
06/14/2013	21:16:42					Pressure Test Lines	
06/14/2013	21:16:42	-0	0.5	8.44	0.0		
06/14/2013	21:17:32	-1	0.4	8.43	0.4		
06/14/2013	21:20:12	52	0.0	8.41	2.6		
06/14/2013	21:22:52	-1	0.0	8.41	2.6		
06/14/2013	21:25:32	86	0.0	8.41	3.6		
06/14/2013	21:28:12	1	0.0	8.41	3.6		
06/14/2013	21:30:52	326	2.7	8.41	4.1		
06/14/2013	21:33:32	41	1.3	8.41	7.5		
06/14/2013	21:36:12	503	0.0	8.41	9.3		
06/14/2013	21:38:52	5300	0.0	8.41	9.3		
06/14/2013	21:41:32	4437	0.0	8.41	9.3		
06/14/2013	21:44:12	-1	0.0	8.41	9.3		
06/14/2013	21:46:11					End Water	
06/14/2013	21:46:11	300	3.3	8.41	12.7		
06/14/2013	21:46:12					Reset Total, Vol = 12.76 bbl	

Well			Field		Job Start		Customer		Job Number	
Silverton 16-10			Jolly Ranch		Jun/14/2013		Nighthawk		CFA0-00564	
Date	Time 24-hr clock	Treating Pressure PSI	Flow Rate B/M	Density LB/G	Volume BBL	Message				
06/14/2013	21:46:15					Start Pumping Chem Wash				
06/14/2013	21:46:15	294	3.2	8.41	0.2					
06/14/2013	21:46:52	350	3.3	8.41	2.2					
06/14/2013	21:49:32	329	3.9	8.41	12.4					
06/14/2013	21:51:39					End Chem Wash				
06/14/2013	21:51:39	368	3.9	8.41	20.7					
06/14/2013	21:51:40					Reset Total, Vol = 20.75 bbl				
06/14/2013	21:51:40	376	3.9	8.40	20.8					
06/14/2013	21:51:42					Start Pumping Water				
06/14/2013	21:51:42	361	3.9	8.41	0.1					
06/14/2013	21:52:12	269	4.0	8.40	2.1					
06/14/2013	21:54:18					End Water				
06/14/2013	21:54:18	281	2.5	8.40	10.2					
06/14/2013	21:54:19					Reset Total, Vol = 10.26 bbl				
06/14/2013	21:54:19	287	2.5	8.40	10.3					
06/14/2013	21:54:52	304	2.5	12.38	1.4					
06/14/2013	21:55:41					Start Mixing Lead Slurry				
06/14/2013	21:55:41	352	2.5	12.07	3.4					
06/14/2013	21:57:32	395	5.1	12.08	12.0					
06/14/2013	22:00:12	376	5.1	12.09	25.5					
06/14/2013	22:02:52	247	5.1	12.07	39.0					
06/14/2013	22:05:32	175	5.1	12.11	52.5					
06/14/2013	22:08:12	190	5.1	12.11	66.1					
06/14/2013	22:10:52	246	6.5	12.09	81.4					
06/14/2013	22:13:32	247	6.5	12.10	98.8					
06/14/2013	22:16:12	247	6.5	12.12	116.1					
06/14/2013	22:18:52	270	6.5	12.16	133.5					
06/14/2013	22:21:32	290	6.5	12.12	150.9					
06/14/2013	22:24:12	259	6.5	12.05	168.3					
06/14/2013	22:26:52	241	6.5	12.06	185.6					
06/14/2013	22:29:32	258	6.5	12.06	203.0					
06/14/2013	22:32:12	268	6.5	12.11	220.4					
06/14/2013	22:34:52	281	6.4	12.03	237.8					
06/14/2013	22:37:32	274	6.5	12.07	255.1					
06/14/2013	22:40:12	236	6.5	11.98	272.5					
06/14/2013	22:42:36					End Lead Slurry				
06/14/2013	22:42:36	315	6.5	12.93	288.1					
06/14/2013	22:42:37					Reset Total, Vol = 288.23 bbl				
06/14/2013	22:42:37	306	6.5	12.94	288.2					
06/14/2013	22:42:38					Start Mixing Tail Slurry				
06/14/2013	22:42:38	323	6.5	12.94	0.1					
06/14/2013	22:42:52	306	6.5	12.95	1.6					
06/14/2013	22:45:32	328	6.5	13.22	18.9					
06/14/2013	22:48:12	352	6.4	13.07	36.1					
06/14/2013	22:50:52	337	6.5	13.12	53.4					
06/14/2013	22:53:32	343	6.5	13.06	70.7					
06/14/2013	22:55:57					End Tail Slurry				
06/14/2013	22:55:57	50	4.8	12.40	85.7					
06/14/2013	22:56:02					Reset Total, Vol = 85.85 bbl				
06/14/2013	22:56:02	16	0.0	8.36	85.9					
06/14/2013	22:56:06					Wash lines				
06/14/2013	22:56:06	15	0.0	10.39	0.0					
06/14/2013	22:56:12	11	0.0	13.04	0.0					
06/14/2013	23:05:15					Drop Top Plug				

Well			Field		Job Start		Customer		Job Number	
Silverton 16-10			Jolly Ranch		Jun/14/2013		Nighthawk		CFA0-00564	
Date	Time 24-hr clock	Treating Pressure PSI	Flow Rate B/M	Density LB/G	Volume BBL	Message				
06/14/2013	23:05:17					Start Displacement				
06/14/2013	23:05:17	-3	0.0	8.41	0.0					
06/14/2013	23:06:52	20	2.3	8.44	2.4					
06/14/2013	23:09:32	343	5.0	8.42	14.2					
06/14/2013	23:12:12	499	4.9	8.41	27.5					
06/14/2013	23:14:52	485	5.7	8.41	41.7					
06/14/2013	23:17:32	591	5.7	8.41	57.0					
06/14/2013	23:20:12	790	5.7	8.41	72.3					
06/14/2013	23:22:52	794	5.7	8.41	87.5					
06/14/2013	23:25:32	995	5.7	8.41	102.8					
06/14/2013	23:28:12	1006	4.1	8.41	116.7					
06/14/2013	23:30:52	957	2.2	8.41	125.5					
06/14/2013	23:33:32	1011	2.2	8.41	131.3					
06/14/2013	23:36:12	1072	2.2	8.41	137.0					
06/14/2013	23:38:52	1213	2.3	8.41	142.8					
06/14/2013	23:41:32	1524	4.5	8.41	154.3					
06/14/2013	23:44:12	1561	4.6	8.41	166.5					
06/14/2013	23:46:52	1666	4.6	8.41	178.7					
06/14/2013	23:49:32	1794	4.2	8.41	189.9					
06/14/2013	23:52:12	1712	2.2	8.41	196.5					
06/14/2013	23:53:41					Bump Top Plug				
06/14/2013	23:53:41	2282	0.5	8.41	199.7					
06/14/2013	23:53:43					End Displacement				
06/14/2013	23:53:43	2399	0.2	8.41	199.7					
06/14/2013	23:53:45					Reset Total, Vol = 191.71 bbl				
06/14/2013	23:53:45	2366	0.0	8.41	199.7					
06/14/2013	23:54:52	2364	0.0	8.41	0.0					
06/14/2013	23:56:33					Floats holding, 2 BBL back				
06/14/2013	23:56:33	21	0.0	8.41	0.0					
06/14/2013	23:57:01					End Job				
06/14/2013	23:57:01	-2	0.0	8.41	0.0					

Post Job Summary

Average Pump Rates, bbl/min					Volume of Fluid Injected, bbl			
Slurry 4.9	N2	Mud 0.0	Maximum Rate 6.6	Total Slurry 373.0	Mud 0.0	Spacer 0.0	N2	
Treating Pressure Summary, psi					Breakdown Fluid			
Maximum 5440	Final -2	Average 646	Bump Plug to	Breakdown	Type	Volume	Density	
Avg. N2 Percent		Designed Slurry Volume 360.0 bbl		Displacement 191.0 bbl	Mix Water Temp	Cement Circulated to Surface? <input checked="" type="checkbox"/>	Volume	
						Washed Thru Perfs <input type="checkbox"/>	To	
Customer or Authorized Representative			Schlumberger Supervisor Anthony Fowler			Circulation Lost <input type="checkbox"/>	Job Completed <input checked="" type="checkbox"/>	
						-	-	