

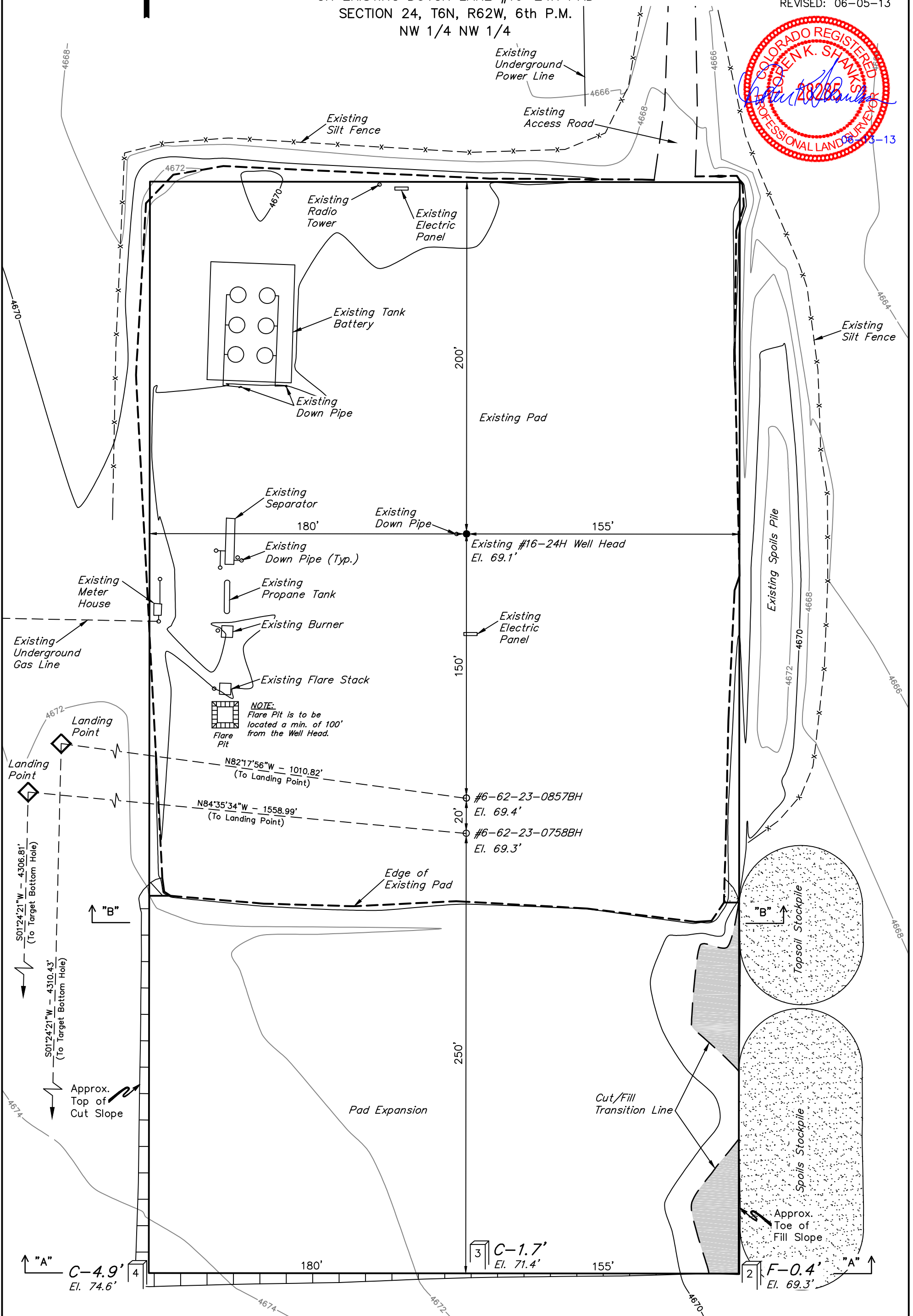
BILL BARRETT CORPORATION

CONSTRUCTION LAYOUT FOR

DUTCH LAKE #6-62-23-0857BH & #6-62-23-0758BH
ON EXISTING DUTCH LAKE #16-24H PAD
SECTION 24, T6N, R62W, 6th P.M.
NW 1/4 NW 1/4

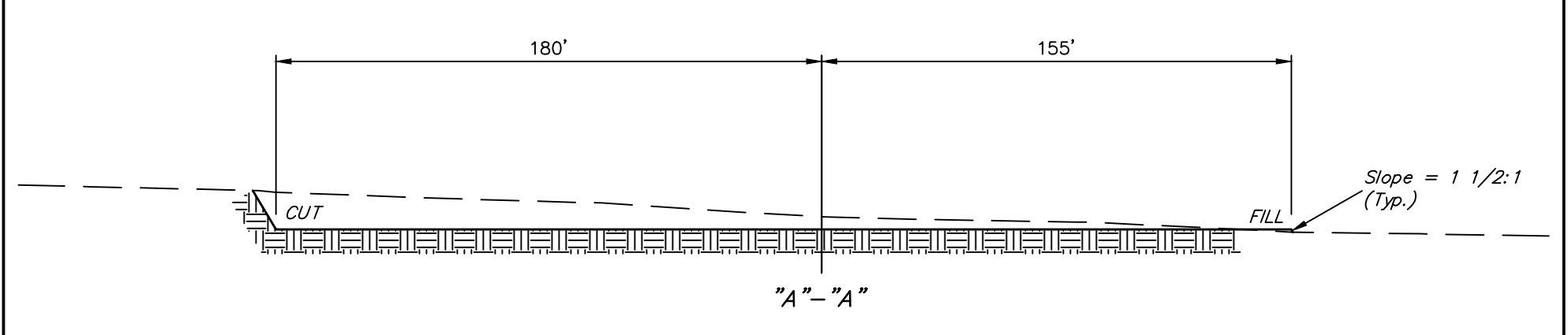
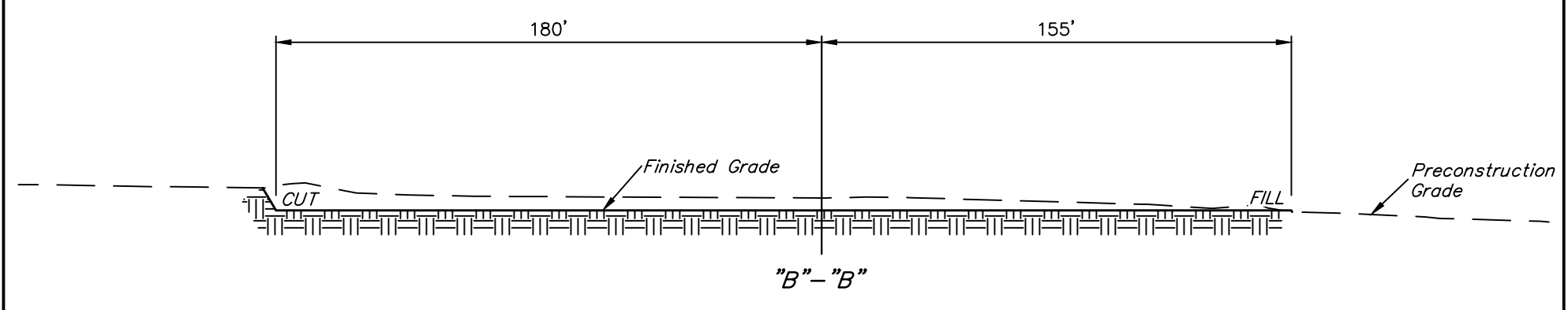
FIGURE #1

SCALE: 1" = 50'
DATE: 05-20-13
DRAWN BY: J.S.
REVISED: 06-05-13



FINISHED GRADE ELEV. AT PAD EXPANSION = 4669.7'

UINTAH ENGINEERING & LAND SURVEYING
85 So. 200 East * Vernal, Utah 84078 * (435) 789-1017



PAD EXPANSION

NOTE:
Topsoil should not be Stripped Below Finished Grade on Substructure Area.

* NOTE:
FILL QUANTITY INCLUDES 5% FOR COMPACTION

APPROXIMATE YARDAGES		APPROXIMATE ACREAGE	
(6") Topsoil Stripping	= 1,340 Cu. Yds.	EXISTING WELL SITE DISTURBANCE	= ± 3.815 ACRES
(New Construction Only)		NEW WELL SITE DISTURBANCE	= ± 2.136 ACRES
Remaining Location	= 3,100 Cu. Yds.	TOTAL = ± 5.951 ACRES	
TOTAL CUT	= 4,440 CU. YDS.	EXCESS MATERIAL	= 4,290 Cu. Yds.
FILL	= 150 CU. YDS.	Topsoil	= 1,340 Cu. Yds.
		EXCESS UNBALANCE	= 2,950 Cu. Yds.
		(After Interim Rehabilitation)	