

LEGEND:

PROPOSED LOCATION

BILL BARRETT CORPORATION

DUTCH LAKE #6-62-23-0857BH & #6-62-23-0758BH
ON EXISTING DUTCH LAKE #16-24H PAD
SECTION 24, T6N, R62W, 6th P.M.
NW 1/4 NW 1/4



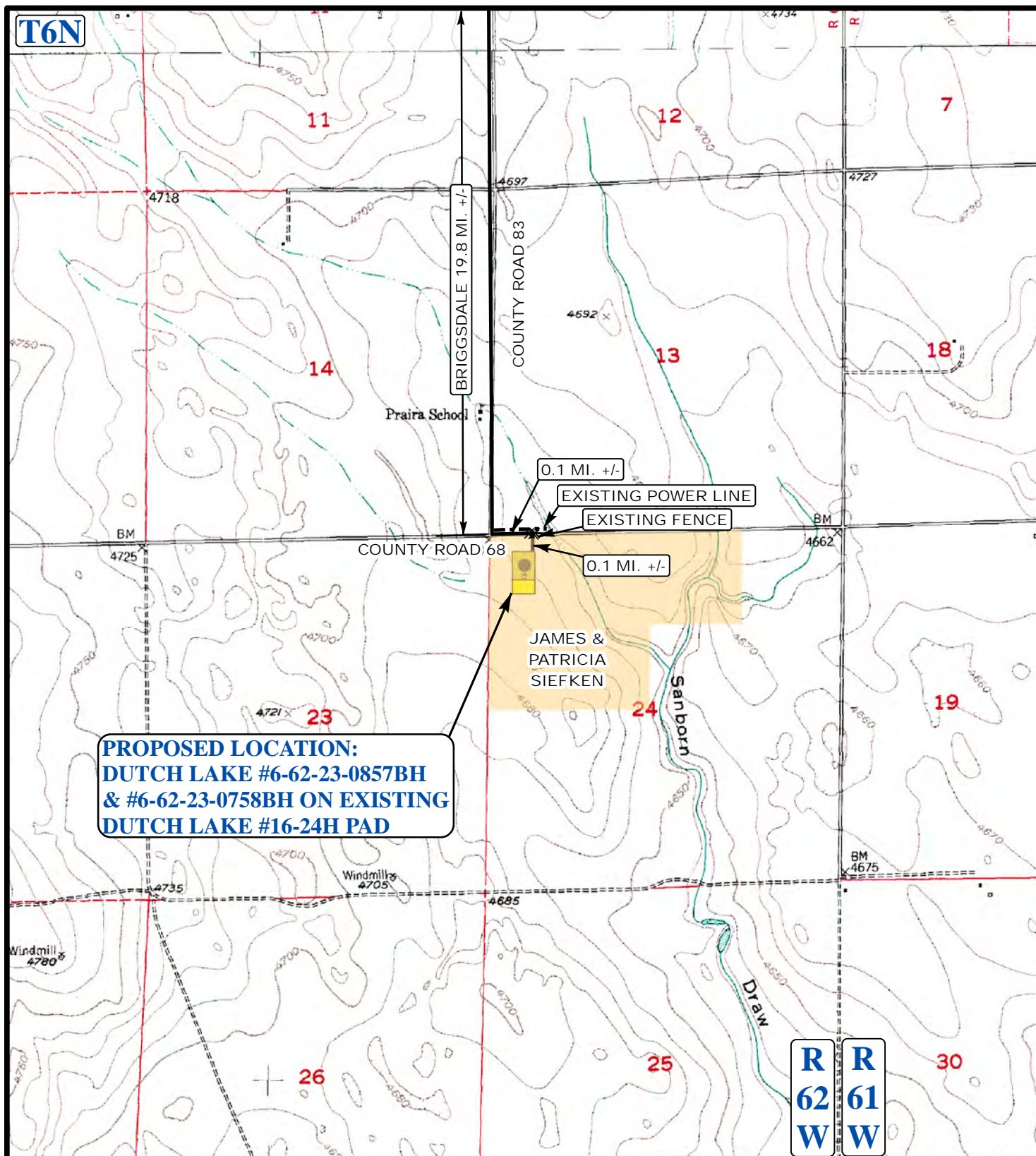
Utah Engineering & Land Surveying
85 South 200 East Vernal, Utah 84078
(435) 789-1017 * FAX (435) 789-1813

**ACCESS ROAD
MAP**

02 **01** **11**
MONTH DAY YEAR

SCALE: 1:100,000 DRAWN BY: C.A.G. REV: 06-11-13 J.L.H.





- EXISTING ROADS
- - - PROPOSED ACCESS ROAD
- - - EXISTING POWER LINE
- x x x x x EXISTING FENCE



Utah Engineering & Land Surveying
 85 South 200 East Vernal, Utah 84078
 (435) 789-1017 * FAX (435) 789-1813



BILL BARRETT CORPORATION

**DUTCH LAKE #6-62-23-0857BH & #6-62-23-0758BH
 ON EXISTING DUTCH LAKE #16-24H PAD
 SECTION 24, T6N, R62W, 6th P.M.
 NW 1/4 NW 1/4**

**ACCESS ROAD
 MAP**

02 01 11
 MONTH DAY YEAR

SCALE: 1"= 2000' DRAWN BY: C.A.G. REV: 06-11-13 J.L.H.

B
 TOPO

BILL BARRETT CORPORATION
DUTCH LAKE #6-62-23-0857BH & #6-62-23-0758BH
ON EXISTING DUTCH LAKE #16-24H PAD
SECTION 24, T6N, R62W, 6th P.M.

PROCEED IN A SOUTHERLY, THEN SOUTHWESTERLY DIRECTION FROM BRIGGSDALE, COLORADO ALONG HIGHWAY 392 APPROXIMATELY 9.7 MILES TO THE JUNCTION OF THIS ROAD AND COUNTY ROAD 74 TO THE EAST; TURN LEFT AND PROCEED IN AN EASTERLY DIRECTION APPROXIMATELY 7.1 MILES TO THE JUNCTION OF THIS ROAD AND COUNTY ROAD 83 TO THE SOUTH; TURN RIGHT AND PROCEED IN A SOUTHERLY DIRECTION APPROXIMATELY 3.0 MILES TO THE JUNCTION OF THIS ROAD AND COUNTY ROAD 68 TO THE EAST; TURN LEFT AND PROCEED IN AN EASTERLY DIRECTION APPROXIMATELY 0.1 MILES TO THE JUCTION OF THIS ROAD AND AN EXISTING ROAD TO THE SOUTH; TURN RIGHT AND PROCEED IN A SOUTHERLY DIRECTION APPROXIMATELY 0.1 MILES TO THE PROPOSED LOCATION.

TOTAL DISTANCE FROM BRIGGSDALE, COLORADO TO THE EXISTING WELL LOCATION IS APPROXIMATELY 20.0 MILES.