

T10N, R58W, 6th P.M.

WHITING OIL & GAS CORP.

2011 UELS Alum. Cap,  
#17492  
Lat: 40.830928°  
Long: 103.880225°

2012 UELS Alum. Cap,  
#28285, 0.3' High  
Lat: 40.831072°  
Long: 103.870636°

2012 UELS Alum. Cap,  
#28285, 0.5' Below Ground  
Lat: 40.831214°  
Long: 103.861069°

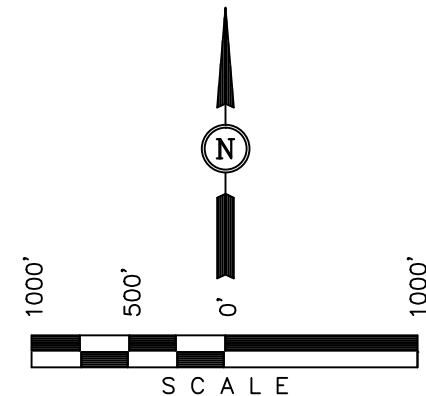
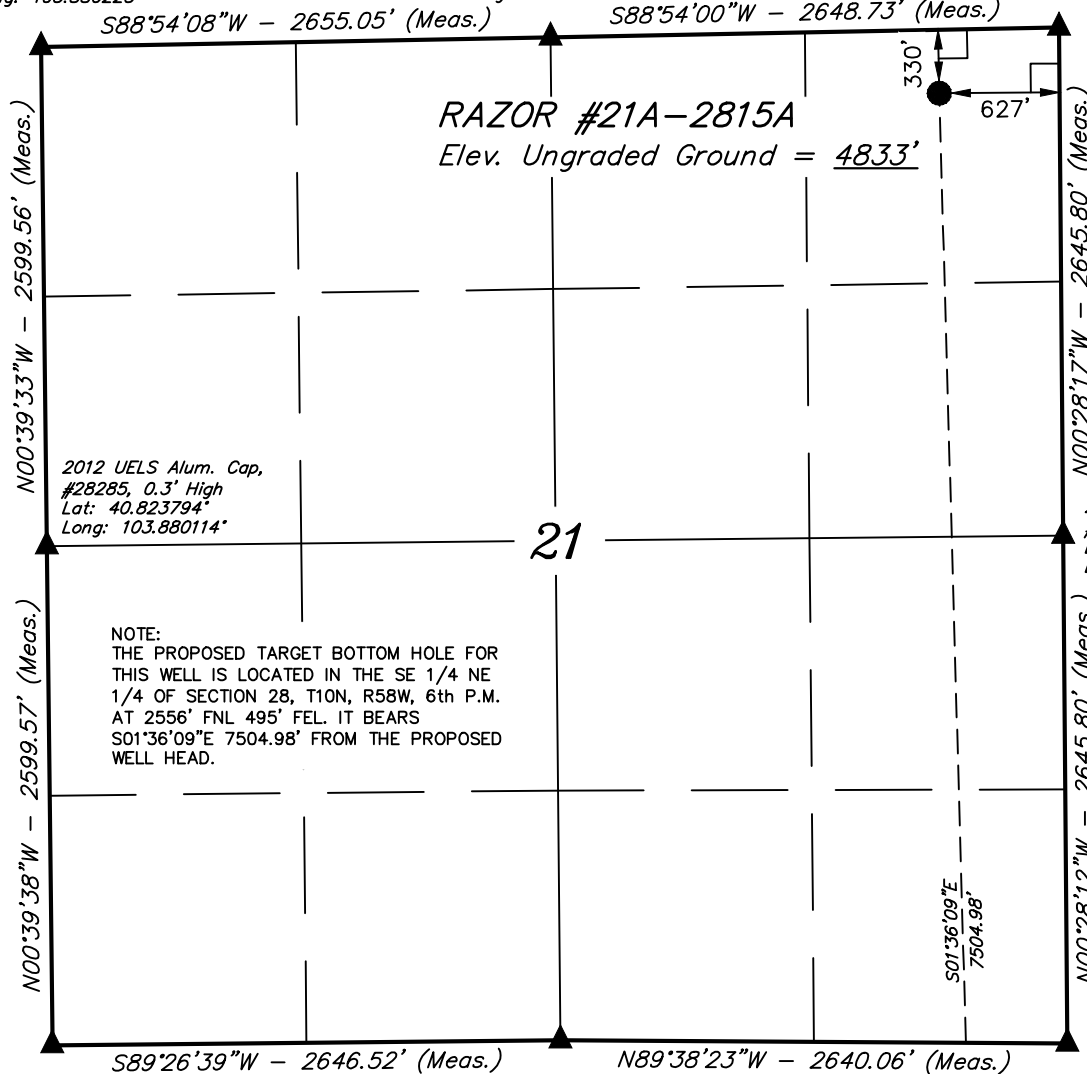
Well location, RAZOR #21A-2815A (SURFACE LOCATION), located as shown in the NE 1/4 NE 1/4 of Section 21, T10N, R58W, 6th P.M., Weld County, Colorado.

BASIS OF ELEVATION

SPOT ELEVATION LOCATED AT THE NORTHEAST CORNER OF SECTION 15, T9N, R58W, 6th P.M. TAKEN FROM THE GATEHOOK SPRING, QUADRANGLE, COLORADO, WELD COUNTY, 7.5 MINUTE QUAD (TOPOGRAPHIC MAP) PUBLISHED BY THE UNITED STATES DEPARTMENT OF THE INTERIOR, GEOLOGICAL SURVEY. SAID ELEVATION IS MARKED AS BEING 4679 FEET.

BASIS OF BEARINGS

BASIS OF BEARINGS IS A G.P.S. OBSERVATION.



CERTIFICATE

THIS IS TO CERTIFY THAT THE ABOVE PLAT WAS PREPARED FROM FIELD NOTES OF ACTUAL SURVEYS MADE BY ME OR UNDER MY SUPERVISION AND THAT THE SAME ARE TRUE AND CORRECT TO THE BEST OF MY KNOWLEDGE AND BELIEF.

REGISTERED LAND SURVEYOR  
REGISTRATION NO. 17492  
STATE OF COLORADO

REV: 06-29-13 B.D.H.

UINTAH ENGINEERING & LAND SURVEYING  
85 SOUTH 200 EAST - VERNAL, UTAH 84078  
(435) 789-1017

LEGEND:

- └─┘ = 90° SYMBOL
- = PROPOSED WELL HEAD.
- ▲ = SECTION CORNERS LOCATED.

Target Bottom Hole

PDOP = 2.1

NAD 83 (SURFACE LOCATION)
LATITUDE = 40°49'48.98" (40.830272)
LONGITUDE = 103°51'47.96" (103.863322)
NAD 27 (SURFACE LOCATION)
LATITUDE = 40°49'49.03" (40.830286)
LONGITUDE = 103°51'46.15" (103.862819)

SCALE 1" = 1000'	DATE SURVEYED: 02-22-13	DATE DRAWN: 02-26-13
PARTY D.N. G.W. J.S.	REFERENCES G.L.O. PLAT	
WEATHER COLD	FILE WHITING OIL & GAS CORP.	

T10N, R58W, 6th P.M.

WHITING OIL & GAS CORP.

2010 UELS Alum. Cap,  
Flush W/ Ground  
#17492  
Lat: 40.816664  
Long: 103.880000

Surface Location

2010 UELS Alum. Cap,  
0.5' Below Ground  
Lat: 40.816692  
Long: 103.860906

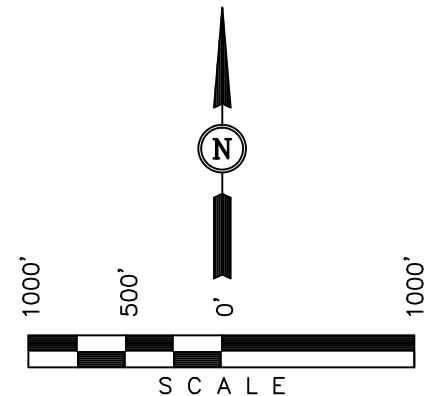
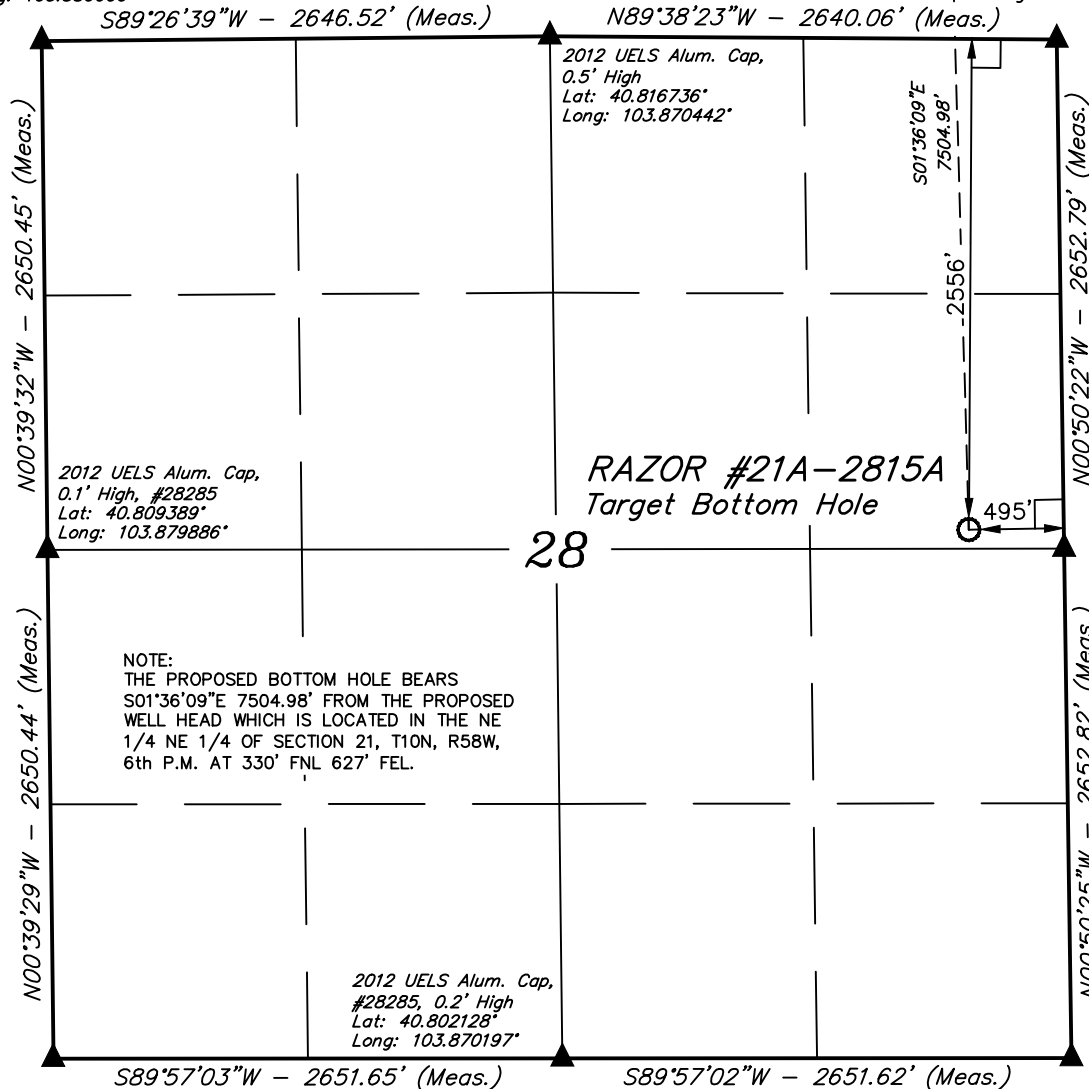
Well location, RAZOR #21A-2815A (TARGET BOTTOM HOLE), located as shown in the SE 1/4 NE 1/4 of Section 28, T10N, R58W, 6th P.M., Weld County, Colorado.

BASIS OF ELEVATION

SPOT ELEVATION LOCATED AT THE NORTHEAST CORNER OF SECTION 15, T9N, R58W, 6th P.M. TAKEN FROM THE GATEHOOK SPRING, QUADRANGLE, COLORADO, WELD COUNTY, 7.5 MINUTE QUAD (TOPOGRAPHIC MAP) PUBLISHED BY THE UNITED STATES DEPARTMENT OF THE INTERIOR, GEOLOGICAL SURVEY. SAID ELEVATION IS MARKED AS BEING 4679 FEET.

BASIS OF BEARINGS

BASIS OF BEARINGS IS A G.P.S. OBSERVATION.



CERTIFICATE

THIS IS TO CERTIFY THAT THE ABOVE PLAT WAS PREPARED FROM FIELD NOTES OF ACTUAL SURVEYS MADE BY ME OR UNDER MY SUPERVISION AND THAT THE SAME ARE TRUE AND CORRECT TO THE BEST OF MY KNOWLEDGE AND BELIEF.

REGISTERED LAND SURVEYOR  
REGISTRATION NO. 17492  
STATE OF COLORADO

REVISED: 04-04-13

**UINTAH ENGINEERING & LAND SURVEYING**  
**85 SOUTH 200 EAST - VERNAL, UTAH 84078**  
**(435) 789-1017**

2010 UELS Alum. Cap,  
0.3' High  
Lat: 40.802117  
Long: 103.879772

2010 UELS Alum. Cap,  
0.5' Below Ground  
Lat: 40.802136  
Long: 103.860622

**LEGEND:**

- └─┘ = 90° SYMBOL
- = PROPOSED WELL HEAD.
- ▲ = SECTION CORNERS LOCATED.

NAD 83 (TARGET BOTTOM HOLE)	
LATITUDE	= 40°48'34.87" (40.809686)
LONGITUDE	= 103°51'45.21" (103.862558)
NAD 27 (TARGET BOTTOM HOLE)	
LATITUDE	= 40°48'34.92" (40.809700)
LONGITUDE	= 103°51'43.40" (103.862056)

SCALE 1" = 1000'	DATE SURVEYED: 02-22-13	DATE DRAWN: 02-26-13
PARTY D.N. G.W. J.S.	REFERENCES G.L.O. PLAT	
WEATHER COLD	FILE	WHITING OIL & GAS CORP.