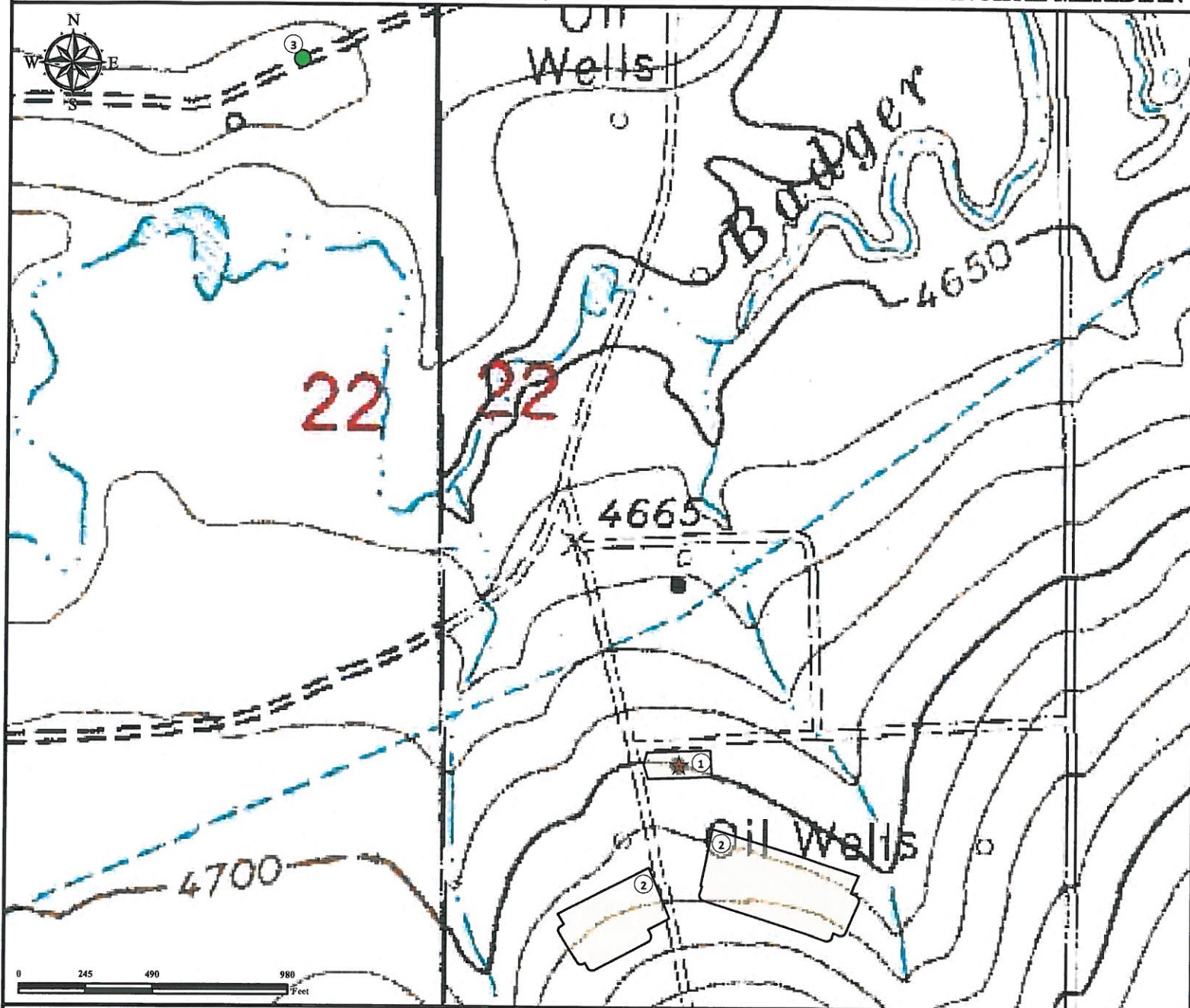


Reference Area Map

BADGER CREEK 22-N FACILITY

SE¼ SE¼ SECTION 22, TOWNSHIP 2 SOUTH, RANGE 57 WEST OF THE 6TH PRINCIPAL MERIDIAN



1. Proposed BADGER CREEK 22-N Facility.
2. Proposed BADGER CREEK 22-N Evaporation Ponds.
3. Reference Photo Point.

Legend



Reference Point



Reference Photo Point



Proposed Facility

Reference Location

** All measurements are made from

● Reference Photo Point **

Lat: 39.867079° Long: -103.752293° (NAD83)
Elevation: 4689 Feet

Surface Use: Rangeland



Use our resources to find yours!

www.petro-fs.com
(303) 928-7128

Field Date: 05/21/2013
Drafting Date: 06/20/2013
Drafter: CPO
Revision: 2

Data Sources:

- TOPO courtesy of USGS

Prepared for:



BAYSWATER
EXPLORATION AND PRODUCTION, LLC