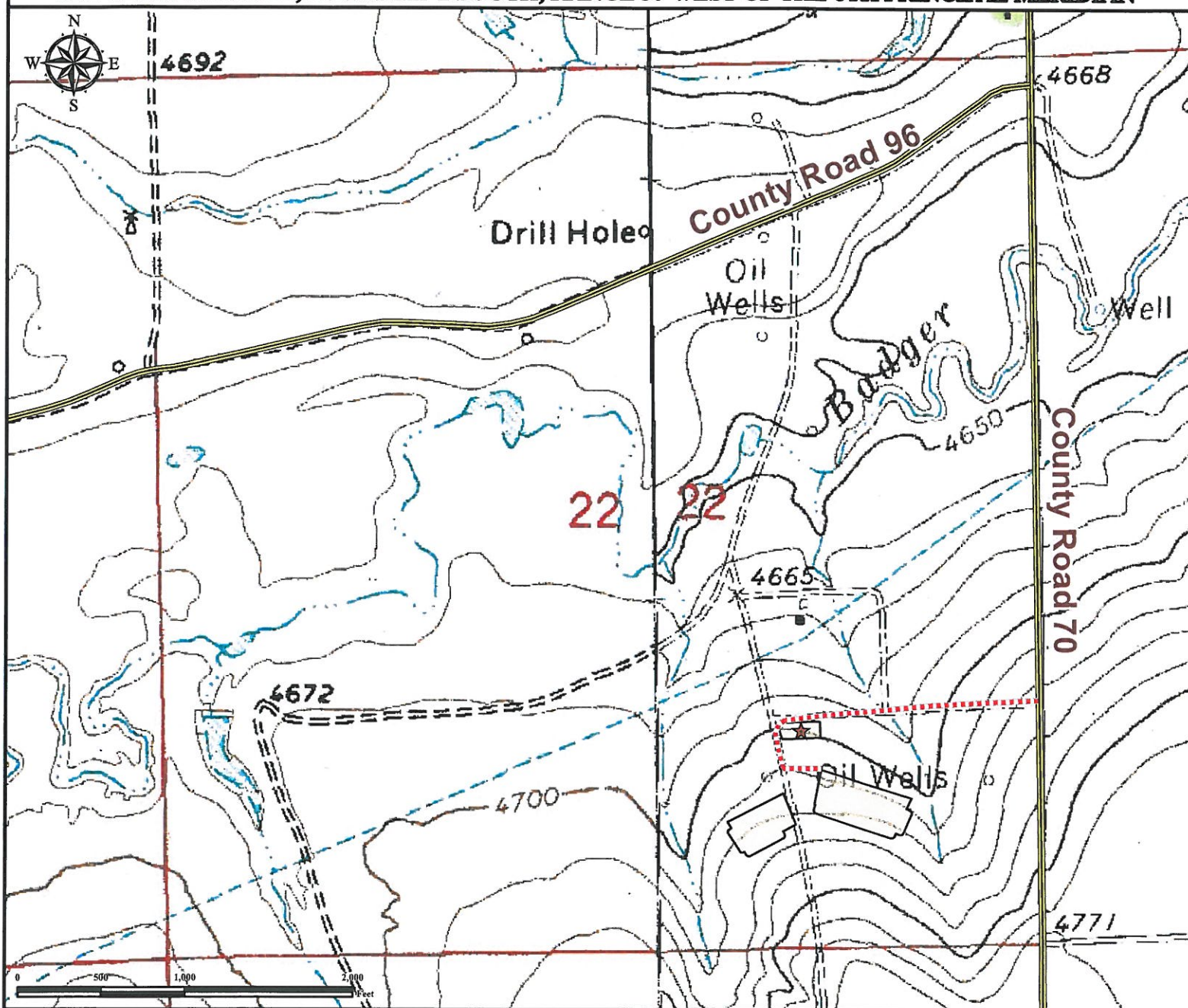


# Access Road Map

## BADGER CREEK 22-N FACILITY

SE¼ SE¼ SECTION 22, TOWNSHIP 2 SOUTH, RANGE 57 WEST OF THE 6TH PRINCIPAL MERIDIAN



**From Byers, CO:** From the intersection of Highway 36/Main St and Interstate I-70/Highway 287, Drive East on Highway 36/Main St for ±26.6 miles to County Road 70.

**Turn Left** on County Road 70 and proceed North ±8.3 miles to proposed access road.

**Turn Left** on proposed access road and drive ±0.39 miles to proposed facility.

Total distance from Byers, CO to proposed facility location is ±35.19 miles.

### Legend

- ★ Reference Point
- Public Road
- Proposed Facility
- Proposed Access Road

### Reference Location

\*\* All measurements are made from  
★ Reference Point \*\*

Lat: 39.859970° Long: -103.747455° (NAD83)  
Elevation: 4713 Feet



Use our resources to find yours!

[www.petro-fs.com](http://www.petro-fs.com)  
(303) 928-7128

Field Date: 05/21/2013  
Drafting Date: 06/20/2013  
Drafter: CPO  
Revision: 2

Data Sources:

- TOPO courtesy of USGS

Prepared for:

BAYSWATER  
EXPLORATION AND PRODUCTION, LLC