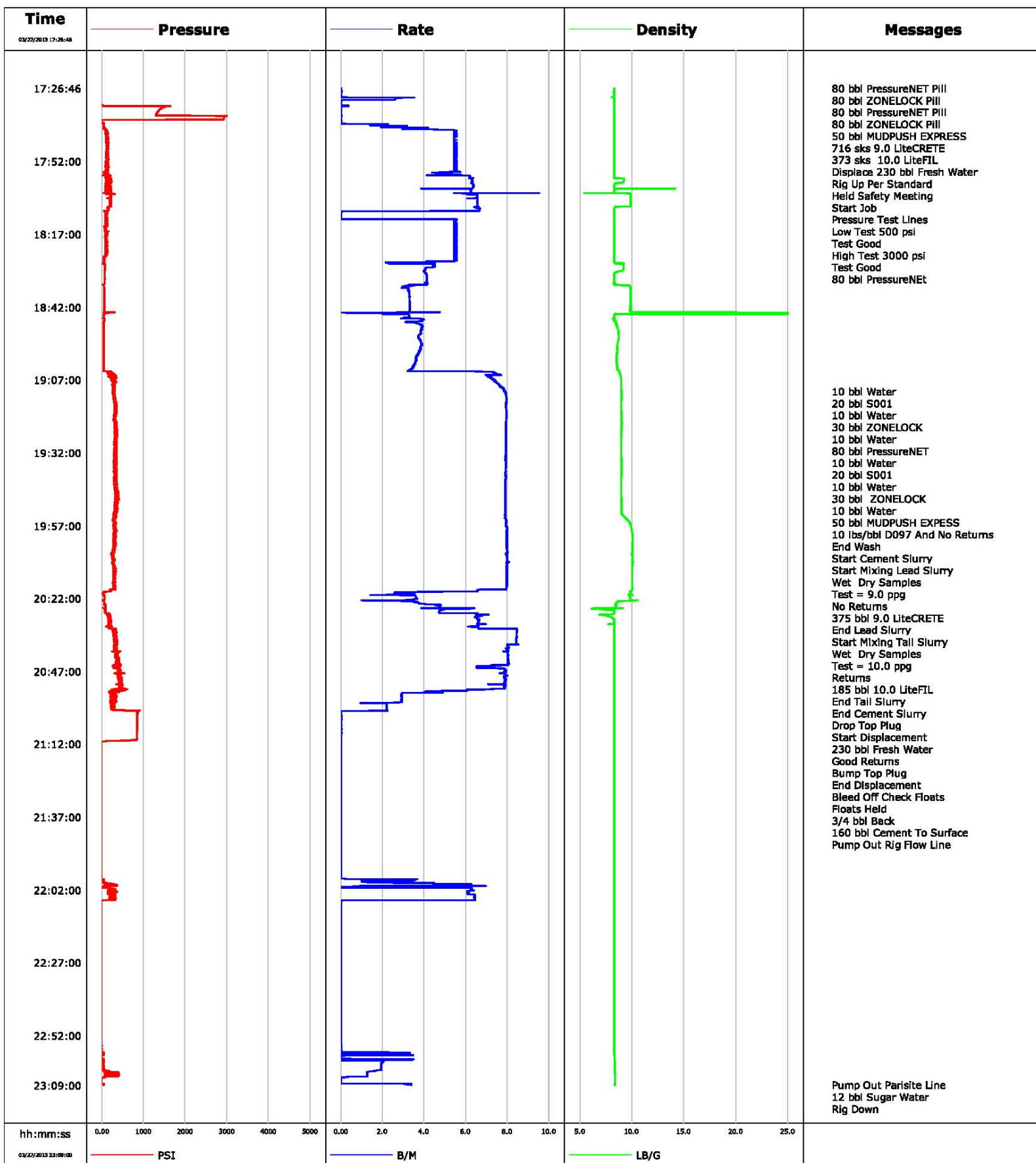


Well SG WD09B-30
Field Story Gulch
Engineer Jordan Moreland
Country United States

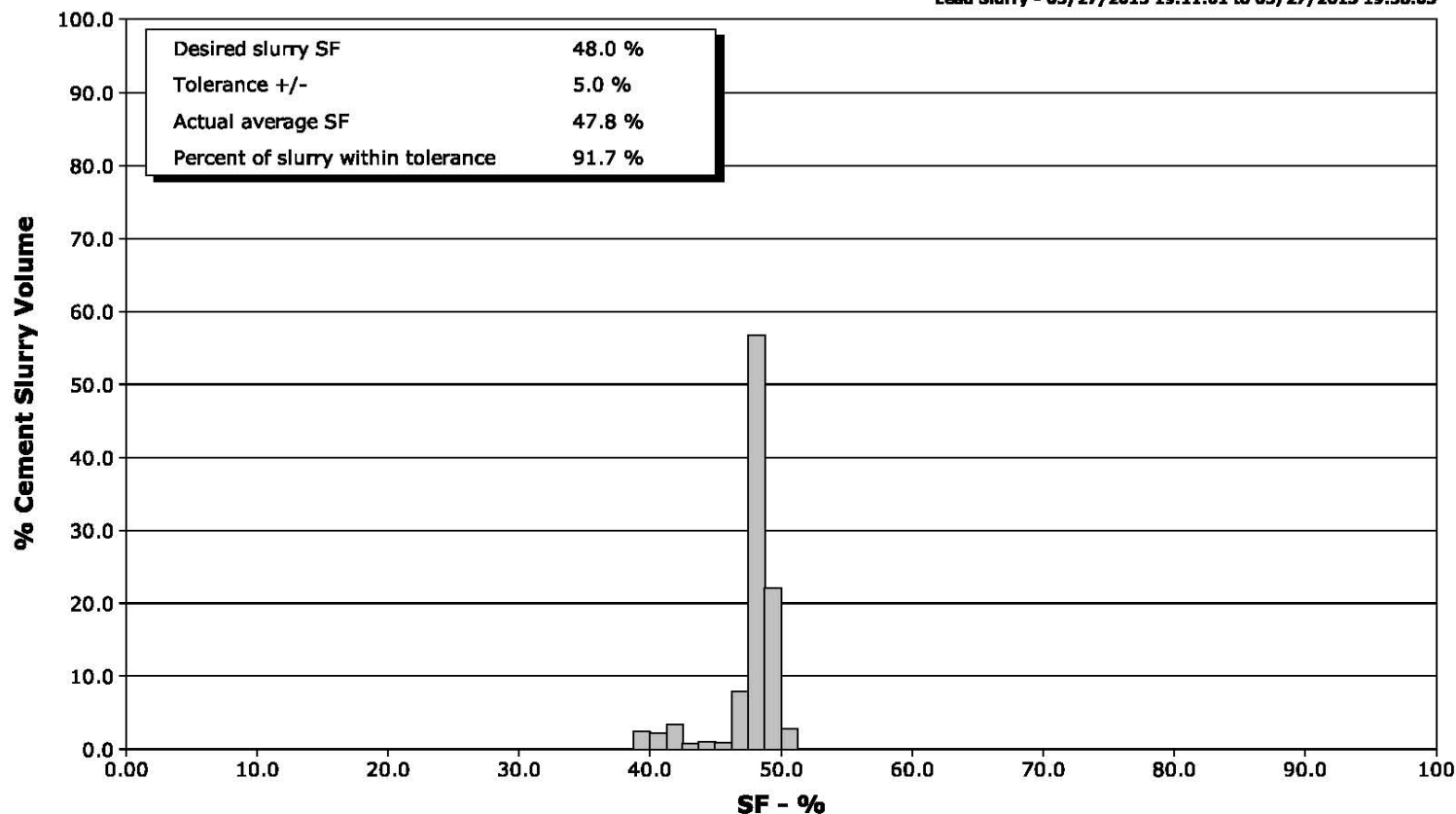
Client Encana
SIR No.
Job Type 9 5/8 Surface
Job Date 03-27-2013



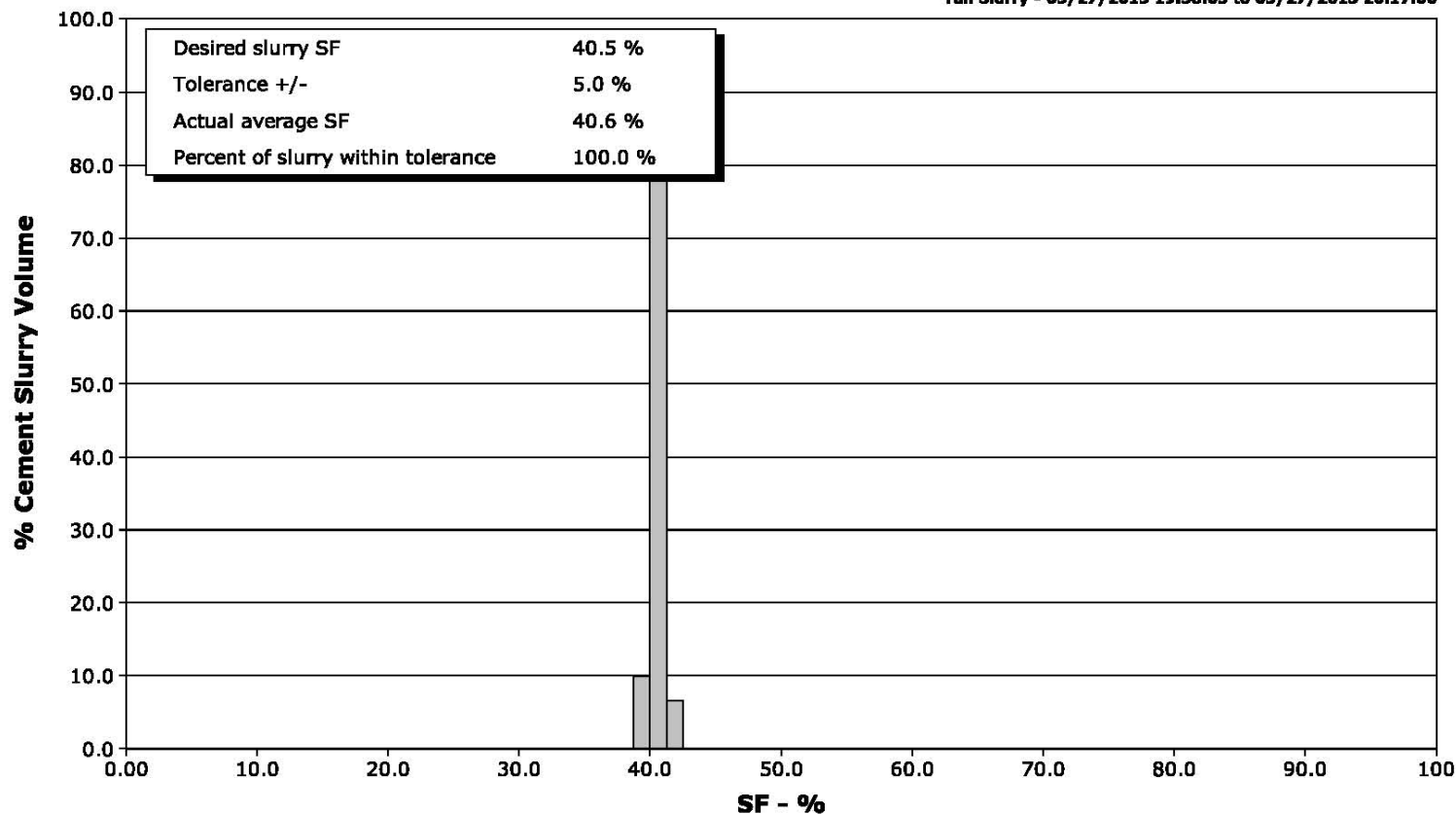
Well SG WD09B-30
Field Story Gulch
Engineer Jordan Moreland
Country United States

Client Encana
SIR No.
Job Type 9 5/8 Surface
Job Date 03-27-2013

Lead Slurry - 03/27/2013 19:11:01 to 03/27/2013 19:58:05



Tail Slurry - 03/27/2013 19:58:05 to 03/27/2013 20:17:00



Cementing Service Report

				Customer		Job Number	
				Encana		C610-01207	
Well			Location (legal)		Schlumberger Location		Job Start
SG WD09B-30			N30		GCO		Mar/27/2013
Field		Formation Name/Type		Deviation	Bit Size	Well MD	Well TVD
Story Gulch		Shale			14.8 in		
County		State/Province		BHP	BHST	BHCT	Pore Press. Gradient
Garfield		Colorado					
Well Master		API/UWI		120 degF		90 degF	
Rig Name		Drilled For	Service Via	Casing/Liner			
Patterson 306		Injection	Land	Depth, ft	Size, in	Weight, lb/ft	Grade
Offshore Zone		Well Class	Well Type	3026.0	9.630	36.0	J55
		New	Development	0.0	0.000	0.0	8RD
Drilling Fluid Type		Max. Density	Plastic Viscosity	Tubing/Drill Pipe			
				Depth,	Size,	Weight,	Grade
Service Line		Job Type					
Cementing		9 5/8 Surface					
Max. Allowed Tub. Press		Max. Allowed Ann. Press	WH Connection	Perforations/Open Hole			
3000 psi			Single Cement head	Top,	Bottom,	No. of Shots	Total Interval
Service Instructions Rate And Density Checked 80 bbl PressureNET 10 bbl Water 20 bbl S001 10 bbl Water 30 bbl ZONELOCK 10 bbl Water 80 bbl PressureNET 10 bbl Water 20 bbl S001							
Treat Down		Displacement		Packer Type		Packer Depth	
Casing		230.0 bbl					
Tubing Vol.		Casing Vol.		Annular Vol.		Openhole Vol.	
		232.0 bbl		384.0 bbl		636.0 bbl	
Casing/Tubing Secured		1 Hole Vol. Circulated prior to Cement		Casing Tools		Squeeze Job	
<input checked="" type="checkbox"/>		<input checked="" type="checkbox"/>					
Lift Pressure		1497 psi		Shoe Type		Guide	
Pipe Rotated		Pipe Reciprocated		Shoe Depth		Tool Type	
<input type="checkbox"/>		<input type="checkbox"/>		3026.0 ft			
No. Centralizers		Top Plugs	Bottom Plugs	Stage Tool Type		Tool Depth	
		1					
Cement Head Type		Single		Stage Tool Depth		Tail Pipe Size	
Job Scheduled For		Arrived on Location	Leave Location	Collar Type		Tail Pipe Depth	
Mar/27/2013		Mar/27/2013	Mar/27/2013	Float			
				Collar Depth		Seq. Total Vol.	
				2980.0 ft			
Date	Time 24-hr clock	Treating Pressure PSI	Flow Rate B/M	Density LB/G	Volume BBL	Message	
01/01/1970	00:00:00					Started Acquisition	
01/01/1970	00:00:00					Stopped Acquisition	
03/27/2013	16:48:29					Started Acquisition	
03/27/2013	17:26:46					80 bbl PressureNET Pill	
03/27/2013	17:26:46					80 bbl ZONELOCK Pill	
03/27/2013	17:26:46					80 bbl PressureNET Pill	
03/27/2013	17:26:46					80 bbl ZONELOCK Pill	
03/27/2013	17:26:46					50 bbl MUDPUSH EXPRESS	
03/27/2013	17:26:46					716 sks 9.0 LiteCRETE	
03/27/2013	17:26:46					373 sks 10.0 LiteFIL	
03/27/2013	17:26:46	-62	0.0	8.31	0.0		
03/27/2013	17:26:47					Displace 230 bbl Fresh Water	
03/27/2013	17:26:47					Rig Up Per Standard	
03/27/2013	17:26:47					Held Safety Meeting	
03/27/2013	17:26:47	-61	0.0	8.31	0.0		
03/27/2013	17:26:49					Start Job	
03/27/2013	17:26:49	-61	0.0	8.31	0.0		
03/27/2013	17:26:51					Pressure Test Lines	
03/27/2013	17:26:51	-62	0.0	8.31	0.0		
03/27/2013	17:26:52					Low Test 500 psi	
03/27/2013	17:26:52					Test Good	

Well			Field		Job Start		Customer		Job Number	
SG WD09B-30			Story Gulch		Mar/27/2013		Encana		C610-01207	
Date	Time 24-hr clock	Treating Pressure PSI	Flow Rate B/M	Density LB/G	Volume BBL	Message				
03/27/2013	17:26:52					Test Good				
03/27/2013	17:26:52	-61	0.0	8.31	0.0					
03/27/2013	17:27:30	-61	0.0	8.31	0.0					
03/27/2013	17:31:40	-52	0.0	8.32	2.5					
03/27/2013	17:35:50	1307	0.0	8.32	2.6					
03/27/2013	17:39:23					80 bbl PressureNEt				
03/27/2013	17:39:23	42	2.3	8.32	3.2					
03/27/2013	17:40:00	44	2.2	8.32	4.6					
03/27/2013	17:44:10	133	5.4	8.31	25.0					
03/27/2013	17:48:20	114	5.4	8.32	47.8					
03/27/2013	17:52:30	110	5.4	8.32	70.6					
03/27/2013	17:56:40	71	5.6	8.32	92.9					
03/27/2013	18:00:50	192	6.4	8.32	119.0					
03/27/2013	18:05:00	222	6.6	9.86	145.4					
03/27/2013	18:09:10	89	0.1	8.32	172.2					
03/27/2013	18:13:20	118	5.4	8.32	180.2					
03/27/2013	18:17:30	107	5.6	8.32	203.0					
03/27/2013	18:21:40	91	5.4	8.32	225.7					
03/27/2013	18:25:50	44	5.6	8.32	248.5					
03/27/2013	18:30:00	66	4.1	8.51	265.9					
03/27/2013	18:34:10	67	4.2	8.30	283.1					
03/27/2013	18:38:20	60	3.3	9.86	296.7					
03/27/2013	18:42:30	58	3.3	9.86	310.5					
03/27/2013	18:46:40	64	3.9	8.31	323.3					
03/27/2013	18:50:50	46	3.8	8.71	339.1					
03/27/2013	18:55:00	44	3.9	8.64	355.0					
03/27/2013	18:59:10	43	3.6	8.56	370.7					
03/27/2013	19:03:20	39	3.4	8.63	385.5					
03/27/2013	19:07:30	298	7.4	8.97	412.7					
03/27/2013	19:10:52					10 bbl Water				
03/27/2013	19:10:52					20 bbl S001				
03/27/2013	19:10:52					10 bbl Water				
03/27/2013	19:10:52					30 bbl ZONELOCK				
03/27/2013	19:10:52					10 bbl Water				
03/27/2013	19:10:52					80 bbl PressureNET				
03/27/2013	19:10:52	268	7.9	9.02	438.5					
03/27/2013	19:10:53					10 bbl Water				
03/27/2013	19:10:53					20 bbl S001				
03/27/2013	19:10:53					10 bbl Water				
03/27/2013	19:10:53					30 bbl ZONELOCK				
03/27/2013	19:10:53					10 bbl Water				
03/27/2013	19:10:53	290	7.9	9.02	438.6					
03/27/2013	19:10:56					50 bbl MUDPUSH EXPRESS				
03/27/2013	19:10:56					10 lbs/bbl D097 And No Returns				
03/27/2013	19:10:56	293	7.9	9.02	439.0					
03/27/2013	19:10:57					End Wash				
03/27/2013	19:10:57	296	7.9	9.02	439.2					
03/27/2013	19:10:59					Start Cement Slurry				
03/27/2013	19:10:59	279	7.9	9.02	439.4					
03/27/2013	19:11:01					Start Mixing Lead Slurry				
03/27/2013	19:11:01	258	7.9	9.02	439.7					
03/27/2013	19:11:02					Wet Dry Samples				
03/27/2013	19:11:02					Test = 9.0 ppg				
03/27/2013	19:11:02					No Returns				

Well			Field	Job Start		Customer	Job Number
SG WD09B-30			Story Gulch	Mar/27/2013		Encana	C610-01207
Date	Time 24-hr clock	Treating Pressure PSI	Flow Rate B/M	Density LB/G	Volume BBL	Message	
03/27/2013	19:11:02	262	7.9	9.02	439.8		
03/27/2013	19:11:40	296	7.9	9.03	444.8		
03/27/2013	19:15:50	320	7.9	8.96	477.9		
03/27/2013	19:20:00	290	7.9	9.00	511.0		
03/27/2013	19:24:10	364	7.9	9.01	544.1		
03/27/2013	19:28:20	323	7.9	8.98	577.1		
03/27/2013	19:32:30	331	7.9	8.99	610.2		
03/27/2013	19:36:40	343	7.9	9.03	643.2		
03/27/2013	19:40:50	299	7.9	8.99	676.2		
03/27/2013	19:45:00	378	7.9	8.96	709.2		
03/27/2013	19:49:10	313	7.9	9.02	742.1		
03/27/2013	19:53:20	342	7.9	9.13	775.0		
03/27/2013	19:57:30	290	8.0	9.94	808.0		
03/27/2013	19:58:05					End Lead Slurry	
03/27/2013	19:58:05					Start Mixing Tail Slurry	
03/27/2013	19:58:05	290	8.0	9.97	812.7		
03/27/2013	19:58:07					Wet Dry Samples	
03/27/2013	19:58:07					Test = 10.0 ppg	
03/27/2013	19:58:07					Returns	
03/27/2013	19:58:07					185 bbl 10.0 LiteFIL	
03/27/2013	19:58:07	288	8.0	9.97	813.0		
03/27/2013	20:01:40	298	8.0	10.14	841.3		
03/27/2013	20:05:50	282	8.0	10.05	874.5		
03/27/2013	20:10:00	273	8.0	10.07	907.8		
03/27/2013	20:14:10	293	8.0	10.02	941.0		
03/27/2013	20:17:00					End Tail Slurry	
03/27/2013	20:17:00	275	8.0	10.02	963.6		
03/27/2013	20:17:37					End Cement Slurry	
03/27/2013	20:17:37	322	8.0	10.02	968.6		
03/27/2013	20:18:20	287	8.0	10.05	974.3		
03/27/2013	20:22:30	60	3.5	9.77	993.4		
03/27/2013	20:23:41					Drop Top Plug	
03/27/2013	20:23:41	63	3.8	8.49	997.1		
03/27/2013	20:23:44					Start Displacement	
03/27/2013	20:23:44	62	3.8	8.47	997.2		
03/27/2013	20:23:47					230 bbl Fresh Water	
03/27/2013	20:23:47	62	3.8	8.47	997.4		
03/27/2013	20:23:48					Good Returns	
03/27/2013	20:23:48	62	3.9	8.46	997.5		
03/27/2013	20:26:40	98	4.7	8.32	1011.2		
03/27/2013	20:30:50	169	6.6	8.03	1037.9		
03/27/2013	20:35:00	286	8.4	8.32	1070.1		
03/27/2013	20:39:10	334	8.0	8.32	1104.7		
03/27/2013	20:43:20	370	8.0	8.31	1138.1		
03/27/2013	20:47:30	446	7.9	8.31	1170.0		
03/27/2013	20:51:40	441	7.8	8.31	1202.8		
03/27/2013	20:55:50	227	2.9	8.31	1225.2		
03/27/2013	21:00:00	282	2.2	8.31	1235.5		
03/27/2013	21:04:10	849	0.0	8.31	1236.9		
03/27/2013	21:08:20	844	0.0	8.31	1237.0		
03/27/2013	21:12:30	-12	0.0	8.32	1237.0		
03/27/2013	21:16:40	-11	0.0	8.32	1237.1		
03/27/2013	21:18:15					Bump Top Plug	
03/27/2013	21:18:15	-11	0.0	8.32	1237.1		

Well			Field		Job Start		Customer		Job Number	
SG WD09B-30			Story Gulch		Mar/27/2013		Encana		C610-01207	
Date	Time 24-hr clock	Treating Pressure PSI	Flow Rate B/M	Density LB/G	Volume BBL	Message				
03/27/2013	21:18:16	-11	0.0	8.32	1237.1					
03/27/2013	21:18:17					Bleed Off Check Floats				
03/27/2013	21:18:17					Floats Held				
03/27/2013	21:18:17					3/4 bbl Back				
03/27/2013	21:18:17					160 bbl Cement To Surface				
03/27/2013	21:18:17	-11	0.0	8.32	1237.1					
03/27/2013	21:18:18					Pump Out Rig Flow Line				
03/27/2013	21:18:18	-11	0.0	8.32	1237.1					
03/27/2013	21:20:50	-11	0.0	8.32	1237.1					
03/27/2013	21:25:00	-11	0.0	8.32	1237.2					
03/27/2013	21:29:10	-11	0.0	8.32	1237.3					
03/27/2013	21:33:20	-9	0.0	8.32	1237.3					
03/27/2013	21:37:30	-10	0.0	8.32	1237.4					
03/27/2013	21:41:40	-10	0.0	8.32	1237.4					
03/27/2013	21:45:50	-10	0.0	8.32	1237.5					
03/27/2013	21:50:00	-10	0.0	8.32	1237.5					
03/27/2013	21:54:10	-9	0.0	8.32	1237.6					
03/27/2013	21:58:20	49	3.0	8.31	1237.8					
03/27/2013	22:02:30	131	6.1	8.32	1254.8					
03/27/2013	22:06:40	-7	0.0	8.32	1274.8					
03/27/2013	22:10:50	-3	0.0	8.32	1274.9					
03/27/2013	22:15:00	-3	0.0	8.32	1274.9					
03/27/2013	22:19:10	-3	0.0	8.32	1275.0					
03/27/2013	22:23:20	-3	0.0	8.32	1275.0					
03/27/2013	22:27:30	-2	0.0	8.32	1275.1					
03/27/2013	22:31:40	-3	0.0	8.32	1275.1					
03/27/2013	22:35:50	-2	0.0	8.32	1275.2					
03/27/2013	22:40:00	-2	0.0	8.32	1275.2					
03/27/2013	22:44:10	-2	0.0	8.32	1275.3					
03/27/2013	22:48:20	-2	0.0	8.32	1275.3					
03/27/2013	22:52:30	-2	0.0	8.32	1275.4					
03/27/2013	22:56:40	-4	0.0	8.32	1275.4					
03/27/2013	23:00:50	42	2.0	8.38	1278.0					
03/27/2013	23:05:00	120	1.2	8.38	1285.6					
03/27/2013	23:08:56					Pump Out Parlsite Line				
03/27/2013	23:08:56					12 bbl Sugar Water				
03/27/2013	23:08:56					Rig Down				
03/27/2013	23:08:56	48	3.4	8.38	1288.5					
03/27/2013	23:08:58					End Job				
03/27/2013	23:08:58	48	3.4	8.38	1288.6					
03/27/2013	23:09:00	47	3.4	8.38	1288.7					

Well	SG WD09B-30	Field	Story Gulch	Job Start	Mar/27/2013	Customer	Encana	Job Number	C610-01207
------	-------------	-------	-------------	-----------	-------------	----------	--------	------------	------------

Post Job Summary

Average Pump Rates,					Volume of Fluid Injected,			
Slurry	N2	Mud	Maximum Rate		Total Slurry	Mud	Spacer	N2
Treating Pressure Summary,					Breakdown Fluid			
Maximum	Final	Average	Bump Plug to 900	Breakdown	Type	Volume		Density
Avg. N2 Percent	Designed Slurry Volume		Displacement	Mix Water Temp 64 degF	Cement Circulated to Surface?	<input checked="" type="checkbox"/>	Volume	
					Washed Thru Perfs	<input type="checkbox"/>	To	
Customer or Authorized Representative			Schlumberger Supervisor			Circulation Lost	<input type="checkbox"/>	Job Completed <input checked="" type="checkbox"/>
James Carter			Jordan Moreland			-	-	