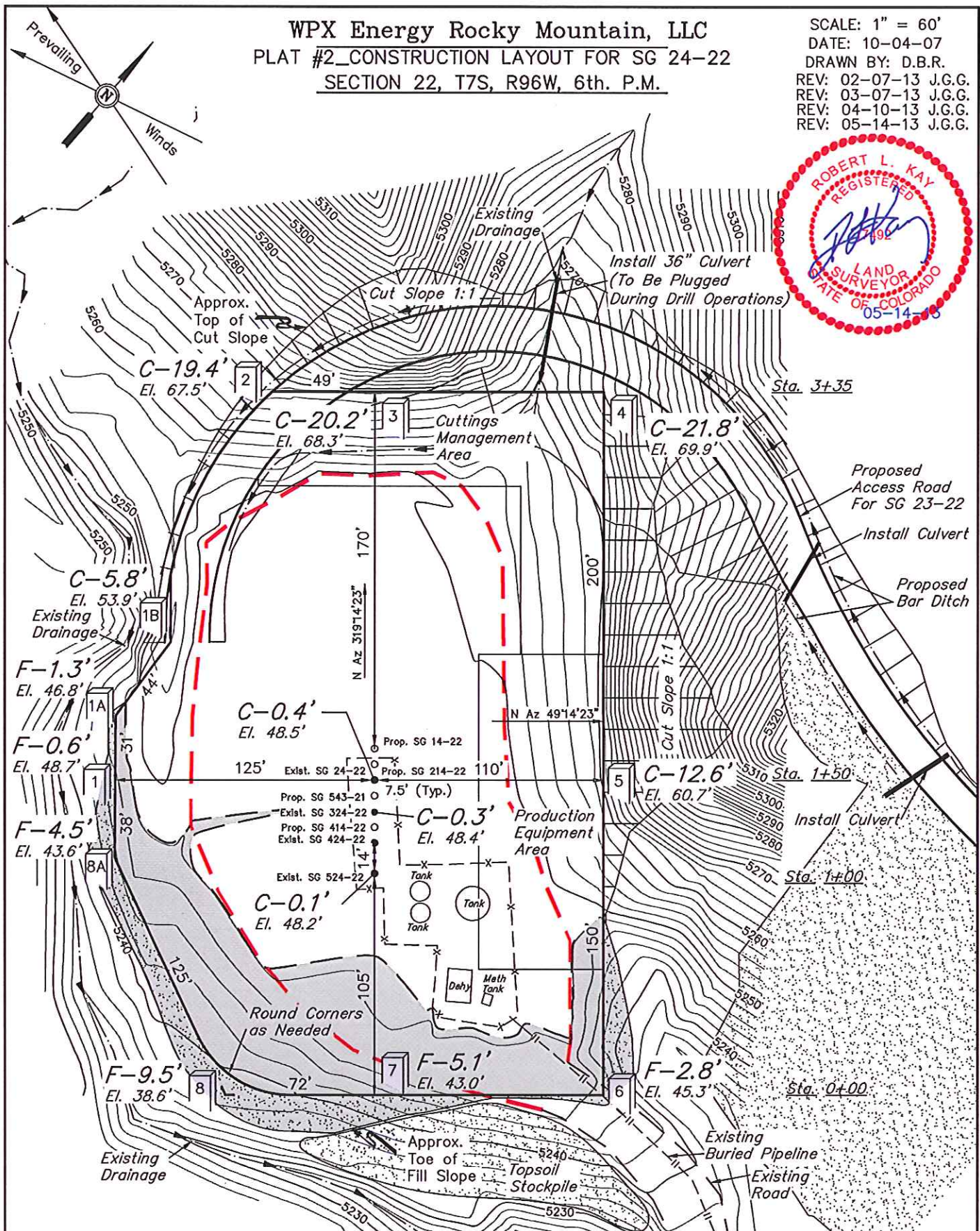


WPX Energy Rocky Mountain, LLC  
 PLAT #2\_CONSTRUCTION LAYOUT FOR SG 24-22  
 SECTION 22, T7S, R96W, 6th. P.M.

SCALE: 1" = 60'  
 DATE: 10-04-07  
 DRAWN BY: D.B.R.  
 REV: 02-07-13 J.G.G.  
 REV: 03-07-13 J.G.G.  
 REV: 04-10-13 J.G.G.  
 REV: 05-14-13 J.G.G.



Note: 2' Contour Intervals  
 Elev. Ungraded Ground At 24-22 Loc. Stake= 5248.5'  
 FINISHED GRADE ELEV. AT 24-22 LOC. STAKE = 5248.1'

UINTAH ENGINEERING & LAND SURVEYING  
 85 So. 200 East \* Vernal, Utah 84078 \* (435) 789-1017



1" = 40'  
X-Section  
Scale  
1" = 100'

# WPX Energy Rocky Mountain, LLC

## PLAT #3\_CONSTRUCTION LAYOUT

### CROSS SECTION FOR SG 24-22

SECTION 22, T7S, R96W, 6th. P.M.

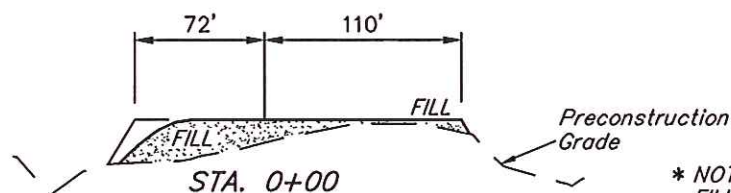
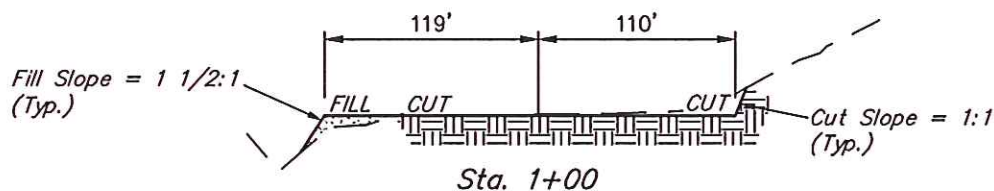
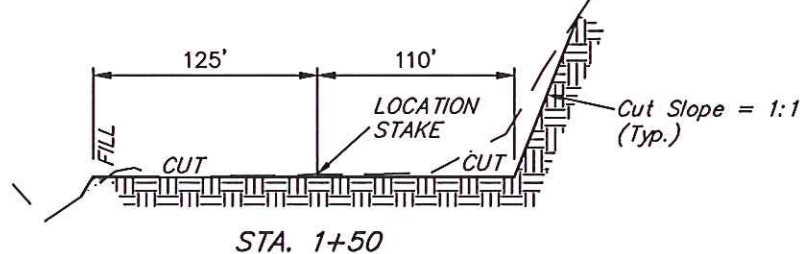
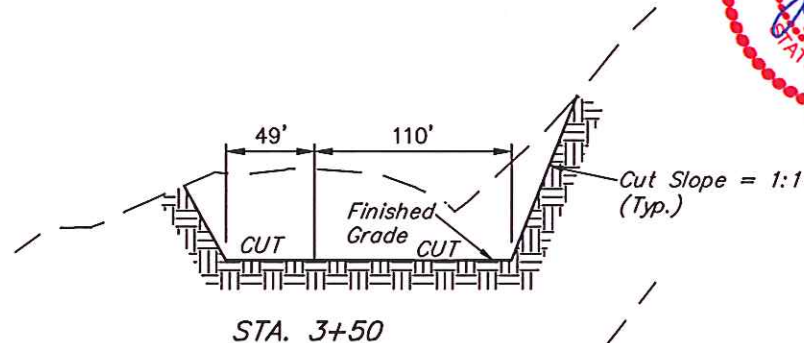
DATE: 10-04-07

DRAWN BY: D.B.R.

REV: 02-07-13 J.G.G.

REV: 03-07-13 J.G.G.

REV: 04-10-13 J.G.G.



#### NOTE:

Topsoil should not be Stripped Below Finished Grade on Substructure Area.

#### APPROXIMATE YARDAGES

(6") Topsoil Stripping = 920 Cu. Yds.  
(New Construction Only)  
Remaining Location = 10,200 Cu. Yds.  
TOTAL CUT = 11,120 CU. YDS.  
FILL = 2,140 CU. YDS.

EXCESS MATERIAL = 8,980 Cu. Yds.  
Topsoil = 920 Cu. Yds.  
EXCESS UNBALANCE = 8,060 Cu. Yds.  
(After Interim Rehabilitation)

UINTAH ENGINEERING & LAND SURVEYING  
85 So. 200 East \* Vernal, Utah 84078 \* (435) 789-1017

\* NOTE:  
FILL QUANTITY INCLUDES  
5% FOR COMPACTION  
\*\* USE EXCESS MATERIAL  
TO CONSTRUCT ROAD  
FOR SG 23-22.