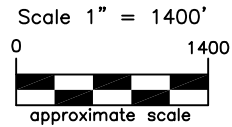


JR Land Surveying, LLC

8114 Northstar Drive
Windsor, Colorado 80528
P. 970-576-4641

WELL LOCATION CERTIFICATE

THIS MAP DOES NOT REPRESENT A BOUNDARY SURVEY



LEGEND

- ⊕ - found survey monument
- (c) - calculated dimension

In accordance with a request from Jay Knutson of EnCana Oil & Gas (USA) Inc., JR Land Surveying, LLC has determined the location of the **Vogl-McCoy 2A-5H-E267** well site to be SHL: 2603' FNL and 301' FWL, (BHL: 460' FSL and 170' FWL), as measured at ninety (90) degrees from the section lines of Sections 5 and 8, Township 2 North, Range 67 West of the 6th Principal Meridian, Weld County Colorado.

Nearest:

Building: 547' southwest
Above Ground Utility: 276' west
Public Road: 296' west
Railroad: 26,700' northwest
Property Line: 222' south
Well Window: SHL is 332' outside
Existing Well: Vogl 5-5, 303' northeast

Proposed Surface Hole Data:

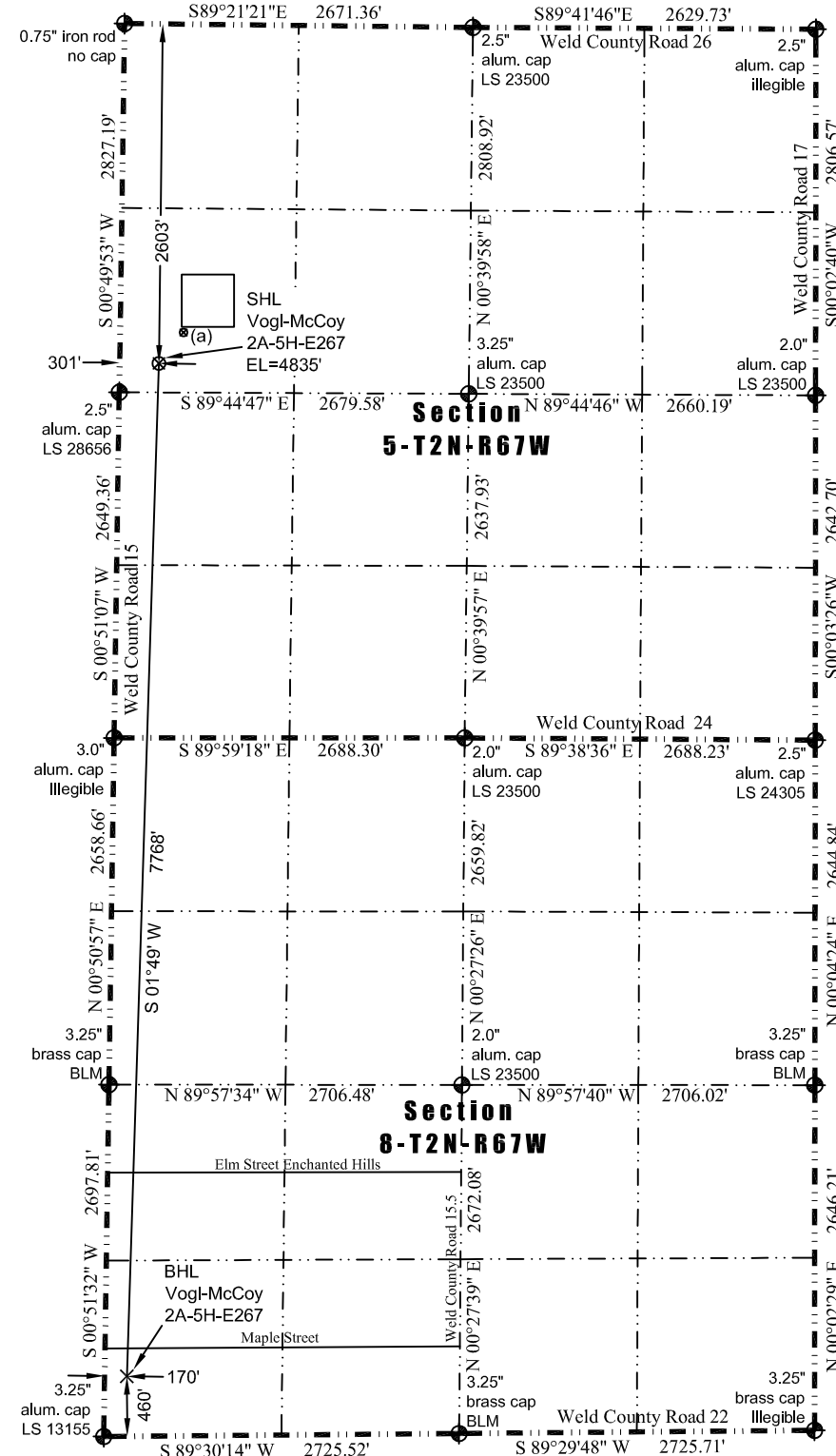
Latitude: N 40.16819° (BHL: 40.14688°)
Longitude: W 104.92243° (BHL: 104.92350°)
PDOP: 2.1

(a) Existing Well Data:

Vogl 5-5
Latitude: N 40.16884°
Longitude: W 104.92175°
FNL: 2363'
FWL: 486'
ELEV: 4838'
PDOP: 2.4

I hereby certify that this Well Location Certificate was prepared by me or under my direct supervision on 4/8/2013 for and on behalf of EnCana Oil & Gas (USA) Inc. That it is not a Land Survey Plat or an Improvement Survey Plat and that it is not to be relied upon for establishment of fences, buildings, or other future improvement lines.

John Robert McGehee LS#38219
Well: Vogl-McCoy 2A-5H-E267 WLC



Notes:

- 1) Bearings and distances based on NAD 83 Colorado North State Plane Coordinate, using RTK GPS observations taken 4/3/13 by operator John Rice.
- 2) Conversion factor to ground (1.000271871).
- 3) Elevations based on NAVD 88 GPS heights and Geoid 2003 corrections.
- 4) See Location Drawing for visible improvements within 500 feet of Pad Site.
- 5) The surface use is a cultivated field.

NOTICE: According to Colorado law you must commence any legal action based upon any defect in this W.L.C. within three years after you first discover such defect. In no event may any action based upon any defect in this W.L.C. be commenced more than ten years from this said date of the certification shown hereon.