



**Weatherford®**

**6 3/4 in. & 4 3/4 in.**  
**WeatherfordM/LWD™**  
**Gamma Ray & Resistivity**  
**1 in. & 5 in. TRUE VERTICAL DEPTH**  
**RECORDED DATA**

Company: Anadarko Petroleum  
Well: Cannon 13C-10HZ  
Field: Wattenberg  
Rig: Xtreme 23  
County: Weld

Location		Other Services:	
Latitude:	40.1588040° N	x = 3,204,451 ft	Mag Decl: 8.62°
Longitude:	104.7685050° W	y = 1,301,538 ft	Mag Dip: 66.78°
COMPANY		Anadarko Petroleum	
WELL		Cannon 13C-10HZ	
FIELD		Wattenberg	
RIG		Xtreme 23	
COUNTY		Weld	
API #		05-123-36694	
STATE		Colorado	
Other Services:		Spectral Azimuthal Gamma, Directional, and Temperature	

Permanent Datum:	Mean Sea Level	
Log Measured From:	Drill Floor	Elev: 4965.0 ft above perm. datum
Depth Reference:	Drillers Tally	Total Depth: 11899 ft
Depth Logged:	6770 ft to 11899 ft	Runs: 4
Date Logged:	14-May-13 to 19-May-13	Spud Date: 12-May-13
		Elevation
		K.B. Top Drive
		G.L. 4949.0 ft
		D.F. 4965.0 ft
		W.D. Onshore

Borehole Record			Casing Record		
Hole Size	From	To	Size	Weight	From To
8.750 in.	968 ft	7670 ft	7.000 in.	26.0 lb/ft	Surface 7670 ft
6.125 in.	7670 ft	11899 ft			

Borehole Deviation Record			Mud Record		
Hole Size	Min. Inc.	Max. Inc.	Type	Weight	From To
8.750 in.	0.10°	84.53°	WBM	8.45 ppg - 10.00 ppg	968 ft 11899 ft
6.125 in.	84.01°	91.85°			

**All interpretations of log data are opinions based on inferences from electrical or other measurements. Weatherford International does not guarantee the accuracy or correctness of any interpretation or recommendation and we shall not be liable or responsible for any loss, cost, damages or expenses incurred or sustained by anyone resulting from any interpretation or recommendation made by any of our employees or agents.**

RUN SUMMARY							
M/LWD Run Number		1	2	3	4		
Bit Size	in.	8.750	8.750	6.125	6.125		
Bit Type		PDC	PDC	PDC	PDC		
Bit TFA	sq.in.	1.245	1.535	1.535	1.535		
Bit Start Depth	ft	968	6810	7670	10684		
Bit End Depth	ft	6810	7670	10684	11899		
Top Log Interval	ft	na	6770	7593	10618		
Bottom Log Interval	ft	na	7670	10684	11899		
Begin Log Time	hrs	na	17:08	13:08	5:22		
Begin Log Date	DD-MMM-YY	na	14-May-13	16-May-13	19-May-13		
End Log Time	hrs	na	4:45	14:35	17:10		
End Log Date	DD-MMM-YY	na	15-May-13	18-May-13	19-May-13		
Drill or Wipe		Drill	Drill	Drill	Drill		
Flow Rate	gal/min	560	540	293	293		
Max AV / CV @ MWD	ft/min	443 / 100	427 / 306	480 / 348	480 / 393		
Min Inc @ Depth	deg @ ft	0.10 @ 6714	0.38 @ 6793	84.01 @ 9376	87.16 @ 11847		
Max Inc @ Depth	deg @ ft	8.69 @ 5604	84.53 @ 7610	90.62 @ 10145	91.85 @ 11594		
MUD DATA							
Depth	ft	6810	7670	10684	11899		
Fluid Type		WBM	WBM	WBM	WBM		
Mud Weight	ppg	8.45	9.70	9.80	10.00		
Plastic Viscosity	cP	1	8	10	15		
Solids / Sand	%	0.70 / 0.10	7.00 / 0.25	7.7 / 0.25	8.2 / 0.50		
NaCl Equiv. Chlorides	ppm	2805	2970	2970	2970		
pH		8.6	9.2	9.7	7.9		
Oil:Water Ratio	% Vol	1.0 : 99.0	8.5 : 91.5	9.5 : 90.5	12.0 : 88.0		
Rm @ Temperature	ohm-m @ deg F	na	na	1.50 @ 70°F	1.50 @ 70°F		
Rmc @ Temperature	ohm-m @ deg F	na	na	1.30 @ 70°F	1.29 @ 70°F		
Rmf @ Temperature	ohm-m @ deg F	na	na	1.31 @ 70°F	1.30 @ 70°F		
KCl	% Vol	0	0	0	0		
Client Representative		R. McPeters	R. McPeters	R. McPeters	R. McPeters		
WeatherfordLWD Engineer		D. Palmer	D. Palmer	T. Daily	T. Daily		

## EQUIPMENT SUMMARY

M/LWD Run Number	1	2	3	4	
BTR / CDS Serial Number	44702 / 44736	44702 / 44736	na	na	
Battery Serial Number	403467909	403467909	na	na	
Gamma Ray Serial Number	na	2978	na	na	
CMS Serial Number	1592	1592	na	na	
Pulser Serial Number	18705	18705	na	na	
HEL Serial Number	na	na	NW131110PDSBI4.75	NW131110PDSBI4.75	
MFR Serial Number	na	na	NW130770RBBK4.75-M1	NW130770RBBK4.75-M1	
SAGR Serial Number	na	na	NW131109JB4.75	NW131109JB4.75	
<b>Sensor to Bit Offsets / Acquisition Rates</b>					
Directional	ft / sec	58.77 / RT	58.77 / RT	50.15 / RT	50.02 / RT
Gamma Ray	ft / sec	na	44.56 / 16	35.54 / 5	35.41 / 5
Resistivity	ft / sec	na	na	78.44 / 5	78.31 / 5
<b>Other Information</b>					
Total BHA Length	ft	115.02	114.90	95.15	100.88
BHA Assembly Type		Steerable	Steerable	Steerable	Steerable
Stabilizer Location	ft	na	na	26.93	27.80
Stabilizer Location	ft	na	na	na	95.12
Run Circulating Time	hr	23.83	12.79	48.11	15.63
Run Drilling Time	hr	15.10	6.60	24.44	5.52

## MUD SUMMARY

Date and Time	Run	Bit Depth	Mud Weight	% K	Rm @ Temp	Rmf @ Temp	Rmc @ Temp	BHCT
14 May 13 @ 13:00	01	6810 ft	8.45 ppg	0	na	na	na	158° F
15 May 13 @ 10:30	02	7670 ft	9.70 ppg	0	na	na	na	163° F
18 May 13 @ 20:45	03	10684 ft	9.80 ppg	0	1.50 ohm-m @ 70°F	1.31 ohm-m @ 70°F	1.30 ohm-m @ 70°F	210° F
20 May 13 @ 10:00	04	11899 ft	10.00 ppg	0	1.50 ohm-m @ 70°F	1.30 ohm-m @ 70°F	1.29 ohm-m @ 70°F	228° F

## M/LWD RUN REMARKS

**Run Number: 2 :: RECORDED DATA LOG**

**WFT Services Provided:**

Recorded and Real Time Logging: Gamma Ray and Temperature.

Directional Services: On demand Inclination and Azimuth.

**Borehole and Environmental Correction:**

Hole Size: 8.750 in.

**Gamma Ray:** Hole size, mudweight, Collar O.D., Collar I.D. and K1 factor.

Mud Weight: 9.70 ppg

**Collar O.D.:** 6.750 in.

K1 Factor: 3.179

**Collar I.D.:** 3.250 in.

**Run Number: 3 :: RECORDED DATA LOG**

**WFT Services Provided:**

Recorded and Real Time Logging: Spectral Azimuthal Gamma Ray, Shallow, Medium and Deep Phase Resistivity, and Temperature.

Directional Services: On demand Inclination and Azimuth.

**Borehole and Environmental Correction:**

Hole Size: 6.125 in.

**Gamma Ray:** Corrected for mud weight, hole size and KCl concentration.

Mud Weight: 9.80 ppg

**Resistivities:** Corrected for borehole temperature, hole size, drilling fluid resistivity and dielectric correction.

Borehole Temperature: 210° F

Drilling Fluid Resistivity: 0.536 ohm-m @ 210° F

KCl Concentration: 0%

**Run Number: 4 :: RECORDED DATA LOG**

**WFT Services Provided:**

Recorded and Real Time Logging: Spectral Azimuthal Gamma Ray, Shallow, Medium and Deep Phase Resistivity, and Temperature.

Directional Services: On demand Inclination and Azimuth.

**Borehole and Environmental Correction:**

Hole Size: 6.125 in.

**Gamma Ray:** Corrected for mud weight, hole size and KCl concentration.

Mud Weight: 10.00 ppg

**Resistivities:** Corrected for borehole temperature, hole size, drilling fluid resistivity and dielectric correction.

Borehole Temperature: 228° F

Drilling Fluid Resistivity: 0.541 ohm-m @ 228° F

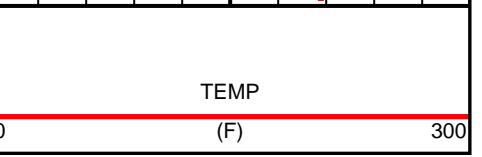
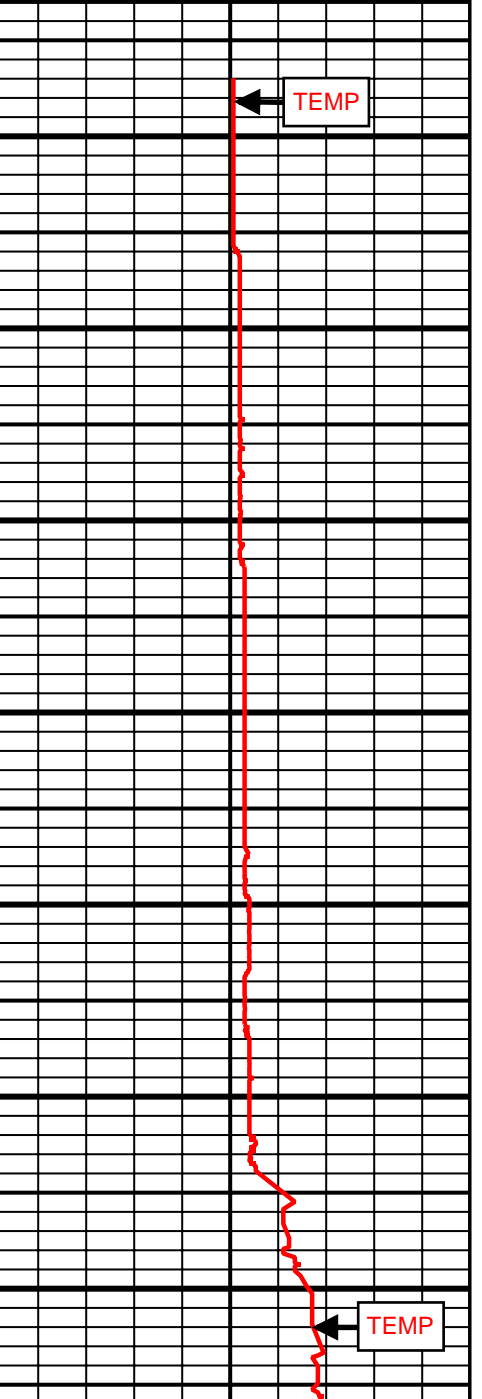
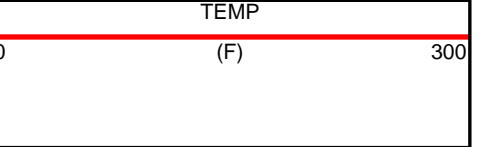
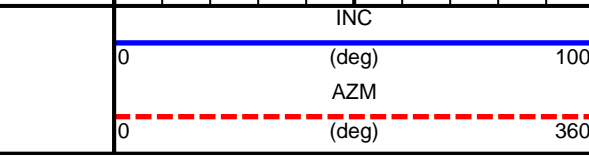
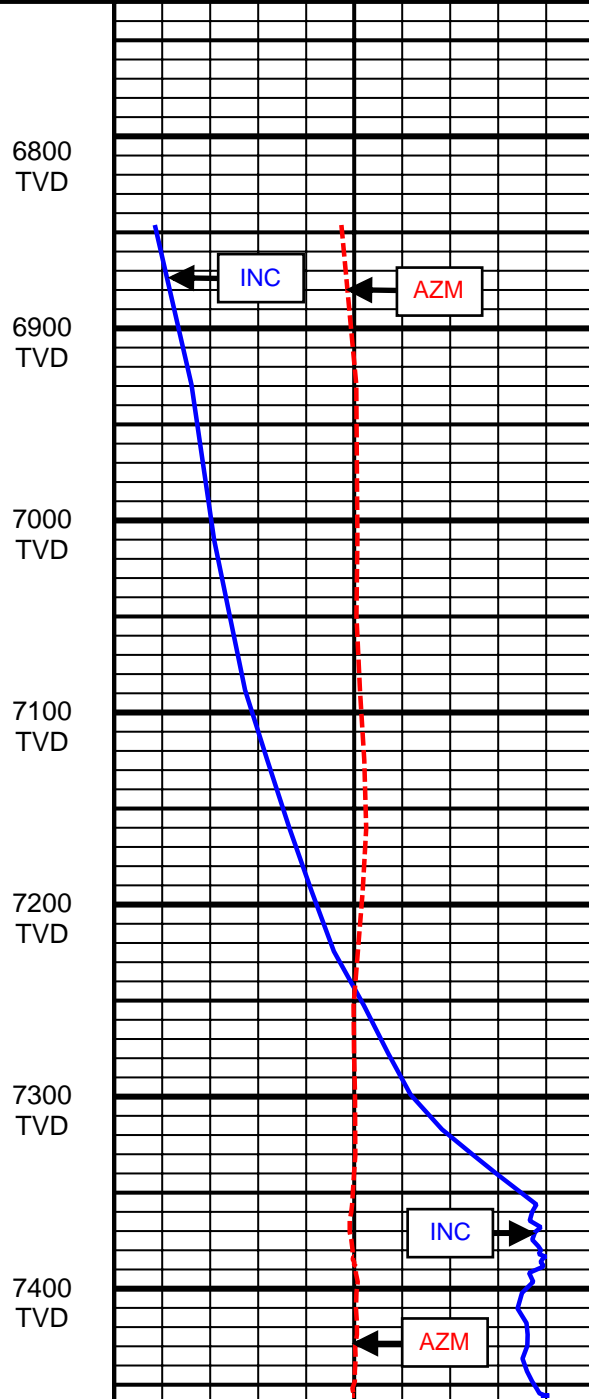
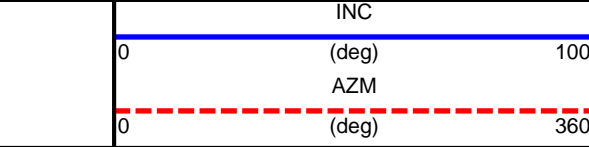
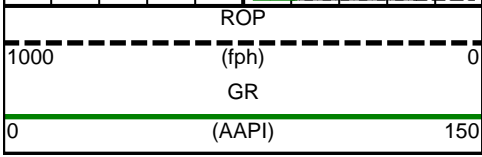
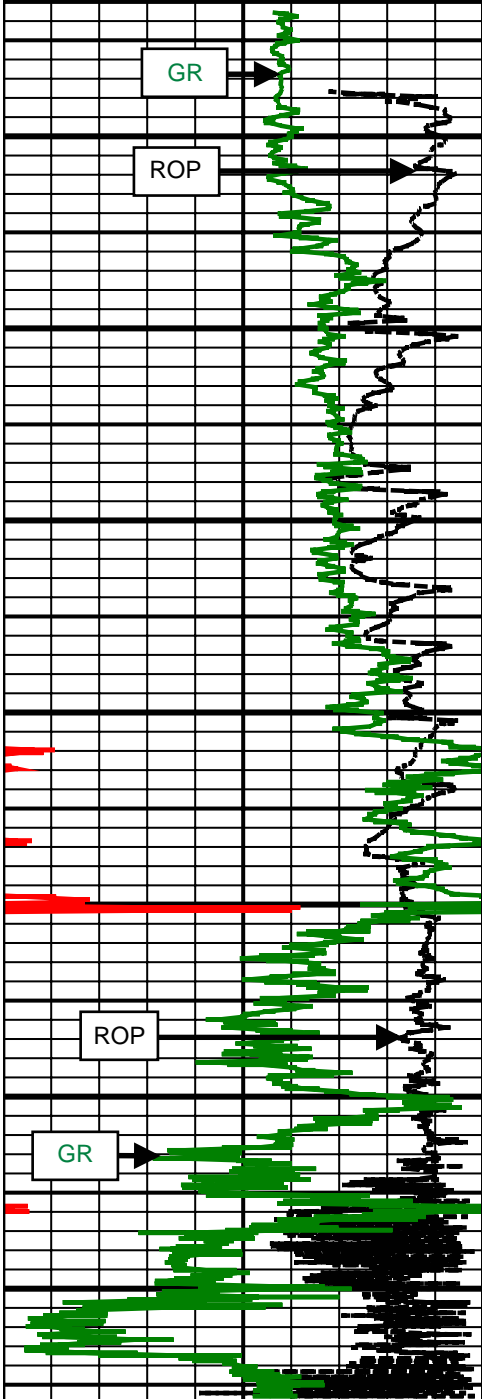
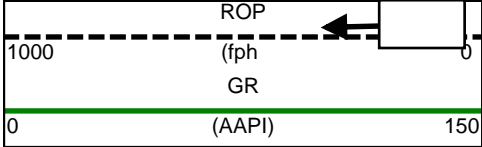
KCl Concentration: 0%

M/LWD LOG COMMENTS	
Comment No. 1-1	<p>MWD Drilling Run 01</p> <p>Start of MWD Drilling Run 01</p> <p>Weatherford International provided 6 3/4 in. Directional services for Run 01. No Logging Performed.</p> <p>Run 01 ended formation drilling May 14, 2013 at 7:51 at 6810 MD / 6777 TVD.</p>
Comment No. 2-1	<p>RECORDED DATA LOG</p> <p>Start of MWD Drilling Run 02</p> <p>Weatherford International provided 6 3/4 in. Directional, Gamma Ray, and Temperature for Run 02.</p> <p>Run 02 started formation drilling May 14, 2013 at 17:08 at 6810 MD / 6777 TVD. Weatherford International logged the 8.750 in. borehole.</p> <p>The WBM at the start of drilling was 9.70 ppg.</p>
Comment No. 2-2	<p>End of MWD Drilling Run 02</p> <p>Run 02 ended drilling formation May 15, 2013 at 4:45 at 7670 MD / 7350 TVD.</p> <p>The WBM at the end of drilling was 9.70 ppg.</p>
Comment No. 3-1	<p>RECORDED DATA LOG</p> <p>Start of LWD Drilling Run 03</p> <p>Weatherford International provided 4 3/4 in. Directional, Resistivity, Azimuthal Gamma Ray, and Temperature for Run 03.</p> <p>There was a problem with one of the transmitters on the Resistivity tool causing erroneous values in the recorded memory of the Attenuated curves.</p> <p>Shallow, Medium, and Deep Phase 2 MHz Resistivity has been plotted to replace the Attenuated curves.</p> <p>Run 03 started formation drilling May 16, 2013 at 13:08 at 7670 MD / 7350 TVD. Weatherford International logged the 6.125 in. borehole.</p> <p>The WBM at the start of drilling was 9.80 ppg.</p>
Comment No. 3-2	<p>End of LWD Drilling Run 03</p> <p>Run 03 ended drilling formation May 18, 2013 at 14:35 at 10684 MD / 7455 TVD.</p> <p>The WBM at the end of drilling was 9.80 ppg.</p>
Comment No. 4-1	<p>RECORDED DATA LOG</p> <p>Start of LWD Drilling Run 04</p> <p>Weatherford International provided 4 3/4 in. Directional, Resistivity, Azimuthal Gamma Ray, and Temperature for Run 04.</p> <p>Run 04 started formation drilling May 19, 2013 at 5:22 at 10684 MD / 7455 TVD. Weatherford International logged the 6.125 in. borehole.</p> <p>The WBM at the start of drilling was 9.80 ppg.</p>
Comment No. 4-2	<p>End of LWD Drilling Run 04</p> <p>Run 04 ended drilling formation May 19, 2013 at 17:10 at 11899 MD / 7451 TVD.</p> <p>The WBM at the end of drilling was 10.00 ppg.</p>

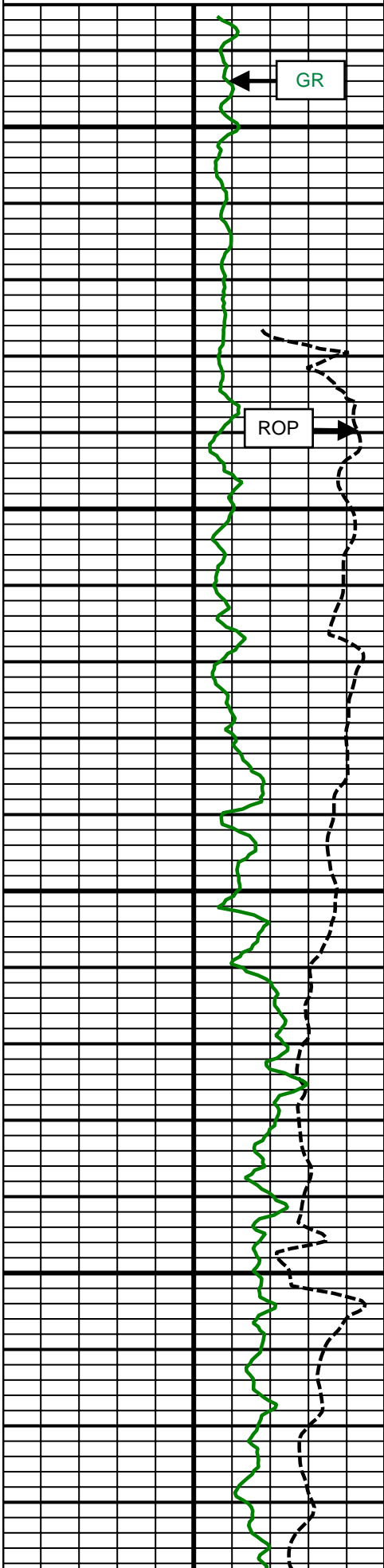
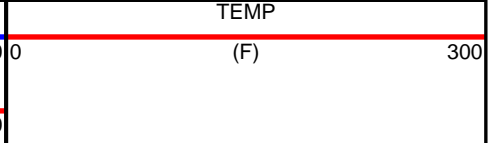
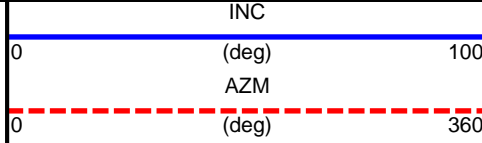
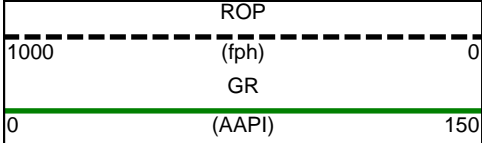
CURVE SPECIFICATIONS				
CURVE TYPE	MNEMONIC	UNITS	COMMENTS	CORRECTIONS
Rate of Penetration	ROP	fph	Rate of Penetration 3.0 ft window 0.5 ft Exponential Smoothing	None
Gamma Ray	GR	AAPI	Gamma Ray 3.0 ft window 0.5 ft Exponential Smoothing	See M/LWD Run Remarks
Inclination	INC	deg	Survey Inclination No Smoothing	
Azimuth	AZM	deg	Survey Azimuth No Smoothing	
Temperature	TEMP	Degree Fahrenheit	Borehole Temperature 3.0 ft window 0.5 ft Exponential Smoothing	



**1 Inch - True Vertical Depth**

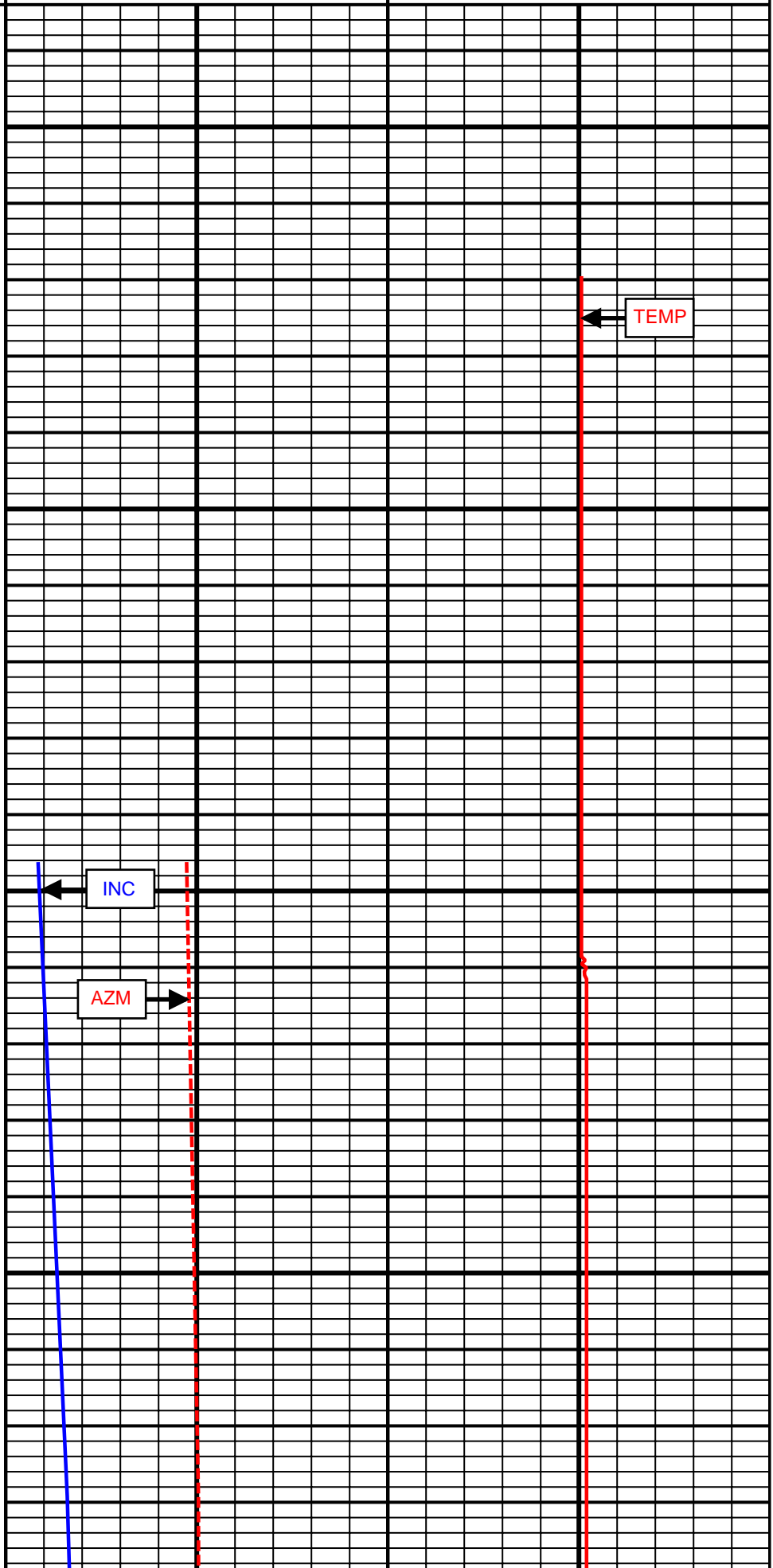


**5 Inch - True Vertical Depth**



6800  
TVD

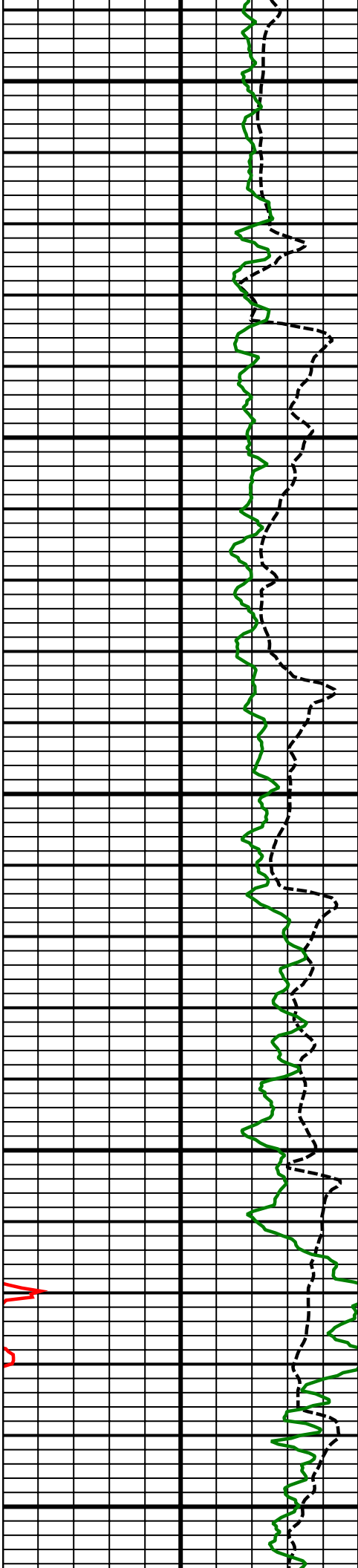
6900  
TVD



INC

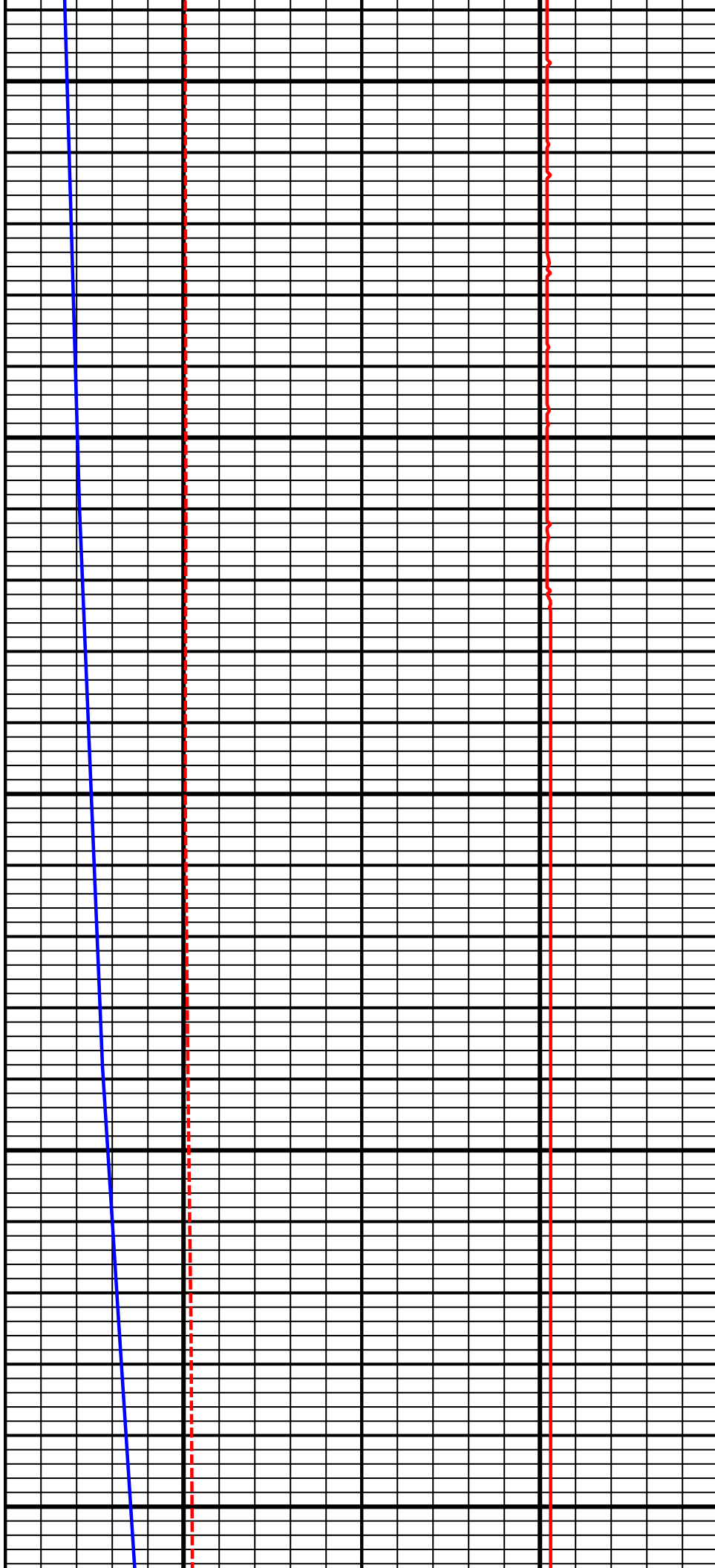
AZM

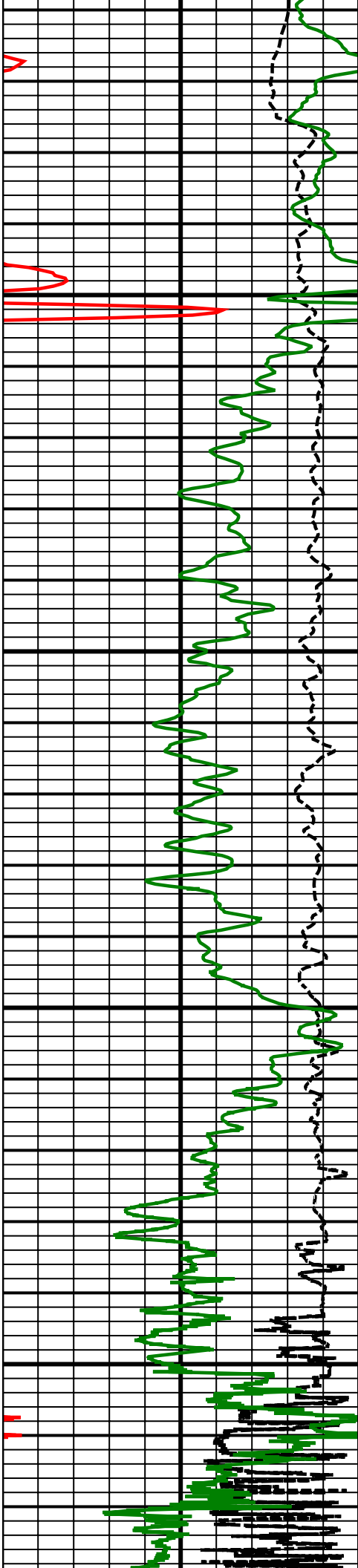
TEMP



7000  
TVD

7100  
TVD

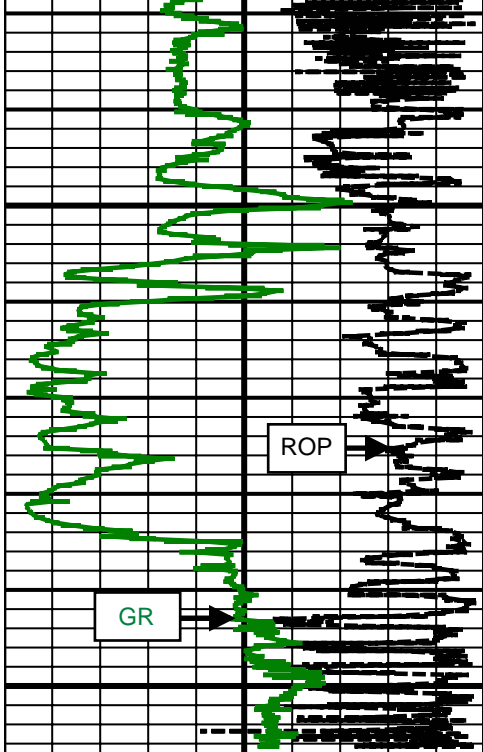




7200  
TVD

7300  
TVD

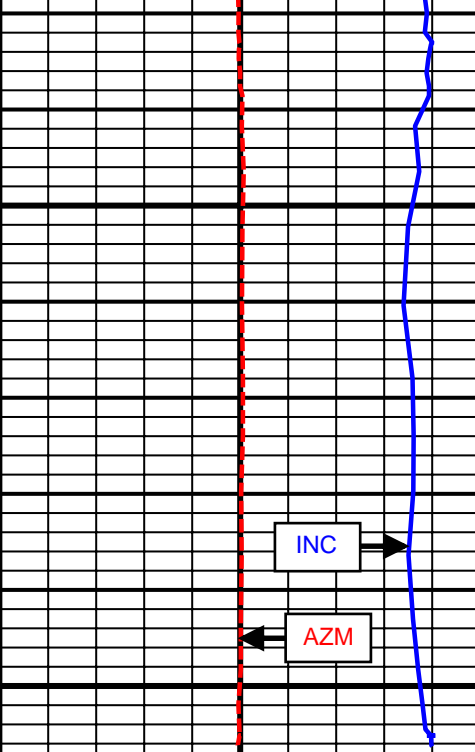
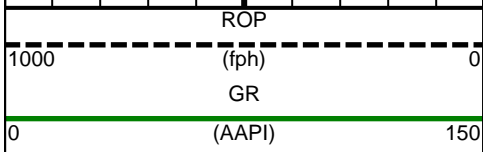




7400  
TVD

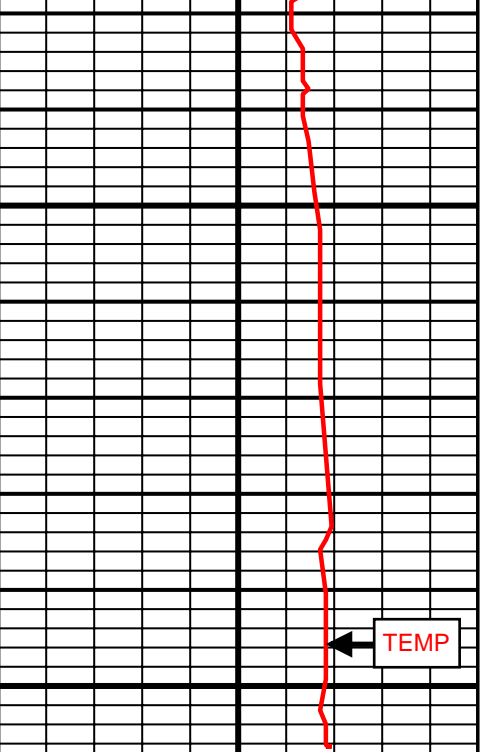
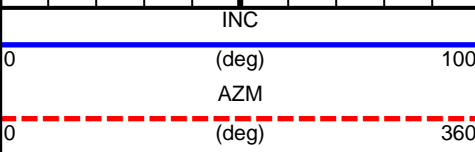
ROP

GR

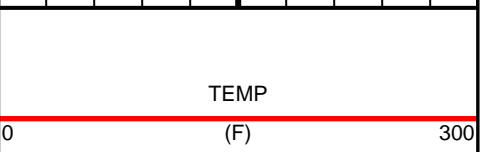


INC

AZM



TEMP



SURVEY						
Survey Calculation Method: <b>Minimum Curvature</b>						
Magnetic Reference	Target Direction	Total Magnetic Field	Magnetic Dip Angle	Magnetic Declination	Grid Convergence	Total Correction
<b>True North</b>	<b>179.52 deg</b>	<b>52739 nT</b>	<b>66.78 deg</b>	<b>8.62 deg</b>	<b>0.00 deg</b>	<b>8.62 deg</b>
<b>Survey Tie-On</b>	Depth	INC	AZ	TVD	NS	EW
	<b>906.00 ft</b>	<b>0.10 deg</b>	<b>24.76 deg</b>	<b>905.98 ft</b>	<b>3.47 ft</b>	<b>-4.11 ft</b>

Well Head							
Depth (ft)	Inc (deg)	Azm (deg)	TVD (ft)	NS (ft)	EW (ft)	VSect (ft)	Dogleg (deg/100ft)
1051.00	0.36	307.16	1050.98	3.86	-4.42	-3.90	0.24
1142.00	2.18	331.18	1141.95	5.55	-5.48	-5.60	2.04
1233.00	4.60	310.70	1232.79	9.45	-9.08	-9.52	2.93
1324.00	6.18	312.10	1323.38	15.11	-15.48	-15.24	1.74
1413.00	7.13	294.55	1411.79	20.62	-24.06	-20.82	2.51
1523.00	6.96	292.78	1520.96	26.03	-36.42	-26.34	0.25
1616.00	6.44	300.81	1613.33	30.89	-46.09	-31.27	1.15
1709.00	6.77	303.19	1705.71	36.56	-55.16	-37.02	0.46
1802.00	6.67	300.45	1798.07	42.30	-64.40	-42.84	0.36
1895.00	6.56	311.24	1890.46	48.54	-73.06	-49.15	1.34
1988.00	6.30	309.60	1982.87	55.29	-80.98	-55.97	0.34
2082.00	5.88	307.34	2076.34	61.50	-88.78	-62.24	0.51
2175.00	5.75	309.71	2168.86	67.37	-96.15	-68.17	0.29
2268.00	5.28	309.04	2261.43	73.04	-103.06	-73.90	0.51
2362.00	6.36	313.77	2354.95	79.36	-110.18	-80.28	1.26
2456.00	6.45	312.95	2448.36	86.56	-117.81	-87.55	0.14
2550.00	6.55	303.97	2541.76	93.16	-126.12	-94.21	1.09
2643.00	6.17	305.80	2634.19	99.04	-134.57	-100.17	0.46
2737.00	6.41	300.09	2727.62	104.63	-143.21	-105.82	0.71
2830.00	7.91	302.44	2819.89	110.66	-153.10	-111.94	1.64
2924.00	7.68	303.65	2913.03	117.61	-163.79	-118.98	0.30
3017.00	7.50	301.87	3005.21	124.26	-174.11	-125.72	0.32
3111.00	7.23	302.52	3098.44	130.68	-184.31	-132.22	0.30
3204.00	7.03	303.18	3190.72	136.94	-194.01	-138.56	0.23
3298.00	6.32	301.72	3284.08	142.81	-203.23	-144.51	0.78
3383.00	5.84	303.32	3368.60	147.65	-210.82	-149.41	0.60
3468.00	6.65	307.01	3453.10	152.98	-218.36	-154.81	1.06
3553.00	6.12	308.21	3537.57	158.75	-225.85	-160.64	0.64
3639.00	5.49	308.91	3623.13	164.17	-232.66	-166.11	0.74
3724.00	5.43	309.65	3707.74	169.29	-238.92	-171.28	0.11
3810.00	4.83	309.88	3793.40	174.21	-244.83	-176.25	0.70
3895.00	5.29	309.39	3878.06	178.99	-250.60	-181.08	0.54
3981.00	5.98	306.08	3963.65	184.14	-257.29	-186.29	0.89
4066.00	6.27	303.87	4048.16	189.34	-264.72	-191.55	0.44
4152.00	6.87	305.29	4133.60	194.92	-272.82	-197.20	0.72
4237.00	6.78	304.69	4218.00	200.72	-281.09	-203.07	0.14
4323.00	6.45	305.33	4303.42	206.40	-289.21	-208.82	0.39
4408.00	6.15	304.64	4387.91	211.75	-296.85	-214.23	0.36
4493.00	5.84	305.94	4472.44	216.88	-304.10	-219.42	0.40
4579.00	6.69	304.45	4557.93	222.28	-311.77	-224.88	1.01
4664.00	6.45	304.30	4642.37	227.77	-319.80	-230.44	0.28
4750.00	6.08	304.70	4727.86	233.08	-327.53	-235.82	0.43



4835.00	6.20	305.26	4812.37	238.30	-334.98	-241.09	0.16
4921.00	5.76	303.22	4897.90	243.34	-342.38	-246.20	0.57
5006.00	5.93	301.75	4982.46	247.99	-349.68	-250.91	0.27
5091.00	6.49	303.63	5066.96	252.96	-357.42	-255.94	0.70
5176.00	6.71	306.82	5151.40	258.60	-365.39	-261.65	0.50
5262.00	6.30	307.23	5236.84	264.46	-373.17	-267.58	0.48
5347.00	6.42	304.67	5321.32	269.99	-380.79	-273.17	0.36
5433.00	6.57	311.97	5406.77	276.01	-388.41	-279.26	0.98
5604.00	8.69	306.00	5576.25	290.15	-406.13	-293.54	1.32
5689.00	8.28	305.06	5660.32	297.44	-416.34	-300.92	0.51
5774.00	6.94	306.03	5744.57	303.98	-425.50	-307.53	1.58
5860.00	7.16	300.40	5829.92	309.74	-434.32	-313.37	0.84
5945.00	7.02	304.41	5914.27	315.36	-443.18	-319.06	0.60
6030.00	6.22	305.54	5998.70	320.97	-451.21	-324.74	0.95
6116.00	5.23	305.14	6084.27	325.94	-458.21	-329.76	1.15
6201.00	4.23	301.82	6168.98	329.82	-464.04	-333.69	1.22
6287.00	3.28	300.26	6254.80	332.73	-468.86	-336.65	1.11
6372.00	2.67	300.39	6339.68	334.96	-472.67	-338.91	0.72
6458.00	2.03	297.98	6425.61	336.69	-475.74	-340.66	0.75
6543.00	1.78	295.14	6510.56	337.95	-478.27	-341.95	0.31
6629.00	0.49	292.49	6596.54	338.66	-479.81	-342.67	1.50
6714.00	0.10	289.22	6681.54	338.82	-480.22	-342.84	0.46
6750.00	0.10	139.85	6717.54	338.81	-480.23	-342.82	0.54
6793.00	0.38	107.97	6760.54	338.74	-480.07	-342.75	0.70
6879.00	8.44	170.34	6846.22	332.42	-478.74	-336.42	9.62
6964.00	16.10	181.54	6929.23	314.46	-478.01	-318.45	9.40
7049.00	20.80	182.37	7009.84	287.58	-478.95	-291.58	5.54
7092.00	24.06	181.57	7049.58	271.19	-479.50	-275.19	7.61
7135.00	27.25	184.21	7088.34	252.60	-480.47	-256.62	7.88
7177.00	31.87	187.53	7124.86	232.01	-482.63	-236.04	11.67
7220.00	36.52	188.95	7160.42	208.10	-486.11	-212.17	10.97
7262.00	41.13	186.32	7193.14	182.01	-489.57	-186.11	11.66
7305.00	45.74	182.73	7224.36	152.55	-491.87	-156.67	12.16
7348.00	52.01	179.51	7252.63	120.19	-492.45	-124.31	15.63
7391.00	57.09	179.77	7277.56	85.18	-492.24	-89.30	11.82
7433.00	61.71	180.60	7298.93	49.04	-492.36	-53.16	11.13
7476.00	68.29	180.67	7317.10	10.09	-492.79	-14.22	15.30
7518.00	74.77	180.76	7330.40	-29.72	-493.29	25.59	15.43
7561.00	79.51	179.81	7339.96	-71.63	-493.50	67.50	11.23
7610.00	84.53	177.98	7346.76	-120.13	-492.56	116.00	10.89
7754.00	87.96	178.41	7356.19	-263.73	-488.03	259.63	2.40
7840.00	87.10	177.82	7359.90	-349.60	-485.20	345.52	1.21
7925.00	86.55	176.63	7364.61	-434.37	-481.10	430.32	1.54
8011.00	88.89	176.62	7368.03	-520.15	-476.04	516.14	2.72
8096.00	87.65	176.58	7370.60	-604.96	-471.00	600.99	1.46
8182.00	87.10	177.81	7374.53	-690.76	-466.79	686.83	1.57
8267.00	88.34	178.40	7377.92	-775.65	-463.99	771.73	1.62
8352.00	88.89	178.79	7379.97	-860.60	-461.90	856.70	0.79
8438.00	88.46	178.67	7381.96	-946.55	-460.00	942.66	0.52
8523.00	90.06	179.37	7383.06	-1031.53	-458.54	1027.65	2.05
8608.00	89.75	179.81	7383.20	-1116.53	-457.94	1112.65	0.63
8694.00	89.51	179.00	7383.75	-1202.52	-457.04	1198.65	0.98
8779.00	89.20	178.82	7384.71	-1287.50	-455.43	1283.64	0.42
8865.00	88.83	179.93	7386.19	-1373.48	-454.49	1369.62	1.36
8950.00	89.32	179.86	7387.56	-1458.47	-454.33	1454.61	0.58
9035.00	89.32	181.62	7388.57	-1543.45	-455.43	1539.58	2.07
9120.00	86.42	181.20	7391.73	-1628.36	-457.52	1624.47	3.45
9206.00	87.29	182.62	7396.45	-1714.18	-460.38	1710.26	1.93
9291.00	84.94	181.66	7402.21	-1798.91	-463.55	1794.97	2.99
9376.00	84.01	181.32	7410.39	-1883.49	-465.75	1879.52	1.16
9462.00	85.87	182.00	7417.97	-1969.11	-468.23	1965.12	2.30

9547.00	86.11	182.01	7423.92	-2053.85	-471.20	2049.84	0.28
9632.00	86.05	180.68	7429.73	-2138.63	-473.19	2134.59	1.56
9718.00	85.06	181.04	7436.39	-2224.36	-474.48	2220.31	1.22
9803.00	85.99	180.42	7443.03	-2309.09	-475.56	2305.03	1.31
9889.00	87.04	180.47	7448.25	-2394.93	-476.22	2390.86	1.22
9974.00	87.97	178.59	7451.95	-2479.84	-475.52	2475.77	2.47
10059.00	88.58	179.38	7454.51	-2564.79	-474.02	2560.73	1.17
10145.00	90.62	180.33	7455.11	-2650.78	-473.80	2646.72	2.62
10230.00	90.18	179.75	7454.52	-2735.78	-473.86	2731.71	0.86
10316.00	88.89	178.56	7455.22	-2821.76	-472.59	2817.71	2.04
10401.00	89.82	178.13	7456.17	-2906.72	-470.14	2902.68	1.21
10486.00	90.00	178.24	7456.31	-2991.68	-467.45	2987.66	0.25
10572.00	90.18	178.90	7456.17	-3077.65	-465.30	3073.65	0.80
10656.00	90.18	179.81	7455.91	-3161.64	-464.36	3157.64	1.08
10741.00	91.79	180.14	7454.45	-3246.63	-464.32	3242.63	1.93
10826.00	91.36	180.03	7452.11	-3331.60	-464.44	3327.59	0.52
10912.00	90.55	179.96	7450.68	-3417.58	-464.44	3413.57	0.95
10997.00	90.49	179.02	7449.91	-3502.58	-463.68	3498.57	1.11
11083.00	89.51	177.77	7449.91	-3588.54	-461.27	3584.55	1.85
11168.00	89.38	178.19	7450.73	-3673.48	-458.28	3669.51	0.52
11253.00	89.38	177.92	7451.65	-3758.43	-455.39	3754.48	0.32
11339.00	89.38	178.36	7452.58	-3844.38	-452.60	3840.45	0.51
11424.00	89.14	177.27	7453.68	-3929.31	-449.36	3925.41	1.31
11509.00	90.74	177.45	7453.77	-4014.21	-445.44	4010.34	1.89
11594.00	91.85	177.89	7451.85	-4099.12	-441.99	4095.27	1.40
11679.00	91.35	177.95	7449.47	-4184.03	-438.91	4180.21	0.59
11765.00	91.06	177.69	7447.66	-4269.95	-435.63	4266.15	0.45
11847.00	87.16	172.82	7448.94	-4351.62	-428.86	4347.87	7.61
11899.00	87.16	172.82	7451.52	-4403.15	-422.37	4399.46	0.00

---

\*\*Weatherford surveys from 1051 ft MD to 11847 ft MD.\*\*

\*\*TD at 11899 ft MD.\*\*

The total correction is 8.62 deg relative to True North.

---



**Weatherford®**

Final Print

COMPANY	<u>Anadarko Petroleum</u>		
WELL	<u>Cannon 13C-10HZ</u>		
FIELD	<u>Wattenberg</u>		
RIG	<u>Xtreme 23</u>		
LOC.	<u>Colorado</u>	COUNTY	<u>Weld</u>