

**BAKER
HUGHES**

**RESERVOIR
PERFORMANCE
MONITOR**

Baker Atlas

File No: CH073168	Company Well Field County	WPX ENERGY GOLDSBOROUGH PA 522-11 PARACHUTE GARFIELD	State COLORADO
API No: 05045218240000	Location SHL: 2413' FNL, 2067' FWL 11 7S 9SW CYCLONE 17 BHL: 2356' FNL, 2109' FWL SEC 11 TWP 7S RGE 9SW		Other Services BOND LOG
Permanent Datum Log Measured From Drill Measured From	GL KB KELLY BUSHING	Elevation 22 ft Above P. D.	Elevations KB 6296 ft DF GL 6274 ft

Date	14/JUN/13	
Run	ONE	
Service Order	624426	
Depth Driller	7664 ft	
Depth Logger	7648 ft	
Bottom Logged Interval	7638 ft	
Top Logged Interval	4175 ft	
Time Started	1430	
Time Finished	2000	
Operator Rig Time	5.5 HRS	
Type of Fluid in Hole	WATER	
Fluid Density	NA	
Salinity	NA	
Fluid Level	69 ft	
Logged Cement Top	NA	
Wellhead Pressure	0 psi	
Maximum Hole Deviation	NA	
Nominal Logging Speed	10 fpm	
Maximum Recorded Temperature	221 degF	
Reference Log	BAKER HUGHES BOND LOG	
Reference Log Date	13/JUN/13	
Equipment No.	4271	GRAND JCT
Recorded By	FLOYD RENEAU	
Witnessed By	DUSTIN WELSH	

- FOLD HERE

In making interpretations of logs, our employees will give the customer the benefit of their best judgement. But since all interpretations are opinions based on inferences from electrical or other measurements, we cannot, and we do not guarantee the accuracy or correctness of any interpretation. We shall not be liable or responsible for any loss, cost, damages, or expenses whatsoever incurred or sustained by the customer resulting from any interpretation made by any of our employees.

Borehole Record		
Bit Size	From	To
13.5 in	0 ft	880 ft
8.75 in	880 ft	7664 ft

Casing Record				
Size	Weight	Grade	From	To
9.625 in	32 lbm/ft		0 ft	880 ft
4.5 in	11.6 lbm/ft	I-80	0 ft	7664 ft

Remarks

All data on this log is shifted and depth matched using the Gamma Ray curve to the Baker Hughes bond log dated 6/13/2013 at the client's request.

The amount of linear shift is -5.5 feet.

Logged in PNC-3D mode.

BHT = 221°F

SJ = 4412'-4436'

Equipment Data					
Run	Trip	Tool	Series Number	Serial Number	Position
1	1	RPM	8281FA	10307727	FREE
1	1	RPM	8281PA	10585555	FREE
1	1	RPM	8281EA	10303640	FREE
1	1	GR	8262XA	10076055	FREE
1	1	TEL/CCL	8248ED	10387150	FREE
1	1	PCM	8250EA	Z166326	FREE

MAIN SECTION
PNC 3-D MODE

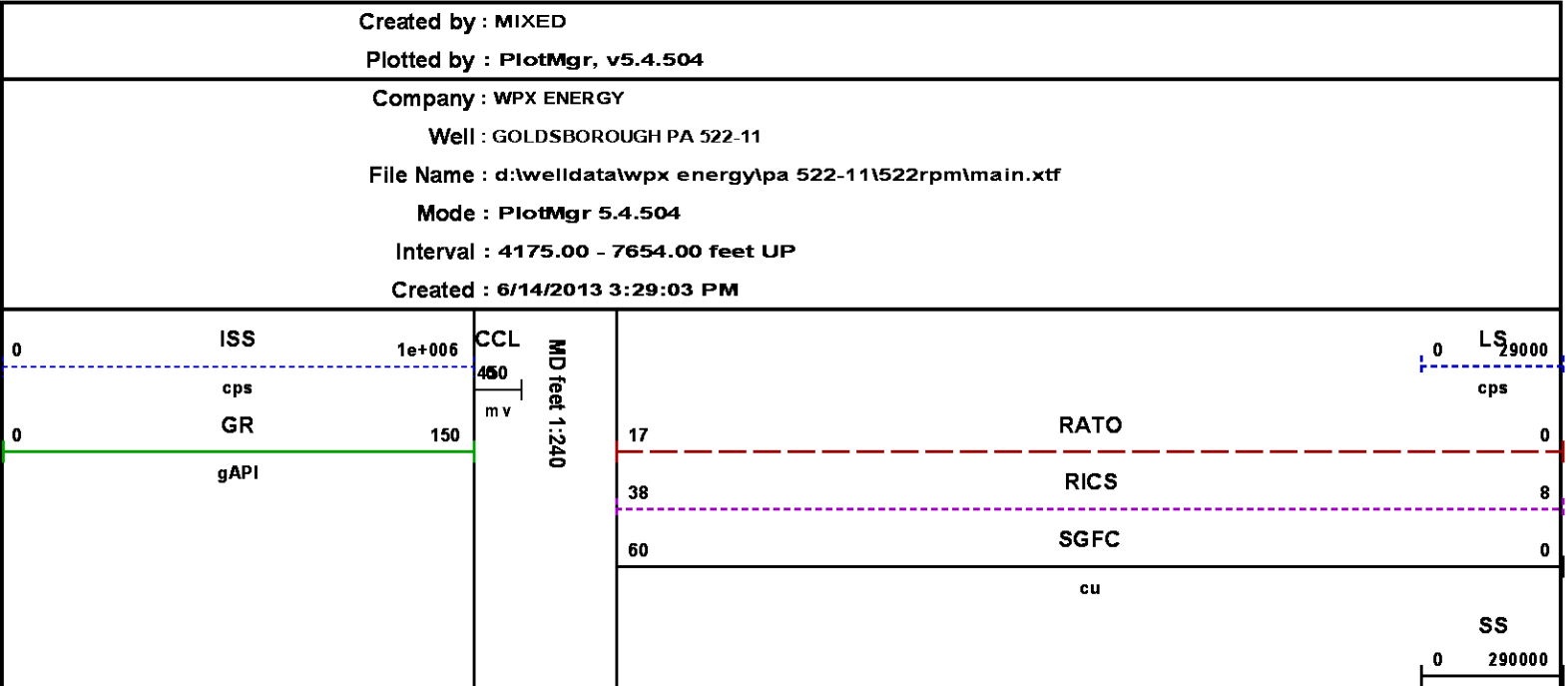
SPL PROCESSING

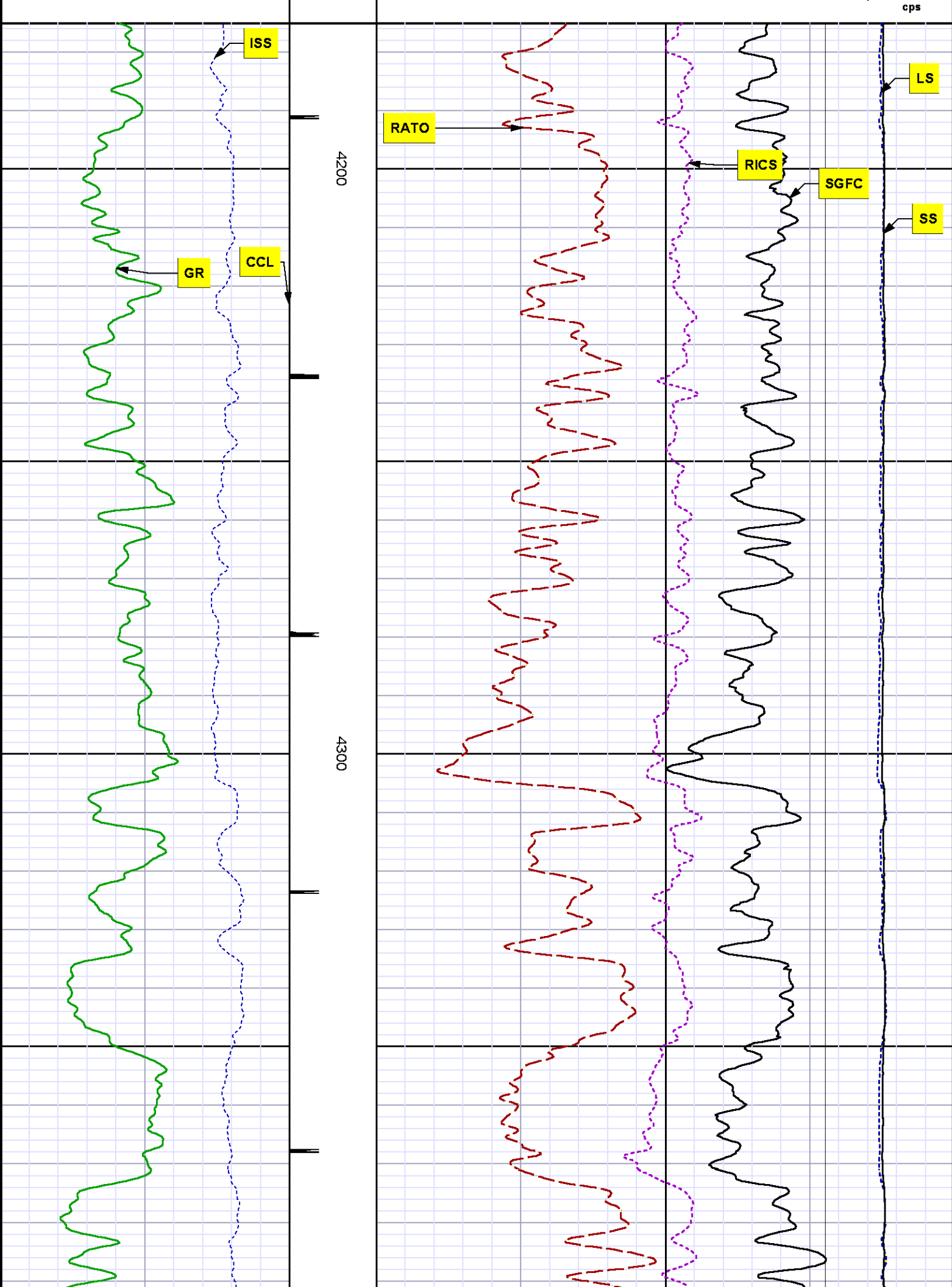
MEASUREMENT TYPE	PARAMETER	VALUE	UNITS	TOP	BOTTOM
PNC Porosity	Borehole	Cased		4126.270	7657.238
PNC Porosity	Borehole Size	8.750	inch	4126.270	7657.238
PNC Porosity	Casing Size	4.500	inch	4126.270	7657.238
PNC Porosity	Gas Filled	Non Gas Filled		4126.270	7657.238
PNC Porosity	Matrix	Sandstone		4126.270	7657.238

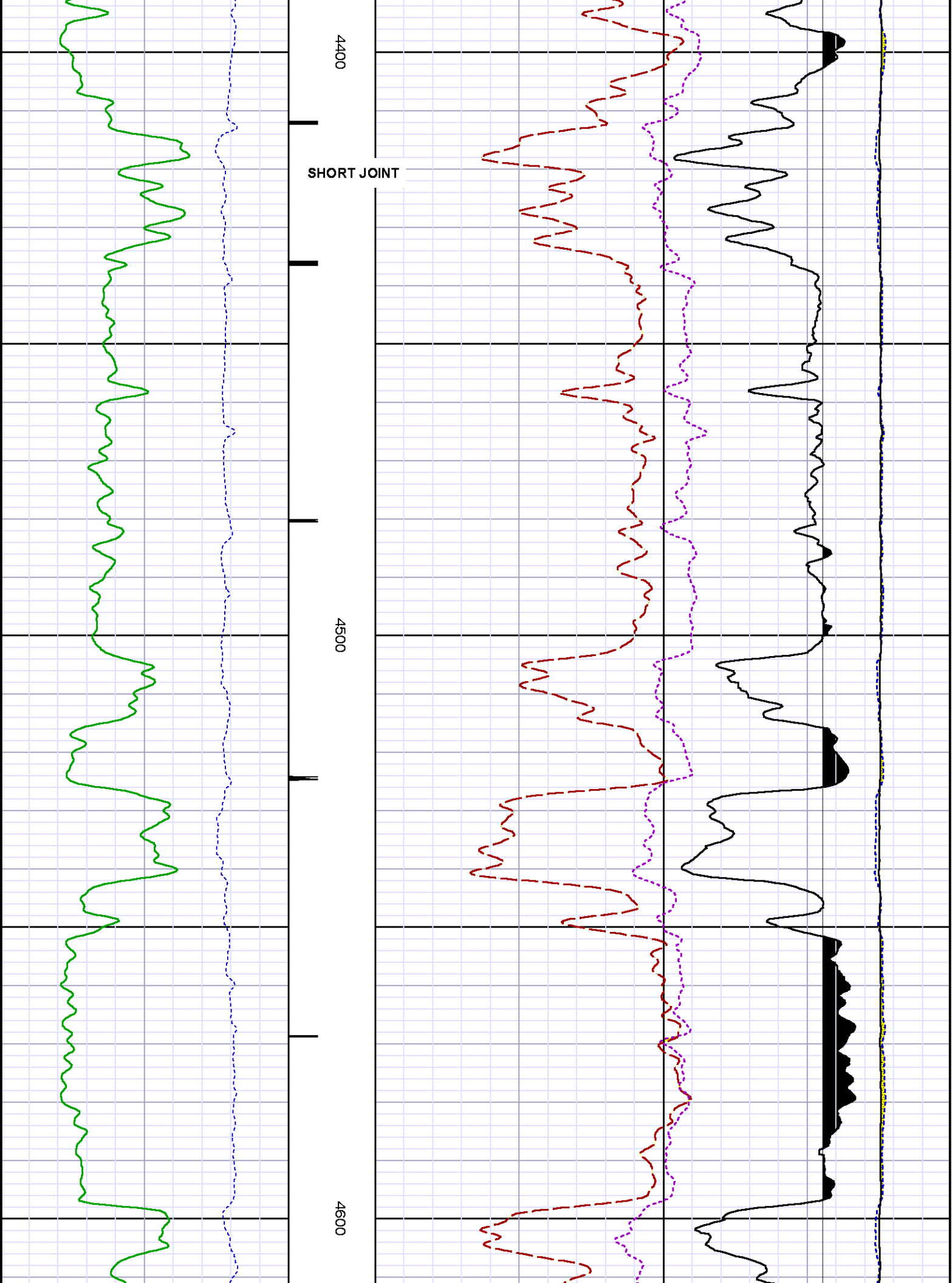
DEPTH OFFSETS
(for Acquired Curves)

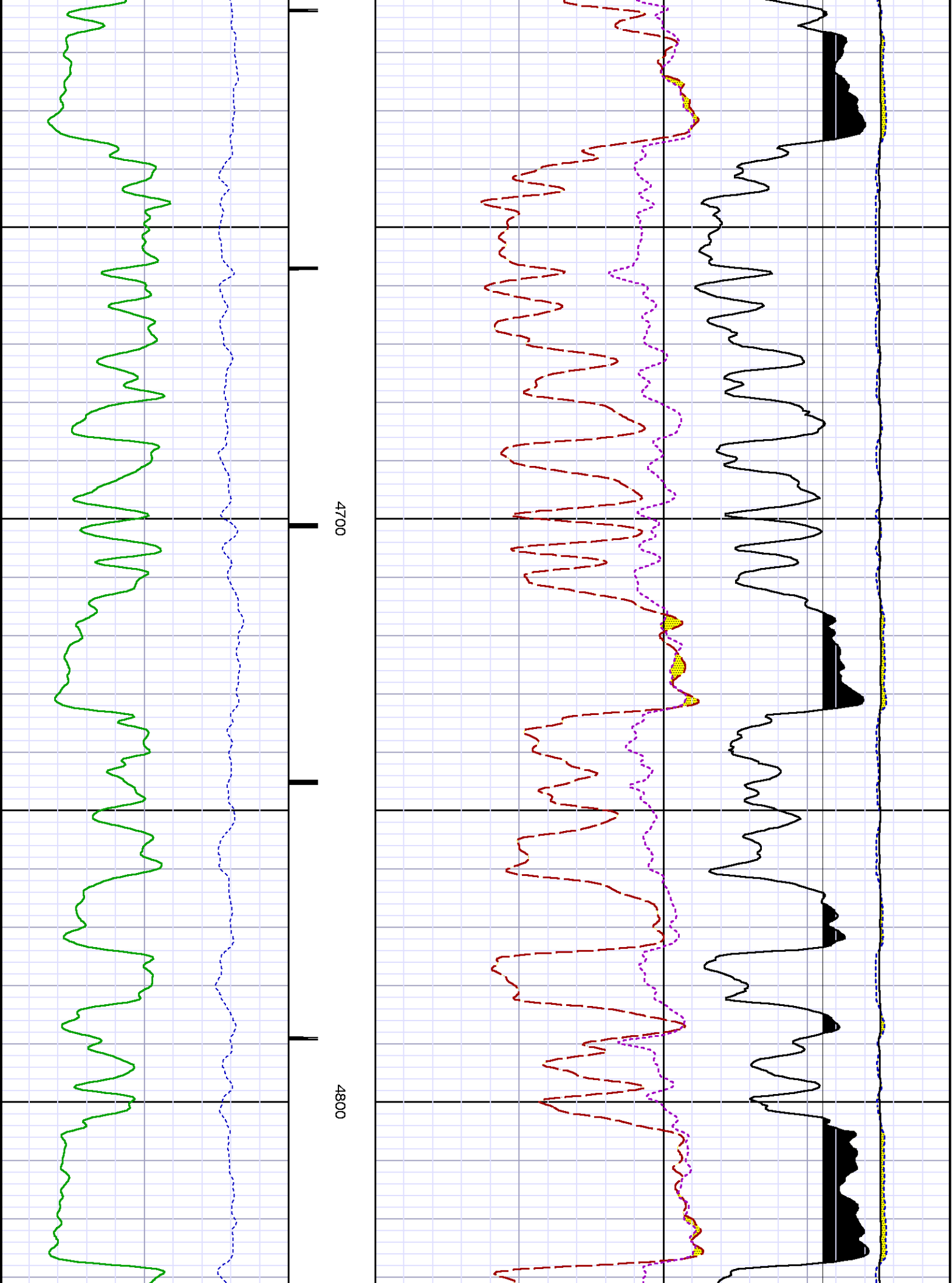
SERIES	DEPTH OFFSET	ACQUIRED CURVES
8248ED	-15.320	FLTM
8248ED	-13.320	CCL CHV
8262XA	-10.189	GR
8281XA	-0.662	HVC3Q0 SEQ3 AMA3 AML3 BKX CXS CPT3Q0 CPT3Q2 CPT3Q3 CPT3Q4 ET3 IXS MCS3 MCS3Q0 QCAL3 RGN3 RICX SDA3 SDL3 SGA3 SGL3 STA3 XS ASPEC3 AMB3 AMF3 CHF3 IXSC IXSN RATO23 FV3V0 FVW300 FVW301 FVW302 FVW303 FVW304

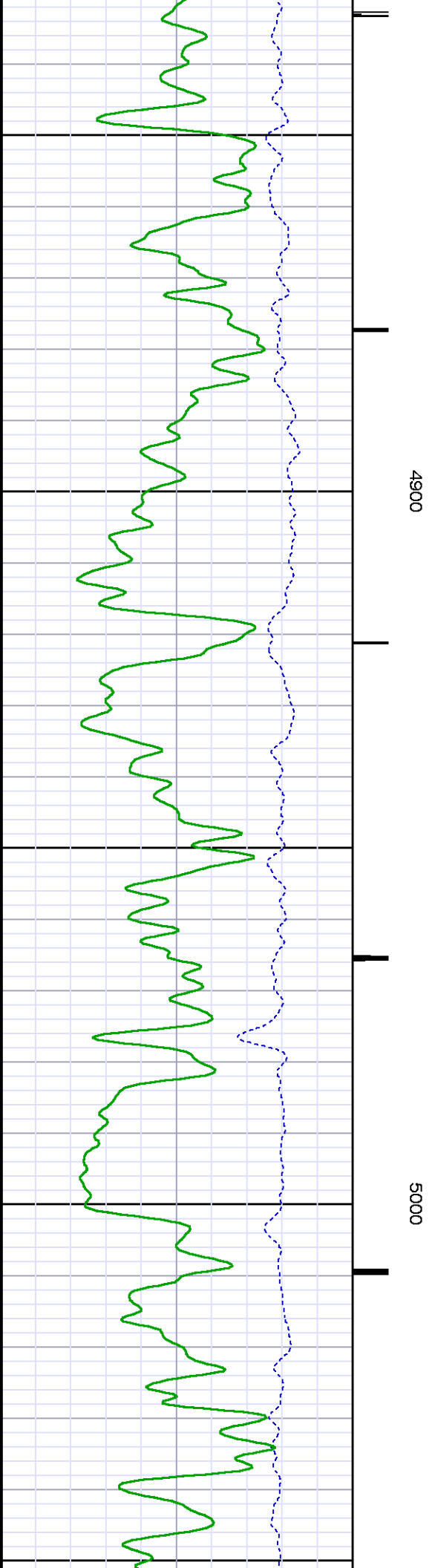
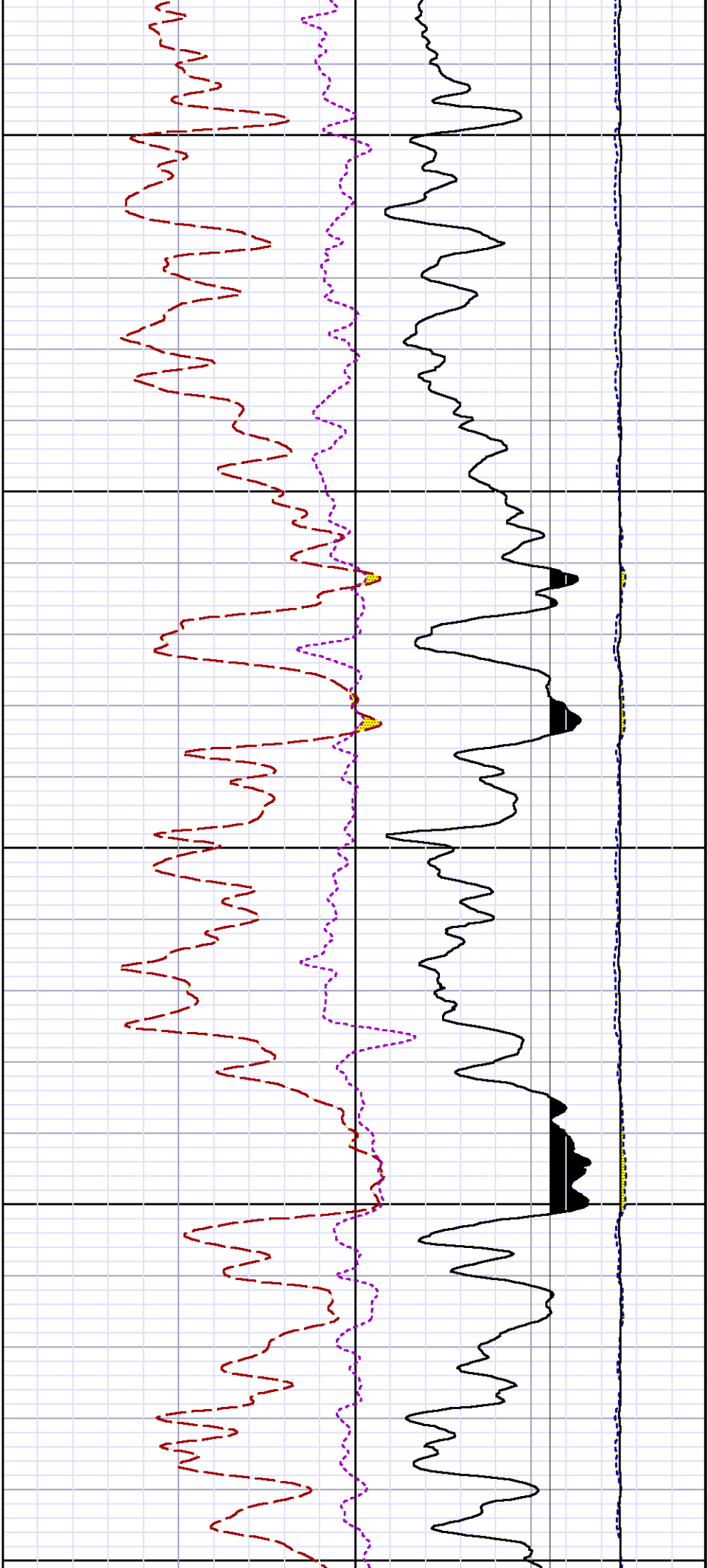
		RICXC	RIN13C	RIN23	RIN23C	SD3D	SG3D
		SGB3	SGF3	WDTH3	CXSR	IXSR	XSR
		RICXR					
8281XA	-0.250	HVC2Q0	SEQ2	AMA2	AMB2	AMF2	AML2
		BKL	CHF2	CLS	CPT2Q0	CPT2Q2	CPT2Q3
		CPT2Q4	ET2	ILS	LS	MCS2	MCS2Q0
		QCAL2	RGN2	RICL	RONE23	RTWO23	SDA2
		SDL2	SGA2	SGB2	SGF2	SGK2	SGL2
		STA2	ASPEC2	ILSC	ILSN	WDTH2	RICLC
		CLSR	ILSR	LSR	RICLR		
8281XA	0.000	CPRS	HVC1Q0	MV	SEQ	SEQ1	AMA1
		AMB1	AME1	AMF1	AML1	BKS	CHF1
		CSS	CORB	CORF	CPT1Q0	CPT1Q2	CPT1Q2A
		CPT1Q2B	CPT1Q2C	CPT1Q3	CPT1Q4	CPT1Q5	ET1
		G1	G2	GE1S	GE2S	ISS	MCS1
		MCS1Q0	QA1	QCAL1	QM1	RATO	RATO13
		RBOR	RGN1	RICS	RIN	RONE	RPOR
		RTWO	RIN13	RONE13	RTWO13	SALB	SC1
		SDA1	SDL1	SGA1	SGB1	SGBC	SGE1
		SGF1	SGFC	SGK1	SGL1	SS	SS2
		STA1	PD1S	PD2S	PD3S	MD1S	MD2S
		MD3S	DG1S	DG2S	DG3S	PD1M	PD2M
		PD3M	MD1M	MD2M	MD3M	DG1M	DG2M
		DG3M	MVS	MA	MVM	FILV	IAM
		TA	PVM	PVS	IAS	SSTAT	QPD1
		QPD2	QPD3	QMD1	QMD2	QMD3	QDG1
		QDG2	QDG3	QMA	QTA	QFILV	QMV
		QPV	QIA	DERR	DCNT	QPK1	QSA1
		PKS1	ASPEC1	H0C	FE2XC	ISSC	RINC
		ISSN	RDEN	WDTH1	RICSC	CSSR	G1R
		G2R	ISSR	SSR	SS2R	RATOR	RATO13R
		RBORR	RICSR	RINR	RIN13R	RONER	RPORR
		RTWOR					
SYSTEM	0.000	TEN	TTEN				

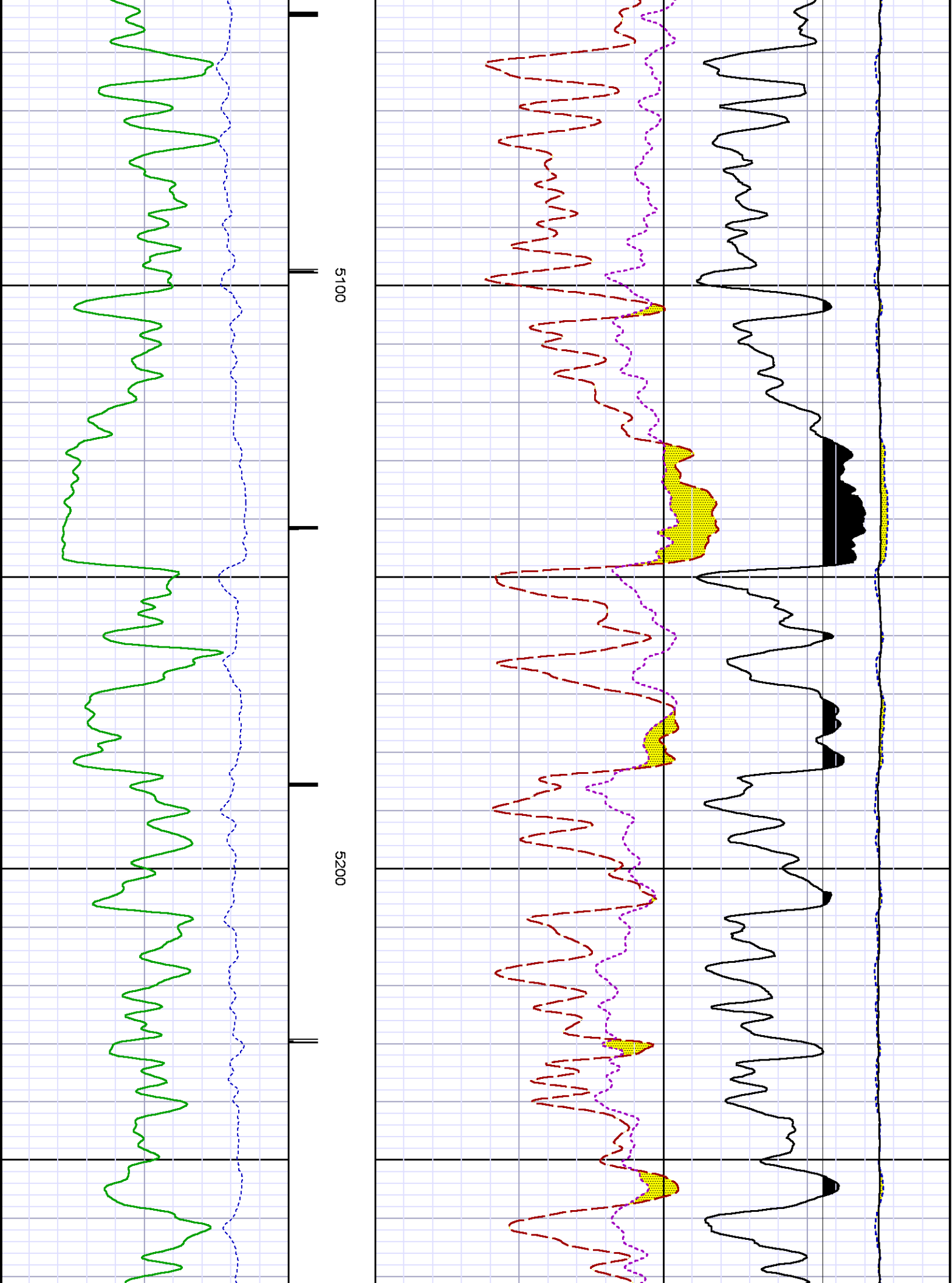


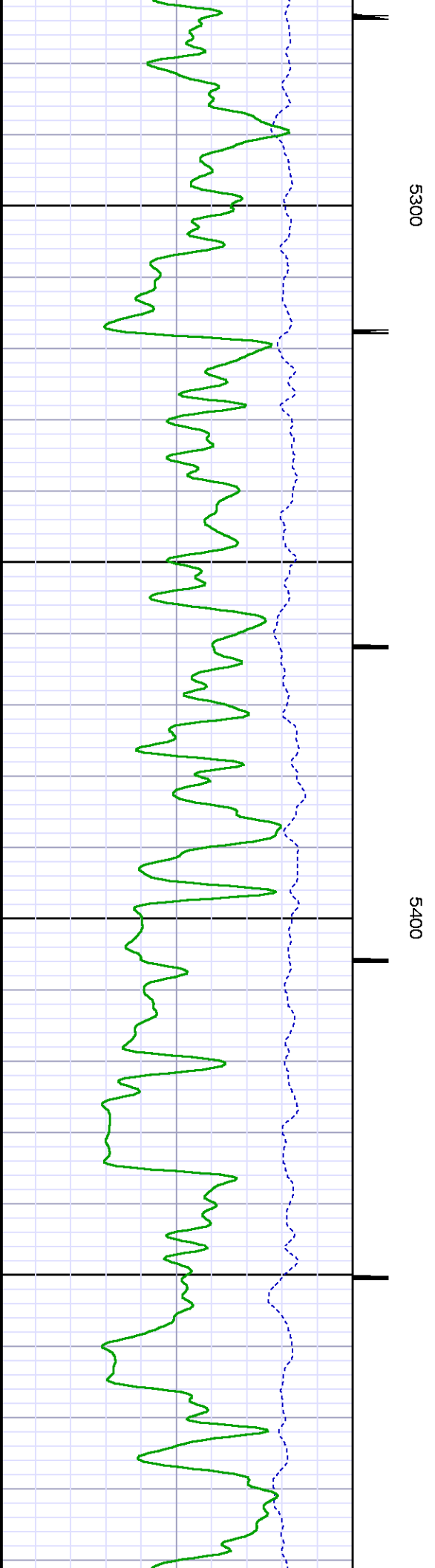
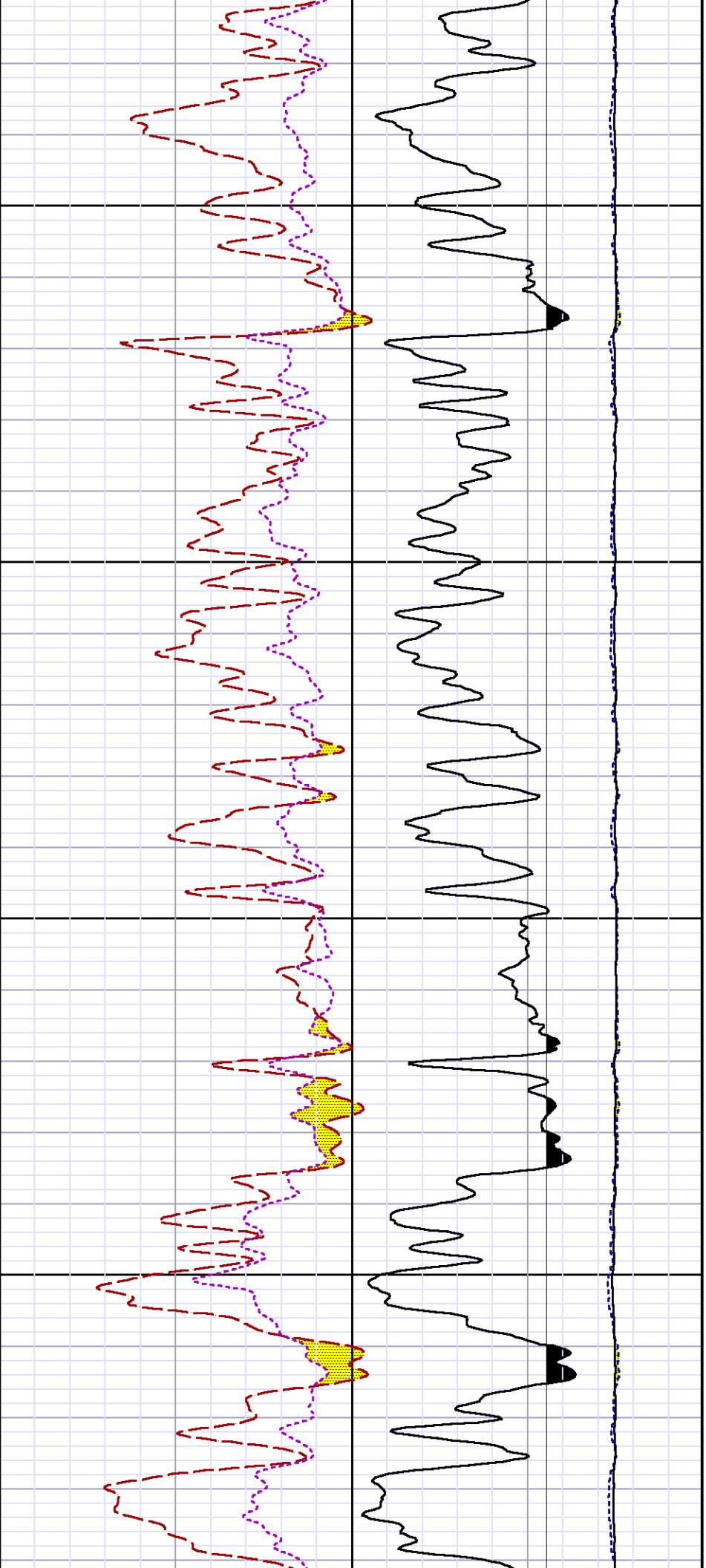


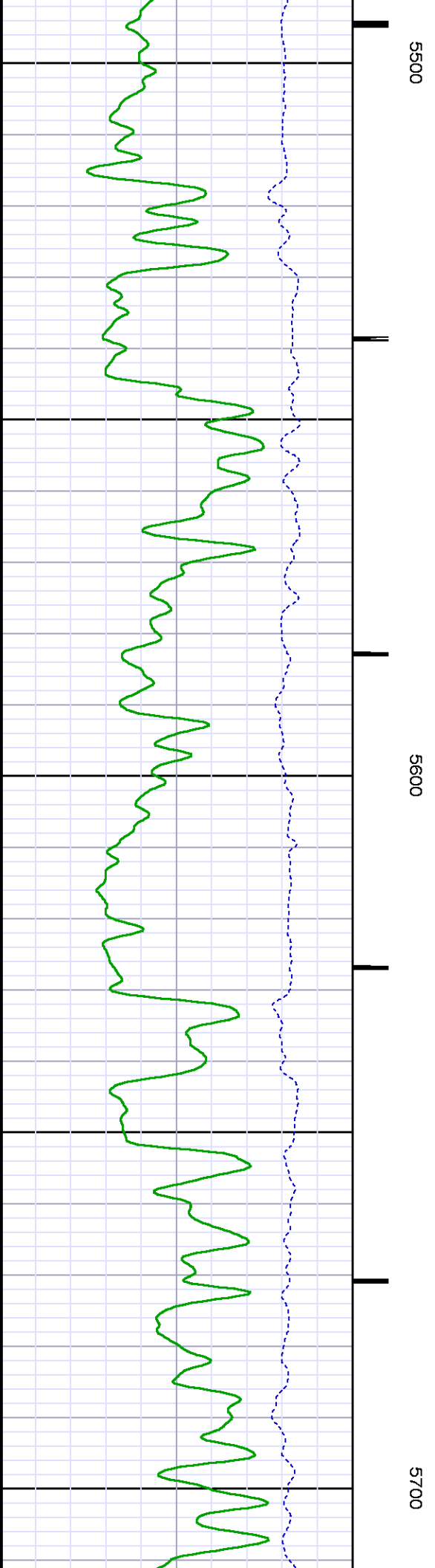
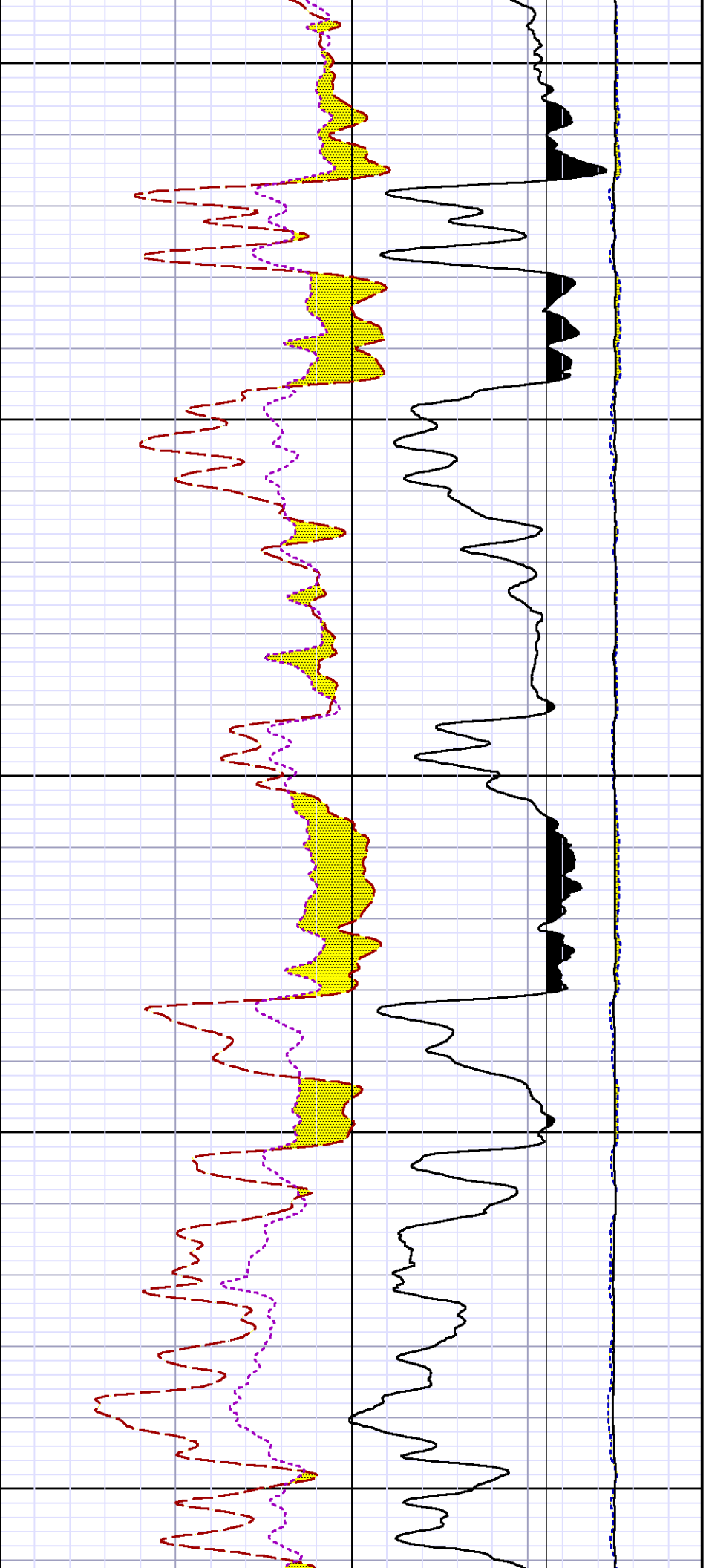


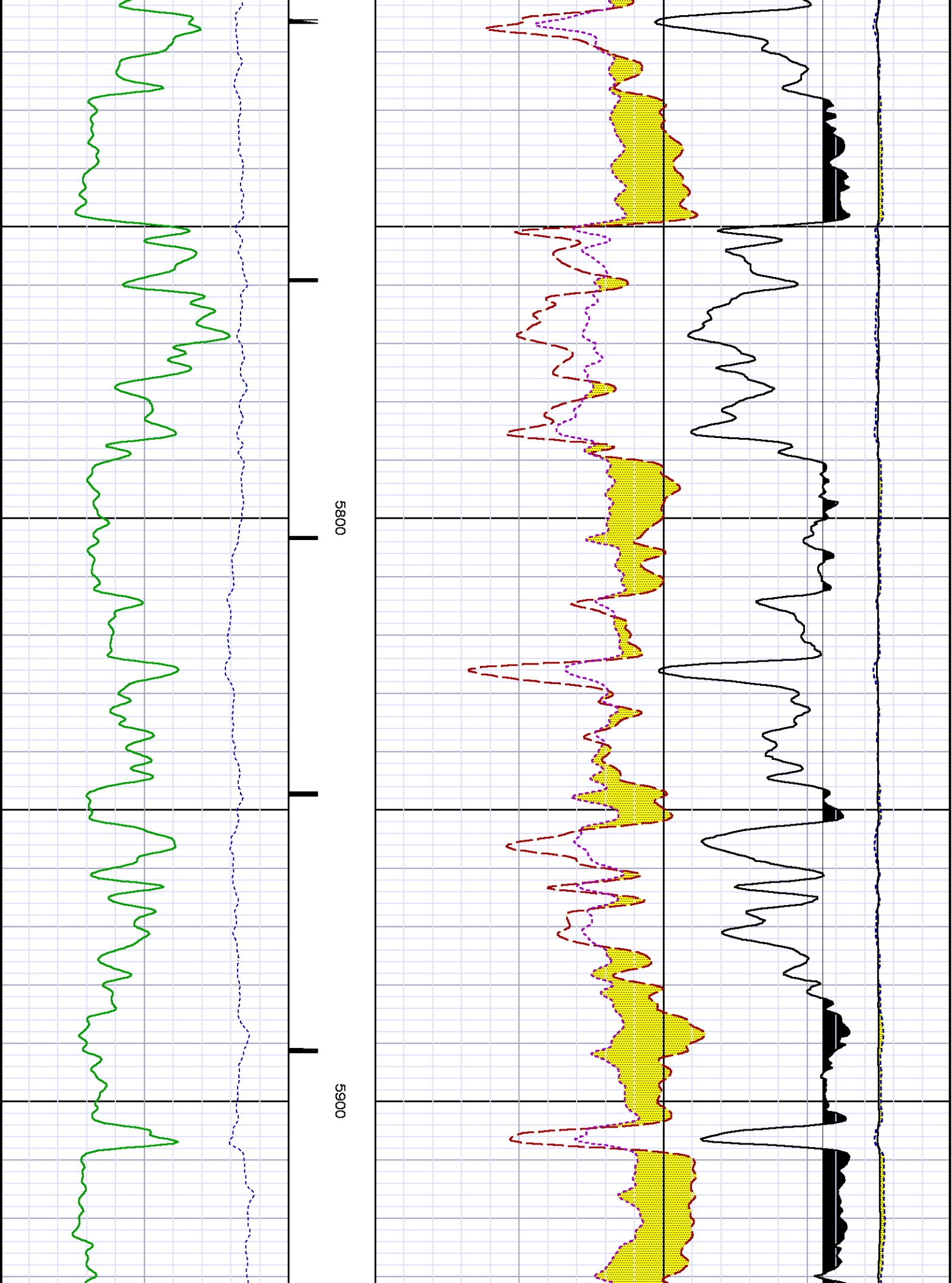


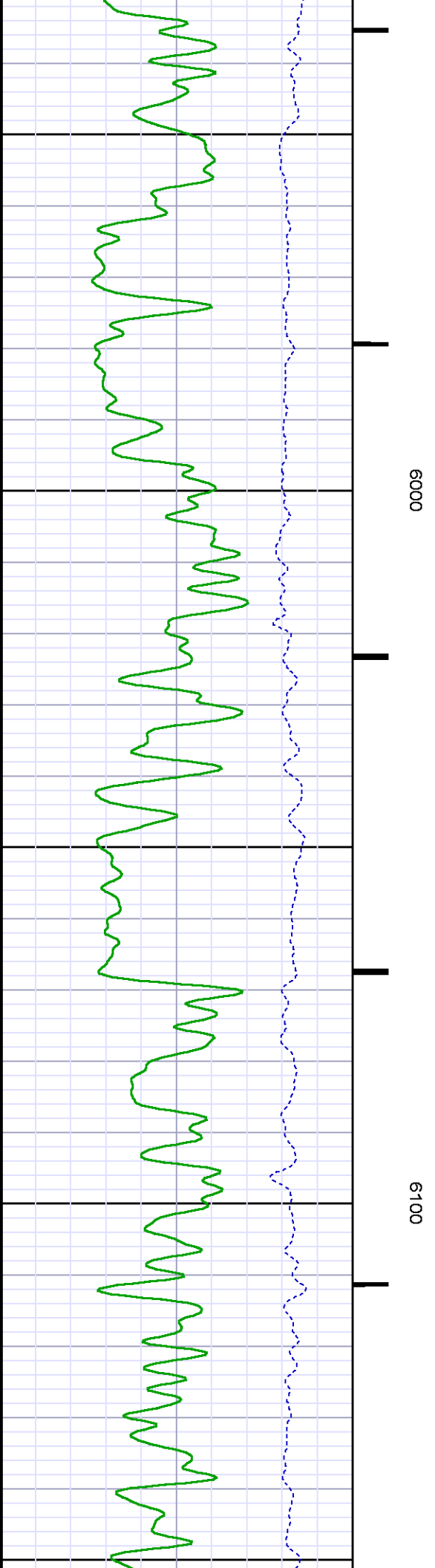
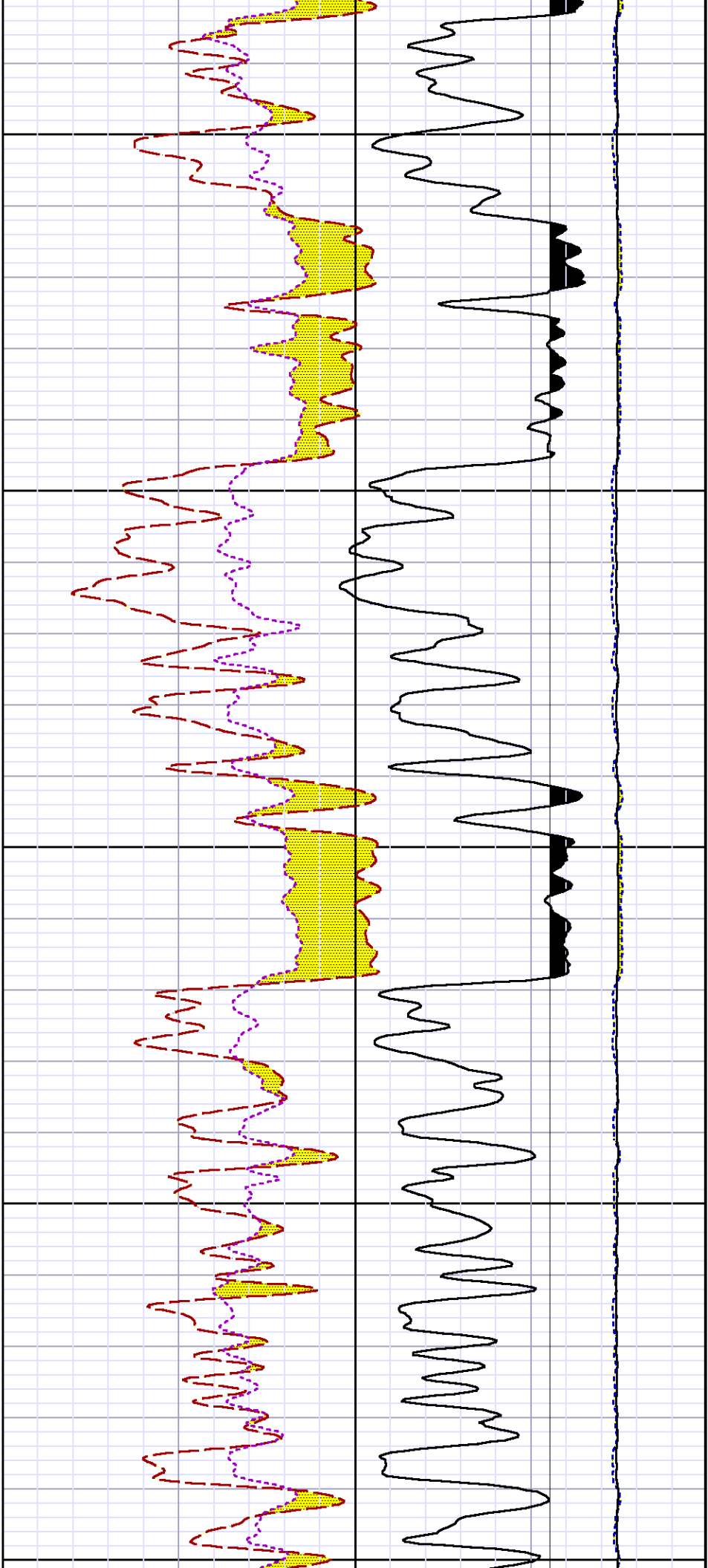


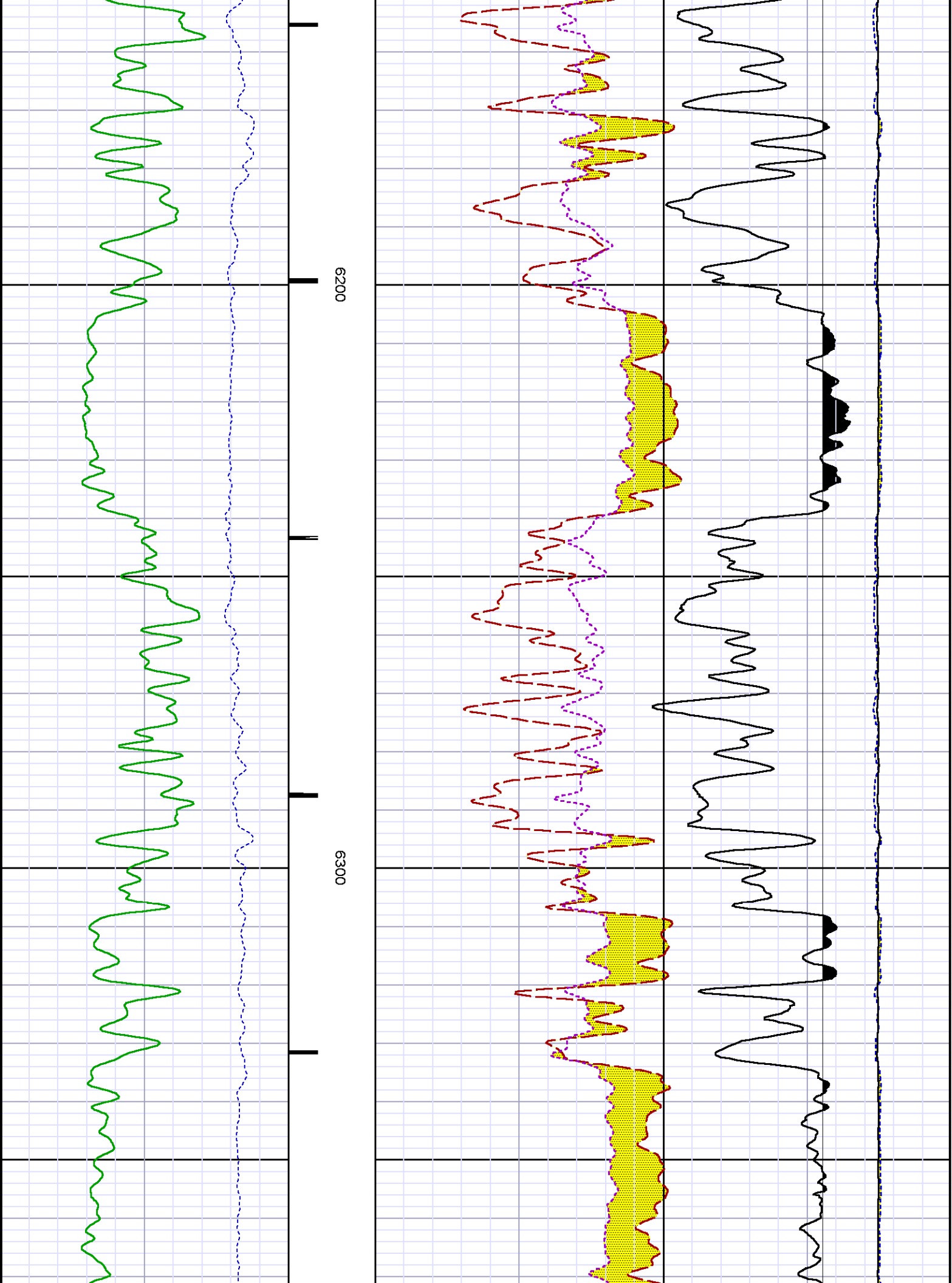


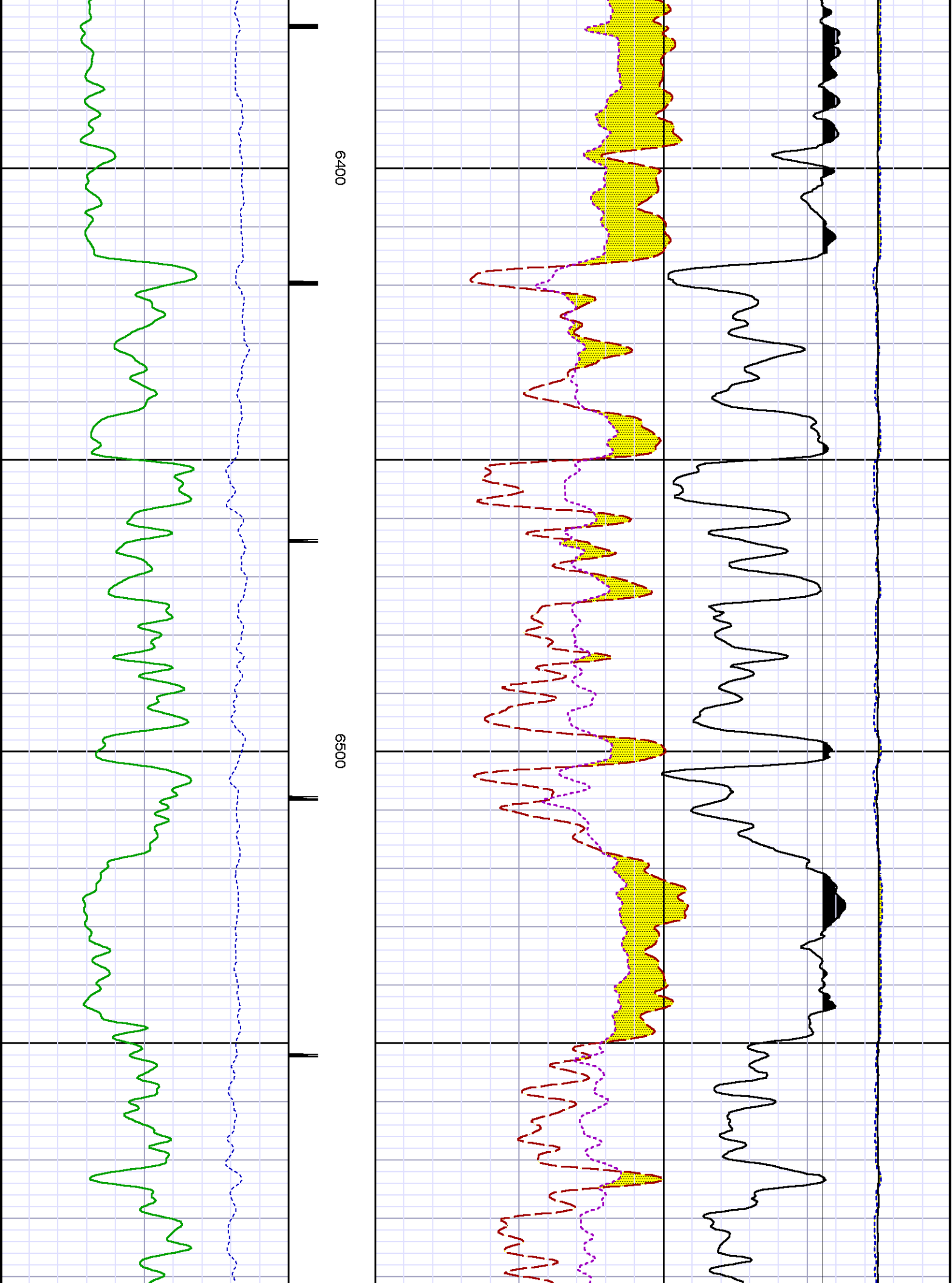


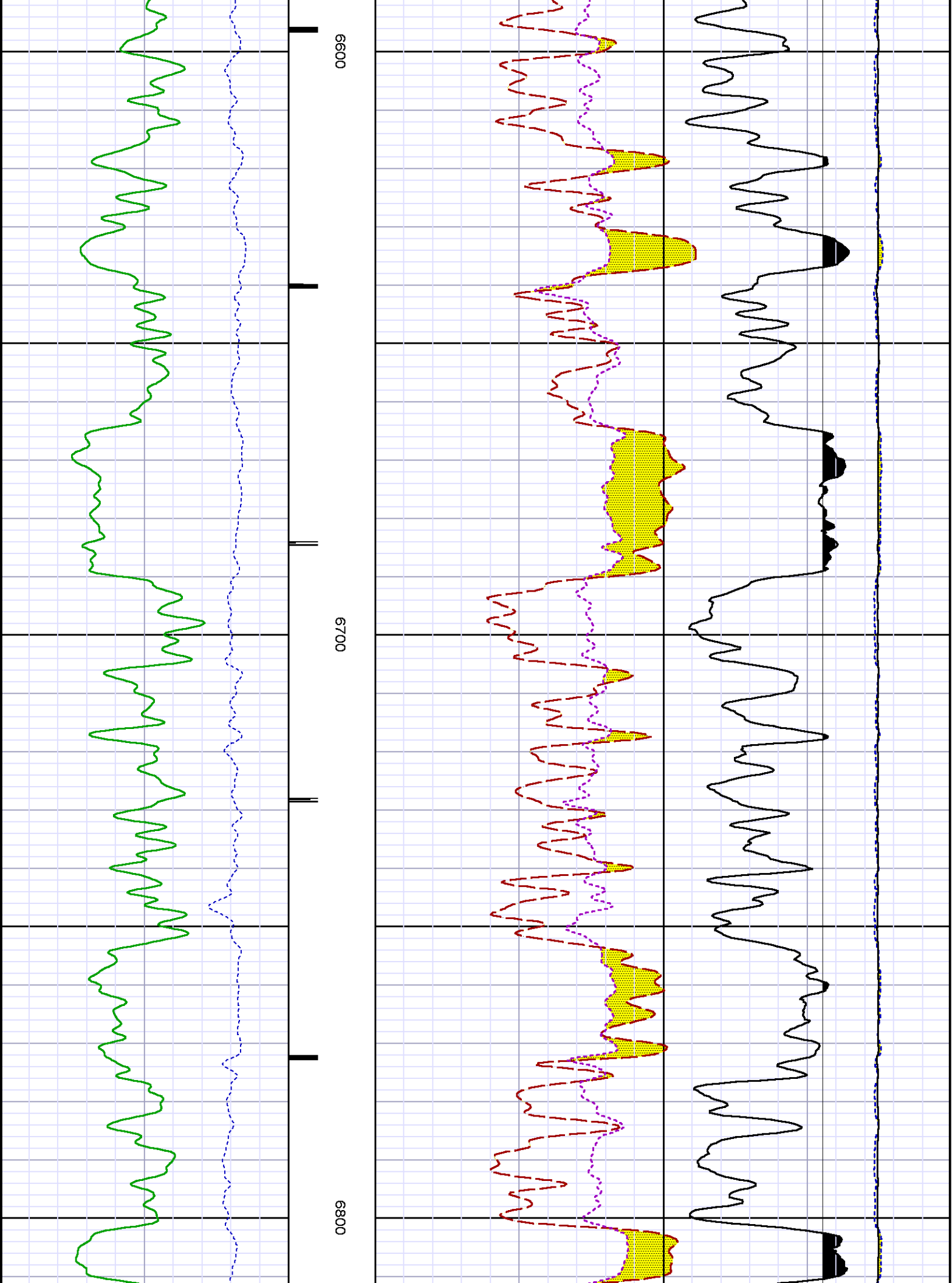


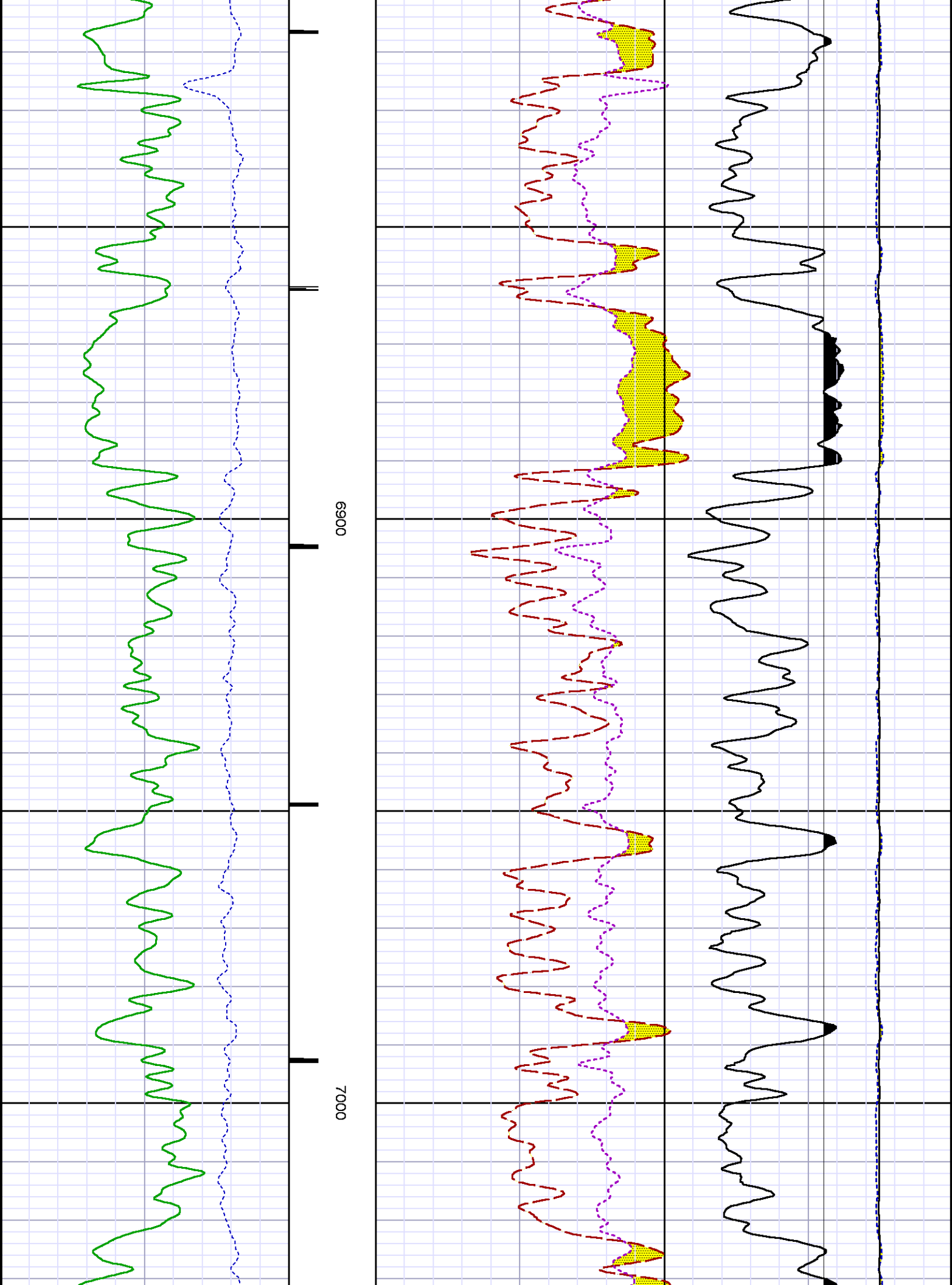


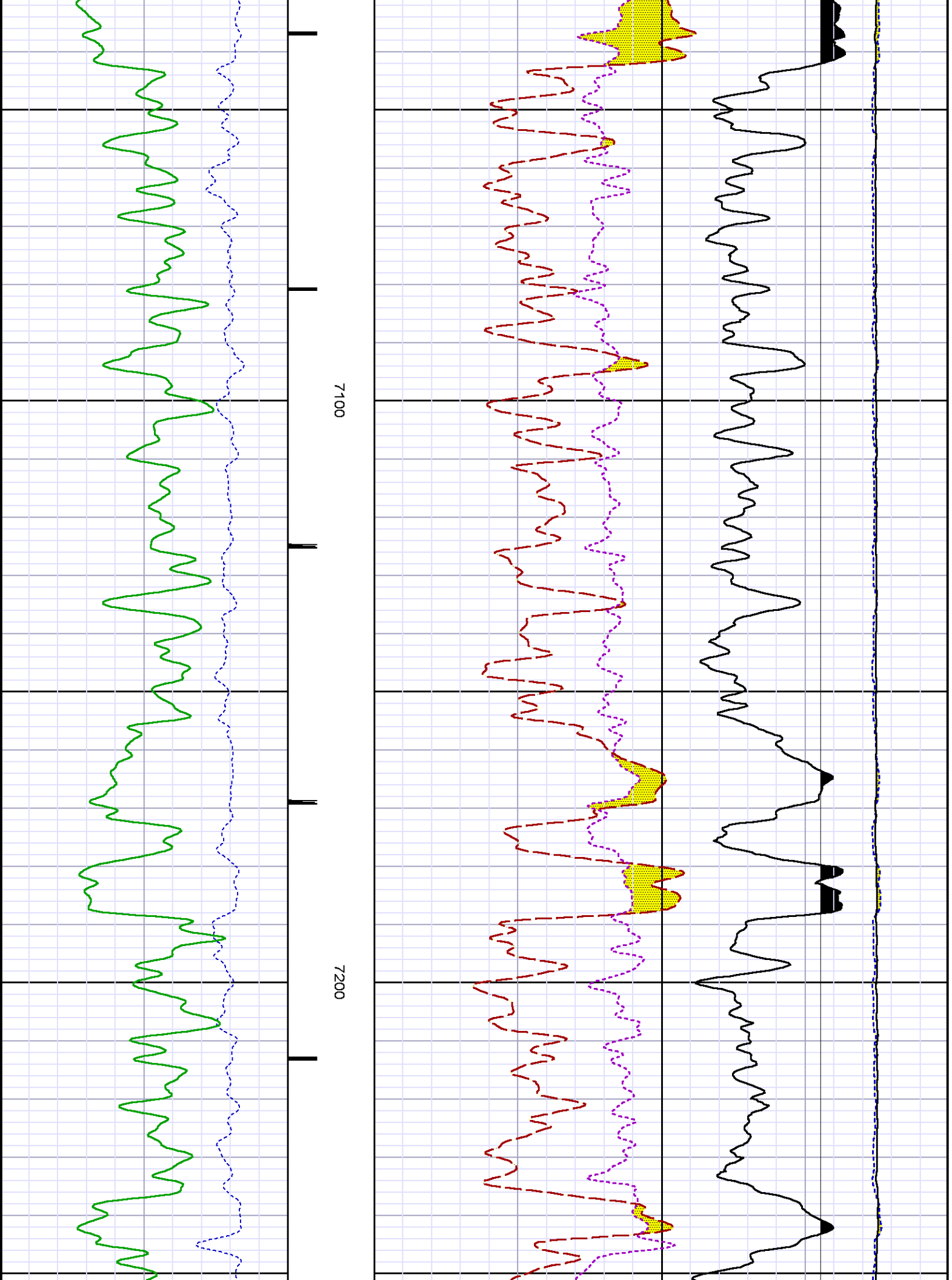


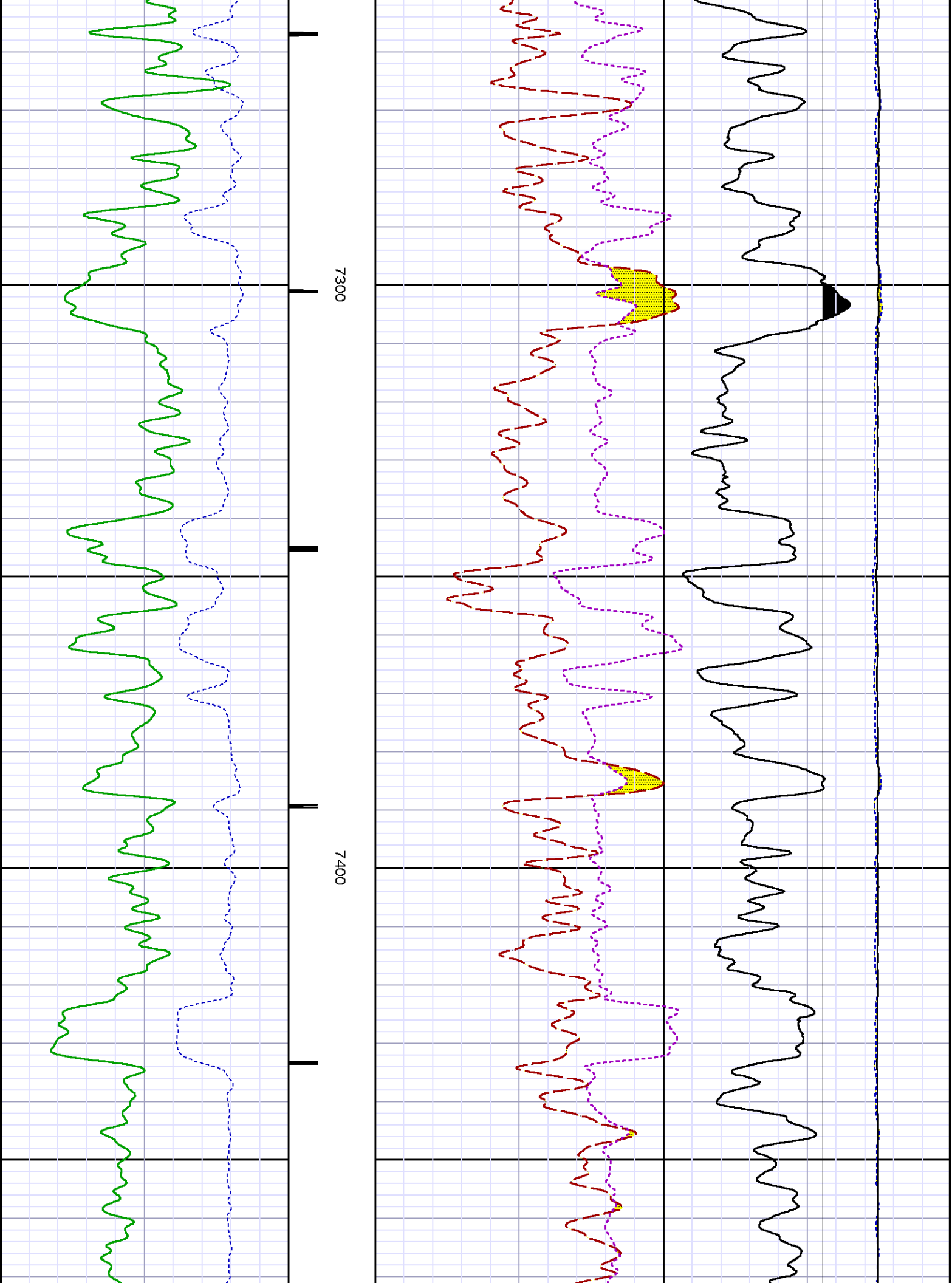


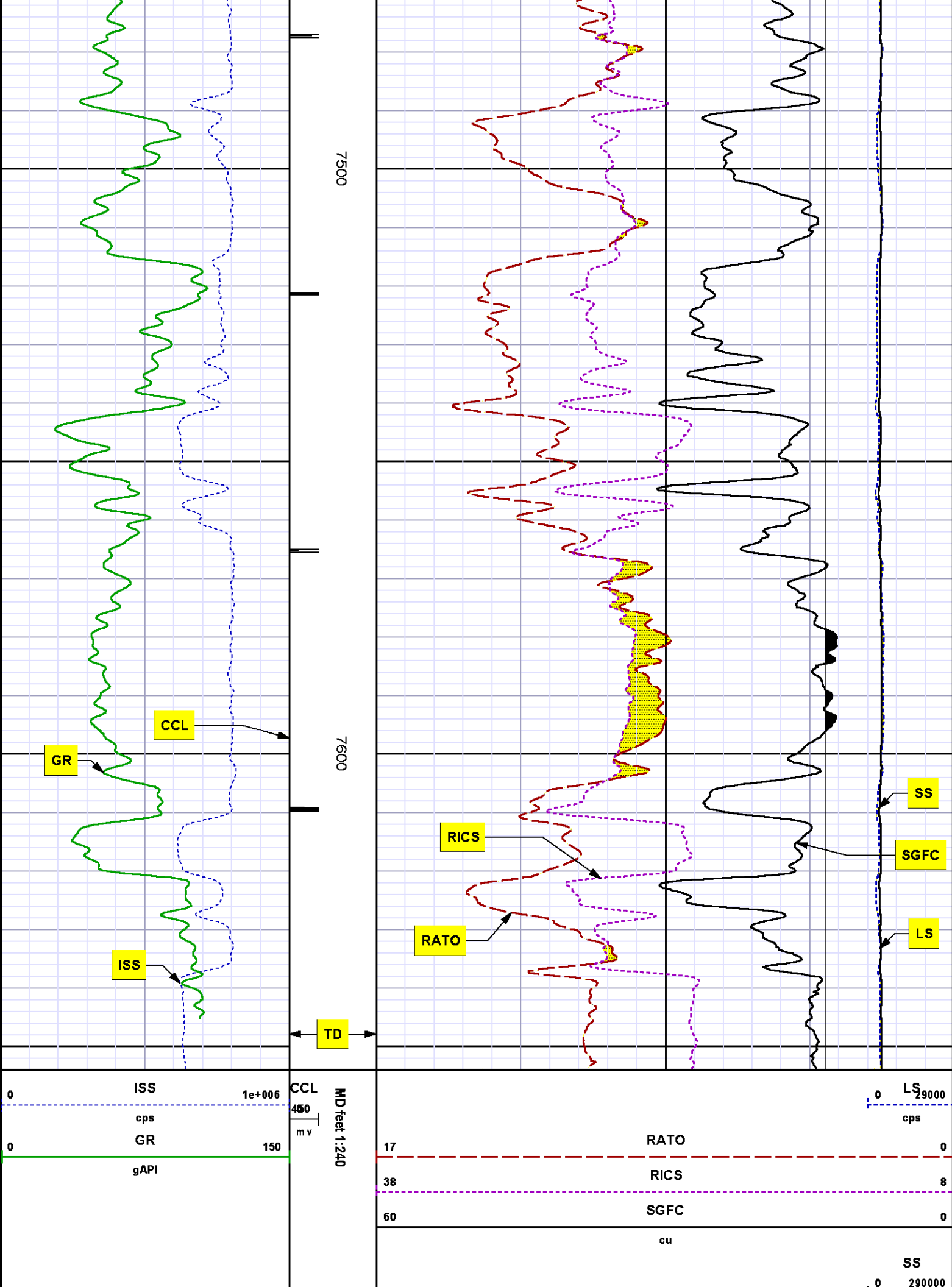












REPEAT SECTION
PNC 3-D MODE

SPL PROCESSING

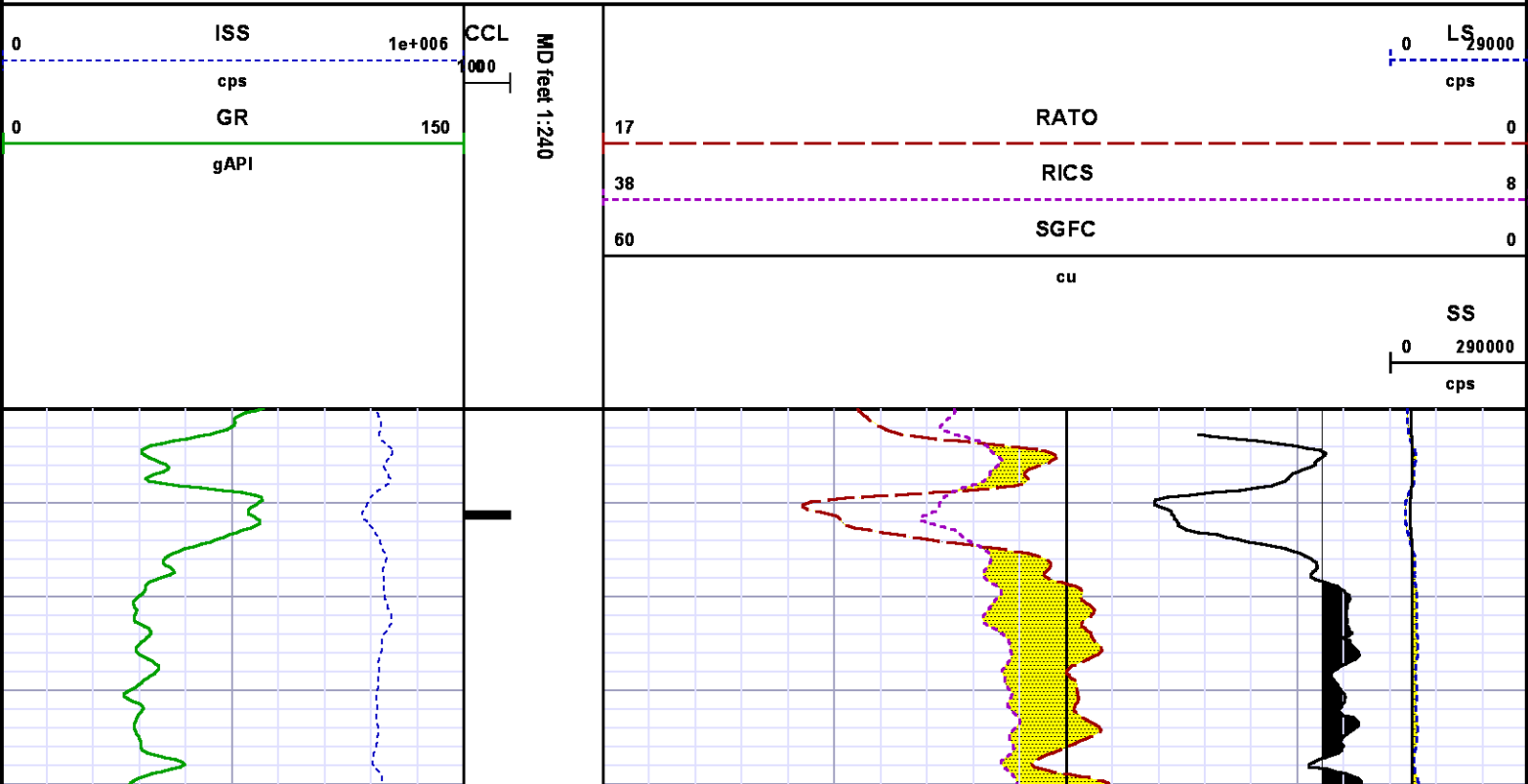
MEASUREMENT TYPE	PARAMETER	VALUE	UNITS	TOP	BOTTOM
PNC Porosity	Borehole	Cased		6845.010	7153.010
PNC Porosity	Borehole Size	8.750	inch	6845.010	7153.010
PNC Porosity	Casing Size	4.500	inch	6845.010	7153.010
PNC Porosity	Gas Filled	Non Gas Filled		6845.010	7153.010
PNC Porosity	Matrix	Sandstone		6845.010	7153.010

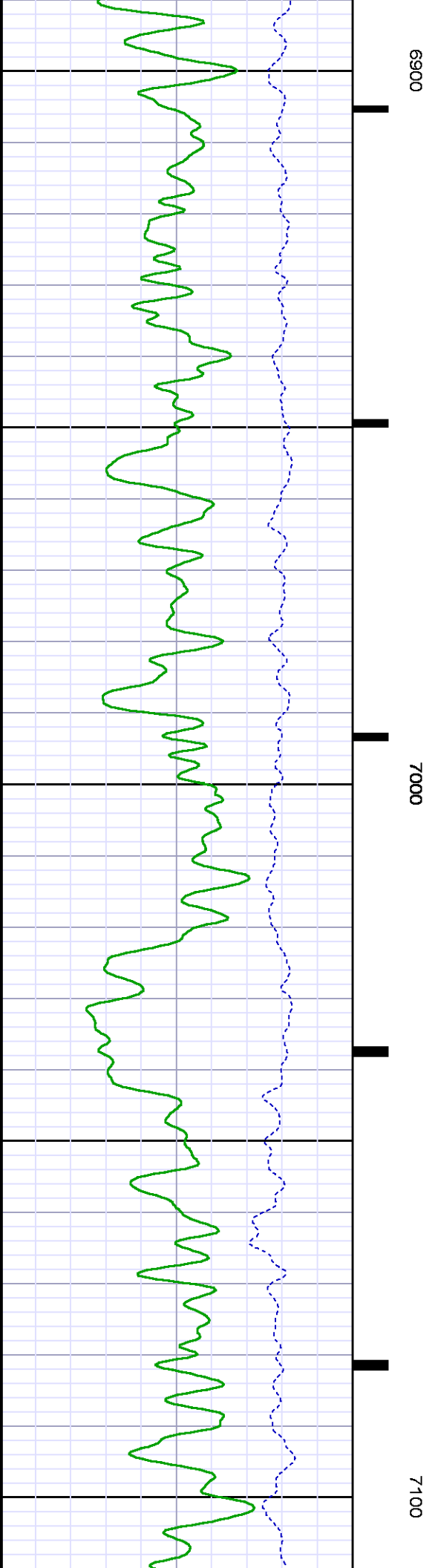
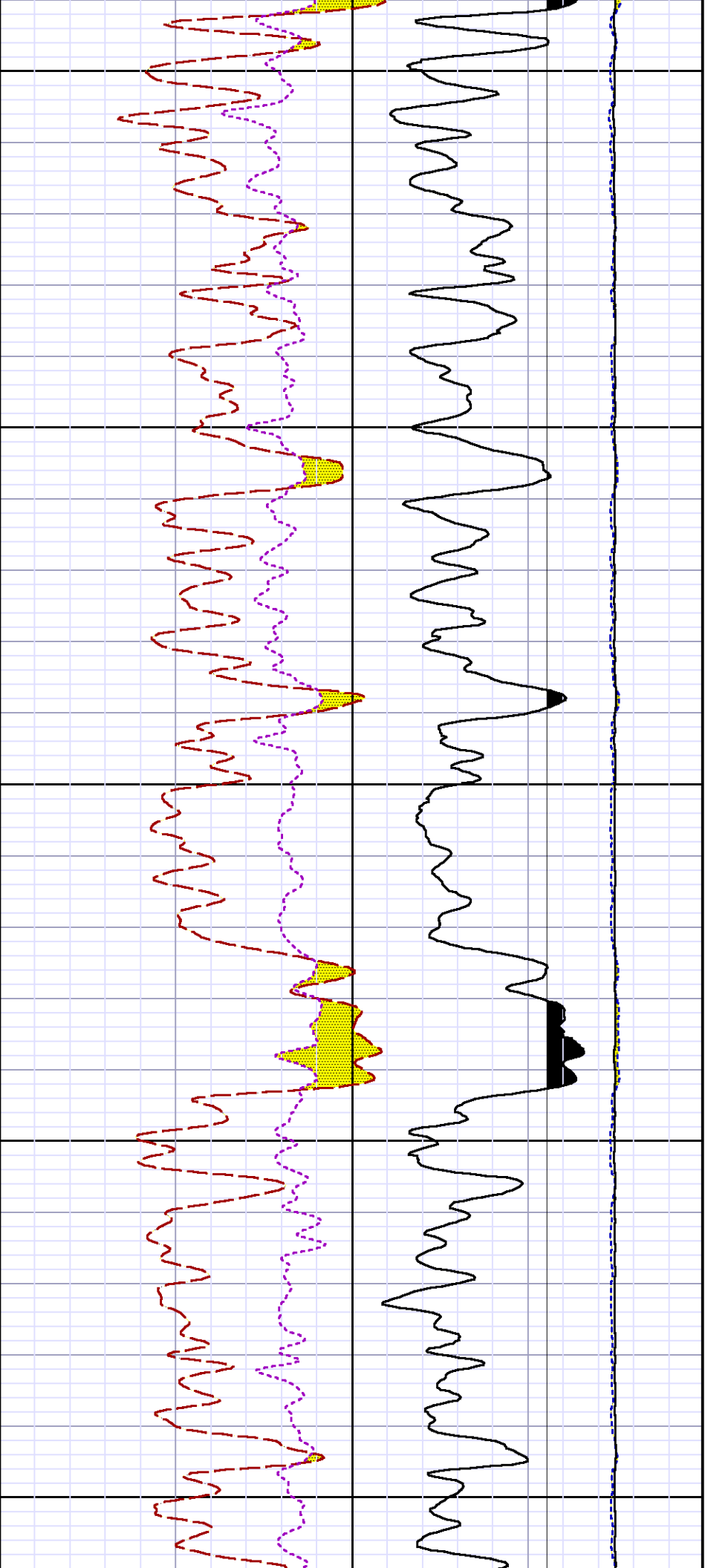
DEPTH OFFSETS
(for Acquired Curves)

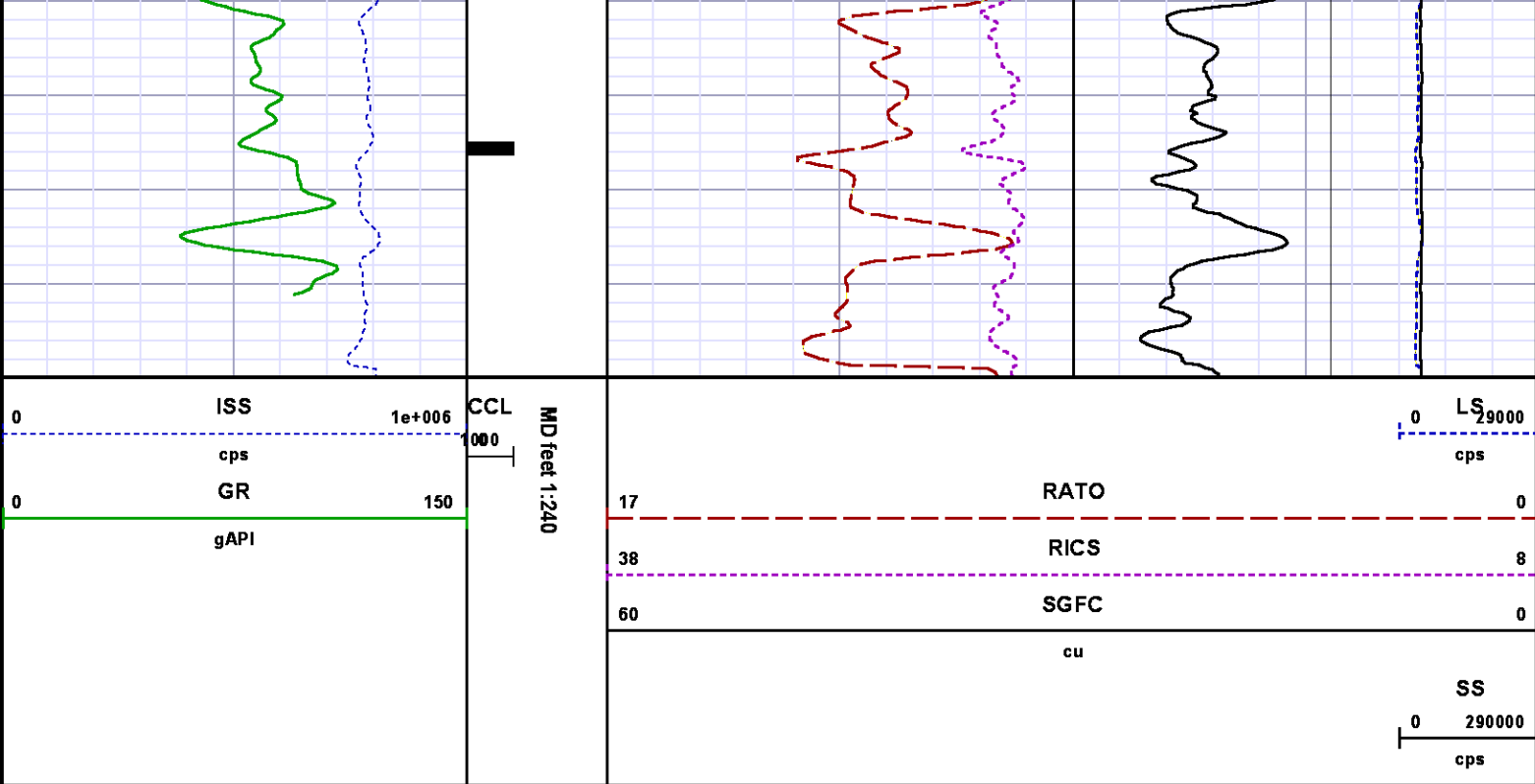
SERIES	DEPTH OFFSET	ACQUIRED CURVES
8248ED	-15.320	FLTM
8248ED	-13.320	CCL CHV
8262XA	-10.189	GR
8281XA	-0.662	HVC3Q0 SEQ3 AMA3 AML3 BKX CXS CPT3Q0 CPT3Q2 CPT3Q3 CPT3Q4 ET3 IXS MCS3 MCS3Q0 QCAL3 RGN3 RICX SDA3 SDL3 SGA3 SGL3 STA3 XS ASPEC3 AMB3 AMF3 CHF3 IXSC IXSN RATO23 RICXC RIN13C RIN23 RIN23C SD3D SG3D SGB3 SGF3 WDT3 CXSR IXSR XSR RICXR
8281XA	-0.250	HVC2Q0 SEQ2 AMA2 AMB2 AMF2 AML2 BKL CHF2 CLS CPT2Q0 CPT2Q2 CPT2Q3 CPT2Q4 ET2 ILS LS MCS2 MCS2Q0 QCAL2 RGN2 RICL RONE23 RTWO23 SDA2 SDL2 SGA2 SGB2 SGF2 SGK2 SGL2 STA2 ASPEC2 ILSC ILSN WDT3 RICLC CLSR ILSR LSR RICLR
8281XA	0.000	CPRS HVC1Q0 MV SEQ SEQ1 AMA1 AMB1 AMF1 CHF1 IXSC IXSN RATO23 RICXC RIN13C RIN23 RIN23C SD3D SG3D SGB3 SGF3 WDT3 CXSR IXSR XSR RICXR

AMB1 AME1 AMF1 AML1 BKS CHF1
CSS CORB CORF CPT1Q0 CPT1Q2 CPT1Q2A
CPT1Q2B CPT1Q2C CPT1Q3 CPT1Q4 CPT1Q5 ET1
G1 G2 GE1S GE2S ISS MCS1
MCS1Q0 QA1 QCAL1 QM1 RATO RATO13
RBOR RGN1 RICS RIN RONE RPOR
RTWO RIN13 RONE13 RTWO13 SALB SC1
SDA1 SDL1 SGA1 SGB1 SGBC SGE1
SGF1 SGFC SGK1 SGL1 SS SS2
STA1 PD1S PD2S PD3S MD1S MD2S
MD3S DG1S DG2S DG3S PD1M PD2M
PD3M MD1M MD2M MD3M DG1M DG2M
DG3M MVS MA MVM FILV IAM
TA PVM PVS IAS SSTAT QPD1
QPD2 QPD3 QMD1 QMD2 QMD3 QDG1
QDG2 QDG3 QMA QTA QFILV QMV
QPV QIA DERR DCNT QPK1 QSA1
PKS1 ASPEC1 H0C FE2XC ISSC RINC
ISSN RDEN WIDTH1 RICSC CSSR G1R
G2R ISSR SSR SS2R RATOR RATO13R
RBORR RICSR RINR RIN13R RONER RPORR
RTWOR
SYSTEM 0.000 TEN TTEN

Created by : RPM9, v5.3.1.0
Plotted by : PlotMgr, v5.4.504
Company : WPX ENERGY
Well : GOLDSBOROUGH PA 522-11
File Name : d:\well\data\wpx energy\pa 522-11\522rpm\repeat.xtf
Mode : PlotMgr 5.4.504
Interval : 6850.00 - 7150.00 feet UP
Created : 6/14/2013 3:04:58 PM







CALIBRATION SUMMARY

GAMMA RAY

Calibration File: C:\case\calver\GR\055M3.cal

CALIBRATION SUMMARY						
DATE/TIME PERFORMED:		Thu May 23 15:50:01 2013		TOOL SERIES:	8262XA	ASSET: 055
SEQ:		M3				
Calibrator #	Background	Calibrator On	Multiplicative	Background	Calibrator On	Differential
	[cps]	[cps]		[api]	[api]	[api]
JIG WA612	81.82	380.87	0.602	49.25	229.25	180.00

Verification File: C:\case\calver\GR\055M3.VP

PRIMARY VERIFICATION						
DATE/TIME PERFORMED:		Thu May 23 15:52:39 2013		TOOL SERIES:	8262XA	ASSET: 055
SEQ:		M3				
Calibrator #	Background	Calibrator On	Multiplicative	Background	Calibrator On	Differential
	[cps]	[cps]		[api]	[api]	[api]
JIG WA612	83.76	386.09	0.602	50.41	232.39	181.98

END

Calibration File: C:\case\calver\PNC\555M2.cal

PNC 3D CALIBRATION SUMMARY

DATE/TIME PERFORMED: Tue May 21 09:17:51 2013 TOOL SERIES: 8281XA ASSET: 555 SEQ: M2

Calibrator #

SHOP BARREL

Source #

8281AA 11765054

	ISS	Mtr VIts (V)	SS Gain	LS Gain	XLS Gain	EA Temp (degF)	Sync Delay (usec)	RCAL
Raw Data	825801	124.00	2324.00	2263.00	2220.00	104.73	7.00	0.9870
Interpolated	1300000	143.19	2300.31	2259.89	2213.63			

	ISS	BKS	BKL	BKX	SGA1	SDA1	SGA2	SDA2
Raw Data	825801	6724.23	1067.27	150.65	25.75	0.14	24.34	0.27
					25.35 26.40	0.00 0.20	23.60 24.80	0.00 0.40

	ISS	ILS	IXS	SS	SS2	LS	CSS	CLS
Raw Data	825801	177545.13	27464.62	92527.89	32951.94	8637.92	55993.96	13816.16
Fit Quality %		0.40	0.68	0.70	0.71	0.41	0.66	0.46

	ISS	RBOR	RIN ISS/ILS	RIN13 ISS/IXS	RICS ISS/CSS	RATO SS/LS	RTWO SS2/LS	RONE CSS/CLS
Raw Data	825801	1.43	4.65	30.07	14.75	10.71	3.81	4.05
		1.42 1.45	3.55 5.52	22.20 32.70	10.99 16.34	10.06 11.10	3.57 3.95	3.76 4.22
Fit Quality %		0.04	0.39	0.32	0.19	0.15	0.16	0.15
Reduced	1392815	1.43	4.68	30.20	14.84	10.70	3.81	4.05
		1.42 1.45	4.33 5.52	27.60 32.70	13.70 16.34	10.06 11.10	3.57 3.95	3.76 4.22

TOOL DIAGRAM

OTA SHORT CABLE HEAD

PCM POWER SUPPLY

Series 8250EA

Mnemonic PCM

Pin 1 30V

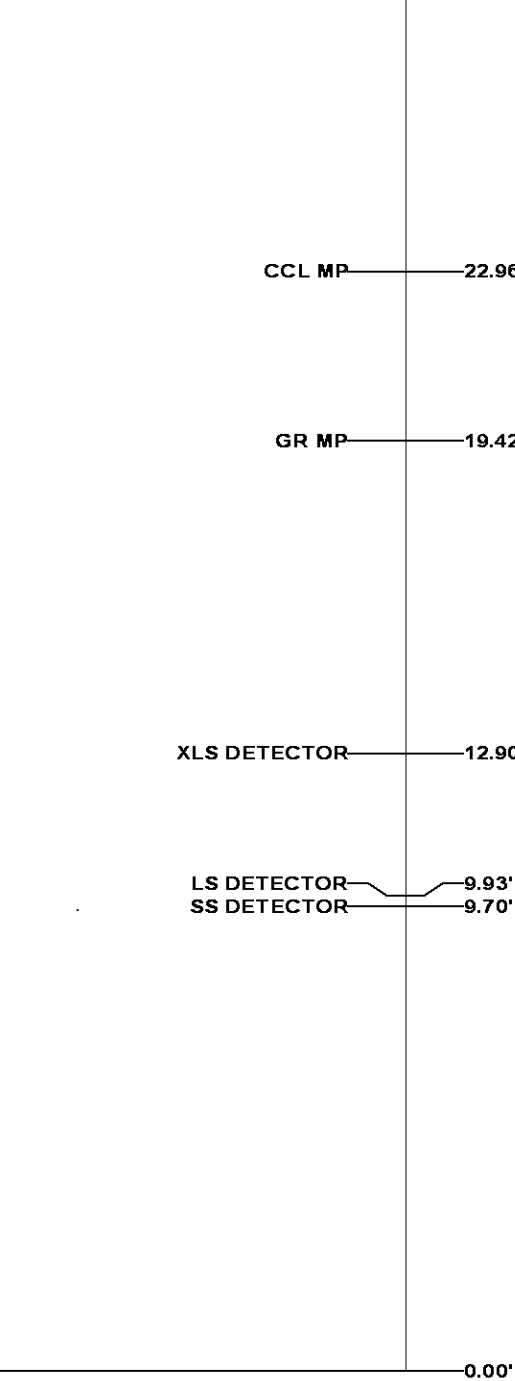
31.05'

Diameter	1.70"
Weight	18.00 lb
Length	3.86'
Temp Rating	350.00 °F



TELEMETRY / CCL	
Series	8248EA
Mnemonic	PCM
Diameter	1.70"
Weight	20.00 lb
Length	4.46'
Measure Point	1.00' CCL MP
Temp Rating	350.00 °F
Press Rating	15000.00 PSI

GAMMA RAY	
Series	8262XA
Mnemonic	GR
Diameter	1.70"
Weight	15.00 lb
Length	3.17'

RESERVOIR PERFORMANCE MONITOR	
Series	8281XA
Mnemonic	RPM
Diameter	1.70"
Weight	75.00 lb
Length	18.58'
Measure Point	9.49' SS DETECTOR
Measure Point	9.72' LS DETECTOR
Measure Point	12.69' XLS DETECTOR
Temp Rating	350.00 °F
Press Rating	20000.00 PSI



Total Length: 31.05'
Total Weight: Not Available
Max Diameter: 0' 1.70"

<div> BAKER HUGHES</div> <div>Baker Atlas</div> <div></div>	Company		WPX ENERGY		File No:	
	Well		GOLDSBOROUGH PA 522-11		CH073168	
	Field		PARACHUTE		API No:	
	County		GARFIELD	State	COLORADO	05045218240000
Location		Elevations			PA 22-11 PAD	
SHL: 2413' FNL, 2067' FWL		KB 6296 ft			11 7S 95W	
BHL: 2356' FNL, 2105' FWL		DF			CYCLONE 17	
SEC 11		GL 6274 ft				
TWP 7S		RGE 95W				