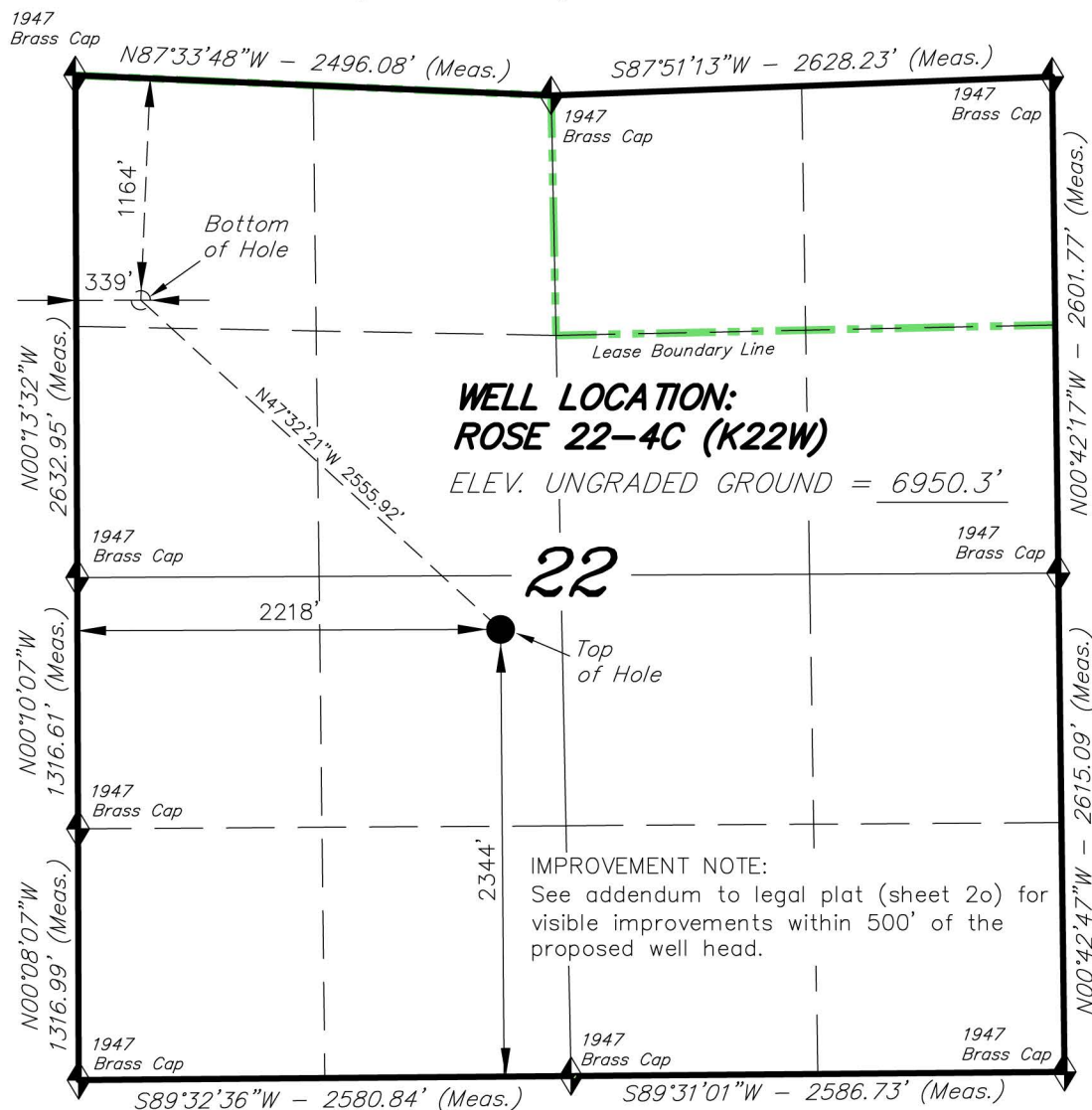


T7S, R93W, 6th P.M.



**WELL LOCATION:
ROSE 22-4C (K22W)**

ELEV. UNGRADED GROUND = 6950.3'

22

IMPROVEMENT NOTE:
See addendum to legal plat (sheet 2o) for
visible improvements within 500' of the
proposed well head.

◆ = SECTION CORNERS LOCATED

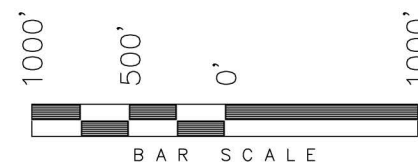
Basis of elevation is the Rifle 2 Triangulation
Station. 39°31'53.80" N Lat. & 107°47'07.78" W
Long. (NAD 83). Elevation = 5323.1' (NAVD88).

NAD 83 (SURFACE LOCATION)	
LATITUDE	= 39°25'49.93" (39.430537°)
LONGITUDE	= 107°45'41.63" (107.761565°)
NAD 83 (BOTTOM HOLE LOCATION)	
LATITUDE	= 39°26'06.98" (39.435274°)
LONGITUDE	= 107°46'05.65" (107.768237°)

ENCANA OIL & GAS (USA) INC

WELL LOCATION, ROSE 22-4C (K22W),
LOCATED AS SHOWN IN THE NE 1/4
SW 1/4 OF SECTION 22, T7S, R93W,
6th P.M. GARFIELD COUNTY, COLORADO.

TARGET BOTTOM HOLE, ROSE 22-4C
(K22W), LOCATED AS SHOWN IN THE
NW 1/4 NW 1/4 OF SECTION 22, T7S,
R93W, 6th P.M. GARFIELD COUNTY,
COLORADO.



NOTES:

1. Well footages are measured at right angles to the Section Lines.
2. Bearings are based on Global Positioning Satellite observations.
3. G.P.S. Operator: C.D. Slauch, (PDOP) = 1.4

THIS IS TO CERTIFY THAT THE ABOVE PLAT WAS
PREPARED FROM FIELD NOTES OF REAL SURVEYS
MADE BY ME OR UNDER MY SUPERVISION. THE LOCATION
HAS BEEN STAKED ON THE GROUND AS SHOWN ON THE
PLAT, AND THAT THE SAID ARE TRUE AND CORRECT
TO THE BEST OF MY KNOWLEDGE AND BELIEF.

James C. Slauch
REGISTERED LAND SURVEYOR
REGISTRATION NO. 30125
STATE OF COLORADO

TRI STATE LAND SURVEYING & CONSULTING

180 NORTH VERNAL AVE. - VERNAL, UTAH 84078
(435) 781-2501

DATE SURVEYED: 03-08-13	SURVEYED BY: C.D.S.	SHEET 2f OF 8
DATE DRAWN: 05-06-13	DRAWN BY: M.W.	
REVISED:	SCALE: 1" = 1000'	