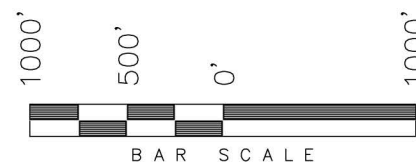


**T7S, R93W, 6th P.M.**

**ENCANA OIL & GAS (USA) INC**

WELL LOCATION, ROSE 22-9C (K22W),  
LOCATED AS SHOWN IN THE NE 1/4  
SW 1/4 OF SECTION 22, T7S, R93W,  
6th P.M. GARFIELD COUNTY, COLORADO.

TARGET BOTTOM HOLE, ROSE 22-9C  
(K22W), LOCATED AS SHOWN IN THE  
NE 1/4 SE 1/4 OF SECTION 22, T7S,  
R93W, 6th P.M. GARFIELD COUNTY,  
COLORADO.



**NOTES:**

1. Well footages are measured at right angles to the Section Lines.
2. Bearings are based on Global Positioning Satellite observations.
3. G.P.S. Operator: C.D. Slauch, (PDOP) = 1.4

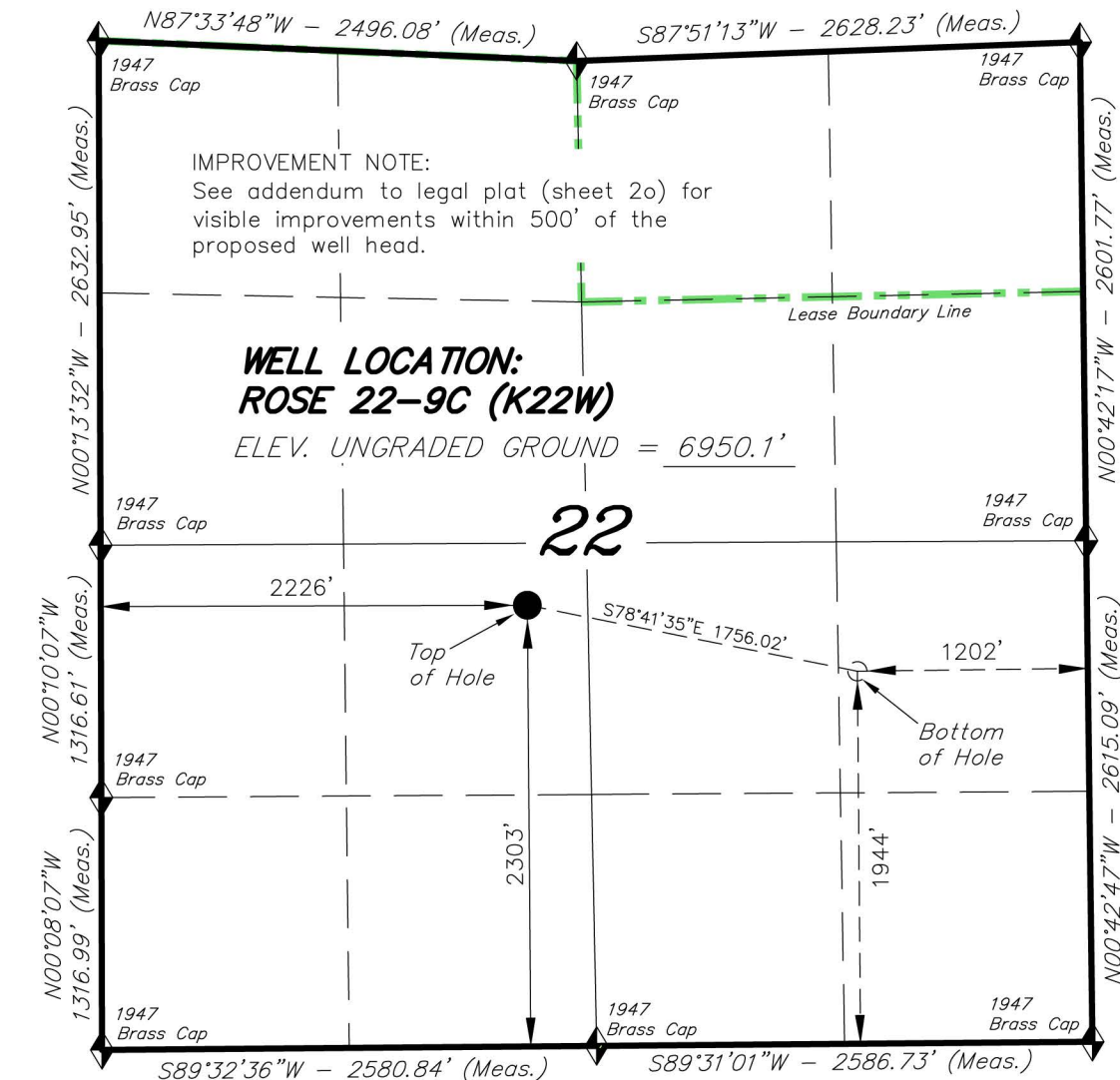
THIS IS TO CERTIFY THAT THE ABOVE PLAT WAS  
PREPARED FROM FIELD NOTES OF REAL SURVEYS  
MADE BY ME OR UNDER MY SUPERVISION. THE LOCATION  
HAS BEEN STAKED ON THE GROUND AS SHOWN ON THE  
PLAT, AND THAT THE SAID ARE TRUE AND CORRECT  
TO THE BEST OF MY KNOWLEDGE AND BELIEF.

*[Signature]*  
REGISTERED LAND SURVEYOR  
REGISTRATION NO. 30125  
STATE OF COLORADO  
# 30125

**TRI STATE LAND SURVEYING & CONSULTING**

180 NORTH VERNAL AVE. - VERNAL, UTAH 84078  
(435) 781-2501

DATE SURVEYED: 03-08-13	SURVEYED BY: C.D.S.	SHEET <b>2a</b> OF 8
DATE DRAWN: 05-06-13	DRAWN BY: M.W.	
REVISED:	SCALE: 1" = 1000'	



◆ = SECTION CORNERS LOCATED

Basis of elevation is the Rifle 2 Triangulation  
Station. 39°31'53.80" N Lat. & 107°47'07.78" W  
Long. (NAD 83). Elevation = 5323.1' (NAVD88).

NAD 83 (SURFACE LOCATION)	
LATITUDE	= 39°25'49.52" (39.430424°)
LONGITUDE	= 107°45'41.53" (107.761537°)
NAD 83 (BOTTOM HOLE LOCATION)	
LATITUDE	= 39°25'46.12" (39.429477°)
LONGITUDE	= 107°45'19.59" (107.755443°)