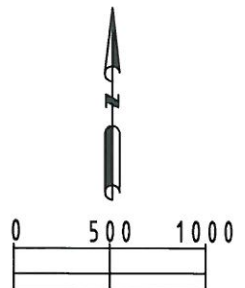
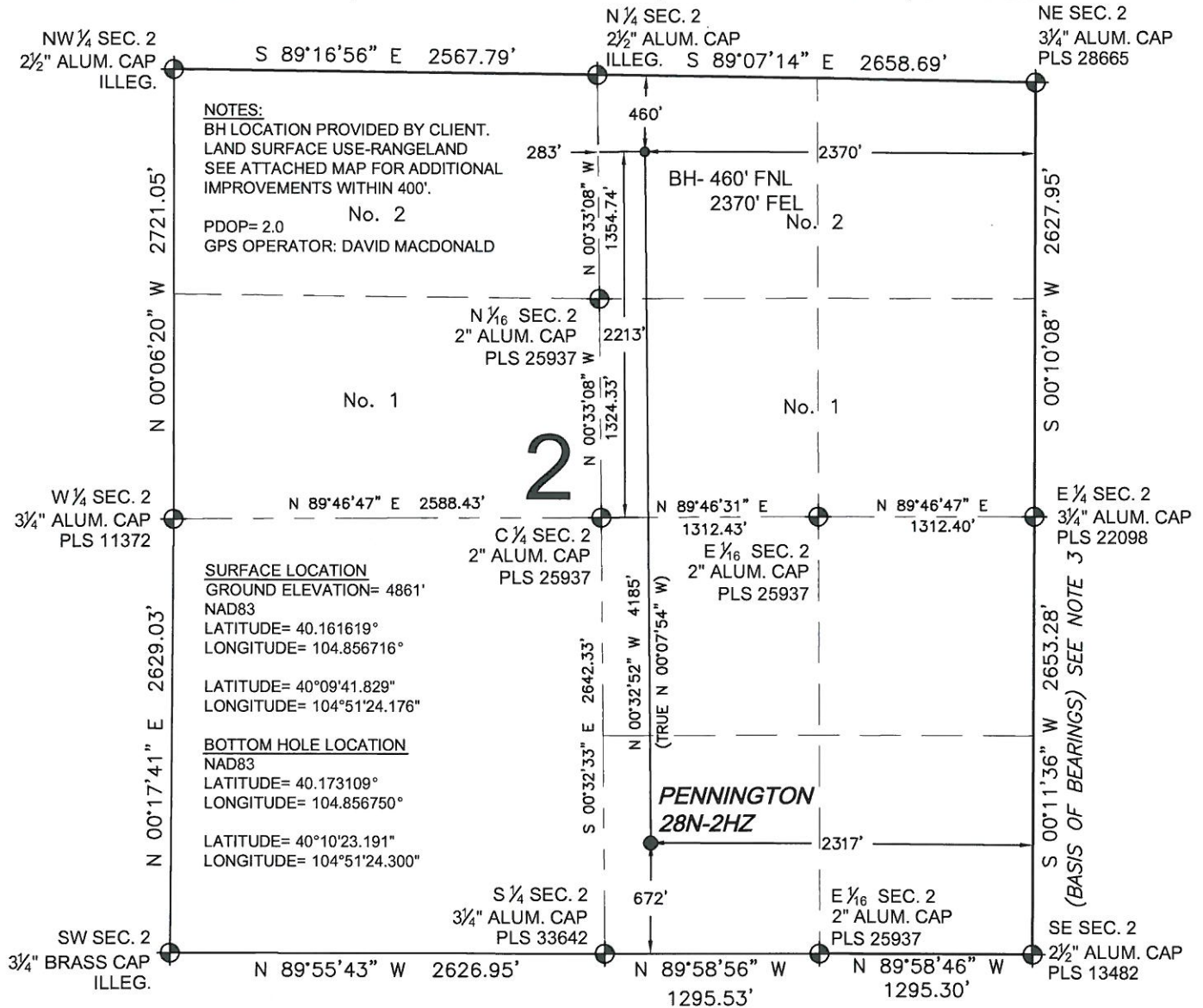



# WELL LOCATION CERTIFICATE: PENNINGTON 28N-2HZ

SECTION 2, TOWNSHIP 2 NORTH, RANGE 67 WEST, 6TH P.M.



<b>PREPARED BY:</b>  Petroleum Field Services, LLC 1801 W. 13th Ave. Denver, CO 80204	<b>FIELD DATE:</b> 03-15-13	<b>SURFACE LOCATION:</b> SW 1/4 SE 1/4, SEC. 2, T2N, R67W, 6TH P.M.
	<b>DRAWING DATE:</b> 03-22-13	<b>WELD COUNTY, COLORADO</b>
	<b>BY:</b> CLM	<b>CHECKED:</b> TJN