

DIRECTIONAL SURVEY SKETCH
T4S, R64W, 6th P.M.

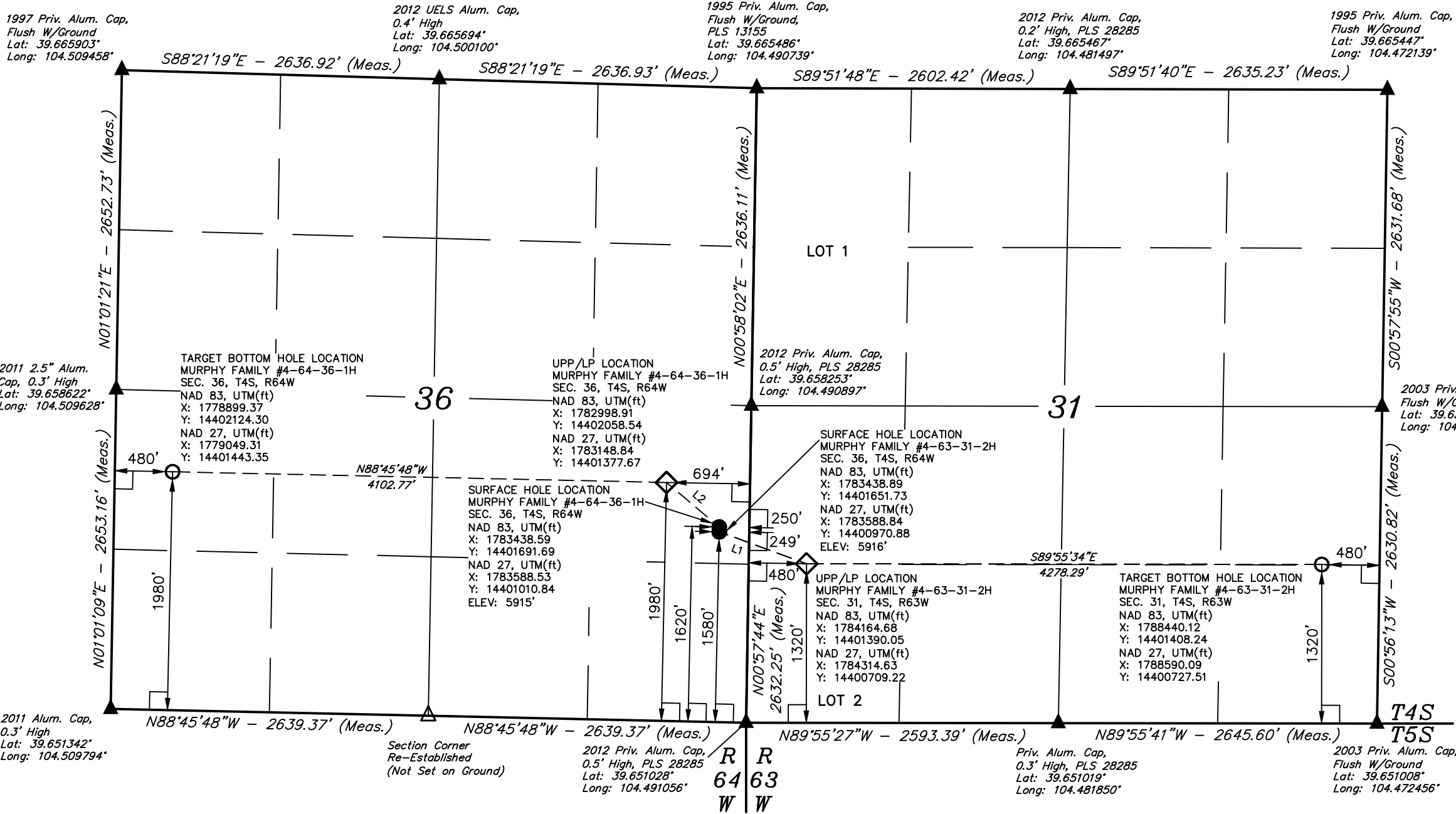
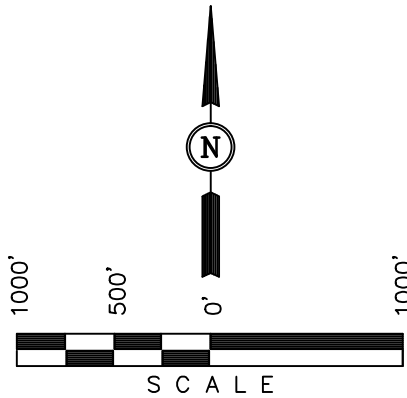
ConocoPhillips Company
Well location, MURPHY FAMILY #4-63-31-2H & MURPHY FAMILY #4-64-36-1H, located as shown in the NE 1/4 SE 1/4 of Section 36, T4S, R64W, 6th P.M., Arapahoe County, Colorado.

BASIS OF ELEVATION

BENCHMARK 374 LOCATED ON THE SECTION LINE BETWEEN SECTIONS 12 & 13, T5S, R64W, 6th. P.M., TAKEN FROM 1988 PUBLISHED DATUM BY THE UNITED STATES DEPARTMENT OF THE INTERIOR, GEOLOGICAL SURVEY AS BEING 6054.61 FEET.

BASIS OF BEARINGS

BASIS OF BEARINGS IS A G.P.S. OBSERVATION.



LEGEND:

- 90° SYMBOL
- PROPOSED WELL HEAD.
- SECTION CORNERS LOCATED.
- TARGET BOTTOM HOLE
- UPP/LP
- SECTION CORNERS RE-ESTABLISHED.
(Not Set on Ground.)

LINE TABLE		
LINE	DIRECTION	LENGTH
L1	S69°51'21"E	772.02'
L2	N49°50'32"W	573.00'

MURPHY FAMILY #4-64-36-1H		
NAD 83 (UPP/LP)	NAD 83 (TARGET BOTTOM HOLE)	NAD 83 (SURFACE LOCATION)
LATITUDE = 39°39'23.41" (39.656503)	LATITUDE = 39°39'24.29" (39.656747)	LATITUDE = 39°39'19.76" (39.655489)
LONGITUDE = 104°29'36.24" (104.493400)	LONGITUDE = 104°30'28.67" (104.507964)	LONGITUDE = 104°29'30.65" (104.491847)
NAD 27 (UPP/LP)	NAD 27 (TARGET BOTTOM HOLE)	NAD 27 (SURFACE LOCATION)
LATITUDE = 39°39'23.46" (39.656517)	LATITUDE = 39°39'24.34" (39.656761)	LATITUDE = 39°39'19.81" (39.655503)
LONGITUDE = 104°29'34.37" (104.492881)	LONGITUDE = 104°30'26.80" (104.507444)	LONGITUDE = 104°29'28.78" (104.491328)
MURPHY FAMILY #4-63-31-2H		
NAD 83 (UPP/LP)	NAD 83 (TARGET BOTTOM HOLE)	NAD 83 (SURFACE LOCATION)
LATITUDE = 39°39'16.74" (39.654650)	LATITUDE = 39°39'16.67" (39.654631)	LATITUDE = 39°39'19.37" (39.655381)
LONGITUDE = 104°29'21.38" (104.489272)	LONGITUDE = 104°28'26.70" (104.474083)	LONGITUDE = 104°29'30.64" (104.491844)
NAD 27 (UPP/LP)	NAD 27 (TARGET BOTTOM HOLE)	NAD 27 (SURFACE LOCATION)
LATITUDE = 39°39'16.79" (39.654664)	LATITUDE = 39°39'16.72" (39.654644)	LATITUDE = 39°39'19.42" (39.655394)
LONGITUDE = 104°29'19.51" (104.488753)	LONGITUDE = 104°28'24.83" (104.473564)	LONGITUDE = 104°29'28.77" (104.491325)

CERTIFICATE
THIS IS TO CERTIFY THAT THE ABOVE PLAT WAS PREPARED FROM FIELD NOTES OF ACTUAL SURVEYS MADE BY ME OR UNDER MY SUPERVISION AND THAT THE SAME ARE TRUE AND CORRECT TO THE BEST OF MY KNOWLEDGE AND BELIEF.
REGISTERED LAND SURVEYOR
REGISTRATION NO. 17492
STATE OF COLORADO
06-27-13

UINTAH ENGINEERING & LAND SURVEYING		
85 SOUTH 200 EAST - VERNAL, UTAH 84078 (435) 789-1017		
SCALE 1" = 1000'	DATE SURVEYED: 10-11-12	DATE DRAWN: 06-27-13
PARTY D.L.S. C.C. J.S.	REFERENCES G.L.O. PLAT	
WEATHER COOL	FILE ConocoPhillips Company	