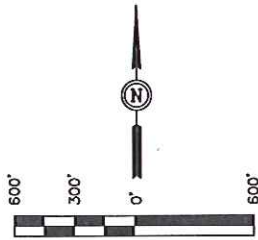


GREAT WESTERN OIL & GAS COMPANY

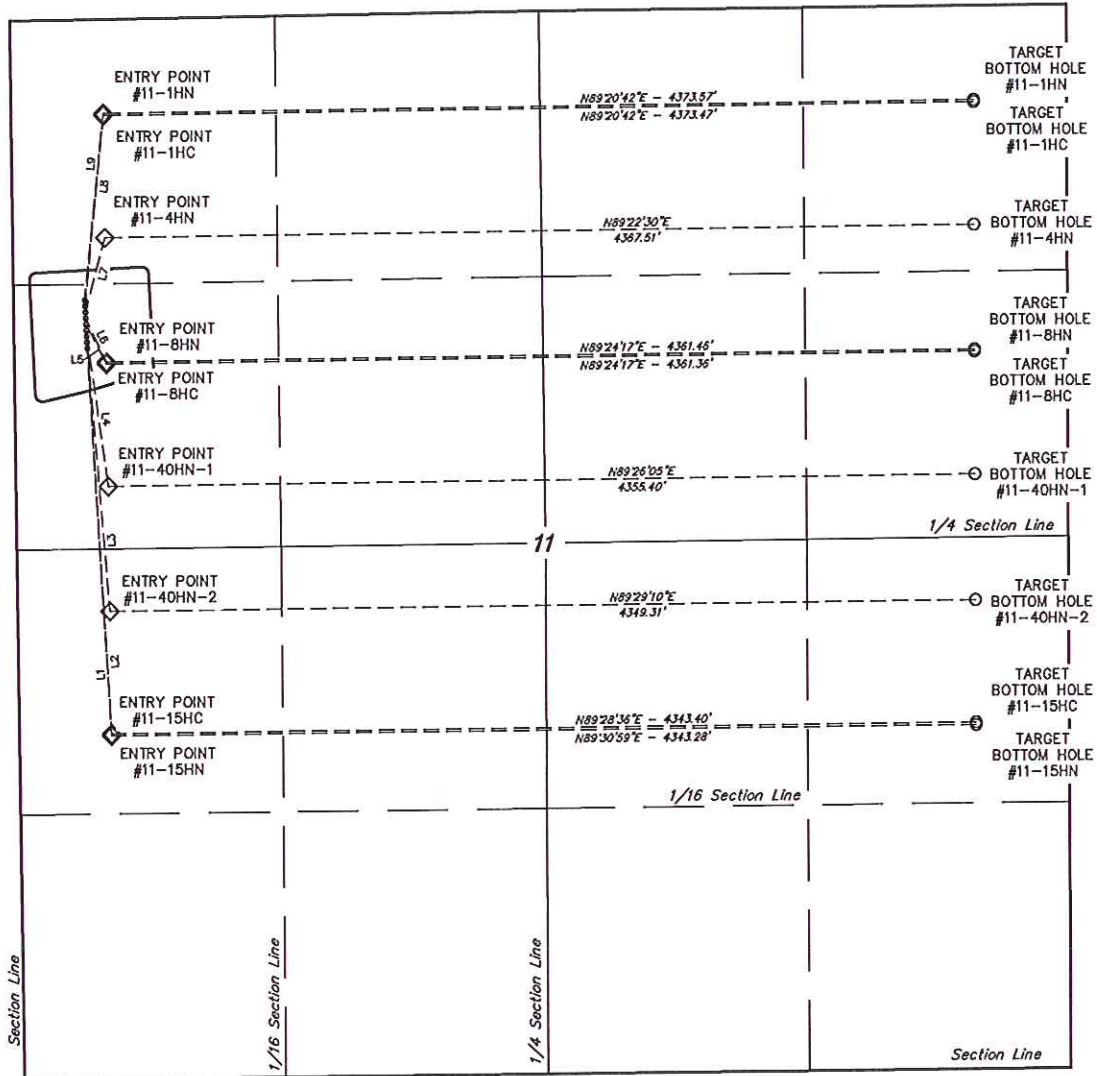
TARGET BOTTOM HOLE DRAWING FOR

POSTLE IC #11-15HN, #11-15HC, #11-40HN-2, #11-40HN-1,
#11-8HC, #11-8HN, #11-4HN, #11-1HC & #11-1HN
SECTION 11, T3N, R68W, 6th P.M.
SW 1/4 NW 1/4

FIGURE #6



SCALE
DATE: 05-07-13
DRAWN BY: J.W.
REVISED: 06-11-13



LINE TABLE

LINE	DIRECTION	LENGTH
L1	S03°27'32"E	1932.96'
L2	S03°27'57"E	1952.93'
L3	S04°42'25"E	1374.38'
L4	S07°52'30"E	784.29'
L5	S27°25'13"E	222.10'
L6	S25°31'14"E	240.54'
L7	N14°47'30"E	385.27'
L8	N05°35'15"E	956.66'
L9	N05°47'50"E	937.20'