

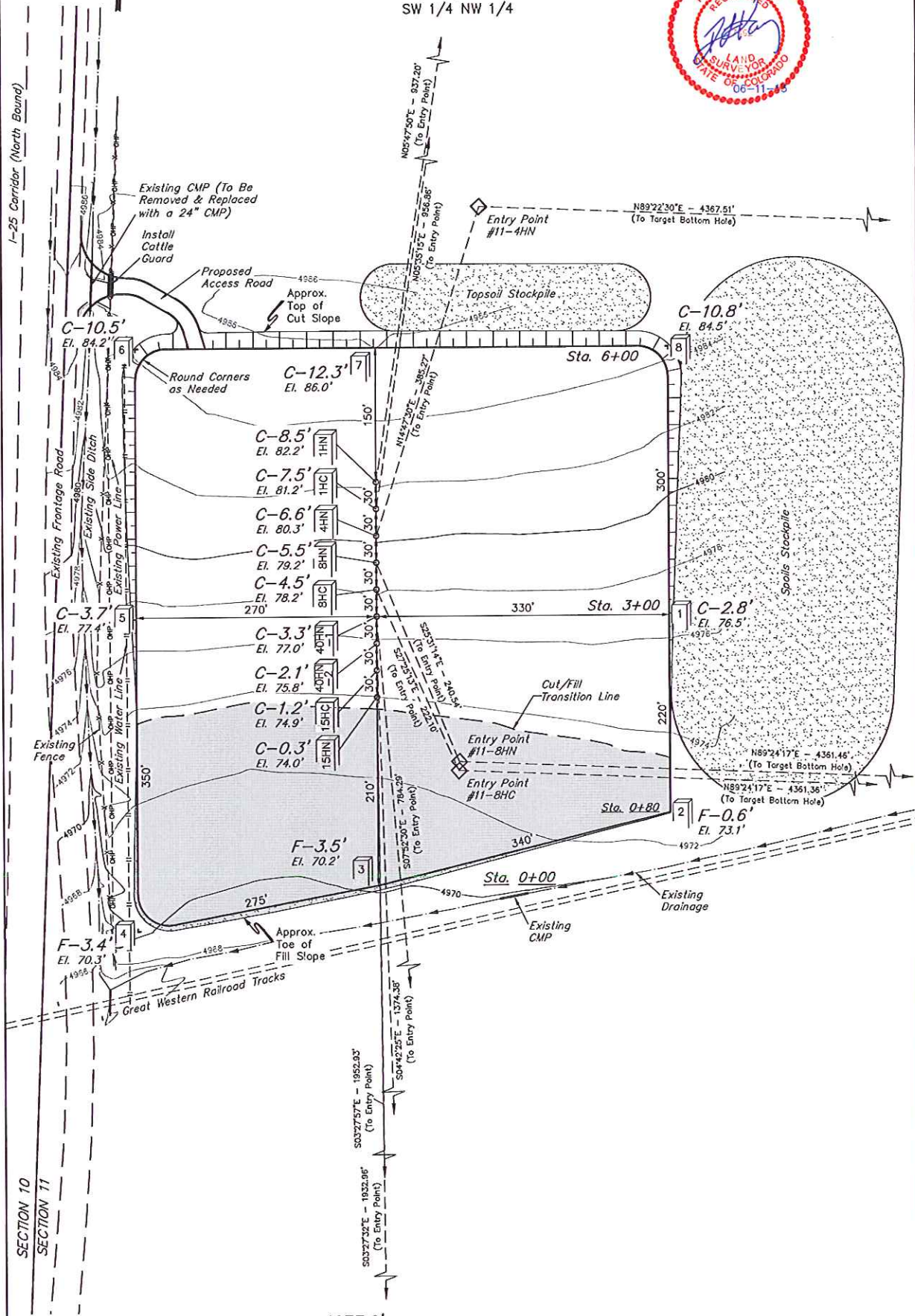
# GREAT WESTERN OIL & GAS COMPANY

## CONSTRUCTION LAYOUT FOR

POSTLE IC #11-15HN, #11-15HC, #11-40HN-2, #11-40HN-1,  
#11-8HC, #11-8HN, #11-4HN, #11-1HC & #11-1HN  
SECTION 11, T3N, R68W, 6th P.M.  
SW 1/4 NW 1/4

FIGURE #1

SCALE: 1" = 100'  
DATE: 05-07-13  
DRAWN BY: J.W.  
REVISED: 06-11-13



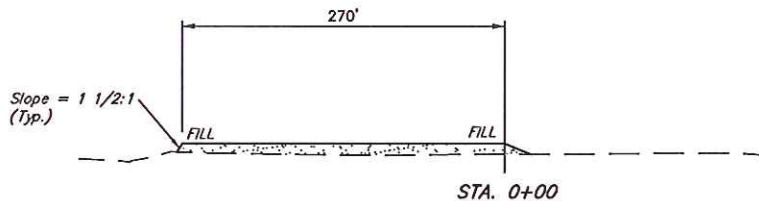
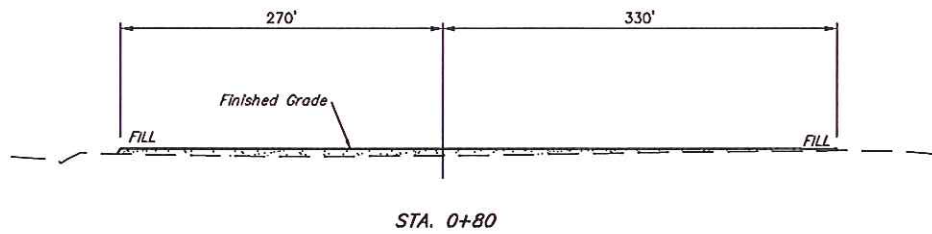
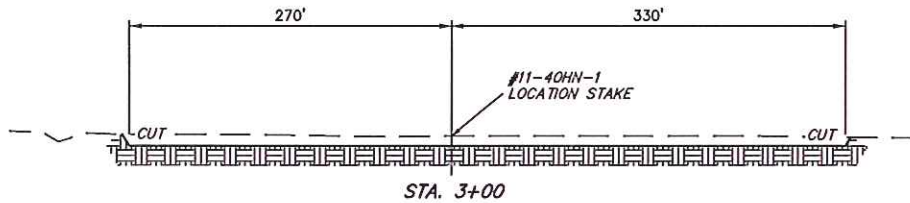
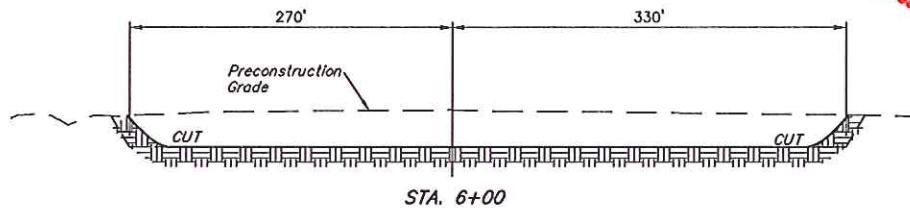
Elev. Ungraded Ground At #11-40HN-1 Loc. Stake = 4977.0'  
FINISHED GRADE ELEV. AT #11-40HN-1 LOC. STAKE = 4973.7'

UINTAH ENGINEERING & LAND SURVEYING  
85 So. 200 East • Vernal, Utah 84078 • (435) 783-1017

1" = 40'  
X-Section  
Scale  
1" = 100'  
DATE: 05-07-13  
DRAWN BY: J.W.

GREAT WESTERN OIL & GAS COMPANY  
CONSTRUCTION LAYOUT CROSS SECTIONS FOR  
POSTLE IC #11-15HN, #11-15HC, #11-40HN-2, ##11-40HN-1,  
#11-8HC, #11-8HN, #11-4HN, #11-1HC & #11-1HN  
SECTION 11, T3N, R68W, 6th P.M.  
SW 1/4 NW 1/4

FIGURE #2



NOTE:  
Topsoil should not be  
Stripped Below Finished  
Grade on Substructure Area.

\* NOTE:  
FILL QUANTITY INCLUDES  
5% FOR COMPACTION

APPROXIMATE YARDAGES

(6") Topsoil Stripping = 6,930 Cu. Yds.  
Remaining Location = 55,380 Cu. Yds.  
TOTAL CUT = 62,310 CU. YDS.  
FILL = 9,460 CU. YDS.

EXCESS MATERIAL = 52,850 Cu. Yds.  
Topsoil = 6,930 Cu. Yds.  
EXCESS UNBALANCE = 45,920 Cu. Yds.  
(After Interim Rehabilitation)

APPROXIMATE ACREAGE  
WELL SITE DISTURBANCE = ± 12.378 ACRES  
ACCESS ROAD DISTURBANCE = ± 0.112 ACRES  
TOTAL = ± 12.490 ACRES

UINTAH ENGINEERING & LAND SURVEYING  
85 So. 200 East • Vernal, Utah 84078 • (435) 789-1017