

Job # 13115 K-M #1-2

Inv # 2436

High Prairie Surveying of Kiowa, Colorado, in accordance with a request from **Mary F Combs, Grand Mesa Operating Company** has determined the location of **K-M #1-2** to be **2384' FNL and 2540' FWL**, (90° off Section lines) of **SECTION 2**, Township **2s**, Range **52w** of the 6th Principal Meridian, **Washington County**, Colorado.

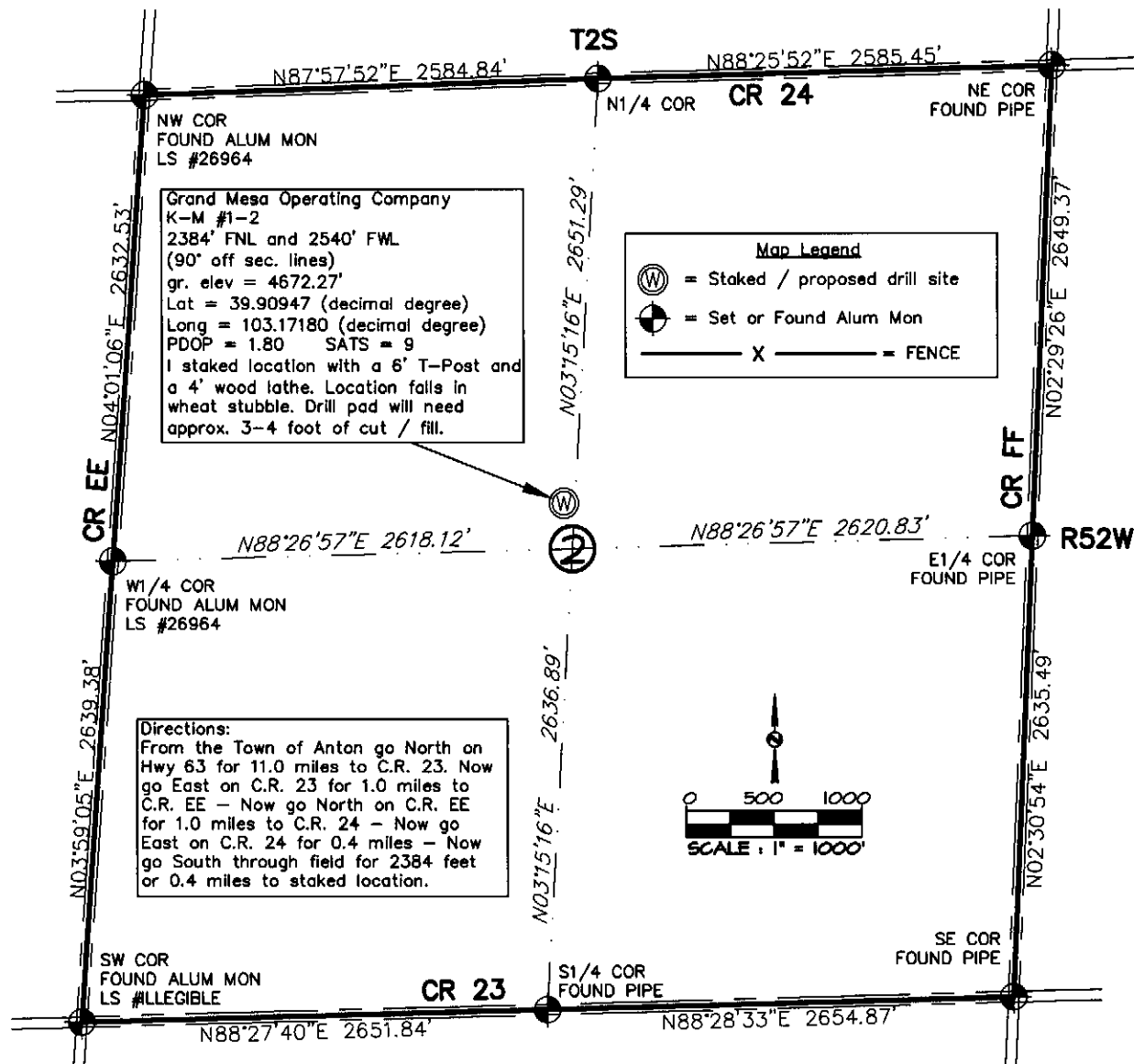
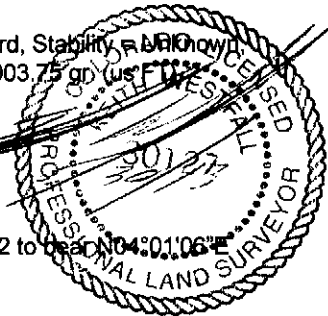
Date: Staked on 5/21/13 drawn on 5/30/13.

**Re:** Staked by Elijah Frane  
**Drawn:** Drawn by Dustin Cotter

**Basis of Elevation Spot:** USGS BM = ANTON, PID = KJ0478, H-Order = Second, V-Order = Third, Stability = **UNKNOWN**  
P-DOP = 1.8, SATS = 9, US NAD 83 CO-N, Lat. = 39.24567, Long. = W103.21294, Elevation = 4903.75 gr (us FT)

**Notes:** There are no apparent improvements within 400' of proposed well pad.  
The ground elevation at staked location = 4672.27' gr.  
This drawing does not represent a monumented survey or Land Survey Plat.

**Basis of Bearing:** Bearings were determined based on the West line of the NW 1/4 of SECTION 2 to be **N04°01'06"E** with all other bearings contained herein relative thereto.





Physical Address: 345 Comanche St.  
Mail to: Box 384, Kiowa, CO 80117  
Ph. 303-621-8672 - Fax 303-621-7749  
www.highprairiesurvey.com

Job # 13115 K-M #1-2

Inv # 2436

High Prairie Surveying of Kiowa, Colorado, in accordance with a request from **Mary F Combs, Grand Mesa Operating Company** has determined the location of **K-M #1-2** to be **2384' FNL and 2540' FWL**, (90° off Section lines) of **SECTION 2**, Township **2s**, Range **52w** of the 6th Principal Meridian, **Washington County, Colorado**.

Date: Staked on 5/21/13 drawn on 5/30/13.

Re: Staked by Elijah Frane  
Drawn: Drawn by Dustin Cotter

**Basis of Elevation Spot:** USGS BM = ANTON, PID = KJ0478, H-Order = Second, V-Order = Third, Stability = Unknown, P-DOP = 1.8, SATS = 9, US NAD 83 CO-N, Lat. = 39.24567, Long. = W103.21294, Elevation = 4908.75 gr. (us F74)

**Notes:** There are no apparent improvements within 400' of proposed well pad.  
The ground elevation at staked location = 4672.27' gr.  
This drawing does not represent a monumented survey or Land Survey Plat.

**Basis of Bearing:** Bearings were determined based on the West line of the NW 1/4 of SECTION 2, T2S, R52W with all other bearings contained herein relative thereto

