



PO Box 99 • Eastlake, CO 80614 • (303) 857-9999 • FAX (303) 450-9200 • www.oilpermits.com

April 4, 2013

Mr. Timothy J. Kelly
Colorado State Board of Land Commissioners
1127 Sherman Street, Suite 300
Denver, CO 80203

Re: Notice of Intent to Conduct Surface Operations
Bulldog 5 Well Pad (See Listing Attached)
Section 15, T8N – R90W
Moffat County, Colorado

Dear Mr. Kelly:

The Colorado Oil and Gas Conservation Commission (COGCC) has specific guidelines and procedures regarding surface activities. These rules stipulate an operator must give an affected surface owner notice in writing at least thirty (30) days prior to drilling an oil and gas well.

It is Axia Energy LLC's intention to begin operations to drill a single vertical well (Bulldog 10-24V-890). If the well is successful, 4 additional horizontal wells will be drilled from the same wellpad. Axia Energy LLC may drill the well thirty (30) days from this date or sooner if you approve to waive the thirty day notice requirement given below. It is your responsibility to notify the tenant farmer, if applicable, of this proposed operation.

Enclosed please find the following information:

- * A brochure describing surface owner rights and responsibility
- * The policies for a consultation with Axia Energy, LLC (COGCC Rule 306)
- * A copy of the survey, plats and diagrams for this project

We are currently working with Lane Osborn in your Craig, Colorado field office to schedule an onsite inspection with the surface tenant, Doug Camilletti, to discuss the proposed location of the well site, access roads, production facilities and reclamation.

If you have any questions concerning Axia Energy, LLC's plans, please contact me at 303-857-9999.

Sincerely,

PERMITCO INC.

Lisa Smith
Agent for Axia Energy, LLC

cc: Lane Osborn, Craig, CO

Well Name	Footages	Sec., Twn., Range
Bulldog 10-24V-890	60' FNL and 2058' FWL	Sec. 15, T8N – R90W
Bulldog 10-24H-890	73' FNL and 2015' FWL	Sec. 15, T8N – R90W
Bulldog 10-34H-890	66' FNL and 2038' FWL	Sec. 15, T8N – R90W
Bulldog 15-11H-890	88' FNL and 1967' FWL	Sec. 15, T8N – R90W
Bulldog 15-21H-890	80' FNL and 1991' FWL	Sec. 15, T8N – R90W

I/We hereby waive the notice requirement and hereby authorize Axia Energy, LLC to begin operations upon receipt of the drilling permits from the Colorado Oil and Gas Conservation Commission.

Colorado State Board of Land Commissioners

By: _____
Timothy J. Kelly, Minerals Unit Leasing Manager

Date: _____





Colorado Department of Natural Resources

OIL AND GAS WELL NOTIFICATION, CONSULTATION, AND RECLAMATION RULES

INFORMATION FOR OIL AND GAS OPERATORS, SURFACE OWNERS AND SURFACE TENANTS

DISCLAIMER: Surface owners are advised to obtain legal advice as may be appropriate to their particular circumstances. Landowners may or may not own the mineral rights underlying their property. In either case, surface owners and tenants may be faced with oil and gas mineral owners exercising their right to drill and produce wells on the property. This brochure is designed to describe the key points of the regulations for the reclamation of land disturbed by oil and gas activity. These regulations are enforced by the Colorado Oil and Gas Conservation Commission.

This brochure is a summary only, and is not to be used as a substitute for the complete rules and regulations.

revised 08/25/2006

STATEWIDE OIL AND GAS RECLAMATION RULES

The Colorado Oil and Gas Conservation Commission's (COGCC) statewide reclamation rules are designed to ensure that the surface of the land is restored as closely as possible to its pre-development condition. These rules respect the surface owner's need to request waivers of certain requirements under special circumstances.

The rules were developed with input from the oil and gas industry, the agricultural industry, the environmental community, and local governments. The COGCC also consulted with the Colorado Agricultural Commission as the rules were being written.

CROP LAND OR NON-CROP LAND? (100 Series Rules Definitions)

The requirements for notification by oil and gas operators to surface owners, as well as site construction and reclamation requirements, depend on whether or not the wellsite and access road are built on **Crop Land** or **Non-Crop Land**.

Crop Land--Lands which are cultivated, mechanically or manually harvested, or irrigated for vegetative agricultural production.

Non-Crop Land--Lands which are **not** defined as Crop Land, including range land.

SURFACE OWNER NOTIFICATION BY THE OIL AND GAS OPERATOR (Rule 305)

Before drilling, the oil and gas operator is required to:

- mail or deliver a notice to the **surface owner** and local government (to identify a surface owner for the purpose of giving the Rule 305 notice, the operator may rely on the records at the assessor for the county where the oil and gas operations will occur); and
- post a notice on the drillsite.

Notice is also required:

- if future operations are planned at an existing well site that cause significant surface disturbances, and
- before final reclamation of the wellsite and access roads.

The notice timing requirements depend on the type of oil and gas operations:

<u>OPERATION</u>	<u>CROP LAND</u>	<u>NON-CROP LAND</u>
Drilling	30 Days	30 Days
Additional Notice of Drilling on Irrigated Crop Land	14 Days	Does Not Apply
Future Well Operations	7 Days	7 Days
Final Reclamation	30 Days	30 Days

PURPOSE OF NOTICE

The purpose of the surface owner notice is to inform the surface owner about when and where the oil and gas operations are to take place so that the surface owner and tenant can make plans to coordinate their own land use with the oil and gas operations.

The COGCC rules require an oil and gas operator to ask the surface owner if he/she wants to be consulted about the timing of the operations and the locations of the wellsite and access road, as well as the final reclamation operations. In addition, the COGCC Onsite Inspection Policy requires an oil and gas operator to provide the surface owner with a copy of the Onsite Inspection Policy and an Onsite Inspection Request Form, along with the Rule 305 surface owner notification. (See "Onsite Inspections" on page 4.)

SURFACE TENANT NOTIFICATION (Rule 305.e.)

It is the surface owner's responsibility to notify the surface tenant about the proposed oil and gas operations.

SURFACE OWNER CONSULTATION (Rule 306)

The oil and gas operator is required to offer to consult with the surface owner about the locations of wellsites and access roads, and about final reclamation. ***The operator has no obligation to consult with a surface tenant unless the surface owner appoints a tenant for consultation.***

Local government representatives may also participate in the consultation about wellsite and access road locations if they desire. Local governments receive notice of wells to be drilled if they request to participate in the COGCC local governmental designee program.

ONSITE INSPECTIONS

On lands where the surface owner did not execute a lease or is not party to a surface use agreement, the surface owner may request the COGCC to conduct an onsite inspection with the surface owner and the oil and gas operator. Local government representatives may also participate if desired by the surface owner. The purpose of the inspection is to determine if technical or operational conditions should be attached to the permit to avoid potential unreasonable loss of crops or land, to address issues regarding health, safety, welfare or environmental impacts, and to ensure compliance with COGCC rules regarding advance notice and good faith consultation.

The onsite inspection will not address matters of surface owner compensation, diminution of property values, future property use, or other private party contractual issues between the operator and the surface owner. Please see the COGCC Onsite Inspection Policy for details about requesting an onsite inspection

SITE PREPARATION - FENCING (Rule 1002.a.)

On all lands: ***At the surface owner's request***, and where livestock is in the immediate area, the operator is required to fence the drilling mud reserve pit on wells that are being drilled, and the wellhead, pit, and production equipment on producing wells.

On Crop Land: ***At the surface owner's request***, the oil and gas operator is required to mark the boundaries of drillsites and access roads with berms, single strand fences, or other equivalent methods to minimize surface disturbance.

SOIL SEGREGATION WHILE EXCAVATING (Rule 1002.b.)

On Crop Land: While performing all excavations, the oil and gas operator is required to segregate all A (topsoil), B, and C soil horizons, and stockpile each of these soils separately. Deeper soil horizons are segregated to a depth of six feet.

On Non-Crop Land: The A (topsoil) horizon, or the top six inches of soil (whichever is deeper) is required to be segregated and stockpiled separately at all excavation

If soil horizons are too rocky or too thin to segregate, the topsoil is segregated as much as possible and stored separately. On crop land, other deeper soil layers are segregated as much as possible to a depth of three (3) feet.

MINIMIZING SURFACE DISTURBANCE DURING DRILLING OPERATIONS (Rule 1002.e.)

On all lands: Drilling locations are required to be designed and constructed in a manner that minimizes the total disturbed area. Steep slopes are to be avoided where possible, and deep cut and fills are to be constructed to the least possible slope. Existing access roads are to be used where possible, and oil and gas operators are encouraged to share access roads when developing a field. Operators are required to limit their travel to within original access road boundaries to reduce land damage.

RECLAMATION BEGINS SOON AFTER A WELL IS DRILLED AND COMPLETED (Rule 1003)

After a well is drilled, all areas which were disturbed by the drilling operations, and which are not needed for production operations, are to be reclaimed as close to their original condition as possible.

This "interim reclamation" is required to take place:

On Crop Land: No later than three (3) months after a well is completed.

On Non-Crop Land: No later than twelve (12) months after a well is completed.

On all lands: Interim reclamation includes:

- removing drilling waste materials and filling of pits and holes;
- removing compaction from the soil in areas no longer needed for oil and gas operations by cross-ripping the soil to a depth of eighteen (18) inches;
- closing drilling pits by drying out the pit and backfilling it by replacing the soil layers in their original positions;
- subsidence over the closed drilling pit is required to be corrected by the operator for two (2) years following pit closure by adding additional topsoil.

On Crop Land: Additional interim reclamation requirements include:

- guy line anchors for drilling and completion rigs are to be removed if requested;
- all bentonite drilling fluid is to be removed from the drilling pit before drying, and a minimum backfill cover of three (3) feet must be placed over any remaining contents in the pit;
- subsidence over any reclaimed area, including a closed drilling pit, is required to be corrected by the oil and gas operator by adding additional topsoil during the life of the well.

INTERIM RESTORATION AND REVEGETATION (Rule 1003)

On all lands: The oil and gas operator is required to replace all soils to their original positions and contour, and to adequately till the soil.

On Crop Land: The operator is required to prevent weeds and erosion, and to re-establish perennial crops that were present before drilling.

On Non-Crop Land: The operator is required to re-seed the disturbed area in the first favorable season. Re-seeding is done according to a surface owner agreement or in consultation with the local soil conservation district in the absence of an agreement. Re-seeding with a species consistent with the adjacent plant community is encouraged.

FINAL RECLAMATION (Rule 1004)

Final reclamation takes place after oil and gas wells are plugged and abandoned. All final reclamation work is required to be completed:

On Crop Land: No later than three (3) months after a well is plugged and abandoned.

On Non-Crop Land: No later than twelve (12) months after a well is plugged and abandoned.

On all lands: An oil and gas operator is required to

- remove all production equipment and debris;
- remove or treat any remaining production waste or contamination from spills or releases following COGCC rules;
- backfill all production pits by replacing the soils in their original positions;
- correct subsidence over closed production pit locations by adding additional topsoil;
- close access roads to plugged and abandoned wells and associated facilities;
- re-grade and re-contour the wellsite and access roads;
- perform compaction removal, restoration, and revegetation on well-sites and access roads to the same standards as those for interim reclamation on both Crop Land and Non-Crop Land;
- comply with all COGCC rules unless a surface owner waiver or Commission variance is obtained.

FLOWLINE INSTALLATION, MAINTENANCE, RECLAMATION, AND ABANDONMENT (Rule 1101)

On all lands:

- All oil and gas well flowlines are required to be buried deep enough to protect them from damage.
- Flowlines may be installed above ground if certain difficult conditions prevent burial or by agreement with the surface owner.

On Crop Land:

- Flowlines must be covered by a minimum of three (3) feet of soil unless prevented by certain difficult burial conditions, or the surface owner agrees to a shallower depth.
- When excavating trenches wider than twelve inches, the operator is required to segregate topsoil and backfill trenches to return the soils to their original positions and contour.
- Efforts are to be made to run flowlines parallel to crop irrigation rows on flood irrigated land.

MAINTENANCE (Rule 1102)

On all lands: Flowline trenches are to be maintained to correct subsidence and prevent erosion, with interim and final reclamation being

performed to the same standards as for wellsites and access roads. To prevent flowline leaks, flowlines are to be pressure tested upon installation, and then each year afterward

FLOWLINE ABANDONMENT (Rule 1103)

On all lands: When flowlines are abandoned:

- the lines are emptied of oil and gas;
- the lines are cut off below the ground surface;
- the lines are capped at the ends.

OIL AND GAS WELL AND TANK BATTERY SIGNS (Rule 210.b.)

Oil and gas operators are required to post permanent signs at wells and tank batteries that identify the operator and provide location and emergency notification information. Signs must be posted within sixty (60) days after the COGCC approves a change of operator.

COGCC COMPLAINT PROCESS (Rule 522)

If a surface owner or tenant has a complaint about an oil and gas operation, the COGCC encourages them to first contact the operator to see if a solution can be found that works for both parties. If no satisfactory solution can be found, a surface owner or tenant may file a complaint, preferably in writing on a COGCC Complaint Report Form (Form 18), with the COGCC. The COGCC staff includes field inspectors, engineers and environmental specialists who are available to investigate complaints and take enforcement action if rule violations are found. If the COGCC enforcement process does not adequately address a surface owner or tenant complaint, an application can be filed for a Commission hearing.

***COGCC HEARING APPLICATION PROCESS
(Rules 503 and 522.c.)***

Surface owners and tenants may file an application for hearing before the Commission for the following purposes:

- to seek a variance from the COGCC Rules if the Director does not grant a variance request administratively
- to seek an Order Finding Violation if they object to the COGCC staff's formal resolution of their complaint

Applications for Commission hearings are required to include a written description of the requested relief and the factual grounds for the relief. All hearing applications are to be filed at least fifty (50) days in advance of the desired hearing date. No application fee is required. Contact the COGCC Hearings Manager for further information on hearing application procedures.

The COGCC has offices located throughout the state:

Main Office: 1120 Lincoln Street, Suite 801
Denver, CO 80203
(303) 894-2100 - phone
(303) 894-2109 - fax
Toll-free Complaint Line to Denver:
(888) 235-1101

Greeley: (970) 506-9834 – phone
Sterling: (970) 522-6747 – phone
Trinidad: (719) 846-4715 – phone
Parachute: (970) 285-5661 – phone
Parachute: (970) 285-9000 – phone
Durango: (970) 259-4587 – phone
Broomfield: (303) 469-1902 – phone
De Beque: (970) 283-8635 – phone

Visit the COGCC Website at:

www.oil-gas.state.co.us

Information available on the website includes:

- COGCC Rules and Regulations and the Oil and Gas Conservation Act
- COGCC Onsite Inspection Policy
- COGCC Staff Contact Information
- A listing of Local Governmental Designees
- A listing of all pending and approved Applications-to-Drill
- A calendar of COGCC hearings
- The COGCC Information System including a Geographic Information System (GIS) Map interface
- Typical Questions from the Public About Oil and Gas Development



COLORADO OIL AND GAS CONSERVATION COMMISSION

RULE 306. CONSULTATION.

In locating roads, production facilities and well sites, and in preparation for reclamation and final abandonment, the operator shall use its best efforts to consult in good faith with the affected surface owner, or the surface owner's appointed tenant as provided for in Rule 305. Consultation with local governmental designees is addressed in Rule 306.a. (3) below. The following shall apply to each such consultation:

a. **Drilling consultation.** The good faith effort to consult shall occur at a time mutually agreed to by the parties prior to the commencement of operations with heavy equipment upon the lands of the surface owner. The operator shall confirm that the surface owner consultation requirements of this Rule 306. have been completed or waived before the Director approves an Application for Permit-to-Drill, Form 2.

(1) **Information provided by operator.** When consulting with the surface owner or appointed tenant, the operator shall furnish a description or diagram of the proposed drilling location; dimensions of the well site; and, if known, the location of associated production or injection facilities, pipelines, roads and any other areas to be used for oil and gas operations (if not previously furnished to such surface owner or if different from what was previously furnished).

(2) **Good faith consultation.** Such good faith consultation shall allow the surface owner or appointed tenant the opportunity to provide comments to the operator regarding preferences for the timing of oil and gas operations and preferred locations for wells and associated facilities.

(3) **Local government consultation.** Local governments which have appointed a local governmental designee and have indicated to the Director a desire for onsite consultation shall be given an opportunity to engage in such consultation concerning the location of roads, production facilities and well sites prior to the commencing of operations with heavy equipment.

b. **Final reclamation consultation.** In preparing for final reclamation and plugging and abandonment, the operator shall use its best efforts to consult in good faith with the affected surface owner (or the tenant when the surface owner has requested that such consultation be made with the tenant). Such good faith consultation shall allow the surface owner (or appointed tenant) the opportunity to provide comments concerning preference for timing of such operations and all aspects of final reclamation.

c. **Tenants.** Operators shall have no obligation to consult with tenant farmers, lessees, or any other party ("tenant") that may own or have an interest in any crops or surface improvements that could be affected by the proposed operation unless the surface owner appoints such tenant for such purposes. Nothing shall prevent the surface owner from including the tenant during the consultation. 300-7 as of May 30, 2008

d. **Waiver.** The requirement to consult with the surface owner under this Rule 306 may be waived by the affected surface owner or the surface owner's appointed tenant at any time.

AXIA ENERGY
BULLDOG #10-24V-890, #10-34H-890, #10-24H-890,
#15-21H-890 & #15-11H-890
LOCATED IN MOFFAT COUNTY, COLORADO
SECTION 15, T8N, R90W, 6th P.M.



PHOTO: VIEW OF LOCATION STAKES

CAMERA ANGLE: SOUTHERLY



PHOTO: VIEW FROM BEGINNING OF PROPOSED ACCESS

CAMERA ANGLE: SOUTHEASTERLY



- Since 1964 -

U&LS Uintah Engineering & Land Surveying
85 South 200 East Vernal, Utah 84078
(435) 789-1017 * FAX (435) 789-1813

LOCATION PHOTOS

02 **12** **13**
MONTH DAY YEAR

TAKEN BY: G.M.

DRAWN BY: C.L.

REV: 03-29-13 J.L.H.

PHOTO
P1

AXIA ENERGY
BULLDOG #10-24V-890, #10-34H-890, #10-24H-890,
#15-21H-890 & #15-11H-890
LOCATED IN MOFFAT COUNTY, COLORADO
SECTION 15, T8N, R90W, 6th P.M.



PHOTO: VIEW OF LOCATION STAKES

CAMERA ANGLE: NORTHERLY



PHOTO: VIEW OF LOCATION STAKES

CAMERA ANGLE: EASTERLY



- Since 1964 -



Uintah Engineering & Land Surveying
85 South 200 East Vernal, Utah 84078
(435) 789-1017 * FAX (435) 789-1813

LOCATION PHOTOS

02 **12** **13**
MONTH DAY YEAR

TAKEN BY: G.M.

DRAWN BY: C.L.

REV: 03-29-13 J.L.H.

PHOTO
P2

AXIA ENERGY
BULLDOG #10-24V-890, #10-34H-890, #10-24H-890,
#15-21H-890 & #15-11H-890
LOCATED IN MOFFAT COUNTY, COLORADO
SECTION 15, T8N, R90W, 6th P.M.



PHOTO: VIEW OF LOCATION STAKES

CAMERA ANGLE: SOUTHERLY



PHOTO: VIEW OF LOCATION STAKES

CAMERA ANGLE: WESTERLY



- Since 1964 -

UELS

Uintah Engineering & Land Surveying
85 South 200 East Vernal, Utah 84078
(435) 789-1017 * FAX (435) 789-1813

LOCATION PHOTOS

02 **12** **13**
MONTH DAY YEAR

TAKEN BY: G.M.

DRAWN BY: C.L.

REV: 03-29-13 J.L.H.

PHOTO
P3

AXIA ENERGY
BULLDOG #10-24V-890, #10-34H-890, #10-24H-890,
#15-21H-890 & #15-11H-890
LOCATED IN MOFFAT COUNTY, COLORADO
SECTION 15, T8N, R90W, 6th P.M.



PHOTO: VIEW OF REFERENCE AREA

CAMERA ANGLE: NORTHERLY



PHOTO: VIEW OF REFERENCE AREA

CAMERA ANGLE: EASTERLY



- Since 1964 -

U
ELS Uintah Engineering & Land Surveying
85 South 200 East Vernal, Utah 84078
(435) 789-1017 * FAX (435) 789-1813

**REFERENCE AREA
PHOTOS**

02 **12** **13**
MONTH DAY YEAR

TAKEN BY: G.M. DRAWN BY: C.L. REV: 03-29-13 J.L.H.

**PHOTO
REF 1**

AXIA ENERGY
BULLDOG #10-24V-890, #10-34H-890, #10-24H-890,
#15-21H-890 & #15-11H-890
LOCATED IN MOFFAT COUNTY, COLORADO
SECTION 15, T8N, R90W, 6th P.M.



PHOTO: VIEW OF REFERENCE AREA

CAMERA ANGLE: SOUTHERLY



PHOTO: VIEW OF REFERENCE AREA

CAMERA ANGLE: WESTERLY



- Since 1964 -

**U
E
L
S**

Uintah Engineering & Land Surveying
85 South 200 East Vernal, Utah 84078
(435) 789-1017 * FAX (435) 789-1813

**REFERENCE AREA
PHOTOS**

TAKEN BY: G.M.

DRAWN BY: C.L.

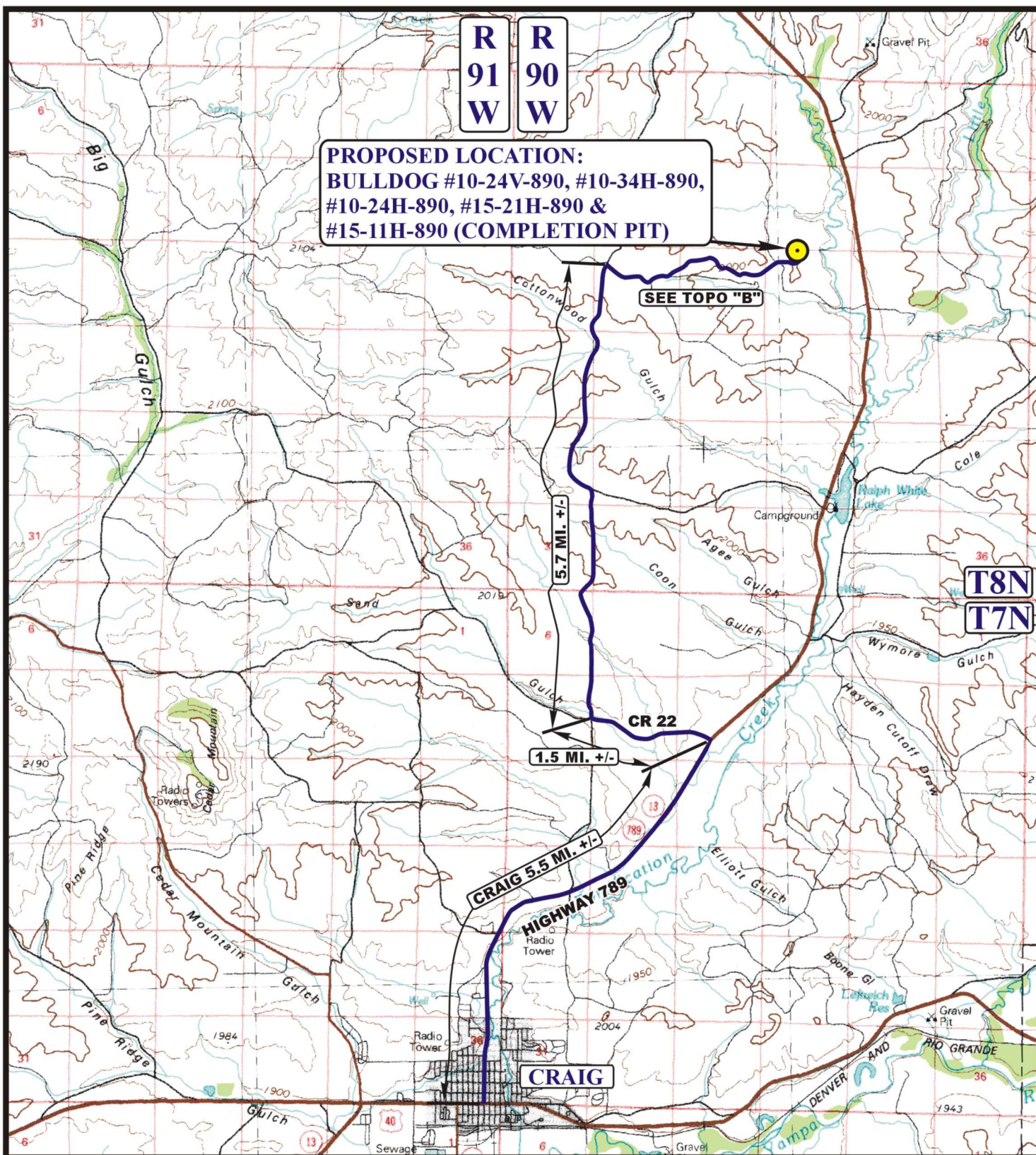
02
MONTH

12
DAY

13
YEAR

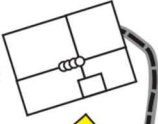
**PHOTO
REF2**

REV: 03-29-13 J.L.H.



T8N

BULLDOG
#10-24V-890,
#10-34H-890,
#10-24H-890,
#15-21H-890 &
#15-11H-890



**TRUCK TURN
AROUND AREA 547' +/-**

DETAIL "A"

**PROPOSED LOCATION:
BULLDOG #10-24V-890, #10-34H-890,
#10-24H-890, #15-21H-890 &
#15-11H-890 (COMPLETION PIT)**

BULLDOG
#10-24V-890,
#10-34H-890,
#10-24H-890,
#15-21H-890 &
#15-11H-890

SEE DETAIL "A"

EXISTING FENCE

EXISTING FENCE

**EXISTING 2-TRACK
NEEDS UPGRADED**

**PROPOSED ACCESS FOR THE
BULLDOG #10-34H-890 13,623' +/-**

**SMITH RANCHO
LAND & LIVESTOCK
LLC**

**STATE OF
COLORADO**

**R
90
W**

- 1** INSTALL CATTLE
GUARD & 12" GATE
2 INSTALL CATTLE GUARD

LEGEND:

- EXISTING ROAD
--- PROPOSED ACCESS ROAD
--- EXISTING 2-TRACK NEEDS UPGRADED
* * * * * EXISTING FENCE

AXIA ENERGY

**BULLDOG #10-24V-890, #10-34H-890, #10-24H-890,
#15-21H-890 & #15-11H-890 (COMPLETION PIT)
SECTION 15, T8N, R90W, 6th P.M.
LOT 2**



Uintah Engineering & Land Surveying
85 South 200 East Vernal, Utah 84078
(435) 789-1017 * FAX (435) 789-1813

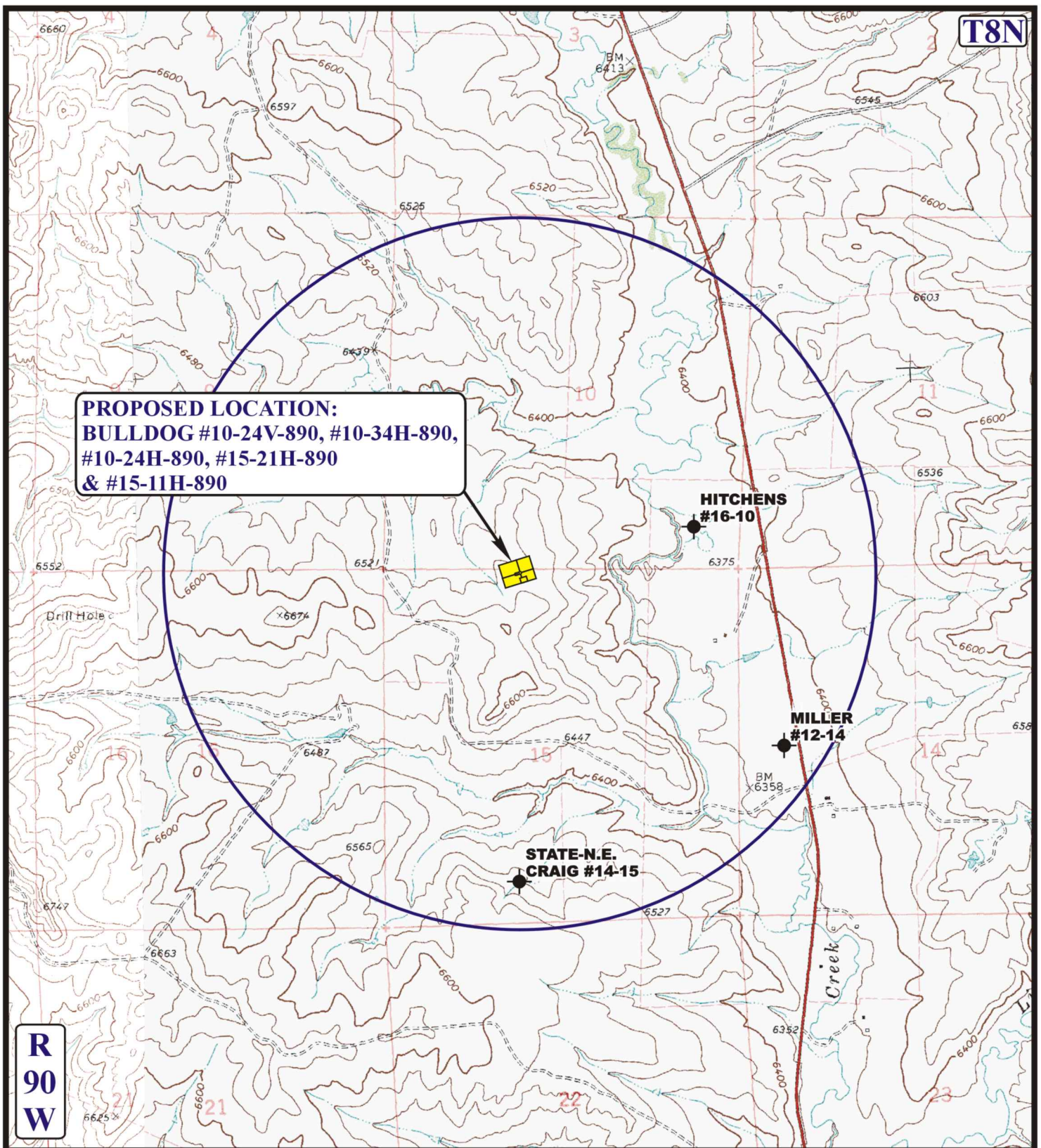


**ACCESS ROAD
MAP**

02 12 13
MONTH DAY YEAR

SCALE: 1" = 2000' DRAWN BY: C.L. REV: 03-29-13 J.L.H.

**B
TOPO**



LEGEND:

- Ø DISPOSAL WELLS
- PRODUCING WELLS
- SHUT IN WELLS
- ABANDONED WELLS
- TEMPORARILY ABANDONED



AXIA ENERGY

BULLDOG #10-24V-890, #10-34H-890, #10-24H-890,
#15-21H-890 & #15-11H-890
SECTION 15, T8N, R90W, 6th P.M.
LOT 2



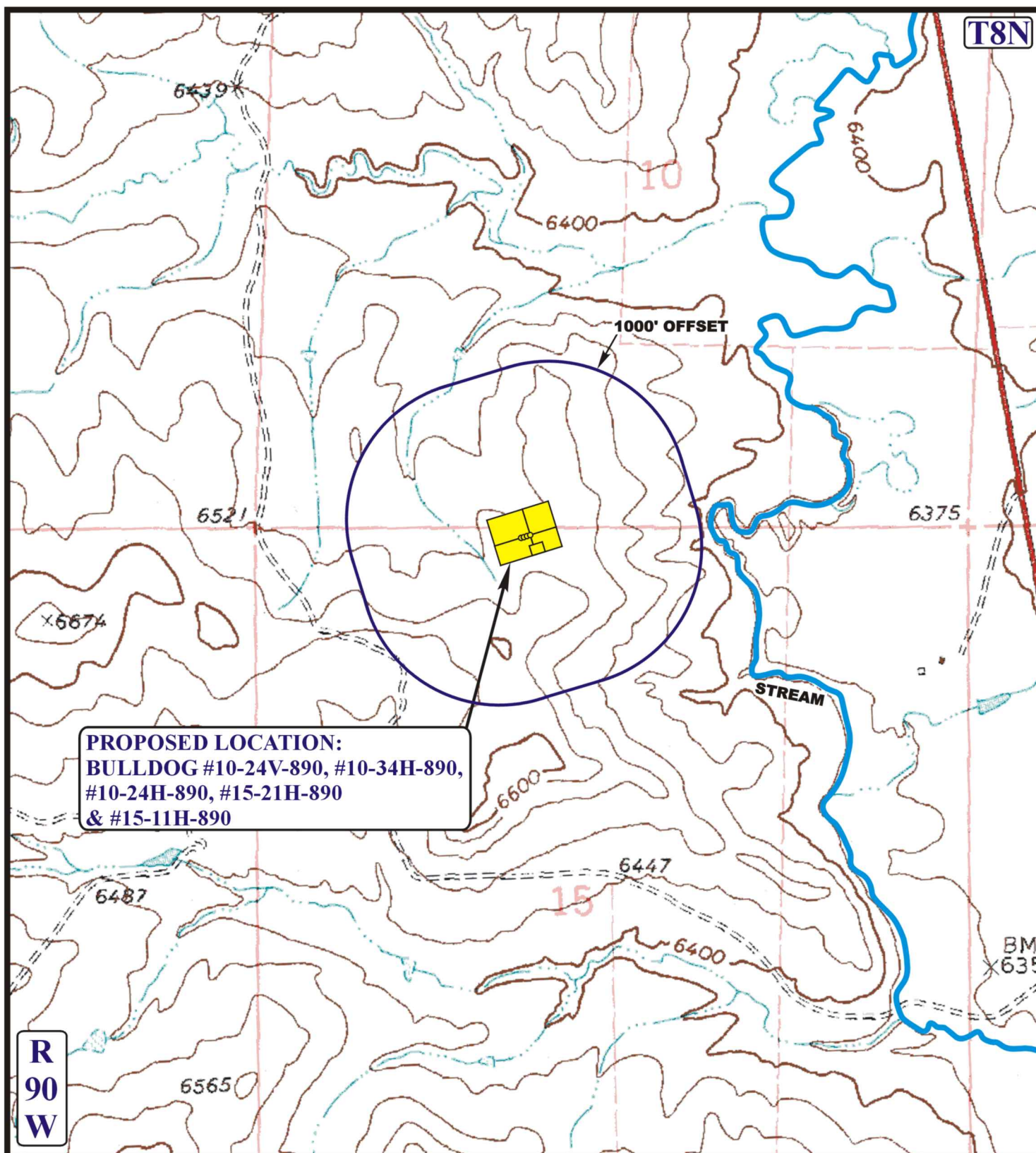
Uintah Engineering & Land Surveying
 85 South 200 East Vernal, Utah 84078
 (435) 789-1017 * FAX (435) 789-1813

TOPOGRAPHIC
MAP

02 **12** **13**
 MONTH DAY YEAR

SCALE: 1" = 2000' DRAWN BY: C.L. REV: 03-29-13 J.L.H.





LEGEND:

- EXISTING DRAINAGE
- 1000' OFFSET BOUNDARY
- WATER WELL

AXIA ENERGY

BULLDOG #10-24V-890, #10-34H-890, #10-24H-890,
#15-21H-890 & #15-11H-890
SECTION 15, T8N, R90W, 6th P.M.
LOT 2



Uintah Engineering & Land Surveying
 85 South 200 East Vernal, Utah 84078
 (435) 789-1017 * FAX (435) 789-1813



HYDROLOGY MAP

SCALE: 1" = 1000' DRAWN BY: C.L. REV: 03-29-13 J.L.H.

02 **12** **13**
 MONTH DAY YEAR



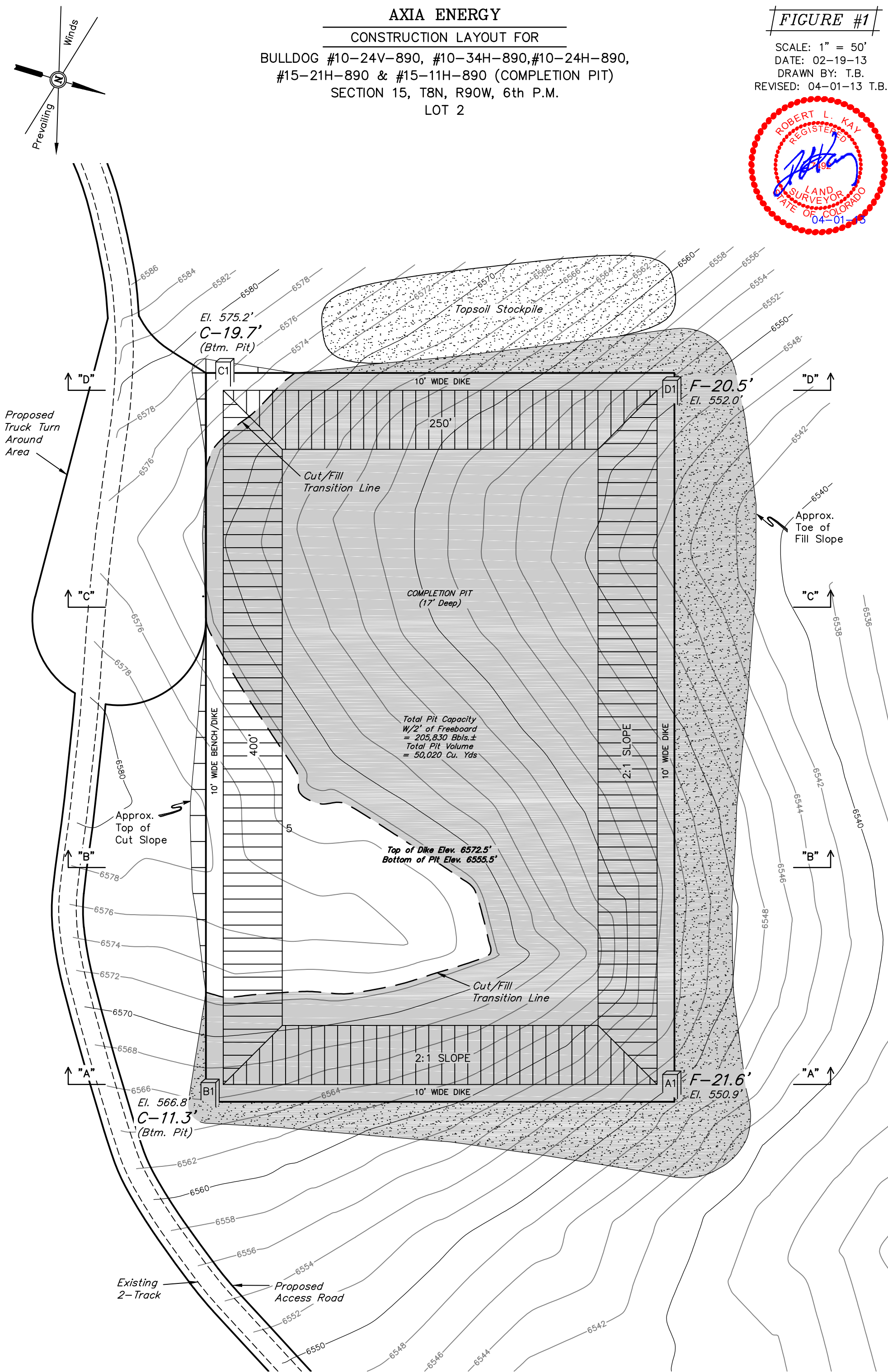
AXIA ENERGY

CONSTRUCTION LAYOUT FOR

BULLDOG #10-24V-890, #10-34H-890, #10-24H-890,
#15-21H-890 & #15-11H-890 (COMPLETION PIT)
SECTION 15, T8N, R90W, 6th P.M.
LOT 2

FIGURE #1

SCALE: 1" = 50'
DATE: 02-19-13
DRAWN BY: T.B.
REVISED: 04-01-13 T.B.



FINISHED GRADE ELEV. AT TOP OF DIKE = 6572.5'

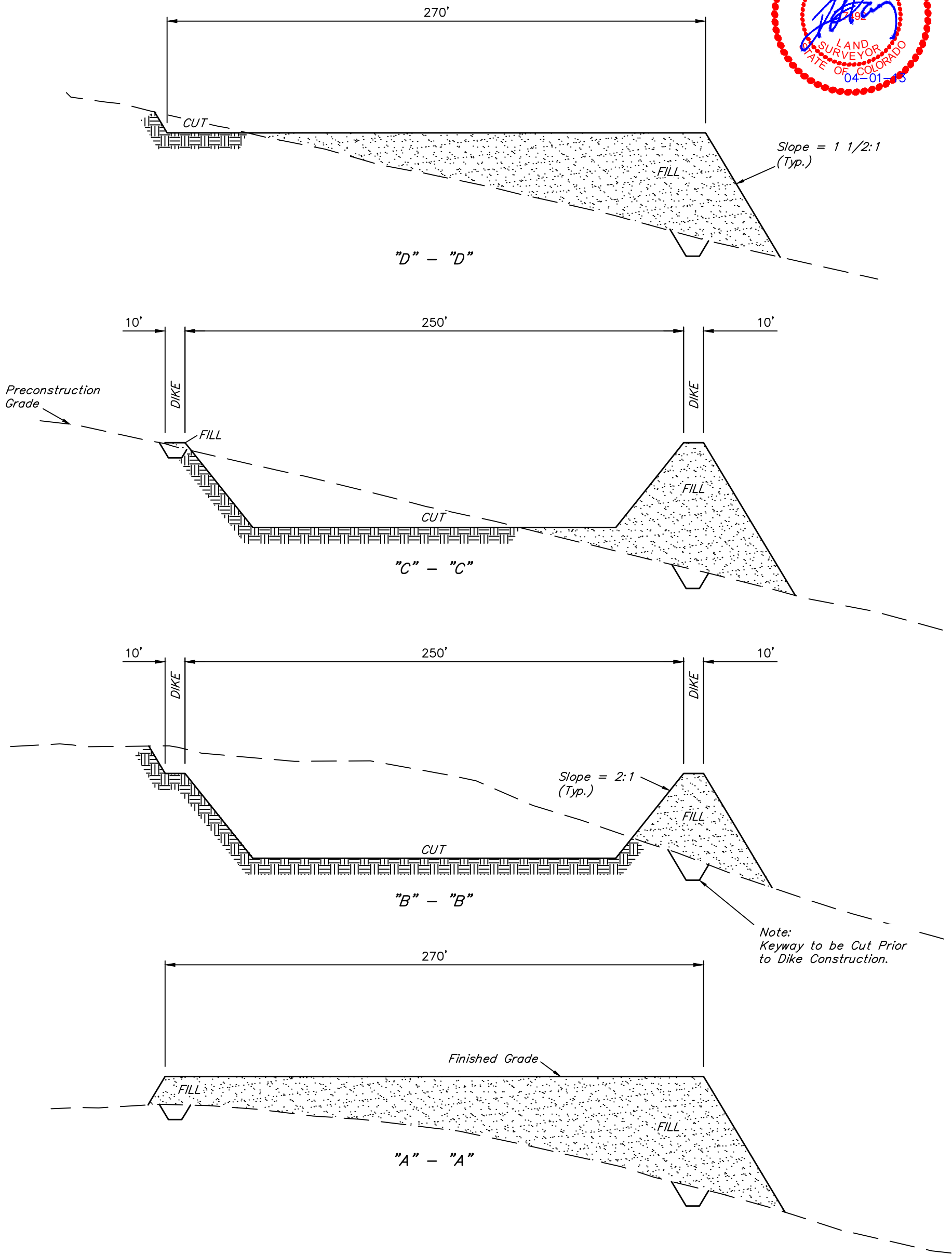
UINTAH ENGINEERING & LAND SURVEYING
85 So. 200 East * Vernal, Utah 84078 * (435) 789-1017

AXIA ENERGY

FIGURE #2

CONSTRUCTION LAYOUT CROSS SECTIONS FOR
BULLDOG #10-24V-890, #10-34H-890, #10-24H-890,
#15-21H-890 & #15-11H-890 (COMPLETION PIT)
SECTION 15, T8N, R90W, 6th P.M.
LOT 2

1" = 20'
X-Section
Scale
1" = 50'
DATE: 02-19-13
DRAWN BY: T.B.
REVISED: 04-01-13 T.B.



NOTE:
Topsoil should not be
Stripped Below Finished
Grade on Substructure Area.

* NOTE:
FILL QUANTITY INCLUDES
5% FOR COMPACTION

COMPLETION PIT APPROXIMATE YARDAGES

(6") Topsoil Stripping = 2,700 Cu. Yds.
Remaining Location = 25,790 Cu. Yds.
TOTAL CUT = 28,490 CU. YDS.
FILL = 25,790 CU. YDS.

EXCESS MATERIAL = 2,700 Cu. Yds.
Topsoil = 2,700 Cu. Yds.
EXCESS UNBALANCE = 0 Cu. Yds.
(After Interim Rehabilitation)

COMPLETION PIT APPROXIMATE ACREAGES
COMPLETION PIT DISTURBANCE = ± 3.515 ACRES
PIT ACCESS ROAD DISTURBANCE = ± 0.388 ACRES
TOTAL = ± 3.903 ACRES

UINTAH ENGINEERING & LAND SURVEYING
85 So. 200 East * Vernal, Utah 84078 * (435) 789-1017

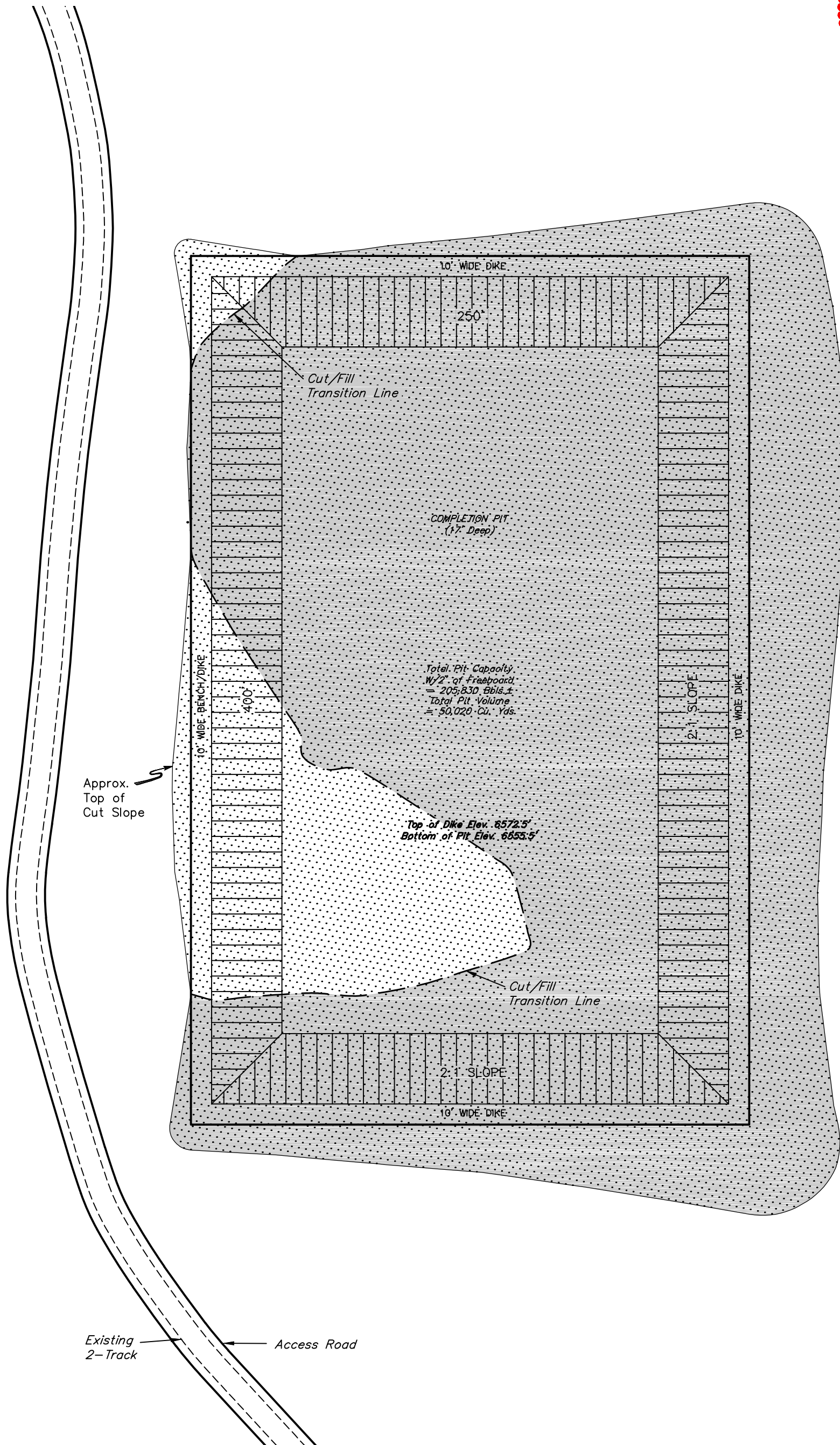
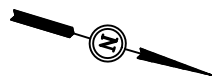
AXIA ENERGY

RECLAMATION DIAGRAM FOR

BULLDOG #10-24V-890, #10-34H-890, #10-24H-890,
#15-21H-890 & #15-11H-890 (COMPLETION PIT)
SECTION 15, T8N, R90W, 6th P.M.
LOT 2

FIGURE #3

SCALE: 1" = 50'
DATE: 02-19-13
DRAWN BY: T.B.
REVISED: 04-01-13 T.B.



RECLAIMED AREA

APPROXIMATE ACREAGES
RECLAIMED = ± 3.515 ACRES

UINTAH ENGINEERING & LAND SURVEYING
85 So. 200 East * Vernal, Utah 84078 * (435) 789-1017

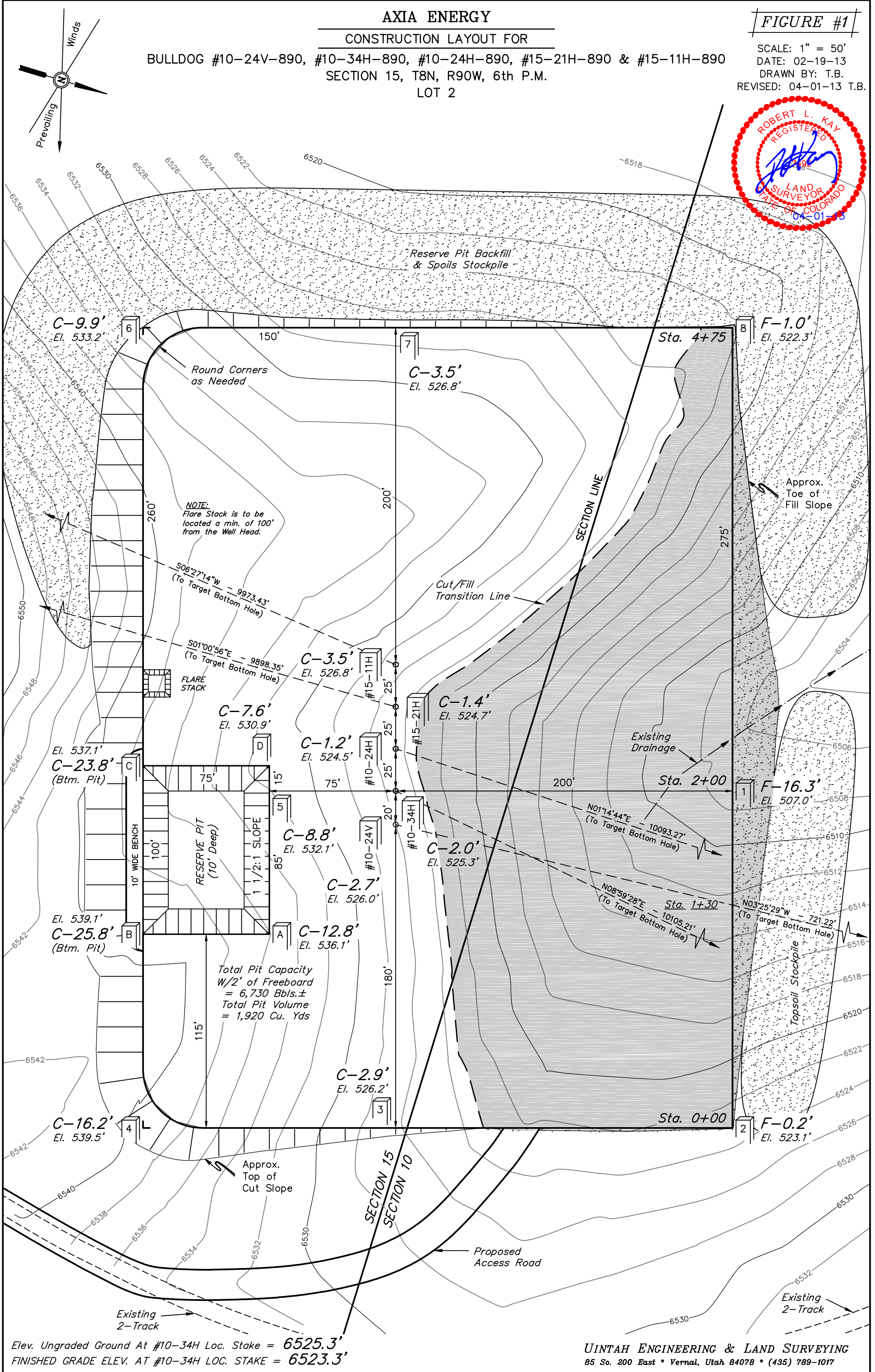
AXIA ENERGY

CONSTRUCTION LAYOUT FOR

BULLDOG #10-24V-890, #10-34H-890, #10-24H-890, #15-21H-890 & #15-11H-890
SECTION 15, T8N, R90W, 6th P.M.
LOT 2

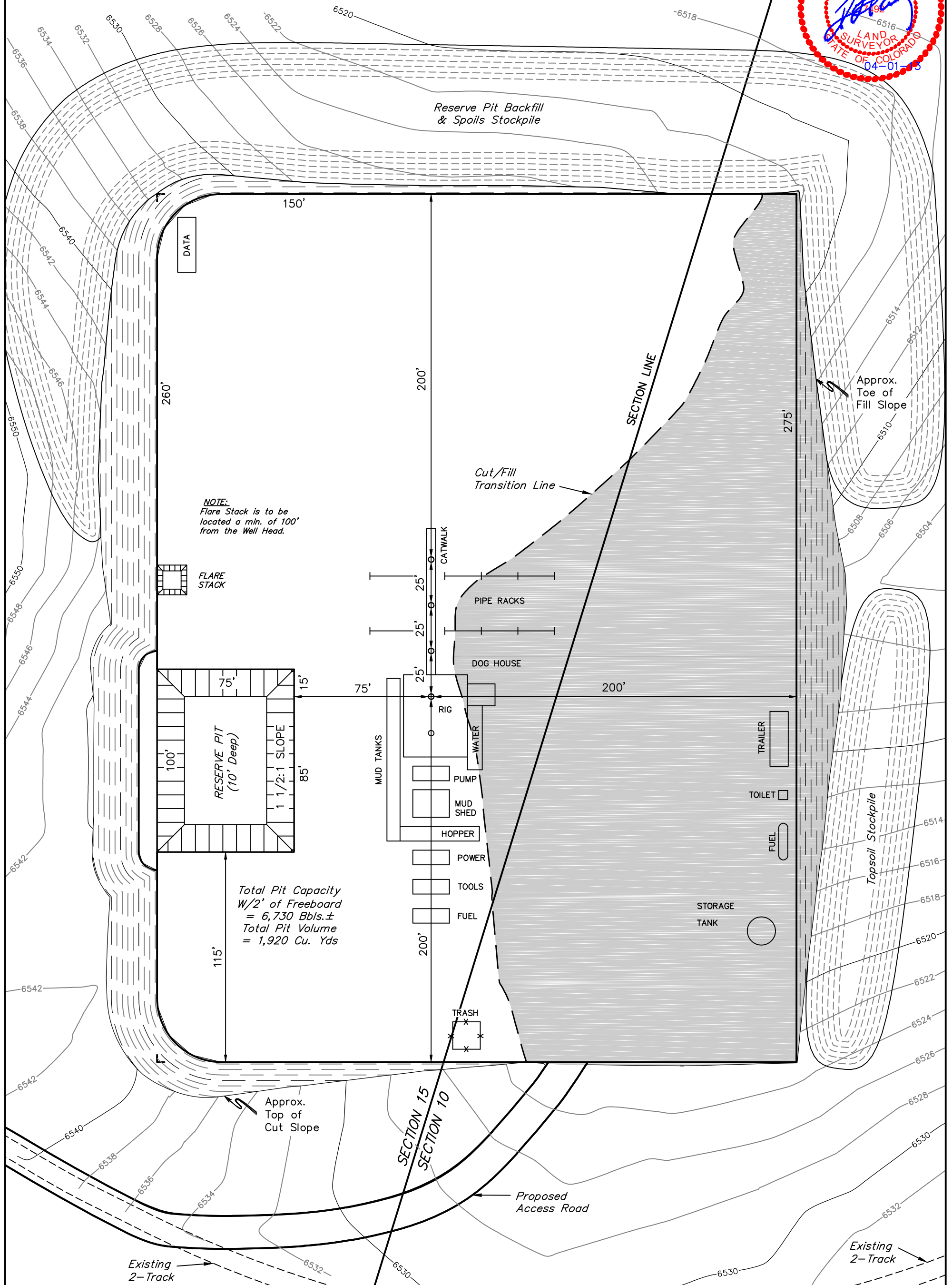
FIGURE #1

SCALE: 1" = 50'
DATE: 02-19-13
DRAWN BY: T.B.
REVISED: 04-01-13 T.B.



TYPICAL RIG LAYOUT FOR

FIGURE #3



AXIA ENERGY

CONSTRUCTION LAYOUT CROSS SECTIONS FOR

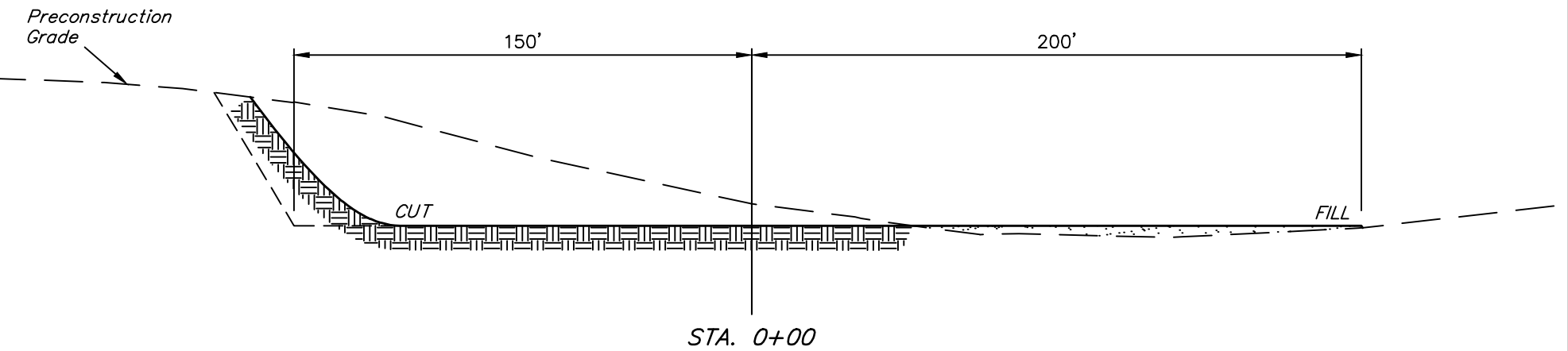
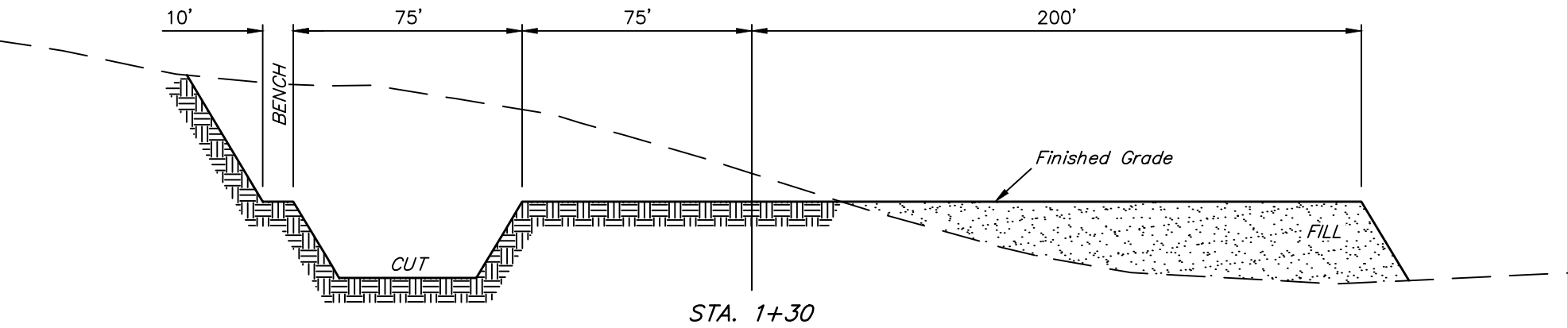
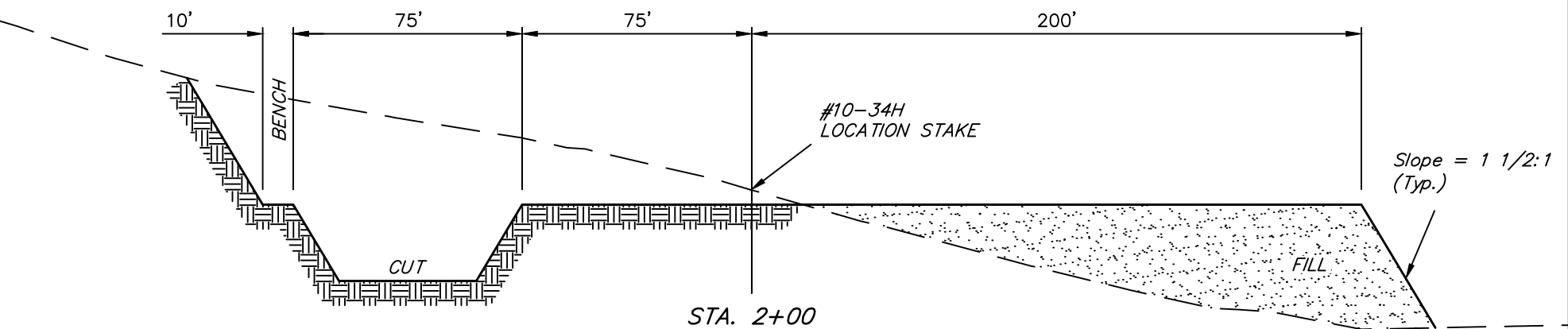
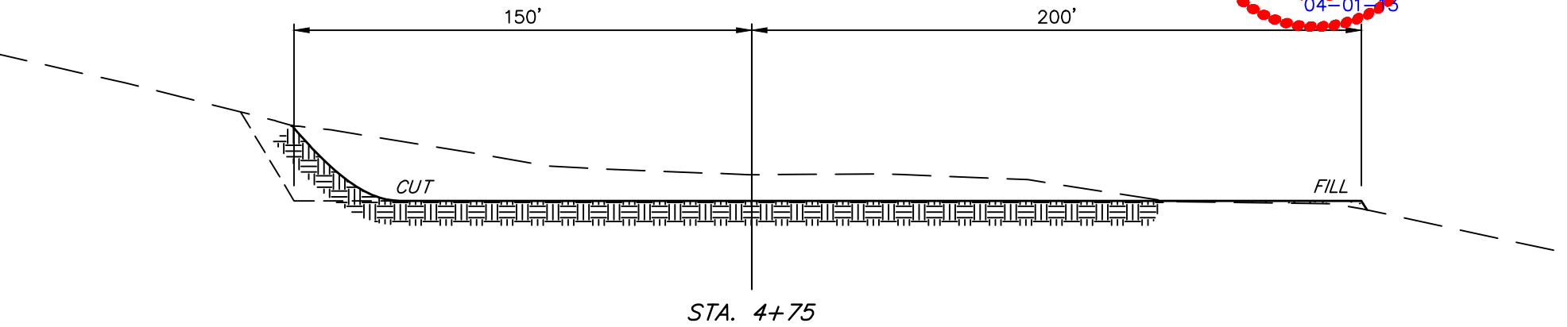
BULLDOG #10-24V-890, #10-34H-890, #10-24H-890, #15-21H-890 & #15-11H-890
SECTION 15, T8N, R90W, 6th P.M.
LOT 2

FIGURE #2



1" = 20'
X-Section Scale
1" = 50'

DATE: 02-19-13
DRAWN BY: T.B.
REVISED: 04-01-13 T.B.



NOTE:
Topsoil should not be
Stripped Below Finished
Grade on Substructure Area.

* NOTE:
FILL QUANTITY INCLUDES
5% FOR COMPACTION

WELL PAD APPROXIMATE YARDAGES

(6") Topsoil Stripping = 3,550 Cu. Yds.
Remaining Location = 37,180 Cu. Yds.
TOTAL CUT = 40,730 CU. YDS.
FILL = 17,520 CU. YDS.

EXCESS MATERIAL = 23,210 Cu. Yds.
Topsoil & Pit Backfill = 4,510 Cu. Yds.
(1/2 Pit Vol.)
EXCESS UNBALANCE = 18,700 Cu. Yds.
(After Interim Rehabilitation)

WELL PAD APPROXIMATE ACREAGES

WELL SITE DISTURBANCE = ± 5.721 ACRES
ACCESS ROAD DISTURBANCE = ± 10.140 ACRES
TOTAL = ± 15.861 ACRES
UINTAH ENGINEERING & LAND SURVEYING
85 So. 200 East * Vernal, Utah 84078 * (435) 789-1017

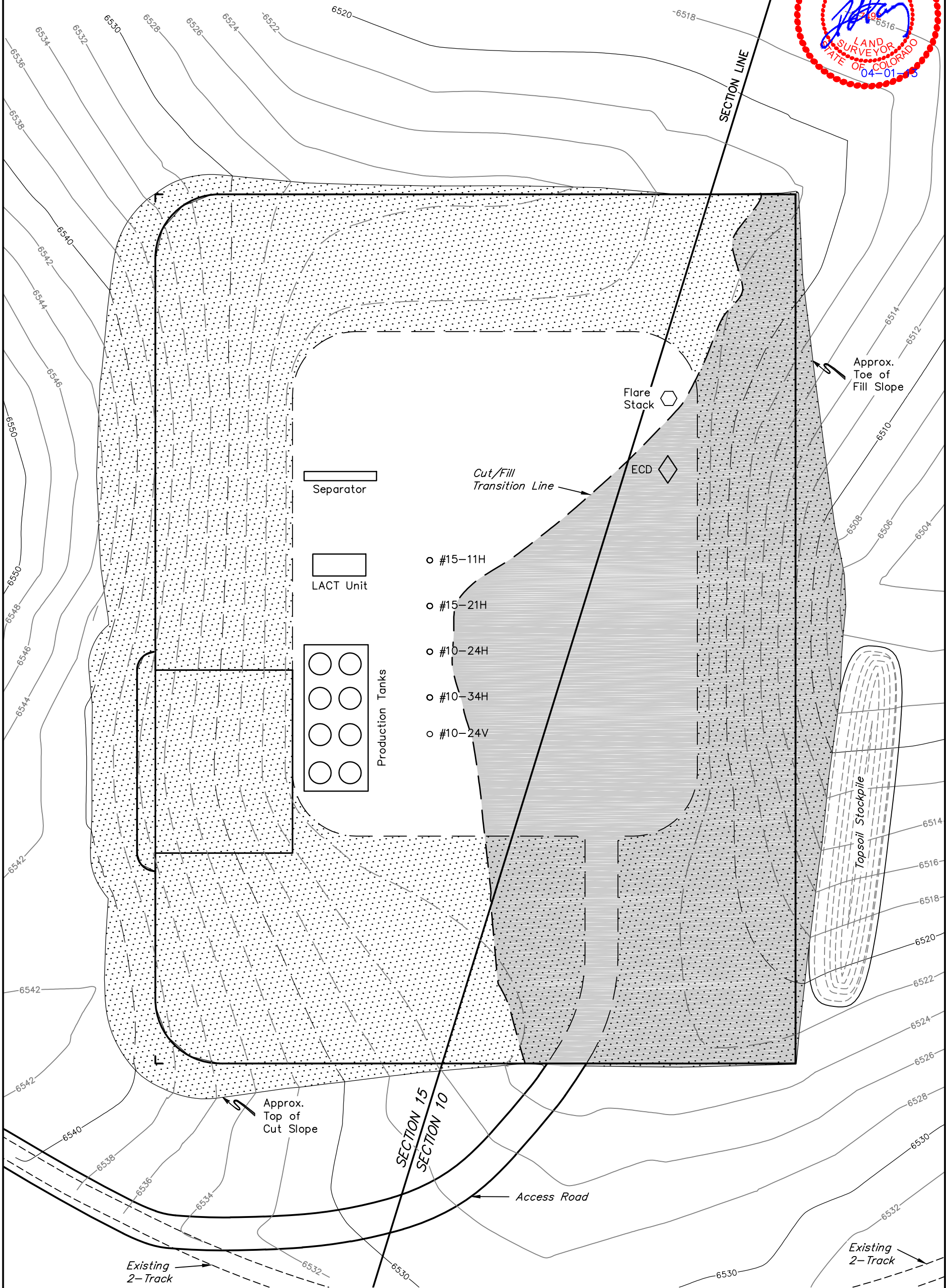
AXIA ENERGY

RECLAMATION DIAGRAM FOR

BULLDOG #10-24V-890, #10-34H-890, #10-24H-890, #15-21H-890 & #15-11H-890
SECTION 15, T8N, R90W, 6th P.M.
LOT 2

FIGURE #4

SCALE: 1" = 50'
DATE: 02-19-13
DRAWN BY: T.B.
REVISED: 04-01-13 T.B.



RECLAIMED AREA

APPROXIMATE ACREAGES
UN-RECLAIMED = ± 1.430 ACRES

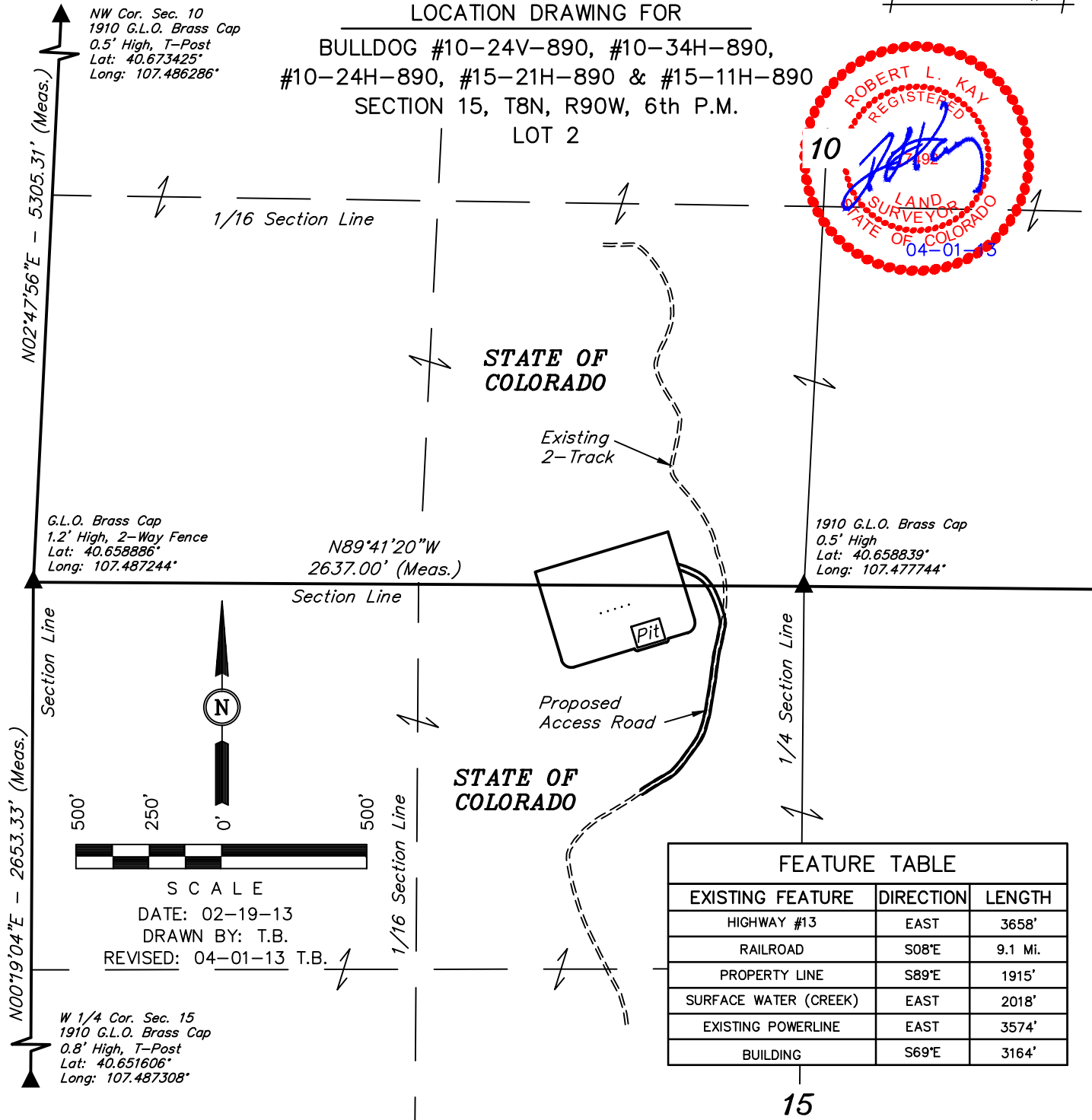
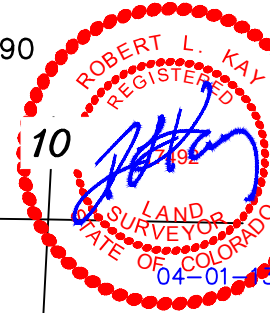
UINTAH ENGINEERING & LAND SURVEYING
85 So. 200 East * Vernal, Utah 84078 * (435) 789-1017

AXIA ENERGY

LOCATION DRAWING FOR

BULLDOG #10-24V-890, #10-34H-890,
#10-24H-890, #15-21H-890 & #15-11H-890
SECTION 15, T8N, R90W, 6th P.M.
LOT 2

FIGURE #5



PLANT COMMUNITY

- ☐ DISTURBED GRASSLAND
- ☐ NATIVE GRASSLAND
- ☐ SHRUB LAND
- ☐ PLAINS RIPARIAN
- ☐ MOUNTAIN RIPARIAN
- ☐ FOREST LAND
- ☐ WETLANDS AQUATIC
- ☐ ALPINE
- ☐ OTHER (Describe): _____

CURRENT LAND USE

- CROP LAND: ☐ IRRIGATED ☐ DRY LAND ☐ IMPROVED PASTURE ☐ HAY MEADOW ☐ CRP
- NON-CROP LAND: ☐ RANGELAND ☐ TIMBER ☐ RECREATIONAL ☐ OTHER (Describe) _____
- SUBDIVIDED: ☐ INDUSTRIAL ☐ COMMERCIAL ☐ RESIDENTIAL _____

FUTURE LAND USE

- CROP LAND: ☐ IRRIGATED ☐ DRY LAND ☐ IMPROVED PASTURE ☐ HAY MEADOW ☐ CRP
- NON-CROP LAND: ☐ RANGELAND ☐ TIMBER ☐ RECREATIONAL ☐ OTHER (Describe) _____
- SUBDIVIDED: ☐ INDUSTRIAL ☐ COMMERCIAL ☐ RESIDENTIAL _____

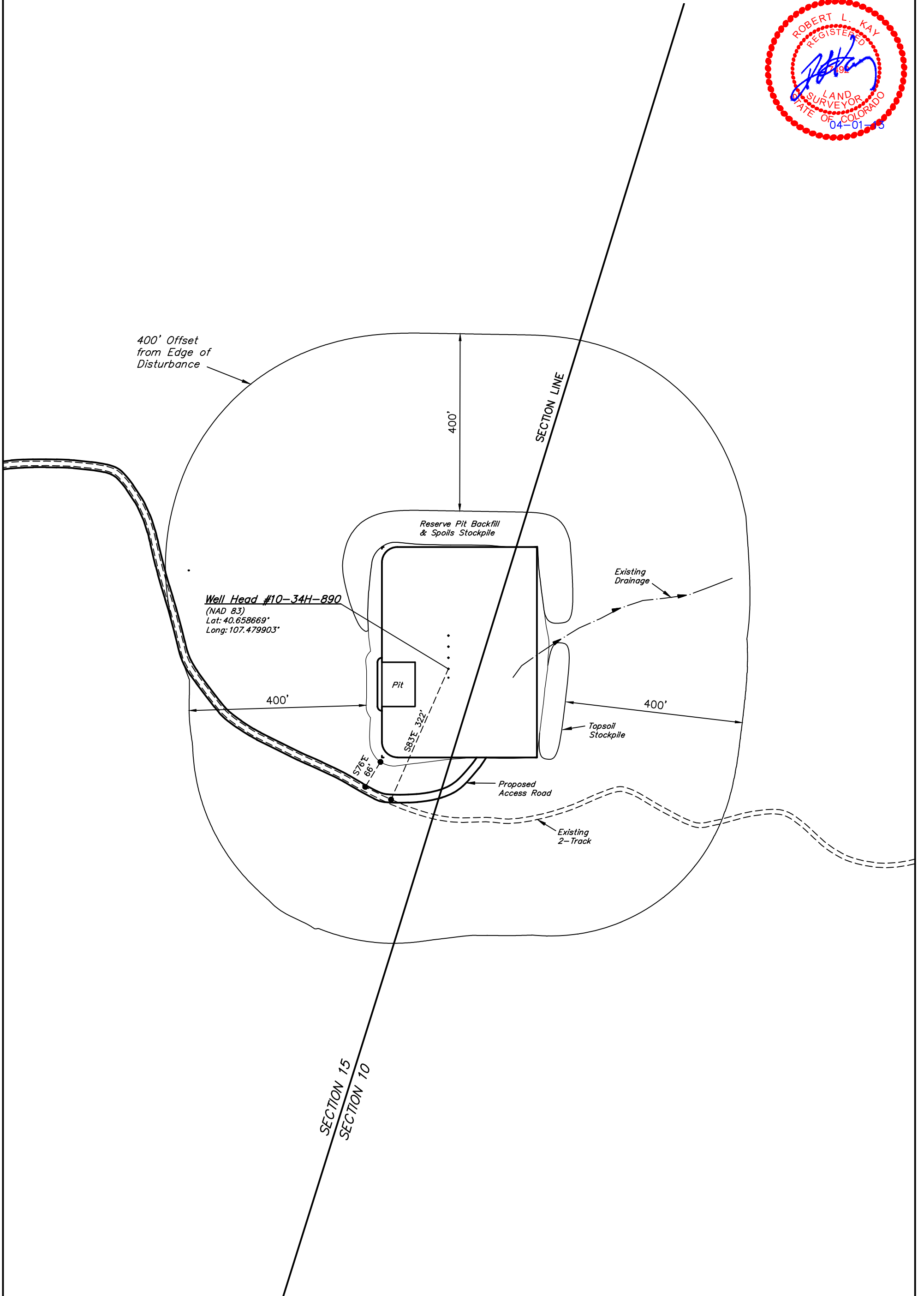
AXIA ENERGY

LOCATION DRAWING DETAIL FOR

BULLDOG #10-24V-890, #10-34H-890, #10-24H-890, #15-21H-890 & #15-11H-890
SECTION 15, T8N, R90W, 6th P.M.
LOT 2

FIGURE #5A

SCALE: 1" = 200'
DATE: 02-19-13
DRAWN BY: T.B.
REVISED: 04-01-13 T.B.



T8N, R90W, 6th P.M.

AXIA ENERGY

Well location, BULLDOG #15-11H-890 (SURFACE LOCATION), located as shown in LOT 2 of Section 15, T8N, R90W, 6th P.M., Moffat County, Colorado.

BASIS OF ELEVATION

SPOT ELEVATION LOCATED AT THE SOUTHWEST CORNER OF SECTION 15, T7N, R91W, 6th P.M. TAKEN FROM THE CRAIG QUADRANGLE, COLORADO, MOFFAT COUNTY, 7.5 MINUTE QUAD (TOPOGRAPHIC MAP) PUBLISHED BY THE UNITED STATES DEPARTMENT OF THE INTERIOR, GEOLOGICAL SURVEY. SAID ELEVATION IS MARKED AS BEING 6672 FEET.

BASIS OF BEARINGS

BASIS OF BEARINGS IS A G.P.S. OBSERVATION.



CERTIFICATE

THIS IS TO CERTIFY THAT THE ABOVE PLAT WAS PREPARED FROM FIELD NOTES OF ACTUAL SURVEYS MADE BY ME OR UNDER MY SUPERVISION AND THAT THE SAME ARE TRUE AND CORRECT TO THE BEST OF MY KNOWLEDGE AND BELIEF.

REGISTERED LAND SURVEYOR
STATE OF COLORADO
REGISTRATION NO. 19200
EXPIRATION DATE 03-01-13

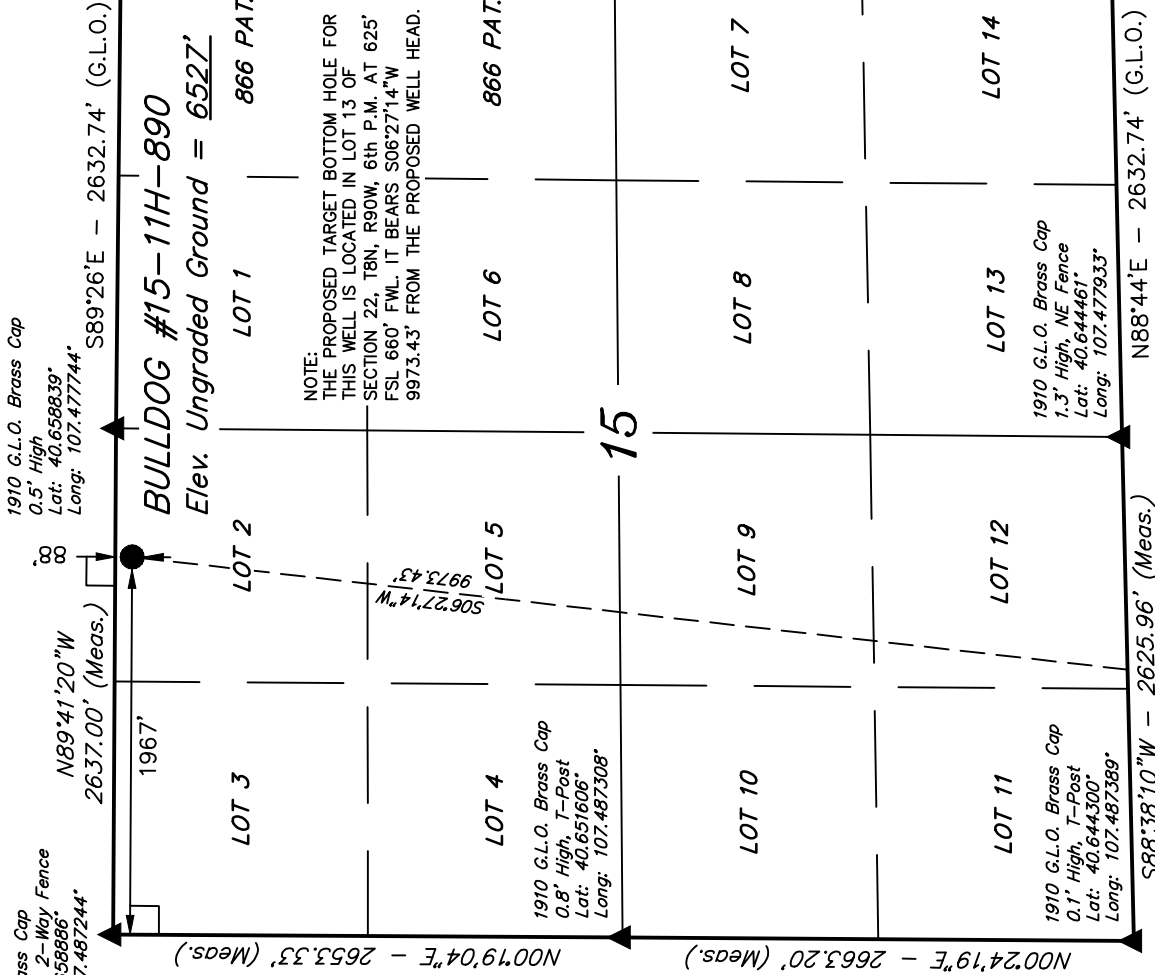
REVISED: 03-01-13

UNTAH ENGINEERING & LAND SURVEYING

85 SOUTH 200 EAST - VERNAL, UTAH 84078

(435) 789-1017

SCALE 1" = 1000'	DATE SURVEYED: 02-05-13	DATE DRAWN: 02-13-13
PARTY G.M. M.M. T.B.	REFERENCES G.L.O. PLAT	
WEATHER COLD	FILE	AXIA ENERGY



Target Bottom Hole

LEGEND:

— = 90° SYMBOL

● = PROPOSED WELL HEAD.

▲ = SECTION CORNERS LOCATED.

PDOP = 1.3

NAD 83 (SURFACE LOCATION) LATITUDE = 40°39'31.00" (40.658611) LONGITUDE = 107°28'48.58" (107.480161)
NAD 27 (SURFACE LOCATION) LATITUDE = 40°39'31.10" (40.658639) LONGITUDE = 107°28'46.35" (107.479542)
STATE PLANE NAD 83 N: 1488908.06 E: 2450654.38
STATE PLANE NAD 27 N: 488906.69 E: 1450811.80

T8N, R90W, 6th P.M.

Surface Location

AXIA ENERGY

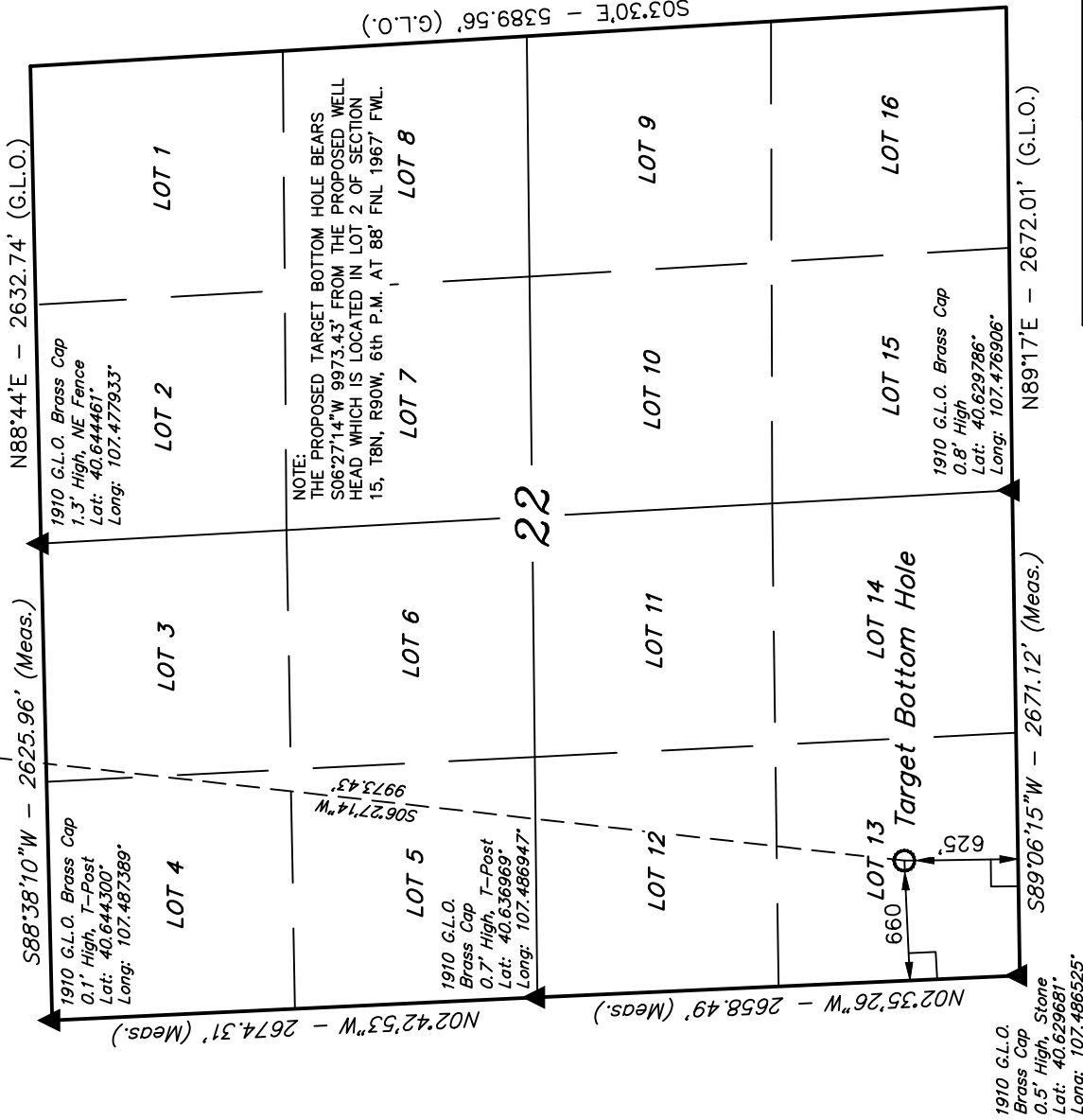
Well location, BULLDOG #15-11H-890 (TARGET BOTTOM HOLE), located as shown in LOT 13 of Section 22, T8N, R90W, 6th P.M., Moffat County, Colorado.

BASIS OF ELEVATION

SPOT ELEVATION LOCATED AT THE SOUTHWEST CORNER OF SECTION 15, T7N, R91W, 6th P.M. TAKEN FROM THE CRAIG QUADRANGLE, COLORADO, MOFFAT COUNTY, 7.5 MINUTE QUAD (TOPOGRAPHIC MAP) PUBLISHED BY THE UNITED STATES DEPARTMENT OF THE INTERIOR, GEOLOGICAL SURVEY. SAID ELEVATION IS MARKED AS BEING 6672 FEET.

BASIS OF BEARINGS

BASIS OF BEARINGS IS A G.P.S. OBSERVATION.



NOTE:
THE PROPOSED TARGET BOTTOM HOLE BEARS
S06°27'14\"W 9973.43' FROM THE PROPOSED WELL
HEAD WHICH IS LOCATED IN LOT 2 OF SECTION
15, T8N, R90W, 6th P.M. AT 88' FNL 1967' FWL.

S03°30'E - 5389.56' (G.L.O.)



1000'
500'
0'
500'
1000'

S C A L E

CERTIFICATE

THIS IS TO CERTIFY THAT THE ABOVE PLAT WAS PREPARED FROM
FIELD NOTES OF ACTUAL SURVEYS MADE BY ME OR UNDER MY
SUPERVISION AND THAT THE SAME ARE TRUE AND CORRECT TO THE
BEST OF MY KNOWLEDGE AND BELIEF.

REGISTERED LAND SURVEYOR
STATE OF COLORADO
REGISTRATION # 1592
EXPIRATION DATE 02-27-13

UNTAH ENGINEERING & LAND SURVEYING
85 SOUTH 200 EAST - VERNAL, UTAH 84078
(435) 789-1017

SCALE 1" = 1000'	DATE SURVEYED: 02-05-13	DATE DRAWN: 02-13-13
PARTY G.M. M.M. T.B.	REFERENCES G.L.O. PLAT	
WEATHER COLD	FILE	AXIA ENERGY

NAD 83 (TARGET BOTTOM HOLE) LATITUDE = 40°37'53.12" (40.631422) LONGITUDE = 107°29'03.29" (107.484247)
NAD 27 (TARGET BOTTOM HOLE) LATITUDE = 40°37'53.22" (40.631450) LONGITUDE = 107°29'01.06" (107.483628)
STATE PLANE NAD 83 N: 1479030.50 E: 2449299.24
STATE PLANE NAD 27 N: 479029.20 E: 1449456.69

LEGEND:

- = 90° SYMBOL
- = PROPOSED WELL HEAD.
- ▲ = SECTION CORNERS LOCATED.

T8N, R90W, 6th P.M.

AXIA ENERGY

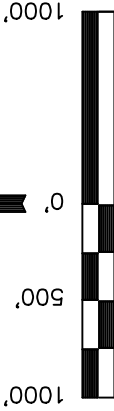
Well location, BULLDOG #15-21H-890 (SURFACE LOCATION), located as shown in LOT 2 of Section 15, T8N, R90W, 6th P.M., Moffat County, Colorado.

BASIS OF ELEVATION

SPOT ELEVATION LOCATED AT THE SOUTHWEST CORNER OF SECTION 15, T7N, R91W, 6th P.M. TAKEN FROM THE CRAIG QUADRANGLE, COLORADO, MOFFAT COUNTY, 7.5 MINUTE QUAD (TOPOGRAPHIC MAP) PUBLISHED BY THE UNITED STATES DEPARTMENT OF THE INTERIOR, GEOLOGICAL SURVEY. SAID ELEVATION IS MARKED AS BEING 6672 FEET.

BASIS OF BEARINGS

BASIS OF BEARINGS IS A G.P.S. OBSERVATION.



SCALE

CERTIFICATE

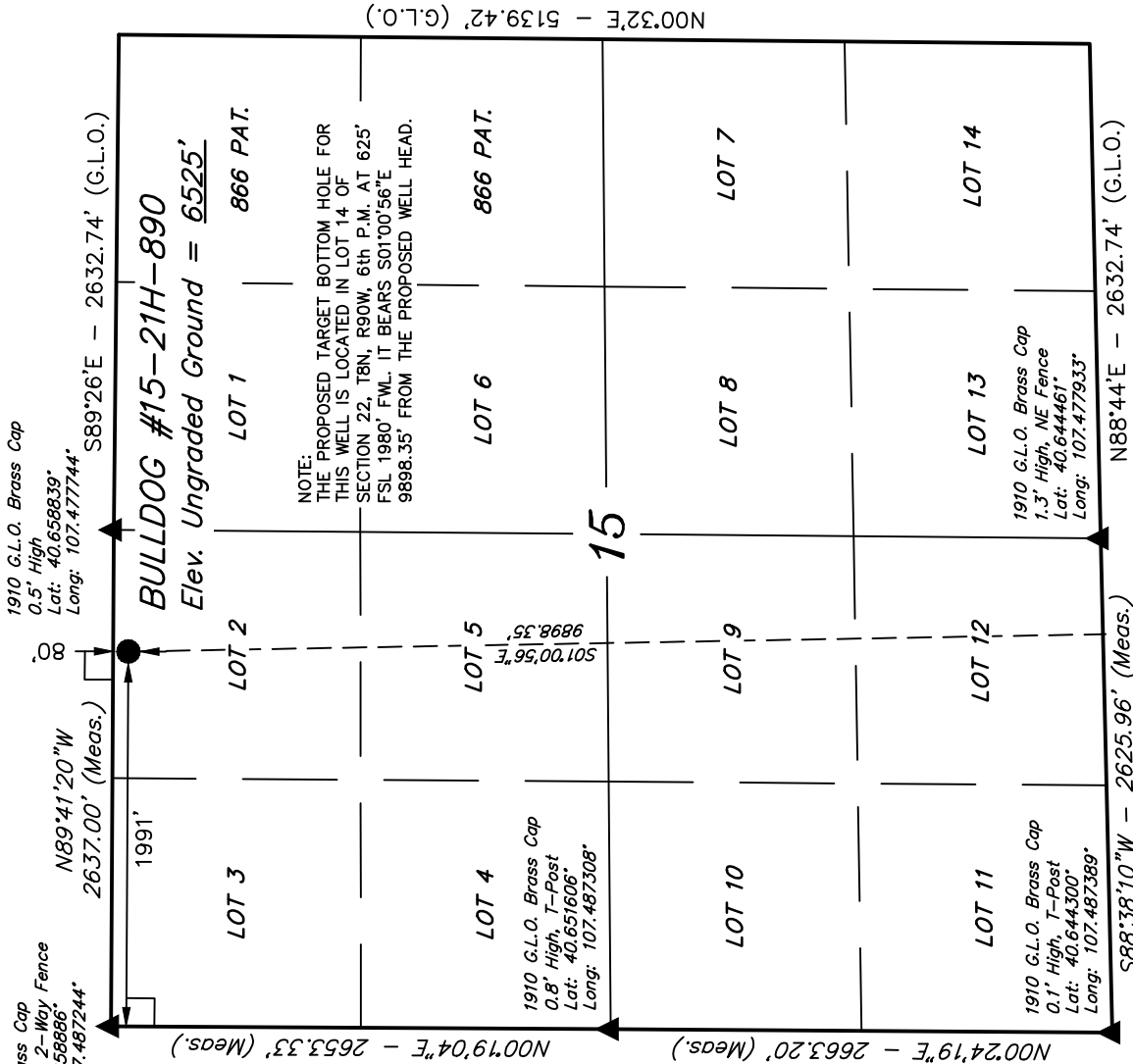
THIS IS TO CERTIFY THAT THE ABOVE PLAT WAS PREPARED FROM FIELD NOTES OF ACTUAL SURVEYS MADE BY ME OR UNDER MY SUPERVISION AND THAT THE SAME ARE TRUE AND CORRECT TO THE BEST OF MY KNOWLEDGE AND BELIEF.

REGISTERED LAND SURVEYOR
STATE OF COLORADO
REGISTRATION NO. 17492
EXPIRATION DATE 03-01-13

REVISED: 03-01-13

UNTAH ENGINEERING & LAND SURVEYING
85 SOUTH 200 EAST - VERNAL, UTAH 84078
(435) 789-1017

SCALE	DATE SURVEYED:	DATE DRAWN:
1" = 1000'	02-05-13	02-13-13
PARTY	REFERENCES	
G.M. M.M. T.B.	G.L.O. PLAT	
WEATHER	FILE	
COLD	AXIA ENERGY	



LEGEND:

- 90° SYMBOL
- PROPOSED WELL HEAD.
- SECTION CORNERS LOCATED.

Target Bottom Hole

NAD 83 (SURFACE LOCATION)
LATITUDE = 40°39'31.07" (40.658631)
LONGITUDE = 107°28'48.27" (107.480075)
NAD 27 (SURFACE LOCATION)
LATITUDE = 40°39'31.17" (40.658658)
LONGITUDE = 107°28'46.04" (107.479456)
STATE PLANE NAD 83
N: 1488914.70 E: 2450678.46
STATE PLANE NAD 27
N: 488913.33 E: 1450835.88

PDOP = 1.3

T8N, R90W, 6th P.M.

AXIA ENERGY

Surface Location

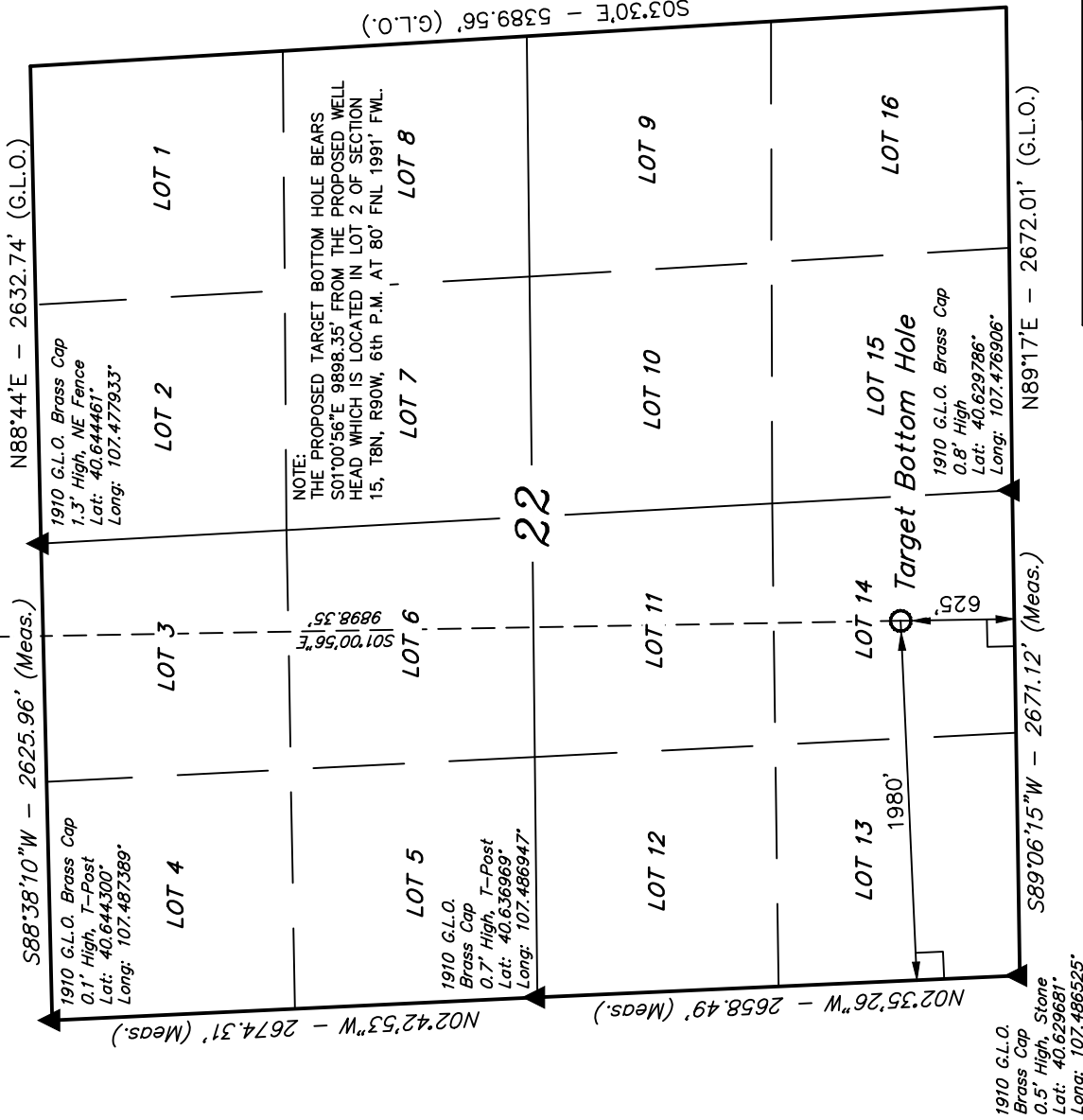
Well location, BULLDOG #15-21H-890 (TARGET BOTTOM HOLE), located as shown in LOT 14 of Section 22, T8N, R90W, 6th P.M., Moffat County, Colorado.

BASIS OF ELEVATION

SPOT ELEVATION LOCATED AT THE SOUTHWEST CORNER OF SECTION 15, T7N, R91W, 6th P.M. TAKEN FROM THE CRAIG QUADRANGLE, COLORADO, MOFFAT COUNTY, 7.5 MINUTE QUAD (TOPOGRAPHIC MAP) PUBLISHED BY THE UNITED STATES DEPARTMENT OF THE INTERIOR, GEOLOGICAL SURVEY. SAID ELEVATION IS MARKED AS BEING 6672 FEET.

BASIS OF BEARINGS

BASIS OF BEARINGS IS A G.P.S. OBSERVATION.



NOTE:
THE PROPOSED TARGET BOTTOM HOLE BEARS
S01°00'56\"/>

S03°30'E - 5389.56' (G.L.O.)



1000'
500'
0'
500'
1000'

S C A L E

CERTIFICATE

THIS IS TO CERTIFY THAT THE ABOVE PLAT WAS PREPARED FROM FIELD NOTES OF ACTUAL SURVEYS MADE BY ME OR UNDER MY SUPERVISION AND THAT THE SAME ARE TRUE AND CORRECT TO THE BEST OF MY KNOWLEDGE AND BELIEF.

REGISTERED LAND SURVEYOR
STATE OF COLORADO
EXPIRATION DATE 02-27-13
02-27-13

UNTAH ENGINEERING & LAND SURVEYING
85 SOUTH 200 EAST - VERNAL, UTAH 84078
(435) 789-1017

NAD 83 (TARGET BOTTOM HOLE)
LATITUDE = 40°37'53.30" (40.631472)
LONGITUDE = 107°28'46.17" (107.479492)
NAD 27 (TARGET BOTTOM HOLE)
LATITUDE = 40°37'53.41" (40.631503)
LONGITUDE = 107°28'43.94" (107.478872)
STATE PLANE NAD 83
N: 1479019.85 E: 2450619.33
STATE PLANE NAD 27
N: 479018.54 E: 1450776.78

LEGEND:

— = 90° SYMBOL

● = PROPOSED WELL HEAD.

▲ = SECTION CORNERS LOCATED.

Target Bottom Hole T8N, R90W, 6th P.M.

AXIA ENERGY

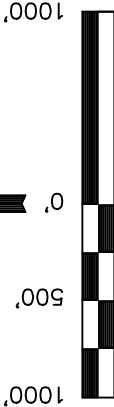
Well location, BULLDOG #10-24H-890 (SURFACE LOCATION), located as shown in LOT 2 of Section 15, T8N, R90W, 6th P.M., Moffat County, Colorado.

BASIS OF ELEVATION

SPOT ELEVATION LOCATED AT THE SOUTHWEST CORNER OF SECTION 15, T7N, R91W, 6th P.M. TAKEN FROM THE CRAIG QUADRANGLE, COLORADO, MOFFAT COUNTY, 7.5 MINUTE QUAD (TOPOGRAPHIC MAP) PUBLISHED BY THE UNITED STATES DEPARTMENT OF THE INTERIOR, GEOLOGICAL SURVEY. SAID ELEVATION IS MARKED AS BEING 6672 FEET.

BASIS OF BEARINGS

BASIS OF BEARINGS IS A G.P.S. OBSERVATION.



SCALE

CERTIFICATE

THIS IS TO CERTIFY THAT THE ABOVE PLAT WAS PREPARED FROM FIELD NOTES OF ACTUAL SURVEYS MADE BY ME OR UNDER MY SUPERVISION AND THAT THE SAME ARE TRUE AND CORRECT TO THE BEST OF MY KNOWLEDGE AND BELIEF.

REGISTERED LAND SURVEYOR
STATE OF COLORADO
REGISTRATION NO. 17492
EXPIRATION DATE 03-01-13

REVISED: 03-01-13

UNTAH ENGINEERING & LAND SURVEYING
85 SOUTH 200 EAST - VERNAL, UTAH 84078
(435) 789-1017

LEGEND:

— = 90° SYMBOL

● = PROPOSED WELL HEAD.

▲ = SECTION CORNERS LOCATED.

PDOP = 1.4

NAD 83 (SURFACE LOCATION)

LATITUDE = 40°39'31.14" (40.658650)
LONGITUDE = 107°28'47.96" (107.479989)

NAD 27 (SURFACE LOCATION)

LATITUDE = 40°39'31.25" (40.658681)
LONGITUDE = 107°28'45.73" (107.479369)

STATE PLANE NAD 83

N: 1488921.38 E: 2450702.53

STATE PLANE NAD 27

N: 488920.01 E: 1450859.95

G.L.O. Brass Cap
1.2' High, 2-Way Fence
Lat: 40.65886°
Long: 107.487244°

N89°41'20"W
2637.00' (Meas.)

1910 G.L.O. Brass Cap
0.5' High
Lat: 40.658839°
Long: 107.477744°

S89°26'E - 2632.74' (G.L.O.)

BULLDOG #10-24H-890

Elev. Ungraded Ground = 6525'

866 PAT.

NOTE:
THE PROPOSED TARGET BOTTOM HOLE FOR
THIS WELL IS LOCATED IN LOT 6 OF
SECTION 3, T8N, R90W, 6th P.M. AT 625'
FNL 1980' FWL. IT BEARS N01°14'44"E
10093.27' FROM THE PROPOSED WELL HEAD.

866 PAT.

N00°32'E - 5139.42' (G.L.O.)

N01°14'44"E
10093.27'

2015'

72'

LOT 2

LOT 3

LOT 1

866 PAT.

LOT 5

LOT 4

LOT 6

1910 G.L.O. Brass Cap
0.8' High, T-Post
Lat: 40.651606°
Long: 107.487308°

15

LOT 10

LOT 9

LOT 8

LOT 7

LOT 11

LOT 12

LOT 13

LOT 14

1910 G.L.O. Brass Cap
1.3' High, NE Fence
Lat: 40.644461°
Long: 107.477933°

S88°38'10"W - 2625.96' (Meas.)

N88°44'E - 2632.74' (G.L.O.)

— = 90° SYMBOL

● = PROPOSED WELL HEAD.

▲ = SECTION CORNERS LOCATED.

SW Cor. Sec. 34
2013 UELS
Private Alum. Cap.
Fence Cor.
Lat: 40.688467°
Long: 107.486286°

T8N, R90W, 6th P.M.

AXIA ENERGY

1910 G.L.O. Brass Cap
1.0' High, E-W Fence,
T-Post
Lat: 40.687392°
Long: 107.467600°

S85°45'39"E - 5431.27' (Meas.)
T9N
232.98'

C.C. 2013 UELS
Private Alum. Cap.
Fence Cor.
Lat: 40.688467°
Long: 107.486286°

LOT 7

Target Bottom Hole
MILITARY
WARRANT
NO. 6 PAT.

LOT 6

LOT 8
1910 G.L.O. Brass Cap
1.0' High,
3-Way Fence Cor.
Lat: 40.680719°
Long: 107.486281°

LOT 9

MILITARY
WARRANT
NO. 6 PAT.

LOT 10

1910 G.L.O. Brass Cap
0.8' High, N-S Fence
Lat: 40.679878°
Long: 107.467081°

LOT 14

LOT 13

LOT 12

LOT 11

LOT 15
1910 G.L.O. Brass Cap
0.5' High, T-Post
Lat: 40.673425°
Long: 107.486286°

LOT 16

LOT 17
G.L.O. Brass Cap
0.6' High, 2-Way Fence
Lat: 40.673139°
Long: 107.476747°

LOT 18

1910 G.L.O. Brass Cap
0.5' High, N-S Fence
Lat: 40.672836°
Long: 107.467153°

N87°48'53"W - 2648.88' (Meas.)

N87°42'21"W - 2664.72' (Meas.)

LEGEND:

└─ = 90° SYMBOL

● = PROPOSED WELL HEAD.

▲ = SECTION CORNERS
LOCATED.

● Surface Location

▲ BASIS OF BEARINGS

BASIS OF BEARINGS IS A G.P.S. OBSERVATION.

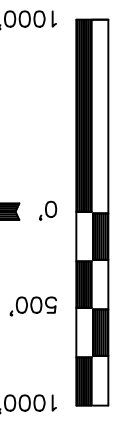
NAD 83 (TARGET BOTTOM HOLE)
LATITUDE = 40°41'10.81" (40.686336)
LONGITUDE = 107°28'44.93" (107.479147)
NAD 27 (TARGET BOTTOM HOLE)
LATITUDE = 40°41'10.92" (40.686367)
LONGITUDE = 107°28'42.70" (107.478528)
STATE PLANE NAD 83
N: 1499000.89 E: 2451160.87
STATE PLANE NAD 27
N: 498999.46 E: 1451318.25

Well location, BULLDOG #10-24H-890 (TARGET BOTTOM HOLE), located as shown in LOT 6 of Section 3, T8N, R90W, 6th P.M., Moffat County, Colorado.

South 1/4 Cor. Sec. 35
1910 G.L.O. Brass Cap
1.0' High
Lat: 40.687300°
Long: 107.457936°

BASIS OF ELEVATION

SPOT ELEVATION LOCATED AT THE SOUTHWEST CORNER OF SECTION 15, T7N, R91W, 6th P.M. TAKEN FROM THE CRAIG QUADRANGLE, COLORADO, MOFFAT COUNTY, 7.5 MINUTE QUAD (TOPOGRAPHIC MAP) PUBLISHED BY THE UNITED STATES DEPARTMENT OF THE INTERIOR, GEOLOGICAL SURVEY. SAID ELEVATION IS MARKED AS BEING 6672 FEET.



SCALE

CERTIFICATE

THIS IS TO CERTIFY THAT THE ABOVE PLAT WAS PREPARED FROM FIELD NOTES OF ACTUAL SURVEYS MADE BY ME OR UNDER MY SUPERVISION AND THAT THE SAME ARE TRUE AND CORRECT TO THE BEST OF MY KNOWLEDGE AND BELIEF.

REGISTERED LAND SURVEYOR
STATE OF COLORADO
No. 1792
Exp. 02-27-13

UNTAH ENGINEERING & LAND SURVEYING

85 SOUTH 200 EAST - VERNAL, UTAH 84078

(435) 789-1017

SCALE	DATE SURVEYED:	DATE DRAWN:
1" = 1000'	02-05-13	02-13-13
PARTY	REFERENCES	
G.M. M.M. T.B.	G.L.O. PLAT	
WEATHER	FILE	
COLD	AXIA ENERGY	

Target Bottom Hole T8N, R90W, 6th P.M.

AXIA ENERGY

Well location, BULLDOG #10-34H-890 (SURFACE LOCATION), located as shown in LOT 2 of Section 15, T8N, R90W, 6th P.M., Moffat County, Colorado.

BASIS OF ELEVATION

SPOT ELEVATION LOCATED AT THE SOUTHWEST CORNER OF SECTION 15, T7N, R91W, 6th P.M. TAKEN FROM THE CRAIG QUADRANGLE, COLORADO, MOFFAT COUNTY, 7.5 MINUTE QUAD (TOPOGRAPHIC MAP) PUBLISHED BY THE UNITED STATES DEPARTMENT OF THE INTERIOR, GEOLOGICAL SURVEY. SAID ELEVATION IS MARKED AS BEING 6672 FEET.

BASIS OF BEARINGS

BASIS OF BEARINGS IS A G.P.S. OBSERVATION.



SCALE

CERTIFICATE

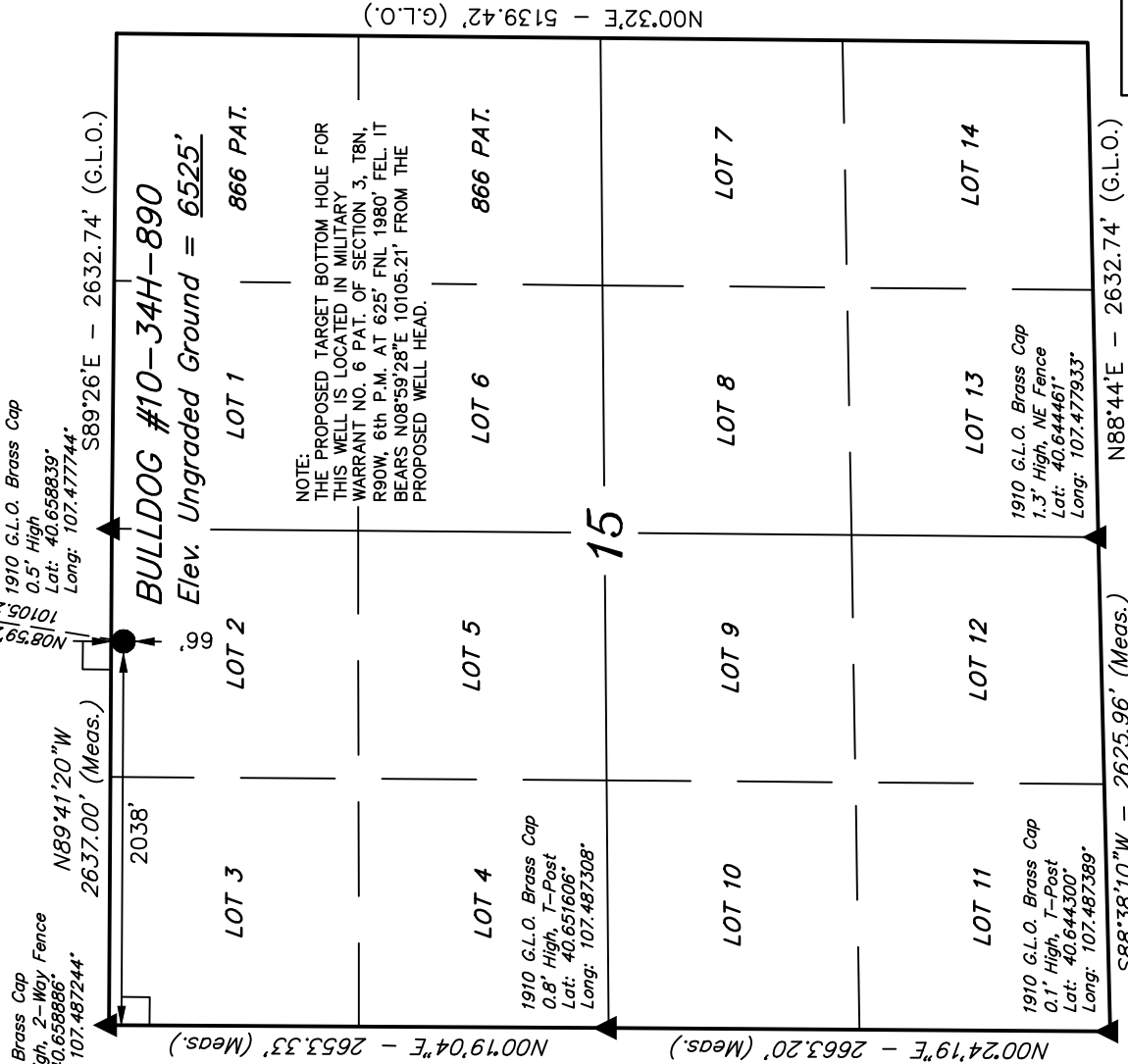
THIS IS TO CERTIFY THAT THE ABOVE PLAT WAS PREPARED FROM FIELD NOTES OF ACTUAL SURVEYS MADE BY ME OR UNDER MY SUPERVISION AND THAT THE SAME ARE TRUE AND CORRECT TO THE BEST OF MY KNOWLEDGE AND BELIEF.

REGISTERED LAND SURVEYOR
STATE OF COLORADO
REGISTRATION NO. 17492
EXPIRATION DATE 03-01-13

REVISED: 03-01-13

UNTAH ENGINEERING & LAND SURVEYING
85 SOUTH 200 EAST - VERNAL, UTAH 84078
(435) 789-1017

SCALE	DATE SURVEYED:	DATE DRAWN:
1" = 1000'	02-05-13	02-13-13
PARTY	REFERENCES	
G.M. M.M. T.B.	G.L.O. PLAT	
WEATHER	FILE	
COLD	AXIA ENERGY	



LEGEND:

- 90° SYMBOL
- PROPOSED WELL HEAD.
- SECTION CORNERS LOCATED.

PDOP = 1.3

NAD 83 (SURFACE LOCATION)
LATITUDE = 40°39'31.21" (40.658669)
LONGITUDE = 107°28'47.65" (107.479903)
NAD 27 (SURFACE LOCATION)
LATITUDE = 40°39'31.32" (40.658700)
LONGITUDE = 107°28'45.42" (107.479283)
STATE PLANE NAD 83
N: 1488928.09 E: 2450726.64
STATE PLANE NAD 27
N: 488926.72 E: 1450884.06

SW Cor. Sec. 34
2013 UELS
Private Alum. Cap.
Fence Cor.
Lat: 40.688467°
Long: 107.486286°

T8N, R90W, 6th P.M.

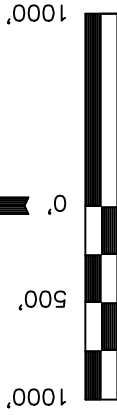
AXIA ENERGY

Well location, BULLDOG #10-34H-890 (TARGET BOTTOM HOLE), located as shown in MILITARY WARRANT NO. 6 PAT. of Section 3, T8N, R90W, 6th P.M., Moffat County, Colorado.

South 1/4 Cor. Sec. 35
1910 G.L.O. Brass Cap
1.0' High
Lat: 40.687300°
Long: 107.457936°

BASIS OF ELEVATION

SPOT ELEVATION LOCATED AT THE SOUTHWEST CORNER OF SECTION 15, T7N, R91W, 6th P.M. TAKEN FROM THE CRAIG QUADRANGLE, COLORADO, MOFFAT COUNTY, 7.5 MINUTE QUAD (TOPOGRAPHIC MAP) PUBLISHED BY THE UNITED STATES DEPARTMENT OF THE INTERIOR, GEOLOGICAL SURVEY. SAID ELEVATION IS MARKED AS BEING 6672 FEET.



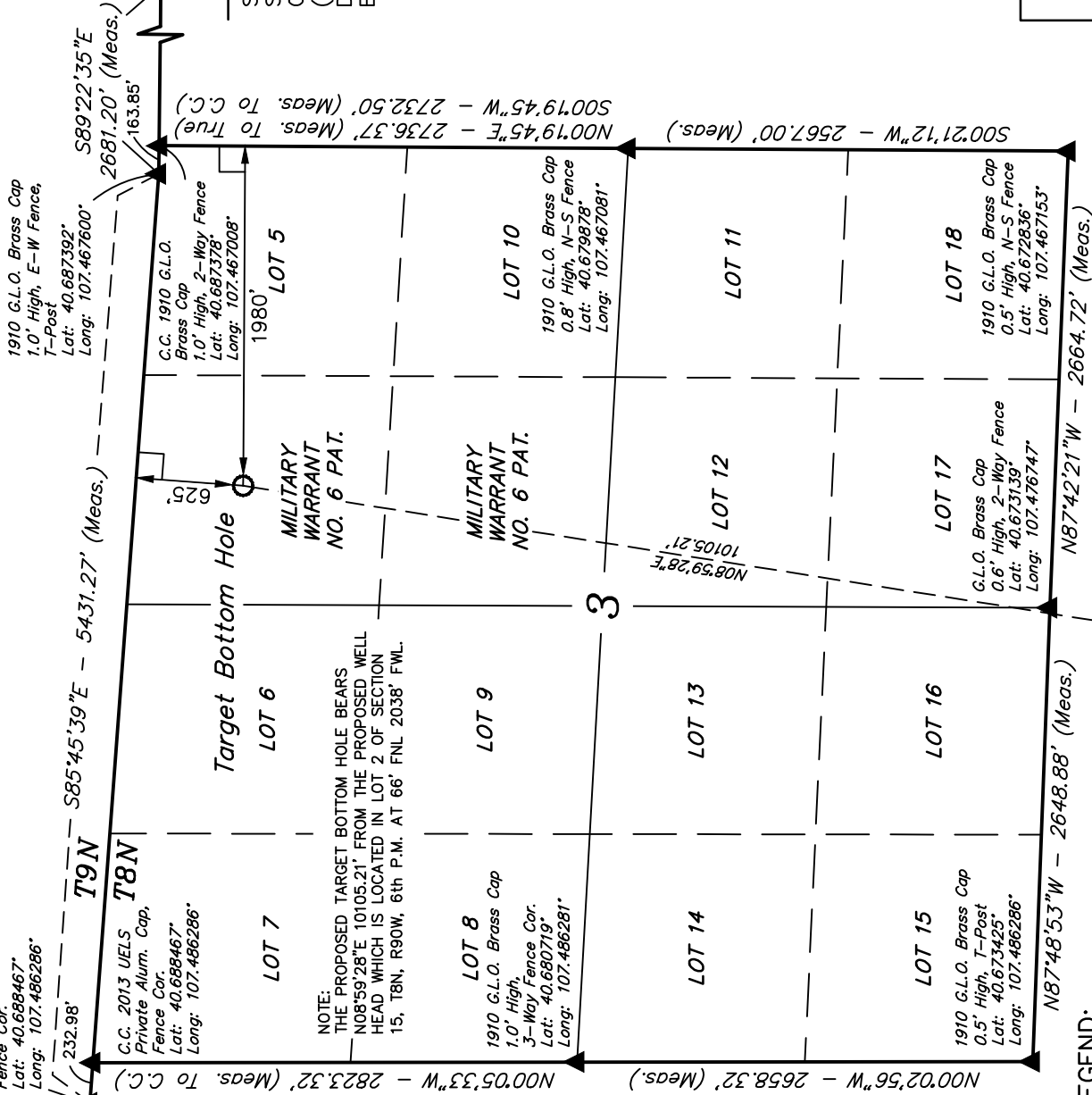
CERTIFICATE

THIS IS TO CERTIFY THAT THE ABOVE PLAT WAS PREPARED FROM FIELD NOTES OF ACTUAL SURVEYS MADE BY ME OR UNDER MY SUPERVISION AND THAT THE SAME ARE TRUE AND CORRECT TO THE BEST OF MY KNOWLEDGE AND BELIEF.

REGISTERED LAND SURVEYOR
STATE OF COLORADO
No. 1498865
Exp. 02-27-13

UTAH ENGINEERING & LAND SURVEYING
85 SOUTH 200 EAST - VERNAL, UTAH 84078
(435) 789-1017

SCALE	DATE SURVEYED:	DATE DRAWN:
1" = 1000'	02-05-13	02-13-13
PARTY	REFERENCES	
G.M. M.M. T.B.	G.L.O. PLAT	
WEATHER	FILE	
COLD	AXIA ENERGY	



NAD 83 (TARGET BOTTOM HOLE)
LATITUDE = 40°41'09.78\" (40.686050)
LONGITUDE = 107°28'26.97\" (107.474158)
NAD 27 (TARGET BOTTOM HOLE)
LATITUDE = 40°41'09.89\" (40.686081)
LONGITUDE = 107°28'24.74\" (107.473539)
STATE PLANE NAD 83
N: 1498865.59 E: 2452541.41
STATE PLANE NAD 27
N: 498864.16 E: 1452698.80

LEGEND:
90° SYMBOL
PROPOSED WELL HEAD.
SECTION CORNERS LOCATED.
Surface Location
BASIS OF BEARINGS
BASIS OF BEARINGS IS A G.P.S. OBSERVATION.

T8N, R90W, 6th P.M.

AXIA ENERGY

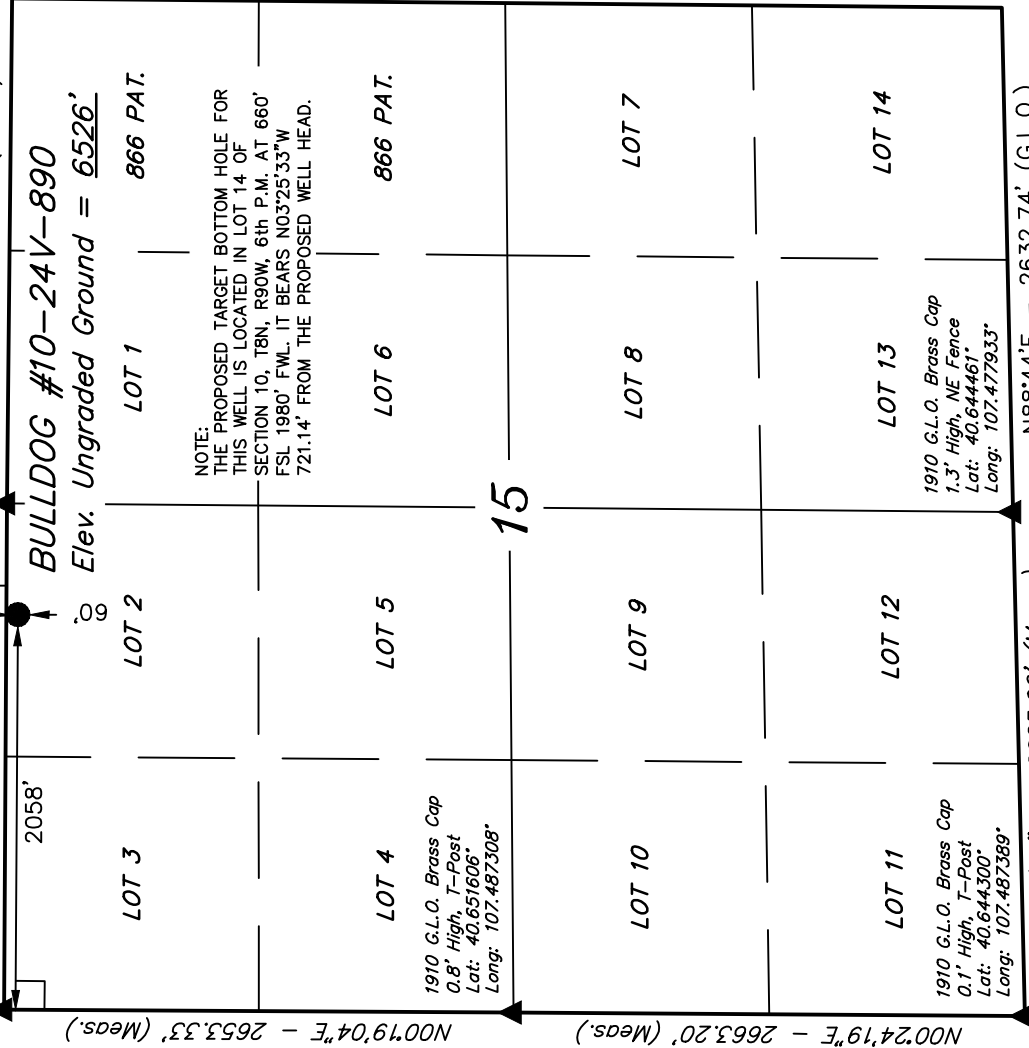
Target Bottom Hole Q

G.L.O. Brass Cap
1.2' High, 2-Way Fence
Lat: 40.658866°
Long: 107.487244°

1910 G.L.O. Brass Cap
0.5' High
Lat: 40.658839°
Long: 107.477744°

N89°41'20"W
2637.00' (Meas.)

S89°26'E - 2632.74' (G.L.O.)



BULLDOG #10-24V-890
Elev. Ungraded Ground = 6526'

LOT 1

LOT 2

LOT 3

LOT 4

LOT 5

LOT 6

LOT 7

LOT 8

LOT 9

LOT 10

LOT 11

LOT 12

LOT 13

LOT 14

NOTE:
THE PROPOSED TARGET BOTTOM HOLE FOR
THIS WELL IS LOCATED IN LOT 14 OF
SECTION 10, T8N, R90W, 6th P.M. AT 660'
FSL 1980' FWL. IT BEARS N03°25'33\"W
721.14' FROM THE PROPOSED WELL HEAD.

N00°32'E - 5139.42' (G.L.O.)

BASIS OF BEARINGS IS A G.P.S. OBSERVATION.

LINE TABLE		
LINE	DIRECTION	LENGTH
L1	N03°25'29\"W	721.22'



1000'
500'
0
500'
1000'

S C A L E

CERTIFICATE

THIS IS TO CERTIFY THAT THE ABOVE PLAT WAS PREPARED FROM
FIELD NOTES OF ACTUAL SURVEYS MADE BY ME OR UNDER MY
SUPERVISION AND THAT THE SAME ARE TRUE AND CORRECT TO THE
BEST OF MY KNOWLEDGE AND BELIEF.

REGISTERED LAND SURVEYOR
STATE OF COLORADO
REGISTRATION NO. 1592
EXPIRATION DATE 04-01-13

N88°44'E - 2632.74' (G.L.O.)

S88°38'10\"W - 2625.96' (Meas.)

UTAH ENGINEERING & LAND SURVEYING

85 SOUTH 200 EAST - VERNAL, UTAH 84078

(435) 789-1017

PDOP = 1.4

NAD 83 (SURFACE LOCATION)

LATITUDE = 40°39'31.27\" (40.658866)
LONGITUDE = 107°28'47.40\" (107.479833)

NAD 27 (SURFACE LOCATION)

LATITUDE = 40°39'31.37\" (40.658714)
LONGITUDE = 107°28'45.17\" (107.479214)

STATE PLANE NAD 83

N: 1488933.34 E: 2450745.89

STATE PLANE NAD 27

N: 488931.97 E: 1450903.31

LEGEND:

└─ = 90° SYMBOL

● = PROPOSED WELL HEAD.

▲ = SECTION CORNERS LOCATED.

SCALE
1" = 1000'

DATE SURVEYED: 03-28-13
DATE DRAWN: 04-01-13

PARTY
B.H. N.F. T.B.

REFERENCES
G.L.O. PLAT

WEATHER
COLD

FILE
AXIA ENERGY

T8N, R90W, 6th P.M.

AXIA ENERGY

Well location, BULLDOG #10-24V-890 (TARGET BOTTOM HOLE), located as shown in LOT 14 of Section 10, T8N, R90W, 6th P.M., Moffat County, Colorado.

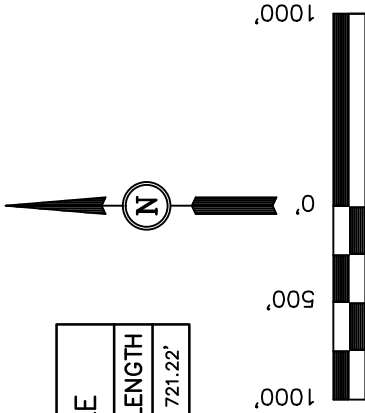
BASIS OF ELEVATION

SPOT ELEVATION LOCATED AT THE SOUTHWEST CORNER OF SECTION 15, T7N, R91W, 6th P.M. TAKEN FROM THE CRAIG QUADRANGLE, COLORADO, MOFFAT COUNTY, 7.5 MINUTE QUAD (TOPOGRAPHIC MAP) PUBLISHED BY THE UNITED STATES DEPARTMENT OF THE INTERIOR, GEOLOGICAL SURVEY. SAID ELEVATION IS MARKED AS BEING 6672 FEET.

BASIS OF BEARINGS

BASIS OF BEARINGS IS A G.P.S. OBSERVATION.

LINE TABLE		
LINE	DIRECTION	LENGTH
L1	N03°25'29"W	721.22'



CERTIFICATE

THIS IS TO CERTIFY THAT THE ABOVE PLAT WAS PREPARED FROM FIELD NOTES OF ACTUAL SURVEYS MADE BY ME OR UNDER MY SUPERVISION AND THAT THE SAME ARE TRUE AND CORRECT TO THE BEST OF MY KNOWLEDGE AND BELIEF.

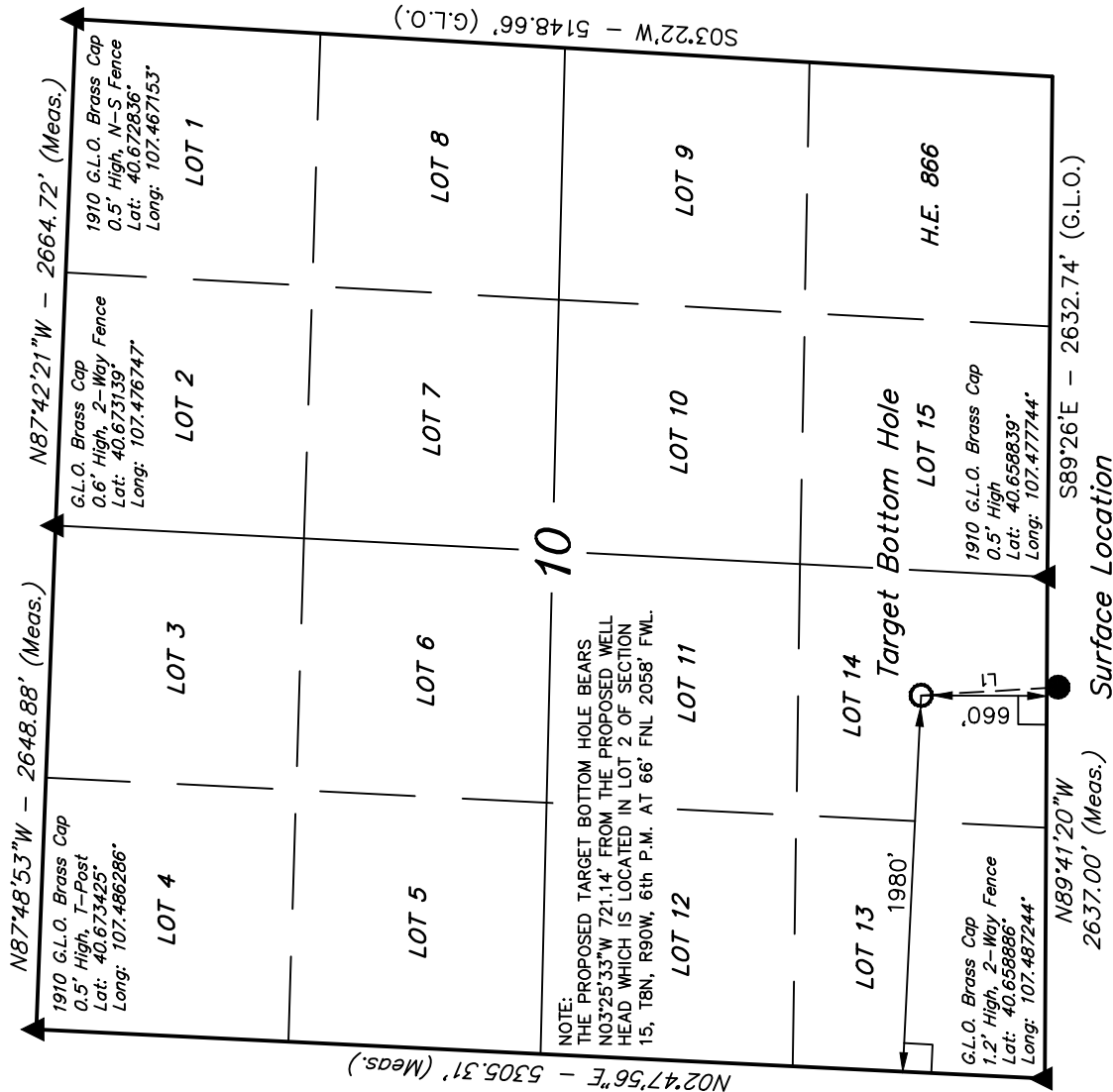
REGISTERED LAND SURVEYOR
STATE OF COLORADO
REGISTRATION NO. 19282
EXPIRATION DATE 04-01-13

UNTAH ENGINEERING & LAND SURVEYING

85 SOUTH 200 EAST - VERNAL, UTAH 84078

(435) 789-1017

SCALE	DATE SURVEYED:	DATE DRAWN:
1" = 1000'	03-28-13	04-01-13
PARTY	REFERENCES	
B.H. N.F. T.B.	G.L.O. PLAT	
WEATHER	FILE	
COLD	AXIA ENERGY	



LEGEND:

— = 90° SYMBOL

● = PROPOSED WELL HEAD.

▲ = SECTION CORNERS LOCATED.

NAD 83 (TARGET BOTTOM HOLE)
LATITUDE = 40°39'38.38" (40.660661)
LONGITUDE = 107°28'47.94" (107.479983)
NAD 27 (TARGET BOTTOM HOLE)
LATITUDE = 40°39'38.49" (40.660692)
LONGITUDE = 107°28'45.71" (107.479364)
STATE PLANE NAD 83
N: 1489653.85 E: 2450719.89
STATE PLANE NAD 27
N: 489652.48 E: 1450877.31

AXIA ENERGY
BULLDOG #10-24V-890, #10-34H-890,
#10-24H-890, #15-21H-890 & #15-11H-890
SECTION 15, T8N, R90W, 6th P.M.

PROCEED IN A NORTHERLY, THEN NORTHEASTERLY DIRECTION FROM CRAIG, COLORADO ALONG HIGHWAY 789 APPROXIMATELY 5.5 MILES TO THE JUNCTION OF THIS ROAD AND COUNTY ROAD 22 TO THE NORTHWEST; TURN LEFT AND PROCEED IN A NORTHWESTERLY, THEN WESTERLY, THEN NORTHWESTERLY DIRECTION APPROXIMATELY 1.5 MILES TO THE JUNCTION OF THIS ROAD AND AN EXISTING ROAD TO THE NORTH; TURN RIGHT AND PROCEED IN A NORTHERLY DIRECTION APPROXIMATELY 5.7 MILES TO THE BEGINNING OF THE PROPOSED ACCESS ROAD TO THE SOUTHEAST; FOLLOW ROAD FLAGS IN A SOUTHEASTERLY, THEN NORTHEASTERLY, THEN SOUTHEASTERLY, THEN NORTHEASTERLY, THEN NORTHWESTERLY DIRECTION APPROXIMATELY 14,723' TO THE PROPOSED LOCATION.

TOTAL DISTANCE FROM CRAIG, COLORADO TO THE PROPOSED WELL LOCATION IS APPROXIMATELY 15.5 MILES.