

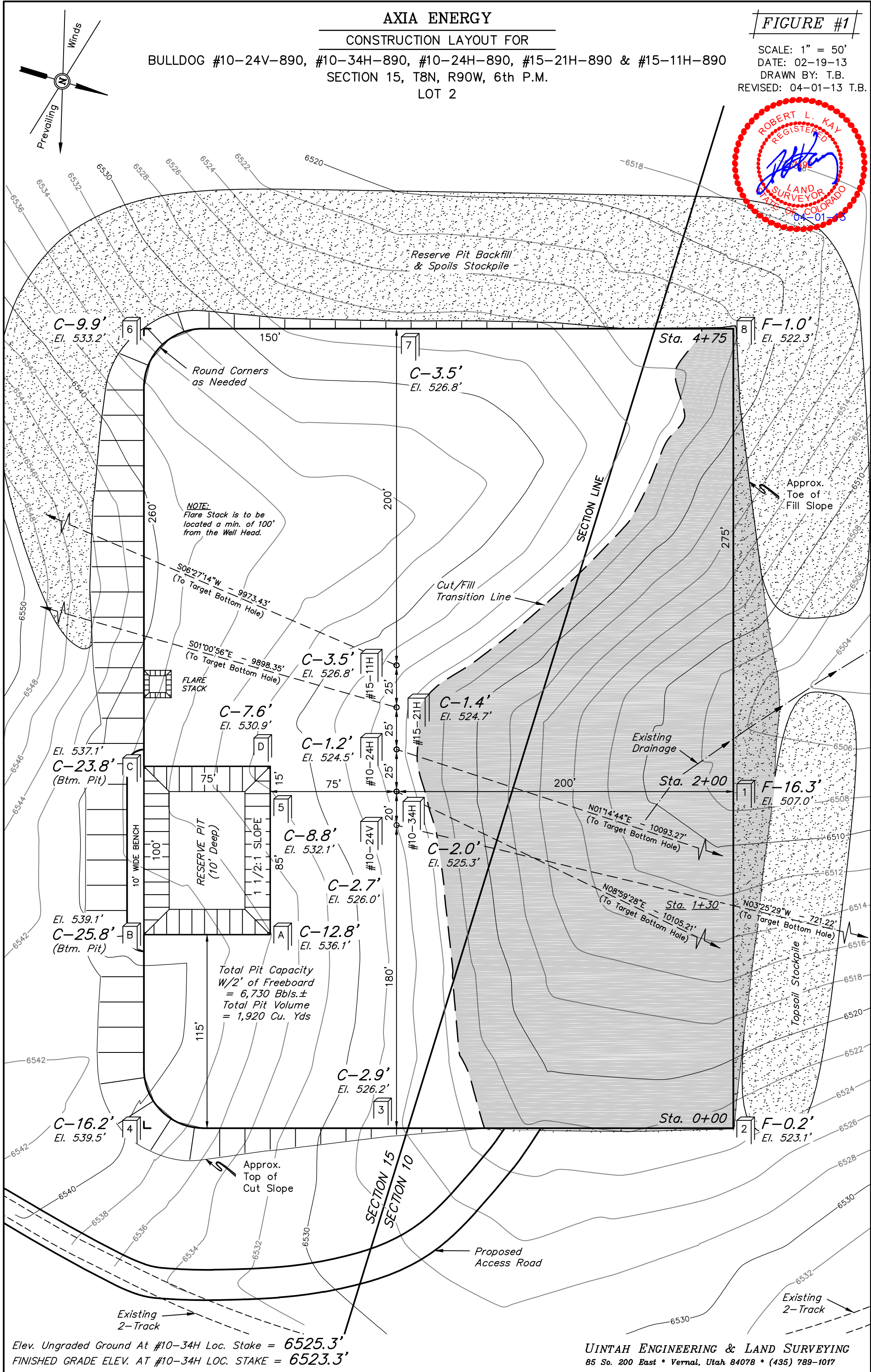
AXIA ENERGY

CONSTRUCTION LAYOUT FOR

BULLDOG #10-24V-890, #10-34H-890, #10-24H-890, #15-21H-890 & #15-11H-890
SECTION 15, T8N, R90W, 6th P.M.
LOT 2

FIGURE #1

SCALE: 1" = 50'
DATE: 02-19-13
DRAWN BY: T.B.
REVISED: 04-01-13 T.B.



AXIA ENERGY

CONSTRUCTION LAYOUT CROSS SECTIONS FOR

BULLDOG #10-24V-890, #10-34H-890, #10-24H-890, #15-21H-890 & #15-11H-890

SECTION 15, T8N, R90W, 6th P.M.

LOT 2

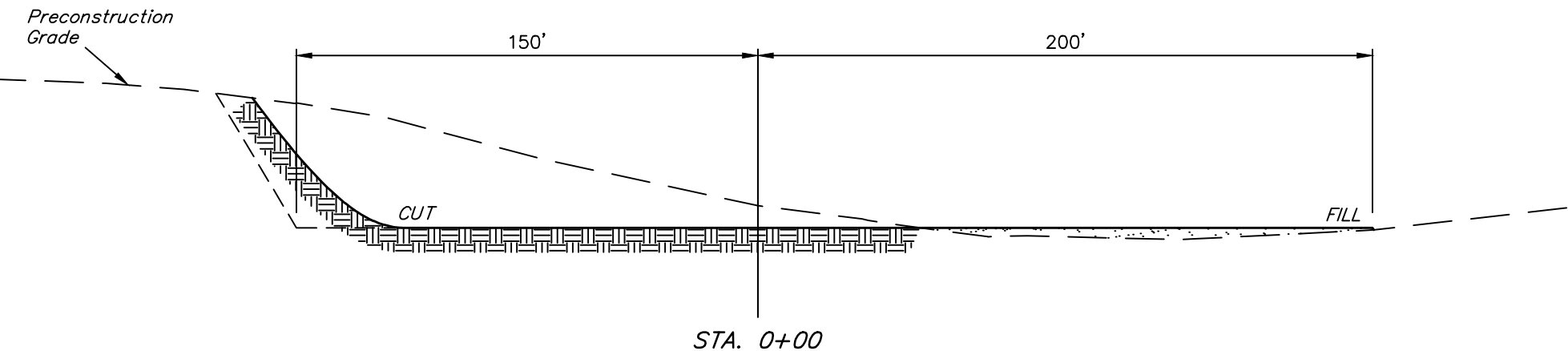
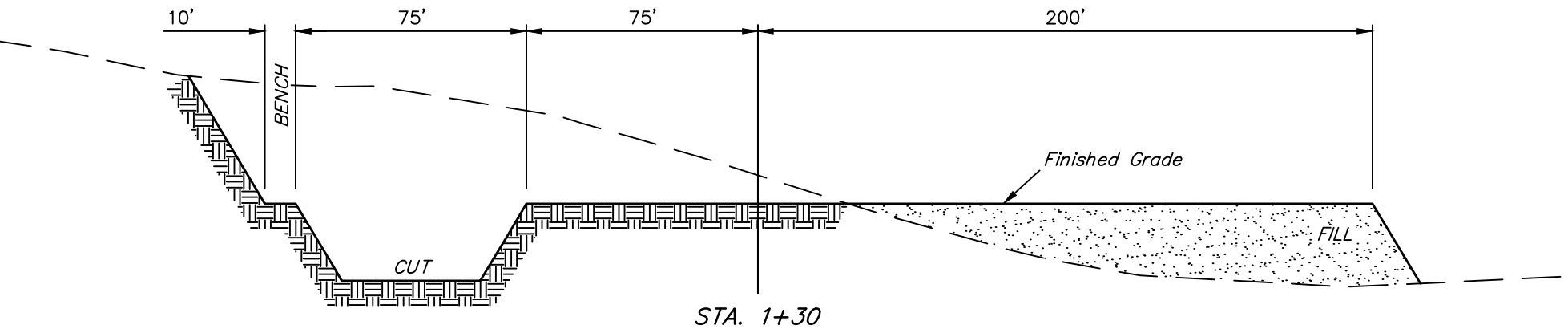
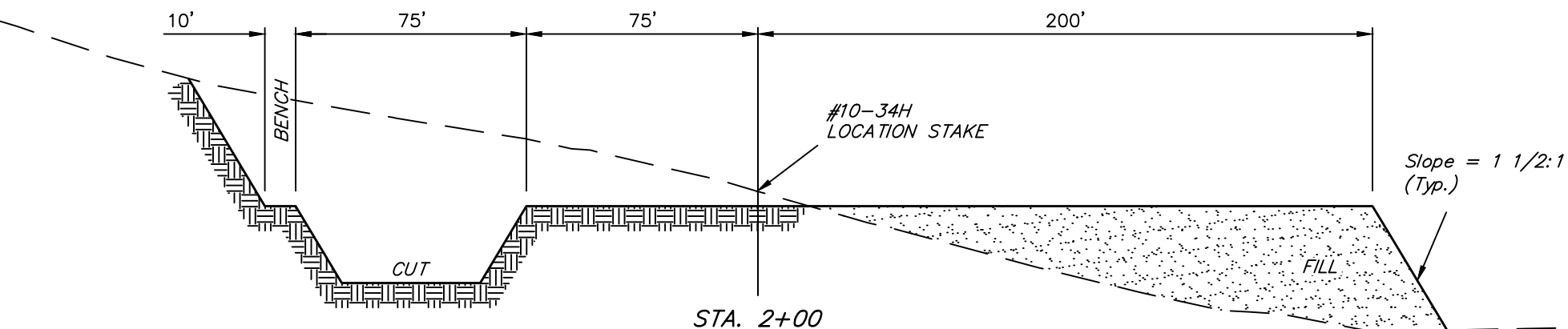
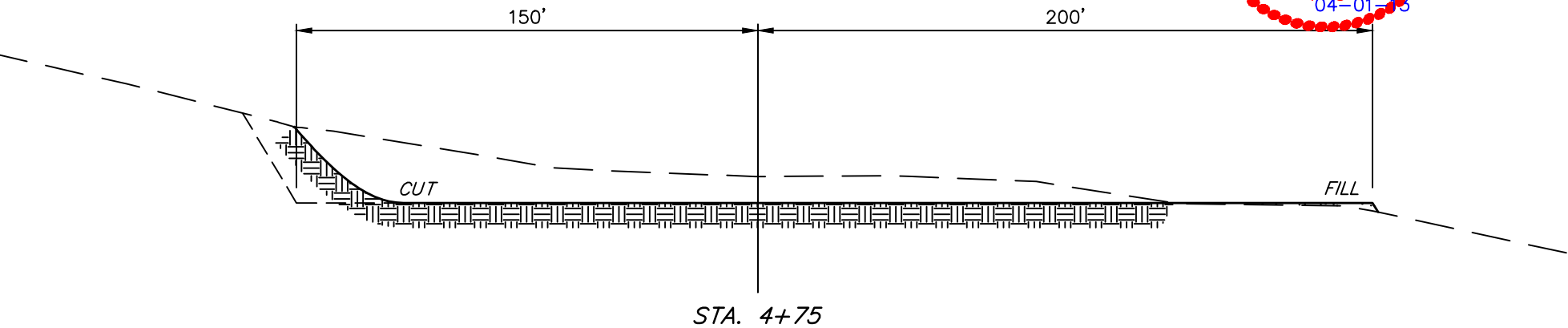
FIGURE #2

1" = 20'
X-Section
Scale
1" = 50'

DATE: 02-19-13

DRAWN BY: T.B.

REVISED: 04-01-13 T.B.



NOTE:

Topsoil should not be Stripped Below Finished Grade on Substructure Area.

* NOTE:

FILL QUANTITY INCLUDES 5% FOR COMPACTION

WELL PAD APPROXIMATE YARDAGES

(6") Topsoil Stripping = 3,550 Cu. Yds.
Remaining Location = 37,180 Cu. Yds.
TOTAL CUT = 40,730 CU. YDS.
FILL = 17,520 CU. YDS.

EXCESS MATERIAL = 23,210 Cu. Yds.
Topsoil & Pit Backfill = 4,510 Cu. Yds.
(1/2 Pit Vol.)
EXCESS UNBALANCE = 18,700 Cu. Yds.
(After Interim Rehabilitation)

WELL PAD APPROXIMATE ACREAGES

WELL SITE DISTURBANCE = ± 5.721 ACRES
ACCESS ROAD DISTURBANCE = ± 10.140 ACRES
TOTAL = ± 15.861 ACRES

UINTAH ENGINEERING & LAND SURVEYING
85 So. 200 East * Vernal, Utah 84078 * (435) 789-1017