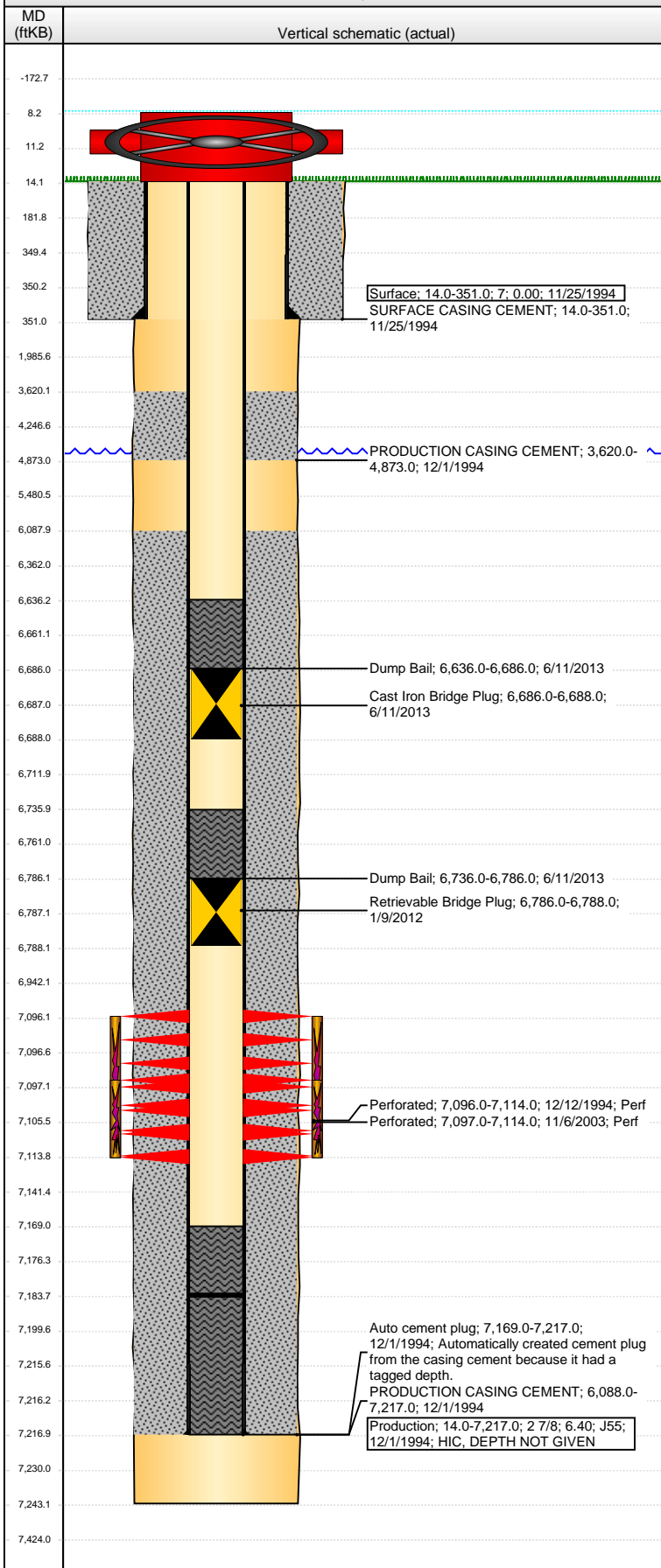


Well Name: TOLLGATE FARMS 29-12G6

VERTICAL - ORIGINAL HOLE, 6/19/2013 1:56:27 PM



Well Header								
API 05-123-18601		Business Unit WATTENBERG		District 15		Well Config VERTICAL		
Original KB Elevation (ft) 4,741.00		KB - GL / MSL (ftKB) 14.00		Spud Date 11/24/1994		P & A Date		
Comment 1/9/2012 - HIC, RBP SET @6786'								
Directions To Well WCR 27 & 64.5, E. 0.1 TO CORNER OF 83RD AVE, E. 30', S. 200', E. 500', N. 300' INTO.								
Congressional Location								
Quarter 1	Quarter 2	Quarter 3 NW	Quarter 4 SW	Section 29	Township 6N	Twnshp N...	Range 66	Rng E/W Dir W
Bottom Hole Location								
North-South Distance (ft)		From N or S Line		East-West Distance (ft)			From E or W Line	
Plug Back Total Depths								
Date	Depth (ftKB)	Method			Com			
12/8/1994	7,169.0	CASED HOLE LOG			DEPTH LOGGER			
11/15/2003	7,147.0	TAG			TAG			
1/6/2012	7,109.0	TBG TAG						
1/6/2012	7,183.9	TAG			C/O, TBG TALLY MEASUREMENT.			
Wellbore Sections								
Section Des			Size (in)		Act Top (ftKB)		Act Btm (ftKB)	
SURFACE			12 1/4		14.0		351.0	
PRODUCTION			7 7/8		351.0		7,243.0	
Zone Statuses								
Zone Name		Status Date		Status		Job		
CODELL		1/23/1995		PR		DRILLING/COMPLETION - ORIGINAL, 11/24/1994 00:00		
CODELL		11/19/2003		PR		RE-FRAC, 11/5/2003 00:00		
CODELL		1/9/2012		SI		TRI-FRAC, 1/5/2012 06:00		
Casing Strings								
Surface, 351.0ftKB								
Casing Description Surface		Run Date 11/25/1994		OD (in) 7	Wt/Len (l...	Grade	Top (ftKB) 14.0	MD (ftKB) 351.0
Production, 7,217.0ftKB								
Casing Description Production		Run Date 12/1/1994		OD (in) 2 7/8	Wt/Len (l...	Grade J55	Top (ftKB) 14.0	MD (ftKB) 7,217.0
Cement								
Description SURFACE CASING CEMENT					Top Depth (ftKB) 14.0		Bottom Depth (ftKB) 351.0	
Description PRODUCTION CASING CEMENT					Top Depth (ftKB) 3,620.0		Bottom Depth (ftKB) 4,873.0	
Description PRODUCTION CASING CEMENT					Top Depth (ftKB) 6,088.0		Bottom Depth (ftKB) 7,217.0	
Description Dump Bail					Top Depth (ftKB) 6,736.0		Bottom Depth (ftKB) 6,786.0	
Description Dump Bail					Top Depth (ftKB) 6,636.0		Bottom Depth (ftKB) 6,686.0	
Tubing Components								
Item Des		OD (in)	Wt (lb/ft)	Grade	Jts	Len (ft)	Btm (ftKB)	Btm (TVD) (ftKB)
Perforation Data								
Zone		Bnch/St g	Entered Shot Total	Top (ftKB)		Btm (ftKB)		Date
CODELL, ORIGINAL HOLE			72	7,096.00		7,114.00		12/12/1994
CODELL, ORIGINAL HOLE			68	7,097.00		7,114.00		11/6/2003
Stimulations & Treatments								
Date 12/15/1994		Zone CODELL, ORIGINAL HOLE			Primary Job Type DRILLING/COMPLETION - ORIGINAL			
Technical Result			Tech Result Details			Tech Result Note		
Comment								
Date 11/12/2003		Zone CODELL, ORIGINAL HOLE			Primary Job Type RE-FRAC			
Technical Result			Tech Result Details			Tech Result Note		
Comment								

Well Name: TOLLGATE FARMS 29-12G6

VERTICAL - ORIGINAL HOLE, 6/19/2013 1:56:28 PM

Other In Hole

Run Date	Des	OD (in)	Top (ftKB)	Btm (ftKB)
1/9/2012	Retrievable Bridge Plug	2.441	6,786.0	6,788.0
6/11/2013	Cast Iron Bridge Plug	2.441	6,686.0	6,688.0

Logs

Date	Type	Top (ftKB)	Btm (ftKB)
12/2/1994	COMPENSATED DENSITY	4,000.0	7,243.0
12/2/1994	INDUCTION	363.0	7,244.0
12/8/1994	ACOUSTIC	3,470.0	7,169.0

