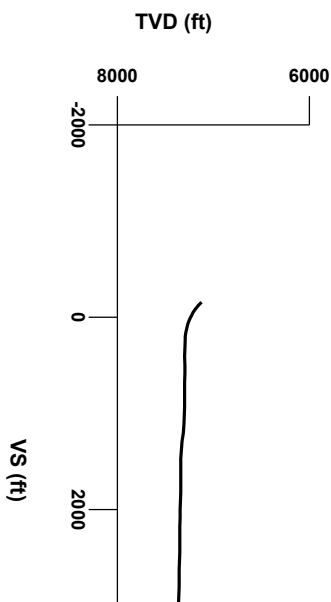




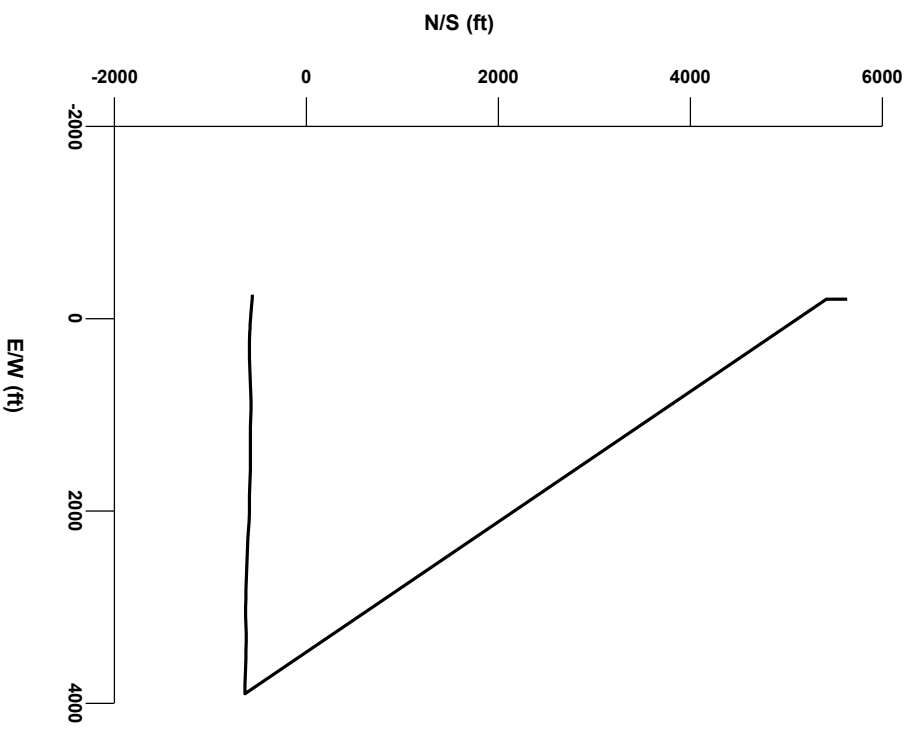
LOG created using LPLOT VH Version 3.0, February 04, 2013, Copyright (C) 1999-2009 Pason Systems Corp.

OPERATOR: NOBLE ENERGY INC
WELL: SEBASTYEN PC 023-63HC
LOCATION: SEC. 23, T4N R67W
COUNTY: WELD
STATE: COLORADO
SPOT: 1,874' FSL, 517' FWL
ELEVATION: GL 4,915'; KB 4,931'
FIELD: WATTENBERG
SPUD DATE: 01/17/2013
TD DATE: 02/01/2013
DATES LOGGED: 01/19/2013 - 02/01/2013
DEPTHS LOGGED: 577' - 11,768'
LOGGERS: PASQUALE DEL VECCHIO, JASON LUBNIEWSKI
DRILLING FLUID: WATER, WATER BASED MUD, POLY
DRILLING RIG: PRECISION 829
API: 05 - 123 - 34684
LOG TYPE: HORIZONTAL
SCALE: 1:240 (5 inches per 100 feet)
REMARKS: IN LITHOLOGIC DESCRIPTIONS; nsfoc = NO SHOW, FLUORESCENCE, ODOR, OR CUT



Survey Elevation

Survey Plan



4000 6000



Chalk

Sandstone

Limestone

Shaly Sandstone

Marl

Silty Shale

ENGINEERING SYMBOLS

Bit Change

Connection

Connection Gas

Midnight Depth

DEPTH (FEET)

7250

60

70

80

90

7300

10

20

30

40

50

SLIDE/ROTATE

0

500

ROP

FT/HR

0

500

GAS

0

6000

UNITS

6000

C1

PPM

600000

C2

PPM

600000

C3

PPM

600000

C4

PPM

600000

C1: 3944.70u

C2: 14.5%

C3: 6.2%

C4: 1.5%

2057u

4270u

5308u

MUD WT: 10.80, VIS 39

CUTTINGS LITHOLOGY

145

65

NIobrara C CHALK@7308' MD, 7163'TVD

TVD

ft

7600

7000

0

AP200

SURVEY

MD 7257'

INC 43.36°

AZI 91.53°

TVD 7125.00'

SURVEY

MD 7302'

INC 48.18°

AZI 92.58°

TVD 7157.00'

SURVEY

MD 7347'

INC 53.47°

AZI 93.85°

TVD 7185.50'

COLUMBINE LOGGING INC.

RIGGED UP ON 1/19/13

MANNED 2-PERSON LOGGING

WITH BLOODHOUND GAS

CHROMATOGRAPH UNIT #0131

75% MRL: moy sl silver gy, firm-brt, sub blk-y -blk-y

occ sb ply, rthy hom txt, m-v calc, sme lt gn flwr, p wht

-bl sting cut, sl od

25% CHK: lt gy-gy, stf, sbrrnd, f grn, chky txt, mot lp,

argill, v calc,

65% rthy,

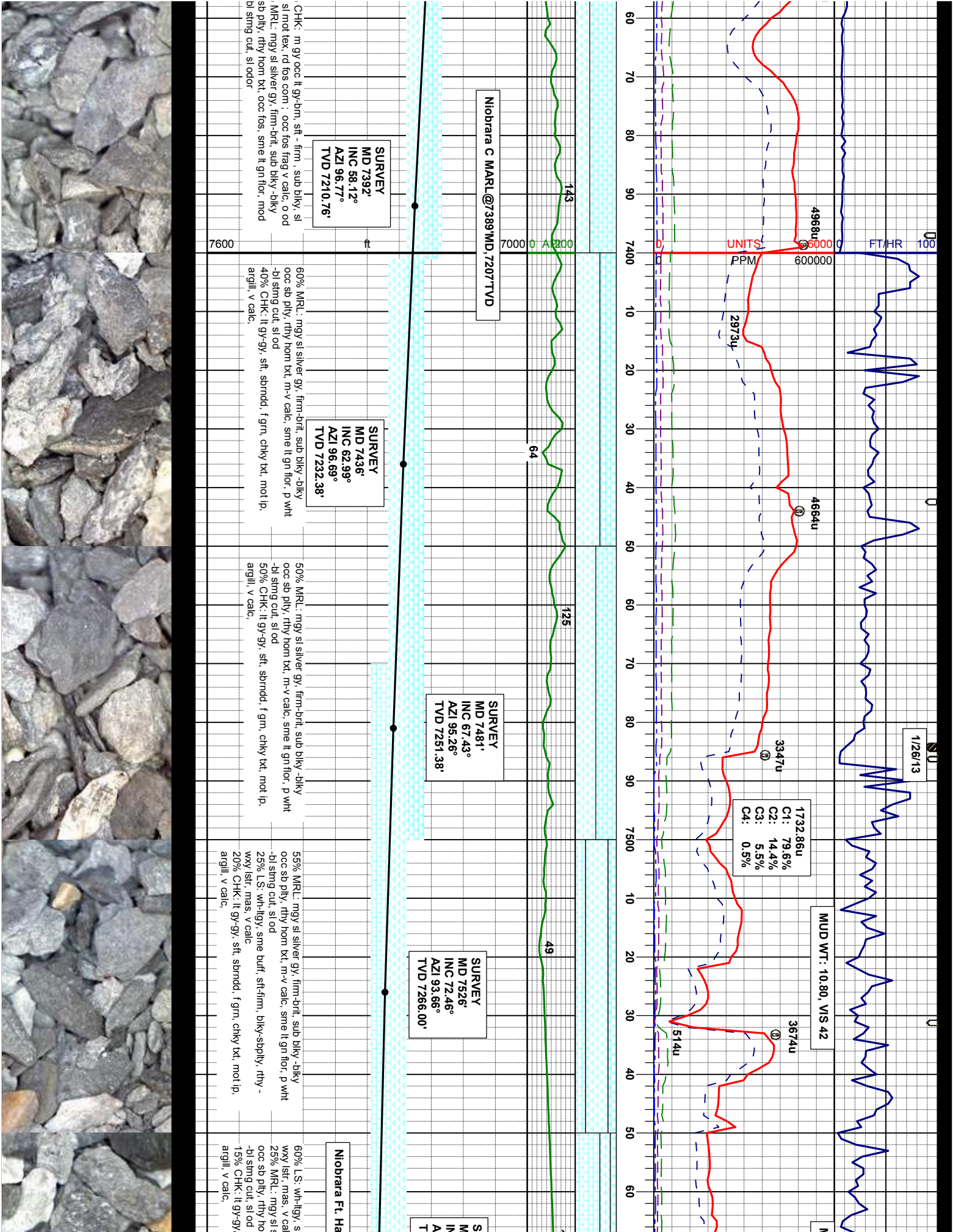
35% occ:

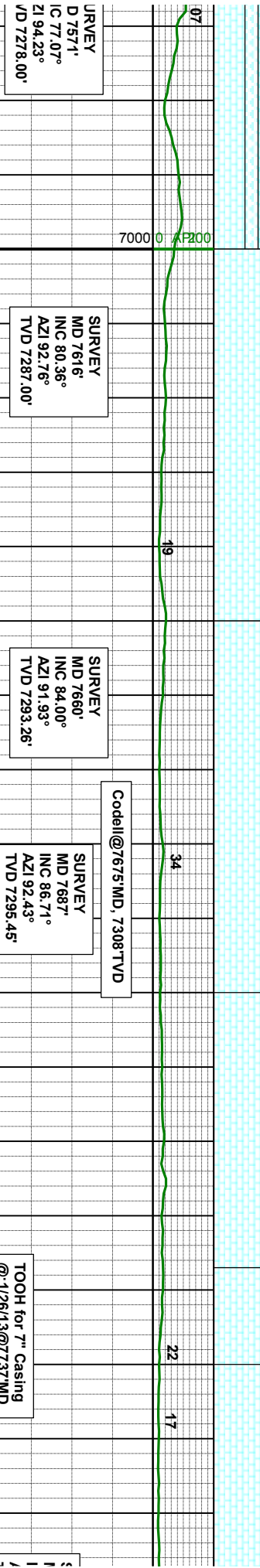
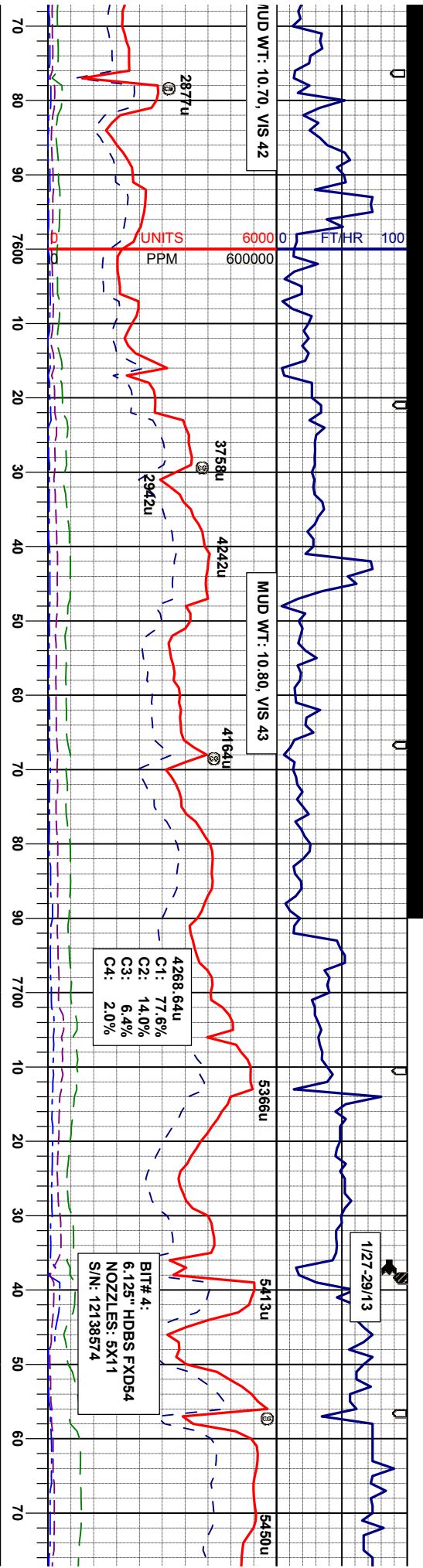
wht-

OIL SHOW

T F G

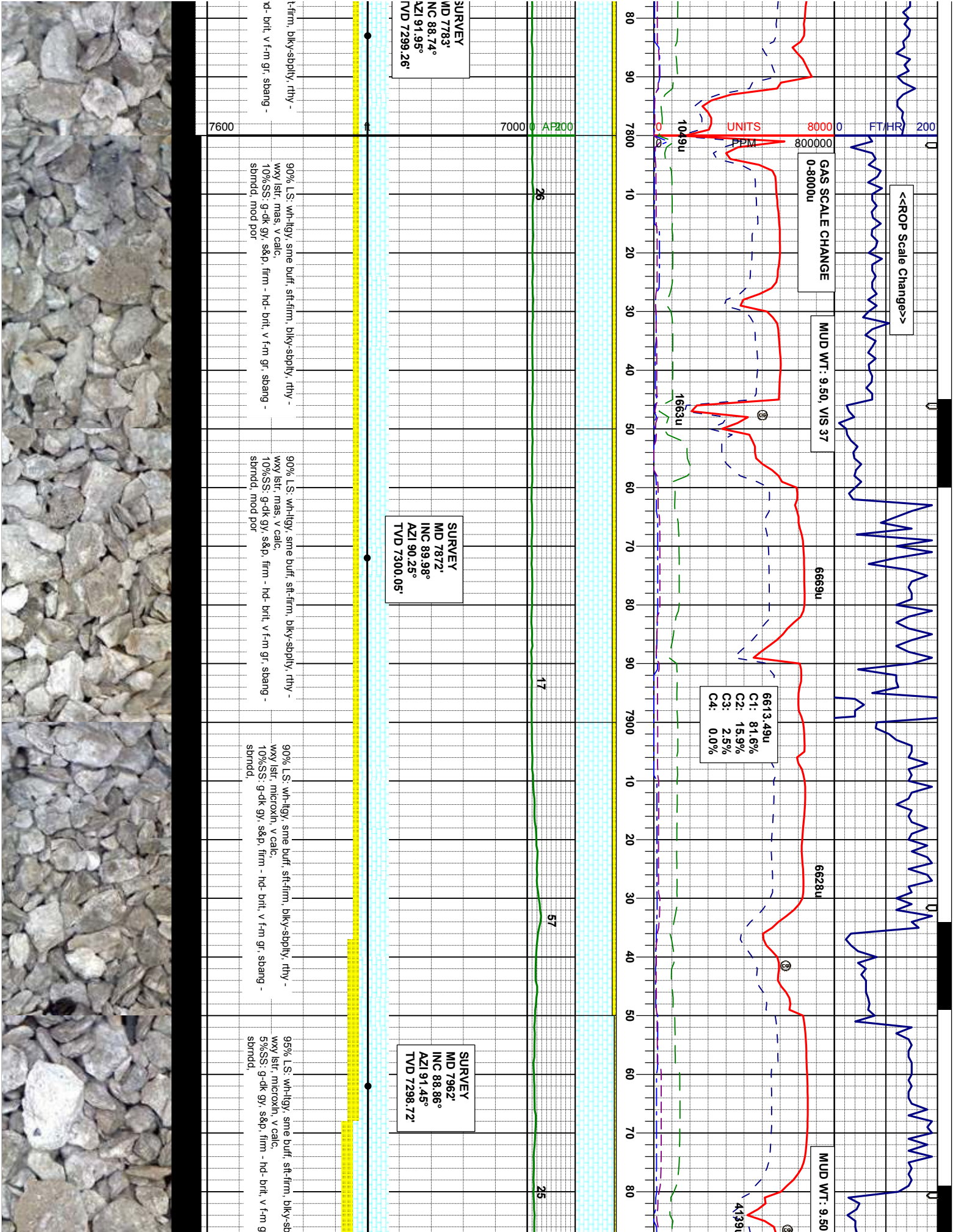
SAMPLE PHOTOS

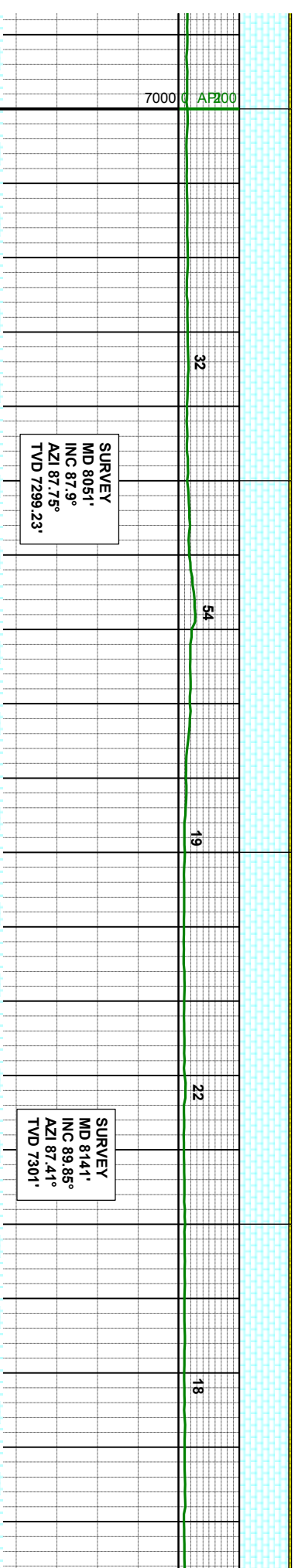
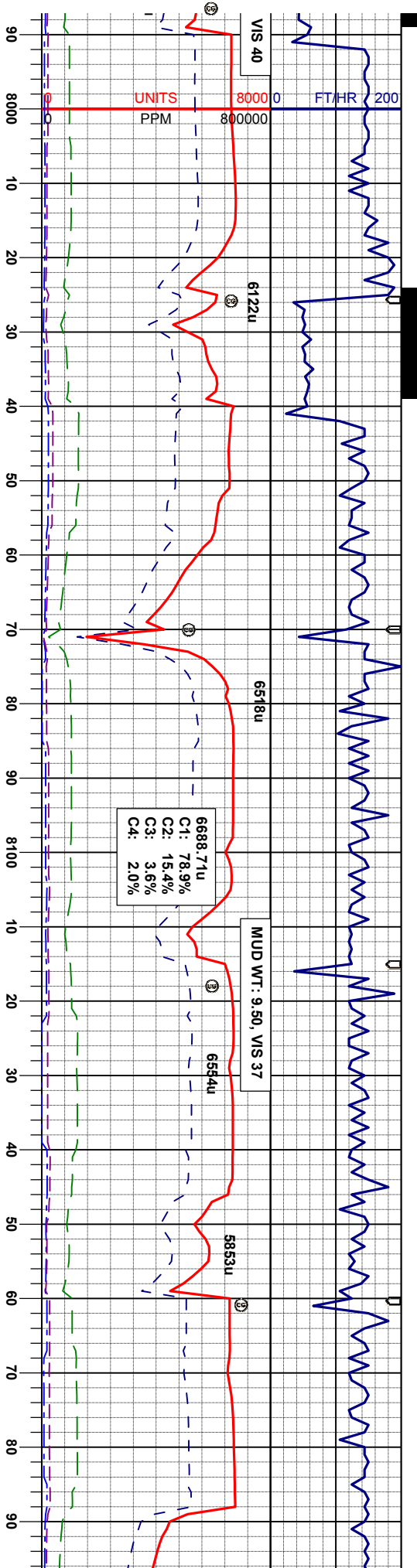




yes@7518 MD, 7264 TVD	90% L.S.: wh-lgy, sme buff, sft-firm, biky-sply, rthy - wxy lst, mas, v calc	90% L.S.: wh-lgy, sme buff, sft-firm, biky-sply, rthy - wxy lst, mas, v calc	90% L.S.: wh-lgy, sme buff, sft-firm, biky-sply, rthy - wxy lst, mas, v calc
	10% MFL: mgy sl silvry gy, firm-brtl, sub biky - biky occ sb ply, rthy nom txt, m-v calc, sme lt gn flcr, p wht -d-sing cut, sl od	100% L.S.: wh-lgy, sme buff, sft-firm, biky-sply, rthy - wxy lst, mas, v calc	90% L.S.: wh-lgy, sme buff, sft-firm, biky-sply, rthy - wxy lst, mas, v calc, 10%SS: g-dk gy, s&p, firm - hd- brtl, v f-m gr, sbang - shrnd, mod por
			90% L.S.: wh-lgy, sme buff, sft-firm, biky-sply, rthy - wxy lst, mas, v calc, 10%SS: g-dk gy, s&p, firm - l shrnd, mod por

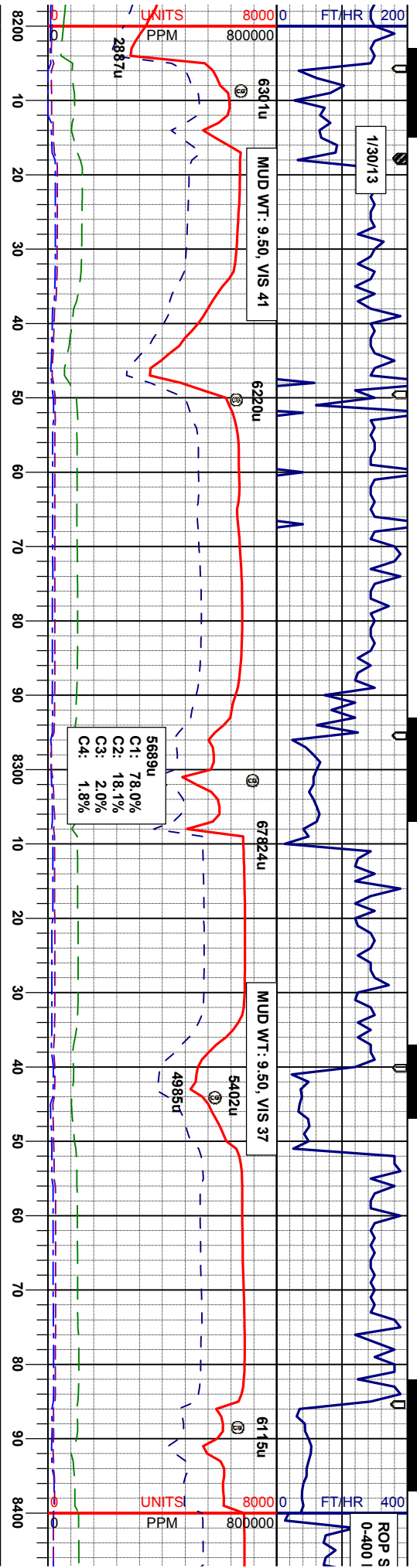






ply, rthy -	95% LS: wh-igy, sme bufi, stf-firm, bky-sbply, rthy - wxy lstr, microxn, v calc, n flor	95% LS: wh-igy, sme bufi, stf - firm, bky-sbply, rthy - wxy lstr, microxn, v calc.	95% LS: wh-igy, sme bufi, stf - firm, bky-sbply, rthy - wxy lstr, microxn, v calc.
g, sbang -	5%SS: g-dk gy, s&p, firm - hd- brt, v f-m gr, sbang - sbmdd,	5%SS: g-dk gy, s&p, firm - hd- brt, v f-m gr, sbang - sbmdd,	5%SS: g-dk gy, s&p, firm - hd- brt, v f-m gr, sbang - sbmdd,





SURVEY
MD 8231'
INC 90.37°
AZI 87.59°
TVD 7300.8'

SURVEY
MD 8320'
INC 89.97°
AZI 87.58°
TVD 7300.56'

SU
MT
INC
AZ
TV

100% L.S. lt. gy - dk gy, sme buff, sft - firm, biky-spply,
rthy - wxy lstf, microxin, v calc, rr gn flor

100% L.S. lt. gy - dk gy, sme buff, sft - firm, biky-spply,
rthy - wxy lstf, microxin, v calc, rr gn flor

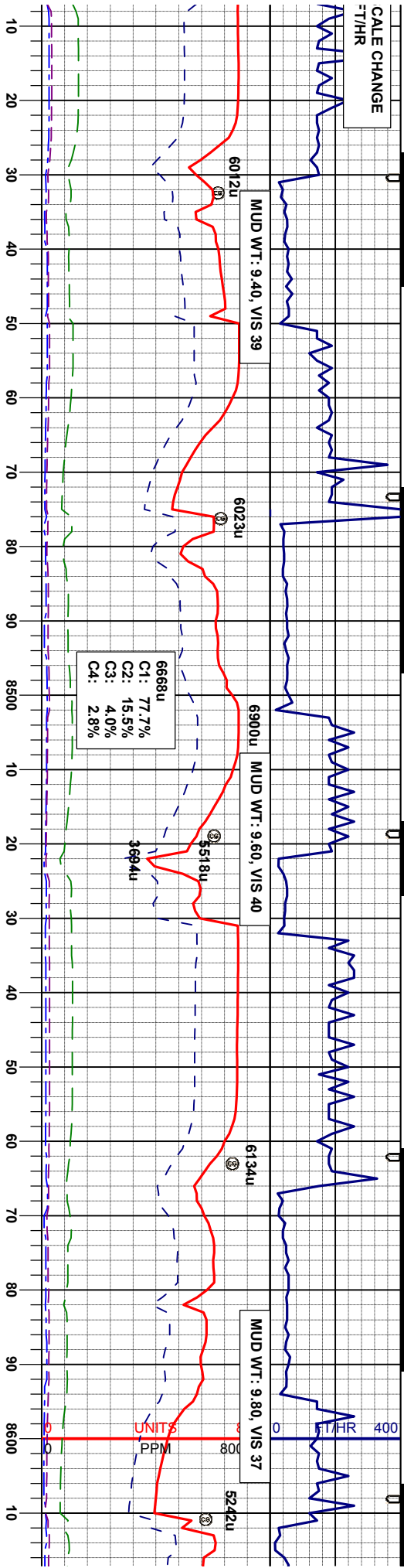
100% L.S. lt. gy - dk gy, sme buff, sft - firm, biky-spply,
rthy - wxy lstf, microxin, v calc, rr gn flor

100% L.S. lt. gy - dk gy, sme buff, sft - firm, biky-spply,
rthy - wxy lstf, microxin, v calc, rr gn flor

100
rthy



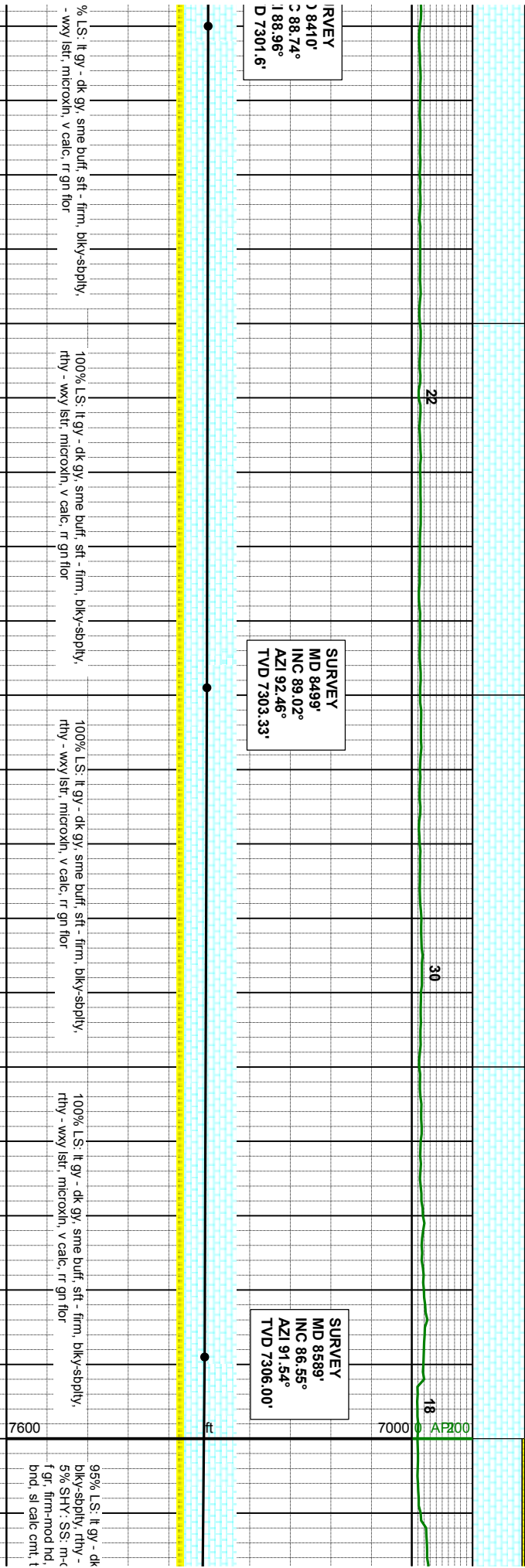
SCALE CHANGE
FT/HR

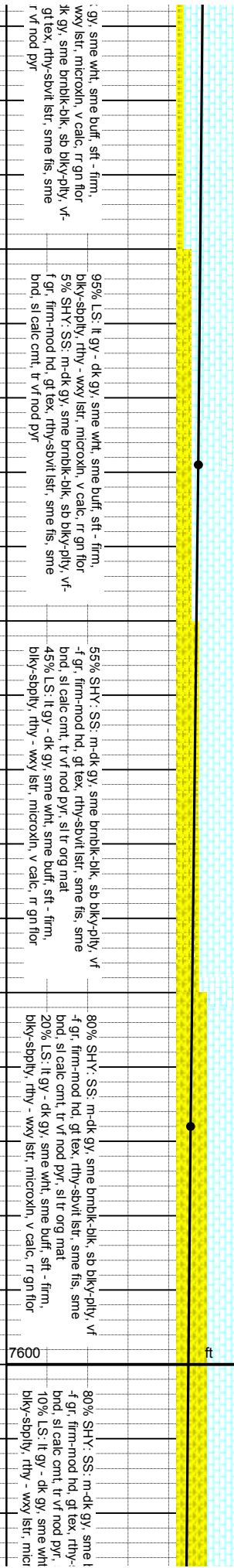
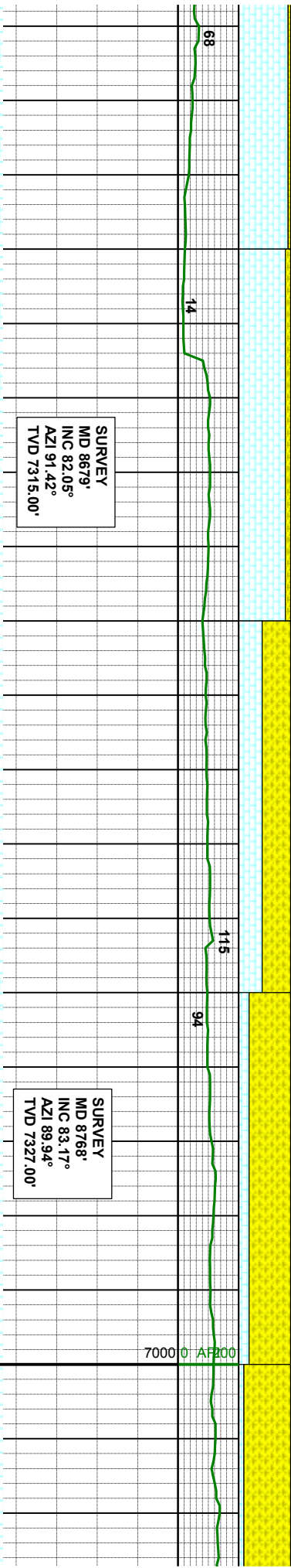
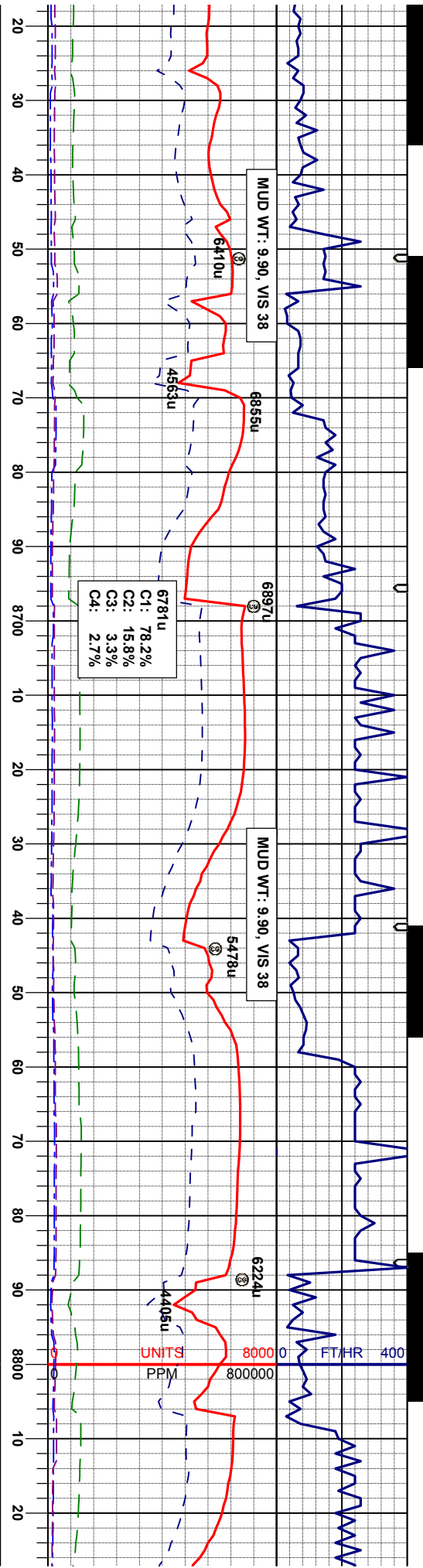


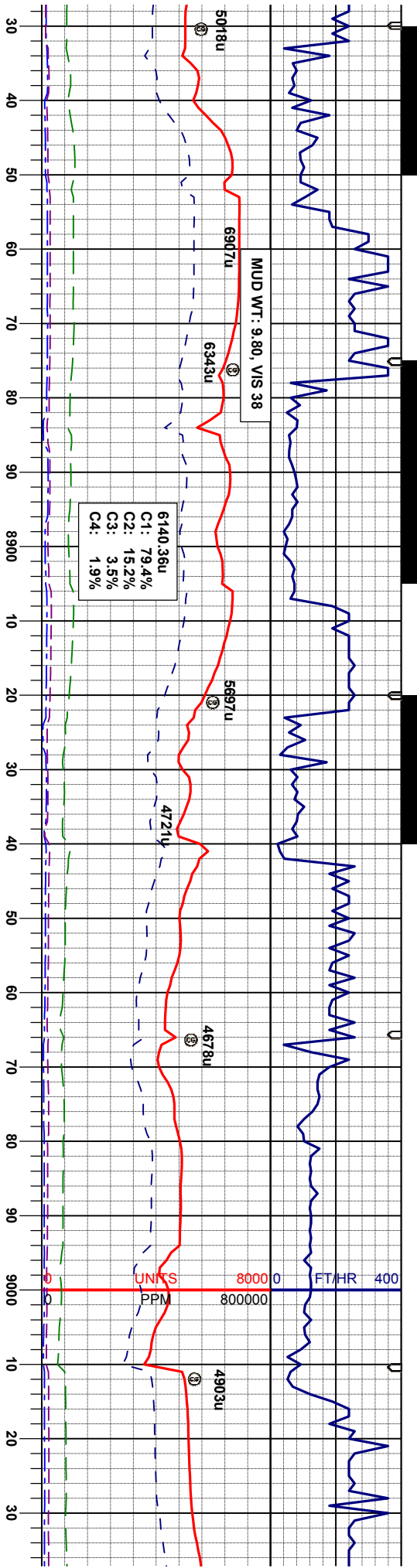
RYEY
J 8410°
C 88.74°
I 88.96°
D 7301.6'

SURVEY
MD 8499°
INC 89.02°
AZI 92.46°
TVD 7303.33'

SURVEY
MD 8589°
INC 86.55°
AZI 91.54°
TVD 7306.00'







SURVEY
MD 8858'
INC 85.25°
AZI 89.15°
TVD 7336.00'

SURVEY
MD 8947'
INC 89.23°
AZI 90.35°
TVD 7340.00'

SURVEY
MD 9037'
INC 89.8°
AZI 89.7°
TVD 7340.00'

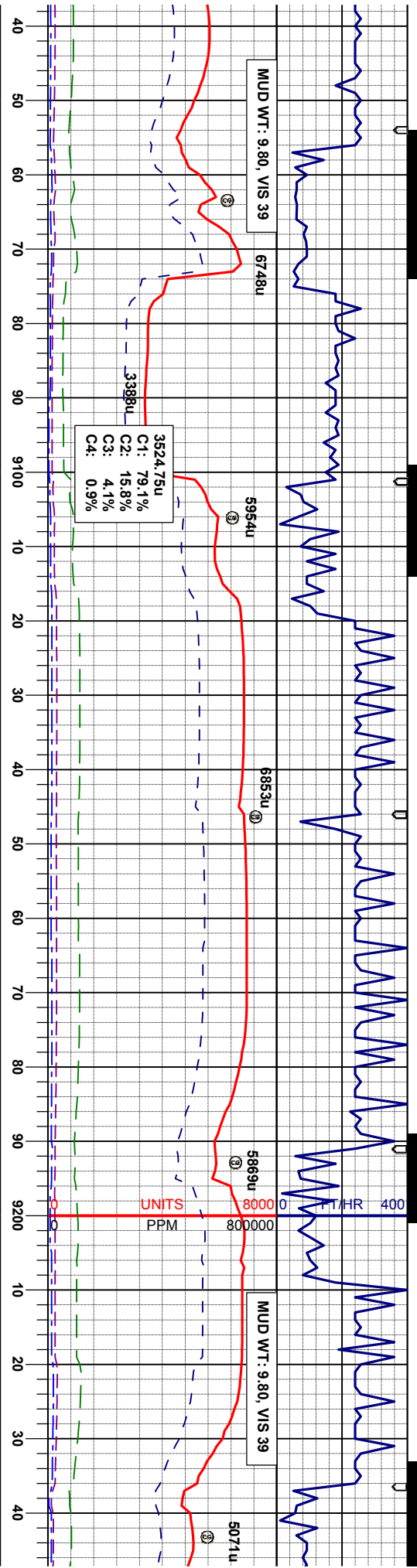
90% SHY: SS: m-dk gy, sme brmbk-bk, sb bkly-pily, vf
-f gr, firm-mod hd, gt tex, rthy-sbvt lstr, sme fis, sme
bnd, sl calc cnt, sl tr org mat
5% LS: lt gy - dk gy, sme wht, sme buff, sft - firm,
cpxl, bkly-sbply, rthy - wxy lstr, v calc, r gr flr
5% SLTY: SH: dkgy-bk, sme brmbk, vsft-firm, vf-sbvis
gr, pily-sbply, rthy lstr, gt tex, sl calc, arg cnt

100% SHY: SS: m-dk gy, sme brmbk-bk, sb bkly-pily,
vf-f gr, firm-mod hd, gt tex, rthy-sbvt lstr, sme fis, sme
bnd, sl calc cnt, sl tr org mat
tr LS: lt gy - dk gy, sme wht, sme buff, sft - firm, cppl,
bkly-sbply, rthy - wxy lstr, v calc, r gr flr
tr SLTY: SH: dkgy-bk, sme brmbk, vsft-firm, vf-sbvis
gr, pily-sbply, rthy lstr, gt tex, sl calc, arg cnt

90% SHY: SS: m-dk gy, sme brmbk-bk, sb bkly-pily, vf
-f gr, firm-mod hd, gt tex, rthy-sbvt lstr, sme fis, sme
bnd, sl calc cnt, sl tr org mat
10% LS: lt gy - dk gy, sme wht, sme buff, sft - firm,
cppl, bkly-sbply, rthy - wxy lstr, v calc, r gr flr

95% SHY: SS: m-dk gy, sme brmbk-bk, sb
-f gr, firm-mod hd, gt tex, rthy-sbvt lstr, sme
bnd, sl calc cnt, sl tr org mat
5% LS: lt gy - dk gy, sme wht, sme buff, sft -
cppl, bkly-sbply, rthy - wxy lstr, v calc, r gr





8°

0°

1.00'

SURVEY

MD 9127'

INC 90.52°

AZI 92.18°

TVD 7340.94'

SURVEY

MD 9216'

INC 90.00°

AZI 92.51°

TVD 7340.53'

95% SHY: SS: m-dk gy, sme brnblk-blk, sb biky-pty, vf f-gy, firm-mod hd, gt tex, rthy-sbvt lstr, sme fis, sme bnd, sl calc cnt, sl tr org mat

5% LS: lt gy - dk gy, sme wht, sme buff, sft - firm, crpxl, biky-sbply, rthy - wxy lstr, v calc, r gn flr

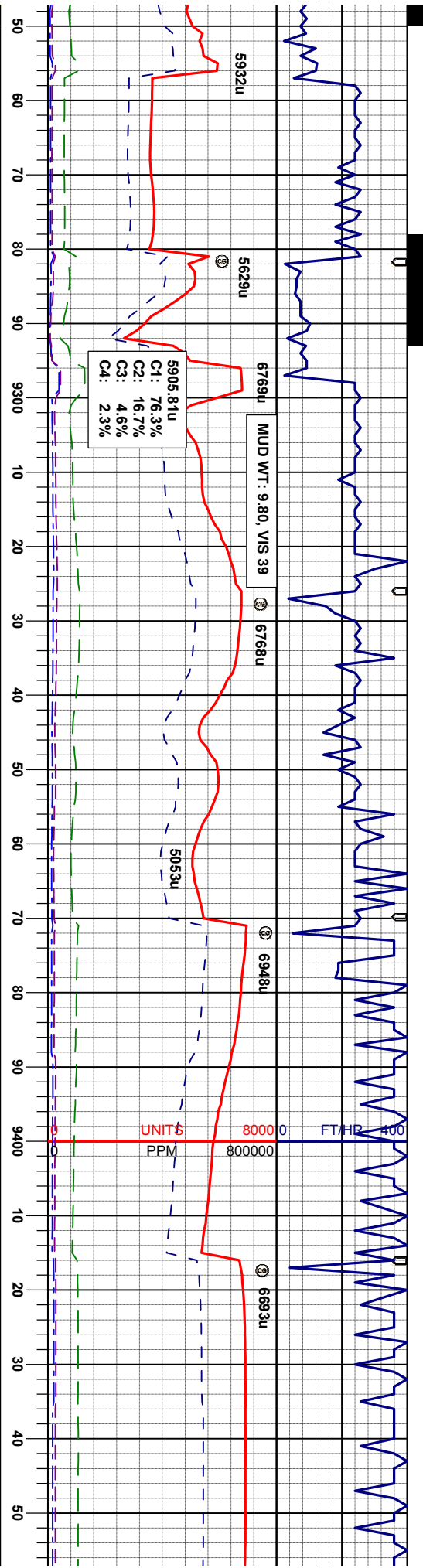
95% SHY: SS: m-dk gy, sme brnblk-blk, sb biky-pty, vf f-gy, firm-mod hd, gt tex, rthy-sbvt lstr, sme fis, sme bnd, sl calc cnt, sl tr org mat

5% LS: lt gy - dk gy, sme wht, sme buff, sft - firm, crpxl, biky-sbply, rthy - wxy lstr, v calc, r gn flr

95% SHY: SS: m-dk gy, sme brnblk-blk, sb biky-biky, vf f-gy, firm-mod hd, gt tex, rthy-sbvt lstr, sme bnd, sl calc cnt, sl tr org mat

5% LS: lt gy - dk gy, sme wht, sme buff, sft - firm, crpxl, biky-sbply, rthy - wxy lstr, v calc, r gn flr





SURVEY
MD 9306'
INC 87.38°
AZI 91.0°
TVD 7342.59'

SURVEY
MD 9396'
INC 88.34°
AZI 90.94°
TVD 7345.95'

100% SHY: SS: m-dk gy, sme brnblk-blk, sb blk-y-bkly,
vf-f gr, firm-mod hd, gt tex, rthy-svvt lst, sme brd, sl
calc cnt, sl tr org mat

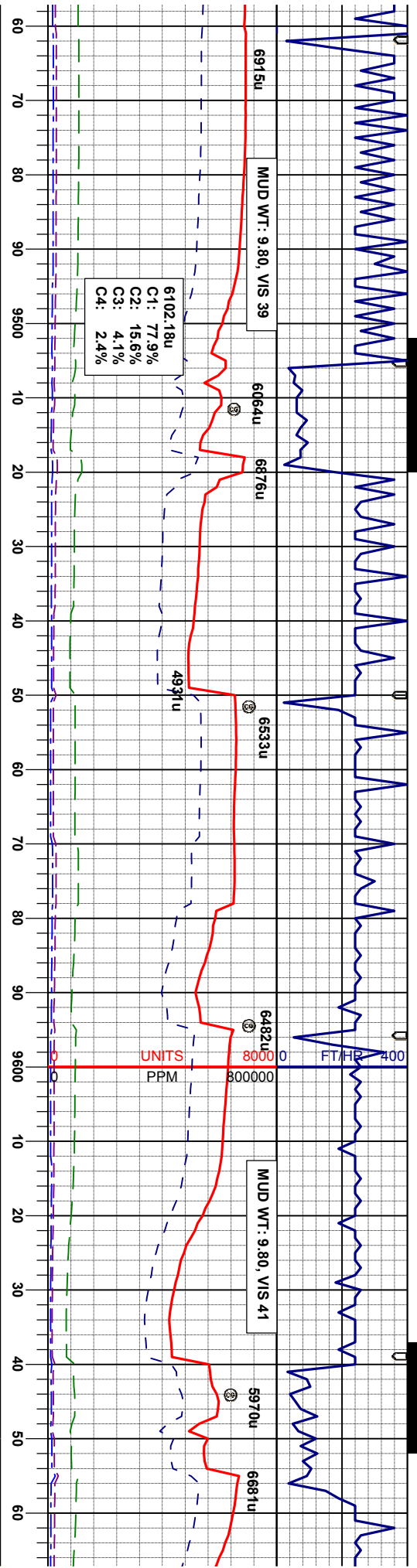
100% SHY: SS: m-dk gy, sme brnblk-blk, sb blk-y-bkly,
vf-f gr, firm-mod hd, gt tex, rthy-svvt lst, sme brd, sl
calc cnt, sl tr org mat

95% SHY: SS: m-dk gy, sme brnblk-blk, sb blk-y-bkly,
vf-f gr, firm-mod hd, gt tex, rthy-svvt lst, sme brd, sl
calc cnt, sl tr org mat
5% LS: lt gy - dk gy, sme wht, sme buff, st - firm,
cpxl, blk-y-splly, rthy - wxy lst, microxn, v calc, rr gn
flor

100% SHY: SS: m-dk gy, sme brnblk-blk, sb blk-y-bkly,
vf-f gr, firm-mod hd, gt tex, rthy-svvt lst, sme brd, sl
calc cnt, sl tr org mat

95% S
vf-f gr,
calc cr
5% LS
cpxl, t





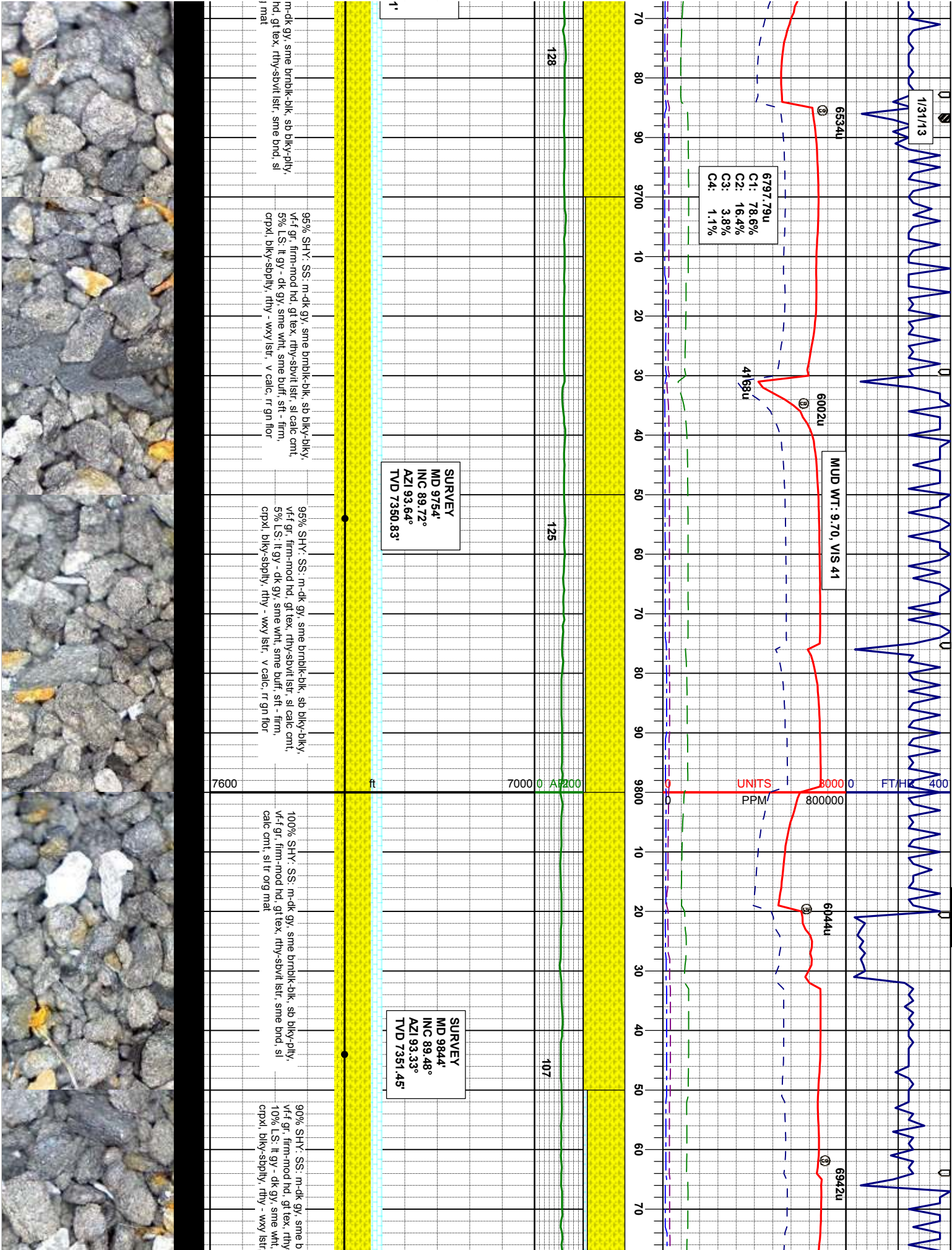
SURVEY
MD 9485'
INC 89.38°
AZI 90.27°
TVD 7347.72'

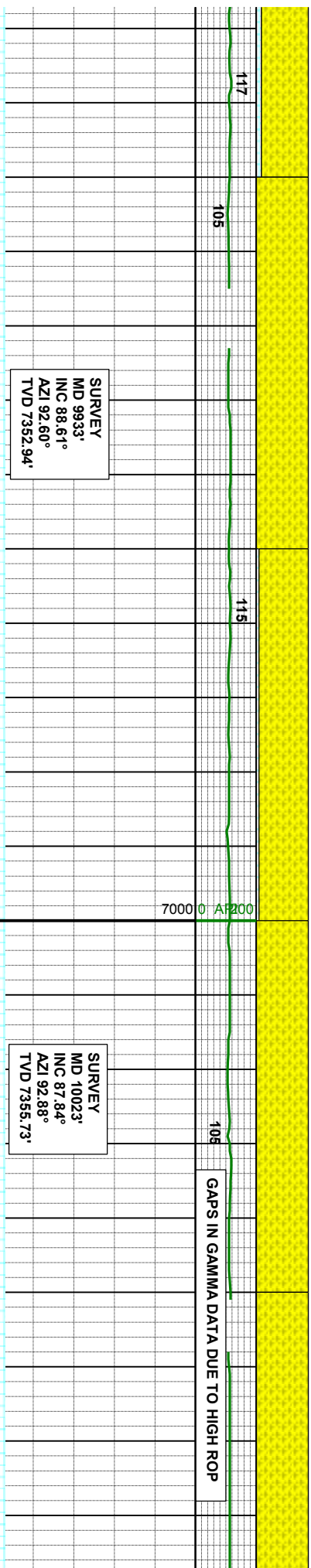
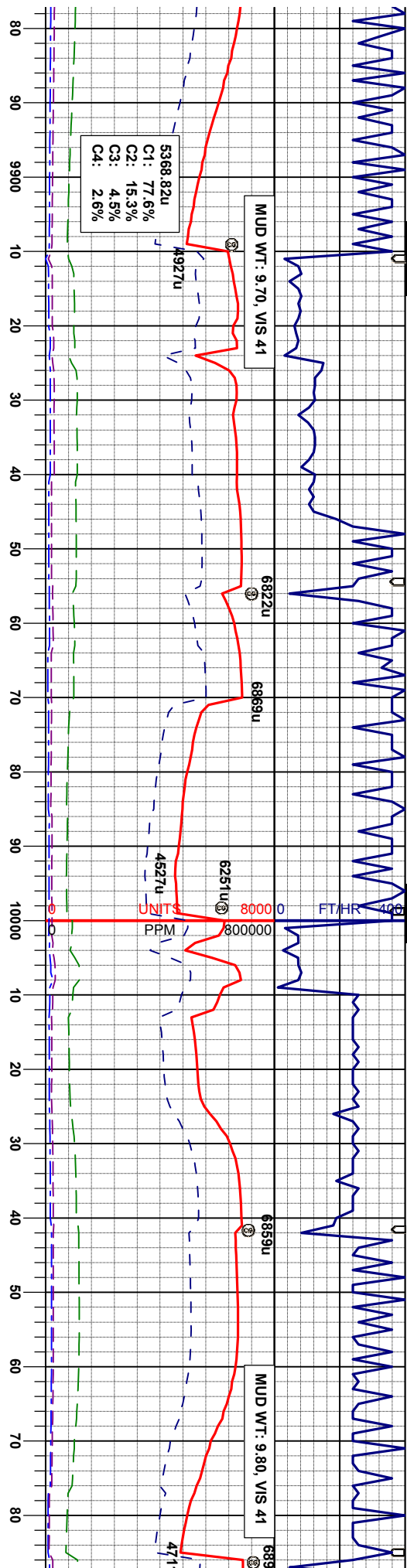
SURVEY
MD 9575'
INC 89.11°
AZI 91.39°
TVD 7348.91'

SURVEY
MD 9664'
INC 89.35°
AZI 92.70°
TVD 7350.

HY: SS: m-dk gy, sme brnblk-blk, sb blk-y-bkly, firm-mod hd, gt tex, rthy-svyl istr, sme bnd, sl mt, sl tr org mat
100% SHY: SS: m-dk gy, sme brnblk-blk, sb blk-y-bkly, vf-f gr, firm-mod hd, gt tex, rthy-svyl istr, sme bnd, sl calc cntl, sl tr org mat
100% SHY: SS: m-dk gy, sme brnblk-blk, sb blk-y-bkly, vf-f gr, firm-mod hd, gt tex, rthy-svyl istr, sme bnd, sl calc cntl, sl tr org mat
100% SHY: SS: m-dk gy, sme brnblk-blk, sb blk-y-bkly, vf-f gr, firm-mod hd, gt tex, rthy-svyl istr, sme bnd, sl calc cntl, sl tr org mat







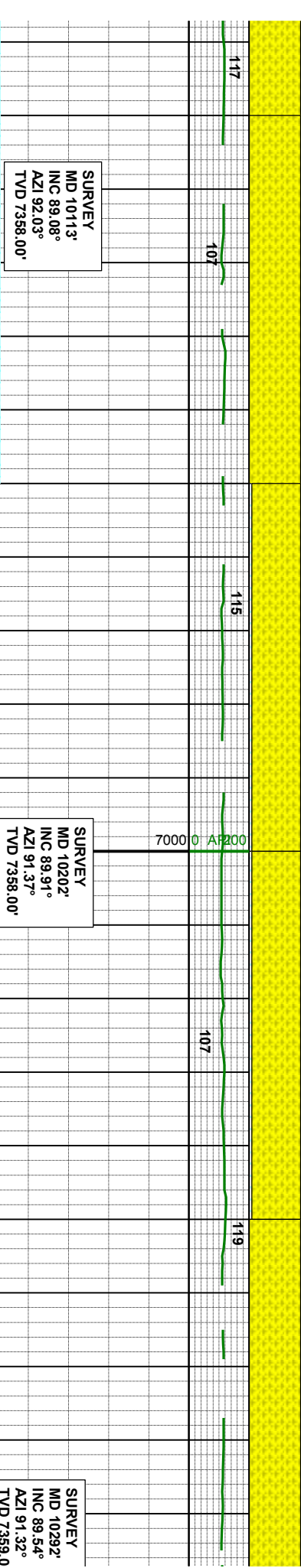
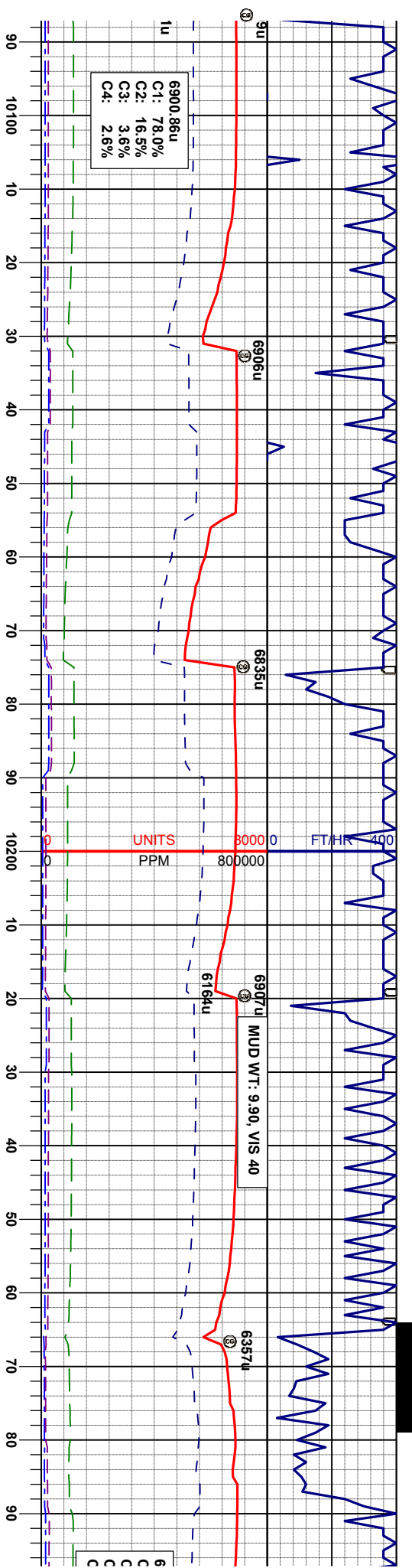
rnblk-blk, sb blk-y-blky,
sbvit lstr, sl calc cm't,
sme buff, sft - firm,
v calc, rr gn flor

100% SHY: SS: m-dk gy, sme brnblk-blk, sb blk-y-pty,
vf-f gr, firm-mod hd, gt tex, rthy-sbvit lstr, sme brd, sl
calc cmt, sl tr org mat

95% SHY: SS- m-dk gy, sme brmbk-blk, sb blyk-blyk, vy-f-gf, firm-moed hd, gf tex, rthy-sbvt lst, sl calc cmt, 5% LS: lt gy - dk gy, sme wht, sme buff, sft - firm, cprxl, blyk-sbply, rthy - wxy lst, v calc, r gn flr

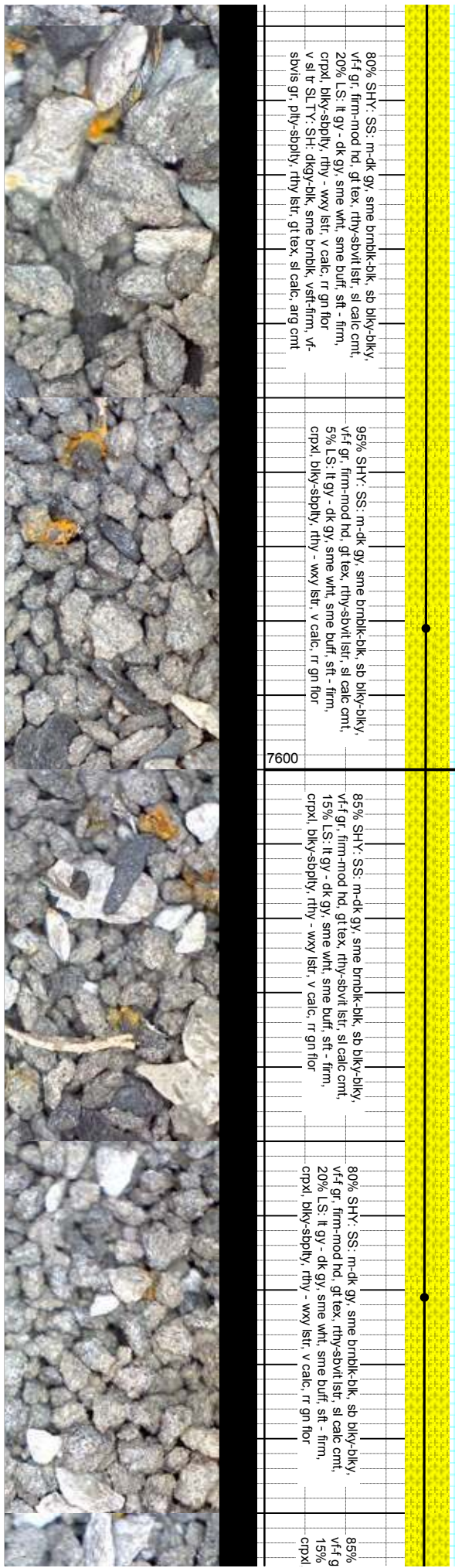
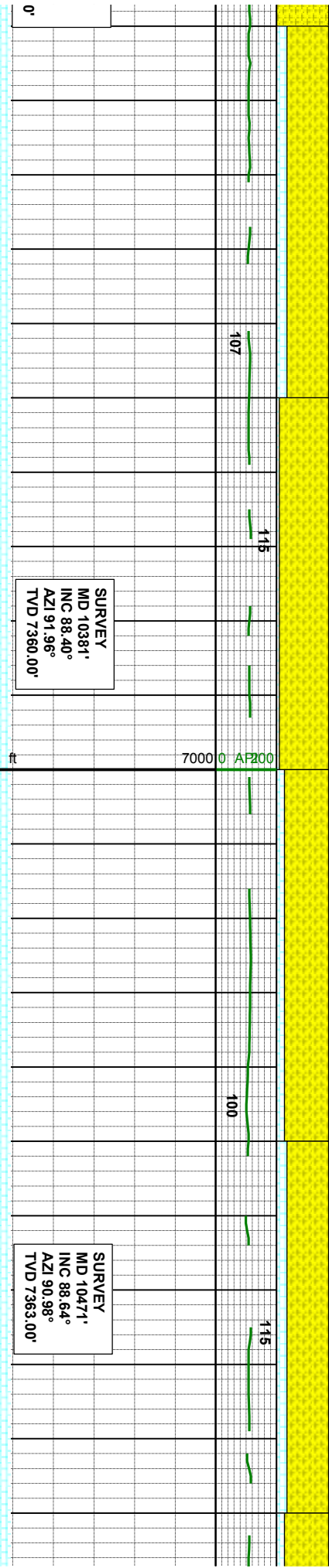
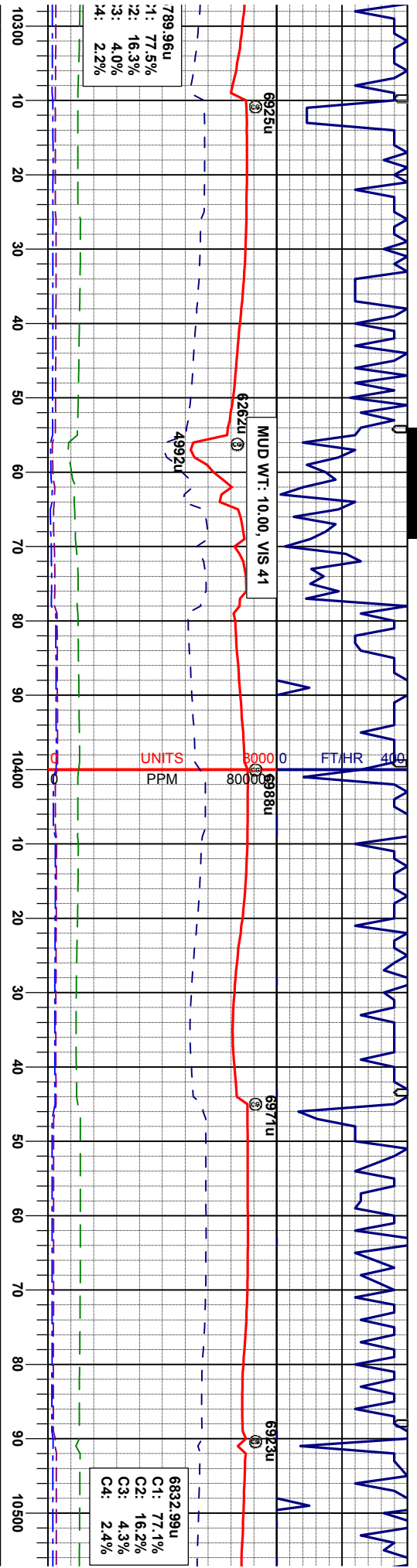
100% SHY: SS, m-dk gy, sme dmbdk-bik, sb bky-biky, v-f4 gr, firm-mod hd, gf tex, rthy-sbvit lstr, sl calc cnt, tr LS, lt gy -dk gy, sme wht, sme buff, st-firm, crpxl, bky-sbply, rthy - wxy lstr, v calc, rr gr flor

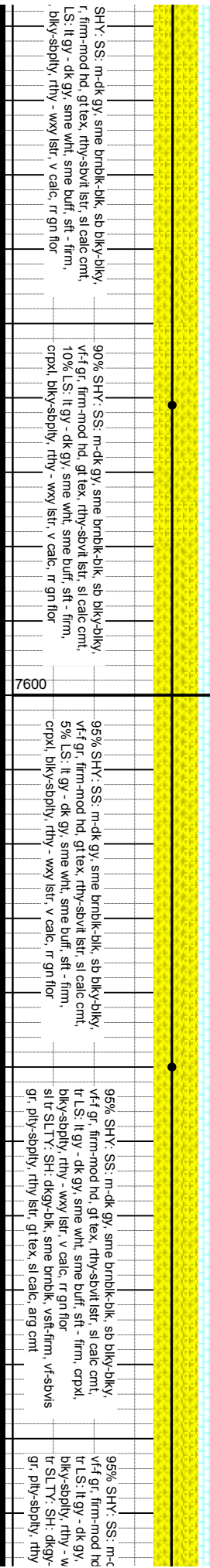
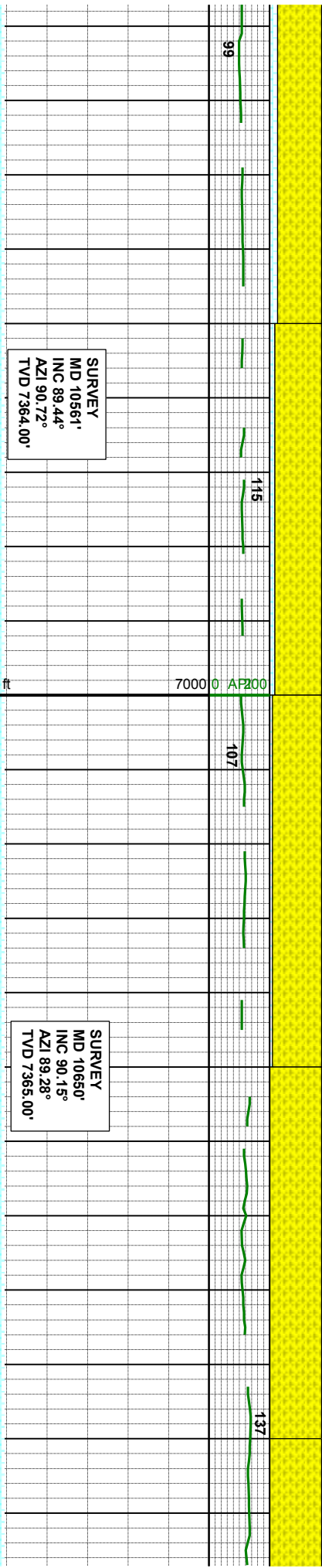
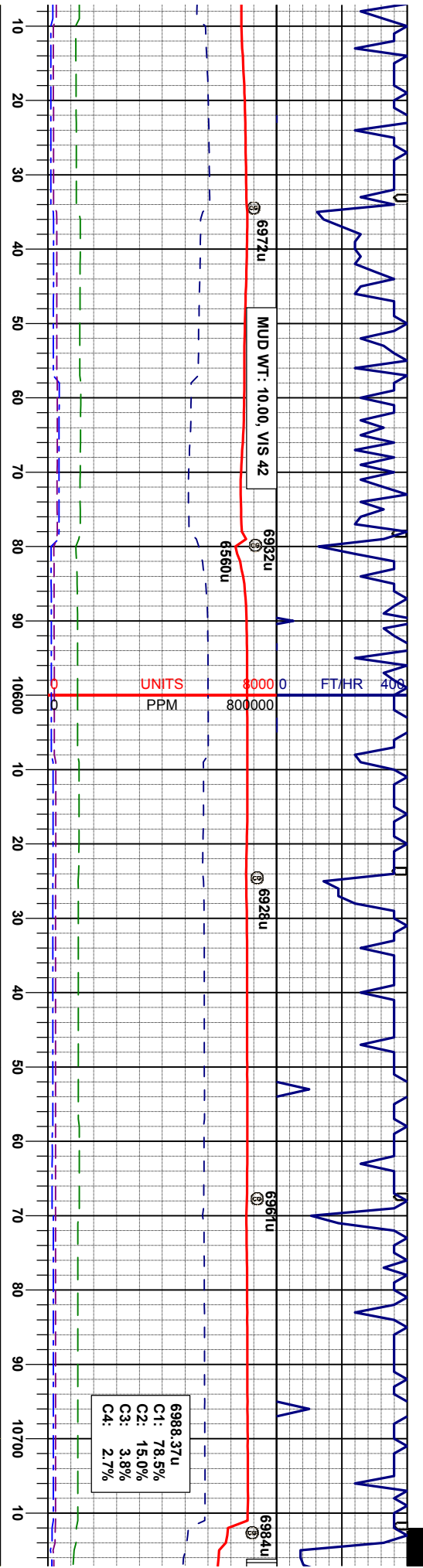
100% SHY: SS: m-dk gy, sme brnblk-blk, s
vf-gr, firm-mod hd, gt ex, rthy-sbvt lstr, s
sl tr LS: lt gy - dk gy, sme wht, sme buff, sf
crpxl, blkly-sbply, rthy - wxy lstr. v calc. rr g

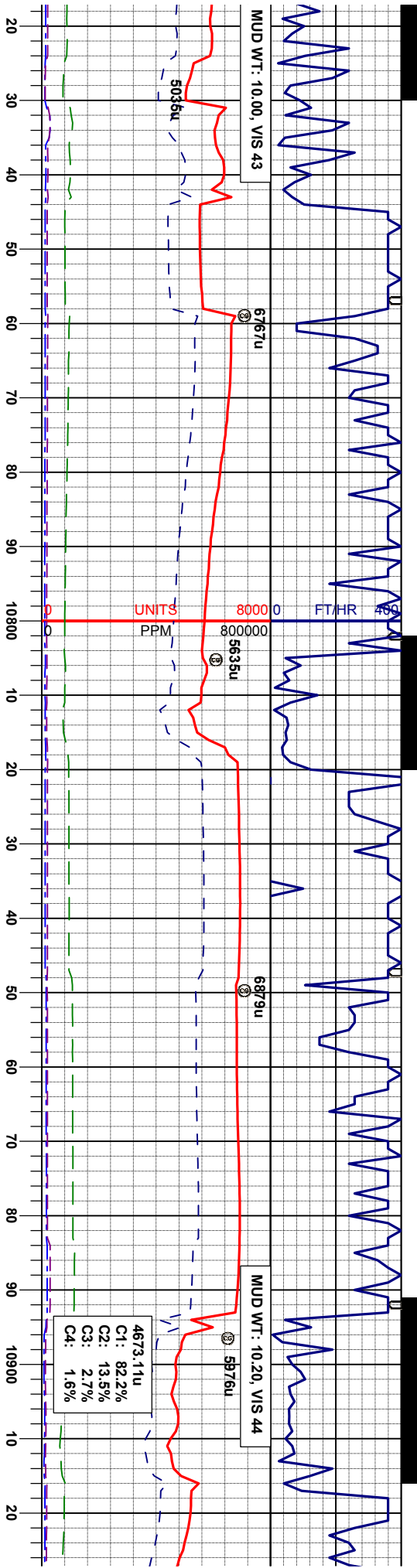


<p>100% SHY: SS, m-dk gy, sme brnblk-blk, sb blk-y-bkly, v-f gr, firm-mod hd, gt tex, rthy-sbvlt lstr, sl calc cnt, v sl tr LS: lt gy - dk gy, sme wht, sme buff, sft - firm, cpplx, blk-y-sbply, rthy - wxy lstr, v calc, r gr flr tr SLTY: SH: dkgy-blk, sme brnblk, vsft-firm, v-fsbvis gr, ply-sbply, rthy lstr, gt tex, sl calc, arg cnt</p>	<p>95% SHY: SS, m-dk gy, sme brnblk-blk, sb blk-y-bkly, v-f gr, firm-mod hd, gt tex, rthy-sbvlt lstr, sl calc cnt, 5% LS: lt gy - dk gy, sme wht, sme buff, sft - firm, cpplx, blk-y-sbply, rthy - wxy lstr, v calc, r gr flr sl tr SLTY: SH: dkgy-blk, sme brnblk, vsft-firm, v-fsbvis gr, ply-sbply, rthy lstr, gt tex, sl calc, arg cnt</p>	<p>95% SHY: SS, m-dk gy, sme brnblk-blk, sb blk-y-bkly, v-f gr, firm-mod hd, gt tex, rthy-sbvlt lstr, sl calc cnt, 5% LS: lt gy - dk gy, sme wht, sme buff, sft - firm, cpplx, blk-y-sbply, rthy - wxy lstr, v calc, r gr flr sl tr SLTY: SH: dkgy-blk, sme brnblk, vsft-firm, v-fsbvis gr, ply-sbply, rthy lstr, gt tex, sl calc, arg cnt</p>	<p>95% SHY: SS, m-dk gy, sme brnblk-blk, sb blk-y-bkly, v-f gr, firm-mod hd, gt tex, rthy-sbvlt lstr, sl calc cnt, tr LS: lt gy - dk gy, sme wht, sme buff, sft - firm, cpplx, blk-y-sbply, rthy - wxy lstr, v calc, r gr flr v sl tr SLTY: SH: dkgy-blk, sme brnblk, vsft-firm, v-fsbvis gr, ply-sbply, rthy lstr, gt tex, sl calc, arg cnt</p>
---	--	--	--









SURVEY
MD 10740'
INC 89.14°
AZI 88.79°
TVD 7365.00'

SURVEY
MD 10829'
INC 88.27°
AZI 88.29°
TVD 7367.00'

SURVEY
MD 10919'
INC 89.38°
AZI 89.90°
TVD 7369.51'

jk gy, sme brnblk-blk, sb blk-y-bkly,
l, gt tex, rthy-svlt lstr, sl calc cnt,
sme wht, sme buff, sft - firm, cpxl,
xy lstr, v calc, r gn flr
blk, sme brnblk, vsft-firm, vf-sbvis
lstr, gt tex, sl calc, arg cnt

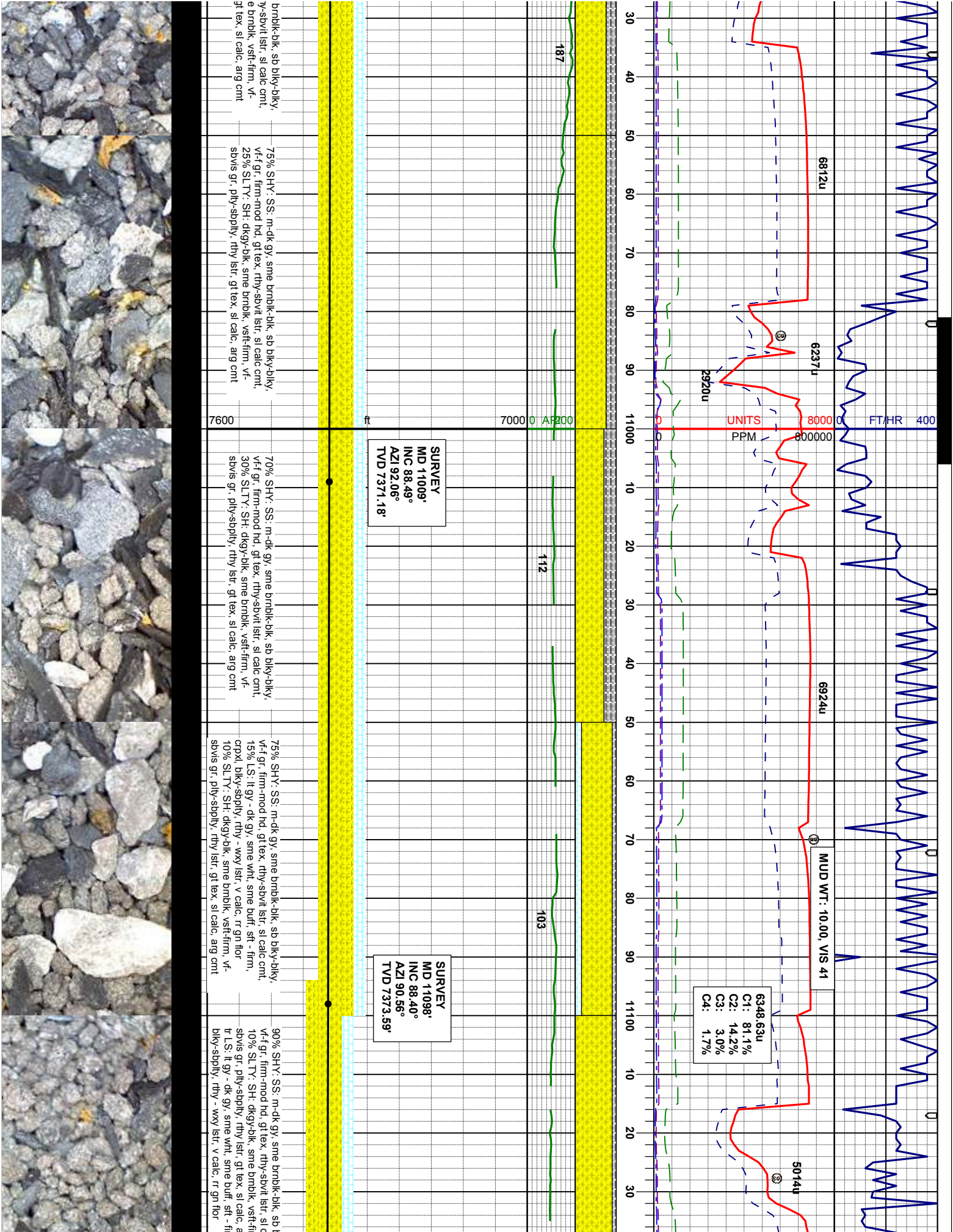
95% SHY: SS: m-dk gy, sme brnblk-blk, sb blk-y-bkly,
vf-f gr, firm-mod hd, gt tex, rthy-svlt lstr, sl calc cnt,
5% SLTY: SH: dkgy-blk, sme brnblk, vsft-firm, vf-sbvis
gr, ply-sbply, rthy lstr, gt tex, sl calc, arg cnt

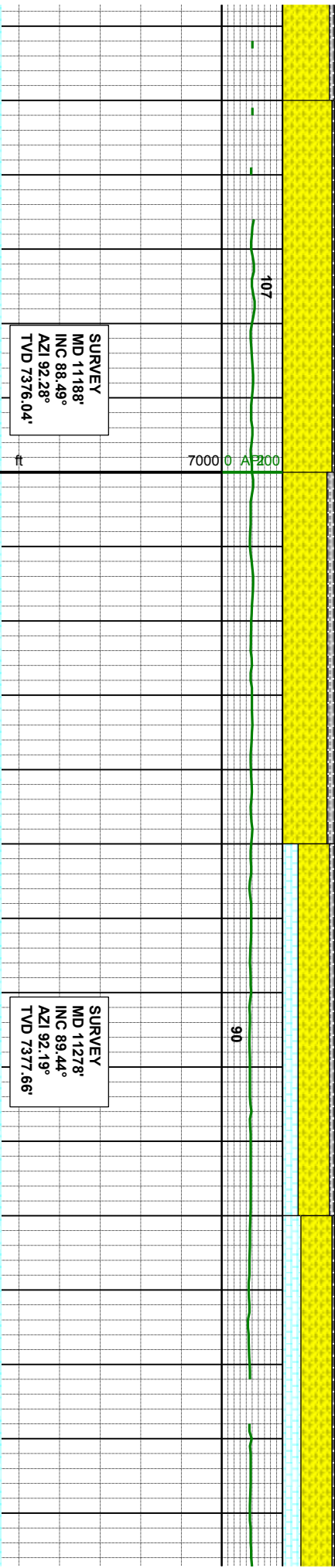
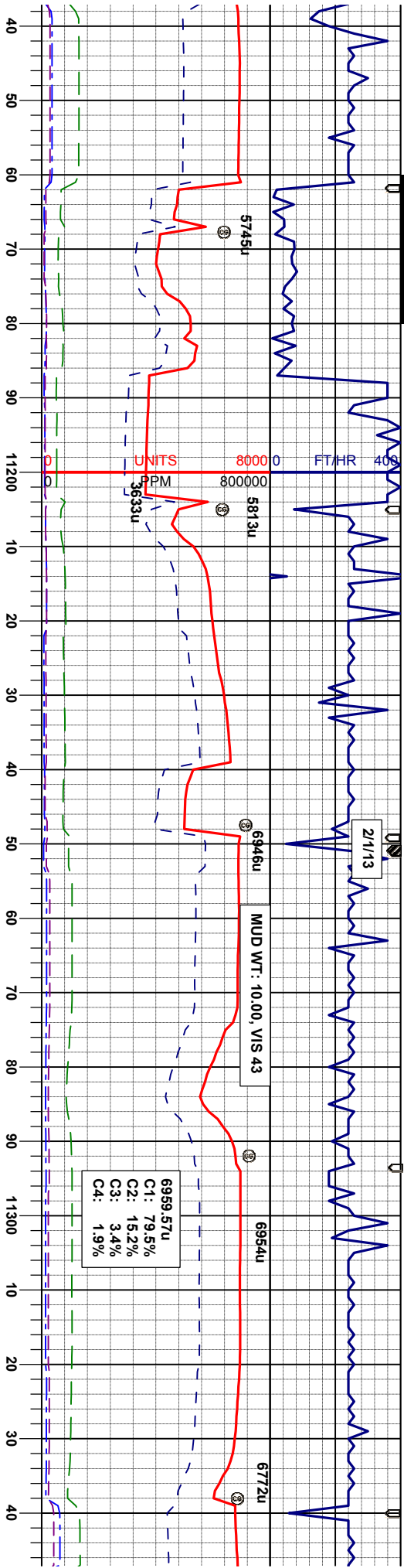
90% SHY: SS: m-dk gy, sme brnblk-blk, sb blk-y-bkly,
vf-f gr, firm-mod hd, gt tex, rthy-svlt lstr, sl calc cnt,
10% SLTY: SH: dkgy-blk, sme brnblk, vsft-firm, vf-
sbvis gr, ply-sbply, rthy lstr, gt tex, sl calc, arg cnt

95% SHY: SS: m-dk gy, sme brnblk-blk, sb blk-y-bkly,
vf-f gr, firm-mod hd, gt tex, rthy-svlt lstr, sl calc cnt,
tr LS: lt gy - dk gy, sme wht, sme buff, sft - firm, cpxl,
blk-y-sbply, rthy - wxy lstr, v calc, r gn flr
tr SLTY: SH: dkgy-blk, sme brnblk, vsft-firm, vf-sbvis
gr, ply-sbply, rthy lstr, gt tex, sl calc, arg cnt

75% SHY: SS: m-dk gy, sme
vf-f gr, firm-mod hd, gt tex, rth
25% SLTY: SH: dkgy-blk, sm
sbvis gr, ply-sbply, rthy lstr, i

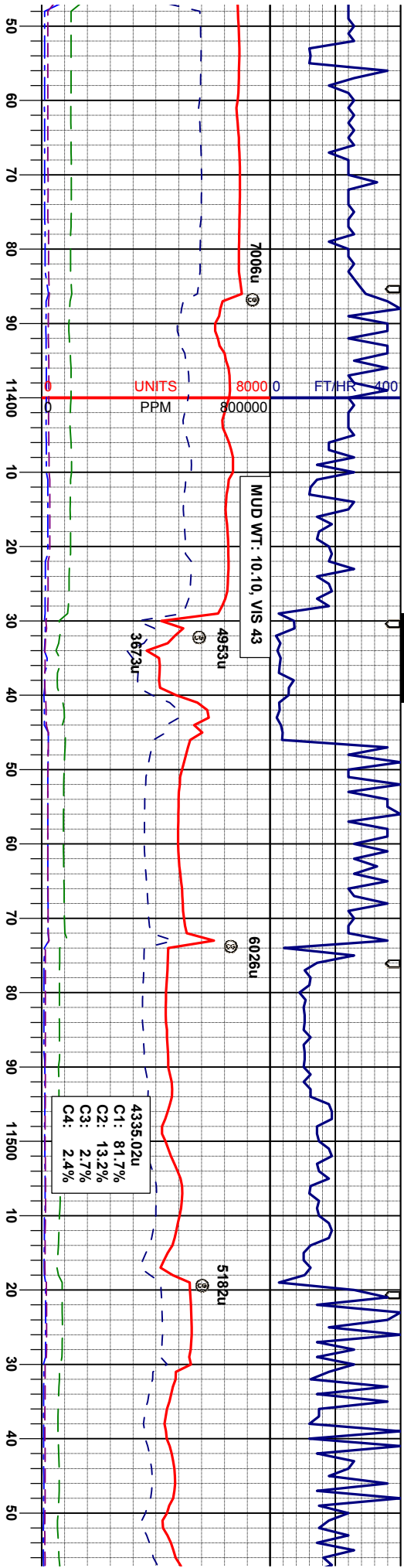






95% SHY: SS: m-dk gy, sme brnblk-blk, sb blk-y-biky, vrf gr, firm-mod nd, gt tex, rthy-svrt lstr, sl calc cnt, 5% SLTY: SH: dkgy-blk, sme brnblk, vsft-firm, vf-svvs gr, ply-sbply, rthy lstr, gt tex, sl calc, arg cnt tr LS: lt gy - dk gy, sme wht, sme buff, sft - firm, cppl, blk-y-sbply, rthy - wxy lstr, v calc, rr gn flr	7600
80% SHY: SS: m-dk gy, sme brnblk-blk, sb blk-y-biky, vrf gr, firm-mod nd, gt tex, rthy-svrt lstr, sl calc cnt, 20% SLTY: SH: dkgy-blk, sme brnblk, vsft-firm, vf-svvs gr, ply-sbply, rthy lstr, gt tex, sl calc, arg cnt tr LS: lt gy - dk gy, sme wht, sme buff, sft - firm, cppl, blk-y-sbply, rthy - wxy lstr, v calc, rr gn flr	7000
60% SHY: SS: m-dk gy, sme brnblk-blk, sb blk-y-biky, vrf gr, firm-mod nd, gt tex, rthy-svrt lstr, sl calc cnt, 30% LS: lt gy - dk gy, sme wht, sme buff, sft - firm, cppl, blk-y-sbply, rthy - wxy lstr, v calc, rr gn flr 10% SLTY: SH: dkgy-blk, sme brnblk, vsft-firm, vf-svvs gr, ply-sbply, rthy lstr, gt tex, sl calc, arg cnt	7000
60% SHY: SS: m-dk gy, sme brnblk-blk, sb blk-y-biky, vrf gr, firm-mod nd, gt tex, rthy-svrt lstr, sl calc cnt, 35% LS: lt gy - dk gy, sme wht, sme buff, sft - firm, cppl, blk-y-sbply, rthy - wxy lstr, v calc, rr gn flr 5% SLTY: SH: dkgy-blk, sme brnblk, vsft-firm, vf-svvs gr, ply-sbply, rthy lstr, gt tex, sl calc, arg cnt	7000





SURVEY
MD 11367
INC 90.43°
AZI 91.76°
TVD 7377.76'

SURVEY
MD 11457
INC 89.44°
AZI 91.34°
TVD 7377.86'

SURVEY
MD 11546
INC 88.95°
AZI 90.00°
TVD 7379.10'

70% SHY: SS: m-dk gy, sme brnblk-blk, sb blk-y-bkly, v-f gr, firm-mod hd, gt tex, rthy-sbvlt lstr, sl calc cnt, 20% LS: lt gy - dk gy, sme wht, sme buff, sft - firm, crpxl, blk-y-sbply, rthy - wxy lstr, v calc, r gr flr sbvs gr, ply-sbply, rthy lstr, gt tex, sl calc, arg cnt 10% SLTY: SH: dkgy-blk, sme brnblk, vsft-firm, v-f sbvs gr, firm-mod hd, gt tex, rthy-sbvlt lstr, sl calc cnt

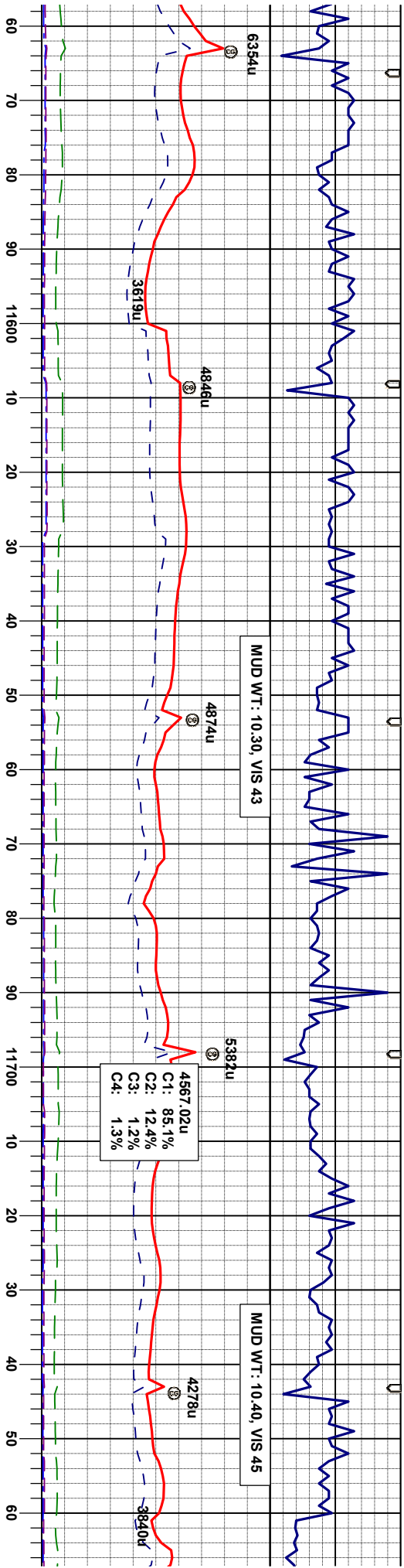
60% LS: lt gy - dk gy, sme wht, sme buff, sft - firm, crpxl, blk-y-sbply, rthy - wxy lstr, v calc, r gr flr 25% SLTY: SH: dkgy-blk, sme brnblk, vsft-firm, v-f sbvs gr, ply-sbply, rthy lstr, gt tex, sl calc, arg cnt 15% SHY: SS: m-dk gy, sme brnblk-blk, sb blk-y-bkly, v-f gr, firm-mod hd, gt tex, rthy-sbvlt lstr, sl calc cnt

75% LS: lt gy - dk gy, sme wht, sme buff, sft - firm, crpxl, blk-y-sbply, rthy - wxy lstr, v calc, r gr flr 20% SLTY: SH: dkgy-blk, sme brnblk, vsft-firm, v-f sbvs gr, ply-sbply, rthy lstr, gt tex, sl calc, arg cnt 5% SHY: SS: m-dk gy, sme brnblk-blk, sb blk-y-bkly, v-f gr, firm-mod hd, gt tex, rthy-sbvlt lstr, sl calc cnt

80% LS: lt gy - dk gy, sme wht, sme buff, sft - firm, crpxl, blk-y-sbply, rthy - wxy lstr, v calc, r gr flr 15% SLTY: SH: dkgy-blk, sme brnblk, vsft-firm, v-f sbvs gr, ply-sbply, rthy lstr, gt tex, sl calc, arg cnt 5% SHY: SS: m-dk gy, sme brnblk-blk, sb blk-y-bkly, v-f gr, firm-mod hd, gt tex, rthy-sbvlt lstr, sl calc cnt

80% crpxl 20% sbvs tr SH gr, fir





SURVEY
MD 11636°
INC 88.86°
AZI 89.67°
TVD 7380.83°

SURVEY
MD 11706°
INC 89.85°
AZI 89.56°
TVD 7381.44°

SEBASTYEN PC023-63HC REACH
TD @ 11,768' MD: 02/01/2013 06:4

THANK YOU FOR CHOOSING
COLUMBINE LOGGING, INC.

SURVEY
MD 11768°
INC 89.85°
AZI 89.56°
TVD 7381

L.S.: lt gy - dk gy, sme wht, sme buff, sft - firm,
. bky-sbply, rthy - wxy istr, v calc, rr gn floor
SL.TY: SH: dkgy-blk, sme brnblk, vsft-firm, vf-
gr, ply-sbply, rthy istr, gt tex, sl calc, arg cnt
IV: SS: m-dk gy, sme brnblk-blk, sb bly-bly, vf-f
m-mod hd, gt tex, rthy-sbvt istr, sl calc cnt.

85% L.S.: lt gy - dk gy, sme wht, sme buff, sft - firm,
crpxl, bky-sbply, rthy - wxy istr, v calc, rr gn floor
15% SL.TY: SH: dkgy-blk, sme brnblk, vsft-firm, vf-
sbvs gr, ply-sbply, rthy istr, gt tex, sl calc, arg cnt
tr SHY: SS: m-dk gy, sme brnblk-blk, sb bly-bly, vf-f
gr, firm-mod hd, gt tex, rthy-sbvt istr, sl calc cnt.

100% L.S.: lt gy - dk gy, sme wht, sme buff, sft - firm,
crpxl, bky-sbply, rthy - wxy istr, v calc, rr gn floor
tr SL.TY: SH: dkgy-blk, sme brnblk, vsft-firm, vf-sbvs
gr, ply-sbply, rthy istr, gt tex, sl calc, arg cnt

100% L.S.: lt gy - dk gy, sme wht, sme buff, sft - firm,
crpxl, bky-sbply, rthy - wxy istr, v calc, rr gn floor
tr SL.TY: SH: dkgy-blk, sme brnblk, vsft-firm, vf-sbvs
gr, ply-sbply, rthy istr, gt tex, sl calc, arg cnt



